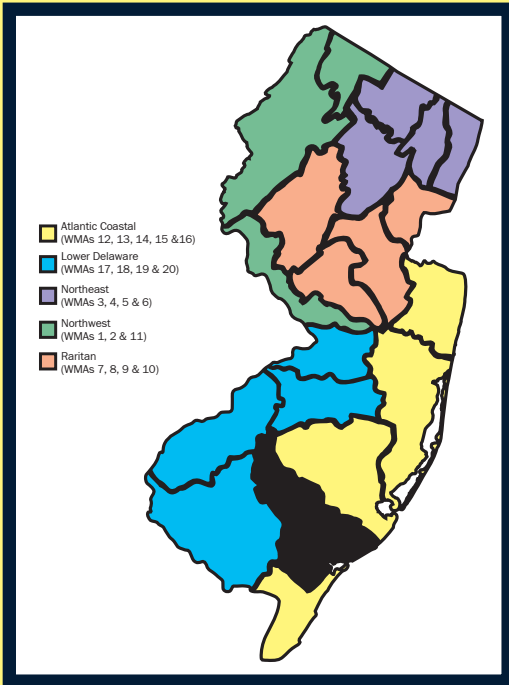


Watershed Management Area 15

Great Egg Harbor



Watershed Management Area 15 (WMA15) includes watersheds draining to Great Egg Harbor in Atlantic County. The management area encompasses waters draining eastern Gloucester and Camden Counties. The area includes the following watersheds: Great Egg Harbor River, Tuckahoe River, Absecon Creek and Patcong Creek.

The Great Egg Harbor River is 49 miles long and drains an area of 304 square miles. It originates in eastern Gloucester and Camden Counties, an agricultural and suburban area, before flowing through the Pinelands region. The river drains into Great Egg Harbor Bay before emptying into the Atlantic Ocean. The river is tidal downstream of the dam at Mays Landing.

The watershed's dominant land use is forests, with the remainder agricultural and developed. Population centers include Berlin, Winslow, Monroe, Mays Landing and Egg Harbor City. The major tributaries are Hospitality Branch, Watering Race, Babcock Creek, Deep Run, South River and Stephens Creek.

There are many lakes and ponds in this area, but the largest is Lake Lenape, near Mays Landing. Of the approximately 12 NJPDES permitted discharges here, about half are municipal and half are industrial/commercial.

Nonpoint source pollution issues related to cropland agriculture dominate the upper reaches of the watershed. In the lower more developed section of the watershed, suburban/urban runoff are the primary contributors.

WMA 15 Partnerships:

- ▶ Atlantic County Planning Department
- ▶ Atlantic County Utilities Authority
- ▶ Great Egg Harbor Watershed Association
- ▶ New Jersey Clean Vessel Act Program
- ▶ Pinelands Commission
- ▶ Richard Stockton State College



New Jersey Department of Environmental Protection
Division of Watershed Management
Bureau of Watershed Planning

Watershed Management Area 15

Great Egg Harbor

This factsheet is a snapshot of the workplan for Watershed Management Area 15.

Watershed Plans are regional/areawide in scope (i.e. not a study of one location); detail specific projects or management measures to be implemented to achieve the goals of the plan; and set forth a prioritization of the projects or measures identified in the plan. The Department has identified a **Priority Segment for Restoration** in each watershed management area. Funding was provided to conduct a basic characterization and assessment of the segment and to identify restoration projects to address a specific parameter of concern (i.e. fecal coliform). Since 2003, the Department has prepared and adopted hundreds of Total Maximum Daily Load (TMDL) documents to address the impaired waters of the state. **TMDL Implementation Priorities** represent the Bureau of Watershed Planning's focus for implementing the adopted TMDLs. **Active Grant Projects** represent current projects with which the Bureau of Watershed Planning is actively involved. Many of these projects are funded through the Federal 319(h) Nonpoint Source Program.

Watershed Plans:

- ▶ Adams Branch Stormwater Remediation Plan Phase I - Characterization and Assessment Completed (final plan under development)

Priority Segment for Restoration

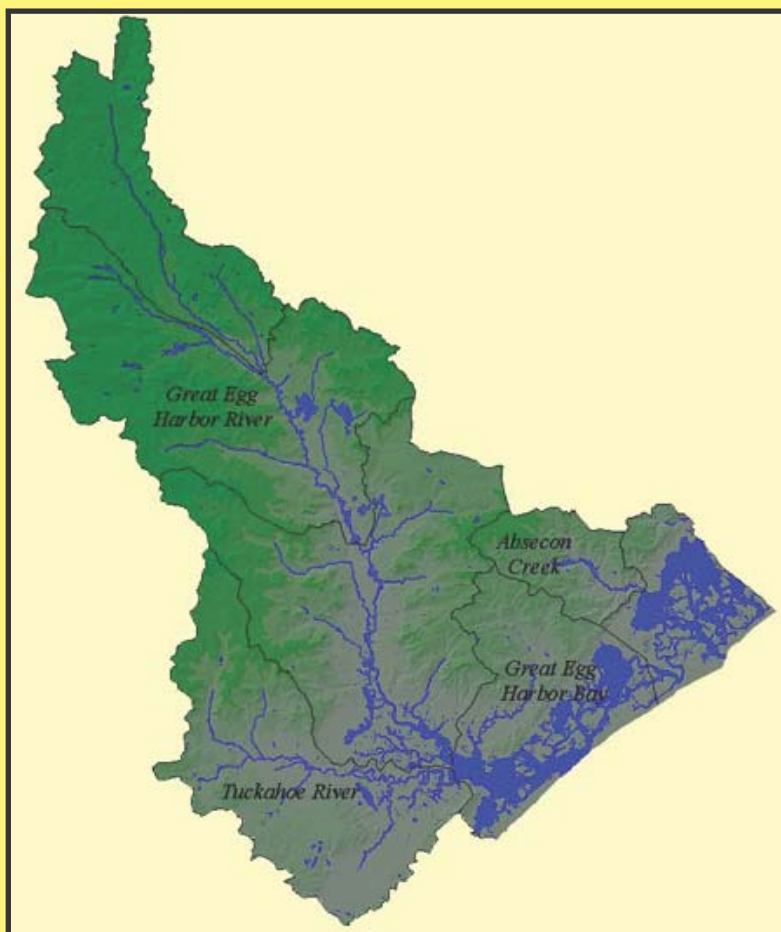
- ▶ Adams Branch

TMDL Implementation Priorities:

- ▶ New Brooklyn Lake Eutrophication

Active Grant Projects:

- ▶ Mary Jane Pond Stormwater Retrofits, Dredging and Stream Bank Stabilization Restoration Project
 - Linwood City
- ▶ Adams Branch Stormwater Remediation Plan
 - Great Egg Harbor Watershed Association and Stockton State College



For more information on Watershed Management Area 15, contact Harold Nebling, WMA 15 Area Manager at (609) 633-1989 or email Harold.Nebling@dep.state.nj.us.

For more information on New Jersey's 20 Watershed Management Areas visit www.nj.gov/dep/watershedmgt