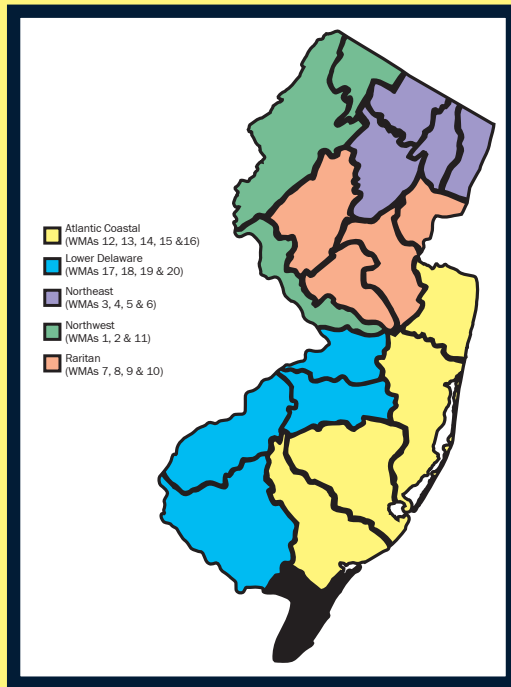




Watershed Management Area 16

Cape May



Watershed Management Area 16 (WMA 16) includes watersheds draining the Cape May portion of New Jersey. The region includes Cape May County south and east of the Tuckahoe River watershed. The region contains minimal surface water flow. Ground water and shellfish harvesting water quality are the principal water issues. No fixed physical/chemical fresh (surface) water monitoring locations are currently located within this management area. The area includes the following watersheds: Dennis Creek, Delaware Bay Coastal Drainage, Cape May Atlantic Coastal Drainage.

Cape May County is located at the southern-most portion of New Jersey and represents a continuation of the Atlantic Coastal Plain. The county is 267 square miles in area and is bounded on the north by Atlantic and Cumberland Counties, on the east by the Atlantic Ocean and on the west and south by the Delaware Bay. The region represents a low lying, gently rolling plain whose highest point is 54 feet above sea level and whose surface is largely covered by wet soils and wetlands. Large swamps (Great Cedar, Timber and Beaver Swamps) occupy the north-central part of the county. Most, if not all, streams are tidal in their lower reaches and terminate by flowing into fresh water swamps that, in turn, discharge into saltwater marshes near the shore.

The county's permanent year-round population is about 77,000 with approximately 42 percent of the population residing on the barrier islands that comprise the eastern perimeter of the peninsula. The summertime population rises to 564,000 with 69 percent residing on the barrier islands.

As stated previously, one of the principal water resource issues within this management area is drinking water supply. The resource is largely dependent upon ground water that is in turn highly vulnerable to saltwater intrusion from the west, south and east, especially in the southern portion of the peninsula. The expected increase in population (an expected 68 percent increase by 2040) is predicted to put further stress on the already overextended water supply.

WMA 16 Partnerships:

- ▶ Association of New Jersey Environmental Commissions
- ▶ Cape May County Planning Department
- ▶ Cape May County Municipal Utilities Authority
- ▶ United States Geological Survey



New Jersey Department of Environmental Protection
 Division of Watershed Management
 Bureau of Watershed Planning

Watershed Management Area 16

Cape May

This factsheet is a snapshot of the workplan for Watershed Management Area 16.

Watershed Plans are regional/areawide in scope (i.e. not a study of one location); detail specific projects or management measures to be implemented to achieve the goals of the plan; and set forth a prioritization of the projects or measures identified in the plan. The Department has identified a **Priority Segment for Restoration** in each watershed management area. Funding was provided to conduct a basic characterization and assessment of the segment and to identify restoration projects to address a specific parameter of concern (i.e. fecal coliform). Since 2003, the Department has prepared and adopted hundreds of Total Maximum Daily Load (TMDL) documents to address the impaired waters of the state. **TMDL Implementation Priorities** represent the Bureau of Watershed Planning's focus for implementing the adopted TMDLs. **Active Grant Projects** represent current projects with which the Bureau of Watershed Planning is actively involved. Many of these projects are funded through the Federal 319(h) Nonpoint Source Program.

Watershed Plans:

- ▶ None at the present time

Priority Segment for Restoration

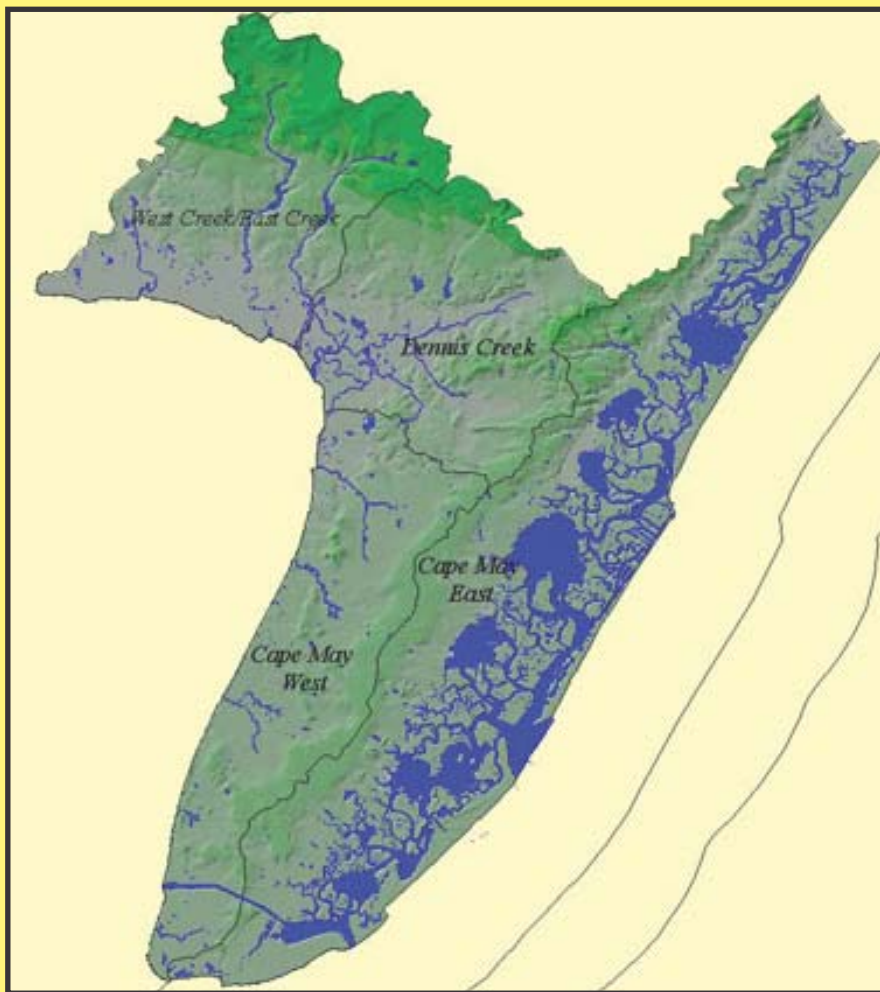
- ▶ Cape May County Park Lake and Holmes Creek
- ▶ Cox Hall Creek
- ▶ Grassy Sound

TMDL Implementation Priorities:

- ▶ Lily Lake Eutrophication
- ▶ Dennisville Lake Eutrophication

Active Grant Projects:

- ▶ Stormwater Action Now Mapping and Source Trackdown Projects
 - Cape May County



For more information on Watershed Management Area 16, contact Harold Nebling, WMA 16 Area Manager at (609) 633-1989 or email Harold.Nebling@dep.state.nj.us

For more information on New Jersey's 20 Watershed Management Areas visit www.nj.gov/dep/watershedmgt