

State of New Jersey

Department of Environmental Protection

NEW JERSEY WATER SUPPLY PLAN 2017–2022

APPENDIX D

**ASSESSING FUTURE POPULATION GROWTH DEMAND
SERVICE AREA ANALYSIS UTILIZING METROPOLITAN PLANNING
ORGANIZATION PROJECTIONS**

INTRODUCTION

The goal of the analysis was to model the availability of drinking water supplies water availability for public community water systems in the State of New Jersey through 2040. Results of the analysis show areas of the State with surplus or deficit supplies in relation to currently approved supply, not natural resource capacity. This assessment, when combined with the natural resource limitations discussed in Chapter 3, provides a planning overview for determining areas of surplus and deficit in relation to approved supplies.

There are multiple data sources used to develop the analysis discussed here. Changes to any one of those datasets will change the results shown here. This analysis is presented here to show a snapshot in time of where water availability concerns may exist.

PROCESS

For each projection period, this analysis subtracts the future water demand based on estimated municipal population growth projections from a public water system's remaining available water as determined through the Bureau of Water System Engineering's Deficit/Surplus analysis.. The remaining amount indicates whether a particular water system will have a surplus (remaining available approved supply) or deficit (shortage of approved supply) for their identified water service area. The analysis assumes that all the projected growth for the municipality will be served by community systems, not individual wells. The geospatial extent of the municipal boundaries and the water purveyors that serve them are used to map the results of the analysis. Table D.1 shows the list of data used in this analysis.

Table 1 Data-sets used in the analysis.

Data Title	Provider	Description	Data Location
NJEMS Population Served Data	DEP/Bureau of Safe Drinking Water	Current population served by purveyor in each municipality (12/2017)	https://www13.state.nj.us/DataMiner
Public Water System Deficit/Surplus	DEP/Bureau of Water System Engineering	Current water allocation deficit/surplus data for each water purveyor	http://www.state.nj.us/dep/watersupply/pws.html
MPO projected populations	Metropolitan Planning Organization (MPO)	Projected water demand based upon population projections for each municipality for the 2020, 2025, 2030, 2035 and 2040 periods. Assumes 125 gpcd.	https://www.planning.dot.gov/mpo.asp
New Jersey Municipal Boundaries	DEP/GIS	2009 New Jersey Municipal Boundaries	http://www.nj.gov/dep/gis/listall.html
PWS Service Area Boundaries	DEP/GIS	1998 mapping available, internal deliberative revised dataset used in this analysis	http://www.nj.gov/dep/gis/listall.html

ASSUMPTIONS

1. The analysis assumes no changes to water supply infrastructure or additional permitted allocations (new or expanded sources of supply) in order to estimate the most conservative scenario for public water systems.
2. All projected population growth is assumed to be served by a public water system. The use of private supplies of potable water was not considered for future growth.
3. Many small water systems do not have a deficit/surplus calculated for them and others do not have a mapped service area available. For those systems, a current surplus of zero was assumed.
4. Each person is assumed to use 125 gallons of water per day.
5. Municipalities without a purveyor population served were assumed to not have a water system now or in the future.
6. The Metropolitan Planning Organizations (MPO) data was provided in 5-year intervals beginning in 2015 and ending 2040. As a result, the 2020 projection is the net increase in population from 2015 to 2020 and the 2025 projection was the net increase from 2015 to 2025, etc.

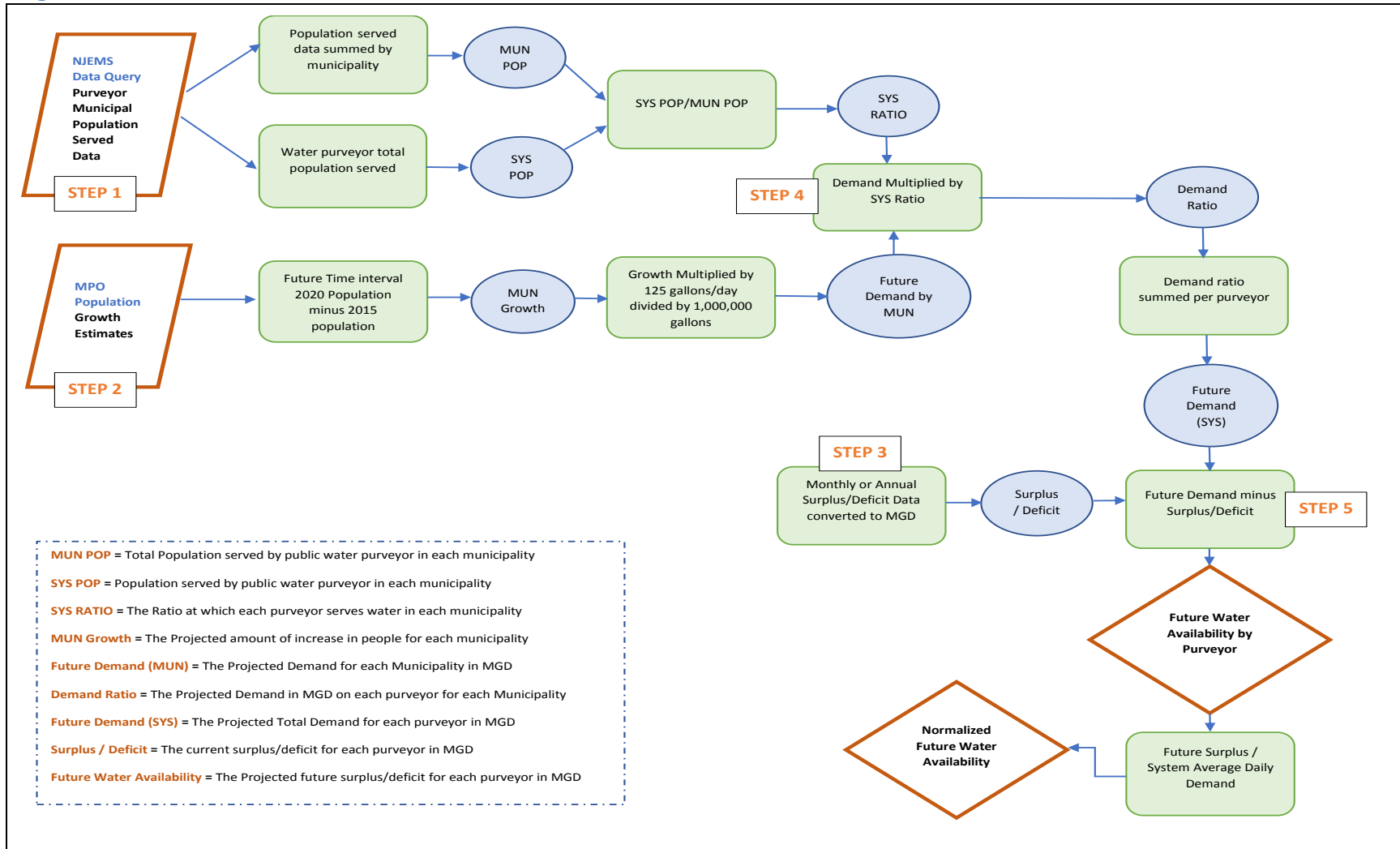
METHODOLOGY

The analysis required multiple steps, described below. Some datasets required manipulation so that they could be used in this analysis. The required inputs were: population growth for each municipality, the ratio each public water system serves in each municipality, total population served by public water purveyors in each municipality, and current surplus/deficit for each water purveyor. Figure D.6 is a schematic of the analysis process.

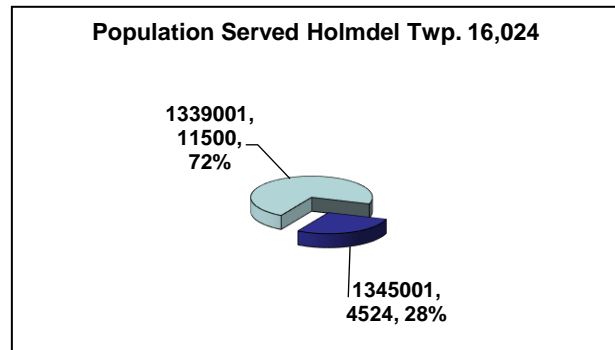
STEP 1

The first step in this analysis was to determine the total population served by public water systems in each municipality. The Department's centralized database (NJEMS) contains data on the population served by each purveyor in each municipality it provides water to. This database was used to calculate the total population in each municipality served by a purveyor, which is defined as *mun pop*. (This number will be less than the total municipal population for those municipalities which have areas served by domestic wells.) This database also allowed for a calculation of the total population served by each purveyor, which is defined as *sys pop*. Municipalities not identified in the database with a population served were considered to not have a water system present for the entire analysis. Any future growth demands in these municipalities would not be attributed to a public water system and accordingly not mapped as part of the result.

Figure D.6 Projected Water Supply Water Availability Analysis Flowchart



The *sys pop* divided by *mun pop* for each purveyor in each municipality generates the ratio at which a purveyor delivers water to a particular municipality (*sys ratio*). If a municipality was served by one system, then 100% (*sys ratio* = 1) of future growth would be attributed to that system. An example of how *sys ratio* is determined for multiple systems is as follows: Holmdel Twp. is served by two purveyors; Shorelands Water Company (PWSID #1339001) serves 11,500 people and NJ American WC (PWSID #1345001) serves 4,524 for a total *mun pop* of 16,024. In this case the *sys ratio* for PWSID # 1339001 = 0.72 (72%) and PWSID # 1345001 = 0.28 (28%).



STEP 2

The projected population growth data from the Metropolitan Planning Organizations (MPO) for each municipality input was determined next. The MPO data provided a future expected population growth for each municipality in the State. This data was provided in 5-year intervals beginning in 2015 and ending in 2040. The population growth values for 2020, 2025, 2030, 2035 and 2040 were determined by subtracting from the population value for the year 2015. This established the expected growth in people (*projected growth*) for the 5-year intervals from 2015 to 2040. This value was then converted into million gallons per day (MGD) as shown below. For the purposes of this analysis, *demand* equals the demand in MGD for each municipality in each 5-year interval.

$$demand = \frac{(projected\ growth) * (125\ gallons/day)}{1,000,000\ gallons}$$

STEP 3

The final input established for this analysis was current surplus for each water purveyor. Public water system deficit/surplus results are determined from an analysis done by the Division of Water Supply and Geoscience's Bureau of Water System Engineering. All public community water systems in New Jersey are included in the database. Based upon these data, 591 community water systems were included in the analysis, out of which 115 water system do not have any deficit/surplus information available because of their small size and falling under reporting limits.

The deficit/surplus analysis creates three values, Water Allocation Monthly Average Daily Demand (MADD), Water Allocation Annual Average Daily Demand (AADD), and Firm Capacity (FC). The two water supply values are based on existing water allocation permit limits and bulk purchase contracts. The FC value is based on current infrastructure (e.g. distribution systems, pumps and treatment system) capacities. More information of this process can be found in the following document http://www.nj.gov/dep/watersupply/pdf/pws_analysisdoc.pdf.

Table 2. Unit Conversions.

Deficit/Surplus Type	Original Units	Conversion
MADD	MGM	divide by 31
AADD	MGY	divide by 365

The current surplus/deficit for each water purveyor was determined by finding the most limiting value from the MADD or AADD which was converted to MGD. The conversion process is shown in the table above. All remaining systems without a deficit/surplus determination were assumed to have a *surplus* of 0 MGD in the model. After this process was completed every system had a “*surplus/deficit*” value in MGD.

STEP 4

The next phase of the analysis determined the projected demand on each system. This was accomplished by multiplying the *future demand by municipality* by the corresponding *sys ratio* for each water purveyor. These values (*demand ratio*) were then summed by purveyor producing a total demand on the purveyor (*future demand for a system*). A *future demand* value was generated for each time interval.

The following two tables show an example of steps 1 through 4 for Holmdel Township, Monmouth County. Two purveyors deliver water to Holmdel, PWSID 1339001 and PWSID 1345001. These two purveyors also deliver water to other municipalities in addition to Holmdel, therefore to determine the future demand on each supplying purveyor, the *demand* for each municipality was distributed to each purveyor and then summed by purveyor. As such, the *future demand* in 2020 for Shorelands Water Company (PWSID 1339001) is calculated to be 0.06823 MGD and 1.32 MGD for NJ American Water (PWSID 1345001).

Table 3 Example of future demand calculation

Shorelands Water Company, PWID 1339001				
Municipality Served	mun pop	sys pop	sys ratio	2020 MGD Projected Demand
Aberdeen Twp	17,373	1	0.0001	0.00000223
Hazlet Twp	24,661	24,661	1.000	0.0168
Holmdel Twp	16,024	11,500	0.718	0.051433
Keyport Boro	7501	1	0.0001	0.000000611
Union Beach Boro	6002	1	0.0002	0.0000005207

Future Demand of System: 0.06823

NJ American WC - Monmouth Division, PWID 1345001

Municipality Served	mun pop	sys pop	sys ratio	2020 MGD Projected Demand
Aberdeen Twp	17,373	8,114	0.467	0.01809
Allenhurst Borough	1,507	1,507	1.000	0
Asbury Park City	6,923	6,923	1.000	0.1481
Bay Head Borough	4,835	4,835	1.000	0.00625
Bradley Beach Borough	4,293	4,293	1.000	0.01
O.Colts Neck Twp	4,362	6	0.0014	0.00005101
Deal Borough	2,848	2,848	1.000	0.0002083
Eatontown Borough	7696	7,696	1.00	0.05583
Fair Haven Borough	6,077	5,507	.9062	0.002832
Highlands Borough	3,523	3,523	1.000	0.0020833
Holmdel Twp	16,024	4,524	0.282	0.02023
Interlaken Borough	1,370	1,370	1.000	0.0002083
Lakewood Twp	82,925	61,925	0.7468	0.6361
Lavallettee Boro	3,417	917	0.2684	0.0006709
Little Silver Borough	6,748	6,617	0.9806	0.0059244
Loch Arbour Village	384	384	1.000	0.0004166
Long Branch City	18,917	18,917	1.000	0.02292
Middletown Twp	54,945	54,445	0.991	0.0875
Monmouth Beach Borough	2,307	2,307	1.000	0.000625
Neptune Twp	25,461	25,461	1.000	0.06062
Neptune City Borough	3,648	3,648	1.000	0.00375
Ocean Twp	33,632	21,049	0.6259	0.01747
Oceanport Borough	5,314	5,314	1.000	0.04354
Red Bank Borough	15,309	3,359	0.2194	0.00548
Rumson Borough	7,207	7,207	1.000	0.01083
Sea Bright Borough	1,384	1,384	1.000	0.001875
Shrewsbury Borough	4,493	4,493	1.000	0.00979
Shrewsbury Twp	279	279	1.000	0.00104
Tinton Falls Borough	15,059	15,059	1.000	0.12979
Toms River Twp	1,02,319	1100	0.0108	0.00586
Union Beach Boro	6002	1	0.0002	0.003124
West Long Branch Borough	6,557	6,557	1.000	0.011042

Future Demand of System: 1.32

STEP 5

The last part of the analysis determined the net total surplus for each purveyor for the projected time period. The projected demand was summed by each purveyor (Future Demand) for each time interval and then the current surplus/deficit for each purveyor was subtracted. This produces a value representing the predicted amount of surplus/deficit per system (Final Surplus/Deficit) at each time interval. The Final Surplus/Deficit for each system was then mapped by linking the data to the drinking water service area boundaries using the Public Water System Identification Database (PWSID).

The future water availability by water purveyor is an important piece of information for any one purveyor. However, the relative water availability between different purveyors can be misleading. For example, a water system with a large population served and surplus of only 1 mgd needs to be considered differently than a very small system with the same 1 mgd of availability. In other words, 1 mgd for a small system may be more than adequate to meet any future growth, but for a large system it would not be adequate. To address this shortcoming, the future water availability for a system was divided by its current average daily demand. This resulted in a normalized future water availability that is a better metric for comparing one system to another.

FINDINGS AND SUMMARY

Figures D.1, D.2, D.3, D.4 and D.5 show water purveyors with their corresponding deficit/surplus (left side) and the normalized future water availability (right side) for the 2020, 2025, 2030, 2035 and 2040 projection periods. Table 1 shows water purveyors with their corresponding deficit/surplus and the normalized future water availability for the 2020,2025,2030,2035 and 2040 projection periods. Table 2 shows the water purveyors and the corresponding county and municipality which they provide water to.

This analysis identifies water purveyors future water availability based upon projected population growth. It identified both systems with and without adequate approved supply to satisfy projected population growth. While the uses of such an assessment need to be evaluated with the understanding that permit modifications or demand changes can alter the results, it is a useful statewide analysis to aid in identifying areas where there is currently available approved supply and those areas that are currently, or are projected to require additional sources of supply. However, as indicated at the beginning of this appendix, it is important to consider the natural capacities of those areas, since areas with excess supply, may have limited sustainable supplies.

Figure D.1a (left) shows the projected 2020 water availability by public water system.

Figure D.1b (right) shows the projected 2020 water availability normalized by 2015 average daily demand.

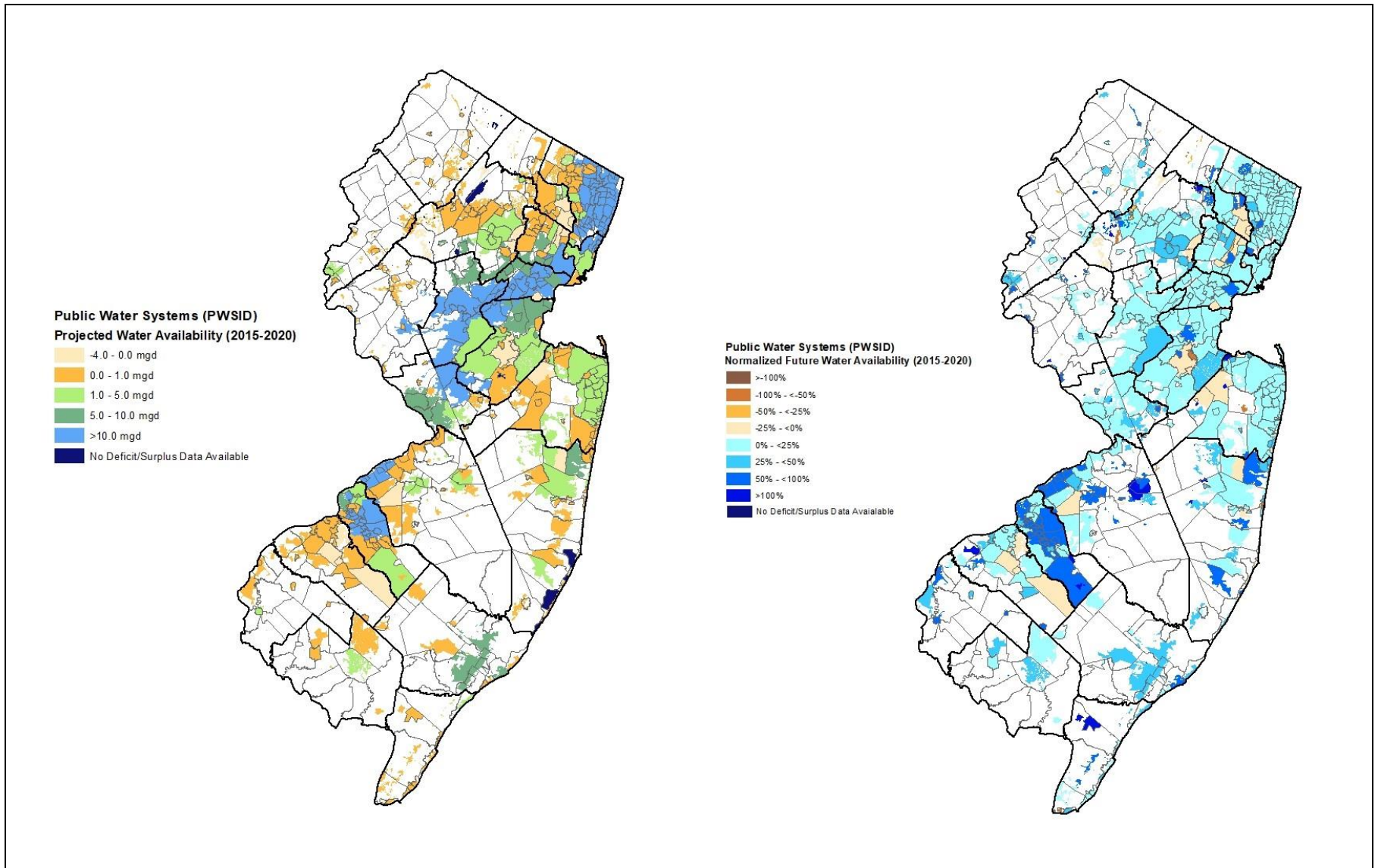


Figure D.2a (left) shows the projected 2025 water availability by public water system.

Figure D.2b (right) shows the projected 2025 water availability normalized by 2015 average daily demand.

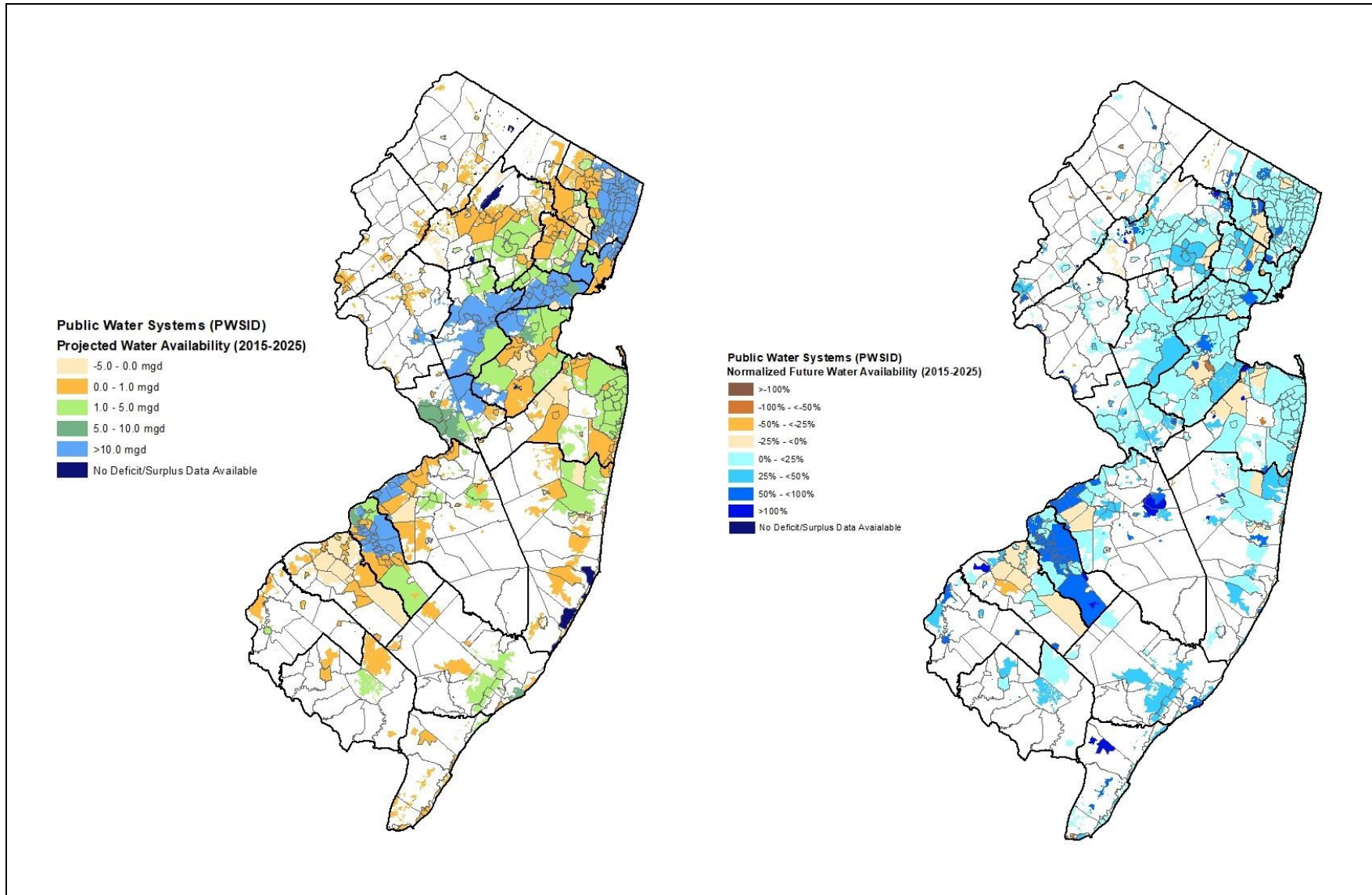


Figure D.3a (left) shows the projected 2030 water availability by public water system.

Figure D.3b (right) shows the projected 2030 water availability normalized by 2015 average daily demand.

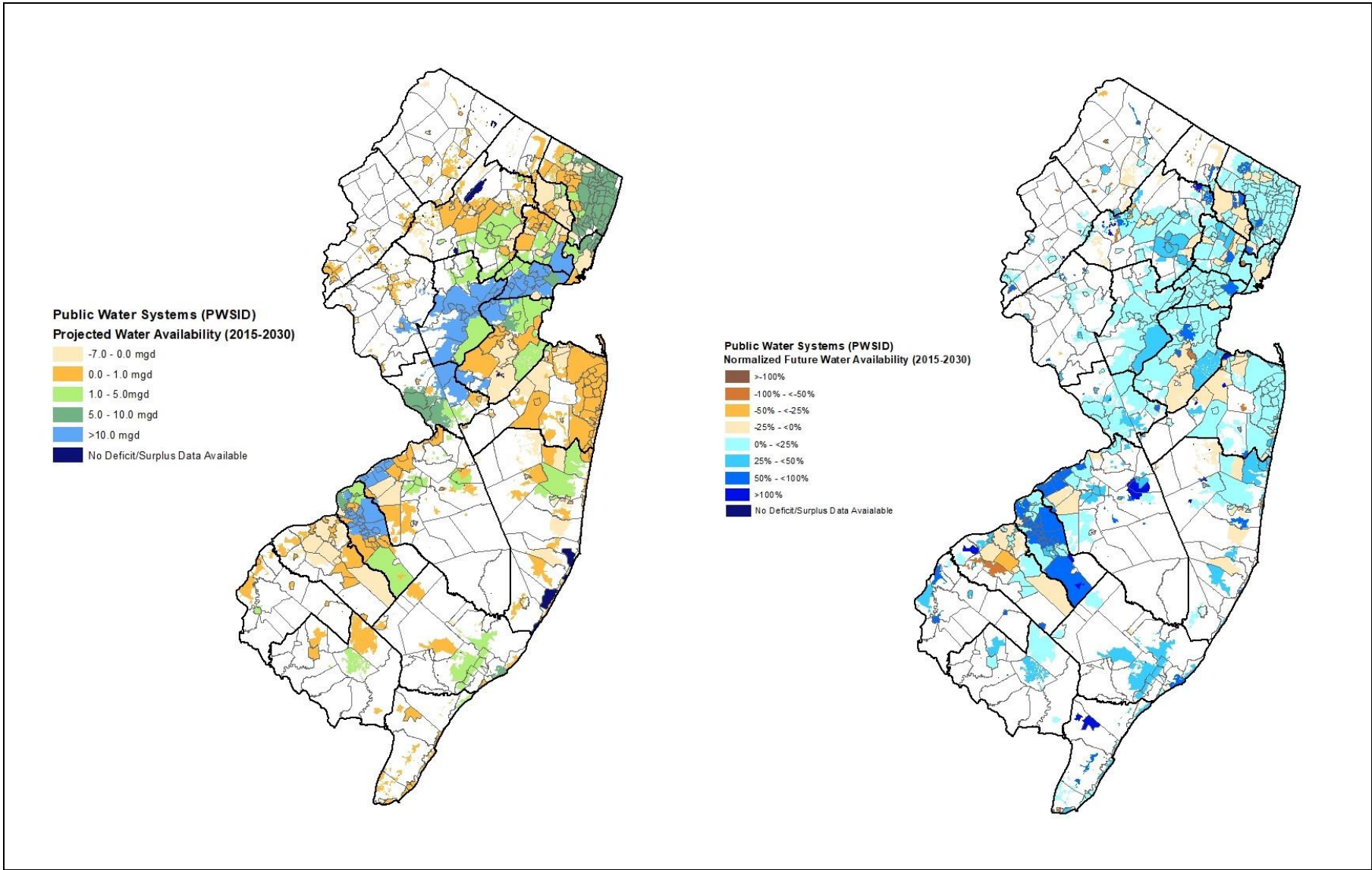


Figure D.4a (left) shows the projected 2035 water availability by public water system.

Figure D.4b (right) shows the projected 2035 water availability normalized by 2015 average daily demand.

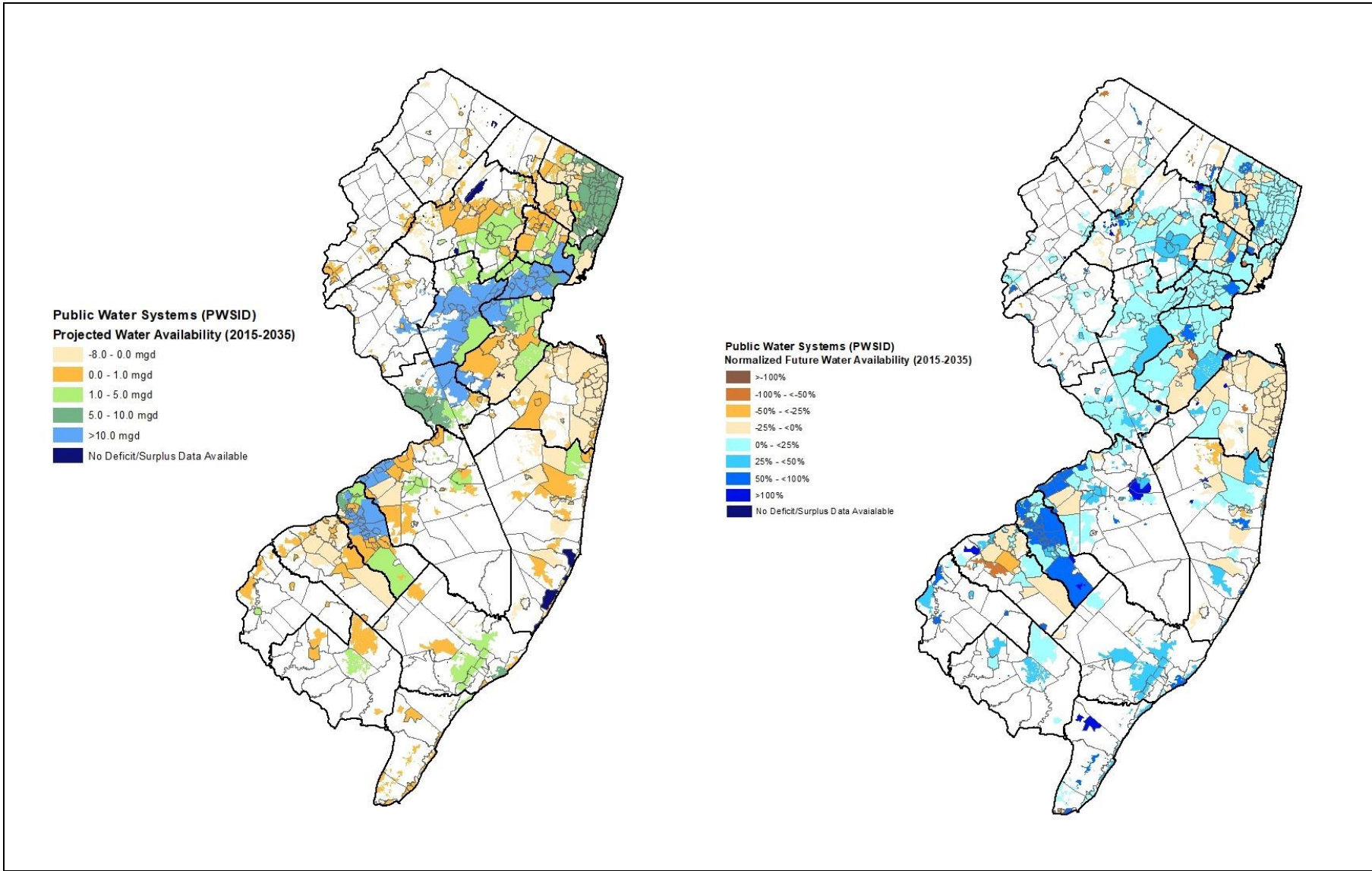
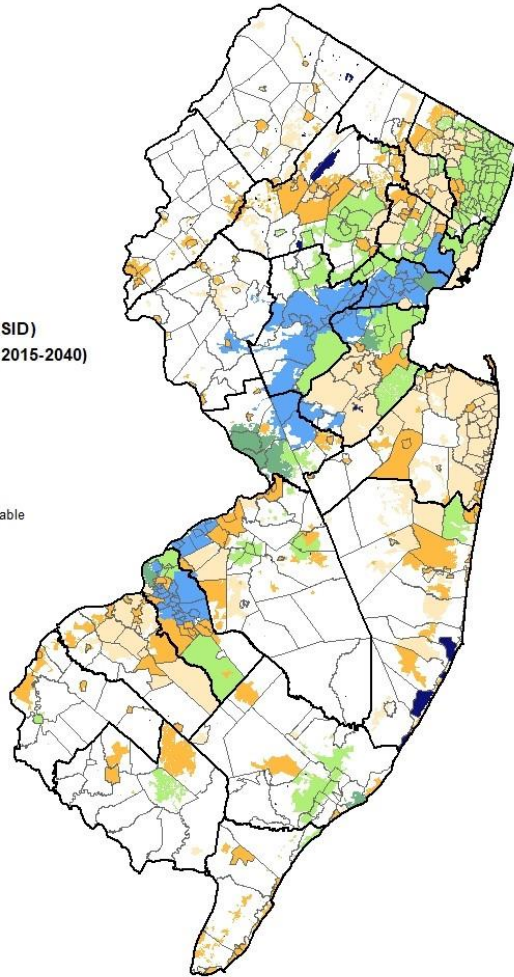


Figure D.5a (left) shows the projected 2040 water availability by public water system.

Figure D.5b (right) shows the projected 2040 water availability normalized by 2015 average daily demand.

Public Water Systems (PWSID)
Projected Water Availability (2015-2040)

- 9.0 - 0.0 mgd
- 0.0 - 1.0 mgd
- 1.0 - 5.0 mgd
- 5.0 - 10.0 mgd
- >10.0 mgd
- No Deficit/Surplus Data Available



Public Water Systems (PWSID)
Normalized Future Water Availability (2015-2040)

- >-100%
- 100% - <-50%
- 50% - <-25%
- 25% - <0%
- 0% - <25%
- 25% - <50%
- 50% - <100%
- >100%
- No Deficit/Surplus Data Available

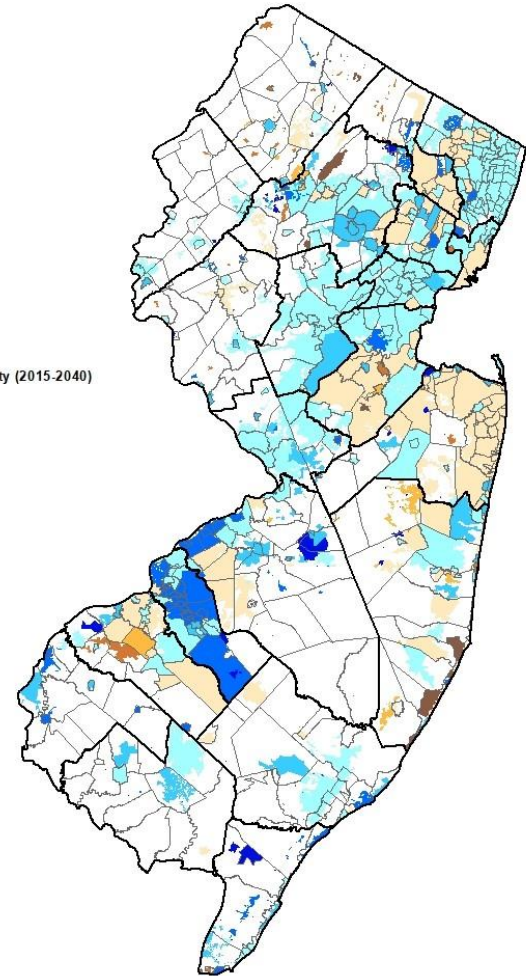


Table D4. Deficit/surplus and the normalized future water availability for each water purveyor

PWSID	PWSID NAME	2015 Deficit/ Surplus	Future Water Availability (mgd)					Normalized Water Availability (-)				
			2015-2020	2015-2025	2015-2030	2015-2035	2015-2040	2015-2020	2015-2025	2015-2030	2015-2035	2015-2040
NJ0102001	ATLANTIC CITY MUA	7.69	7.59	7.51	7.46	7.44	7.45	0.66	0.65	0.64	0.64	0.64
NJ0103001	BRIGANTINE WATER DEPARTMENT	0.55	0.54	0.53	0.53	0.53	0.54	0.30	0.30	0.30	0.30	0.30
NJ0104003	BUENA BOROUGH MUA	0.12	0.08	0.05	0.02	-0.01	-0.02	0.16	0.09	0.03	-0.01	-0.04
NJ0105001	BUENA FAMILY MANOR MOBILE H P	0.10	0.09	0.08	0.07	0.06	0.06	38.89	35.53	32.17	28.81	27.13
NJ0105002	GARDEN HOMES MANAGEMENT CORPORATION	0.09	0.08	0.07	0.06	0.05	0.05	6.93	6.19	5.45	4.71	4.34
NJ0107001	EGG HARBOR CITY WATER DEPT	0.05	0.04	0.01	0.00	-0.02	-0.03	0.11	0.03	-0.01	-0.05	-0.08
NJ0108002	ENGLISH CREEK MANOR M H PARK	0.06	0.06	0.06	0.05	0.05	0.05	1.37	1.34	1.31	1.28	1.26
NJ0108003	TILTON TERRACE MH	0.05	0.04	0.04	0.04	0.04	0.04	0.80	0.76	0.72	0.68	0.66
NJ0108004	NORMS DALE MOBILE HOME PARK	0.05	0.05	0.04	0.04	0.04	0.04	0.88	0.85	0.83	0.81	0.79
NJ0108005	AQUA NJ - SEAVIEW HARBOR	0.06	0.05	0.05	0.05	0.05	0.05	1.25	1.21	1.18	1.15	1.13
NJ0108006	TOWER MOBILE HOMES	N/A	N/A	N/A	N/A	N/A	N/A	N/A	N/A	N/A	N/A	N/A
NJ0108009	STONEFIELD MOBILE HOME PARK	N/A	N/A	N/A	N/A	N/A	N/A	N/A	N/A	N/A	N/A	N/A
NJ0108013	TOWER 1999 MOBILE HOME PARK	N/A	N/A	N/A	N/A	N/A	N/A	N/A	N/A	N/A	N/A	N/A
NJ0108014	TOWER EAST MOBILE HOME PARK	0.09	0.09	0.09	0.09	0.09	0.09	11.13	11.06	10.99	10.94	10.89
NJ0108019	OAK FOREST MOBILE HOME PARK	0.02	0.02	0.02	0.02	0.02	0.02	0.31	0.29	0.27	0.25	0.24
NJ0108023	EGG HARBOR RIVER RESORT	N/A	N/A	N/A	N/A	N/A	N/A	N/A	N/A	N/A	N/A	N/A

Table D4. Deficit/surplus and the normalized future water availability for each water purveyor

PWSID	PWSID NAME	2015 Deficit/ Surplus	Future Water Availability (mgd)					Normalized Water Availability (-)				
			2015-2020	2015-2025	2015-2030	2015-2035	2015-2040	2015-2020	2015-2025	2015-2030	2015-2035	2015-2040
NJ0108303	BAY BREEZE VILLAGE	0.09	0.09	0.09	0.09	0.09	0.09	8.56	8.50	8.44	8.39	8.35
NJ0111004	POMONA MOBILE HOME PARK	N/A	N/A	N/A	N/A	N/A	N/A	N/A	N/A	N/A	N/A	N/A
NJ0111006	SHADY PINES CAMPING RESORT	N/A	N/A	N/A	N/A	N/A	N/A	N/A	N/A	N/A	N/A	N/A
NJ0111007	SWAN LAKE RESORT	N/A	N/A	N/A	N/A	N/A	N/A	N/A	N/A	N/A	N/A	N/A
NJ0112001	HAMILTON TOWNSHIP MUA	0.93	0.89	0.85	0.81	0.78	0.75	0.43	0.41	0.39	0.38	0.36
NJ0112002	BLACK HORSE MANOR	N/A	N/A	N/A	N/A	N/A	N/A	N/A	N/A	N/A	N/A	N/A
NJ0113001	HAMMONTON WATER DEPT	0.29	0.22	0.16	0.09	0.04	0.01	0.15	0.11	0.06	0.03	0.00
NJ0115001	LONGPORT WATER DEPARTMENT	0.09	0.09	0.09	0.09	0.08	0.08	0.29	0.29	0.29	0.25	0.25
NJ0116001	MARGATE CITY WATER DEPARTMENT	0.37	0.35	0.33	0.32	0.30	0.29	0.12	0.12	0.11	0.11	0.10
NJ0117001	MULLICA WOODS MOBILE HOME PARK	0.08	0.06	0.03	0.01	-0.01	-0.02	2.76	1.50	0.25	-0.37	-1.00
NJ0119001	DELILAH TERRACE MHP	0.07	0.07	0.07	0.07	0.07	0.07	2.54	2.49	2.46	2.43	2.40
NJ0119002	NJ AMERICAN WATER - ATLANTIC COUNTY	6.02	5.32	4.59	3.98	3.43	2.99	0.42	0.36	0.31	0.27	0.24
NJ0122001	VENTNOR CITY WATER & SEWER UTILITY	0.08	0.03	-0.02	-0.06	-0.09	-0.11	0.01	-0.01	-0.02	-0.03	-0.04
NJ0123001	WEYMOUTH TWSP MUA	N/A	N/A	N/A	N/A	N/A	N/A	N/A	N/A	N/A	N/A	N/A

Table D4. Deficit/surplus and the normalized future water availability for each water purveyor

PWSID	PWSID NAME	2015 Deficit/ Surplus	Future Water Availability (mgd)					Normalized Water Availability (-)				
			2015-2020	2015-2025	2015-2030	2015-2035	2015-2040	2015-2020	2015-2025	2015-2030	2015-2035	2015-2040
NJ0123002	THE OAKS OF WEYMOUTH WATER CO.	0.01	0.00	0.00	-0.01	-0.01	-0.01	0.01	-0.02	-0.05	-0.08	-0.08
NJ0201001	ALLENDALE WATER DEPT	0.07	0.04	0.02	0.00	-0.03	-0.05	0.04	0.02	0.00	-0.02	-0.04
NJ0211001	ELMWOOD PARK WATER DEPT	0.64	0.59	0.53	0.48	0.42	0.37	0.23	0.21	0.19	0.17	0.15
NJ0217001	FAIR LAWN WATER DEPT	1.53	1.44	1.35	1.26	1.17	1.08	0.26	0.24	0.22	0.21	0.19
NJ0220001	SUEZ WATER NEW JERSEY FRANKLIN LAKES	0.29	0.25	0.20	0.16	0.12	0.07	0.06	0.05	0.04	0.03	0.02
NJ0221001	GARFIELD WATER DEPARTMENT	1.32	1.25	1.18	1.11	1.04	0.97	0.30	0.29	0.27	0.25	0.24
NJ0228001	HO HO KUS WATER DEPT	0.18	0.17	0.16	0.14	0.13	0.12	0.18	0.17	0.15	0.14	0.13
NJ0231001	PASSAIC VALLEY WC LODI WD	2.70	2.63	2.57	2.50	2.44	2.37	0.88	0.85	0.83	0.81	0.79
NJ0232001	LYNDHURST WATER DEPARTMENT	0.15	0.09	0.04	-0.02	-0.08	-0.13	0.03	0.01	-0.01	-0.02	-0.04
NJ0233001	MAHWAH WATER DEPARTMENT	0.68	0.61	0.54	0.47	0.39	0.32	0.12	0.11	0.09	0.08	0.06
NJ0233005	BOGERTS RANCH ESTATES IN	0.00	0.00	0.00	0.00	0.00	0.00	0.05	0.02	-0.01	-0.04	-0.07
NJ0236001	SUEZ WATER NEW JERSEY MONTVALE PD95	2.76	2.76	2.75	2.75	2.75	2.75	11.43	11.42	11.41	11.40	11.39
NJ0238001	SUEZ WATER NEW JERSEY HACKENSACK	15.39	13.20	11.01	8.83	6.64	4.45	0.11	0.09	0.08	0.06	0.04
NJ0239001	PVWC-NORTH ARLINGTON	2.92	2.88	2.84	2.81	2.77	2.73	0.94	0.93	0.91	0.90	0.89

Table D4. Deficit/surplus and the normalized future water availability for each water purveyor

PWSID	PWSID NAME	2015 Deficit/ Surplus	Future Water Availability (mgd)					Normalized Water Availability (-)				
			2015-2020	2015-2025	2015-2030	2015-2035	2015-2040	2015-2020	2015-2025	2015-2030	2015-2035	2015-2040
NJ0242001	OAKLAND WATER DEPT	0.41	0.37	0.32	0.28	0.23	0.19	0.22	0.19	0.17	0.14	0.11
NJ0247001	PARK RIDGE WATER DEPT	0.05	0.01	-0.03	-0.06	-0.10	-0.13	0.01	-0.01	-0.03	-0.04	-0.06
NJ0248001	RAMSEY WATER DEPT	1.43	1.38	1.33	1.28	1.24	1.19	0.73	0.70	0.68	0.65	0.63
NJ0251001	RIDGEWOOD WATER	0.82	0.61	0.40	0.18	-0.03	-0.24	0.05	0.03	0.01	0.00	-0.02
NJ0257001	SADDLE BROOK WATER DEPT	0.21	0.17	0.13	0.09	0.04	0.00	0.11	0.09	0.06	0.03	0.00
NJ0258001	SADDLE RIVER WATER UTILITY	0.06	0.04	0.02	0.00	-0.03	-0.05	0.13	0.06	-0.01	-0.08	-0.15
NJ0264001	WALDWICK WATER DEPT	0.14	0.10	0.07	0.03	0.00	-0.04	0.10	0.07	0.03	0.00	-0.03
NJ0265001	WALLINGTON WATER DEPT	0.55	0.53	0.51	0.49	0.46	0.44	0.39	0.38	0.36	0.34	0.33
NJ0301001	BUTTONWOOD MOBILE HOME PARK	N/A	N/A	N/A	N/A	N/A	N/A	N/A	N/A	N/A	N/A	N/A
NJ0303001	BORDENTOWN WATER DEPARTM	0.60	0.58	0.55	0.51	0.49	0.49	0.24	0.23	0.21	0.21	0.20
NJ0305001	BURLINGTON CITY WATER DEPT	0.86	0.85	0.84	0.83	0.82	0.82	0.73	0.72	0.71	0.71	0.71
NJ0306001	BURLINGTON TWP W DEPT	0.61	0.59	0.54	0.49	0.47	0.46	0.18	0.16	0.15	0.14	0.14
NJ0307002	ALBERT C WAGNER YOUTH CORRECTIONAL FACILITY	0.29	0.28	0.26	0.24	0.24	0.23	0.33	0.31	0.29	0.28	0.28
NJ0311001	FENIMORE TRAILER PARK	N/A	N/A	N/A	N/A	N/A	N/A	N/A	N/A	N/A	N/A	N/A
NJ0311002	FENIMORE WOODS MHP	N/A	N/A	N/A	N/A	N/A	N/A	N/A	N/A	N/A	N/A	N/A

Table D4. Deficit/surplus and the normalized future water availability for each water purveyor

PWSID	PWSID NAME	2015 Deficit/ Surplus	Future Water Availability (mgd)					Normalized Water Availability (-)				
			2015-2020	2015-2025	2015-2030	2015-2035	2015-2040	2015-2020	2015-2025	2015-2030	2015-2035	2015-2040
NJ0313001	EVESHAM MUA	0.27	0.23	0.15	0.06	0.02	0.01	0.06	0.04	0.01	0.01	0.00
NJ0314001	FIELDSBORO WATER DEPARTMENT	0.03	0.03	0.03	0.03	0.03	0.03	0.59	0.57	0.56	0.55	0.55
NJ0315001	FLORENCE TWP W DEPT	0.24	0.19	0.07	-0.05	-0.10	-0.12	0.12	0.04	-0.03	-0.06	-0.07
NJ0318002	NJ AMERICAN WATER - HOMESTEAD	0.05	0.04	0.01	-0.02	-0.04	-0.04	0.23	0.04	-0.16	-0.24	-0.27
NJ0319001	MAPLE SHADE WATER DEPARTMENT	0.27	0.26	0.24	0.22	0.21	0.21	0.15	0.14	0.13	0.13	0.13
NJ0320001	MEDFORD TWP DEPT OF MUNI	0.45	0.38	0.23	0.09	0.02	0.00	0.25	0.16	0.06	0.01	0.00
NJ0320002	ESTAUGH CORP T/A MEDFORD LEAS	0.02	0.02	0.02	0.01	0.01	0.01	0.41	0.32	0.24	0.21	0.20
NJ0322001	MOORESTOWN WATER DEPT	0.14	0.10	0.02	-0.07	-0.11	-0.12	0.02	0.00	-0.01	-0.02	-0.02
NJ0323001	NJ AMERICAN WATER - MOUNT HOLLY	2.47	2.30	1.89	1.48	1.31	1.25	0.56	0.46	0.36	0.32	0.31
NJ0324001	MT LAUREL TWP MUA	0.02	-0.05	-0.21	-0.38	-0.45	-0.47	-0.01	-0.05	-0.08	-0.10	-0.10
NJ0325001	JBMDL-DIX MAIN SYSTEM	2.97	2.86	2.70	2.53	2.43	2.36	1.41	1.32	1.24	1.19	1.16
NJ0326001	AQUA NJ - CALIFORNIA VILLAGE	0.07	0.07	0.07	0.07	0.06	0.06	0.00	0.00	0.00	0.00	0.00
NJ0326003	HANOVER EAST APARTMENTS	N/A	N/A	N/A	N/A	N/A	N/A	N/A	N/A	N/A	N/A	N/A
NJ0326004	AQUA NJ - HANOVER MOBILE VILLAGE	0.09	0.09	0.09	0.08	0.08	0.08	7.27	7.12	6.97	6.90	6.88

Table D4. Deficit/surplus and the normalized future water availability for each water purveyor

PWSID	PWSID NAME	2015 Deficit/ Surplus	Future Water Availability (mgd)					Normalized Water Availability (-)				
			2015-2020	2015-2025	2015-2030	2015-2035	2015-2040	2015-2020	2015-2025	2015-2030	2015-2035	2015-2040
NJ0326005	CEDAR GROVE APARTMENTS	N/A	N/A	N/A	N/A	N/A	N/A	N/A	N/A	N/A	N/A	N/A
NJ0326006	JOINT BASE MDL MCGUIRE AREA	0.55	0.52	0.44	0.37	0.33	0.32	0.72	0.61	0.50	0.46	0.44
NJ0326007	SOUTHS MOBILE HOME PARK	N/A	N/A	N/A	N/A	N/A	N/A	N/A	N/A	N/A	N/A	N/A
NJ0326008	AQUA NJ INC - SPARTAN VILLAGE	0.05	0.05	0.04	0.04	0.04	0.04	0.92	0.84	0.77	0.74	0.73
NJ0326009	WAGON WHEEL ESTATES	N/A	N/A	N/A	N/A	N/A	N/A	N/A	N/A	N/A	N/A	N/A
NJ0326012	MILLSTREAM APTS	0.08	0.08	0.08	0.08	0.08	0.08	3.73	3.71	3.69	3.69	3.68
NJ0326013	MILLSTREAM APTS	0.08	0.08	0.08	0.08	0.08	0.08	3.72	3.69	3.65	3.63	3.62
NJ0326014	FAMILY PARK	N/A	N/A	N/A	N/A	N/A	N/A	N/A	N/A	N/A	N/A	N/A
NJ0327001	NJ AMERICAN WATER - WESTERN DIVISION	25.89	25.77	25.50	25.22	25.10	25.06	0.88	0.87	0.86	0.85	0.85
NJ0328001	PEMBERTON BOROUGH WATER	0.08	0.08	0.07	0.07	0.07	0.07	0.53	0.50	0.48	0.47	0.47
NJ0329001	BURLINGTON COUNTY INSTIT	0.05	0.05	0.04	0.04	0.04	0.04	0.61	0.56	0.52	0.50	0.50
NJ0329002	HILLTOP MOBILE VILLAGE	N/A	N/A	N/A	N/A	N/A	N/A	N/A	N/A	N/A	N/A	N/A
NJ0329003	PEMBERTON TOWNSHIP WATER - LAKE VALLEY	-0.02	-0.03	-0.05	-0.07	-0.08	-0.09	-0.08	-0.14	-0.20	-0.23	-0.24
NJ0329004	PEMBERTON TWP DEPT MAIN	0.47	0.44	0.36	0.28	0.24	0.23	0.39	0.32	0.25	0.22	0.20
NJ0329005	PINEVIEW TERRACE INCORPORATED	0.02	0.02	0.02	0.02	0.02	0.02	0.79	0.73	0.66	0.63	0.62
NJ0329006	NJ AMERICAN WATER - SUNBURY	0.04	0.04	0.03	0.03	0.03	0.03	0.53	0.45	0.38	0.34	0.33

Table D4. Deficit/surplus and the normalized future water availability for each water purveyor

PWSID	PWSID NAME	2015 Deficit/ Surplus	Future Water Availability (mgd)					Normalized Water Availability (-)				
			2015-2020	2015-2025	2015-2030	2015-2035	2015-2040	2015-2020	2015-2025	2015-2030	2015-2035	2015-2040
NJ0329008	PINEFIELD APARTMENTS	0.09	0.09	0.09	0.09	0.09	0.09	9.06	8.99	8.91	8.88	8.86
NJ0329009	PEMBERTON TWP WATER DEPT - PEMBERTON HEIGHTS	-0.06	-0.06	-0.06	-0.07	-0.07	-0.07	-1.03	-1.10	-1.18	-1.21	-1.22
NJ0332001	FAWN LAKE VILLAGE	0.04	0.04	0.04	0.04	0.04	0.04	0.80	0.78	0.75	0.74	0.74
NJ0332002	OAKVIEW LEISURE VILLAGE	0.08	0.08	0.08	0.08	0.08	0.08	5.31	5.24	5.16	5.13	5.12
NJ0333001	PINELANDS WATER CO	0.24	0.24	0.24	0.23	0.23	0.23	0.54	0.53	0.52	0.52	0.52
NJ0333002	MOBILE ESTATES OF SOUTH A	0.02	0.02	0.02	0.02	0.02	0.02	0.30	0.30	0.29	0.29	0.29
NJ0333003	RICHARDS MOBILE HOME COURT	N/A	N/A	N/A	N/A	N/A	N/A	N/A	N/A	N/A	N/A	N/A
NJ0333004	NJ AMERICAN WATER - VINCENTOWN	0.04	0.04	0.04	0.04	0.04	0.04	0.69	0.69	0.68	0.68	0.68
NJ0335001	ALLENWOOD MOBILE ESTATES	0.09	0.09	0.08	0.08	0.08	0.08	6.20	6.00	5.80	5.72	5.69
NJ0338001	WILLINGBORO MUA	0.80	0.73	0.57	0.40	0.34	0.31	0.27	0.21	0.15	0.13	0.12
NJ0339001	NEW LISBON DEVELOPMENT CTR	0.10	0.10	0.10	0.10	0.10	0.10	0.63	0.63	0.63	0.62	0.62
NJ0340001	WRIGHTSTOWN MUA	0.05	0.05	0.04	0.04	0.03	0.03	0.47	0.42	0.37	0.35	0.34
NJ0340002	MAPLEWOOD APARTMENTS	0.08	0.08	0.08	0.08	0.08	0.08	3.73	3.72	3.70	3.69	3.69
NJ0404001	BELLMAWR WATER DEPT	0.16	0.16	0.16	0.16	0.16	0.15	0.20	0.20	0.19	0.19	0.19
NJ0405001	BERLIN WATER DEPARTMENT	0.35	0.34	0.33	0.32	0.31	0.31	0.24	0.23	0.23	0.22	0.22

Table D4. Deficit/surplus and the normalized future water availability for each water purveyor

PWSID	PWSID NAME	2015 Deficit/ Surplus	Future Water Availability (mgd)					Normalized Water Availability (-)				
			2015-2020	2015-2025	2015-2030	2015-2035	2015-2040	2015-2020	2015-2025	2015-2030	2015-2035	2015-2040
NJ0407001	BROOKLAWN WATER DEPARTMENT	0.06	0.06	0.06	0.06	0.06	0.06	0.31	0.31	0.31	0.31	0.31
NJ0408001	CITY OF CAMDEN	7.88	7.87	7.85	7.83	7.82	7.81	0.72	0.71	0.71	0.71	0.71
NJ0410001	TOWN & COUNTRY MHP	0.08	0.08	0.08	0.08	0.08	0.08	3.33	3.37	3.42	3.44	3.45
NJ0410002	BNAI BRITH CHESILHURST HOUSE	0.08	0.08	0.08	0.08	0.08	0.08	3.84	3.85	3.87	3.87	3.87
NJ0411001	CLEMENTON WATER DEPARTMENT	0.26	0.26	0.26	0.26	0.26	0.26	0.39	0.39	0.39	0.39	0.39
NJ0412001	COLLINGSWOOD WATER DEPAR	0.32	0.33	0.34	0.36	0.37	0.37	0.18	0.19	0.20	0.21	0.21
NJ0414001	GLOUCESTER CITY WATER DEPARTMENT	0.43	0.35	0.15	-0.04	-0.12	-0.15	0.39	0.17	-0.05	-0.14	-0.17
NJ0415002	AQUA NJ - BLACKWOOD	0.72	0.66	0.52	0.37	0.31	0.28	0.10	0.08	0.06	0.05	0.04
NJ0416001	HADDON TWP WATER DEPARTM	0.18	0.18	0.17	0.16	0.16	0.16	0.17	0.17	0.16	0.16	0.15
NJ0424001	MERCHANTVILLE PENNSAUKEN	1.46	1.45	1.44	1.42	1.42	1.41	0.16	0.16	0.15	0.15	0.15
NJ0428002	PINE HILL BOROUGH MUA	0.48	0.47	0.43	0.40	0.38	0.38	0.56	0.51	0.47	0.45	0.45
NJ0429001	PINE VALLEY GOLF CLUB	0.01	0.01	0.01	0.01	0.01	0.01	0.25	0.25	0.25	0.25	0.25
NJ0435003	WATERFORD TOWNSHIP WATER DEPT.	0.42	0.41	0.38	0.36	0.35	0.34	1.89	1.78	1.67	1.62	1.60
NJ0435324	PARKWOODS CARE	N/A	N/A	N/A	N/A	N/A	N/A	N/A	N/A	N/A	N/A	N/A
NJ0436001	ANCORA PSYCHIATRIC HOSPI	0.51	0.50	0.49	0.48	0.47	0.47	1.41	1.38	1.34	1.33	1.33

Table D4. Deficit/surplus and the normalized future water availability for each water purveyor

PWSID	PWSID NAME	2015 Deficit/ Surplus	Future Water Availability (mgd)					Normalized Water Availability (-)				
			2015-2020	2015-2025	2015-2030	2015-2035	2015-2040	2015-2020	2015-2025	2015-2030	2015-2035	2015-2040
NJ0436002	ELMTOWNE VILLAGE ASSOC SYS 1	0.08	0.08	0.08	0.08	0.08	0.08	3.36	3.34	3.32	3.31	3.31
NJ0436007	WINSLOW TWP DMU	2.08	2.00	1.82	1.64	1.56	1.53	0.86	0.78	0.70	0.67	0.65
NJ0436008	WINSLOW TWP DMU	0.05	0.05	0.05	0.05	0.05	0.05	1.24	1.20	1.16	1.15	1.14
NJ0436009	ELMTOWNE VILLAGE ASSOC. SYS 2	0.08	0.08	0.08	0.08	0.08	0.08	3.36	3.34	3.32	3.31	3.31
NJ0436010	WINSLOW COURT HOMES INC	N/A	N/A	N/A	N/A	N/A	N/A	N/A	N/A	N/A	N/A	N/A
NJ0501001	AVALON WATER AND SEWERAGE UTILITIES	0.25	0.27	0.28	0.29	0.30	0.32	0.24	0.25	0.27	0.28	0.29
NJ0502001	CAPE MAY WATER & SEWER UTILITY	0.72	0.74	0.76	0.78	0.80	0.82	0.47	0.49	0.49	0.51	0.52
NJ0503001	CAPE MAY POINT BORO WATER DEPARTMENT	-0.22	-0.22	-0.22	-0.22	-0.21	-0.21	-1.00	-1.00	-1.00	-0.95	-0.95
NJ0504306	OCEAN VIEW ASSO OPERATION LLC DBA AUTUMN LAKE	0.06	0.09	0.11	0.14	0.16	0.19	2.30	2.96	3.62	4.28	4.94
NJ0505002	LOWER TWP MUA	0.04	0.10	0.17	0.23	0.32	0.41	0.06	0.11	0.15	0.21	0.26
NJ0505003	CAPE MAY MOBILE ESTATES	0.09	0.10	0.10	0.10	0.10	0.10	15.58	15.91	16.23	16.66	17.09
NJ0506001	DELSEA WOODS COMMUNITY LLC	0.07	0.07	0.07	0.07	0.07	0.07	2.36	2.38	2.41	2.44	2.47
NJ0506004	EDGEWOOD VILLAGE M H PARK	N/A	N/A	N/A	N/A	N/A	N/A	N/A	N/A	N/A	N/A	N/A
NJ0506007	GRANDE WOODS SOUTH MOBILE H P	0.04	0.05	0.05	0.05	0.06	0.07	0.77	0.84	0.92	1.02	1.13
NJ0506008	MIDDLE TWP WATER DISTRICT 1	0.04	0.04	0.04	0.04	0.04	0.04	0.61	0.61	0.62	0.63	0.64
NJ0506009	MIDDLE TWP WATER DISTRICT #2	0.01	0.01	0.02	0.02	0.02	0.03	0.29	0.34	0.42	0.50	0.60

Table D4. Deficit/surplus and the normalized future water availability for each water purveyor

PWSID	PWSID NAME	2015 Deficit/ Surplus	Future Water Availability (mgd)					Normalized Water Availability (-)				
			2015-2020	2015-2025	2015-2030	2015-2035	2015-2040	2015-2020	2015-2025	2015-2030	2015-2035	2015-2040
NJ0506010	NJ AMERICAN WATER - CAPE MAY COURT HOUSE	0.45	0.49	0.52	0.57	0.62	0.68	0.59	0.63	0.68	0.74	0.81
NJ0506012	PRESIDENTIAL COURTS MOBILE H P	N/A	N/A	N/A	N/A	N/A	N/A	N/A	N/A	N/A	N/A	N/A
NJ0506013	A AND J MOBILE HOME PARK	N/A	N/A	N/A	N/A	N/A	N/A	N/A	N/A	N/A	N/A	N/A
NJ0506015	GRANDE WOODS NORTH MHP	0.07	0.07	0.07	0.07	0.07	0.08	2.25	2.29	2.34	2.40	2.47
NJ0506321	CEDAR SPRINGS MHP WELL #	N/A	N/A	N/A	N/A	N/A	N/A	N/A	N/A	N/A	N/A	N/A
NJ0508001	NJ AMERICAN WATER - OCEAN CITY	1.20	1.24	1.29	1.34	1.39	1.45	0.45	0.46	0.48	0.50	0.52
NJ0509001	SEA ISLE CITY WATER DEPARTMENT	0.29	0.30	0.31	0.31	0.33	0.34	0.14	0.14	0.14	0.15	0.15
NJ0510001	STONE HARBOR WATER DEPT	0.20	0.20	0.20	0.20	0.21	0.21	0.38	0.38	0.38	0.40	0.40
NJ0511001	NJ AMERICAN WATER - STRATHMERE	0.03	0.04	0.05	0.06	0.08	0.09	0.65	0.84	1.09	1.35	1.67
NJ0511003	SHORE ACRES MOBILE HOME	0.07	0.09	0.12	0.16	0.19	0.24	2.73	3.52	4.57	5.62	6.93
NJ0512001	WEST CAPE MAY WATER DEPT	-0.25	-0.25	-0.25	-0.24	-0.24	-0.23	-1.00	-1.00	-0.95	-0.95	-0.91
NJ0514001	WILDWOOD CITY WATER DEPARTMENT	0.63	0.69	0.75	0.81	0.88	0.94	0.16	0.17	0.19	0.20	0.22
NJ0516001	WOODBINE MUA	0.39	0.39	0.40	0.41	0.42	0.42	1.31	1.35	1.38	1.42	1.42
NJ0516003	CAROL LYNN RESORTS, INC.	0.08	0.08	0.08	0.09	0.09	0.09	4.78	4.89	5.00	5.11	5.11

Table D4. Deficit/surplus and the normalized future water availability for each water purveyor

PWSID	PWSID NAME	2015 Deficit/ Surplus	Future Water Availability (mgd)					Normalized Water Availability (-)				
			2015-2020	2015-2025	2015-2030	2015-2035	2015-2040	2015-2020	2015-2025	2015-2030	2015-2035	2015-2040
NJ0601001	BRIDGETON CITY WATER DEPT	0.79	0.70	0.63	0.55	0.49	0.43	0.21	0.19	0.17	0.15	0.13
NJ0604001	BAYVIEW WATER SYSTEM	0.03	0.03	0.03	0.02	0.02	0.02	0.41	0.41	0.23	0.23	0.23
NJ0605001	FAIRTON OAKS M H COMMUNITY	0.07	0.07	0.07	0.07	0.07	0.07	2.68	2.66	2.66	2.65	2.63
NJ0605002	TIPS TRAILER PARK & SALE	0.05	0.05	0.05	0.05	0.05	0.04	0.92	0.90	0.89	0.88	0.86
NJ0605004	FAIRTON FEDERAL CORRECTIONAL INSTITUTION	0.15	0.14	0.14	0.14	0.13	0.13	0.69	0.67	0.66	0.65	0.62
NJ0607001	HOPEWELL PLACE SENIOR APTS	0.09	0.09	0.09	0.09	0.09	0.09	7.00	6.98	6.97	6.95	6.95
NJ0609001	NJ STATE PRISON BAYSIDE	0.10	0.07	0.05	0.02	0.01	-0.02	0.10	0.06	0.03	0.01	-0.02
NJ0610001	MILLVILLE WATER DEPARTMENT	1.47	1.38	1.30	1.21	1.14	1.07	0.41	0.38	0.35	0.33	0.31
NJ0610002	COUNTRY MEADOWS RENTS AND SALES MHP LLC	0.07	0.07	0.07	0.07	0.07	0.07	2.54	2.51	2.48	2.45	2.43
NJ0612001	BAYSHORE MOBILE HOME PARK	N/A	N/A	N/A	N/A	N/A	N/A	N/A	N/A	N/A	N/A	N/A
NJ0613004	UPPER DEERFIELD TWP WATER DEPT	0.35	0.32	0.30	0.29	0.26	0.25	0.49	0.45	0.44	0.40	0.38
NJ0614002	PARKWOOD BRANCH TERRACES	0.03	0.02	0.02	0.01	0.01	0.01	0.28	0.22	0.17	0.12	0.08
NJ0614003	VINELAND WATER & SEWER UTILITY	1.16	0.97	0.80	0.65	0.50	0.36	0.12	0.10	0.08	0.06	0.04
NJ0614004	CHAPMAN MANUFACTURED HOUSING	0.08	0.08	0.07	0.07	0.07	0.07	3.28	3.20	3.14	3.07	3.01

Table D4. Deficit/surplus and the normalized future water availability for each water purveyor

PWSID	PWSID NAME	2015 Deficit/ Surplus	Future Water Availability (mgd)					Normalized Water Availability (-)				
			2015-2020	2015-2025	2015-2030	2015-2035	2015-2040	2015-2020	2015-2025	2015-2030	2015-2035	2015-2040
NJ0614005	UNITED MOBILE HOMES OF VINELAND	0.01	0.01	0.00	-0.01	-0.01	-0.02	0.06	-0.01	-0.07	-0.13	-0.18
NJ0701001	BELLEVILLE WATER DEPT	0.66	0.58	0.50	0.42	0.35	0.27	0.14	0.12	0.10	0.08	0.06
NJ0702001	BLOOMFIELD WATER DEPARTMENT	-0.14	-0.32	-0.50	-0.68	-0.85	-1.03	-0.04	-0.07	-0.09	-0.11	-0.14
NJ0703001	CALDWELL WATER DEPT	0.17	0.15	0.14	0.13	0.12	0.10	0.14	0.13	0.12	0.10	0.09
NJ0704001	CEDAR GROVE WATER DEPT	0.13	0.09	0.06	0.03	0.00	-0.03	0.05	0.03	0.02	0.00	-0.02
NJ0705001	EAST ORANGE WATER COMMISSION	5.12	4.92	4.73	4.53	4.34	4.15	0.61	0.58	0.56	0.54	0.51
NJ0706001	ESSEX FELS WATER DEPT	0.20	0.19	0.18	0.17	0.16	0.15	0.05	0.04	0.04	0.04	0.04
NJ0706002	ESSEX FELS WATER HILLTOP SYSTEM	0.08	0.08	0.08	0.08	0.07	0.07	0.44	0.44	0.43	0.43	0.43
NJ0707001	FAIRFIELD WATER DEPT	0.28	0.27	0.25	0.24	0.22	0.21	0.20	0.19	0.18	0.17	0.16
NJ0708001	GLEN RIDGE WATER DEPT	-0.64	-0.65	-0.67	-0.69	-0.71	-0.72	-0.44	-0.45	-0.46	-0.48	-0.49
NJ0710001	LIVINGSTON TWP DIV OF WATER	0.30	0.23	0.15	0.08	0.01	-0.06	0.06	0.04	0.02	0.00	-0.02
NJ0712001	NJ AMERICAN WATER - PASSAIC BASIN	6.42	5.70	4.98	4.27	3.55	2.83	0.10	0.09	0.07	0.06	0.05
NJ0713001	MONTCLAIR WATER BUREAU	2.48	2.37	2.25	2.14	2.03	1.91	0.43	0.41	0.39	0.37	0.35
NJ0714001	NEWARK WATER DEPARTMENT	19.71	18.30	16.88	15.46	14.04	12.63	0.22	0.20	0.18	0.17	0.15

Table D4. Deficit/surplus and the normalized future water availability for each water purveyor

PWSID	PWSID NAME	2015 Deficit/ Surplus	Future Water Availability (mgd)					Normalized Water Availability (-)				
			2015-2020	2015-2025	2015-2030	2015-2035	2015-2040	2015-2020	2015-2025	2015-2030	2015-2035	2015-2040
NJ0715001	NORTH CALDWELL WATER DEP	0.63	0.62	0.60	0.59	0.58	0.56	0.37	0.37	0.36	0.35	0.34
NJ0715002	NORTH CALDWELL - HILLTOP	N/A	N/A	N/A	N/A	N/A	N/A	N/A	N/A	N/A	N/A	N/A
NJ0716001	NUTLEY WATER DEPT	-0.51	-0.58	-0.65	-0.71	-0.78	-0.85	-0.14	-0.16	-0.17	-0.19	-0.21
NJ0717001	ORANGE WATER DEPT	-0.25	-0.32	-0.40	-0.47	-0.55	-0.62	-0.09	-0.11	-0.13	-0.15	-0.17
NJ0718001	ROSELAND WATER DEPT	0.04	0.03	0.01	0.00	-0.02	-0.03	0.02	0.01	0.00	-0.01	-0.03
NJ0719001	SOUTH ORANGE WATER DEPARTMENT	0.06	0.00	-0.05	-0.10	-0.16	-0.21	0.00	-0.02	-0.04	-0.06	-0.08
NJ0720001	VERONA WATER DEPARTMENT	0.89	0.86	0.83	0.81	0.78	0.75	0.47	0.45	0.44	0.42	0.41
NJ0721001	WEST CALDWELL WATER DEPARTMENT	0.13	0.10	0.08	0.05	0.02	-0.01	0.08	0.06	0.04	0.02	0.00
NJ0801001	CLAYTON WATER DEPARTMENT	0.29	0.24	0.13	0.01	-0.03	-0.05	0.43	0.23	0.03	-0.06	-0.09
NJ0802001	DEPTFORD TWP MUA	0.09	0.00	-0.22	-0.44	-0.53	-0.56	0.00	-0.08	-0.15	-0.19	-0.20
NJ0803001	EAST GREENWICH TWP WATER DEPT	0.10	0.06	-0.03	-0.12	-0.16	-0.17	0.06	-0.03	-0.12	-0.16	-0.17
NJ0804001	LAUX LAKEVIEW MOBILE H P INC	0.06	0.05	0.04	0.04	0.03	0.03	1.13	0.98	0.82	0.71	0.63
NJ0804308	OLDMANS CREEK CAMPGROUND	N/A	N/A	N/A	N/A	N/A	N/A	N/A	N/A	N/A	N/A	N/A
NJ0805001	IONA TRAILER PARK	N/A	N/A	N/A	N/A	N/A	N/A	N/A	N/A	N/A	N/A	N/A
NJ0805002	MALAGA MOBILE LLC	N/A	N/A	N/A	N/A	N/A	N/A	N/A	N/A	N/A	N/A	N/A
NJ0805003	MALAGA VILLA APARTMENTS	N/A	N/A	N/A	N/A	N/A	N/A	N/A	N/A	N/A	N/A	N/A

Table D4. Deficit/surplus and the normalized future water availability for each water purveyor

PWSID	PWSID NAME	2015 Deficit/ Surplus	Future Water Availability (mgd)					Normalized Water Availability (-)				
			2015-2020	2015-2025	2015-2030	2015-2035	2015-2040	2015-2020	2015-2025	2015-2030	2015-2035	2015-2040
NJ0805433	HOLLY GREEN CAMPGROUND	N/A	N/A	N/A	N/A	N/A	N/A	N/A	N/A	N/A	N/A	N/A
NJ0806001	GLASSBORO WATER DEPARTMENT	0.84	0.73	0.48	0.23	0.13	0.09	0.22	0.15	0.07	0.04	0.03
NJ0807001	GREENWICH TWP W DEPT	0.30	0.29	0.27	0.26	0.25	0.25	0.44	0.42	0.39	0.38	0.37
NJ0808001	NJ AMERICAN WATER - HARRISON	0.16	0.02	-0.29	-0.61	-0.74	-0.79	0.03	-0.30	-0.63	-0.77	-0.82
NJ0809001	NJ AMERICAN WATER - BRIDGEPORT	0.22	0.22	0.21	0.20	0.20	0.20	2.45	2.38	2.32	2.29	2.28
NJ0809002	NJ AMERICAN WATER - LOGAN	0.15	0.13	0.09	0.04	0.02	0.02	0.12	0.08	0.04	0.02	0.01
NJ0810004	MANTUA TOWNSHIP MUA	0.03	-0.08	-0.36	-0.63	-0.74	-0.79	-0.04	-0.18	-0.31	-0.37	-0.39
NJ0810005	MANOR WATER ASSOCIATIONS	0.09	0.08	0.08	0.08	0.08	0.08	5.72	5.59	5.47	5.41	5.40
NJ0811002	MONROE TWP MUA	0.05	-0.08	-0.36	-0.65	-0.77	-0.81	-0.02	-0.09	-0.16	-0.19	-0.20
NJ0812001	NATIONAL PARK WATER DEPARTMENT	0.06	0.06	0.05	0.03	0.03	0.03	0.24	0.19	0.14	0.12	0.11
NJ0813001	NEWFIELD WATER DEPARTMENT	0.26	0.26	0.25	0.25	0.24	0.24	0.74	0.72	0.71	0.70	0.70
NJ0814001	PAULSBORO WATER DEPARTMENT	0.28	0.27	0.26	0.25	0.24	0.24	0.41	0.39	0.37	0.36	0.36
NJ0815001	PITMAN WATER DEPARTMENT	0.01	-0.01	-0.05	-0.09	-0.11	-0.12	-0.01	-0.06	-0.11	-0.14	-0.14
NJ0816001	HARRISONVILLE MOBILE HOME PARK	0.08	0.05	0.00	-0.06	-0.08	-0.09	2.43	-0.07	-2.58	-3.64	-4.02

Table D4. Deficit/surplus and the normalized future water availability for each water purveyor

PWSID	PWSID NAME	2015 Deficit/ Surplus	Future Water Availability (mgd)					Normalized Water Availability (-)				
			2015-2020	2015-2025	2015-2030	2015-2035	2015-2040	2015-2020	2015-2025	2015-2030	2015-2035	2015-2040
NJ0817001	SWEDESBORO WATER DEPARTMENT	0.11	0.10	0.06	0.03	0.02	0.01	0.30	0.20	0.09	0.05	0.03
NJ0818004	WASHINGTON TOWNSHIP MUA	0.86	0.86	0.86	0.86	0.86	0.86	0.11	0.11	0.11	0.11	0.11
NJ0819001	WENONAH WATER DEPARTMENT	0.03	0.02	0.01	0.00	-0.01	-0.01	0.13	0.05	-0.02	-0.06	-0.07
NJ0820001	WEST DEPTFORD TWP WATER DEPT	0.29	0.19	-0.04	-0.27	-0.37	-0.40	0.07	-0.01	-0.10	-0.13	-0.15
NJ0821001	WESTVILLE WATER DEPARTMENT	0.20	0.19	0.17	0.14	0.13	0.13	0.41	0.36	0.31	0.28	0.28
NJ0822001	WOODBURY CITY W DEPT	0.23	0.22	0.20	0.18	0.17	0.17	0.19	0.17	0.15	0.15	0.14
NJ0823001	WOODBURY HEIGHTS W UTILITY	0.03	0.03	0.02	0.01	0.01	0.00	0.07	0.05	0.03	0.02	0.01
NJ0824001	AQUA NJ - WOOLWICH	0.58	0.37	-0.12	-0.61	-0.82	-0.89	0.57	-0.19	-0.94	-1.26	-1.37
NJ0901001	BAYONNE MUA	1.24	0.91	0.58	0.26	-0.07	-0.39	0.10	0.07	0.03	-0.01	-0.04
NJ0902001	EAST NEWARK W DEPT	2.31	2.26	2.22	2.18	2.13	2.09	5.22	5.12	5.02	4.92	4.82
NJ0904001	HARRISON WATER DEPARTMENT	-0.01	-0.39	-0.77	-1.16	-1.54	-1.92	-0.24	-0.48	-0.72	-0.96	-1.21
NJ0905001	HOBOKEN WATER DEPT	0.58	0.42	0.26	0.10	-0.06	-0.22	0.08	0.05	0.02	-0.01	-0.04
NJ0906001	JERSEY CITY MUA	4.99	2.73	0.47	-1.79	-4.06	-6.32	0.06	0.01	-0.04	-0.09	-0.13
NJ0907001	KEARNY WATER DEPARTMENT	2.58	2.53	2.48	2.44	2.39	2.34	0.25	0.24	0.24	0.23	0.23
NJ1001301	VALLEYVIEW HEALTHCARE & REHABILITATION CENTER	N/A	N/A	N/A	N/A	N/A	N/A	N/A	N/A	N/A	N/A	N/A

Table D4. Deficit/surplus and the normalized future water availability for each water purveyor

PWSID	PWSID NAME	2015 Deficit/ Surplus	Future Water Availability (mgd)					Normalized Water Availability (-)				
			2015-2020	2015-2025	2015-2030	2015-2035	2015-2040	2015-2020	2015-2025	2015-2030	2015-2035	2015-2040
NJ1004001	AQUA NJ INC - CALIFON	0.06	0.05	0.05	0.05	0.05	0.05	0.60	0.58	0.56	0.53	0.51
NJ1005001	CLINTON W DEPT	0.20	0.16	0.12	0.07	0.03	-0.02	0.08	0.06	0.04	0.01	-0.01
NJ1006300	TEEN CHALLENGE	N/A	N/A	N/A	N/A	N/A	N/A	N/A	N/A	N/A	N/A	N/A
NJ1006302	ROLLING HILLS CARE CENTER	N/A	N/A	N/A	N/A	N/A	N/A	N/A	N/A	N/A	N/A	N/A
NJ1007001	DELAWARE TOWNSHIP MUA	0.00	-0.01	-0.03	-0.04	-0.06	-0.07	-0.13	-0.28	-0.43	-0.58	-0.73
NJ1007002	ROSEMONT WATER DEPARTMENT	0.06	0.05	0.04	0.04	0.03	0.02	1.27	1.08	0.90	0.71	0.53
NJ1009001	FLEMINGTON WATER DEPARTMENT	0.20	0.20	0.19	0.19	0.18	0.18	0.36	0.35	0.34	0.33	0.32
NJ1011001	NJ AMERICAN WATER - FRENCHTOWN	0.13	0.13	0.13	0.13	0.13	0.13	1.39	1.38	1.37	1.36	1.35
NJ1012001	GLEN GARDNER W DEPT	0.06	0.06	0.06	0.05	0.05	0.05	0.64	0.61	0.58	0.56	0.53
NJ1013001	HAMPTON BOROUGH WATER DEPARTMENT	0.03	0.03	0.03	0.02	0.02	0.02	0.24	0.22	0.20	0.18	0.16
NJ1014001	HIGH BRIDGE W DEPT	0.06	0.06	0.05	0.05	0.05	0.04	0.13	0.12	0.11	0.10	0.10
NJ1015003	AQUA NJ INC - RIEGEL RIDGE	0.03	0.02	0.00	-0.01	-0.02	-0.04	0.31	0.06	-0.18	-0.43	-0.67
NJ1015004	AQUA NJ - FOX HILL	0.01	0.01	0.01	0.00	0.00	0.00	1.08	0.73	0.39	0.04	-0.31
NJ1017001	SUEZ WATER NEW JERSEY LAMBERTVILLE	0.37	0.34	0.32	0.29	0.26	0.23	0.56	0.52	0.47	0.43	0.38
NJ1019001	AQUA NJ INC - BUNNVALE	0.05	0.04	0.03	0.01	0.00	-0.01	1.65	1.09	0.52	-0.05	-0.61

Table D4. Deficit/surplus and the normalized future water availability for each water purveyor

PWSID	PWSID NAME	2015 Deficit/ Surplus	Future Water Availability (mgd)					Normalized Water Availability (-)				
			2015-2020	2015-2025	2015-2030	2015-2035	2015-2040	2015-2020	2015-2025	2015-2030	2015-2035	2015-2040
NJ1019002	HAGEDORN PSYCHIATRIC HOSPITAL	0.03	0.03	0.02	0.01	0.01	0.00	0.59	0.45	0.31	0.17	0.03
NJ1019003	CAMELOT AT SPRUCE RIDGE	N/A	N/A	N/A	N/A	N/A	N/A	N/A	N/A	N/A	N/A	N/A
NJ1019301	HUNTERDON HILL RCF	N/A	N/A	N/A	N/A	N/A	N/A	N/A	N/A	N/A	N/A	N/A
NJ1019311	LITTLE BROOK NURSING HOM	N/A	N/A	N/A	N/A	N/A	N/A	N/A	N/A	N/A	N/A	N/A
NJ1020001	MILFORD W DEPT	0.11	0.09	0.08	0.06	0.05	0.03	0.71	0.59	0.48	0.36	0.25
NJ1021363	HUNTERDON CARE CENTER	0.09	0.09	0.09	0.09	0.09	0.09	15.32	15.14	14.97	14.79	14.62
NJ1023001	STOCKTON WATER DEPARTMENT	0.04	0.04	0.04	0.04	0.04	0.04	0.28	0.28	0.27	0.27	0.26
NJ1024001	NJ AMERICAN WATER - OLDWICK	0.03	0.02	0.01	0.00	0.00	-0.01	0.98	0.60	0.22	-0.17	-0.55
NJ1025001	EDNA MAHAN CORRECTIONAL	-0.01	-0.01	-0.01	-0.01	-0.01	-0.01	-0.02	-0.03	-0.03	-0.03	-0.03
NJ1025313	COUNTRY ARCH CARE CENTER	0.03	0.03	0.03	0.03	0.03	0.03	1.28	1.28	1.28	1.27	1.27
NJ1101002	EAST WINDSOR MUA	0.88	0.84	0.75	0.66	0.62	0.60	0.31	0.28	0.24	0.23	0.22
NJ1103001	AQUA NJ - HAMILTON SQUARE	1.66	1.63	1.57	1.50	1.47	1.46	0.40	0.39	0.37	0.37	0.36
NJ1104001	HIGHTSTOWN WATER DEPARTMENT	0.56	0.55	0.55	0.54	0.54	0.54	0.82	0.81	0.80	0.80	0.80
NJ1105001	HOPEWELL BORO W DEPT	0.05	0.05	0.04	0.04	0.04	0.04	0.19	0.18	0.18	0.17	0.15
NJ1106001	HOPEWELL TOWNSHIP WATER & SEWER	0.05	0.05	0.04	0.04	0.03	0.02	0.86	0.78	0.71	0.52	0.34

Table D4. Deficit/surplus and the normalized future water availability for each water purveyor

PWSID	PWSID NAME	2015 Deficit/ Surplus	Future Water Availability (mgd)					Normalized Water Availability (-)				
			2015-2020	2015-2025	2015-2030	2015-2035	2015-2040	2015-2020	2015-2025	2015-2030	2015-2035	2015-2040
NJ1106002	MERCER COUNTY CORRECTIONAL CEN	-0.04	-0.05	-0.06	-0.07	-0.09	-0.11	-0.26	-0.32	-0.37	-0.49	-0.62
NJ1107001	LAWRENCEVILLE SCHOOL	0.05	0.05	0.05	0.05	0.05	0.05	0.59	0.58	0.57	0.56	0.56
NJ1107002	AQUA NJ - LAWRENCE	0.33	0.33	0.32	0.31	0.31	0.30	0.38	0.37	0.36	0.35	0.35
NJ1108001	PENNINGTON W DEPT	0.12	0.11	0.10	0.09	0.09	0.09	0.43	0.39	0.35	0.33	0.33
NJ1111001	TRENTON WATER WORKS	6.93	6.78	6.43	6.07	5.81	5.63	0.21	0.19	0.18	0.18	0.17
NJ1204001	EAST BRUNSWICK TWP WATER & SEWER UTILITY	-1.34	-1.49	-1.64	-1.78	-1.93	-2.07	-0.15	-0.16	-0.18	-0.19	-0.21
NJ1205001	NJ AMERICAN WATER - EDISON SYSTEM	6.32	6.20	6.08	5.95	5.83	5.71	0.79	0.77	0.75	0.74	0.72
NJ1206001	HELMETTA WATER DEPT	0.03	0.01	0.00	-0.01	-0.03	-0.04	0.06	0.00	-0.05	-0.11	-0.16
NJ1207001	HIGHLAND PARK W DEPT	0.11	0.09	0.08	0.06	0.05	0.03	0.05	0.04	0.04	0.03	0.02
NJ1209002	OLD BRIDGE MUA	3.92	3.57	3.21	2.85	2.49	2.13	0.39	0.35	0.31	0.27	0.23
NJ1212001	MILLTOWN W DEPT	0.57	0.49	0.42	0.34	0.26	0.19	0.78	0.66	0.54	0.42	0.30
NJ1213002	MONROE TOWNSHIP UTILITY DEPARTMENT	0.42	0.26	0.10	-0.06	-0.22	-0.38	0.05	0.02	-0.01	-0.04	-0.08
NJ1213321	JAMESBURG MANOR	N/A	N/A	N/A	N/A	N/A	N/A	N/A	N/A	N/A	N/A	N/A
NJ1214001	NEW BRUNSWICK WATER DEPARTMENT	1.63	1.12	0.61	0.10	-0.42	-0.93	0.07	0.04	0.01	-0.03	-0.06

Table D4. Deficit/surplus and the normalized future water availability for each water purveyor

PWSID	PWSID NAME	2015 Deficit/ Surplus	Future Water Availability (mgd)					Normalized Water Availability (-)				
			2015-2020	2015-2025	2015-2030	2015-2035	2015-2040	2015-2020	2015-2025	2015-2030	2015-2035	2015-2040
NJ1215001	NORTH BRUNSWICK WATER DEPARTMENT	1.41	1.12	0.84	0.55	0.26	-0.22	0.17	0.12	0.08	0.04	-0.003
NJ1216001	PERTH AMBOY WATER DEPARTMENT	0.52	0.36	0.20	0.05	-0.11	-0.27	0.06	0.03	0.01	-0.02	-0.05
NJ1219001	SAYREVILLE W DEPT	1.50	1.20	0.91	0.61	0.31	0.02	0.19	0.14	0.10	0.05	0.00
NJ1221004	SOUTH BRUNSWICK TOWNSHIP WATER DIVISION	1.93	1.50	1.07	0.64	0.21	-0.22	0.17	0.12	0.07	0.02	-0.02
NJ1223001	SOUTH RIVER W DEPT	-0.61	-0.66	-0.71	-0.76	-0.81	-0.86	-0.52	-0.56	-0.60	-0.64	-0.68
NJ1224001	SPOTSWOOD W DEPT	-0.17	-0.20	-0.23	-0.26	-0.29	-0.32	-0.16	-0.18	-0.20	-0.23	-0.25
NJ1225001	MIDDLESEX WATER COMPANY	6.03	5.08	4.13	3.18	2.24	1.29	0.08	0.06	0.051	0.036	0.02
NJ1302001	ALLENTOWN WATER DEPT	0.07	0.07	0.07	0.07	0.07	0.07	0.34	0.34	0.34	0.34	0.34
NJ1304001	ATLANTIC HIGHLANDS WATER	0.13	0.13	0.13	0.12	0.12	0.12	0.32	0.31	0.30	0.30	0.29
NJ1305001	AVON BY THE SEA WATER DE	-0.01	-0.01	-0.01	-0.01	-0.01	-0.01	-0.03	-0.03	-0.03	-0.03	-0.03
NJ1306001	BELMAR WATER DEPT	0.01	0.00	0.00	0.00	0.00	0.00	0.01	0.00	0.00	0.00	0.00
NJ1308001	BRIELLE WATER DEPT	0.01	0.01	0.00	0.00	0.00	-0.01	0.01	0.00	0.00	0.00	-0.01
NJ1309001	US NAVAL WEAPONS STATION	-0.09	-0.11	-0.13	-0.16	-0.18	-0.21	-1.28	-1.55	-1.83	-2.11	-2.38
NJ1309002	S B WATER COMPANY	-0.13	-0.14	-0.14	-0.15	-0.15	-0.16	-1.04	-1.08	-1.13	-1.17	-1.21

Table D4. Deficit/surplus and the normalized future water availability for each water purveyor

PWSID	PWSID NAME	2015 Deficit/ Surplus	Future Water Availability (mgd)					Normalized Water Availability (-)				
			2015-2020	2015-2025	2015-2030	2015-2035	2015-2040	2015-2020	2015-2025	2015-2030	2015-2035	2015-2040
NJ1309415	BRANDYWINE ASSISTED LIVING AT COLTS NECK	0.07	0.07	0.07	0.07	0.07	0.07	2.71	2.68	2.65	2.63	2.60
NJ1312001	ENGLISHTOWN WATER DEPT	-0.01	-0.01	-0.01	-0.02	-0.02	-0.02	-0.04	-0.05	-0.06	-0.07	-0.08
NJ1314001	FARMINGDALE WATER DEPT	0.05	0.04	0.04	0.04	0.04	0.04	0.30	0.28	0.27	0.26	0.25
NJ1315001	FREEHOLD BOROUGH WATER DEPARTMENT	0.11	0.10	0.09	0.08	0.06	0.05	0.07	0.06	0.05	0.05	0.04
NJ1316001	FREEHOLD TWP WATER DEPT	0.94	0.87	0.80	0.74	0.67	0.60	0.21	0.19	0.17	0.16	0.14
NJ1319003	ANGLE INN MOTOR COURT	0.00	-0.01	-0.02	-0.02	-0.03	-0.04	0.00	0.00	0.00	0.00	0.00
NJ1319007	PARKWAY WATER COMPANY	0.62	0.52	0.42	0.32	0.22	0.12	0.88	0.71	0.54	0.37	0.20
NJ1319008	WINDING BROOK MHP SYS 1	0.07	0.07	0.07	0.06	0.06	0.06	2.21	2.15	2.09	2.04	1.98
NJ1319009	WINDING BROOK MHP SYSTEM 2	-0.02	-0.02	-0.02	-0.03	-0.03	-0.04	-1.25	-1.50	-1.75	-2.00	-2.25
NJ1319010	GREEN ACRES NJ MHC LLC	0.07	0.06	0.06	0.05	0.05	0.04	2.00	1.82	1.64	1.46	1.29
NJ1321001	KEANSBURG WATER & SEWER DEPT.	0.28	0.27	0.27	0.26	0.26	0.25	0.35	0.34	0.34	0.33	0.32
NJ1322001	KEYPORT WATER DEPT	0.18	0.17	0.17	0.16	0.16	0.15	0.27	0.26	0.25	0.24	0.24
NJ1326001	GORDONS CORNER WATER CO	0.10	0.01	-0.07	-0.16	-0.24	-0.33	0.00	-0.01	-0.03	-0.05	-0.06
NJ1326002	SUEZ WATER MANALAPAN KNOB HILL	0.73	0.72	0.71	0.70	0.69	0.67	0.46	0.46	0.45	0.44	0.43

Table D4. Deficit/surplus and the normalized future water availability for each water purveyor

PWSID	PWSID NAME	2015 Deficit/ Surplus	Future Water Availability (mgd)					Normalized Water Availability (-)				
			2015-2020	2015-2025	2015-2030	2015-2035	2015-2040	2015-2020	2015-2025	2015-2030	2015-2035	2015-2040
NJ1326004	SUEZ WATER MATCHAPONIX	0.64	0.58	0.52	0.47	0.41	0.35	0.12	0.11	0.10	0.08	0.07
NJ1326005	SUEZ WATER MANALAPAN MILLHURST	0.20	0.20	0.19	0.19	0.18	0.18	6.47	6.34	6.21	6.09	5.96
NJ1326007	SUEZ WATER MANALAPAN TRACEY STATION	0.12	0.12	0.11	0.11	0.11	0.11	1.37	1.36	1.34	1.32	1.30
NJ1326321	MARIANNE MANOR	0.00	0.00	0.00	0.00	0.00	0.00	0.00	0.00	0.00	0.00	0.00
NJ1327001	MANASQUAN WATER DEPARTMENT	0.05	0.04	0.04	0.04	0.03	0.03	0.06	0.06	0.05	0.05	0.04
NJ1328002	MARLBORO TOWNSHIP WATER UTILITY DIVISION	-1.37	-1.42	-1.48	-1.53	-1.59	-1.64	-0.17	-0.18	-0.19	-0.20	-0.20
NJ1328003	MARLBORO STATE HOSPITAL	0.27	0.26	0.26	0.26	0.26	0.26	5.34	5.33	5.31	5.30	5.28
NJ1329001	MATAWAN BOROUGH WATER DE	0.02	0.01	0.00	-0.01	-0.02	-0.03	0.02	0.00	-0.01	-0.02	-0.04
NJ1330002	ABERDEEN - CLIFFWOOD/CLIFFWOOD BEACH	1.51	1.50	1.48	1.47	1.45	1.44	1.59	1.58	1.56	1.54	1.53
NJ1330003	ABERDEEN- HIGH SCHOOL/OAKSHADE AREA	0.02	0.02	0.01	0.01	0.01	0.00	0.13	0.10	0.08	0.05	0.03
NJ1330004	ABERDEEN - FRENEAU	-0.02	-0.02	-0.02	-0.02	-0.02	-0.02	-1.03	-1.07	-1.10	-1.14	-1.17
NJ1331001	GATEWAY NATIONAL REC ARE	0.02	0.02	0.02	0.02	0.02	0.02	0.16	0.15	0.15	0.14	0.13
NJ1332314	MILLSTONE MANOR	0.00	-0.01	-0.02	-0.04	-0.05	-0.06	0.00	0.00	0.00	0.00	0.00

Table D4. Deficit/surplus and the normalized future water availability for each water purveyor

PWSID	PWSID NAME	2015 Deficit/ Surplus	Future Water Availability (mgd)					Normalized Water Availability (-)				
			2015-2020	2015-2025	2015-2030	2015-2035	2015-2040	2015-2020	2015-2025	2015-2030	2015-2035	2015-2040
NJ1339001	SHORELANDS WATER CO INC	0.16	0.09	0.01	-0.06	-0.13	-0.20	0.02	0.00	-0.01	-0.03	-0.04
NJ1340001	RED BANK WATER DEPT	0.32	0.30	0.28	0.26	0.24	0.22	0.20	0.19	0.17	0.16	0.15
NJ1341001	ROOSEVELT WATER DEPT	0.03	0.03	0.03	0.03	0.03	0.03	0.25	0.25	0.24	0.24	0.24
NJ1344001	SEA GIRT WATER DEPT	0.00	0.00	0.00	0.00	0.00	0.00	-0.01	-0.01	-0.01	-0.01	-0.01
NJ1345001	NJ AMERICAN WATER - COASTAL NORTH	4.78	3.46	2.14	0.82	-0.49	-1.81	0.07	0.05	0.02	-0.01	-0.04
NJ1347001	LAKE COMO WATER DEPT	-0.03	-0.03	-0.03	-0.03	-0.03	-0.03	-0.18	-0.18	-0.18	-0.18	-0.18
NJ1348001	SPRING LAKE WATER DEPARTMENT	0.13	0.13	0.13	0.12	0.12	0.12	0.28	0.28	0.28	0.28	0.28
NJ1349001	BOROUGH OF SPRINGLAKE HEIGHTS	0.22	0.22	0.22	0.22	0.22	0.22	0.49	0.48	0.48	0.48	0.47
NJ1350001	NJ AMERICAN WATER - UNION BEACH	-0.11	-0.12	-0.12	-0.12	-0.13	-0.13	-0.19	-0.20	-0.20	-0.21	-0.21
NJ1352003	WALL TWP WATER DEPT	0.28	0.19	0.11	0.02	-0.07	-0.15	0.08	0.04	0.01	-0.03	-0.06
NJ1401001	BOONTON WATER DEPT	0.42	0.40	0.38	0.37	0.35	0.33	0.37	0.35	0.33	0.32	0.30
NJ1401002	BOONTON TWP WATER DEPT	0.20	0.20	0.19	0.19	0.19	0.18	2.24	2.19	2.15	2.10	2.06
NJ1403001	BUTLER WATER DEPT	2.68	2.66	2.64	2.62	2.61	2.59	2.08	2.07	2.05	2.04	2.02
NJ1404001	CHATHAM WATER DEPT	0.30	0.30	0.30	0.29	0.29	0.29	0.32	0.32	0.32	0.31	0.31

Table D4. Deficit/surplus and the normalized future water availability for each water purveyor

PWSID	PWSID NAME	2015 Deficit/ Surplus	Future Water Availability (mgd)					Normalized Water Availability (-)				
			2015-2020	2015-2025	2015-2030	2015-2035	2015-2040	2015-2020	2015-2025	2015-2030	2015-2035	2015-2040
NJ1406002	WINDY ACRES MOBILE HOME	N/A	N/A	N/A	N/A	N/A	N/A	N/A	N/A	N/A	N/A	N/A
NJ1407001	AWM FOUR SEASONS AT CHESTER	0.01	0.01	0.01	0.00	0.00	0.00	0.06	0.06	0.06	0.06	0.05
NJ1408001	DENVILLE TWP WATER DEPT	0.47	0.44	0.40	0.36	0.32	0.28	0.16	0.14	0.13	0.12	0.10
NJ1409001	DOVER WATER COMMISSION	0.11	0.07	0.03	-0.01	-0.05	-0.09	0.02	0.01	0.00	-0.02	-0.03
NJ1410001	EAST HANOVER TWP WATER DEPT	-0.49	-0.52	-0.55	-0.57	-0.60	-0.63	-0.18	-0.19	-0.20	-0.21	-0.22
NJ1411001	FLORHAM PARK WATER DEPT	-0.23	-0.27	-0.30	-0.34	-0.37	-0.41	-0.14	-0.15	-0.17	-0.19	-0.21
NJ1413001	LAKESHORE COMPANY	0.04	0.04	0.03	0.03	0.02	0.01	0.67	0.56	0.45	0.34	0.23
NJ1414003	JEFFERSON TWP W U MILTON SYSTEM	-0.09	-0.09	-0.09	-0.09	-0.09	-0.09	-0.14	-0.14	-0.14	-0.14	-0.14
NJ1414006	LOZIERS TRAILER PARK	N/A	N/A	N/A	N/A	N/A	N/A	N/A	N/A	N/A	N/A	N/A
NJ1414008	OAK RIDGE MOBILE HOME PARK	N/A	N/A	N/A	N/A	N/A	N/A	N/A	N/A	N/A	N/A	N/A
NJ1414011	JEFFERSON TWP WATER UTILITY LAKE HOPATCONG	0.37	0.37	0.36	0.36	0.36	0.36	0.47	0.47	0.47	0.47	0.47
NJ1414013	SUN VALLEY PARK	0.07	0.07	0.07	0.07	0.07	0.07	2.10	2.10	2.10	2.10	2.10
NJ1414014	SANDY POINT MOBILE HOME	N/A	N/A	N/A	N/A	N/A	N/A	N/A	N/A	N/A	N/A	N/A
NJ1414016	JEFFERSON TWP W U VASSAR ROAD	0.00	0.00	0.00	0.00	0.00	0.00	0.29	0.29	0.29	0.29	0.29

Table D4. Deficit/surplus and the normalized future water availability for each water purveyor

PWSID	PWSID NAME	2015 Deficit/ Surplus	Future Water Availability (mgd)					Normalized Water Availability (-)				
			2015-2020	2015-2025	2015-2030	2015-2035	2015-2040	2015-2020	2015-2025	2015-2030	2015-2035	2015-2040
NJ1415001	FAYSON LAKES WATER COMPANY INC	0.03	0.03	0.03	0.03	0.03	0.03	0.15	0.15	0.15	0.15	0.15
NJ1415002	KINNELON WATER DEPT	0.40	0.40	0.40	0.40	0.40	0.40	1.13	1.13	1.13	1.13	1.13
NJ1416001	BOROUGH OF LINCOLN PARK WATER DEPT	0.12	0.10	0.09	0.07	0.05	0.04	0.05	0.05	0.04	0.03	0.02
NJ1416004	BOROUGH OF LINCOLN PARK JACKSONVILLE SYST	-0.02	-0.02	-0.02	-0.02	-0.02	-0.02	-0.15	-0.15	-0.16	-0.16	-0.17
NJ1417001	MADISON WATER DEPT	0.62	0.60	0.58	0.57	0.55	0.53	0.33	0.32	0.31	0.30	0.30
NJ1418002	SISTERS OF CHRISTIAN CHARITY	N/A	N/A	N/A	N/A	N/A	N/A	N/A	N/A	N/A	N/A	N/A
NJ1419001	ROXITICUS WATER COMPANY INC.	N/A	N/A	N/A	N/A	N/A	N/A	N/A	N/A	N/A	N/A	N/A
NJ1420001	MINE HILL TWP WATER DEPT	0.03	0.02	0.01	0.00	-0.01	-0.02	0.06	0.03	0.00	-0.03	-0.05
NJ1421003	MONTVILLE TWP MUA	0.58	0.55	0.52	0.49	0.45	0.42	0.24	0.22	0.21	0.20	0.18
NJ1421305	ST ALBERTS RESIDENTIAL HEALTH CENTER	N/A	N/A	N/A	N/A	N/A	N/A	N/A	N/A	N/A	N/A	N/A
NJ1422001	SISTERS OF CHARITY OF SE	0.03	0.02	0.02	0.02	0.02	0.02	0.32	0.30	0.28	0.25	0.23
NJ1424001	SOUTHEAST MORRIS COUNTY MUA	4.65	4.48	4.31	4.14	3.97	3.80	0.34	0.33	0.32	0.31	0.29
NJ1425001	MOUNTAIN LAKES WATER DEP	0.03	0.02	0.01	0.01	0.00	0.00	0.02	0.02	0.01	0.00	0.00
NJ1426002	MOUNT ARLINGTON DPW KADEL SYS	0.00	0.00	0.00	0.00	-0.01	-0.01	0.00	0.00	0.00	0.00	0.00

Table D4. Deficit/surplus and the normalized future water availability for each water purveyor

PWSID	PWSID NAME	2015 Deficit/ Surplus	Future Water Availability (mgd)					Normalized Water Availability (-)				
			2015-2020	2015-2025	2015-2030	2015-2035	2015-2040	2015-2020	2015-2025	2015-2030	2015-2035	2015-2040
NJ1426004	SUEZ WATER NEW JERSEY ARLINGTON HILLS	0.00	0.00	-0.01	-0.01	-0.01	-0.02	-0.02	-0.03	-0.04	-0.05	-0.07
NJ1426005	MOUNT ARLINGTON BORO DPW MAIN	-0.11	-0.11	-0.11	-0.12	-0.12	-0.12	-0.28	-0.29	-0.29	-0.30	-0.31
NJ1427001	MT OLIVE VILLAGES WATER	0.13	0.12	0.12	0.11	0.10	0.10	0.51	0.48	0.45	0.42	0.39
NJ1427002	MOUNT OLIVE TWP - GOLDMINE SYSTEM	N/A	N/A	N/A	N/A	N/A	N/A	N/A	N/A	N/A	N/A	N/A
NJ1427005	MOUNT OLIVE TWP - FLANDERS	-0.45	-0.46	-0.47	-0.48	-0.49	-0.50	-0.51	-0.53	-0.54	-0.55	-0.56
NJ1427006	MOUNT OLIVE TWP - SAND	0.14	0.14	0.14	0.14	0.14	0.14	2.30	2.28	2.27	2.25	2.23
NJ1427007	MOUNT OLIVE TWP - VILLAGE	0.23	0.22	0.22	0.21	0.21	0.20	1.53	1.50	1.46	1.43	1.39
NJ1427008	MOUNT OLIVE TWP - PINECREST	0.04	0.04	0.04	0.03	0.03	0.03	0.64	0.63	0.61	0.59	0.58
NJ1427009	NJ AMERICAN WATER - MOUNT OLIVE - WEST JERSEY	0.04	0.03	0.03	0.03	0.03	0.03	0.71	0.68	0.66	0.63	0.61
NJ1427010	NJ VASA HOME WATER SYS	N/A	N/A	N/A	N/A	N/A	N/A	N/A	N/A	N/A	N/A	N/A
NJ1427012	MOUNT OLIVE TWP - LYNWOOD	0.01	0.01	0.01	0.01	0.01	0.01	3.40	3.38	3.36	3.34	3.32
NJ1427014	MOUNT OLIVE TWP - CARLTON HILLS	0.01	0.01	0.01	0.01	0.01	0.01	0.19	0.18	0.17	0.17	0.16
NJ1427015	MOUNT OLIVE TWP - TINC FARM	0.14	0.14	0.14	0.14	0.14	0.14	2.27	2.25	2.24	2.23	2.21
NJ1427016	AWM COUNTRY OAKS	0.02	0.02	0.02	0.02	0.02	0.02	0.59	0.57	0.56	0.54	0.52

Table D4. Deficit/surplus and the normalized future water availability for each water purveyor

PWSID	PWSID NAME	2015 Deficit/ Surplus	Future Water Availability (mgd)					Normalized Water Availability (-)				
			2015-2020	2015-2025	2015-2030	2015-2035	2015-2040	2015-2020	2015-2025	2015-2030	2015-2035	2015-2040
NJ1427017	NJ AMERICAN WATER - ITC	0.20	0.19	0.18	0.18	0.17	0.16	0.50	0.48	0.46	0.43	0.41
NJ1427018	MORRIS CHASE/MORRIS HUNT PCWS	0.12	0.12	0.11	0.11	0.11	0.11	1.54	1.52	1.50	1.48	1.46
NJ1428001	NETCONG WATER DEPT	0.20	0.19	0.18	0.18	0.17	0.17	0.66	0.64	0.62	0.60	0.58
NJ1429001	PARSIPPANY-TROY HILLS WATER DEPARTMENT	1.51	1.41	1.32	1.22	1.12	1.02	0.22	0.20	0.19	0.17	0.16
NJ1431001	PEQUANNOCK TWP WATER DEPARTMENT	0.95	0.94	0.93	0.92	0.90	0.89	0.58	0.58	0.57	0.56	0.55
NJ1431002	PEQUANNOCK TWP WD-CEDAR CREST	N/A	N/A	N/A	N/A	N/A	N/A	N/A	N/A	N/A	N/A	N/A
NJ1432001	MORRIS COUNTY MUA	0.01	-0.01	-0.03	-0.06	-0.08	-0.10	0.00	-0.01	-0.01	-0.01	-0.02
NJ1432003	RANDOLPH TWP PUBLIC WORKS DEPT	0.17	0.16	0.15	0.14	0.13	0.12	0.06	0.06	0.05	0.05	0.05
NJ1433001	RIVERDALE BORO WATER DEP	0.43	0.41	0.39	0.36	0.34	0.32	0.48	0.46	0.43	0.40	0.37
NJ1434001	ROCKAWAY BORO WATER DEPT	0.13	0.12	0.10	0.09	0.08	0.06	0.09	0.08	0.07	0.06	0.05
NJ1435001	HOFFMAN HOMES COMMUNITY LLC	N/A	N/A	N/A	N/A	N/A	N/A	N/A	N/A	N/A	N/A	N/A
NJ1435002	ROCKAWAY TWP WATER DEPT	0.12	0.12	0.12	0.12	0.11	0.11	0.08	0.08	0.07	0.07	0.07
NJ1435003	AWO&M - PICATINNY ARSENAL	N/A	N/A	N/A	N/A	N/A	N/A	N/A	N/A	N/A	N/A	N/A
NJ1436002	ROXBURY WATER CO	0.25	0.23	0.20	0.17	0.14	0.11	0.23	0.20	0.17	0.15	0.12

Table D4. Deficit/surplus and the normalized future water availability for each water purveyor

PWSID	PWSID NAME	2015 Deficit/ Surplus	Future Water Availability (mgd)					Normalized Water Availability (-)				
			2015-2020	2015-2025	2015-2030	2015-2035	2015-2040	2015-2020	2015-2025	2015-2030	2015-2035	2015-2040
NJ1436003	ROXBURY TWP W DEPT-SHORE	0.36	0.35	0.33	0.32	0.31	0.30	0.43	0.41	0.40	0.39	0.37
NJ1436004	ROXBURY TWP W DEPT-SKY V	0.14	0.13	0.12	0.11	0.10	0.09	0.89	0.82	0.75	0.68	0.61
NJ1438001	AQUA NJ CLIFFSIDE PARK	0.04	0.04	0.04	0.04	0.04	0.04	3.16	3.16	3.16	3.15	3.15
NJ1438003	WASHINGTON TWP MUA-HAGER	-0.02	-0.02	-0.03	-0.04	-0.05	-0.06	-0.04	-0.06	-0.07	-0.09	-0.10
NJ1438004	WASHINGTON TWP MUA-SCHOOLEYS MOUNTAIN	-0.03	-0.03	-0.03	-0.03	-0.03	-0.03	-0.06	-0.06	-0.06	-0.06	-0.06
NJ1438006	SHERWOOD VILLAGE	N/A	N/A	N/A	N/A	N/A	N/A	N/A	N/A	N/A	N/A	N/A
NJ1439001	WHARTON WATER DEPT	0.42	0.42	0.41	0.41	0.41	0.40	0.24	0.24	0.24	0.23	0.23
NJ1501001	BARNEGAT LIGHT WATER DEP	-0.12	-0.12	-0.13	-0.13	-0.14	-0.14	-0.12	-0.13	-0.13	-0.14	-0.14
NJ1503001	BEACH HAVEN WATER DEPT	0.21	0.21	0.20	0.19	0.19	0.18	0.39	0.38	0.37	0.35	0.34
NJ1504001	BEACHWOOD WATER DEPT	0.09	0.04	-0.01	-0.06	-0.10	-0.15	0.04	-0.01	-0.06	-0.11	-0.17
NJ1505002	AQUA NJ - EASTERN DIVISION	0.03	-0.05	-0.12	-0.20	-0.27	-0.35	-0.06	-0.14	-0.23	-0.32	-0.41
NJ1505003	SHORE WATER COMPANY	0.06	0.06	0.05	0.05	0.04	0.04	0.15	0.14	0.13	0.11	0.10
NJ1505004	BERKELEY TWP MUA	0.85	0.79	0.72	0.66	0.60	0.54	0.73	0.67	0.61	0.56	0.50
NJ1506001	BRICK TOWNSHIP MUA	5.63	5.20	4.77	4.35	3.92	3.49	0.53	0.49	0.45	0.40	0.36
NJ1507005	SUEZ WATER TOMS RIVER INC	3.51	2.83	2.15	1.47	0.79	0.10	0.23	0.18	0.12	0.06	0.01

Table D4. Deficit/surplus and the normalized future water availability for each water purveyor

PWSID	PWSID NAME	2015 Deficit/ Surplus	Future Water Availability (mgd)					Normalized Water Availability (-)				
			2015-2020	2015-2025	2015-2030	2015-2035	2015-2040	2015-2020	2015-2025	2015-2030	2015-2035	2015-2040
NJ1507007	NJ AMERICAN WATER - ORTLEY BEACH	-0.52	-0.52	-0.53	-0.53	-0.54	-0.54	-1.01	-1.02	-1.03	-1.04	-1.05
NJ1507008	NJ AMERICAN WATER - PELICAN ISLAND	-0.40	-0.40	-0.40	-0.40	-0.40	-0.40	-1.00	-1.00	-1.00	-1.01	-1.01
NJ1508001	EAGLESWOOD VILLAGE MHP	0.08	0.02	-0.04	-0.10	-0.16	-0.22	1.27	-2.14	-5.54	-8.95	-12.36
NJ1509001	HARVEY CEDARS WATER DEPT	-0.11	-0.11	-0.12	-0.12	-0.12	-0.12	-0.13	-0.13	-0.13	-0.13	-0.13
NJ1510001	ISLAND HEIGHTS WATER DEP	0.05	0.04	0.04	0.04	0.03	0.03	0.21	0.19	0.18	0.16	0.15
NJ1511001	JACKSON TWP MUA	2.02	1.28	0.55	-0.19	-0.93	-1.67	0.37	0.16	-0.06	-0.27	-0.48
NJ1511002	JACKSON ACRES MHP	0.04	0.04	0.03	0.02	0.01	0.00	0.65	0.48	0.32	0.15	-0.02
NJ1511003	LAND O PINES MOBILE HOME PARK	0.00	0.00	-0.01	-0.01	-0.01	-0.01	0.00	0.00	0.00	0.00	0.00
NJ1511004	MAPLE GLEN MOBILE HOME PARK	0.00	0.00	0.00	-0.01	-0.01	-0.01	0.00	0.00	0.00	0.00	0.00
NJ1511005	OAK TREE MOBILE HOME PARK	0.07	0.07	0.06	0.06	0.05	0.04	2.45	2.24	2.02	1.81	1.59
NJ1511007	SILVER PINE PARK LAND LLC	0.00	0.00	0.00	-0.01	-0.01	-0.01	0.00	0.00	0.00	0.00	0.00
NJ1511008	SOUTH WIND MOBILE HOME V	0.03	0.01	0.00	-0.01	-0.03	-0.04	0.16	-0.01	-0.19	-0.36	-0.53
NJ1511010	USDOD JOINT BASE MCGUIRE DIX LAKEHURST	0.36	0.35	0.34	0.33	0.32	0.31	1.91	1.85	1.79	1.74	1.68
NJ1511011	ALL SEASONS MHP	0.00	0.00	0.00	0.00	-0.01	-0.01	0.00	0.00	0.00	0.00	0.00
NJ1511013	FOUNTAINHEAD PARKS INC	0.06	0.06	0.05	0.05	0.04	0.04	1.68	1.51	1.35	1.18	1.02

Table D4. Deficit/surplus and the normalized future water availability for each water purveyor

PWSID	PWSID NAME	2015 Deficit/ Surplus	Future Water Availability (mgd)					Normalized Water Availability (-)				
			2015-2020	2015-2025	2015-2030	2015-2035	2015-2040	2015-2020	2015-2025	2015-2030	2015-2035	2015-2040
NJ1511016	MEADOWBROOK CO-OP INC	0.09	0.09	0.08	0.08	0.08	0.07	7.96	7.68	7.39	7.10	6.81
NJ1512001	LACEY TWP MUA	0.59	0.39	0.20	0.00	-0.20	-0.40	0.19	0.10	0.00	-0.10	-0.20
NJ1513001	LAKEHURST WATER DEPT	0.13	0.12	0.11	0.10	0.09	0.08	0.33	0.30	0.27	0.24	0.22
NJ1514002	LAKEWOOD TWP MUA	0.08	-0.14	-0.35	-0.57	-0.79	-1.00	-0.02	-0.06	-0.10	-0.14	-0.18
NJ1515001	LAVALLETTE WATER DEPT	0.12	0.12	0.12	0.12	0.12	0.11	0.34	0.34	0.33	0.33	0.32
NJ1516001	LITTLE EGG HARBOR TWP MU	0.70	0.48	0.25	0.02	-0.21	-0.44	0.33	0.17	0.01	-0.15	-0.30
NJ1517001	LONG BEACH TWP BRANT BEACH	0.04	0.03	0.02	0.01	0.00	-0.01	0.01	0.01	0.00	0.00	0.00
NJ1517002	LONG BEACH TWP WATER DEPT HOLGATE	0.06	0.06	0.06	0.06	0.06	0.06	0.30	0.29	0.29	0.28	0.27
NJ1517003	LONG BEACH TWP NORTH BEACH	N/A	N/A	N/A	N/A	N/A	N/A	N/A	N/A	N/A	N/A	N/A
NJ1517004	LONG BEACH TWP LOVE LADIES SOUTH	N/A	N/A	N/A	N/A	N/A	N/A	N/A	N/A	N/A	N/A	N/A
NJ1517005	LONG BEACH TWP LOVE LADIES NORTH	N/A	N/A	N/A	N/A	N/A	N/A	N/A	N/A	N/A	N/A	N/A
NJ1517006	LONG BEACH TWP HIGH BAR HARBOR	N/A	N/A	N/A	N/A	N/A	N/A	N/A	N/A	N/A	N/A	N/A
NJ1518001	CEDAR GLEN HOMES INC	0.04	0.03	0.02	0.02	0.01	0.00	0.48	0.36	0.24	0.13	0.01
NJ1518002	CEDAR GLEN LAKES WATER C	0.06	0.04	0.02	0.00	-0.02	-0.04	0.27	0.13	-0.02	-0.16	-0.31
NJ1518003	CEDAR GLEN WEST WATER CO	-0.01	-0.02	-0.03	-0.04	-0.05	-0.07	-0.15	-0.24	-0.34	-0.44	-0.53

Table D4. Deficit/surplus and the normalized future water availability for each water purveyor

PWSID	PWSID NAME	2015 Deficit/ Surplus	Future Water Availability (mgd)					Normalized Water Availability (-)				
			2015-2020	2015-2025	2015-2030	2015-2035	2015-2040	2015-2020	2015-2025	2015-2030	2015-2035	2015-2040
NJ1518004	MANCHESTER TWP WATER - WESTERN	0.67	0.54	0.40	0.26	0.12	-0.02	0.35	0.26	0.17	0.08	-0.01
NJ1518005	MANCHESTER TWP WATER UTILITY - EASTERN	0.70	0.50	0.31	0.11	-0.08	-0.28	0.21	0.13	0.05	-0.03	-0.12
NJ1518010	MANCHESTER VILLAGE	0.09	0.08	0.08	0.08	0.08	0.08	5.88	5.75	5.61	5.48	5.34
NJ1518011	MANCHESTER TWP WATER UTILITY LACEY ROAD	0.17	0.17	0.16	0.16	0.15	0.15	2.92	2.85	2.78	2.70	2.63
NJ1518345	ARISTACARE AT MANCHESTER	0.00	0.00	-0.01	-0.01	-0.02	-0.02	0.00	0.00	0.00	0.00	0.00
NJ1520001	OCEAN TWP DEPT OF UTILITIES	0.41	0.36	0.31	0.26	0.21	0.15	0.36	0.31	0.26	0.20	0.15
NJ1521001	OCEAN GATE WATER DEPT	0.04	0.03	0.03	0.03	0.02	0.02	0.14	0.12	0.11	0.09	0.08
NJ1522001	PINE BEACH WATER DEPT	0.01	0.01	0.00	0.00	-0.01	-0.01	0.02	0.00	-0.01	-0.02	-0.03
NJ1523001	COLLIER MILLS MOBILE EST	0.00	-0.01	-0.02	-0.03	-0.04	-0.05	0.00	0.00	0.00	0.00	0.00
NJ1523002	DEEP RUN ADULT VILLAGE	0.01	-0.03	-0.07	-0.11	-0.15	-0.19	-0.35	-0.77	-1.19	-1.61	-2.03
NJ1523003	NJ AMERICAN WATER - NEW EGYPT	0.01	-0.12	-0.24	-0.37	-0.49	-0.61	-0.74	-1.54	-2.33	-3.12	-3.91
NJ1523004	OAK GROVE MHP	0.00	-0.01	-0.02	-0.03	-0.04	-0.05	0.00	0.00	0.00	0.00	0.00
NJ1524001	POINT PLEASANT WATER DEPARTMENT	0.94	0.87	0.81	0.74	0.68	0.61	0.33	0.30	0.28	0.25	0.23
NJ1525001	POINT PLEASANT BEACH WATER DEPARTMENT	0.44	0.42	0.41	0.39	0.37	0.35	0.34	0.32	0.31	0.29	0.28

Table D4. Deficit/surplus and the normalized future water availability for each water purveyor

PWSID	PWSID NAME	2015 Deficit/ Surplus	Future Water Availability (mgd)					Normalized Water Availability (-)				
			2015-2020	2015-2025	2015-2030	2015-2035	2015-2040	2015-2020	2015-2025	2015-2030	2015-2035	2015-2040
NJ1526001	SEASIDE HEIGHTS WATER DE	0.08	0.08	0.07	0.07	0.06	0.06	0.05	0.05	0.05	0.04	0.04
NJ1527001	SEASIDE PARK WATER DEPT	0.24	0.24	0.23	0.23	0.23	0.23	0.50	0.50	0.50	0.49	0.49
NJ1528001	SHIP BOTTOM WATER DEPART	-0.09	-0.10	-0.10	-0.10	-0.11	-0.11	-0.10	-0.11	-0.11	-0.12	-0.12
NJ1530003	STAFFORD TWP MUA CEDAR B	N/A	N/A	N/A	N/A	N/A	N/A	N/A	N/A	N/A	N/A	N/A
NJ1530004	STAFFORD TWP WATER - BEACH HAVEN WEST	1.29	1.09	0.89	0.70	0.50	0.30	0.56	0.46	0.36	0.26	0.16
NJ1530005	STAFFORD TWP MUA FAWN LA	0.14	0.12	0.11	0.10	0.09	0.08	0.99	0.90	0.81	0.72	0.62
NJ1530007	CEDAR RUN SENIOR CIT APT	0.05	0.05	0.05	0.05	0.05	0.05	1.04	1.03	1.02	1.01	1.00
NJ1531001	SURF CITY WATER DEPT	0.36	0.36	0.36	0.36	0.35	0.35	0.72	0.72	0.71	0.71	0.70
NJ1532002	TUCKERTON WATER & SEWER DEPT	0.11	0.08	0.05	0.03	0.00	-0.03	0.23	0.15	0.07	-0.01	-0.09
NJ1533001	BARNEGAT TWP WATER & SEWER UTILITIES	0.45	0.28	0.11	-0.06	-0.23	-0.40	0.14	0.06	-0.03	-0.12	-0.21
NJ1533002	PINEWOOD ESTATES-BRIGHTN	0.04	0.03	0.01	0.00	-0.01	-0.03	0.26	0.13	0.00	-0.13	-0.26
NJ1601001	BLOOMINGDALE WATER DEPT	0.17	0.13	0.09	0.05	0.01	-0.03	0.19	0.13	0.08	0.02	-0.04
NJ1603001	MANCHESTER UTILITIES AUTHORITY	1.32	1.26	1.20	1.14	1.07	1.01	0.76	0.72	0.69	0.65	0.61
NJ1604001	HAWTHORNE WATER DEPARTMENT	1.46	1.38	1.30	1.23	1.15	1.08	0.58	0.54	0.51	0.48	0.45

Table D4. Deficit/surplus and the normalized future water availability for each water purveyor

PWSID	PWSID NAME	2015 Deficit/ Surplus	Future Water Availability (mgd)					Normalized Water Availability (-)				
			2015-2020	2015-2025	2015-2030	2015-2035	2015-2040	2015-2020	2015-2025	2015-2030	2015-2035	2015-2040
NJ1605001	NJ AMERICAN WATER - LITTLE FALLS	0.21	0.16	0.11	0.05	0.00	-0.05	0.07	0.05	0.02	0.00	-0.02
NJ1605002	PASSAIC VALLEY WATER COMMISSION	-2.19	-3.47	-4.76	-6.04	-7.33	-8.61	-0.03	-0.04	-0.05	-0.06	-0.07
NJ1606301	HOLLAND CHRISTIAN HOME	0.06	0.05	0.05	0.05	0.05	0.05	1.22	1.18	1.14	1.10	1.07
NJ1609001	POMPTON LAKES MUA	0.28	0.24	0.21	0.18	0.15	0.12	0.24	0.21	0.18	0.15	0.12
NJ1611002	RINGWOOD WATER DEPARTMENT	0.14	0.09	0.05	0.00	-0.04	-0.09	0.12	0.06	0.00	-0.05	-0.11
NJ1612001	TOTOWA W DEPT	0.21	0.15	0.10	0.05	0.00	-0.05	0.08	0.05	0.03	0.00	-0.03
NJ1612301	LITTLE SISTERS OF THE POOR	N/A	N/A	N/A	N/A	N/A	N/A	N/A	N/A	N/A	N/A	N/A
NJ1613002	WANAQUE WATER DEPARTMENT	0.93	0.89	0.85	0.80	0.76	0.72	0.69	0.66	0.62	0.59	0.56
NJ1614001	WAYNE TOWNSHIP DIVISION OF WATER	0.59	0.36	0.12	-0.12	-0.35	-0.59	0.03	0.01	-0.01	-0.03	-0.05
NJ1615001	WEST MILFORD TWP MUA - BIRCH HILL PARK	-0.01	-0.01	-0.01	-0.02	-0.02	-0.02	-0.36	-0.45	-0.54	-0.63	-0.73
NJ1615002	WEST MILFORD TWP MUA GREENBROOK ESTATES	-0.04	-0.05	-0.06	-0.07	-0.08	-0.09	-0.59	-0.69	-0.80	-0.91	-1.01
NJ1615003	PASSAIC VALLEY W C HIGH CREST	N/A	N/A	N/A	N/A	N/A	N/A	N/A	N/A	N/A	N/A	N/A
NJ1615006	WEST MILFORD TWP MUA PARKWAY	0.00	0.00	0.00	-0.01	-0.01	-0.01	-0.31	-0.61	-0.92	-1.22	-1.53
NJ1615008	PVWC-POSTBROOK	0.01	0.00	0.00	-0.01	-0.02	-0.03	0.07	-0.12	-0.31	-0.50	-0.70

Table D4. Deficit/surplus and the normalized future water availability for each water purveyor

PWSID	PWSID NAME	2015 Deficit/ Surplus	Future Water Availability (mgd)					Normalized Water Availability (-)				
			2015-2020	2015-2025	2015-2030	2015-2035	2015-2040	2015-2020	2015-2025	2015-2030	2015-2035	2015-2040
NJ1615009	REFLECTION LAKES GARDEN APARTMENTS	N/A	N/A	N/A	N/A	N/A	N/A	N/A	N/A	N/A	N/A	N/A
NJ1615012	WEST MILFORD TWP MUA AWOSTING	-0.01	-0.02	-0.03	-0.04	-0.05	-0.06	-0.35	-0.54	-0.73	-0.92	-1.11
NJ1615014	WEST MILFORD TWP MUA CRESCENT PARK	-0.05	-0.06	-0.07	-0.08	-0.09	-0.10	-0.64	-0.77	-0.91	-1.04	-1.17
NJ1615016	WEST MILFORD TWP MUA OLDE MILFORD ESTATES	-0.05	-0.08	-0.11	-0.13	-0.16	-0.18	-0.30	-0.40	-0.50	-0.60	-0.70
NJ1615017	WONDER LAKE PROPERTIES I	N/A	N/A	N/A	N/A	N/A	N/A	N/A	N/A	N/A	N/A	N/A
NJ1615018	WEST MILFORD TWP BALD EAGLE VILLAGE	-0.05	-0.07	-0.09	-0.11	-0.13	-0.15	-0.60	-0.77	-0.95	-1.12	-1.30
NJ1615020	SUEZ WATER NEW JERSEY WEST MILFORD	0.03	0.00	-0.02	-0.05	-0.07	-0.09	0.02	-0.39	-0.80	-1.21	-1.62
NJ1615022	WOODLAND HEIGHTS HOMEOWNER ASSOC	N/A	N/A	N/A	N/A	N/A	N/A	N/A	N/A	N/A	N/A	N/A
NJ1615340	MILFORD MANOR	N/A	N/A	N/A	N/A	N/A	N/A	N/A	N/A	N/A	N/A	N/A
NJ1616001	WOODLAND PARK WATER DEPARTMENT	0.13	0.11	0.08	0.06	0.03	0.01	0.10	0.08	0.06	0.03	0.01
NJ1702001	ELMER BORO W DEPT	0.08	0.08	0.08	0.08	0.09	0.09	0.55	0.55	0.55	0.64	0.64
NJ1704001	LEISURE ARMS COMPLEX	0.09	0.09	0.09	0.09	0.09	0.09	16.42	16.42	16.42	16.42	16.42
NJ1706001	AUBURN VILLAGE WATER SUP	0.07	0.07	0.07	0.07	0.07	0.07	2.35	2.35	2.35	2.43	2.43

Table D4. Deficit/surplus and the normalized future water availability for each water purveyor

PWSID	PWSID NAME	2015 Deficit/ Surplus	Future Water Availability (mgd)					Normalized Water Availability (-)				
			2015-2020	2015-2025	2015-2030	2015-2035	2015-2040	2015-2020	2015-2025	2015-2030	2015-2035	2015-2040
NJ1707001	NJ AMERICAN WATER - PENNS GROVE	0.80	0.79	0.78	0.79	0.81	0.85	0.56	0.55	0.56	0.58	0.60
NJ1708001	PENNSVILLE TWSP. WATER DEPARTMENT	0.40	0.39	0.39	0.40	0.42	0.45	0.30	0.30	0.31	0.32	0.35
NJ1710001	HARDING WOODS MHP	0.03	0.03	0.03	0.03	0.04	0.05	0.38	0.38	0.38	0.48	0.69
NJ1710002	HOLLY TREE ACRES SYSTEM 1	0.08	0.08	0.08	0.08	0.08	0.09	4.34	4.34	4.34	4.43	4.62
NJ1710003	PICNIC GROVE MHC, LLC	-0.07	-0.07	-0.07	-0.07	-0.07	-0.06	-0.41	-0.41	-0.41	-0.40	-0.38
NJ1710006	VILLAGE I	N/A	N/A	N/A	N/A	N/A	N/A	N/A	N/A	N/A	N/A	N/A
NJ1710304	EAGLEVIEW HEALTH AND REHABILITATION	N/A	N/A	N/A	N/A	N/A	N/A	N/A	N/A	N/A	N/A	N/A
NJ1712001	SALEM WATER DEPARTMENT	1.45	1.45	1.45	1.45	1.46	1.49	0.94	0.94	0.94	0.94	0.96
NJ1713001	HANDYS MOBILE PARK	N/A	N/A	N/A	N/A	N/A	N/A	N/A	N/A	N/A	N/A	N/A
NJ1714001	COUNTRY CLUB ESTATES	N/A	N/A	N/A	N/A	N/A	N/A	N/A	N/A	N/A	N/A	N/A
NJ1714003	BANCROFT NEURO HEALTH CENTER	0.09	0.09	0.09	0.09	0.09	0.09	6.83	6.83	6.83	7.14	7.14
NJ1715001	WOODSTOWN WATER DEPARTMENT	0.10	0.10	0.10	0.10	0.12	0.13	0.26	0.26	0.26	0.32	0.35
NJ1803002	NJ AMERICAN WATER - TWIN LAKES	0.06	0.06	0.06	0.06	0.06	0.06	1.73	1.73	1.72	1.71	1.70
NJ1808001	FRANKLIN TOWNSHIP DEPT OF PUBLIC WORKS	3.48	3.30	3.12	2.93	2.75	2.56	0.34	0.32	0.30	0.28	0.26

Table D4. Deficit/surplus and the normalized future water availability for each water purveyor

PWSID	PWSID NAME	2015 Deficit/ Surplus	Future Water Availability (mgd)					Normalized Water Availability (-)				
			2015-2020	2015-2025	2015-2030	2015-2035	2015-2040	2015-2020	2015-2025	2015-2030	2015-2035	2015-2040
NJ1815300	MATHENY MEDICAL AND EDUCATION CENTER	N/A	N/A	N/A	N/A	N/A	N/A	N/A	N/A	N/A	N/A	N/A
NJ1817001	ROCKY HILL W DEPT	0.01	0.01	0.00	0.00	0.00	-0.01	0.06	0.03	0.00	-0.03	-0.06
NJ1901001	ANDOVER BORO WATER DEPT	0.02	0.02	0.02	0.02	0.01	0.01	0.25	0.22	0.19	0.15	0.12
NJ1902003	LAKE LENAPE WATER CO	0.02	-0.01	-0.04	-0.07	-0.10	-0.13	-0.13	-0.44	-0.75	-1.06	-1.37
NJ1902004	ANDOVER WATER CORP	N/A	N/A	N/A	N/A	N/A	N/A	N/A	N/A	N/A	N/A	N/A
NJ1902005	ASCOT PARK APTS	N/A	N/A	N/A	N/A	N/A	N/A	N/A	N/A	N/A	N/A	N/A
NJ1902007	ROLLING HILLS CONDOMINIUM ASSOCIATION	0.02	0.01	0.01	0.00	0.00	-0.01	0.18	0.10	0.03	-0.04	-0.11
NJ1902008	ANDOVER NURSING HOME	N/A	N/A	N/A	N/A	N/A	N/A	N/A	N/A	N/A	N/A	N/A
NJ1902009	ANDOVER INTERMEDIATE CARE CNTR	0.08	0.08	0.07	0.07	0.07	0.07	3.37	3.26	3.15	3.04	2.93
NJ1902346	WILLOW GLEN ACADEMY/ABBAY	N/A	N/A	N/A	N/A	N/A	N/A	N/A	N/A	N/A	N/A	N/A
NJ1903001	BRANCHVILLE W DEPT	0.07	0.01	-0.05	-0.11	-0.17	-0.23	0.10	-0.52	-1.15	-1.78	-2.41
NJ1904001	BROOKWOOD MUSCONETCONG RIVER POA	0.05	0.04	0.02	0.01	0.00	-0.02	0.41	0.26	0.12	-0.03	-0.17
NJ1904002	EAST BROOKWOOD ESTATES POA	0.00	0.00	-0.01	-0.02	-0.02	-0.03	-0.09	-0.24	-0.38	-0.53	-0.67
NJ1904003	FOREST LAKES WATER COMPANY	0.03	0.01	0.00	-0.02	-0.04	-0.06	0.09	-0.02	-0.13	-0.24	-0.35

Table D4. Deficit/surplus and the normalized future water availability for each water purveyor

PWSID	PWSID NAME	2015 Deficit/ Surplus	Future Water Availability (mgd)					Normalized Water Availability (-)				
			2015-2020	2015-2025	2015-2030	2015-2035	2015-2040	2015-2020	2015-2025	2015-2030	2015-2035	2015-2040
NJ1904004	NORTH SHORE WATER ASSOCIATION	N/A	N/A	N/A	N/A	N/A	N/A	N/A	N/A	N/A	N/A	N/A
NJ1904006	STRAWBERRY POINT PROP OW	N/A	N/A	N/A	N/A	N/A	N/A	N/A	N/A	N/A	N/A	N/A
NJ1904007	COLBY WATER CO	N/A	N/A	N/A	N/A	N/A	N/A	N/A	N/A	N/A	N/A	N/A
NJ1904009	AQUA NJ - BYRAM	-0.03	-0.04	-0.04	-0.05	-0.05	-0.06	-0.38	-0.42	-0.47	-0.51	-0.56
NJ1905002	CULVER LAKE WATER COMPANY	N/A	N/A	N/A	N/A	N/A	N/A	N/A	N/A	N/A	N/A	N/A
NJ1905004	SUSSEX CNTY HLTH-THE HOMESTED	N/A	N/A	N/A	N/A	N/A	N/A	N/A	N/A	N/A	N/A	N/A
NJ1906001	HILLSIDE ESTATES AT FRANKLIN	0.07	0.07	0.06	0.06	0.06	0.06	2.04	1.99	1.93	1.88	1.82
NJ1906002	FRANKLIN BOARD OF PUBLIC WORKS	0.15	0.12	0.09	0.06	0.02	-0.01	0.31	0.23	0.15	0.06	-0.02
NJ1907001	GREEN HILLS EST PROP OWN	0.09	0.06	0.04	0.01	-0.02	-0.05	7.19	4.10	1.02	-2.07	-5.16
NJ1907002	AQUA NJ - BEAR BROOK	0.01	-0.01	-0.03	-0.05	-0.07	-0.09	-0.10	-0.33	-0.56	-0.79	-1.02
NJ1908001	AQUA NJ - TRANQUILITY SPRINGS	0.07	0.03	-0.02	-0.06	-0.10	-0.15	0.96	-0.55	-2.07	-3.58	-5.10
NJ1909001	HAMBURG BOARD OF PUBLIC WORKS	0.13	0.12	0.11	0.10	0.09	0.08	0.41	0.38	0.34	0.31	0.28
NJ1910002	CARRIAGE MOBILE HOMES INC	0.06	0.04	0.03	0.02	0.00	-0.01	2.30	1.56	0.81	0.06	-0.68
NJ1910003	SUEZ WATER NEW JERSEY HAMPTON	0.06	0.02	-0.02	-0.06	-0.09	-0.13	0.47	-0.44	-1.35	-2.27	-3.18
NJ1911001	AQUA NJ WALLKILL	0.00	-0.01	-0.03	-0.04	-0.05	-0.06	-0.18	-0.31	-0.44	-0.57	-0.70
NJ1911002	LAKE STOCKHOLM INC	N/A	N/A	N/A	N/A	N/A	N/A	N/A	N/A	N/A	N/A	N/A

Table D4. Deficit/surplus and the normalized future water availability for each water purveyor

PWSID	PWSID NAME	2015 Deficit/ Surplus	Future Water Availability (mgd)					Normalized Water Availability (-)				
			2015-2020	2015-2025	2015-2030	2015-2035	2015-2040	2015-2020	2015-2025	2015-2030	2015-2035	2015-2040
NJ1911003	LAKE TAMARACK W CO	0.00	-0.01	-0.02	-0.03	-0.04	-0.05	-0.17	-0.33	-0.49	-0.66	-0.82
NJ1911004	AQUA NJ - SUMMIT LAKE	N/A	N/A	N/A	N/A	N/A	N/A	N/A	N/A	N/A	N/A	N/A
NJ1911005	HARDYSTON TWP MUA	0.05	0.04	0.03	0.02	0.02	0.01	0.64	0.51	0.38	0.26	0.13
NJ1911006	HARDYSTON TWP MUA	0.32	0.30	0.28	0.25	0.23	0.21	1.60	1.49	1.38	1.27	1.16
NJ1912001	HOPATCONG WATER DEPT	0.12	0.07	0.03	-0.02	-0.07	-0.11	0.19	0.07	-0.05	-0.17	-0.29
NJ1912300	LOCOR LAKEFRONT LODGING	N/A	N/A	N/A	N/A	N/A	N/A	N/A	N/A	N/A	N/A	N/A
NJ1914002	MONTAGUE WATER CO.	0.10	0.05	0.01	-0.04	-0.08	-0.13	0.43	0.05	-0.32	-0.69	-1.06
NJ1915001	NEWTON WATER & SEWER UTILITY	0.34	0.32	0.29	0.27	0.24	0.21	0.45	0.41	0.37	0.34	0.30
NJ1916001	OGDENSBURG W DEPT	0.07	0.06	0.05	0.04	0.03	0.02	0.29	0.24	0.20	0.16	0.11
NJ1918003	SPARTA TWP WATER UTILITY -- HIGHLANDS	0.06	0.05	0.04	0.03	0.02	0.01	0.36	0.30	0.23	0.17	0.10
NJ1918004	SPARTA TWP WATER UTILITY - LAKE MOHAWK	0.45	0.30	0.15	0.00	-0.15	-0.29	0.18	0.09	0.00	-0.09	-0.18
NJ1918013	SPARTA TWP WATER UTILITY - SUNSET	N/A	N/A	N/A	N/A	N/A	N/A	N/A	N/A	N/A	N/A	N/A
NJ1919001	STANHOPE W DEPT	0.22	0.21	0.20	0.19	0.18	0.17	0.43	0.41	0.38	0.36	0.34
NJ1920001	STILLWATER WATER DISTRICT 1	0.04	0.01	-0.01	-0.03	-0.05	-0.08	0.08	-0.06	-0.19	-0.33	-0.46
NJ1921001	SUSSEX WATER DEPT	0.30	0.29	0.28	0.27	0.27	0.26	0.82	0.80	0.78	0.76	0.73

Table D4. Deficit/surplus and the normalized future water availability for each water purveyor

PWSID	PWSID NAME	2015 Deficit/ Surplus	Future Water Availability (mgd)					Normalized Water Availability (-)					
			2015-2020	2015-2025	2015-2030	2015-2035	2015-2040	2015-2020	2015-2025	2015-2030	2015-2035	2015-2040	
NJ1922001	SUEZ WATER NEW JERSEY BARRY LAKES	N/A	N/A	N/A	N/A	N/A	N/A	N/A	N/A	N/A	N/A	N/A	N/A
NJ1922004	SUEZ WATER NEW JERSEY WOODRIDGE ESTATES	N/A	N/A	N/A	N/A	N/A	N/A	N/A	N/A	N/A	N/A	N/A	N/A
NJ1922005	SUEZ WATER NEW JERSEY GRANDVIEW ESTATES	N/A	N/A	N/A	N/A	N/A	N/A	N/A	N/A	N/A	N/A	N/A	N/A
NJ1922006	SUEZ WATER NEW JERSEY SUSSEX HILLS	N/A	N/A	N/A	N/A	N/A	N/A	N/A	N/A	N/A	N/A	N/A	N/A
NJ1922008	AQUA NJ - VERNON	0.03	0.02	0.01	0.00	-0.01	-0.01	0.25	0.14	0.03	-0.08	-0.19	
NJ1922010	VILLAGE OF LAKE GLENWOOD	N/A	N/A	N/A	N/A	N/A	N/A	N/A	N/A	N/A	N/A	N/A	N/A
NJ1922011	SUEZ WATER NEW JERSEY SUNSET RIDGE	N/A	N/A	N/A	N/A	N/A	N/A	N/A	N/A	N/A	N/A	N/A	N/A
NJ1922012	SUEZ WATER NEW JERSEY LAKE CONWAY	N/A	N/A	N/A	N/A	N/A	N/A	N/A	N/A	N/A	N/A	N/A	N/A
NJ1922013	SUEZ WATER NEW JERSEY DAVID CURTIS	N/A	N/A	N/A	N/A	N/A	N/A	N/A	N/A	N/A	N/A	N/A	N/A
NJ1922015	SUEZ WATER NEW JERSEY WALNUT HILLS	N/A	N/A	N/A	N/A	N/A	N/A	N/A	N/A	N/A	N/A	N/A	N/A
NJ1922017	SUEZ WATER NEW JERSEY HIGHLAND LAKES	N/A	N/A	N/A	N/A	N/A	N/A	N/A	N/A	N/A	N/A	N/A	N/A
NJ1922021	SUEZ WATER NEW JERSEY PREDMORE ESTATES	N/A	N/A	N/A	N/A	N/A	N/A	N/A	N/A	N/A	N/A	N/A	N/A

Table D4. Deficit/surplus and the normalized future water availability for each water purveyor

PWSID	PWSID NAME	2015 Deficit/ Surplus	Future Water Availability (mgd)					Normalized Water Availability (-)				
			2015-2020	2015-2025	2015-2030	2015-2035	2015-2040	2015-2020	2015-2025	2015-2030	2015-2035	2015-2040
NJ1922022	SUEZ WATER NEW JERSEY SAMMIS ROAD	N/A	N/A	N/A	N/A	N/A	N/A	N/A	N/A	N/A	N/A	N/A
NJ1922026	SUEZ WATER NEW JERSEY VERNON VALLEY	0.05	-0.02	-0.08	-0.15	-0.22	-0.29	-0.03	-0.15	-0.27	-0.39	-0.52
NJ1922027	HIDDEN VILLAGE CONDO ASSOCIATION	0.04	0.04	0.03	0.03	0.03	0.02	2.99	2.76	2.53	2.30	2.07
NJ1924002	SIMMONS W CO	N/A	N/A	N/A	N/A	N/A	N/A	N/A	N/A	N/A	N/A	N/A
NJ1924003	REGENCY APARTMENTS LLC	-0.05	-0.13	-0.20	-0.28	-0.35	-0.43	-0.84	-1.34	-1.84	-2.34	-2.84
NJ1924004	SUEZ WATER NEW JERSEY WOODBRIDGE ESTATES	N/A	N/A	N/A	N/A	N/A	N/A	N/A	N/A	N/A	N/A	N/A
NJ1924006	TOWN CENTER AT WANTAGE	N/A	N/A	N/A	N/A	N/A	N/A	N/A	N/A	N/A	N/A	N/A
NJ2004001	LIBERTY WATER CO C/O NJ AMERICAN WATER	9.57	9.09	8.62	8.14	7.67	7.19	0.61	0.58	0.55	0.51	0.48
NJ2004002	NJ AMERICAN WATER - RARITAN	37.52	34.56	31.48	28.41	25.45	22.53	0.25	0.23	0.21	0.18	0.16
NJ2013001	RAHWAY CITY WATER DEPT	-0.85	-0.96	-1.07	-1.19	-1.30	-1.41	-0.14	-0.16	-0.18	-0.19	-0.21
NJ2021001	WINFIELD MUTUAL HOUSING	0.30	0.30	0.30	0.30	0.30	0.30	1.87	1.87	1.87	1.87	1.87
NJ2101001	ALLAMUCHY TWP WATER & SEWER	0.08	0.07	0.06	0.04	0.03	0.02	0.19	0.15	0.12	0.08	0.05
NJ2102001	ALPHA MUNICIPAL WATER WORKS	0.17	0.15	0.14	0.12	0.10	0.09	0.75	0.67	0.59	0.51	0.43

Table D4. Deficit/surplus and the normalized future water availability for each water purveyor

PWSID	PWSID NAME	2015 Deficit/ Surplus	Future Water Availability (mgd)					Normalized Water Availability (-)				
			2015-2020	2015-2025	2015-2030	2015-2035	2015-2040	2015-2020	2015-2025	2015-2030	2015-2035	2015-2040
NJ2103001	NJ AMERICAN WATER - BELVIDERE	0.22	0.18	0.14	0.10	0.07	0.03	0.58	0.46	0.33	0.21	0.09
NJ2103002	BELVIDERE SQUARE APT COMPLEX	N/A	N/A	N/A	N/A	N/A	N/A	N/A	N/A	N/A	N/A	N/A
NJ2104001	BLAIRSTOWN WATER DEPARTM	-0.03	-0.06	-0.08	-0.11	-0.13	-0.16	-0.42	-0.62	-0.81	-1.01	-1.20
NJ2106304	FOREST MANOR RETIREMENT HOME	N/A	N/A	N/A	N/A	N/A	N/A	N/A	N/A	N/A	N/A	N/A
NJ2108001	HACKETTSTOWN MUA	0.58	0.51	0.43	0.35	0.28	0.20	0.20	0.17	0.14	0.11	0.08
NJ2110001	AQUA NJ - BRAINARDS	N/A	N/A	N/A	N/A	N/A	N/A	N/A	N/A	N/A	N/A	N/A
NJ2110003	AQUA NJ - HARKERS HOLLOW	N/A	N/A	N/A	N/A	N/A	N/A	N/A	N/A	N/A	N/A	N/A
NJ2112001	INDEPENDENCE MUA VALLEY VIEW	N/A	N/A	N/A	N/A	N/A	N/A	N/A	N/A	N/A	N/A	N/A
NJ2112002	INDEPENDENCE MUA HIGHLND	0.02	0.02	0.02	0.02	0.02	0.01	0.61	0.56	0.52	0.48	0.43
NJ2113002	RIVERSIDE MOBILE HOME PA	N/A	N/A	N/A	N/A	N/A	N/A	N/A	N/A	N/A	N/A	N/A
NJ2113003	TRIPLE BROOK MOBILE HOME	N/A	N/A	N/A	N/A	N/A	N/A	N/A	N/A	N/A	N/A	N/A
NJ2113301	CLOVER REST HOME	N/A	N/A	N/A	N/A	N/A	N/A	N/A	N/A	N/A	N/A	N/A
NJ2116002	HILLSIDE VILLAGE	N/A	N/A	N/A	N/A	N/A	N/A	N/A	N/A	N/A	N/A	N/A
NJ2116003	NJ AMERICAN WATER - MANSFIELD	0.08	0.08	0.08	0.08	0.08	0.08	4.86	4.80	4.74	4.67	4.61
NJ2116004	WARREN HAVEN NURSING H	0.01	0.01	0.01	0.01	0.00	0.00	0.31	0.25	0.19	0.14	0.08
NJ2116328	CAMP HOPE	N/A	N/A	N/A	N/A	N/A	N/A	N/A	N/A	N/A	N/A	N/A

Table D4. Deficit/surplus and the normalized future water availability for each water purveyor

PWSID	PWSID NAME	2015 Deficit/ Surplus	Future Water Availability (mgd)					Normalized Water Availability (-)				
			2015-2020	2015-2025	2015-2030	2015-2035	2015-2040	2015-2020	2015-2025	2015-2030	2015-2035	2015-2040
NJ2117002	VALLEY VIEW ESTATES	N/A	N/A	N/A	N/A	N/A	N/A	N/A	N/A	N/A	N/A	N/A
NJ2117003	OXFORD MANOR LLC	N/A	N/A	N/A	N/A	N/A	N/A	N/A	N/A	N/A	N/A	N/A
NJ2119001	AQUA NJ INC - PHILLIPSBURG	1.10	1.03	0.95	0.87	0.80	0.72	0.29	0.27	0.25	0.23	0.21
NJ2120001	AQUA NJ INC - RIEGELSVILLE	N/A	N/A	N/A	N/A	N/A	N/A	N/A	N/A	N/A	N/A	N/A
NJ2120002	AQUA NJ - WARREN GLEN	0.09	0.08	0.08	0.08	0.07	0.07	6.67	6.32	5.97	5.62	5.27
NJ2121001	NJ AMERICAN WATER - WASHINGTON/OXFORD	0.20	0.18	0.15	0.12	0.10	0.07	0.11	0.10	0.08	0.06	0.04
NJ2123002	WINDTRYST APTS	0.02	0.02	0.01	0.01	0.01	0.00	0.53	0.42	0.31	0.21	0.10
NJ2123003	COUNTRY VIEW VILLAGE, LLC	0.07	0.07	0.06	0.06	0.05	0.05	2.50	2.33	2.16	1.98	1.81
NJ1025308	PATTENBURG HOUSE	N/A	N/A	N/A	N/A	N/A	N/A	N/A	N/A	N/A	N/A	N/A
NJ1710007	HOLLY TREE ACRES SYSTEM 2	N/A	N/A	N/A	N/A	N/A	N/A	N/A	N/A	N/A	N/A	N/A
NJ1436006	ROXBURY TWP WD - EVERGREEN	N/A	N/A	N/A	N/A	N/A	N/A	N/A	N/A	N/A	N/A	N/A
NJ1427003	MT. OLIVE TWP - INDIAN SPRINGS	N/A	N/A	N/A	N/A	N/A	N/A	N/A	N/A	N/A	N/A	N/A
NJ1714300	MATER DEI NURSING HOME	N/A	N/A	N/A	N/A	N/A	N/A	N/A	N/A	N/A	N/A	N/A
NJ1208001	NJ AMERICAN - JAMESBURG	N/A	N/A	N/A	N/A	N/A	N/A	N/A	N/A	N/A	N/A	N/A

Table D5. Public water systems and the municipalities they serve.

COUNTY	MUNICIPALITY	PWSID
Atlantic	Absecon City	119002
	Atlantic City	102001
	Brigantine City	103001
	Buena Boro	104003
	Buena Vista Twp	104003
	Buena Vista Twp	105001
	Buena Vista Twp	105002
	Egg Harbor City	107001
	Egg Harbor Twp	108002
	Egg Harbor Twp	108003
	Egg Harbor Twp	108004
	Egg Harbor Twp	108005
	Egg Harbor Twp	108006
	Egg Harbor Twp	108009
	Egg Harbor Twp	108013
	Egg Harbor Twp	108014
	Egg Harbor Twp	108019
	Egg Harbor Twp	108023
	Egg Harbor Twp	108303
	Egg Harbor Twp	112002
	Egg Harbor Twp	119001
	Egg Harbor Twp	119002
	Galloway Twp	107001
	Galloway Twp	111004
	Galloway Twp	111006

Table D5. Public water systems and the municipalities they serve.

COUNTY	MUNICIPALITY	PWSID	
	Galloway Twp	111007	
	Galloway Twp	119002	
	Hamilton Twp	112001	
	Hammonton Town	113001	
	Linwood City	119002	
	Longport Boro	115001	
	Margate City	116001	
	Mullica Twp	117001	
	Northfield City	119002	
	Pleasantville City	119002	
	Somers Point City	119002	
	Ventnor City	122001	
	Weymouth Twp	112001	
	Weymouth Twp	123001	
	Weymouth Twp	123002	
	Bergen	Allendale Boro	201001
		Allendale Boro	248001
		Allendale Boro	264001
		Alpine Boro	238001
		Bergenfield Boro	238001
Bogota Boro		238001	
Carlstadt Boro		238001	
Cliffside Park Boro		238001	
Closter Boro	238001		
Cresskill Boro	238001		

Table D5. Public water systems and the municipalities they serve.

COUNTY	MUNICIPALITY	PWSID
	Demarest Boro	238001
	Dumont Boro	238001
	East Rutherford Boro	238001
	Edgewater Boro	238001
	Elmwood Park Boro	211001
	Emerson Boro	238001
	Englewood City	238001
	Englewood Cliffs Boro	238001
	Fair Lawn Boro	217001
	Fair Lawn Boro	1604001
	Fairview Boro	238001
	Fort Lee Boro	238001
	Franklin Lakes Boro	220001
	Franklin Lakes Boro	1603001
	Garfield City	221001
	Garfield City	231001
	Glen Rock Boro	251001
	Glen Rock Boro	1604001
	Hackensack City	238001
	Harrington Park Boro	238001
	Hasbrouck Heights Boro	231001

Table D5. Public water systems and the municipalities they serve.

COUNTY	MUNICIPALITY	PWSID
	Hasbrouck Heights Boro	238001
	Haworth Boro	238001
	Hillsdale Boro	238001
	Hillsdale Boro	247001
	Ho-Ho-Kus Boro	228001
	Leonia Boro	238001
	Little Ferry Boro	238001
	Lodi Boro	231001
	Lodi Boro	238001
	Lyndhurst Twp	232001
	Lyndhurst Twp	239001
	Lyndhurst Twp	906001
	Mahwah Twp	201001
	Mahwah Twp	233001
	Mahwah Twp	233005
	Mahwah Twp	248001
	Maywood Boro	238001
	Midland Park Boro	251001
	Montvale Boro	236001
	Montvale Boro	238001
	Montvale Boro	247001
	Moonachie Boro	238001
	New Milford Boro	238001
	North Arlington Boro	239001

Table D5. Public water systems and the municipalities they serve.

COUNTY	MUNICIPALITY	PWSID
	Northvale Boro	238001
	Norwood Boro	238001
	Oakland Boro	242001
	Old Tappan Boro	238001
	Oradell Boro	238001
	Palisades Park Boro	238001
	Paramus Boro	238001
	Park Ridge Boro	247001
	Ramsey Boro	201001
	Ramsey Boro	233001
	Ramsey Boro	248001
	Ridgefield Boro	238001
	Ridgefield Park Village	238001
	Ridgewood Village	228001
	Ridgewood Village	251001
	Ridgewood Village	1604001
	River Edge Boro	238001
	River Vale Twp	238001
	Rochelle Park Twp	231001
	Rochelle Park Twp	238001
	Rockleigh Boro	238001
	Rutherford Boro	238001
	Saddle Brook Twp	221001
	Saddle Brook Twp	257001

Table D5. Public water systems and the municipalities they serve.

COUNTY	MUNICIPALITY	PWSID
	Saddle River Boro	228001
	Saddle River Boro	247001
	Saddle River Boro	258001
	Saddle River Boro	264001
	South Hackensack Twp	238001
	Teaneck Twp	238001
	Tenafly Boro	238001
	Teterboro Boro	238001
	Upper Saddle River Boro	238001
	Upper Saddle River Boro	248001
	Waldwick Boro	264001
	Wallington Boro	238001
	Wallington Boro	265001
	Washington Twp	238001
	Westwood Boro	238001
	Woodcliff Lake Boro	238001
	Woodcliff Lake Boro	247001
	Wood-Ridge Boro	238001
	Wyckoff Twp	251001
	Wyckoff Twp	264001
	Wyckoff Twp	1604001
Burlington	Bass River Twp	301001

Table D5. Public water systems and the municipalities they serve.

COUNTY	MUNICIPALITY	PWSID
	Beverly City	327001
	Bordentown City	303001
	Bordentown Twp	303001
	Burlington City	305001
	Burlington Twp	306001
	Burlington Twp	327001
	Chesterfield Twp	307002
	Chesterfield Twp	1103001
	Cinnaminson Twp	327001
	Delanco Twp	327001
	Delran Twp	327001
	Eastampton Twp	311001
	Eastampton Twp	311002
	Eastampton Twp	323001
	Edgewater Park Twp	327001
	Evesham Twp	313001
	Fieldsboro Boro	303001
	Fieldsboro Boro	314001
	Florence Twp	315001
	Hainesport Twp	323001
	Lumberton Twp	323001
	Mansfield Twp	318002
	Mansfield Twp	323001
	Maple Shade Twp	319001
	Maple Shade Twp	327001

Table D5. Public water systems and the municipalities they serve.

COUNTY	MUNICIPALITY	PWSID
	Medford Twp	320001
	Medford Twp	320002
	Moorestown Twp	322001
	Moorestown Twp	327001
	Mount Holly Twp	323001
	Mount Laurel Twp	324001
	Mount Laurel Twp	327001
	Mount Laurel Twp	338001
	New Hanover Twp	325001
	North Hanover Twp	326001
	North Hanover Twp	326003
	North Hanover Twp	326004
	North Hanover Twp	326005
	North Hanover Twp	326006
	North Hanover Twp	326007
	North Hanover Twp	326008
	North Hanover Twp	326009
	North Hanover Twp	326012

Table D5. Public water systems and the municipalities they serve.

COUNTY	MUNICIPALITY	PWSID
	North Hanover Twp	326013
	North Hanover Twp	326014
	Palmyra Boro	327001
	Pemberton Boro	328001
	Pemberton Twp	328001
	Pemberton Twp	329001
	Pemberton Twp	329002
	Pemberton Twp	329003
	Pemberton Twp	329004
	Pemberton Twp	329005
	Pemberton Twp	329006
	Pemberton Twp	329008
	Pemberton Twp	329009
	Riverside Twp	327001
	Riverton Boro	327001
	Shamong Twp	332001
	Shamong Twp	332002
	Southampton Twp	333001
	Southampton Twp	333002
	Southampton Twp	333003
	Southampton Twp	333004
	Tabernacle Twp	335001
	Westampton Twp	323001
	Westampton Twp	338001

Table D5. Public water systems and the municipalities they serve.

COUNTY	MUNICIPALITY	PWSID
	Willingboro Twp	338001
	Woodland Twp	339001
	Wrightstown Boro	340001
	Wrightstown Boro	340002
Camden	Audubon Boro	327001
	Audubon Park Boro	327001
	Barrington Boro	327001
	Bellmawr Boro	327001
	Bellmawr Boro	404001
	Berlin Boro	405001
	Berlin Twp	405001
	Berlin Twp	411001
	Brooklawn Boro	407001
	Camden City	327001
	Camden City	408001
	Camden City	424001
	Cherry Hill Twp	327001
	Cherry Hill Twp	424001
	Chesilhurst Boro	410001
	Chesilhurst Boro	410002
	Clementon Boro	327001
	Clementon Boro	411001
	Collingswood Boro	412001
	Collingswood Boro	416001
	Gibbsboro Boro	327001

Table D5. Public water systems and the municipalities they serve.

COUNTY	MUNICIPALITY	PWSID
	Gloucester City	414001
	Gloucester Twp	327001
	Gloucester Twp	415002
	Haddon Heights Boro	327001
	Haddon Twp	327001
	Haddon Twp	412001
	Haddon Twp	416001
	Haddonfield Boro	327001
	Haddonfield Boro	416001
	Hi-Nella Boro	327001
	Laurel Springs Boro	327001
	Lawnside Boro	327001
	Lindenwold Boro	327001
	Lindenwold Boro	411001
	Magnolia Boro	327001
	Merchantville Boro	424001
	Mount Ephraim Boro	327001
	Oaklyn Boro	327001
	Pennsauken Twp	327001
	Pennsauken Twp	424001
	Pine Hill Boro	411001
	Pine Hill Boro	428002
	Pine Valley Boro	429001

Table D5. Public water systems and the municipalities they serve.

COUNTY	MUNICIPALITY	PWSID
	Runnemede Boro	327001
	Somerdale Boro	327001
	Stratford Boro	327001
	Voorhees Twp	327001
	Voorhees Twp	405001
	Waterford Twp	405001
	Waterford Twp	435003
	Waterford Twp	435324
	Winslow Twp	405001
	Winslow Twp	436001
	Winslow Twp	436002
	Winslow Twp	436007
	Winslow Twp	436008
	Winslow Twp	436009
	Winslow Twp	436010
	Woodlynne Boro	412001
Cape May	Avalon Boro	501001
	Cape May City	502001
	Cape May Point Boro	502001
	Cape May Point Boro	503001
	Dennis Twp	504306
	Lower Twp	502001
	Lower Twp	505002
	Lower Twp	505003

Table D5. Public water systems and the municipalities they serve.

COUNTY	MUNICIPALITY	PWSID
	Lower Twp	514001
	Middle Twp	506001
	Middle Twp	506004
	Middle Twp	506007
	Middle Twp	506008
	Middle Twp	506009
	Middle Twp	506010
	Middle Twp	506012
	Middle Twp	506013
	Middle Twp	506015
	Middle Twp	506321
	Middle Twp	514001
	North Wildwood City	514001
	Ocean City	508001
	Sea Isle City	509001
	Stone Harbor Boro	510001
	Upper Twp	511001
	Upper Twp	511003
	West Cape May Boro	502001
	West Cape May Boro	512001
	West Wildwood Boro	514001
	Wildwood City	514001

Table D5. Public water systems and the municipalities they serve.

COUNTY	MUNICIPALITY	PWSID
	Wildwood Crest Boro	514001
	Woodbine Boro	516001
	Woodbine Boro	516003
Cumberland	Bridgeton City	601001
	Downe Twp	604001
	Fairfield Twp	605001
	Fairfield Twp	605002
	Fairfield Twp	605004
	Hopewell Twp	607001
	Maurice River Twp	609001
	Millville City	610001
	Millville City	610002
	Stow Creek Twp	612001
	Upper Deerfield Twp	613004
	Vineland City	610001
	Vineland City	614002
	Vineland City	614003
	Vineland City	614004
	Vineland City	614005
	Vineland City	813001
Essex	Belleville Twp	701001
	Bloomfield Twp	702001
	Caldwell Boro	703001
	Cedar Grove Twp	704001

Table D5. Public water systems and the municipalities they serve.

COUNTY	MUNICIPALITY	PWSID
	Cedar Grove Twp	720001
	Cedar Grove Twp	1605001
	East Orange City	705001
	Essex Fells Boro	706001
	Fairfield Twp	707001
	Glen Ridge Boro	708001
	Irvington Twp	712001
	Livingston Twp	710001
	Livingston Twp	712001
	Maplewood Twp	712001
	Millburn Twp	712001
	Montclair Twp	713001
	Newark City	714001
	North Caldwell Boro	712001
	North Caldwell Boro	715001
	North Caldwell Boro	715002
	North Caldwell Boro	721001
	North Caldwell Boro	1605001
	Nutley Twp	716001
	Orange City Twp	717001
	Roseland Boro	718001

Table D5. Public water systems and the municipalities they serve.

COUNTY	MUNICIPALITY	PWSID
	South Orange Village Twp	712001
	South Orange Village Twp	719001
	Verona Twp	706002
	Verona Twp	720001
	West Caldwell Twp	721001
	West Caldwell Twp	906001
	West Orange Twp	712001
	West Orange Twp	720001
Gloucester	Clayton Boro	801001
	Deptford Twp	802001
	Deptford Twp	822001
	East Greenwich Twp	803001
	East Greenwich Twp	807001
	Elk Twp	804001
	Elk Twp	804308
	Elk Twp	806001
	Franklin Twp	805001
	Franklin Twp	805002
	Franklin Twp	805003
	Franklin Twp	805433
	Franklin Twp	813001
	Glassboro Boro	806001
	Glassboro Boro	815001

Table D5. Public water systems and the municipalities they serve.

COUNTY	MUNICIPALITY	PWSID
	Greenwich Twp	807001
	Harrison Twp	808001
	Logan Twp	809001
	Logan Twp	809002
	Mantua Twp	810004
	Mantua Twp	810005
	Mantua Twp	815001
	Monroe Twp	811002
	National Park Boro	812001
	Newfield Boro	813001
	Paulsboro Boro	807001
	Paulsboro Boro	814001
	Pitman Boro	815001
	South Harrison Twp	816001
	Swedesboro Boro	817001
	Washington Twp	818004
	Wenonah Boro	819001
	Wenonah Boro	822001
	West Deptford Twp	812001
	West Deptford Twp	820001
	West Deptford Twp	822001
	Westville Boro	821001
	Woodbury City	822001

Table D5. Public water systems and the municipalities they serve.

COUNTY	MUNICIPALITY	PWSID
	Woodbury Heights Boro	822001
	Woodbury Heights Boro	823001
	Woolwich Twp	809002
	Woolwich Twp	817001
	Woolwich Twp	824001
Hudson	Bayonne City	901001
	East Newark Boro	902001
	East Newark Boro	904001
	Guttenberg Town	238001
	Harrison Town	904001
	Harrison Town	907001
	Hoboken City	905001
	Hoboken City	906001
	Jersey City	906001
	Kearny Town	904001
	Kearny Town	907001
	North Bergen Twp	238001
	Secaucus Town	238001
	Union City	238001
	Weehawken Twp	238001
	West New York Town	238001
Hunterdon	Alexandria Twp	1001301
	Alexandria Twp	1020001

Table D5. Public water systems and the municipalities they serve.

COUNTY	MUNICIPALITY	PWSID
	Bloomsbury Boro	2119001
	Califon Boro	1004001
	Clinton Town	1005001
	Clinton Twp	1005001
	Clinton Twp	1006300
	Clinton Twp	1006302
	Clinton Twp	1014001
	Delaware Twp	1007001
	Delaware Twp	1007002
	Flemington Boro	1009001
	Franklin Twp	1005001
	Frenchtown Boro	712001
	Frenchtown Boro	1011001
	Glen Gardner Boro	1012001
	Hampton Boro	1013001
	High Bridge Boro	1014001
	Holland Twp	1015003
	Holland Twp	1015004
	Holland Twp	1020001
	Holland Twp	2120002
	Lambertville City	1017001
	Lebanon Boro	1005001
	Lebanon Twp	1019001
	Lebanon Twp	1019002
	Lebanon Twp	1019003

Table D5. Public water systems and the municipalities they serve.

COUNTY	MUNICIPALITY	PWSID
	Lebanon Twp	1019301
	Lebanon Twp	1019311
	Milford Boro	1020001
	Raritan Twp	1009001
	Raritan Twp	1021363
	Raritan Twp	2004002
	Readington Twp	2004002
	Stockton Boro	1023001
	Tewksbury Twp	1024001
	Tewksbury Twp	1438003
	Tewksbury Twp	2004002
	Union Twp	1005001
	Union Twp	1025001
	Union Twp	1025313
	West Amwell Twp	1017001
Mercer	East Windsor Twp	1101002
	Ewing Twp	1111001
	Hamilton Twp	1103001
	Hamilton Twp	1111001
	Hightstown Boro	1104001
	Hopewell Boro	1105001
	Hopewell Twp	1105001
	Hopewell Twp	1106001
	Hopewell Twp	1106002
	Hopewell Twp	1111001

Table D5. Public water systems and the municipalities they serve.

COUNTY	MUNICIPALITY	PWSID
	Hopewell Twp	2004002
	Lawrence Twp	1107001
	Lawrence Twp	1107002
	Lawrence Twp	1111001
	Lawrence Twp	2004002
	Pennington Boro	1108001
	Princeton	2004002
	Robbinsville Twp	1103001
	Trenton City	1111001
	West Windsor Twp	2004002
Middlesex	Carteret Boro	1225001
	Cranbury Twp	2004002
	Dunellen Boro	2004002
	East Brunswick Twp	1204001
	East Brunswick Twp	1224001
	Edison Twp	1205001
	Edison Twp	1225001
	Edison Twp	2004002
	Helmetta Boro	1206001
	Highland Park Boro	1207001
	Jamesburg Boro	2004002
	Metuchen Boro	1225001
	Middlesex Boro	2004002

Table D5. Public water systems and the municipalities they serve.

COUNTY	MUNICIPALITY	PWSID
	Milltown Boro	1212001
	Monroe Twp	1213002
	Monroe Twp	1213321
	Monroe Twp	2004002
	New Brunswick City	1214001
	North Brunswick Twp	1215001
	Old Bridge Twp	1209002
	Old Bridge Twp	1329001
	Old Bridge Twp	1330002
	Perth Amboy City	1216001
	Piscataway Twp	2004002
	Plainsboro	2004002
	Sayreville Boro	1219001
	South Amboy City	1225001
	South Brunswick Twp	1221004
	South Brunswick Twp	2004002
	South Plainfield Boro	1225001
	South Plainfield Boro	2004002
	South River Boro	1223001
	Spotswood Boro	1224001
	Woodbridge Twp	1225001

Table D5. Public water systems and the municipalities they serve.

COUNTY	MUNICIPALITY	PWSID
Monmouth	Aberdeen Twp	1329001
	Aberdeen Twp	1330002
	Aberdeen Twp	1330003
	Aberdeen Twp	1330004
	Aberdeen Twp	1339001
	Aberdeen Twp	1345001
	Allenhurst Boro	1345001
	Allentown Boro	1302001
	Asbury Park City	1345001
	Atlantic Highlands Boro	1304001
	Avon-By-The-Sea Boro	1305001
	Belmar Boro	1306001
	Bradley Beach Boro	1345001
	Brielle Boro	1308001
	Colts Neck Twp	1309001
	Colts Neck Twp	1309002
	Colts Neck Twp	1309415
	Colts Neck Twp	1316001
	Colts Neck Twp	1345001
	Deal Boro	1345001
	Eatontown Boro	1345001
	Englishtown Boro	1312001
	Fair Haven Boro	1340001

Table D5. Public water systems and the municipalities they serve.

COUNTY	MUNICIPALITY	PWSID
	Fair Haven Boro	1345001
	Farmingdale Boro	1314001
	Freehold Boro	1315001
	Freehold Twp	1315001
	Freehold Twp	1316001
	Freehold Twp	1326004
	Hazlet Twp	1339001
	Highlands Boro	1345001
	Holmdel Twp	1339001
	Holmdel Twp	1345001
	Howell Twp	1319003
	Howell Twp	1319007
	Howell Twp	1319008
	Howell Twp	1319009
	Howell Twp	1319010
	Interlaken Boro	1345001
	Keansburg Boro	1321001
	Keyport Boro	1322001
	Keyport Boro	1339001
	Lake Como Boro	1347001
	Little Silver Boro	1340001
	Little Silver Boro	1345001
	Loch Arbour Village	1345001
	Long Branch City	1345001
	Manalapan Twp	1312001

Table D5. Public water systems and the municipalities they serve.

COUNTY	MUNICIPALITY	PWSID
	Manalapan Twp	1326001
	Manalapan Twp	1326002
	Manalapan Twp	1326004
	Manalapan Twp	1326005
	Manalapan Twp	1326007
	Manalapan Twp	1326321
	Manasquan Boro	1327001
	Marlboro Twp	1326001
	Marlboro Twp	1328002
	Marlboro Twp	1328003
	Marlboro Twp	1329001
	Matawan Boro	1329001
	Middletown Twp	1331001
	Middletown Twp	1345001
	Millstone Twp	1332314
	Monmouth Beach Boro	1345001
	Neptune City Boro	1345001
	Neptune Twp	1345001
	Ocean Twp	1345001
	Oceanport Boro	1345001
	Red Bank Boro	1340001
	Red Bank Boro	1345001
	Roosevelt Boro	1341001
	Rumson Boro	1345001
	Sea Bright Boro	1345001

Table D5. Public water systems and the municipalities they serve.

COUNTY	MUNICIPALITY	PWSID
	Sea Girt Boro	1344001
	Shrewsbury Boro	1345001
	Shrewsbury Twp	1345001
	Spring Lake Boro	1348001
	Spring Lake Heights Boro	1349001
	Tinton Falls Boro	1345001
	Union Beach Boro	1339001
	Union Beach Boro	1345001
	Union Beach Boro	1350001
	Upper Freehold Twp	1103001
	Upper Freehold Twp	1302001
	Wall Twp	1327001
	Wall Twp	1352003
	West Long Branch Boro	1345001
Morris	Boonton Town	1401001
	Boonton Twp	1401002
	Boonton Twp	1408001
	Boonton Twp	1425001
	Butler Boro	1403001
	Chatham Boro	1404001
	Chatham Boro	1424001
	Chester Boro	712001
	Chester Boro	1406002

Table D5. Public water systems and the municipalities they serve.

COUNTY	MUNICIPALITY	PWSID
	Chester Boro	1438003
	Chester Boro	2004002
	Chester Twp	712001
	Chester Twp	1407001
	Denville Twp	1408001
	Denville Twp	1425001
	Denville Twp	1434001
	Dover Town	1409001
	East Hanover Twp	1410001
	Florham Park Boro	712001
	Florham Park Boro	1411001
	Hanover Twp	1424001
	Harding Twp	712001
	Harding Twp	1413001
	Harding Twp	1424001
	Jefferson Twp	1414003
	Jefferson Twp	1414006
	Jefferson Twp	1414008
	Jefferson Twp	1414011
	Jefferson Twp	1414013
	Jefferson Twp	1414014
	Jefferson Twp	1414016
	Jefferson Twp	1918003
	Kinnelon Boro	1403001
	Kinnelon Boro	1415001

Table D5. Public water systems and the municipalities they serve.

COUNTY	MUNICIPALITY	PWSID
	Kinnelon Boro	1415002
	Lincoln Park Boro	1416001
	Lincoln Park Boro	1416004
	Lincoln Park Boro	1431001
	Lincoln Park Boro	1431002
	Long Hill Twp	712001
	Madison Boro	1417001
	Mendham Boro	712001
	Mendham Boro	1418002
	Mendham Twp	712001
	Mendham Twp	1419001
	Mendham Twp	1424001
	Mine Hill Twp	1409001
	Mine Hill Twp	1420001
	Mine Hill Twp	1439001
	Montville Twp	906001
	Montville Twp	1421003
	Montville Twp	1421305
	Morris Plains Boro	1424001
	Morris Twp	1422001
	Morris Twp	1424001
	Morristown Town	1424001
	Mount Arlington Boro	1426002
	Mount Arlington Boro	1426004

Table D5. Public water systems and the municipalities they serve.

COUNTY	MUNICIPALITY	PWSID
	Mount Arlington Boro	1426005
	Mount Arlington Boro	1436003
	Mount Olive Twp	712001
	Mount Olive Twp	1427001
	Mount Olive Twp	1427002
	Mount Olive Twp	1427005
	Mount Olive Twp	1427006
	Mount Olive Twp	1427007
	Mount Olive Twp	1427008
	Mount Olive Twp	1427009
	Mount Olive Twp	1427010
	Mount Olive Twp	1427012
	Mount Olive Twp	1427014
	Mount Olive Twp	1427015
	Mount Olive Twp	1427016
	Mount Olive Twp	1427017
	Mount Olive Twp	1427018
	Mount Olive Twp	1428001
	Mount Olive Twp	2108001
	Mountain Lakes Boro	1408001
	Mountain Lakes Boro	1425001
	Mountain Lakes Boro	1429001

Table D5. Public water systems and the municipalities they serve.

COUNTY	MUNICIPALITY	PWSID
	Netcong Boro	1428001
	Parsippany-Troy Hills	1408001
	Parsippany-Troy Hills	1425001
	Parsippany-Troy Hills	1429001
	Pequannock Twp	1431001
	Pequannock Twp	1431002
	Randolph Twp	1408001
	Randolph Twp	1409001
	Randolph Twp	1432001
	Randolph Twp	1432003
	Riverdale Boro	1433001
	Rockaway Boro	1408001
	Rockaway Boro	1434001
	Rockaway Twp	1408001
	Rockaway Twp	1409001
	Rockaway Twp	1434001
	Rockaway Twp	1435001
	Rockaway Twp	1435002
	Rockaway Twp	1435003
	Rockaway Twp	1439001
	Roxbury Twp	1428001
	Roxbury Twp	1436002
	Roxbury Twp	1436003

Table D5. Public water systems and the municipalities they serve.

COUNTY	MUNICIPALITY	PWSID
	Roxbury Twp	1436004
	Victory Gardens Boro	1409001
	Washington Twp	1438001
	Washington Twp	1438003
	Washington Twp	1438004
	Washington Twp	1438006
	Washington Twp	2108001
	Wharton Boro	1409001
	Wharton Boro	1439001
Ocean	Barnegat Light Boro	1501001
	Barnegat Twp	1520001
	Barnegat Twp	1533001
	Barnegat Twp	1533002
	Bay Head Boro	1345001
	Beach Haven Boro	1503001
	Beachwood Boro	1504001
	Berkeley Twp	1505002
	Berkeley Twp	1505003
	Berkeley Twp	1505004
	Berkeley Twp	1507005
	Berkeley Twp	1521001
	Berkeley Twp	1526001
	Brick Twp	1506001
	Eagleswood Twp	1508001

Table D5. Public water systems and the municipalities they serve.

COUNTY	MUNICIPALITY	PWSID
	Harvey Cedars Boro	1509001
	Island Heights Boro	1510001
	Jackson Twp	1511001
	Jackson Twp	1511002
	Jackson Twp	1511003
	Jackson Twp	1511004
	Jackson Twp	1511005
	Jackson Twp	1511007
	Jackson Twp	1511008
	Jackson Twp	1511011
	Jackson Twp	1511013
	Jackson Twp	1511016
	Lacey Twp	1512001
	Lakehurst Boro	1511010
	Lakehurst Boro	1513001
	Lakewood Twp	1345001
	Lakewood Twp	1514002
	Lavallette Boro	1345001
	Lavallette Boro	1515001
	Little Egg Harbor Twp	1516001
	Long Beach Twp	1517001
	Long Beach Twp	1517002
	Long Beach Twp	1517003

Table D5. Public water systems and the municipalities they serve.

COUNTY	MUNICIPALITY	PWSID
	Long Beach Twp	1517004
	Long Beach Twp	1517005
	Long Beach Twp	1517006
	Manchester Twp	1518001
	Manchester Twp	1518002
	Manchester Twp	1518003
	Manchester Twp	1518004
	Manchester Twp	1518005
	Manchester Twp	1518010
	Manchester Twp	1518011
	Manchester Twp	1518345
	Ocean Gate Boro	1521001
	Ocean Twp	1520001
	Pine Beach Boro	1522001
	Plumsted Twp	1523001
	Plumsted Twp	1523002
	Plumsted Twp	1523003
	Plumsted Twp	1523004
	Point Pleasant Beach Boro	1525001
	Point Pleasant Boro	1524001
	Point Pleasant Boro	1525001
	Seaside Heights Boro	1526001
	Seaside Park Boro	1527001

Table D5. Public water systems and the municipalities they serve.

COUNTY	MUNICIPALITY	PWSID
	Ship Bottom Boro	1528001
	South Toms River Boro	1507005
	Stafford Twp	1530003
	Stafford Twp	1530004
	Stafford Twp	1530005
	Stafford Twp	1530007
	Surf City Boro	1531001
	Toms River Twp	1345001
	Toms River Twp	1507005
	Toms River Twp	1507007
	Toms River Twp	1507008
	Tuckerton Boro	1516001
	Tuckerton Boro	1532002
Passaic	Bloomingtondale Boro	1403001
	Bloomingtondale Boro	1601001
	Clifton City	1605002
	Haledon Boro	1603001
	Hawthorne Boro	1604001
	Little Falls Twp	712001
	Little Falls Twp	1605001
	North Haledon Boro	1603001
	North Haledon Boro	1604001

Table D5. Public water systems and the municipalities they serve.

COUNTY	MUNICIPALITY	PWSID
	North Haledon Boro	1606301
	Passaic City	1605002
	Paterson City	1603001
	Paterson City	1605002
	Pompton Lakes Boro	1609001
	Prospect Park Boro	1604001
	Prospect Park Boro	1605002
	Ringwood Boro	1611002
	Ringwood Boro	1613002
	Totowa Boro	1603001
	Totowa Boro	1612001
	Totowa Boro	1612301
	Wanaque Boro	1613002
	Wayne Twp	1603001
	Wayne Twp	1614001
	West Milford Twp	1403001
	West Milford Twp	1615001
	West Milford Twp	1615002
	West Milford Twp	1615003
	West Milford Twp	1615006
	West Milford Twp	1615008
	West Milford Twp	1615009
	West Milford Twp	1615012

Table D5. Public water systems and the municipalities they serve.

COUNTY	MUNICIPALITY	PWSID
	West Milford Twp	1615014
	West Milford Twp	1615016
	West Milford Twp	1615017
	West Milford Twp	1615018
	West Milford Twp	1615020
	West Milford Twp	1615022
	West Milford Twp	1615340
	Woodland Park Boro	712001
	Woodland Park Boro	1605001
	Woodland Park Boro	1605002
	Woodland Park Boro	1616001
Salem	Carneys Point Twp	1707001
	Carneys Point Twp	1713001
	Elmer Boro	1702001
	Lower Alloways Creek Twp	1704001
	Mannington Twp	1712001
	Mannington Twp	1715001
	Oldmans Twp	1706001
	Oldmans Twp	1707001
	Penns Grove Boro	1707001
	Pennsville Twp	1708001
	Pilesgrove Twp	1715001

Table D5. Public water systems and the municipalities they serve.

COUNTY	MUNICIPALITY	PWSID
	Pittsgrove Twp	1710001
	Pittsgrove Twp	1710002
	Pittsgrove Twp	1710003
	Pittsgrove Twp	1710006
	Pittsgrove Twp	1710304
	Quinton Twp	1712001
	Salem City	1712001
	Upper Pittsgrove Twp	1714001
	Upper Pittsgrove Twp	1714003
	Woodstown Boro	1715001
Somerset	Bedminster Twp	712001
	Bedminster Twp	2004002
	Bernards Twp	712001
	Bernardsville Boro	712001
	Bernardsville Boro	1803002
	Bound Brook Boro	2004002
	Branchburg Twp	2004002
	Bridgewater Twp	2004002
	Far Hills Boro	712001
	Franklin Twp	1221004
	Franklin Twp	1808001
	Franklin Twp	2004002
	Green Brook Twp	2004002
	Hillsborough Twp	2004002

Table D5. Public water systems and the municipalities they serve.

COUNTY	MUNICIPALITY	PWSID
	Manville Boro	2004002
	Millstone Boro	2004002
	Montgomery Twp	2004002
	North Plainfield Boro	2004002
	Peapack-Gladstone	1815300
	Peapack-Gladstone	2004002
	Raritan Boro	2004002
	Rocky Hill Boro	1817001
	So Bound Brook Boro	2004002
	Somerville Boro	2004002
	Warren Twp	712001
	Warren Twp	2004002
	Watchung Boro	712001
	Watchung Boro	2004002
Sussex	Andover Boro	1901001
	Andover Boro	1902008
	Andover Boro	1902009
	Andover Boro	1918004
	Andover Twp	1902003
	Andover Twp	1902004
	Andover Twp	1902005
	Andover Twp	1902007
	Andover Twp	1902346

Table D5. Public water systems and the municipalities they serve.

COUNTY	MUNICIPALITY	PWSID
	Andover Twp	1904003
	Branchville Boro	1903001
	Byram Twp	1904001
	Byram Twp	1904002
	Byram Twp	1904003
	Byram Twp	1904004
	Byram Twp	1904006
	Byram Twp	1904007
	Byram Twp	1904009
	Byram Twp	1918004
	Frankford Twp	1903001
	Frankford Twp	1905002
	Franklin Boro	1906001
	Franklin Boro	1906002
	Fredon Twp	1907001
	Fredon Twp	1907002
	Green Twp	1908001
	Hamburg Boro	1909001
	Hampton Twp	1910002
	Hampton Twp	1910003
	Hampton Twp	1920001
	Hardyston Twp	1911001
	Hardyston Twp	1911002
	Hardyston Twp	1911003
	Hardyston Twp	1911004

Table D5. Public water systems and the municipalities they serve.

COUNTY	MUNICIPALITY	PWSID
	Hardyston Twp	1911005
	Hardyston Twp	1911006
	Hopatcong Boro	1912001
	Hopatcong Boro	1912300
	Lafayette Twp	1918004
	Montague Twp	1914002
	Newton Town	1905004
	Newton Town	1915001
	Ogdensburg Boro	1916001
	Sparta Twp	1918003
	Sparta Twp	1918004
	Sparta Twp	1918013
	Stanhope Boro	1919001
	Stillwater Twp	1920001
	Sussex Boro	1921001
	Vernon Twp	1922001
	Vernon Twp	1922004
	Vernon Twp	1922005
	Vernon Twp	1922006
	Vernon Twp	1922008
	Vernon Twp	1922010
	Vernon Twp	1922011
	Vernon Twp	1922012
	Vernon Twp	1922013
	Vernon Twp	1922015

Table D5. Public water systems and the municipalities they serve.

COUNTY	MUNICIPALITY	PWSID
	Vernon Twp	1922017
	Vernon Twp	1922021
	Vernon Twp	1922022
	Vernon Twp	1922026
	Vernon Twp	1922027
	Wantage Twp	1924002
	Wantage Twp	1924003
	Wantage Twp	1924004
	Wantage Twp	1924006
Union	Berkeley Heights Twp	712001
	Clark Twp	1225001
	Clark Twp	2004002
	Cranford Twp	2004002
	Elizabeth City	2004001
	Fanwood Boro	2004002
	Garwood Boro	2004002
	Hillside Twp	712001
	Hillside Twp	2004002
	Kenilworth Boro	2004002
	Linden City	2004002
	Mountainside Boro	2004002
	New Providence Boro	712001
	Plainfield City	2004002

Table D5. Public water systems and the municipalities they serve.

COUNTY	MUNICIPALITY	PWSID
	Rahway City	2013001
	Roselle Boro	2004002
	Roselle Park Boro	2004002
	Scotch Plains Twp	2004002
	Springfield Twp	712001
	Summit City	712001
	Union Twp	712001
	Union Twp	2004002
	Westfield Town	2004002
	Winfield Twp	2021001
Warren	Allamuchy Twp	2101001
	Alpha Boro	2102001
	Belvidere Town	712001
	Belvidere Town	2103001
	Belvidere Town	2103002
	Blairstown Twp	2104001
	Franklin Twp	712001
	Franklin Twp	2121001
	Frelinghuysen Twp	2106304
	Greenwich Twp	2119001
	Hackettstown Town	2108001
	Harmony Twp	2110001
	Harmony Twp	2110003
	Independence Twp	2108001

Table D5. Public water systems and the municipalities they serve.

COUNTY	MUNICIPALITY	PWSID
	Independence Twp	2112001
	Independence Twp	2112002
	Knowlton Twp	2113002
	Knowlton Twp	2113003
	Knowlton Twp	2113301
	Lopatcong Twp	2119001
	Mansfield Twp	1438001
	Mansfield Twp	2108001
	Mansfield Twp	2116002
	Mansfield Twp	2116003
	Mansfield Twp	2116004
	Mansfield Twp	2116328
	Oxford Twp	712001
	Oxford Twp	2117002
	Oxford Twp	2117003
	Oxford Twp	2121001
	Phillipsburg Town	2119001
	Pohatcong Twp	1918004
	Pohatcong Twp	2119001
	Pohatcong Twp	2120001
	Pohatcong Twp	2120002
	Washington Boro	712001
	Washington Boro	2121001
	Washington Twp	712001

Table D5. Public water systems and the municipalities they serve.

COUNTY	MUNICIPALITY	PWSID
	Washington Twp	2121001
	White Twp	712001
	White Twp	2103001
	White Twp	2123002
	White Twp	2123003