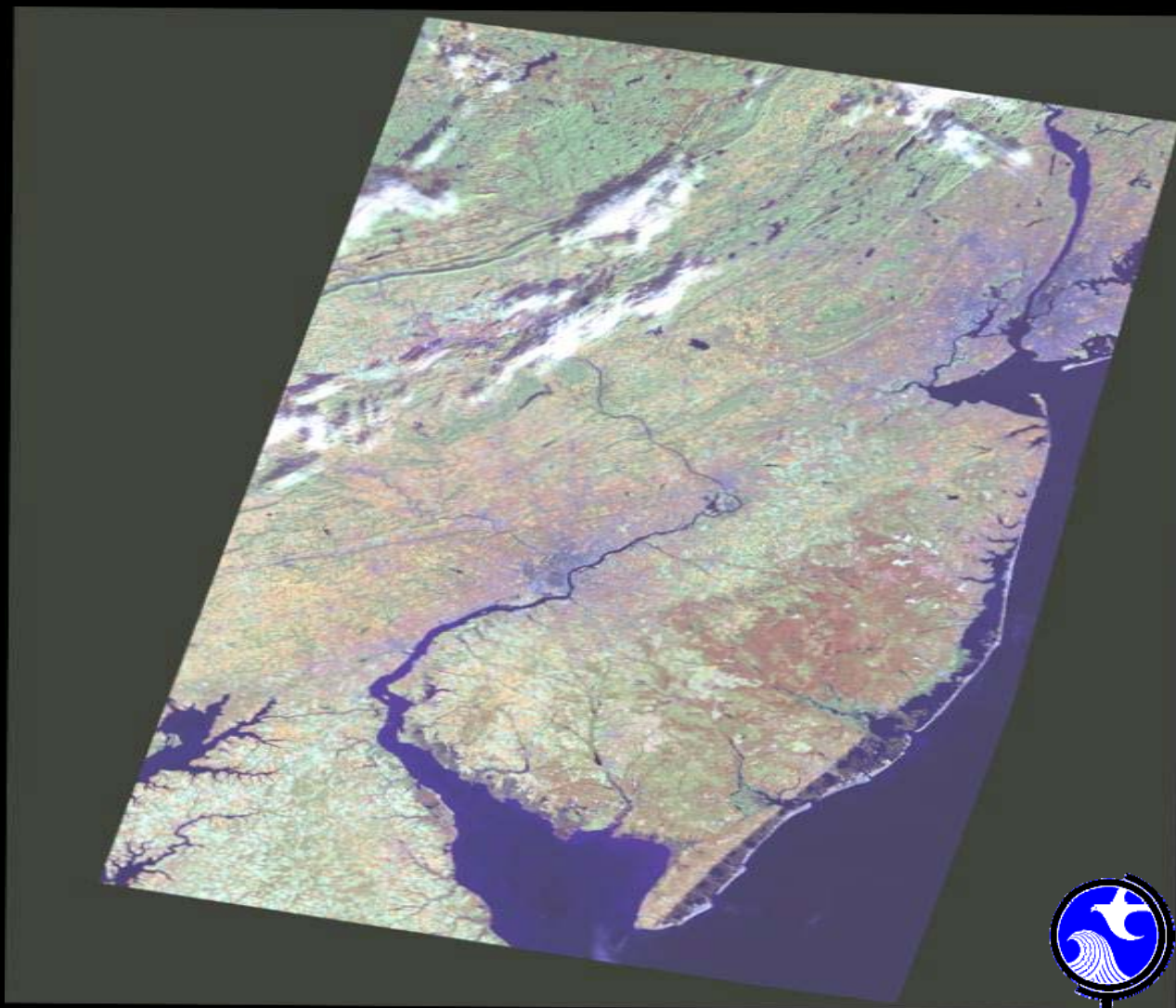


New Jersey Department of Environmental Protection
Division of Watershed Management
Office of Watershed Education, Estuaries & Monitoring

Cooperative Coastal Monitoring Program



Virginia Loftin

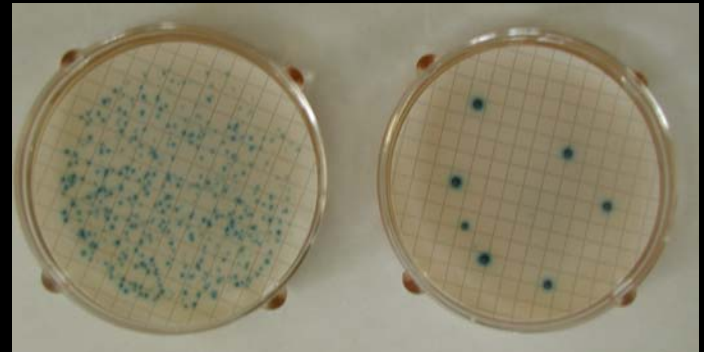
609-984-5599

virginia.loftin@dep.state.nj.us



Summary

- CCMP Overview
- Monitoring Activities
- Potential Sources of Contamination at Beaches
- Beach Closings
- Aerial Surveillance of Coast
- Clean Shores Program
- Adopt A Beach Program
- Web Based Data Reporting
- Public Notification
- Funding Sources



Cooperative Coastal Monitoring Program

- Program began in 1974
- Program revised and State Sanitary Code adopted in 1986
- Responded to public health concerns
- Provided data required for general and site-specific water quality analyses

Activities include:

- Weekly monitoring of bathing beaches for enterococcus bacteria
- Aerial surveillance of coast
- Regular inspections at coastal sewage treatment plants
- Public notification of beach conditions

Complimentary Programs:

Clean Shores Program, Adopt A Beach Program

Cooperative Program Between:

NJ Department of Environmental Protection

NJ Department of Health and Senior Services

County Health Departments

Monmouth County HD

Ocean County HD

Atlantic County HD

Cape May County HD

Middlesex County HD

Local Health Departments

Middletown HD

Northeast Monmouth Regional Health Commission

Long Branch HD

Long Beach Township HD

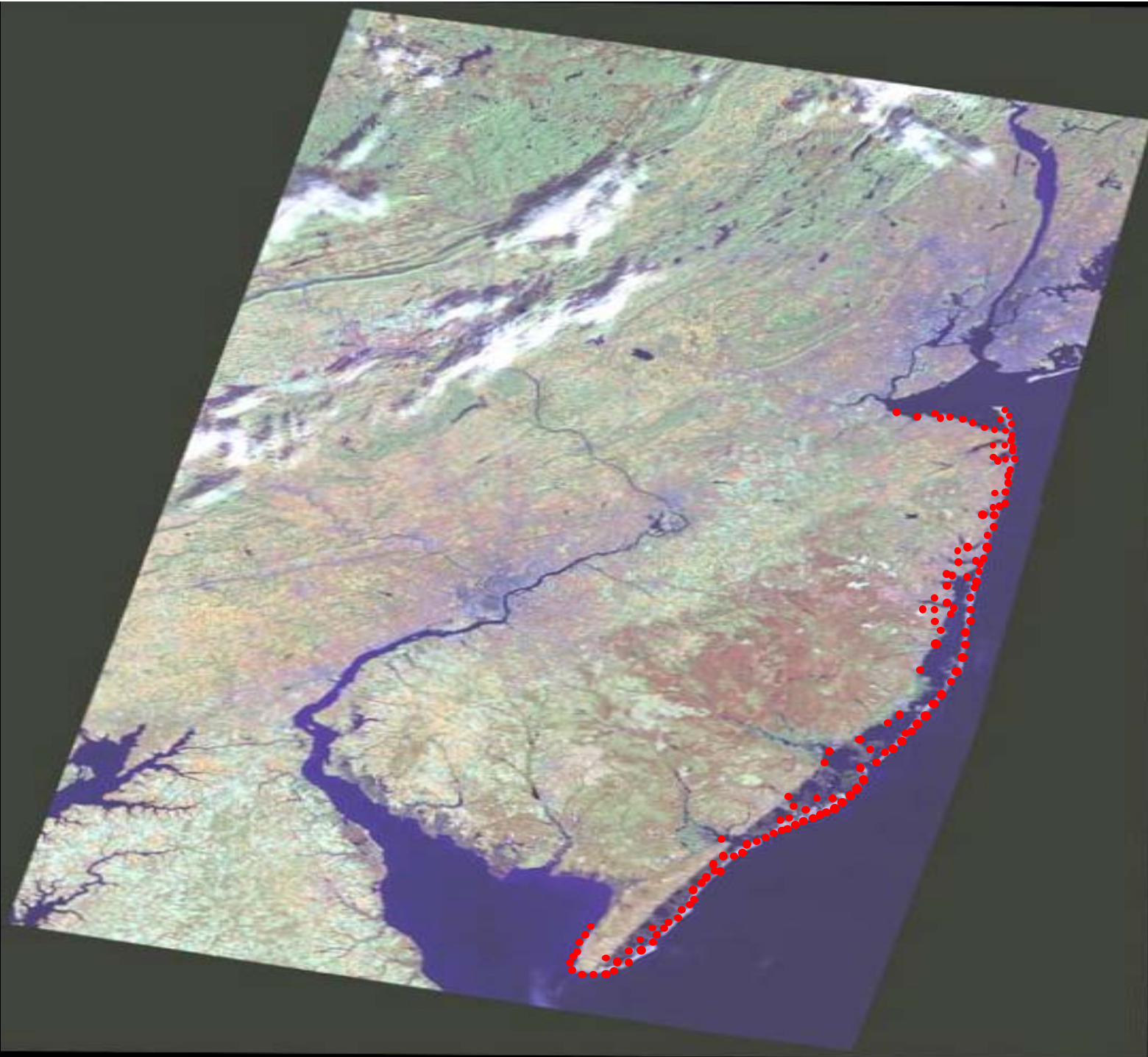
Atlantic City HD

186 Ocean stations

Most ocean
monitoring
stations are
associated with
potential
pollution sources

139 Bay Stations

All bay beaches
are monitored





Monitoring begins in mid-May and runs through early September. Samples are collected weekly on Mondays.

Standard is 104 enterococci bacteria per 100 mL of sample











Coastal Lake Discharges

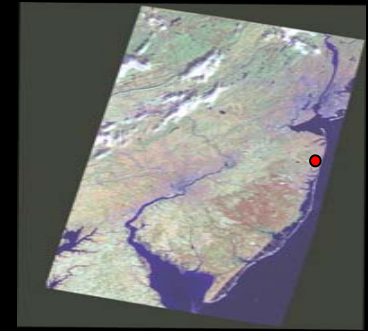


Deal Lake, Loch Arbour

Sylvan Lake, Avon



Monmouth County Health Department Rain Provisional Policy



Wreck Pond, Spring Lake



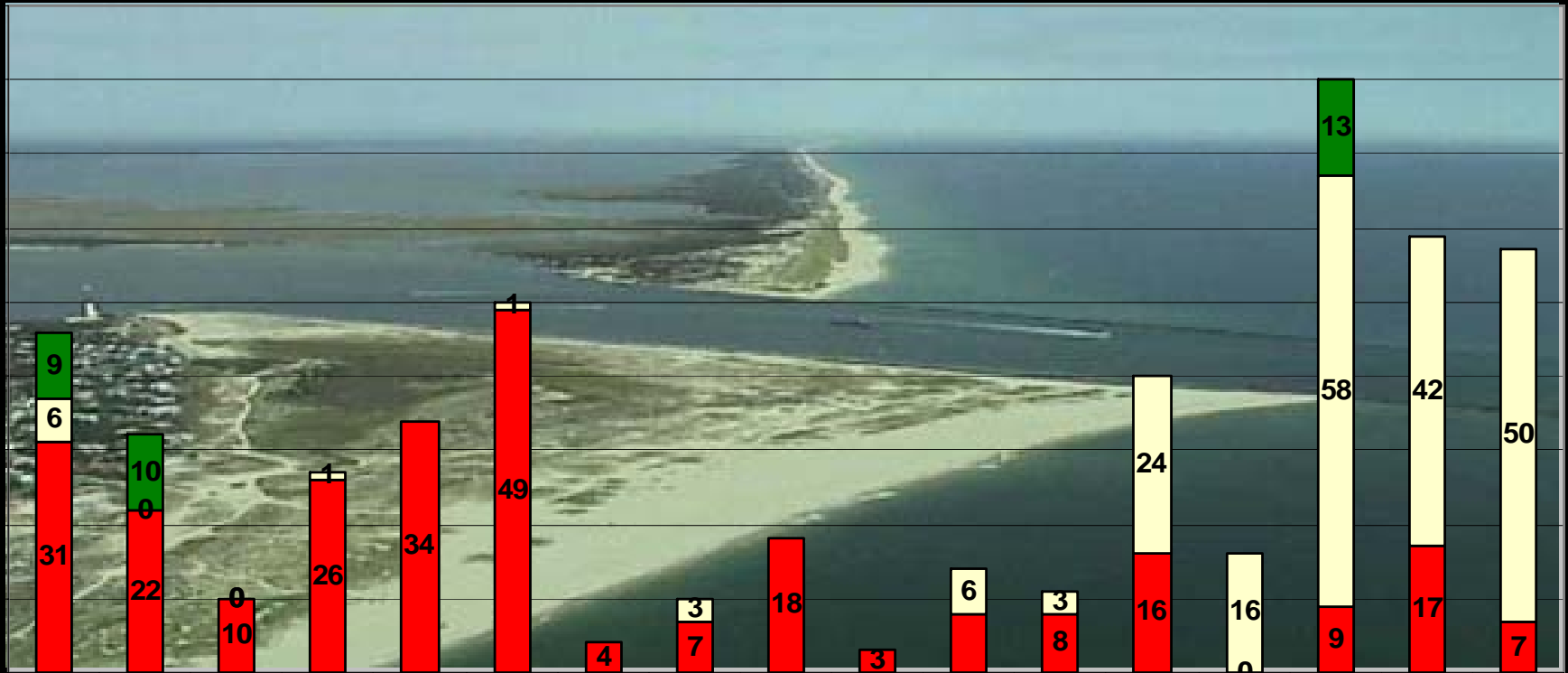
Coastal Sewage Treatment Plant Inspections



DEP inspects 17 coastal STPs and monitors discharges to coastal waters

Ocean Beach Closings

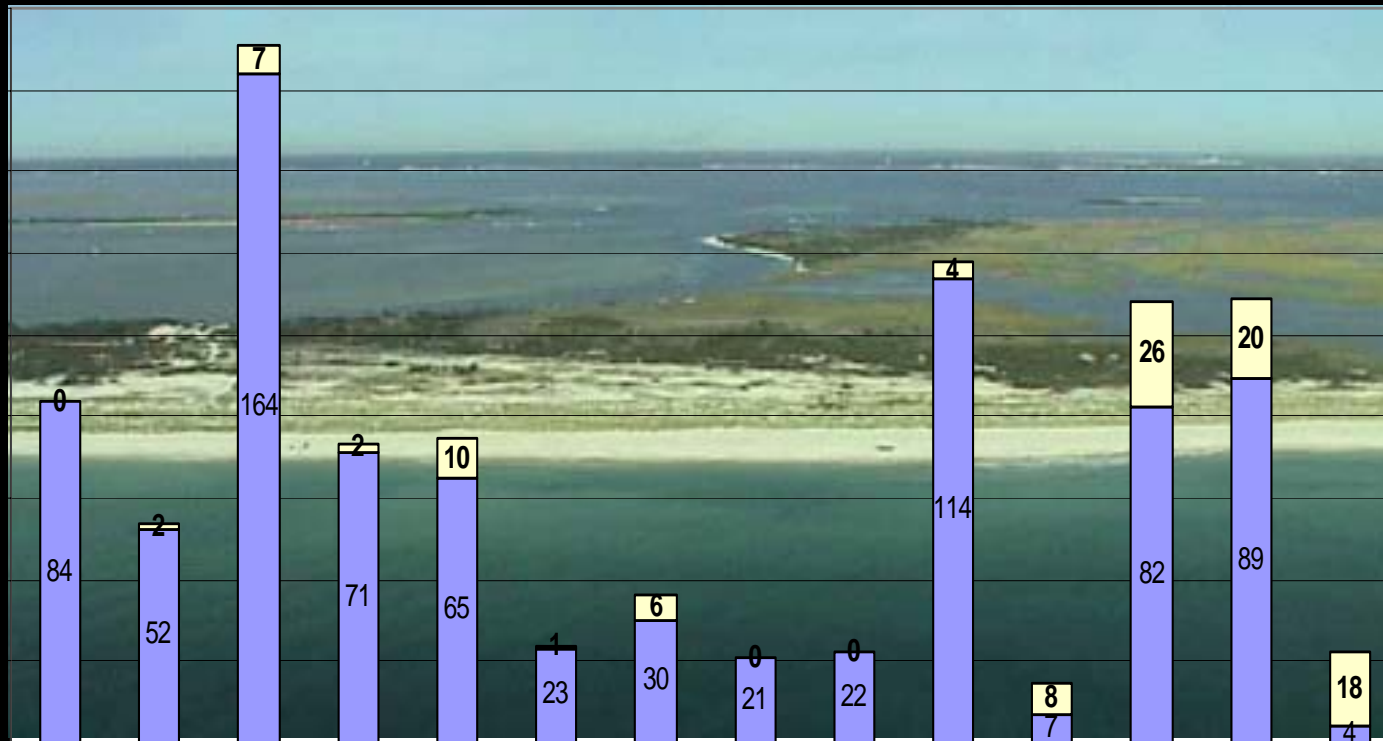
1989 - 2005



■ For Bacteria in Excess of Standard ■ Precautionary ■ Floatables

Bay Beach Closings

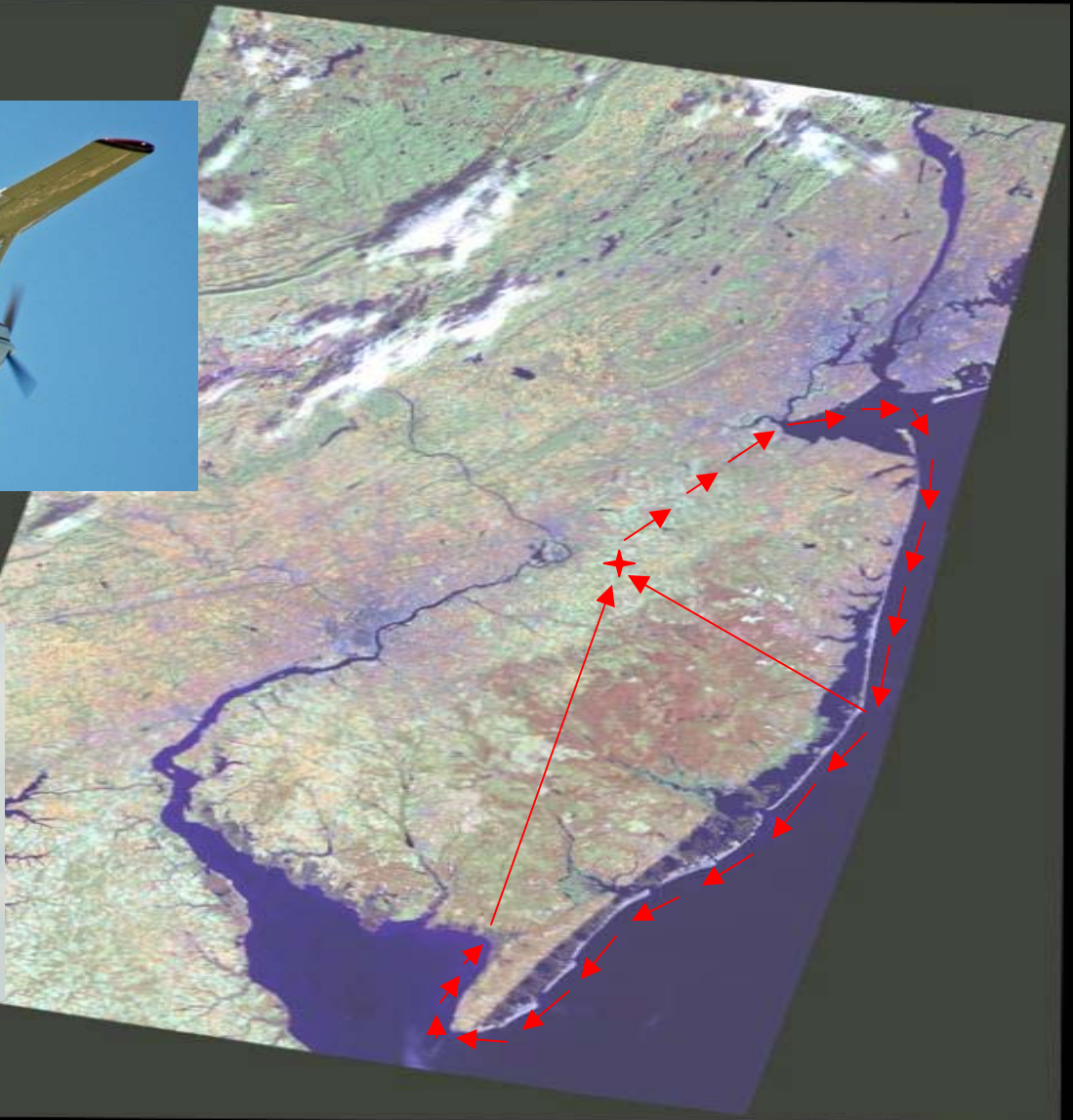
1992 - 2005



■ for bacteria in excess of standard

■ precautionary

Aerial Surveillance

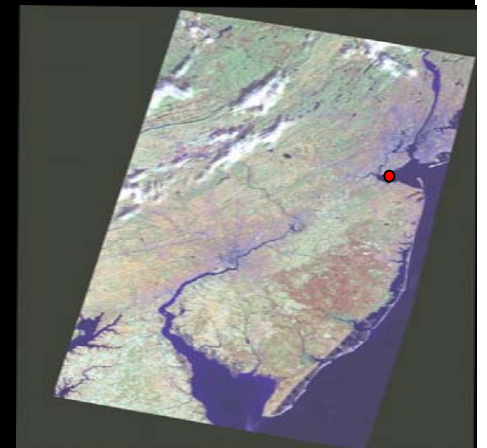


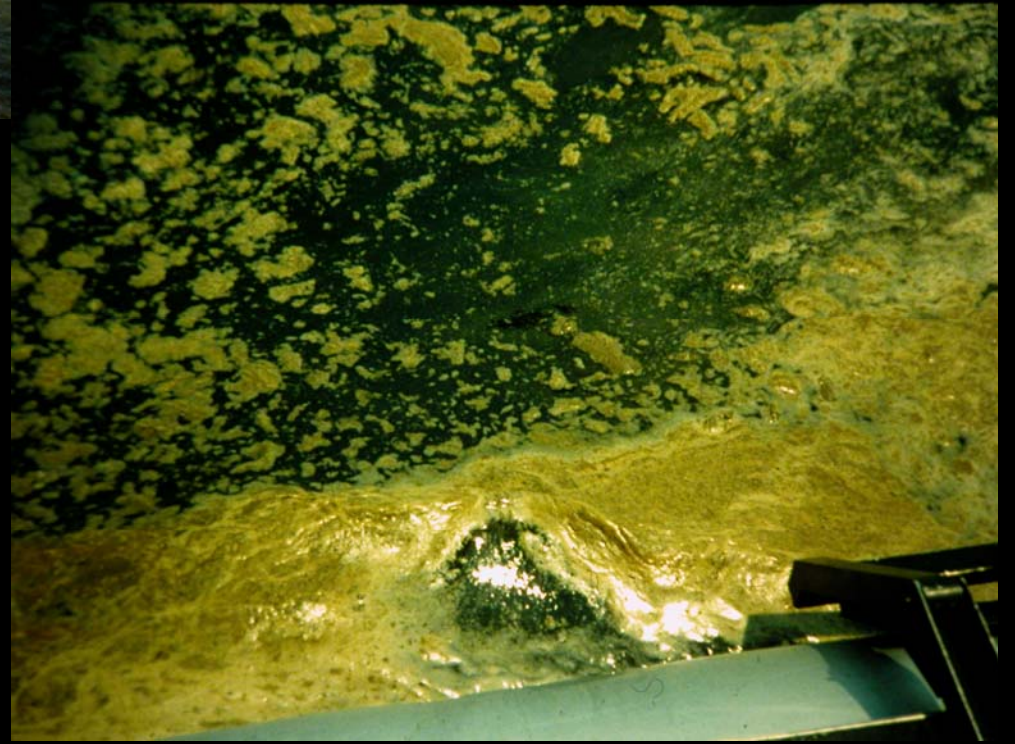
What we're
looking for...



Middlesex County Utilities Authority

Raritan Bay outfall
~95-150 mgd







What we usually see...







1-877-WARN DEP

**CCMP staff on call 24/7 early May
through late September for any
pollution reports in tidal waters**

DEP staff respond to pollution reports



Past Sources of Floatable Debris...



Current Sources of Floatable Debris...



Clean Shores



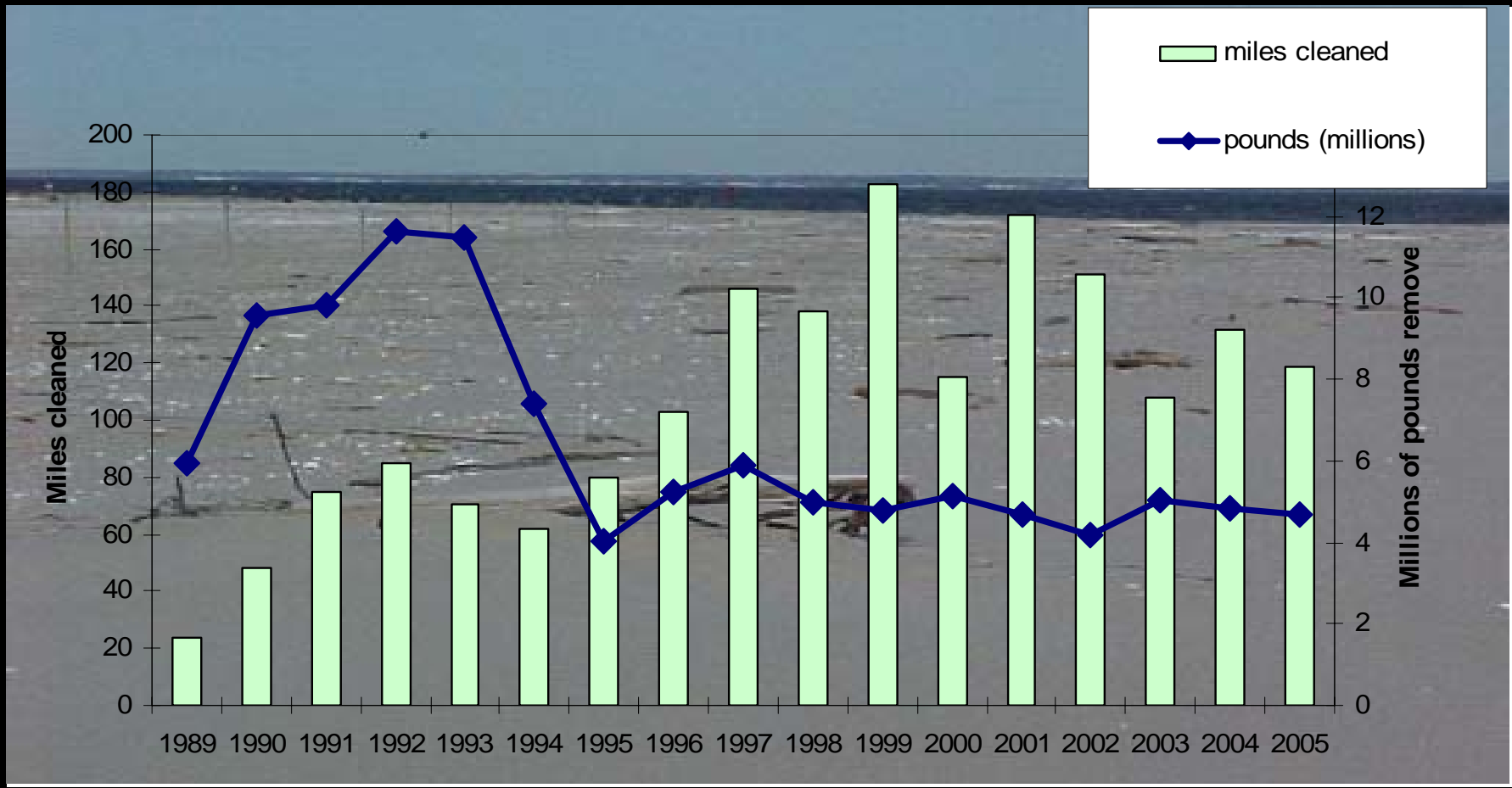


Dune fence and grass planting during spring and fall



Clean Shores

1989 - 2005



US Army Corp of Engineers



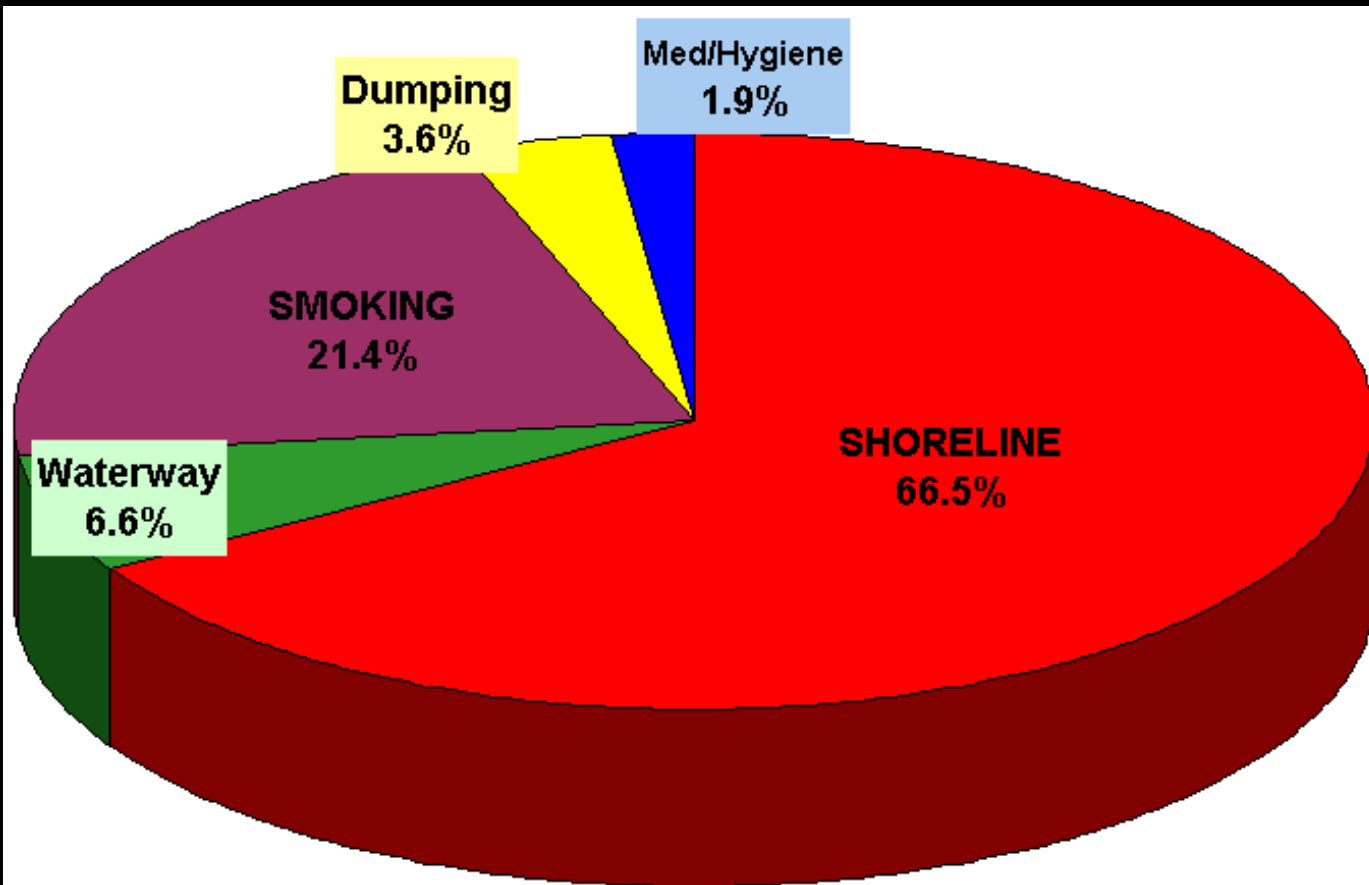


Adopt A Beach

2 beach cleanups each year

~ 1000 volunteers/cleanup





Adopt A Beach

2005 Debris Source Data

Web-Based Reporting

Completely paperless system - PDAs distributed to all county field samplers

Field data is downloaded at lab at time of sample drop-off



Web-Based Reporting

NJ Beach Monitoring Solution
Laboratory Reports

Default Entry 6/11/2004 11:00

Save	Location (Station#)	Date Sampled	Date Analyzed	Time Analyzed
<input type="checkbox"/>	Gary Lake Street Beach (LakeStr2)	6/9/2004	6/11/2004	11:00
		Results	Comments	
		E coli: 2	None Detected	
<input checked="" type="checkbox"/>	Gary Lake Street Beach (LakeStr2)	6/10/2004	6/11/2004	11:00
		Results	Comments	
		E coli: 350	- Select -	
<input type="checkbox"/>	Gary Marquette Park Beach (Marquet1)	6/9/2004	6/11/2004	11:00
		Results	Comments	

- Lab managers enter sample results directly on to web page
- System recommends action for agency officials (e.g. closures)
- Posting determinations are immediately available on NJDEP and Earth 911 websites
- Citizens, lifeguards, media, resorts, other stakeholders receive immediate email alerts of closures/advisories via “opt-in”
- Results are immediately available for EPA BEACH Data Flow.

Web-Based Reporting

NJ Beach Monitoring Solution
Health-Based Risk Determination

Location (Station#)	Date Sampled	Analyzed by	Date / Time Analyzed	Analysis Parameter	Results	Comments	Close	Reason
Gary Lake Street Beach (LakeStr2)	6/10/2004	CP	6/11/2004 11:00:00 AM	E coli	350		<input checked="" type="checkbox"/>	Bacteria levels in monitoring excee
Gary Marquette Park Beach (Marquet1)	6/10/2004	CP	6/11/2004 11:15:00 AM	E coli	<2	None Detected	<input type="checkbox"/>	- Select -

NJ BMS Main Page

- State-of-the-art technology reduces workload and streamlines data management at all levels of government
- Government-to-Government and Government-to-Public information exchange through one seamless network

1-800-648-SAND

[njhome](#) | [my new jersey](#) | [people](#) | [business](#) | [government](#) | [departments](#)

 **njdep**
new jersey
department of environmental protection

NJBEACHES.ORG



[njdep home](#)

This site provides information related to New Jersey's ocean beach water quality and public access locations.


TODAY'S UPDATES

Water quality monitoring and aerial surveillance of bathing beaches have ended for the 2005 summer season. Please check back in May 2006 for daily updates of beach conditions and flight observations.

This information can also be accessed by calling:

1-800-648-SAND

This web page is updated each weekday afternoon after flight reports are filed and water quality results are received from the labs. This page will be updated on weekends as needed to reflect changing conditions.



About the Program
The **New Jersey Department of Environmental Protection** administers the **Cooperative Coastal Monitoring Program** with the New Jersey Department of Health and Senior Services and local environmental health agencies. Recreational beach water quality monitoring is performed routinely on Mondays and throughout the week as necessary at 186 ocean monitoring stations.

[View Cooperative Coastal Monitoring Program information.](#)

Ocean Monitoring Results
Select a county below to view detailed results .

Funding Sources



Up to \$200K from the sale of the Shore Protection License Plate



~ 280K each year from annual EPA BEACH grants – 90% is passed through to counties