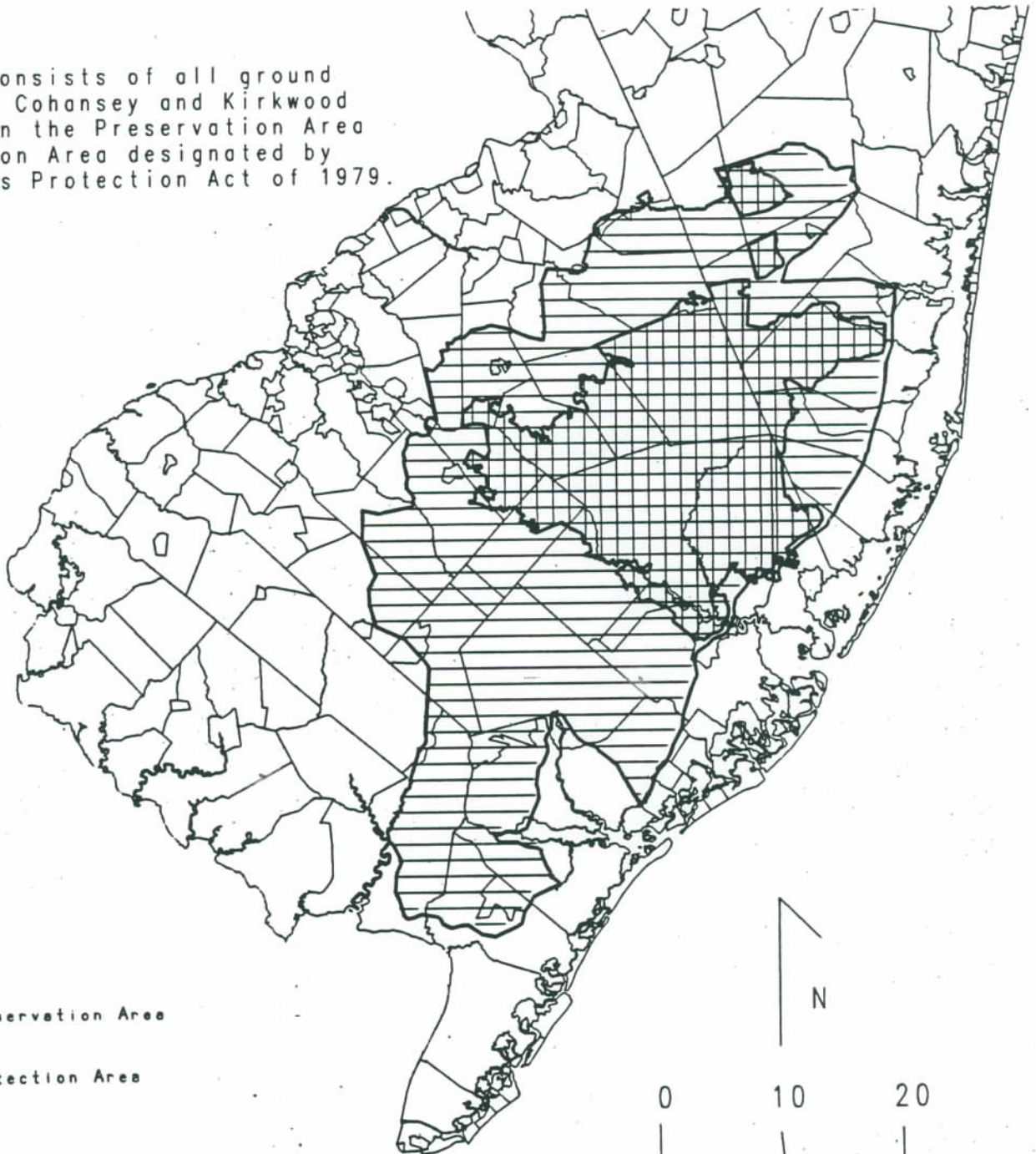


# Figure 1

## New Jersey Ground Water Classification System Class I-PL - New Jersey Pinelands

### EXPLANATION:

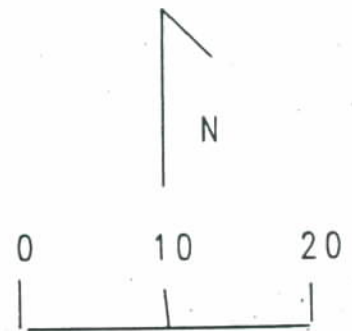
Class I-PL consists of all ground water of the Cohansey and Kirkwood Formations in the Preservation Area and Protection Area designated by the Pinelands Protection Act of 1979.



Class I-PL Preservation Area



Class I-PL Protection Area



Miles

## FIGURE 2

### New Jersey Ground Water Classification System Class IIIA - Aquitards of the New Jersey Coastal Plain



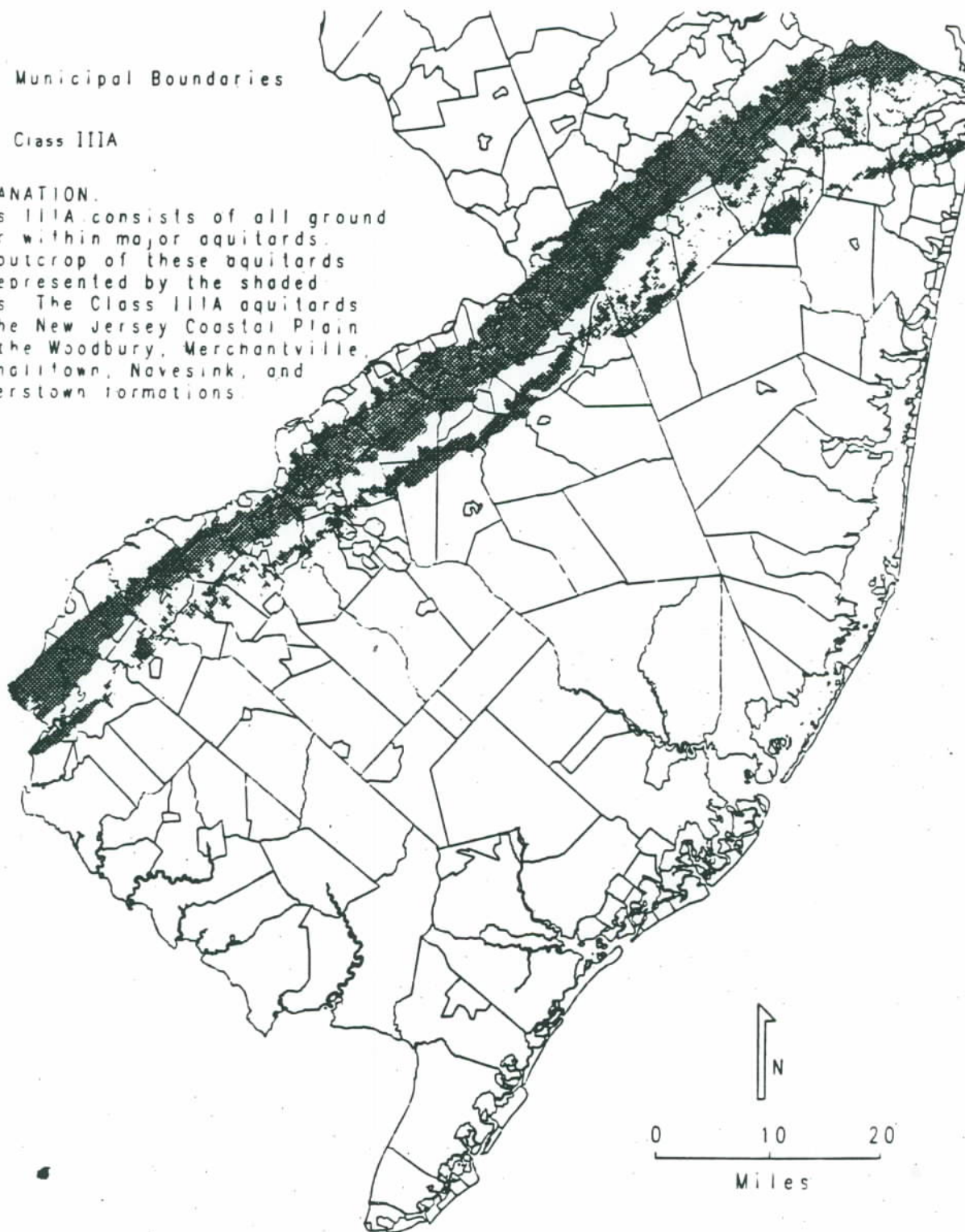
Municipal Boundaries



Class IIIA

#### EXPLANATION.

Class IIIA consists of all ground water within major aquitards. The outcrop of these aquitards is represented by the shaded areas. The Class IIIA aquitards in the New Jersey Coastal Plain are the Woodbury, Merchantville, Marshalltown, Navesink, and Hornerstown formations.

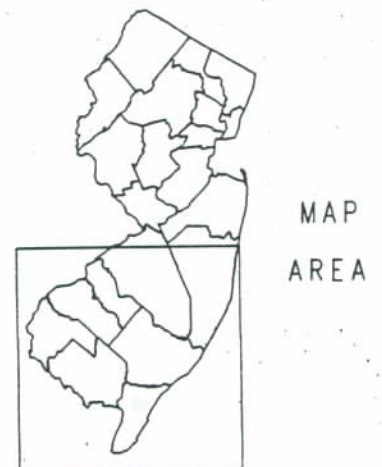
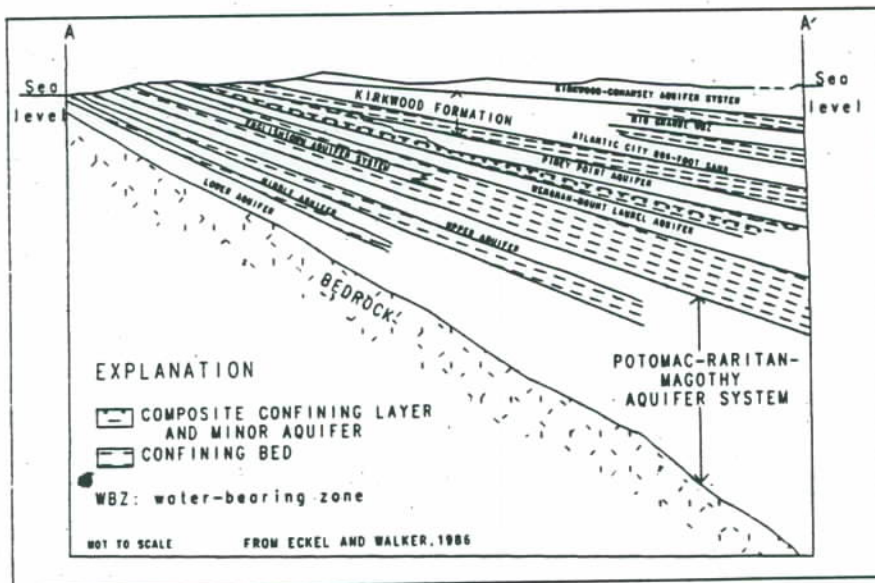
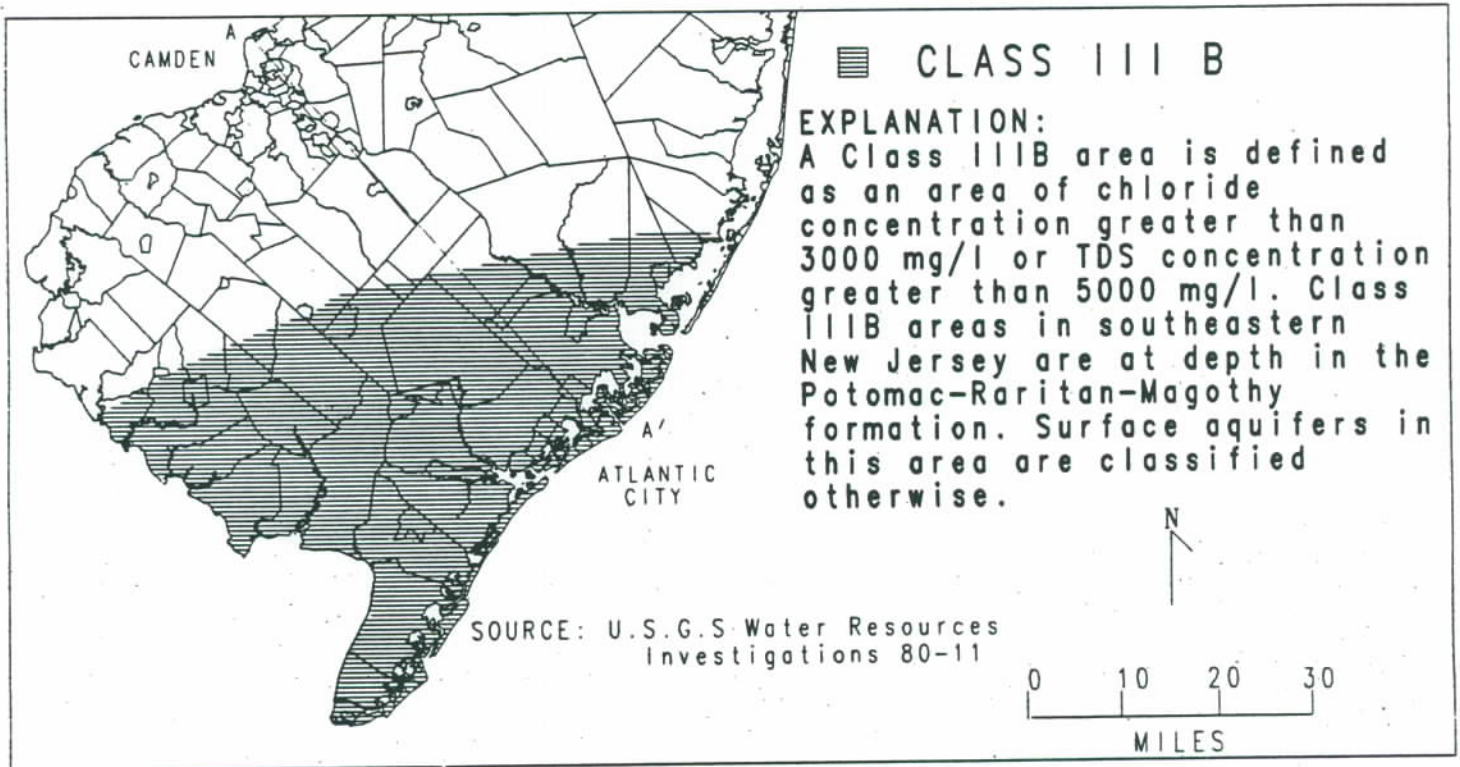


# FIGURE 3

## NEW JERSEY GROUND WATER CLASSIFICATION SYSTEM

### CLASS III B

#### CRETACEOUS POTOMAC-RARITAN-MAGOTHY FORMATION

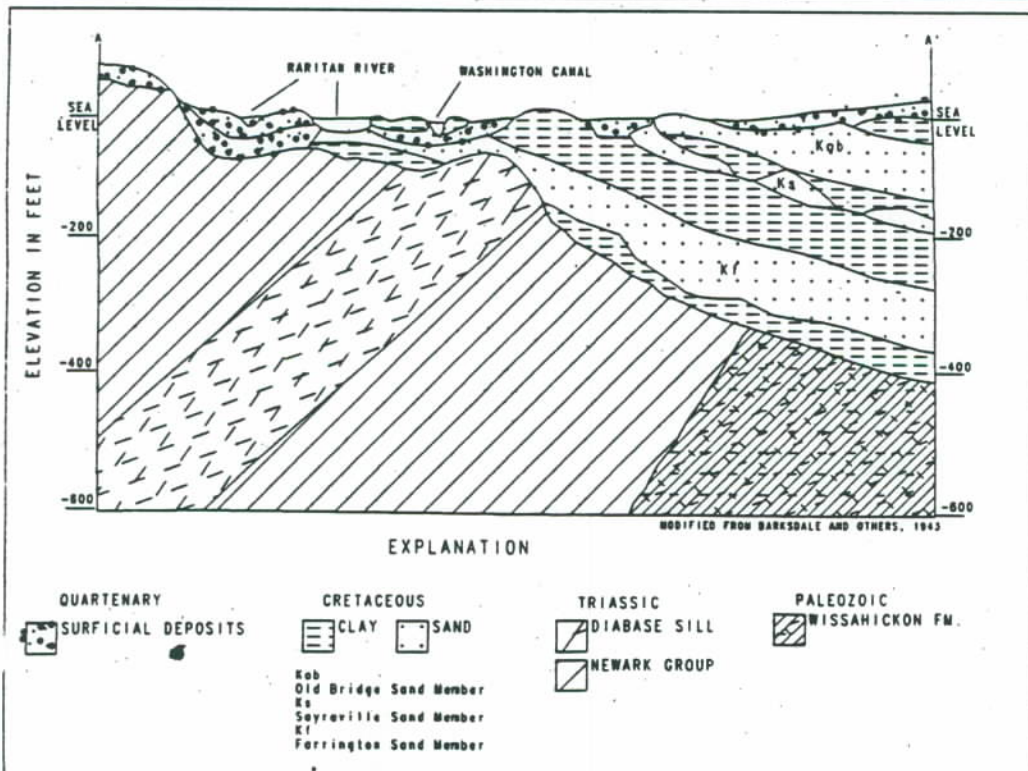
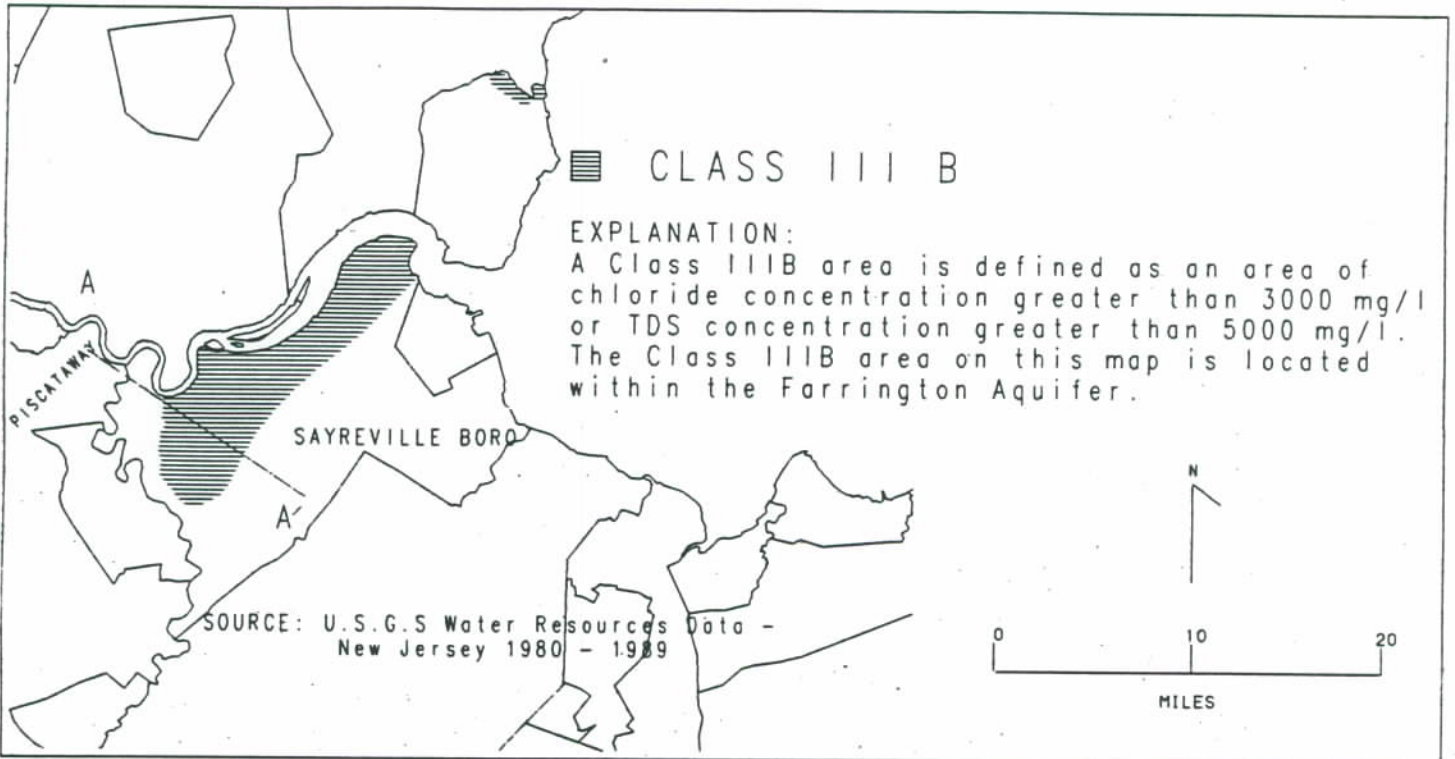


# FIGURE 4

## NEW JERSEY GROUND WATER CLASSIFICATION SYSTEM

### CLASS III B

### FARRINGTON AQUIFER

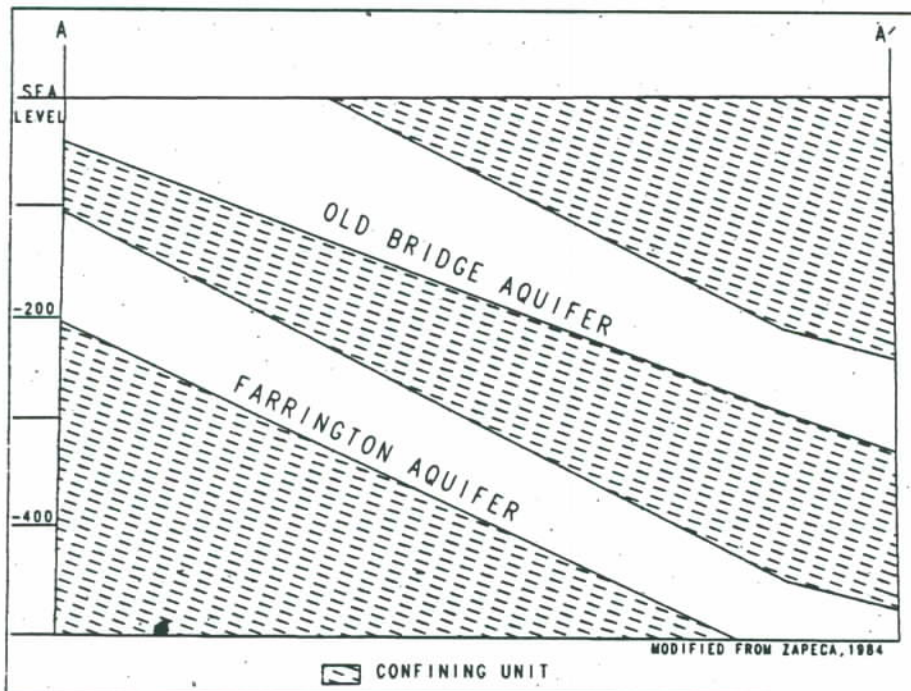
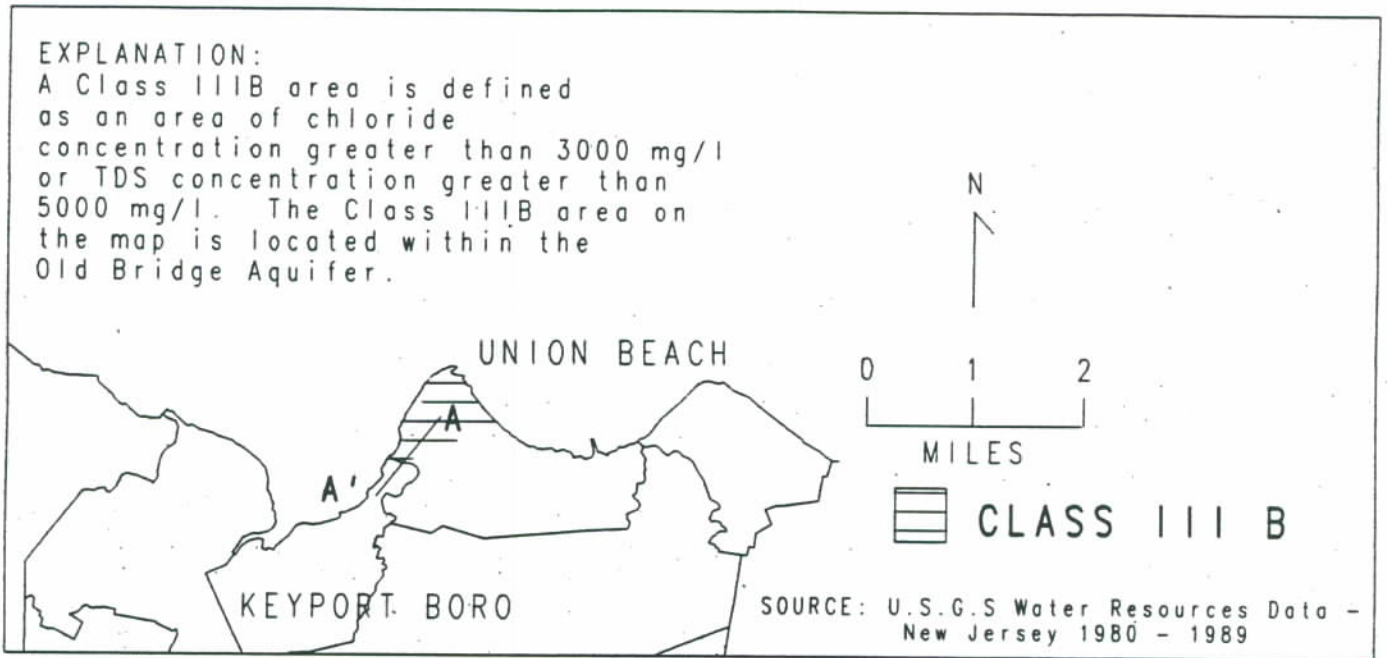


#### MAP AREA



# NEW JERSEY GROUND WATER CLASSIFICATION SYSTEM

## FIGURE 5 CLASS III B OLD BRIDGE AQUIFER



### MAP AREA

