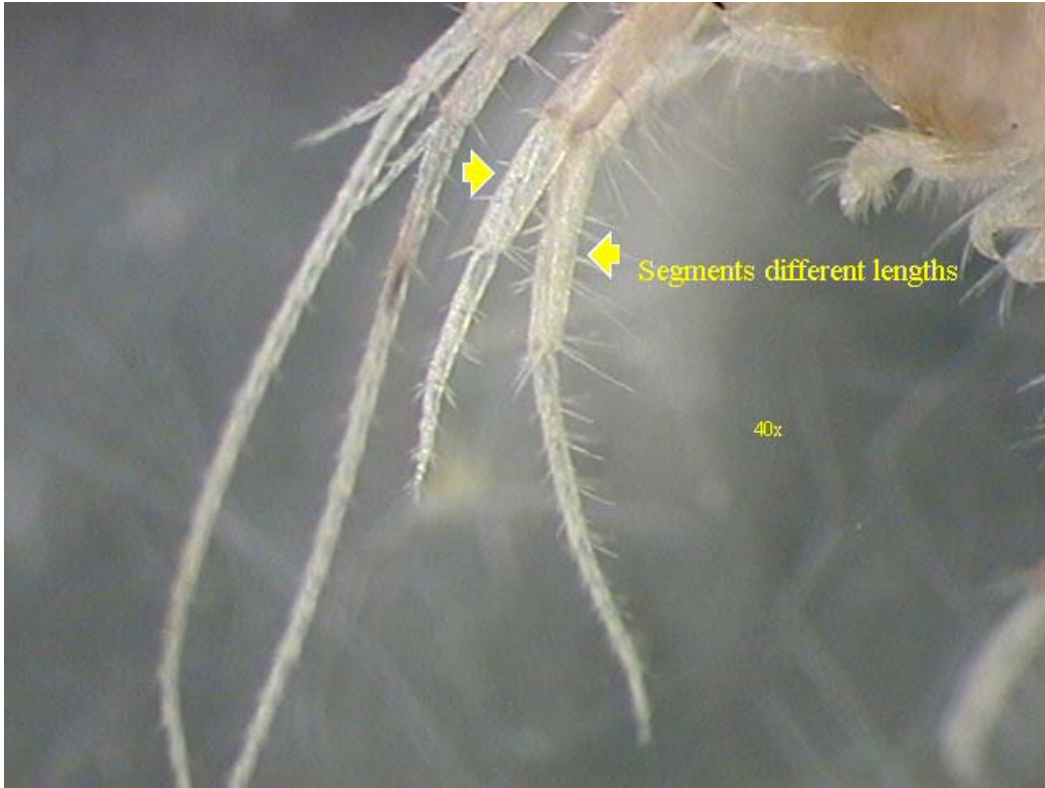


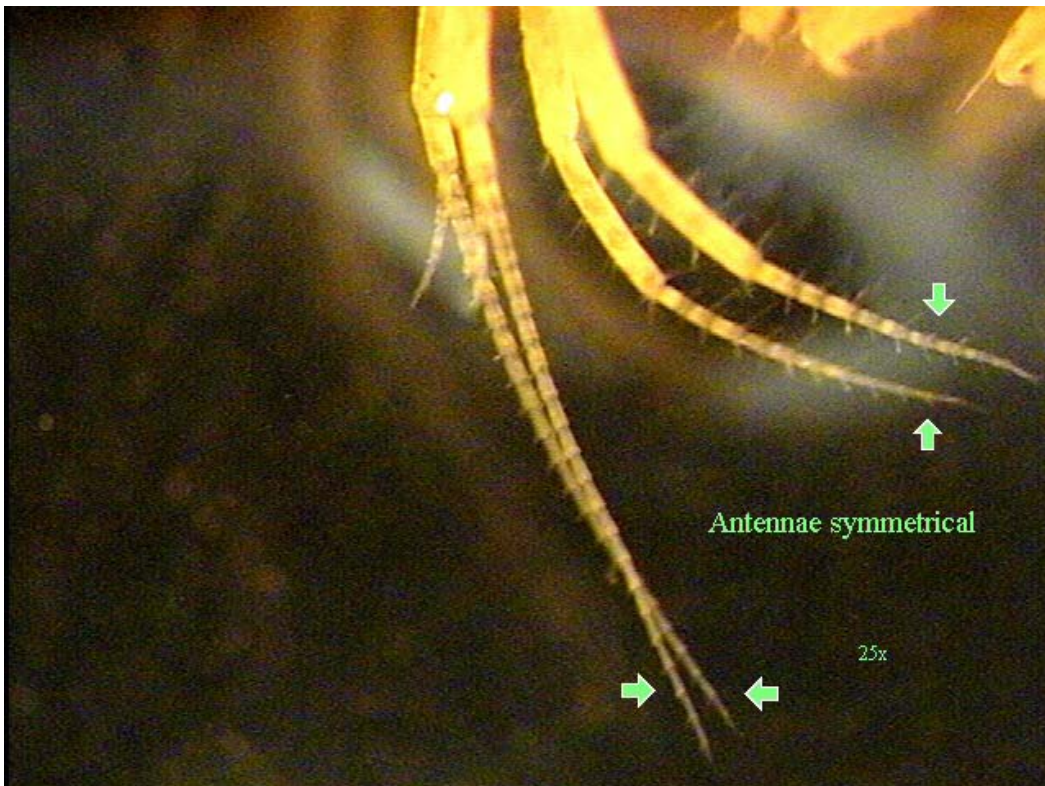
APPENDIX B

Pictures of Morphological Abnormalities in Larval
Chironomidae and Amphipoda Recovered in Recent AMNET
Surveys

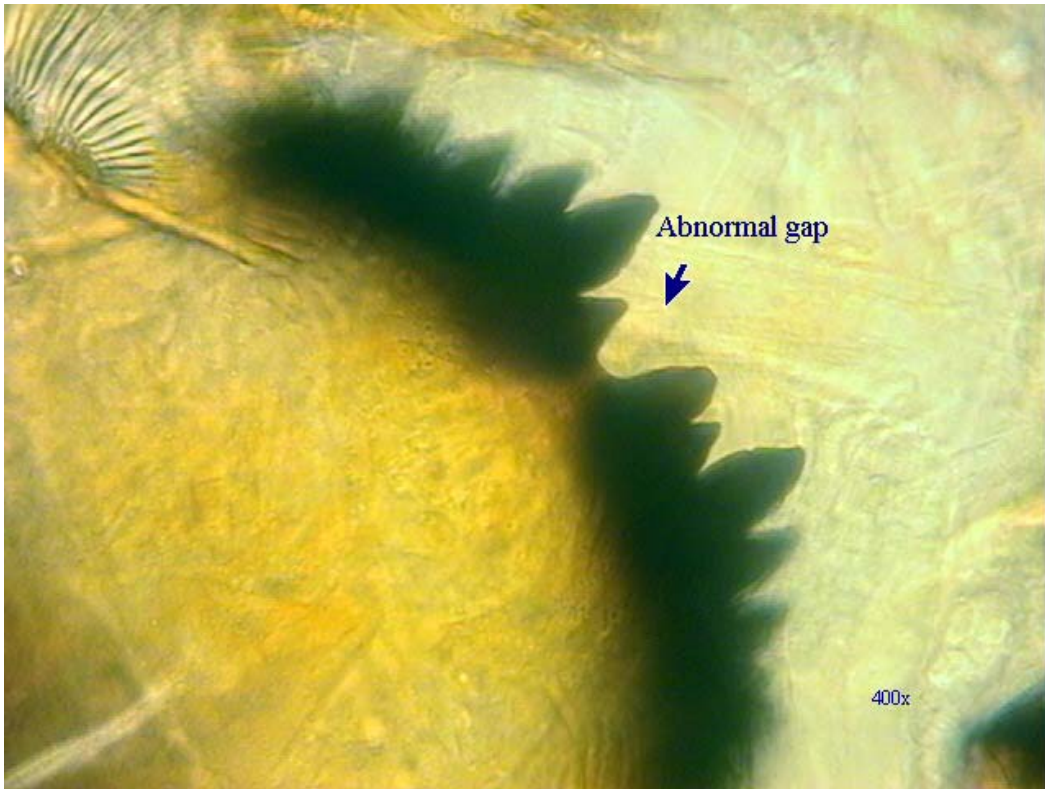
Gammarus fasciatus with second antennae showing different lengths



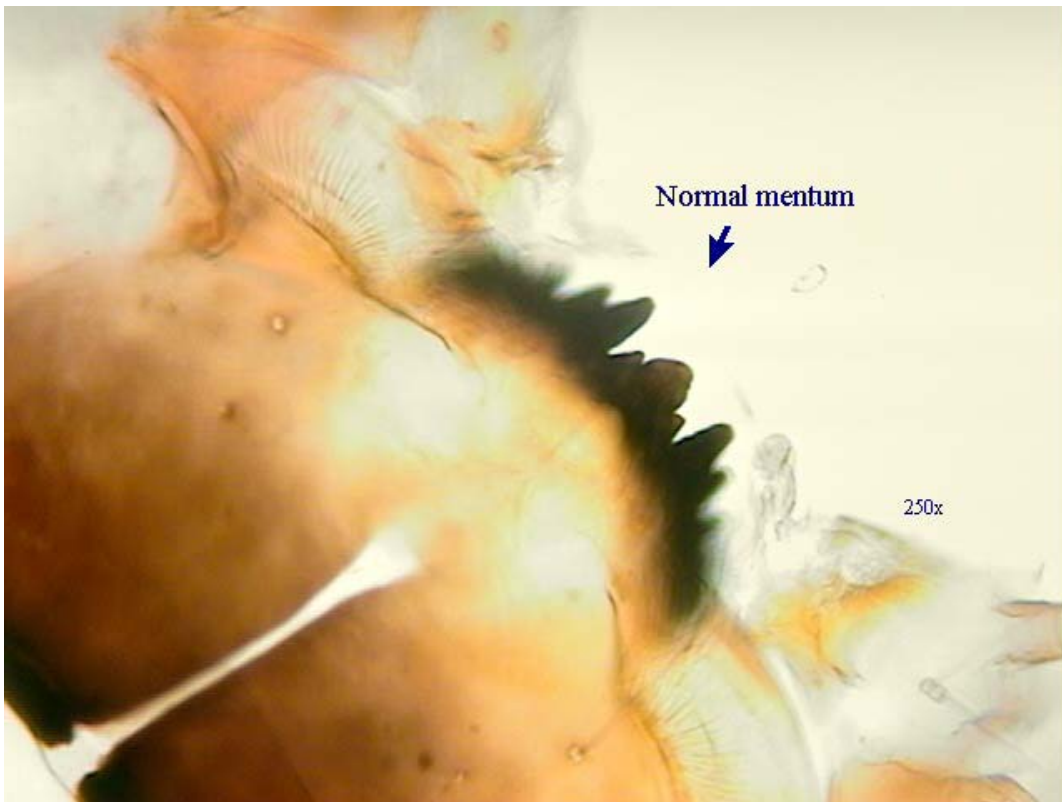
Gammarus fasciatus with normal antennae (showing antennal pairs of same length)



Chironomus species with mentum abnormality



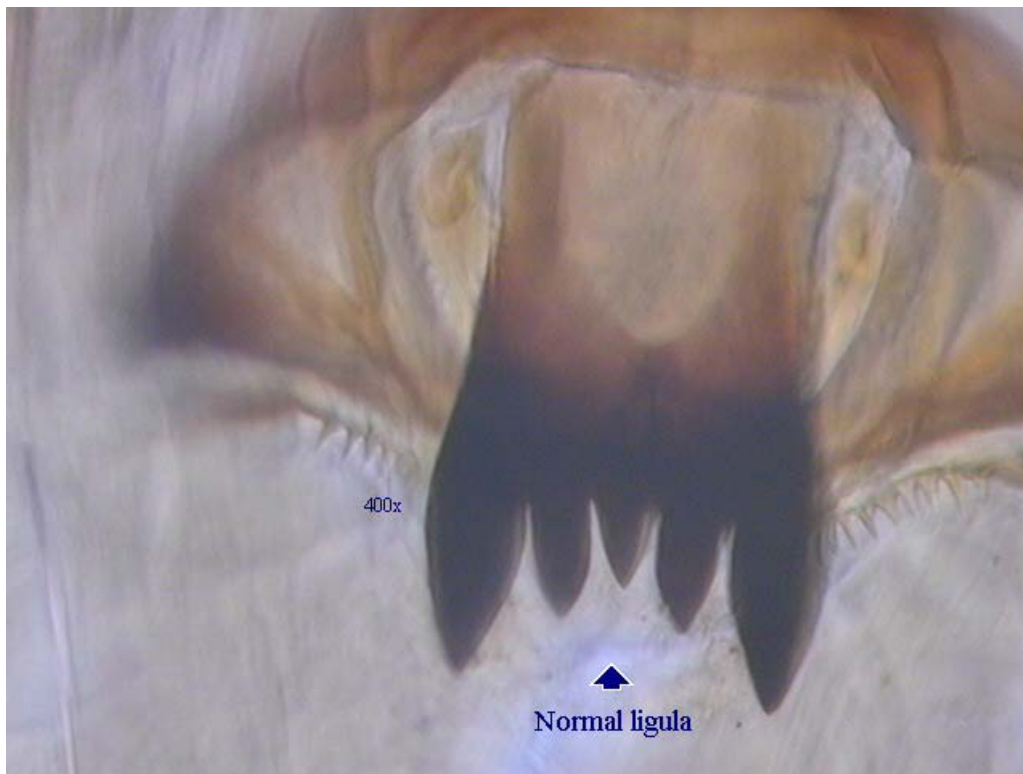
Chironomus species with normal mentum



Procladius species with abnormal ligula



Procladius species with normal ligula



Polypedilum species with abnormal mentum



Polypedilum species with normal mentum

