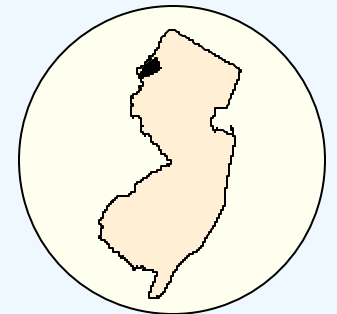
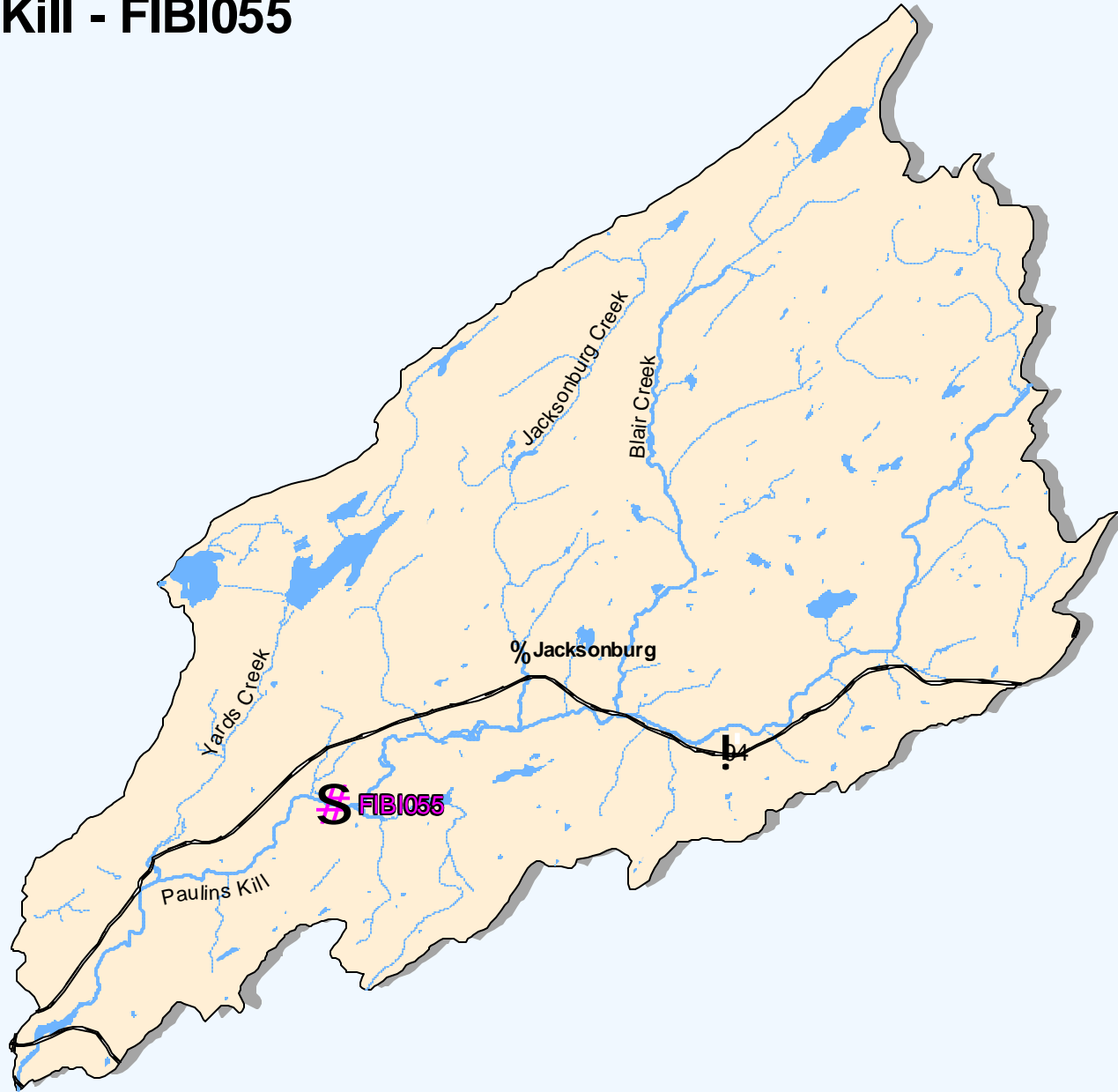



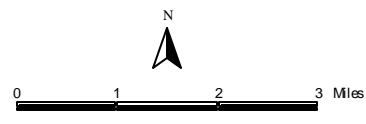


# Paulins Kill - FIBI055



-  FIBI Sampling Location
-  Small Streams (1st and 2nd Order)
-  Large Streams (3rd Order and Above)



# SUMMARY OF RESULTS

## FIBI055 - Paulins Kill



1. Stream Name:	Paulins Kill
2. Sampling Date:	08-21-2002
3. Sampling Location:	Vail Rd (40 58 00.35; -75 01 13.63)
4. Municipality:	Blairstown Twp.
5. County:	Warren
6. Watershed Management Area:	1
7. Contributing Drainage Area:	160.8 Square Miles
8. Electrofishing Gear:	2 Backpack
9. FIBI Score and Rating:	42 - Good
10. Habitat Score and Rating:	156 - Suboptimal
11. Fishable Species Present:	Yes
12. Relevant AMNET <sup>1</sup> Station Data	
Proximity of FIBI station to AMNET station:	AN0032A
AMNET Rating:	Round 1 – NA; Round 2 – NONE
13. Stream Chemistries	
Dissolved Oxygen:	9.38 mg/L
Temperature:	22.4 °C
pH:	8.77
Conductivity:	533 µmhos/cm
14. Number of Fish with Anomalies:	0
15. Length of Stream Segment Sampled:	150 Meters
16. Water Clarity:	Clear
17. Average Open Forest Canopy:	67.6%
18. Discharge:	73.8 ft. <sup>3</sup> /sec
19. Substrate:	35% Gravel and Sand, 45% Cobble, 15% Boulder, 5% Clay, 0% Silt
20. Habitat:	15% Riffle, 70% Run, 15% Pool
21. Snags;	Yes
22. Periphyton:	Slight
23. Submerged Aquatic Vegetation:	Yes
24. Other observations:	
25. Number of Fish Species Identified:	21
26. Total Number of Fish Collected:	199

<sup>1</sup> AMNET is the acronym for the DEP's ambient benthic macroinvertebrate monitoring network – a series of 820 monitoring stations located throughout the state's waterways that collects data on the health of bottom dwelling stream fauna which in turn is used to assess general water quality



FIBI055  
PAULINS KILL  
Vail Road  
Blairstown Township, Warren County

Vail Rd

Sipley Rd



0 0.1 Miles



LEGEND	
#	Start
#	Finish
—	Segment Sampled
Ⓜ	Direction of Flow

**FIBI055 - Paulins Kill @ Vail Road (off Route 94)**  
**Date Sampled - 8/21/2002**

Excellent **Good** Fair Poor

	<b>Score</b>
# of Fish Species	5
# of Benthic Insectivorous Species (BI)	5
# of Trout and Centrarchid Species (trout, bass, sunfish, crappie)	5
# of Intolerant Species (IS)	5
Proportion of Individuals as White Suckers	3
Proportion of Individuals as Generalists (carp, creek chub, banded killifish, goldfish, fathead minnow, green sunfish)	5
Proportion of Individuals as Insectivorous <b>Cyprinids</b> (I and BI)	1
Proportion of Individuals as Trout	*whichever gives better score
OR	
Proportion of Individuals as Piscivores (Excluding American Eel)*	5
Number of Individuals in Sample	3
Proportion of Individuals w/disease/anomalies (excluding blackspot)	5
Total	<b>42</b>

**Stream Rating**

**45-50      Excellent**  
**37-44      Good**  
**29-36      Fair**  
**10-28      Poor**



	Condition Category																				
	Optimal					Suboptimal					Marginal					Poor					
<b>1. Epifaunal Substrate /Available Cover</b>	Greater than 70% of substrate favorable for epifaunal colonization and fish cover; mix of snags, submerged logs, undercut banks, cobble or other stable habitat and at stage to allow full colonization potential (i.e., logs/snags that are <u>not</u> new fall and <u>not</u> transient).					40-70% mix of stable habitat; well-suited for full colonization potential; adequate habitat for maintenance of populations; presence of additional substrate in the form of newfall, but not yet prepared for colonization (may rate at high end of scale).					20-40% mix of stable habitat; habitat availability less than desirable; substrate frequently disturbed or removed.					Less than 20% stable habitat; lack of habitat is obvious; substrate unstable or lacking.					
<b>SCORE 18</b>	20	19	18	17	16	15	14	13	12	11	10	9	8	7	6	5	4	3	2	1	0
<b>2. Embeddedness</b>	Gravel, cobble, and boulder particles are 0-25% surrounded by fine sediment. Layering of cobble provides diversity of niche space					Gravel, cobble, and boulder particles are 25-50% surrounded by fine sediment.					Gravel, cobble, and boulder particles are 50-75% surrounded by fine sediment.					Gravel, cobble, and boulder particles are more than 75% surrounded by fine sediment.					
<b>SCORE 18</b>	20	19	18	17	16	15	14	13	12	11	10	9	8	7	6	5	4	3	2	1	0
<b>3. Velocity/Depth Regimes</b>	All 4 velocity/depth regimes present (slow-deep, slow-shallow, fast-deep, fast-shallow). (slow is <0.3 m/s, deep is >0.5 m)					Only 3 of the 4 regimes present (if fast-shallow is missing, score lower than if missing other regimes).					Only 2 of the 4 habitat regimes present (if fast-shallow or slow-shallow are missing, score low).					Dominated by 1 velocity / depth regime (usually slow-deep).					
<b>SCORE 18</b>	20	19	18	17	16	15	14	13	12	11	10	9	8	7	6	5	4	3	2	1	0
<b>4. Sediment Deposition</b>	Little or no enlargement of islands or point bars and less than 5% (<20% for low-gradient streams) of the bottom affected by sediment deposition.					Some new increase in bar formation, mostly from gravel, sand or fine sediment; 5-30% (20-50% for low-gradient) of the bottom affected; slight deposition in pools.					Moderate deposition of new gravel, sand or fine sediment on old and new bars; 30-50% (50-80% for low-gradient) of the bottom affected; sediment deposits at obstructions, constrictions, and bends; moderate deposition of pools prevalent.					Heavy deposits of fine material, increased bar development; more than 50% (80% for low-gradient) of the bottom changing frequently; pools almost absent due to substantial sediment deposition.					
<b>SCORE 17</b>	20	19	18	17	16	15	14	13	12	11	10	9	8	7	6	5	4	3	2	1	0
<b>5. Channel Flow Status</b>	Water reaches base of both lower banks, and minimal amount of channel substrate is exposed.					Water fills >75% of the available channel; or <25% of channel substrate is exposed.					Water fills 25-75% of the available channel, and/or riffle substrates are mostly exposed.					Very little water in channel and mostly present as standing pools.					
<b>SCORE 13</b>	20	19	18	17	16	15	14	13	12	11	10	9	8	7	6	5	4	3	2	1	0
<b>6. Channel Alteration</b>	Channelization or dredging absent or minimal; stream with normal pattern.					Some channelization present, usually in areas of bridge abutments; evidence of past channelization, i.e., dredging, (greater than past 20 yr) may be present, but recent channelization is not present.					Channelization may be extensive; embankments or shoring structures present on both banks; and 40 to 80% of stream reach channelized and disrupted.					Banks shored with gabion or cement; over 80% of the stream reach channelized and disrupted. In stream habitat greatly altered or removed entirely.					
<b>SCORE 19</b>	20	19	18	17	16	15	14	13	12	11	10	9	8	7	6	5	4	3	2	1	0
<b>7. Frequency of Riffles (or bends)</b>	Occurrence of riffles relatively frequent; ratio of distance between riffles divided by width of the stream <7:1 (generally 5 to 7); variety of habitat is key. In streams where riffles are continuous, placement of boulders or other large, natural obstruction is important.					Occurrence of riffles infrequent; distance between riffles divided by the width of the stream is between 7 to 15.					Occasional riffle or bend; bottom contours provide some habitat; distance between riffles divided by the width of the stream is between 15 to 25.					Generally all flat water or shallow riffles; poor habitat; distance between riffles divided by the width of the stream is a ratio of >25.					
<b>SCORE 14</b>	20	19	18	17	16	15	14	13	12	11	10	9	8	7	6	5	4	3	2	1	0
<b>8. Bank Stability (score each bank)</b> Note: determine left or right side by facing downstream.	Banks stable; evidence of erosion or bank failure absent or minimal; little potential for future problems. <5% of bank affected.					Moderately stable; infrequent, small areas of erosion mostly healed over. 5-30% of bank in reach has areas of erosion.					Moderately unstable; 30-60% of bank in reach has areas of erosion; high erosion potential during floods.					Unstable; many eroded areas; "raw" areas frequent along straight sections and bends; obvious bank sloughing; 60-100% of bank has erosional scars.					
SCORE <u>7</u> (LB)	Left	10	9			8	7	6			5	4	3			2	1	0			
SCORE <u>6</u> (RB)	Right	10	9			8	7	6			5	4	3			2	1	0			
<b>9. Bank Vegetative Protection (score each bank)</b>	More than 90% of the streambank surfaces and immediate riparian zone covered by native vegetation, including trees, under story shrubs, or nonwoody macrophytes; vegetative disruption through grazing or mowing minimal or not evident; almost all plants allowed to grow naturally.					70-90% of the streambank surfaces covered by native vegetation, but one class of plants is not well-represented; disruption evident but not affecting full plant growth potential to any great extent; more than one-half of the potential plant stubble height remaining.					50-70% of the streambank surfaces covered by vegetation; disruption obvious; patches of bare soil or closely cropped vegetation common; less than one-half of the potential plant stubble height remaining.					Less than 50% of the streambank surfaces covered by vegetation; disruption of streambank vegetation is very high; vegetation has been removed to 5 centimeters or less in average stubble height.					
SCORE <u>9</u> (LB)	Left	10	9			8	7	6			5	4	3			2	1	0			
SCORE <u>9</u> (RB)	Right	10	9			8	7	6			5	4	3			2	1	0			
<b>10. Riparian Vegetative Zone Width (score each bank riparian zone)</b>	Width of riparian zone >18 meters; human activities (i.e., parking lots, roadbeds, clear-cuts, lawns, or crops) have not impacted zone.					Width of riparian zone 12-18 meters; human activities have impacted zone only minimally.					Width of riparian zone 6-12 meters; human activities have impacted zone a great deal.					Width of riparian zone <6 meters; little or no riparian vegetation due to human activities.					
SCORE <u>4</u> (LB)	Left	10	9			8	7	6			5	4	3			2	1	0			
SCORE <u>4</u> (RB)	Right	10	9			8	7	6			5	4	3			2	1	0			

**HABITAT SCORE**

**156**

HABITAT SCORES	VALUE
OPTIMAL	160 – 200
SUB-OPTIMAL	110 – 159
MARGINAL	60 – 109
POOR	< 60

# FIBI055 08-21-2002

Paulins Kill

## LISTED IN ORDER OF ABUNDANCE FOUND

COMMON NAME	SCIENTIFIC NAME	# FOUND	SIZE RANGE (INCHES)
White Sucker*	<i>Catostomus commersoni</i>	32	
Bluegill*	<i>Lepomis macrochirus</i>	29	1.6-5.1
American Eel*	<i>Anguilla rostrata</i>	18	
Tessellated Darter	<i>Etheostoma olmstedii</i>	18	
Redbreast Sunfish*	<i>Lepomis auritus</i>	17	1.4-6.9
Rock Bass*	<i>Ambloplites rupestris</i>	16	3.1-8.1
Common Shiner	<i>Luxilus cornutus</i>	13	
Smallmouth Bass*	<i>Micropterus dolomieu</i>	10	2.2-7.5
Cutlips Minnow	<i>Exoglossum maxillingua</i>	9	
Margined Madtom	<i>Noturus insignis</i>	8	
Largemouth Bass*	<i>Micropterus salmoides</i>	5	2.4-7.3
Satinfin Shiner	<i>Cyprinella analostana</i>	5	
Longnose Dace	<i>Rhinichthys cataractae</i>	4	
Shield Darter	<i>Percina peltata</i>	4	
Fallfish	<i>Semotilus corporalis</i>	3	
Banded Killifish	<i>Fundulus diaphanus</i>	2	
Blacknose Dace	<i>Rhinichthys atratulus</i>	2	
Brown Trout*	<i>Salmo trutta</i>	1	8.3
Chain Pickerel*	<i>Esox niger</i>	1	5.3
Golden Shiner	<i>Notemigonus crysoleucas</i>	1	
Yellow Bullhead*	<i>Ameiurus natalis</i>	1	1.6

\* Regulated as a fishable species under current New Jersey Fish and Wildlife codes

**Species Identified at Paulins Kill (FIBI055)**  
(Not to Scale)

John Scarola



**Tessellated Darter**

Jenkins & Burkhead



**Satinfin Shiner**

AFS



**Largemouth Bass**

John Scarola



**Brown Trout**

John Scarola



**White Sucker**

John Scarola



**Blacknose Dace**

**Species Identified at Paulins Kill (FIBI055)**  
(Not to Scale)

John Scarola



**Redbreast Sunfish**

Schute



**Longnose Dace**

John Scarola



**Common Shiner**

John Scarola



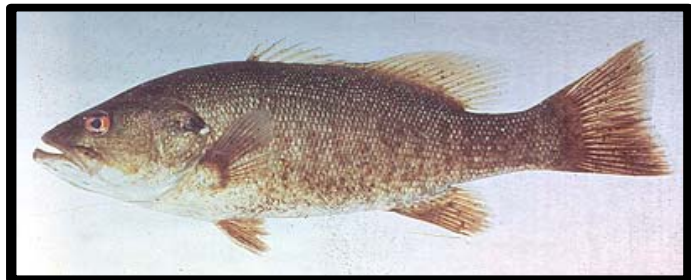
**American Eel**

John Scarola



**Bluegill**

John Scarola



**Smallmouth Bass**



**Species Identified at Paulins Kill (FIBI055)**  
(Not to Scale)

John Scarola



**Fallfish**

John Scarola



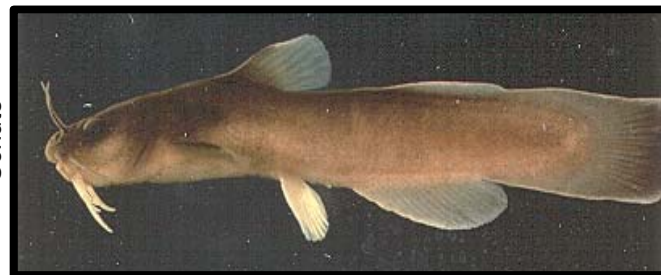
**Yellow Bullhead**

Jenkins & Burkhead



**Cutlips Minnow**

Schute



**Margined madtom**

John Scarola



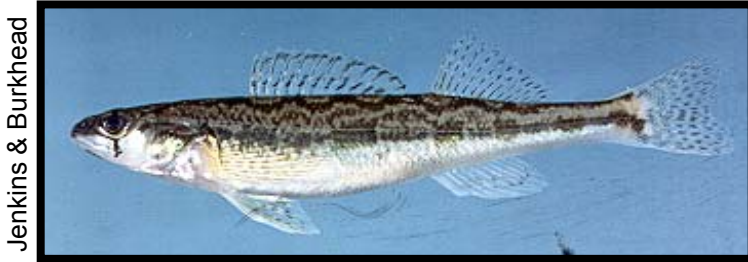
**Rockbass**

John Scarola



**Golden Shiner**

**Species Identified at Paulins Kill (FIBI055)**  
(Not to Scale)



Jenkins & Burkhead

**Shield Darter**



John Scarola

**Chain Pickerel**



John Scarola

**Banded Killifish**