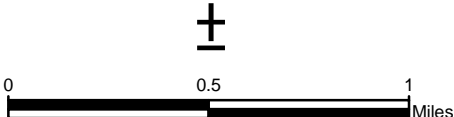
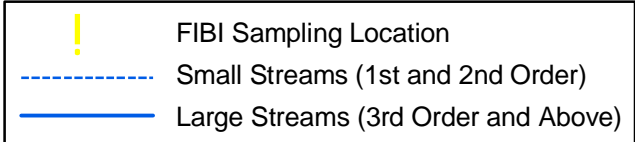
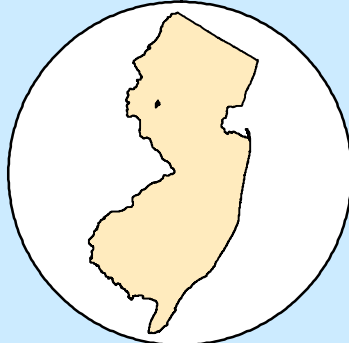
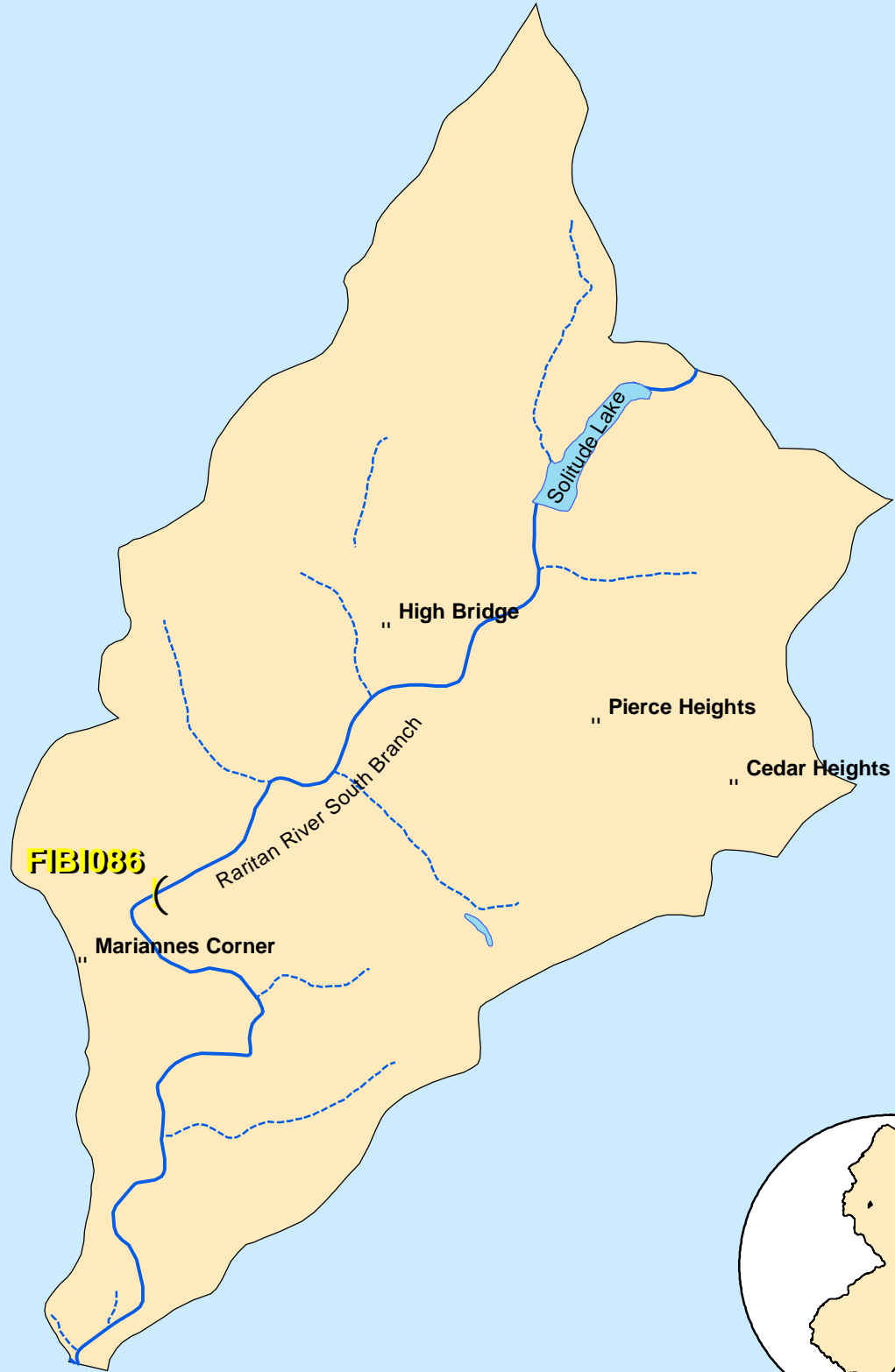
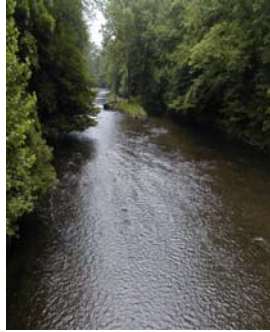


Raritan River South Branch - FIBI086



SUMMARY OF RESULTS

FIBI086 – Raritan River South Branch



1. Stream Name:	Raritan River South Branch
2. Sampling Date:	09-14-2004
3. Sampling Location:	Grayrock Road
4. Municipality:	Clinton
5. County:	Hunterdon
6. Watershed Management Area:	8
7. Contributing Drainage Area:	69.7 Square Miles
8. Electrofishing Gear:	2 Backpack
9. FIBI Score and Rating:	42 - Good
10. Habitat Score and Rating:	146- Sub-Optimal
11. Fishable Species Present:	Yes
12. Relevant AMNET ¹ Station Data:	
Proximity of FIBI station to AMNET station:	2.21 mi. upstream AN0322
AMNET Rating:	Round 1 – Non-impaired Round 2 – Non-impaired Round 3 – Non-impaired
13. Stream Chemistries:	
Dissolved Oxygen	8.55 mg/L
Temperature.	19.3 °C
pH	9.45
Conductivity	438 µmhos/cm
14. Number of Fish With Anomalies:	0
15. Length of Stream Segment Sampled	150 Meters
16. Water Clarity:	Clear
17. Average Forest Open Canopy:	72.3%
18. Discharge:	186.8 ft. ³ /sec
19. Substrate:	15% Gravel and Sand, 75% Cobble, 5% Boulder, 5% Silt
20. Habitat:	80% Riffle, 10% Run, 10% Pool
21. Snags	Yes
22. Periphyton	Slight
23. Submerged Aquatic Vegetation	Yes
24. Other observations:	
25. Number of Fish Species Identified:	16
26. Total Number of Fish Collected:	902

¹ AMNET is the acronym for the DEP's ambient benthic macroinvertebrate monitoring network – a series of 820 monitoring stations located throughout the state's waterways that collects data on the health of bottom dwelling stream fauna which in turn is used to assess general water quality.

FIBI086
RARITAN RIVER SOUTH BRANCH
Grayrock Road
Clinton Township, Hunterdon County



0 0.1 Miles

3

Legend

- ! Start
- ! Finish
- ↻ Direction of Flow
- Segment Sampled

FIBI086- @ Raritan River South Branch
Date Sampled - 9/14/2004

Excellent **Good** Fair Poor

	Score
# of Fish Species	5
# of Benthic Insectivorous Species (BI)	5
# of Trout and Centrarchid Species (trout, bass, sunfish, crappie)	3
# of Intolerant Species (IS)	5
Proportion of Individuals as White Suckers	3
Proportion of Individuals as Generalists (carp, creek chub, banded killifish, goldfish, fathead minnow, green sunfish)	5
Proportion of Individuals as Insectivorous Cyprinids (I and BI)	5
Proportion of Individuals as Trout OR Proportion of Individuals as Piscivores (Excluding American Eel)*	*whichever gives better score 1
Number of Individuals in Sample	5
Proportion of Individuals w/disease/anomalies (excluding blackspot)	5
Total	42

Stream Rating

45-50 **Excellent**
37-44 **Good**
29-36 **Fair**
10-28 **Poor**

HABITAT ASSESSMENT FOR HIGH GRADIENT STREAMS Raritan River SB (FIBI086) – 9/14/04

	Condition Category																				
	Optimal					Suboptimal					Marginal					Poor					
1. Epifaunal Substrate /Available Cover	Greater than 70% of substrate favorable for epifaunal colonization and fish cover; mix of snags, submerged logs, undercut banks, cobble or other stable habitat and at stage to allow full colonization potential (i.e., logs/snags that are <u>not</u> new fall and <u>not</u> transient).					40-70% mix of stable habitat; well-suited for full colonization potential; adequate habitat for maintenance of populations; presence of additional substrate in the form of newfall, but not yet prepared for colonization (may rate at high end of scale).					20-40% mix of stable habitat; habitat availability less than desirable; substrate frequently disturbed or removed.					Less than 20% stable habitat; lack of habitat is obvious; substrate unstable or lacking.					
SCORE 14	20	19	18	17	16	15	14	13	12	11	10	9	8	7	6	5	4	3	2	1	0
2. Embeddedness	Gravel, cobble, and boulder particles are 0-25% surrounded by fine sediment. Layering of cobble provides diversity of niche space					Gravel, cobble, and boulder particles are 25-50% surrounded by fine sediment.					Gravel, cobble, and boulder particles are 50-75% surrounded by fine sediment.					Gravel, cobble, and boulder particles are more than 75% surrounded by fine sediment.					
SCORE 14	20	19	18	17	16	15	14	13	12	11	10	9	8	7	6	5	4	3	2	1	0
3. Velocity/Depth Regimes	All 4 velocity/depth regimes present (slow-deep, slow-shallow, fast-deep, fast-shallow). (slow is <0.3 m/s, deep is >0.5 m)					Only 3 of the 4 regimes present (if fast-shallow is missing, score lower than if missing other regimes).					Only 2 of the 4 habitat regimes present (if fast-shallow or slow-shallow are missing, score low).					Dominated by 1 velocity / depth regime (usually slow-deep).					
SCORE 10	20	19	18	17	16	15	14	13	12	11	10	9	8	7	6	5	4	3	2	1	0
4. Sediment Deposition	Little or no enlargement of islands or point bars and less than 5% (<20% for low-gradient streams) of the bottom affected by sediment deposition.					Some new increase in bar formation, mostly from gravel, sand or fine sediment; 5-30% (20-50% for low-gradient) of the bottom affected; slight deposition in pools.					Moderate deposition of new gravel, sand or fine sediment on old and new bars; 30-50% (50-80% for low-gradient) of the bottom affected; sediment deposits at obstructions, constrictions, and bends; moderate deposition of pools prevalent.					Heavy deposits of fine material, increased bar development; more than 50% (80% for low-gradient) of the bottom changing frequently; pools almost absent due to substantial sediment deposition.					
SCORE 14	20	19	18	17	16	15	14	13	12	11	10	9	8	7	6	5	4	3	2	1	0
5. Channel Flow Status	Water reaches base of both lower banks, and minimal amount of channel substrate is exposed.					Water fills >75% of the available channel; or <25% of channel substrate is exposed.					Water fills 25-75% of the available channel, and/or riffle substrates are mostly exposed.					Very little water in channel and mostly present as standing pools.					
SCORE 19	20	19	18	17	16	15	14	13	12	11	10	9	8	7	6	5	4	3	2	1	0
6. Channel Alteration	Channelization or dredging absent or minimal; stream with normal pattern.					Some channelization present, usually in areas of bridge abutments; evidence of past channelization, i.e., dredging, (greater than past 20 yr) may be present, but recent channelization is not present.					Channelization may be extensive; embankments or shoring structures present on both banks; and 40 to 80% of stream reach channelized and disrupted.					Banks shored with gabion or cement; over 80% of the stream reach channelized and disrupted. In stream habitat greatly altered or removed entirely.					
SCORE 15	20	19	18	17	16	15	14	13	12	11	10	9	8	7	6	5	4	3	2	1	0
7. Frequency of Riffles (or bends)	Occurrence of riffles relatively frequent; ratio of distance between riffles divided by width of the stream <7:1 (generally 5 to 7); variety of habitat is key. In streams where riffles are continuous, placement of boulders or other large, natural obstruction is important.					Occurrence of riffles infrequent; distance between riffles divided by the width of the stream is between 7 to 15.					Occasional riffle or bend; bottom contours provide some habitat; distance between riffles divided by the width of the stream is between 15 to 25.					Generally all flat water or shallow riffles; poor habitat; distance between riffles divided by the width of the stream is a ratio of >25.					
SCORE 19	20	19	18	17	16	15	14	13	12	11	10	9	8	7	6	5	4	3	2	1	0
8. Bank Stability (score each bank) Note: determine left or right side by facing downstream.	Banks stable; evidence of erosion or bank failure absent or minimal; little potential for future problems. <5% of bank affected.					Moderately stable; infrequent, small areas of erosion mostly healed over. 5-30% of bank in reach has areas of erosion.					Moderately unstable; 30-60% of bank in reach has areas of erosion; high erosion potential during floods.					Unstable; many eroded areas; "raw" areas frequent along straight sections and bends; obvious bank sloughing; 60-100% of bank has erosional scars.					
SCORE <u>7</u> (LB)	Left	10	9			8	7	6			5	4	3			2	1	0			
SCORE 8 (RB)	Right	10	9			8	7	6			5	4	3			2	1	0			
9. Bank Vegetative Protection (score each bank)	More than 90% of the streambank surfaces and immediate riparian zone covered by native vegetation, including trees, under story shrubs, or nonwoody macrophytes; vegetative disruption through grazing or mowing minimal or not evident; almost all plants allowed to grow naturally.					70-90% of the streambank surfaces covered by native vegetation, but one class of plants is not well-represented; disruption evident but not affecting full plant growth potential to any great extent; more than one-half of the potential plant stubble height remaining.					50-70% of the streambank surfaces covered by vegetation; disruption obvious; patches of bare soil or closely cropped vegetation common; less than one-half of the potential plant stubble height remaining.					Less than 50% of the streambank surfaces covered by vegetation; disruption of streambank vegetation is very high; vegetation has been removed to 5 centimeters or less in average stubble height.					
SCORE <u>9</u> (LB)	Left	10	9			8	7	6			5	4	3			2	1	0			
SCORE 6 (RB)	Right	10	9			8	7	6			5	4	3			2	1	0			
10. Riparian Vegetative Zone Width (score each bank riparian zone)	Width of riparian zone >18 meters; human activities (i.e., parking lots, roadbeds, clear-cuts, lawns, or crops) have not impacted zone.					Width of riparian zone 12-18 meters; human activities have impacted zone only minimally.					Width of riparian zone 6-12 meters; human activities have impacted zone a great deal.					Width of riparian zone <6 meters; little or no riparian vegetation due to human activities.					
SCORE <u>10</u> (LB)	Left	10	9			8	7	6			5	4	3			2	1	0			
SCORE 1 (RB)	Right	10	9			8	7	6			5	4	3			2	1	0			

HABITAT SCORE

146

HABITAT SCORES	VALUE
OPTIMAL	160 – 200
SUB-OPTIMAL	110 – 159
MARGINAL	60 – 109
POOR	< 60

FIBI086

09-14-2004

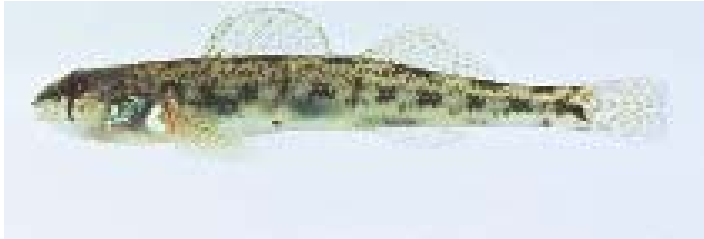
Raritan River South Branch

LISTED IN ORDER OF ABUNDANCE

COMMON NAME	SCIENTIFIC NAME	# FOUND	SIZE RANGE (INCHES)
Tessellated Darter	<i>Etheostoma olmstedii</i>	309	
Longnose Dace	<i>Rhinichthys cataractae</i>	271	
Blacknose Dace	<i>Rhinichthys atratulus</i>	109	
White Sucker	<i>Catostomus commersoni</i>	98	
Margined Madtom	<i>Noturus insignis</i>	46	
Spottail Shiner	<i>Notropis hudsonius</i>	27	
American Eel	<i>Anguilla rostrata</i>	15	
Cutlips Minnow	<i>Exoglossum maxillingua</i>	8	
Banded Killifish	<i>Fundulus diaphanus</i>	5	
Brown Trout	<i>Salmo trutta</i>	5	3.5 – 9.8
Smallmouth Bass	<i>Micropterus dolomieu</i>	4	2.8 – 4.5
Creek Chub	<i>Semotilus atromaculatus</i>	1	
Eastern Mudminnow	<i>Umbra pygmaea</i>	1	
Redbreast Sunfish	<i>Lepomis auritus</i>	1	3.5
Redfin Pickerel	<i>Esox americanus americanus</i>	1	3.9
Yellow Bullhead	<i>Ameiurus natalis</i>	1	2.4

Species Identified at Raritan River S.B. (FIBI086)
(Not to Scale)

John Scarola



Tessellated Darter

John Scarola



Longnose Dace

John Scarola



Blacknose Dace

John Scarola



White Sucker

Shute



Margined Madtom

Konrad Schmidt



Spottail Shiner

Species Identified at Raritan River S.B. (FIBI086)
(Not to Scale)

John Scarola



American Eel

Jenkins, Burkhead



Cutlips Minnow

John Scarola



Banded Killifish

John Scarola



Brown Trout

John Scarola



Smallmouth Bass

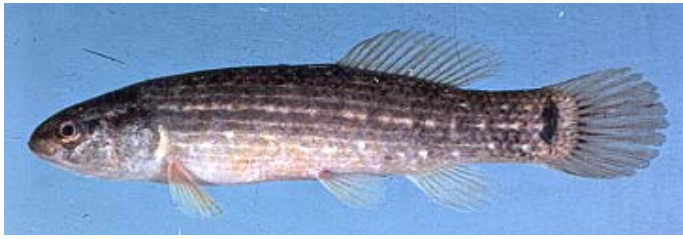
Konrad Schmidt



Creek Chub

Species Identified at Raritan River S.B. (FIBI086)
(Not to Scale)

Jenkins, Burkhead



Eastern Mudminnow

John Scarola



Redbreast Sunfish

Jenkins, Burkhead



Redfin Pickerel

John Scarola



Yellow Bullhead