



State of New Jersey

DEPARTMENT OF ENVIRONMENTAL PROTECTION

OFFICE OF THE COMMISSIONER

401 East State Street

P.O. Box 402, Mail Code 401-07

Trenton, New Jersey 08625-0420

Tel. (609) 292-2885 • Fax (609) 292-7695

www.nj.gov/dep

PHILIP D. MURPHY

Governor

SHEILA Y. OLIVER

Lt. Governor

SHAWN M. LATOURETTE

Commissioner

Public Notice of the Suspension of Harvest from Shellfish Beds Dangerous to Health

The Department of Environmental Protection (Department) routinely monitors water quality in shellfish growing areas throughout New Jersey to ensure the wholesomeness of shellfish intended for human consumption. Analysis of water samples indicates that the waters in the areas of Double Creek, Forked River, Oyster Creek and Little Egg Harbor - Channel Cove to Mud Cove no longer meet their current shellfish growing water classifications as set forth in the Shellfish Growing Water Classification rules at N.J.A.C. 7:12, https://www.nj.gov/dep/rules/rules/njac7_12.pdf.

TAKE NOTICE, that pursuant to N.J.A.C. 7:12-1.4(b) and the statutory authority granted the Department at N.J.S.A. 58:24-2 to protect the public health from the risk posed by the consumption of shellfish that may have been subjected to pollution or other conditions that may render the shellfish dangerous to health, I hereby immediately suspend the harvest of shellfish from the following waters, as further described below:

Double Creek (52.7 acres)

Forked River (108.2 acres)

Oyster Creek (65.7 acres)


Little Egg Harbor - Channel Cove to Mud Cove (175.2 acres)

In accordance with N.J.A.C. 7:12-1.3, the waters in the aforementioned areas are classified as either *Approved* (Little Egg Harbor – Channel Cove to Mud Cove) or *Restricted* (Double Creek, Forked River, and Oyster Creek). To be classified as *Approved*, the bacteriological quality of water samples at every sample station in the growing area shall not exceed the fecal coliform median or geometric mean of 14 colony-forming units (CFU) per 100 milliliters (ml) and the estimated 90th percentile shall not exceed 31 CFU per 100 ml. To be classified as *Restricted*, the bacteriological quality of water samples at every sample station in the growing area shall not exceed the fecal coliform median or geometric mean of 88 CFU per 100 ml and the estimated 90th percentile shall not exceed 163 CFU per 100 ml. For more information on shellfish growing water classifications please see the National Shellfish Sanitation Program (NSSP), Guide for the Control of Molluscan Shellfish, 2019 Revision, incorporated by reference at N.J.A.C. 7:12-1.3(a) and available at the U.S. Food and Drug Administration website:

<https://www.fda.gov/food/federalstate-food-programs/national-shellfish-sanitation-program-nssp>.

Water sampling data collected by the Department over the past three to four years indicate that the water samples from the waters in the aforementioned areas do not consistently meet the fecal coliform standards for *Approved* and *Restricted* waters. The suspension of harvest shall take effect immediately and continue pending the establishment by rulemaking of the appropriate classification and boundaries of the waters as *Prohibited*, *Restricted*, *Conditionally Restricted*, *Conditionally Approved* or *Approved*, as provided by N.J.A.C. 7:12-1.4(b), or until further determination by the Department that the area of water subject to the suspension meets the standards for its current classification.

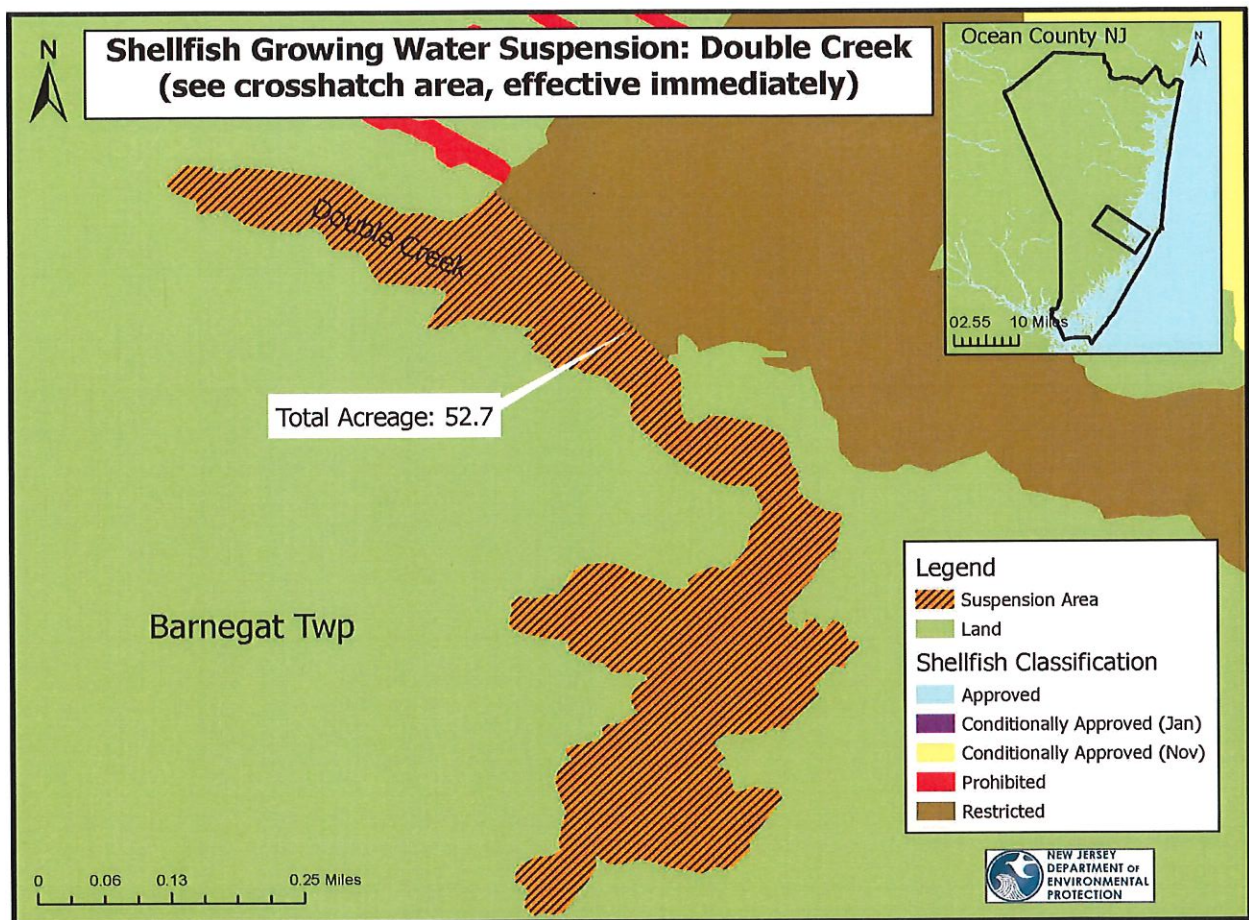
Date: 3/2/2023


Robert Schuster, Chief
Bureau of Marine Water Monitoring



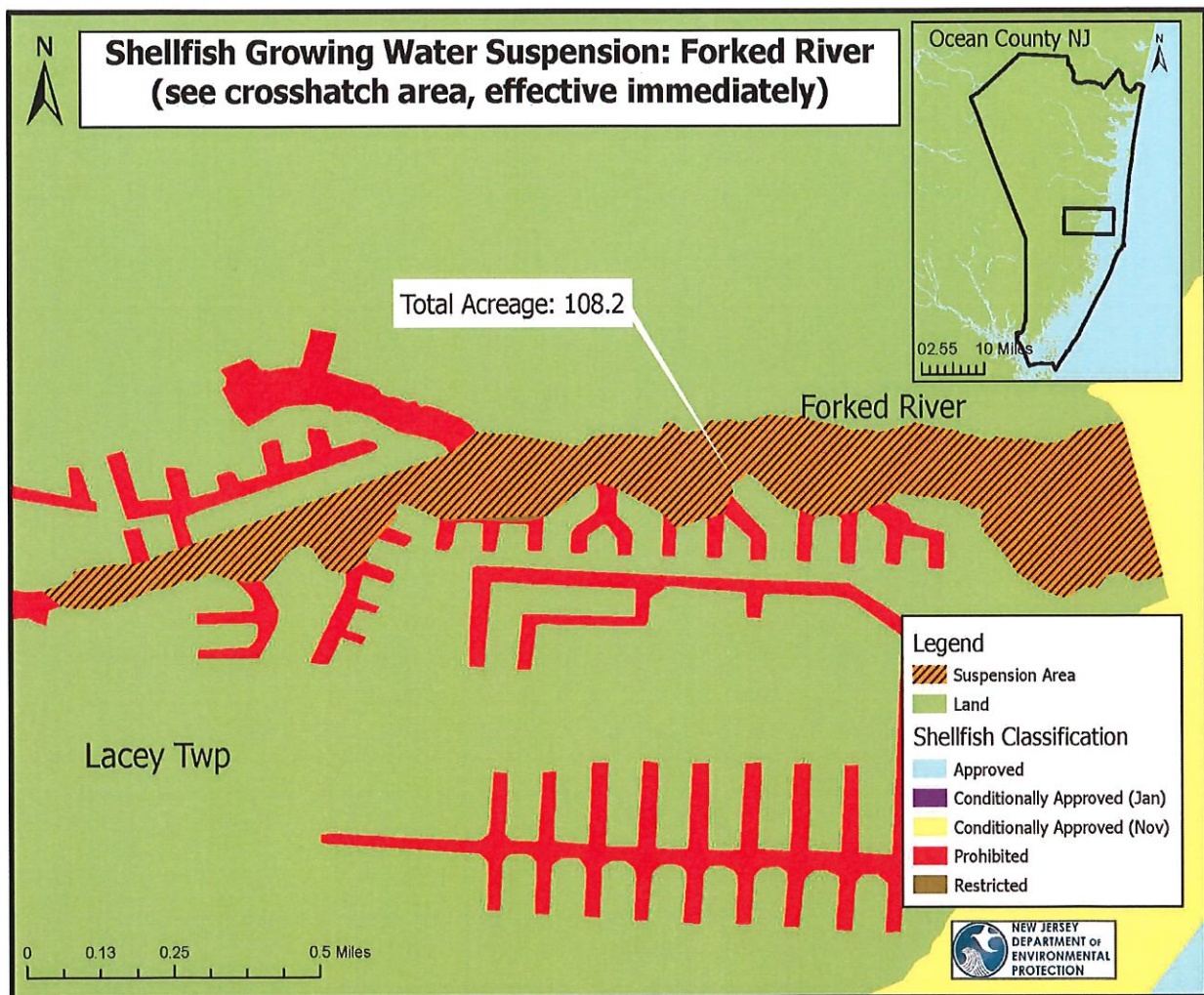
Double Creek (52.7 acres)

All waters enclosed in an area beginning at a point of coordinates latitude 39.745887 N and longitude 74.196345 W moving along the shoreline in a south westerly direction to a point of coordinates latitude 39.746572 and longitude 74.200895 W moving across the waterway in a south westerly direction to a point of coordinates 39.746404 N and longitude 74.201271 W moving along the shoreline in a south easterly direction to a point of coordinates latitude 39.743419 N and longitude 74.194043 W moving across the waterway in a north westerly direction to the point of origin and terminating.



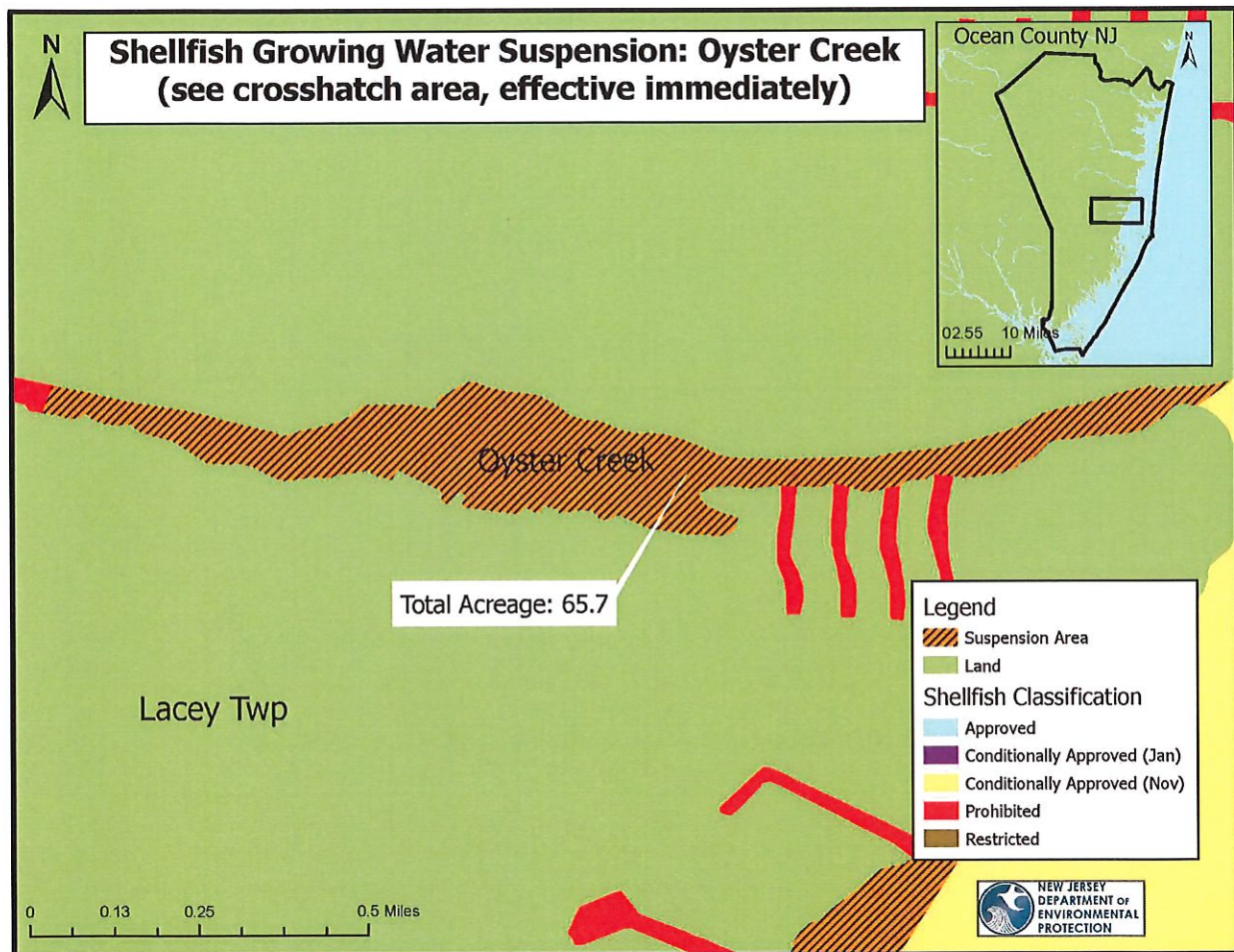
Forked River (108.2 acres)

All waters of Forked River enclosed in an area beginning at a point of coordinates latitude 39.827427 N and longitude 74.161278 W moving along the shoreline in a westerly direction crossing over any creeks, tributaries and lagoons to a point of coordinates latitude 39.823425 N and longitude 74.18719 W moving across the waterway in a south easterly direction to a point of coordinates latitude 39.82306 N and longitude 74.186776 W moving along the shoreline in an easterly direction crossing over any creeks, tributaries and lagoons to a point of coordinates latitude 39.823101 N and longitude 74.160495 W moving across the waterway in a north westerly direction to the point of origin and terminating.



Oyster Creek (65.7 acres)

All waters enclosed in an area beginning at a point of coordinates latitude 39.811594 N and longitude 74.170164 W moving along the shoreline in a south westerly direction to a point of coordinates latitude 39.811415 N and longitude 74.199628 W moving across the waterway in a southerly direction to a point of coordinates latitude 39.811064 N and longitude 74.199557 W moving along the shoreline in an easterly direction crossing over any creeks, tributaries and lagoons to a point of coordinates latitude 39.810834 N and longitude 74.170898 W moving across the waterway in a north easterly direction to the point of origin and terminating.



Little Egg Harbor - Channel Cove to Mud Cove (175.2 acres)

All waters enclosed in an area beginning at a point of coordinates latitude 39.6476699 N and longitude 74.2338339 W moving along the shoreline in a north westerly direction to a point of coordinates latitude 39.644611 N and longitude 74.239486 W moving across the waterway in a south westerly direction to a point of coordinates latitude 39.633037 N and longitude 74.251066 W moving along the shoreline in a south westerly direction to a point of coordinates latitude 39.6272539 N and longitude 74.2534675 W moving across the waterway in a north easterly direction to the point of origin and terminating.

