



# State of New Jersey

## DEPARTMENT OF ENVIRONMENTAL PROTECTION

### DIVISION OF WATER MONITORING, STANDARDS AND PESTICIDE CONTROL

401 East State Street

P.O. Box 420, Mail Code 401-041

Trenton, New Jersey 08625-0420

Tel. (609) 292-1623 • Fax (609) 633-1276

[www.nj.gov/dep](http://www.nj.gov/dep)

**PHILIP D. MURPHY**

*Governor*

**SHAWN M. LATOURETTE**

*Commissioner*

**SHEILA Y. OLIVER**

*Lt. Governor*

## **Public Notice of the Suspension of Harvest from Shellfish Beds Dangerous to Health**

The Department of Environmental Protection (Department) routinely monitors water quality in shellfish growing areas throughout New Jersey to ensure the wholesomeness of shellfish intended for human consumption. Analysis of water samples indicate that certain waters in the area of Stake Thorofare, Lakes Bay, Leonard Thorofare and Cat Run, Townsend Channel, Unnamed Creek off Townsend Channel, Grassy Sound, Great Sound / Holmes Cove, Richardson Sound, Ludlam Bay, and Reed Bay no longer meet their current shellfish growing water classifications as set forth in the Shellfish Growing Water Classification rules at N.J.A.C. 7:12 ([https://www.nj.gov/dep/rules/rules/njac7\\_12.pdf](https://www.nj.gov/dep/rules/rules/njac7_12.pdf)).

**TAKE NOTICE**, that pursuant to N.J.A.C. 7:12-1.4(b) and the statutory authority granted the Department at N.J.S.A. 58:24-2 to protect the public health from the risk posed by the consumption of shellfish that may have been subjected to pollution or other conditions that may render the shellfish dangerous to health, I hereby immediately suspend the harvest of shellfish from the following waters, as further described below:

***Stake Thorofare (52.8 acres)***

***Lakes Bay (1,829.5 acres)***

***Leonard Thorofare and Cat Run (81.2 acres)***

***Townsend Channel (50.0 acres)***

***Unnamed Creek off Townsend Channel (2.1 acres)***

***Grassy Sound (520.2 acres)***

***Great Sound / Holmes Cove (19.7 acres)***

***East Side of Richardson Sound (125.9 acres)***

***East Side of Ludlam Bay (264.3 acres)***

***Reed Bay (96.1 acres)***

In accordance with N.J.A.C. 7:12-1.3, the waters in the afore mentioned areas are classified as *Approved*, *Conditionally Approved*, or *Restricted*. To be classified as *Approved*, the bacteriological quality of water samples at every sample station in the growing area shall not exceed the fecal coliform median or geometric mean of 14 colony-forming units (CFU) per 100 milliliters (ml) and the estimated 90<sup>th</sup> percentile shall not exceed 31 CFU per 100 ml. To be classified as *Conditionally Approved*, the bacteriological quality of water samples shall meet the *Approved* criteria during the time period of November 1 through April 30 and shall meet the *Restricted* criteria during the time period of May 1 through October 31. To be classified as *Restricted*, the bacteriological quality of water samples at every sample station in the growing

area shall not exceed the fecal coliform median or geometric mean of 88 CFU per 100 ml and the estimated 90<sup>th</sup> percentile shall not exceed 163 CFU per 100 ml. For more information on shellfish growing water classifications please see the National Shellfish Sanitation Program (NSSP), Guide for the Control of Molluscan Shellfish, incorporated by reference at N.J.A.C. 7:12-1.3(a) and available at the U.S. Food and Drug Administration website: <https://www.fda.gov/food/federalstate-food-programs/national-shellfish-sanitation-program-nssp>.

Water sampling data collected and analyzed by the Department indicate that certain shellfish growing waters in the aforementioned areas do not consistently meet the fecal coliform standards for *Approved, Conditionally Approved, or Restricted* waters.

The suspension of harvest shall take effect immediately and continue pending the establishment by rulemaking of the appropriate classification and boundaries of the waters so classified, as provided by N.J.A.C. 7:12-1.4, or until further determination by the Department that the area of water subject to the suspension meets the standards for its current classification.

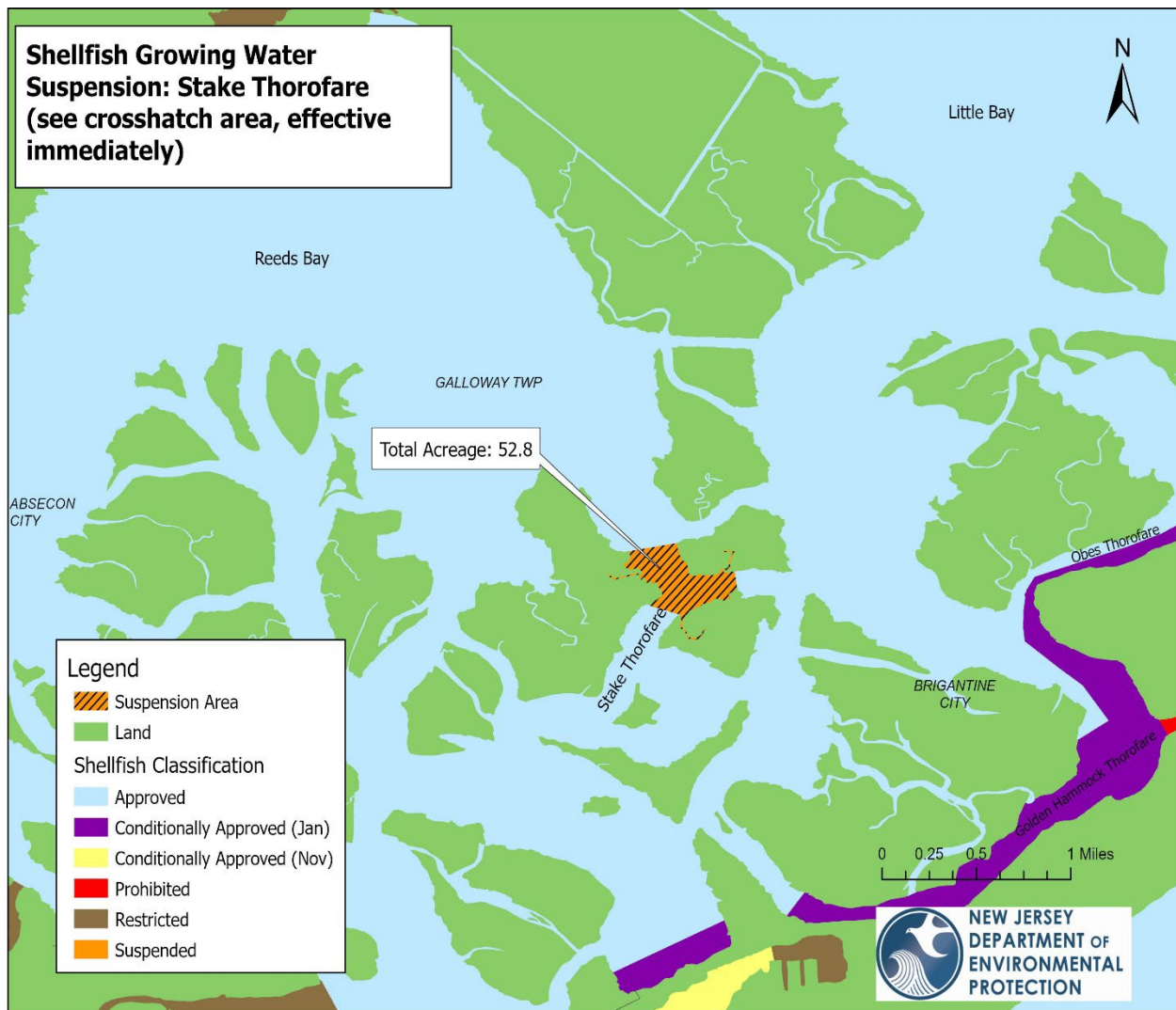
**Date:** 5/4/22

*Bruce Friedman*

Bruce Friedman, Director  
Division of Water Monitoring, Standards &  
Pesticide Control

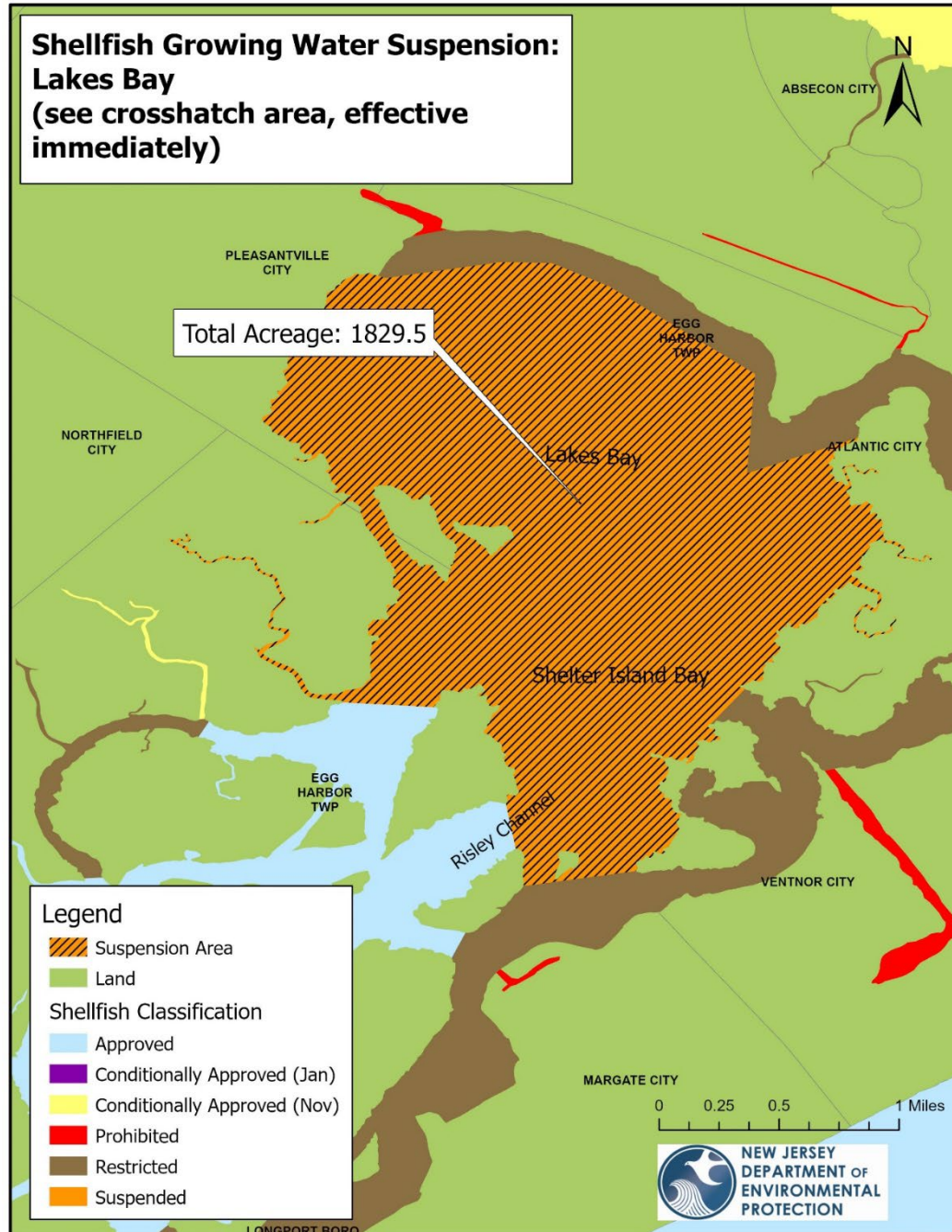
**Stake Thorofare Area (52.8 acres)**

All waters enclosed in an area beginning at a point of coordinates latitude 39.420418 N. and longitude 74.41463 W. moving across the waterway in an easterly direction to a point of coordinates 39.421006 N. and longitude 74.410785 W. moving along the shoreline in a southerly direction to a point of coordinates latitude 39.419075 N. and longitude 74.406491 W. moving across the waterway in a southerly direction to a point of coordinates latitude 39.41783 N. and longitude 74.406273 W. moving along the shoreline in a westerly direction to a point of coordinates latitude 39.416042 N. and longitude 74.410637 W. moving across the waterway in a north westerly direction to a point of coordinates latitude 39.416787 N. and longitude 74.413457 W. moving along the shoreline in a north easterly direction to the point of origin and terminating.



**Lakes Bay (1829.5 acres)**

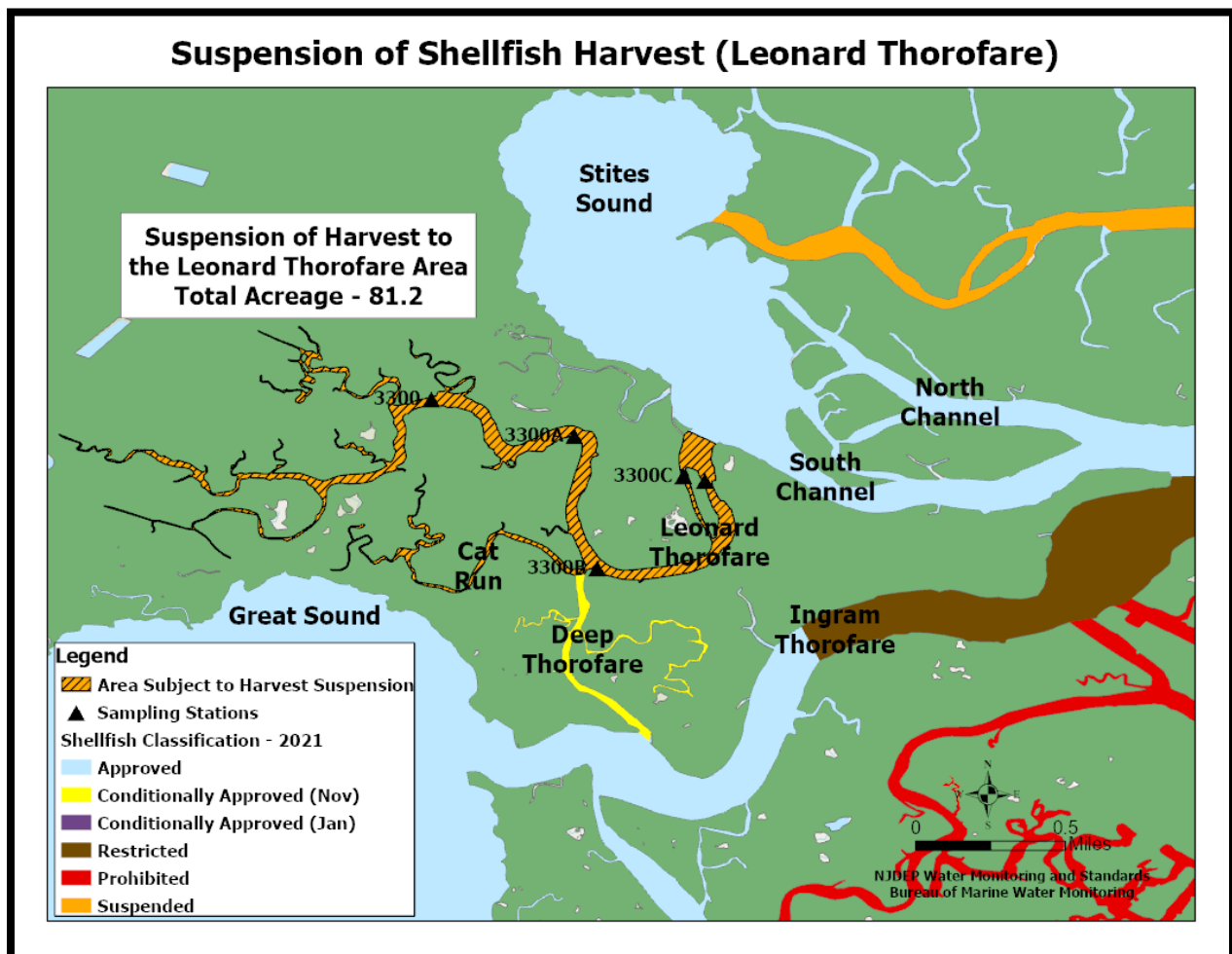
All waters enclosed in an area beginning at a point of coordinates latitude 39.381878 N. and longitude 74.519228 W. moving along the shoreline in a westerly direction to a point of coordinates latitude 39.356084 N. and longitude 74.521221 W. moving across the waterway in an easterly direction to a point of coordinates latitude 39.355795 N. and longitude 74.515781 W. moving along the shoreline in a north easterly direction to a point of coordinates latitude 39.349995 N. and longitude 74.51143 W. moving across the waterway in a south easterly direction to a point of coordinates latitude 39.347255 N. and longitude 74.510829 W. moving along the shoreline in an easterly direction to a point of coordinates latitude 39.345007 N. and longitude 74.510358 W. moving across the waterway in a north easterly direction to a point of coordinates latitude 39.34591 N. and longitude 74.503592 W. moving along the shoreline in a northerly direction to a point of coordinates latitude 39.349119 N. and longitude 74.500902 W. moving across the waterway in a north westerly direction to a point of coordinates latitude 39.349999 N. and longitude 74.501329 W. moving along the shoreline in a northerly direction to a point of coordinates latitude 39.354741 N. and longitude 74.498644 W. moving across the waterway in a north easterly direction to a point of coordinates latitude 39.356906 N. and longitude 74.496926 W. moving along the shoreline in a westerly direction to a point of coordinates latitude 39.372105 N. and longitude 74.490032 W. moving across the waterway in a south westerly direction to a point of coordinates latitude 39.369899 N. and longitude 74.496895 W. moving across the waterway in a northerly direction to a point of coordinates latitude 39.3759 N. and longitude 74.496415 W. moving across the waterway in a north westerly direction to a point of coordinates latitude 39.381197 N. and longitude 74.505247 W. moving across the waterway in a north westerly direction to a point of coordinates latitude 39.382577 N. and longitude 74.508647 W. moving across the waterway in a westerly direction to a point of coordinates latitude 39.382643 and longitude 74.511718 W. moving across the waterway in a south westerly direction to a point of coordinates latitude 39.381671 N. and longitude 74.518684 W. moving across the waterway in a north westerly direction to the point of origin and terminating.





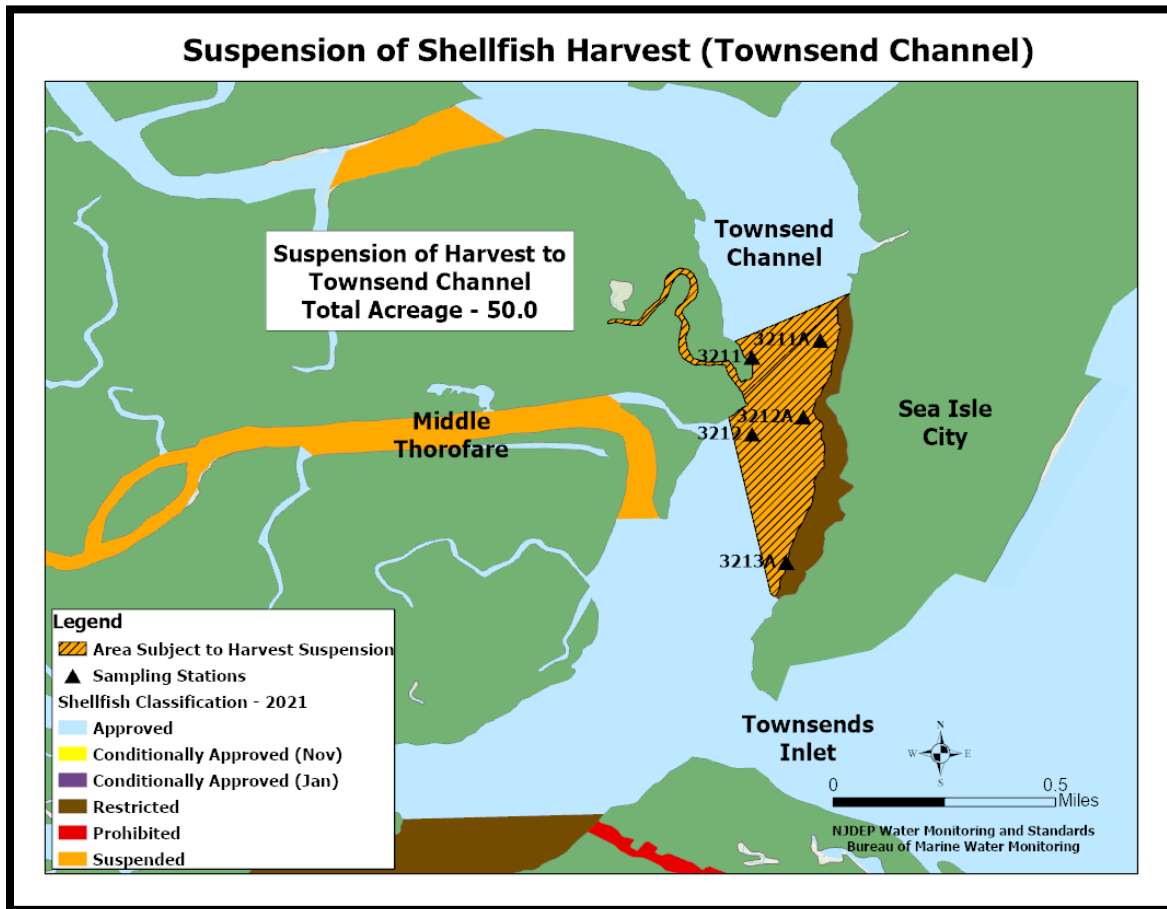
### Leonard Thorofare and Cat Run (81.2 acres)

All of Leonard Thorofare and Cat Run and their tributaries south of a line beginning from a point on the west shore of the mouth of Leonard Thorofare with coordinates of latitude 39.117594 N., longitude 74.751376 W., then proceeding in a southeast direction across the mouth of Leonard Thorofare to a point on the east shore of Leonard Thorofare with coordinates of latitude 39.117089 N., longitude 74.749825 W. and including all of its waters, including all of the waters of Cat Run and terminating.



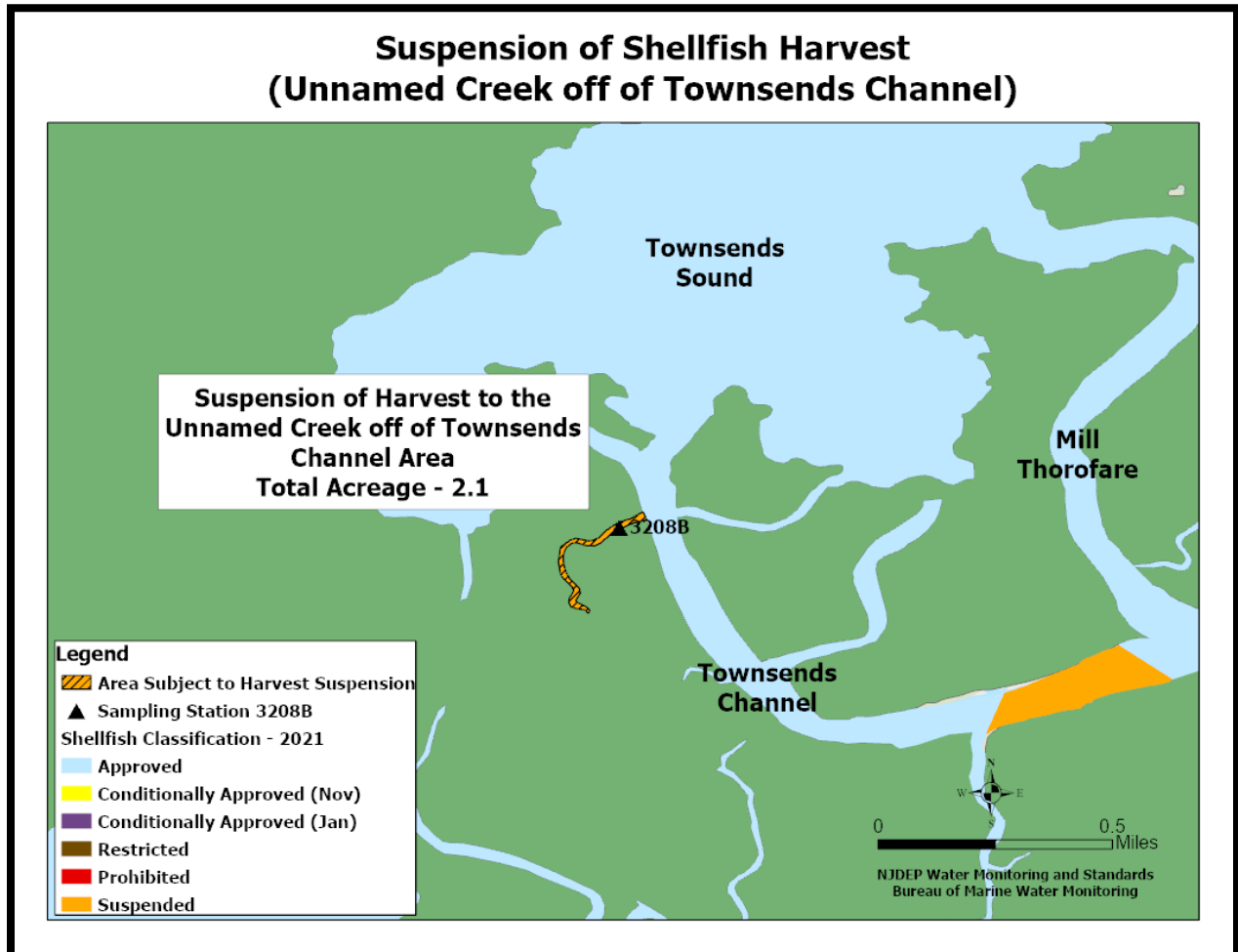
### **Townsend Channel (50.0 acres)**

The area of Townsend Channel adjacent to the town of Sea Isle City contained within a line beginning at a point on the shoreline at latitude 39.132713 N., longitude 74.713374 W. and bearing southwest to a point on the western shoreline of Townsend Channel at latitude 39.131154 N., longitude 74.717111 W. then following the shoreline south and northwest into an unnamed creek, including the creek and its tributaries, then southwest to a point at the mouth of Middle Thorofare at latitude 39.128669 N., longitude 74.717303 W., then bearing southeast to a point in Townsend Channel at latitude 39.122931 N., longitude 74.715936 W., then to a point near the shoreline of Sea Isle City at latitude 39.122751 N., longitude 74.715681 W., then in a northeast direction, connecting the western end of the longest piers, back to the point of origin and terminating.



**Unnamed Creek off of Townsends Channel (2.1 acres)**

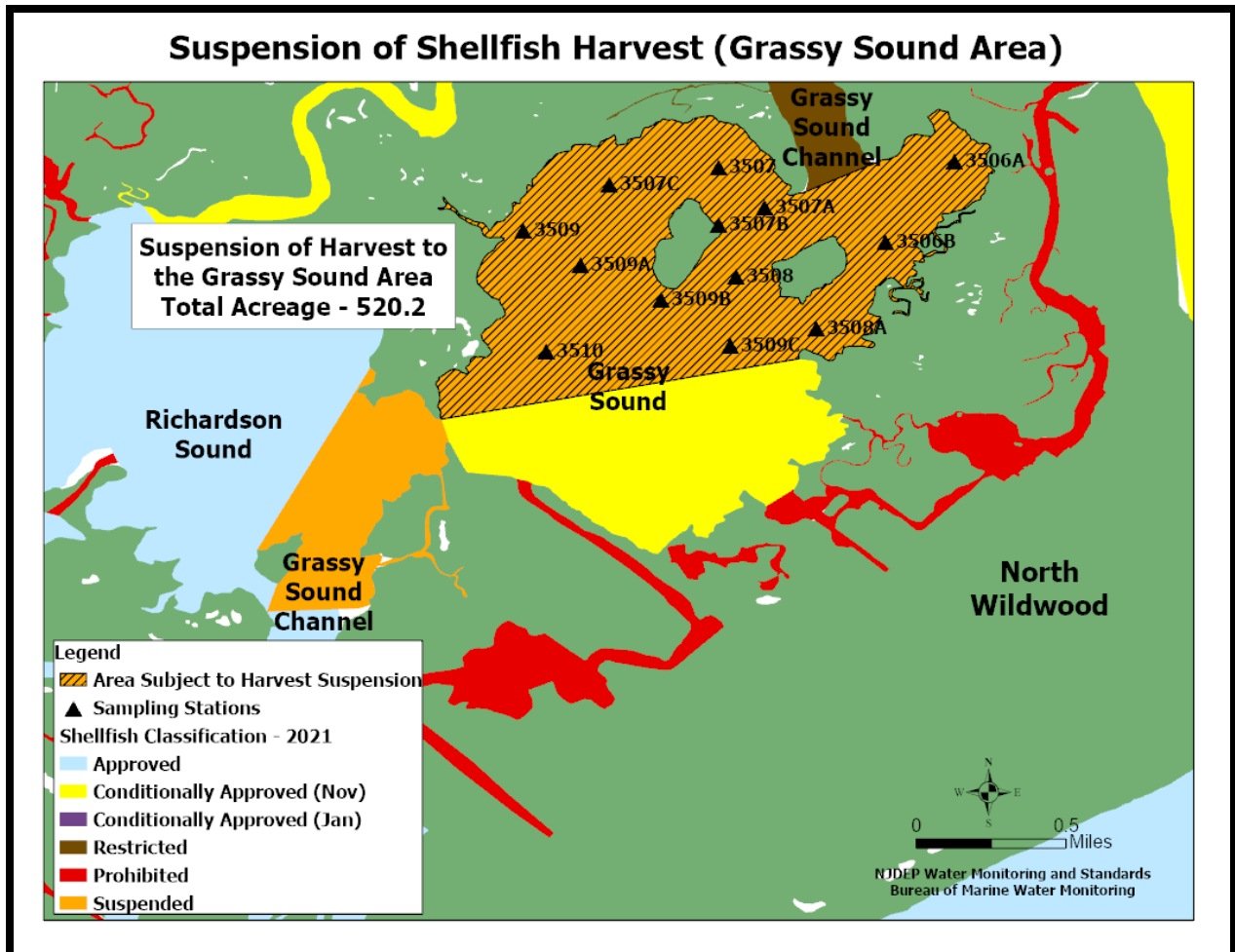
All of the waters of an unnamed creek and its tributaries southwest of a line beginning from a point on the north shore of the mouth of the unnamed creek at Townsends Channel with coordinates of latitude 39.142938 N., longitude 74.740891 W., then proceeding in a southeast direction across the mouth of the unnamed creek to a point on the south shore of the unnamed creek at Townsends Channel with coordinates of latitude 39.142691 N., longitude 74.740786 W. and terminating.





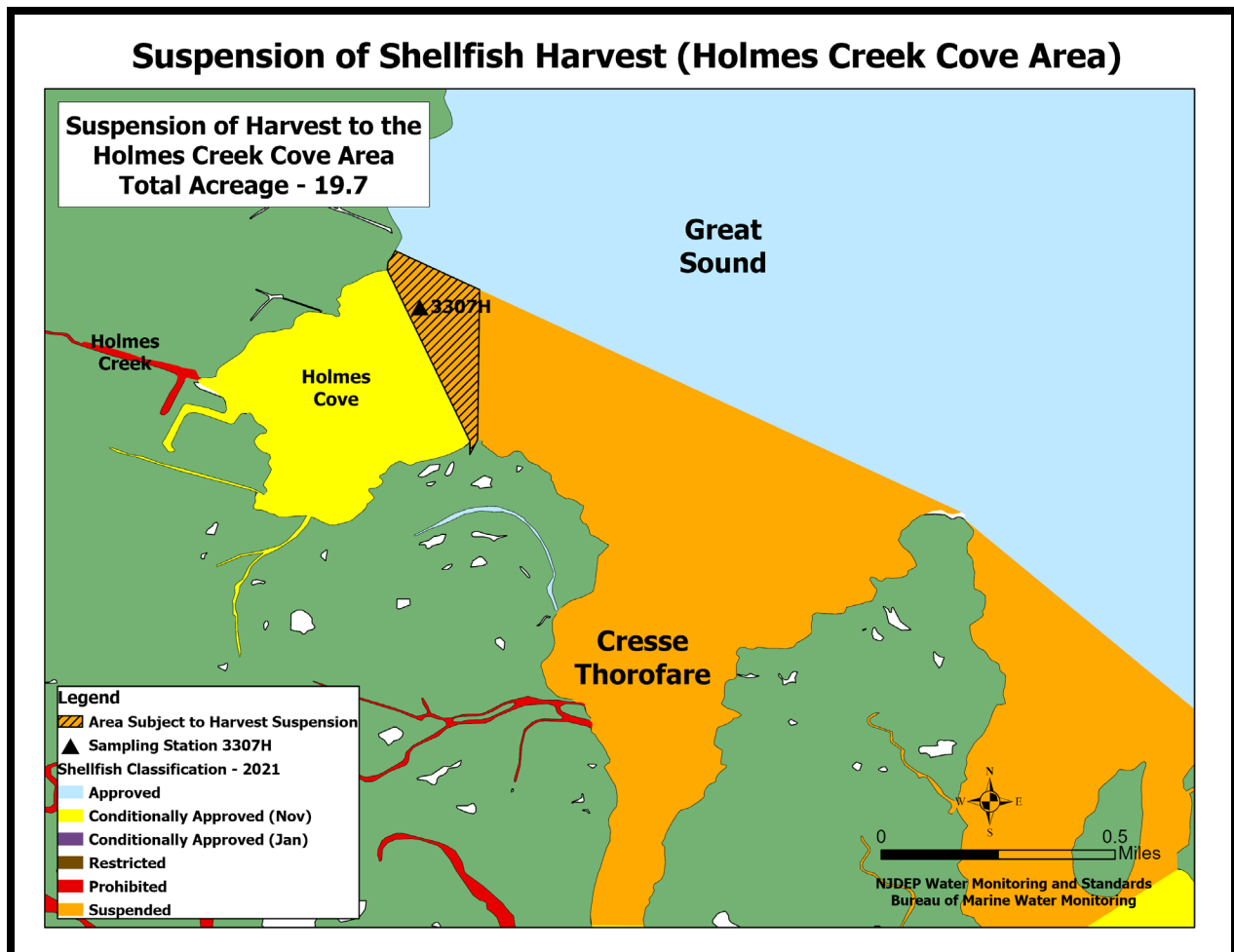
### Grassy Sound (520.2 acres)

All of Grassy Sound north of a line starting at the north (Hann Point) side of the railroad bridge west of West Wildwood at latitude 39.008173 N., longitude 74.829666 W., then bearing northeast to a point at Grassy Point at latitude 39.011092 N., longitude 74.812372 W. and terminating, and south of a line in the northeast side of Grassy Sound from a point on the eastern shore of the mouth of Grassy Sound Channel at latitude 39.020865 N., longitude 74.808128 W., then bearing southwest to a point on the western shore of the mouth of Grassy Sound Channel at latitude 39.019226 N., longitude 74.812299 W. and terminating.



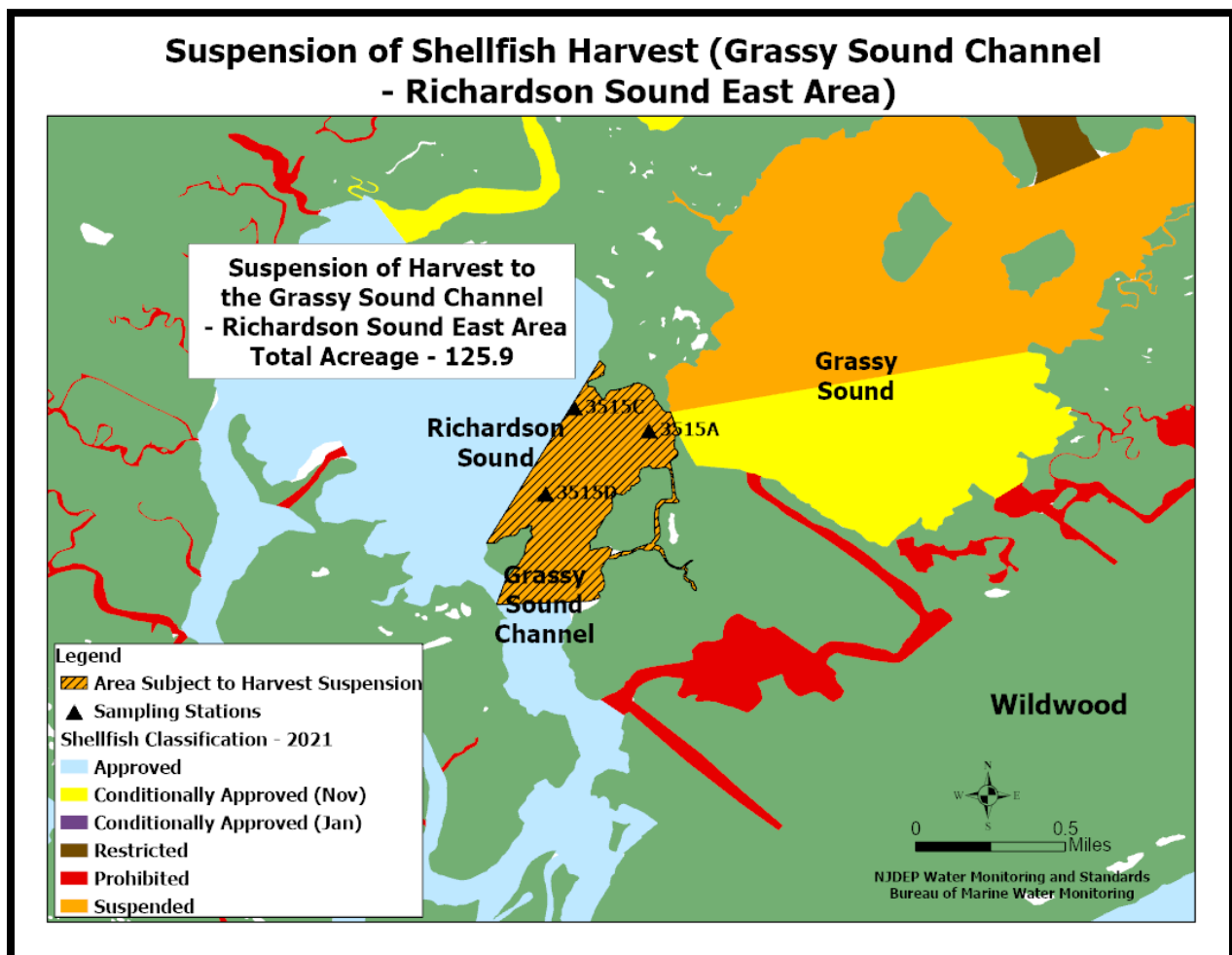
### Great Sound / Holmes Cove (19.7 acres)

All of the waters of Great Sound and Holmes Creek Cove starting from a point northeast of Holmes Creek Cove at latitude 39.090621 N., longitude 74.788883 W., then bearing northwest to a point in Great Sound at latitude 39.095352 N., longitude 74.788590 W., the bearing northeast to a point on the western shoreline of Great Sound at latitude 39.096637 N., longitude 74.791374 W., then in a southwesterly direction to a point on the northwest shoreline of Holmes Creek Cove at latitude 39.095982 N., longitude 74.791432 W., then bearing southeast back to the point of origin and terminating.



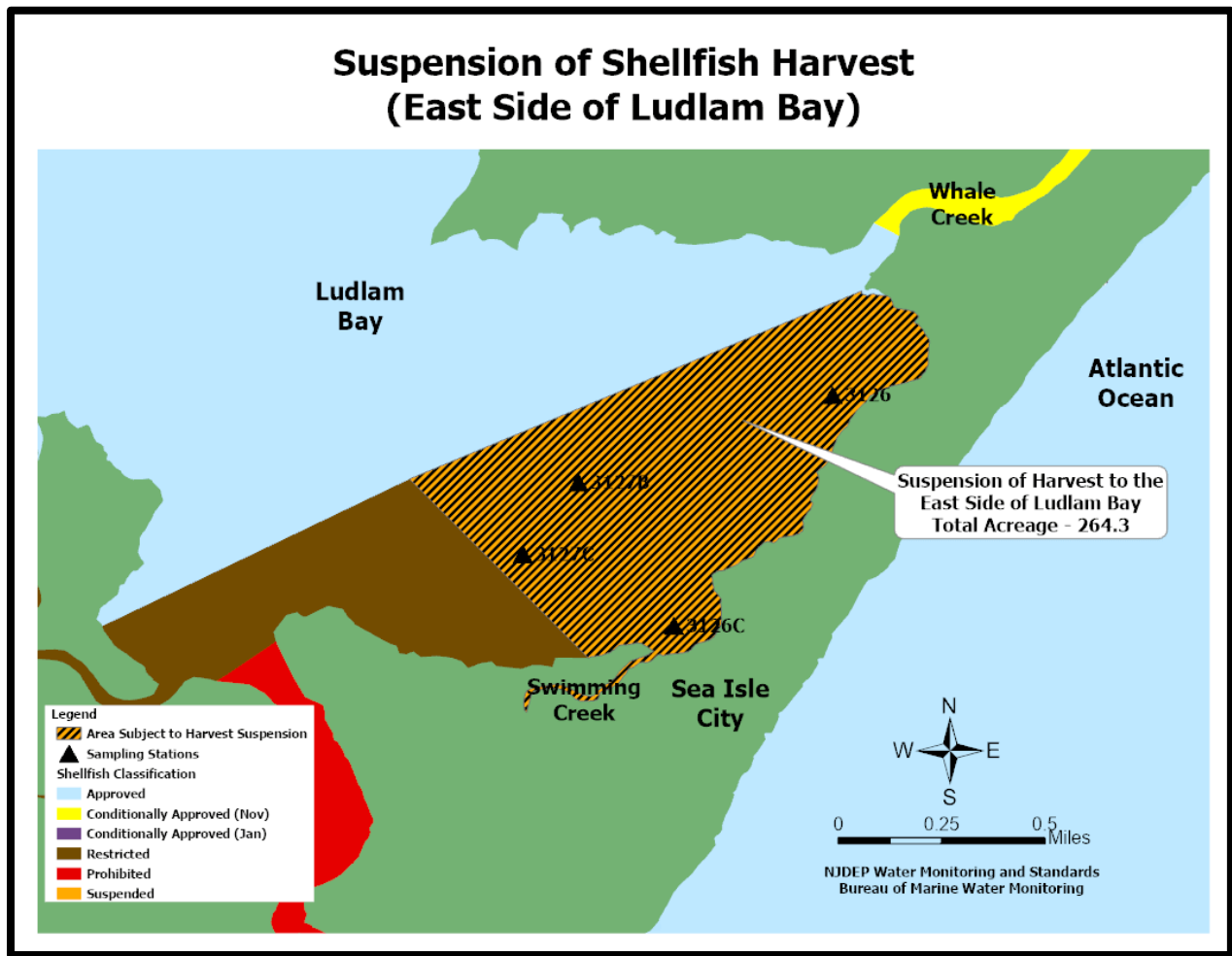
**East Side Richardson Sound (125.9 acres)**

All of the Grassy Sound Channel and the east side of Richardson Sound starting at a point on the eastern shoreline of Grassy Sound Channel at latitude 38.999381 N., longitude 74.832825 W., then bearing southwest and then west to a point on the western shoreline of Grassy Sound Channel at latitude 38.998873 N., longitude 74.838092 W., then bearing northeast to a point on an unnamed island at latitude 39.000234 N., longitude 74.837593 W., then along the shoreline northeast and southwest to a point on the west side of the unnamed island at latitude 39.001850 N., longitude 74.838575 W., then bearing northeast to a point on the shoreline northeast of Richardson Sound at latitude 39.010654 N., longitude 74.833110 W., then along the shoreline southeast to a point at the north (Hann Point) side of the railroad bridge west of West Wildwood at latitude 39.008173 N., longitude 74.829666 W., then bearing southeast to a point on the south side of the railroad bridge at latitude 39.007158 N., longitude 74.829337 W., then southwest along the shoreline back to the point of origin and terminating.



**East Side of Ludlam Bay (264.3 acres)**

That portion of Ludlam Bay lying north and east of a line beginning at a point at Latitude 39 degrees 10 minutes 3.36 seconds N., Longitude 74 degrees 41 minutes 20.40 seconds W. on the shoreline of the barrier island southwest of the mouth of Swimming Creek and bearing approximately 322 degrees T to a point at Latitude 39 degrees 10 minutes 25.73 seconds N., 74 degrees 41 minutes 42.83 seconds W. near the Intracoastal Waterway, then bearing approximately 242.0 degrees T to a point southeast of the mouth of Whale Creek at Latitude 39 degrees 10 minutes 49.47 seconds N., Longitude 74 degrees 40 minutes 45.92 seconds W., then in a southeasterly direction along the shoreline, excluding all tributaries but Swimming Creek, back to the point of origin and terminating.



**Reed Bay (96.1 acres)**

All waters west of a line beginning at a point of latitude 39.448221 N. and longitude 74.454024 W. moving across the waterway in a south westerly direction to a point of latitude 39.431706 N. and longitude 74.463653 W. and terminating.

