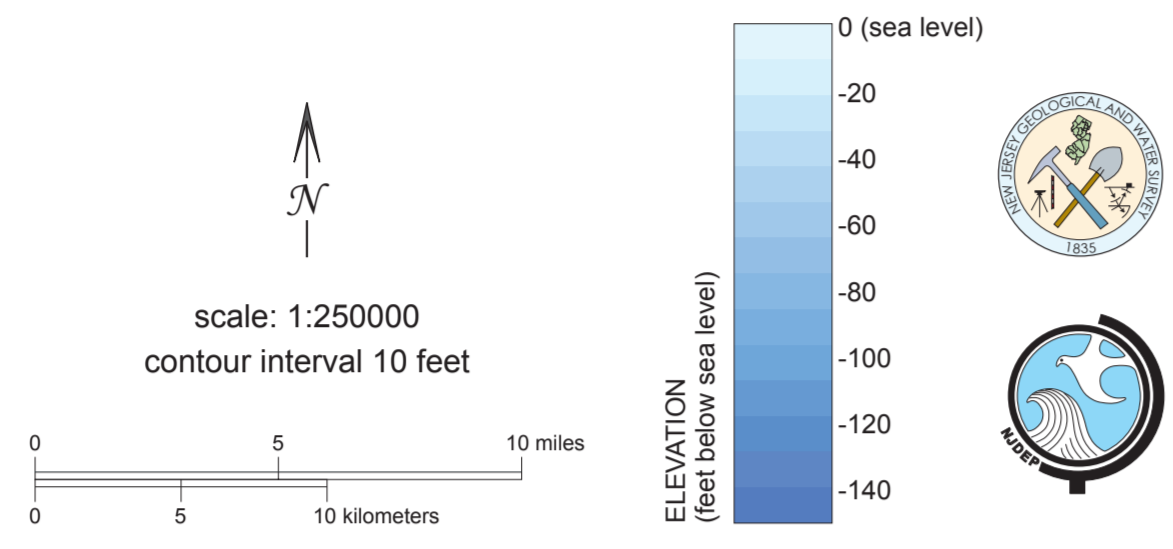


**SIGNIFICANT SAND RESOURCE AREAS
IN STATE AND FEDERAL WATERS
OFFSHORE NEW JERSEY, 2012**

EXPLANATION

- NJGWS-delimited sand resource area
- USACE-delimited sand resource area
- USACE/NJDEP-designated borrow area
- USACE/NJDEP designated future borrow area
- Three-mile limit



REFERENCES

Meisburger, E.D., and Williams, S.J., 1980, Sand resources on the Inner Continental Shelf of the Cape May Region, New Jersey: U.S. Army Corps of Engineers, Coastal Engineering Research Center, Miscellaneous Report 80-4, 40 p.

_____, 1982, Sand resources on the Inner Continental Shelf off the central New Jersey coast: U.S. Army Corps of Engineers, Coastal Engineering Research Center, Miscellaneous Report 82-10, 48 p.

Smith, P.C., 1996, Nearshore ridges and underlying Pleistocene sediments of the inner continental shelf of New Jersey: U.S. Dept. of Interior, Minerals Management Service Cooperative Agreements No. 14-35-0001-30666 and 14-35-0001-30751, Rutgers University, New Brunswick, N.J., 157 p.

U.S. Army Corps of Engineers, 1989, General Design Memorandum, Atlantic Coast of New Jersey, Sandt GHook to Barnegat Inlet Beach Erosion control Project Section I - Sea Bright to Ocean Township, New Jersey, Volume 2, Technical Appendices: New York, N.Y., Appendix C: Borrow Area Investigations, p. C-1 to C-12.

_____, 1993, General Design Memorandum, Atlantic Coast of New Jersey, Sandy Hook to Barnegat Inlet Beach Erosion Control Project Section II - Asbury Park to Manasquan, N.J., Volume 2, Technical Appendices: New York, N.Y., Appendix C: Borrow Area Investigations, p. C-1 to C-19.

Williams, S.J., and Duane, D.B., 1974, Geomorphology and sediments of the Inner New York Bight Continental Shelf: U.S. Army Corps of Engineers, Coastal Engineering Research Center, Technical Memorandum No. 45, 81 p.

This map is unpublished data on file at NJGWS. Users must assume responsibility to determine the appropriate use of this map. NJGWS must be referenced in any subsequent use. NJGWS assumes no responsibility for any changes to, or analysis resulting from, the original distributed map.

