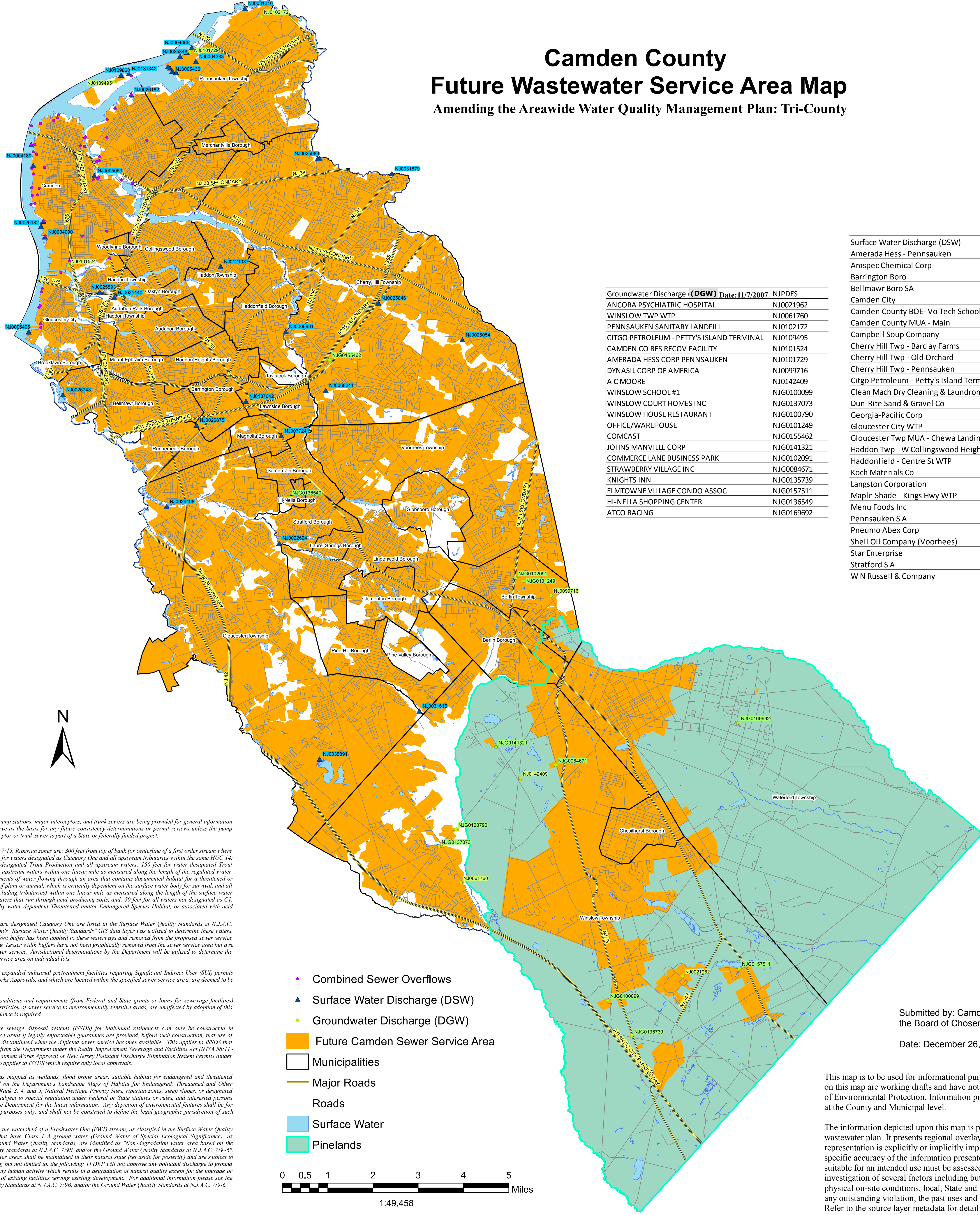


Camden County Future Wastewater Service Area Map

Amending the Areawide Water Quality Management Plan: Tri-County



Groundwater Discharge (DGW) Date: 11/7/2007	NJPDES
ANCORA PSYCHIATRIC HOSPITAL	NJ0021962
WINSLOW TWP WTP	NJ0061760
PENNSAUKEN SANITARY LANDFILL	NJ0102172
CITGO PETROLEUM - PETTY'S ISLAND TERMINAL	NJ0109495
CAMDEN CO RES RECOV FACILITY	NJ0101524
AMERADA HESS CORP PENNSAUKEN	NJ0101729
DYNASIL CORP OF AMERICA	NJ0099716
A C MOORE	NJ0142409
WINSLOW SCHOOL #1	NJG0100099
WINSLOW COURT HOMES INC	NJG0137073
WINSLOW HOUSE RESTAURANT	NJG0100790
OFFICE/WAREHOUSE	NJG0101249
COMCAST	NJG0155462
JOHNS MANVILLE CORP	NJG0141321
COMMERCE LANE BUSINESS PARK	NJG0102091
STRAWBERRY VILLAGE INC	NJG0084671
KNIGHTS INN	NJG0135739
ELMTOWNE VILLAGE CONDO ASSOC	NJG0157511
HI-NELLA SHOPPING CENTER	NJG0136549
ATCO RACING	NJG0169692

Surface Water Discharge (DSW)	NJPDES
Amerada Hess - Pennsauken	NJ0004383
Amspec Chemical Corp	NJ0005495
Barrington Boro	NJ0026875
Bellmawr Boro SA	NJ0026743
Camden City	NJ0004189
Camden County BOE- Vo Tech School	NJ0031615
Camden County MUA - Main	NJ0026182
Campbell Soup Company	NJ0005053
Cherry Hill Twp - Barclay Farms	NJ0025046
Cherry Hill Twp - Old Orchard	NJ0025054
Cherry Hill Twp - Pennsauken	NJ0025089
Citgo Petroleum - Petty's Island Terminal	NJ0131342
Clean Mach Dry Cleaning & Laundromat	NJ0137642
Dun-Rite Sand & Gravel Co	NJ0035891
Georgia-Pacific Corp	NJ0004669
Gloucester City WTP	NJ0025593
Gloucester Twp MUA - Chewa Landing	NJ0026468
Haddon Twp - W Collingswood Heights	NJ0021440
Haddonfield - Centre St WTP	NJ0066931
Koch Materials Co	NJ0109860
Langston Corporation	NJ0068241
Maple Shade - Kings Hwy WTP	NJ0031879
Menu Foods Inc	NJ0031216
Pennsauken S A	NJ0025348
Pneumo Abex Corp	NJ0004090
Shell Oil Company (Voorhees)	NJ0077241
Star Enterprise	NJ0005436
Stratford S A	NJ0022624
W N Russell & Company	NJ0121037

Locations of future pump stations, major interceptors, and trunk sewers are being provided for general information only and will not serve as the basis for any future consistency determinations or permit reviews unless the pump station, major interceptor or trunk sewer is part of a State or federally funded project.

Pursuant to N.J.A.C. 7:15, Riparian zones are: 300 feet from top of bank (or centerline of a first order stream where no bank is apparent) for waters designated as Category One and all upstream tributaries within the same HUC; 14; 150 feet for waters designated Trout Production and all upstream waters; 150 feet for water designated Trout Maintenance and all upstream waters within one linear mile as measured along the length of the regulated water; 150 feet for any segments of water flowing through an area that contains documented habitat for a threatened or endangered species of plant or animal, which is critically dependent on the surface water body for survival, and all upstream waters (including tributaries) within one linear mile as measured along the length of the surface water body; 150 feet for waters that run through acid-producing soils, and; 50 feet for all waters not designated as C1, trout waters, critically water dependent Threatened and/or Endangered Species Habitat, or associated with acid soils.

Surface waters that are designated Category One are listed in the Surface Water Quality Standards at N.J.A.C. 7:9B. The Department's "Surface Water Quality Standards" GIS data layer was utilized to determine these waters. The applicable 300 foot buffer has been applied to these waterways and removed from the proposed sewer service areas on the mapping. Lesser width buffers have not been graphically removed from the sewer service area but are not proposed for sewer service. Jurisdictional determinations by the Department will be utilized to determine the extent of the sewer service area on individual lots.

All existing, new, or expanded industrial pretreatment facilities requiring Significant Indirect User (SIU) permits and/or Treatment Works Approvals, and which are located within the specified sewer service area, are deemed to be consistent.

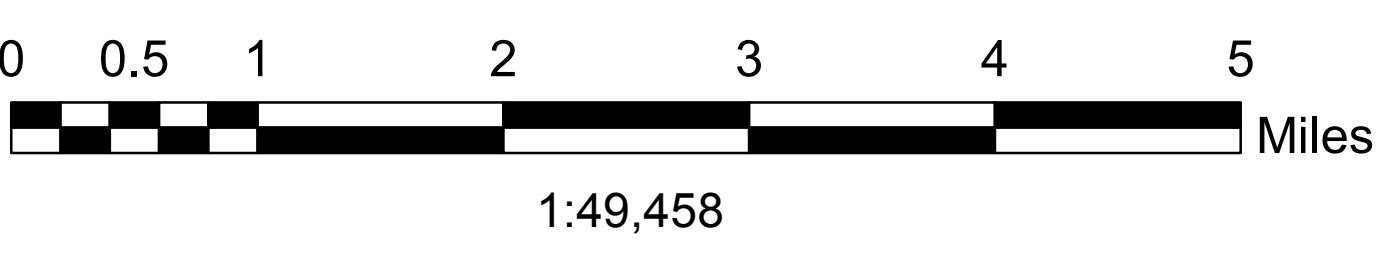
Pre-existing grant conditions and requirements (from Federal and State grants or loans for sewerage facilities) which provide for restriction of sewer service to environmentally sensitive areas, are unaffected by adoption of this document and compliance is required.

Individual subsurface sewage disposal systems (ISSDS) for individual residences can only be constructed in depicted sewer service areas if legally enforceable guarantees are provided, before such construction, that use of such systems will be discontinued when the depicted sewer service becomes available. This applies to ISSDS that require certification from the Department under the Realty Improvement Sewerage and Facilities Act (N.J.S.A. 58:11-23) or individual Treatment Works Approval or New Jersey Pollutant Discharge Elimination System Permits (under N.J.A.C. 7:14A). It also applies to ISSDS which require only local approvals.

Development in areas mapped as wetlands, flood prone areas, suitable habitat for endangered and threatened species as identified on the Department's Landscape Maps of Habitat for Endangered, Threatened and Other Priority Wildlife as Rank 3, 4, and 5, Natural Heritage Priority Sites, riparian zones, steep slopes, or designated river areas may be subject to special regulation under Federal or State statutes or rules, and interested persons should check with the Department for the latest information. Any depiction of environmental features shall be for general information purposes only, and shall not be construed to define the legal geographic jurisdiction of such statutes or rules.

Areas located within the watershed of a Freshwater One (FW1) stream, as classified in the Surface Water Quality Standards, and/or that have Class 1-A ground water (Ground Water of Special Ecological Significance), as classified in the Ground Water Quality Standards, are identified as "Non-degradation water area based on the Surface Water Quality Standards at N.J.A.C. 7:9B, and/or the Ground Water Quality Standards at N.J.A.C. 7:9-6". Non-degradation water areas shall be maintained in their natural state (set aside for posterity) and are subject to restrictions including, but not limited to, the following: 1) DEP will not approve any pollutant discharge to ground water nor approve any human activity which results in a degradation of natural quality except for the upgrade or continued operation of existing facilities serving existing development. For additional information please see the Surface Water Quality Standards at N.J.A.C. 7:9B, and/or the Ground Water Quality Standards at N.J.A.C. 7:9-6.

- Combined Sewer Overflows
- ▲ Surface Water Discharge (DSW)
- Groundwater Discharge (DGW)
- Future Camden Sewer Service Area
- Municipalities
- Major Roads
- Roads
- Surface Water
- Pinelands



Submitted by: Camden County MUA on the behalf of the Board of Chosen Freeholders of Camden County
Date: December 26, 2012

This map is to be used for informational purposes only. The sewer service areas depicted on this map are working drafts and have not been adopted by the New Jersey Department of Environmental Protection. Information presented may need additional quality control at the County and Municipal level.

The information depicted upon this map is presented for the conceptual development of a wastewater plan. It presents regional overlays which are not site specific. No representation is explicitly or implicitly implied by this representation as to the site-specific accuracy of the information presented. The condition of any area appearing suitable for an intended use must be assessed by a comprehensive due diligence investigation of several factors including but not limited to a Natural Resource Inventory, physical on-site conditions, local, State and Federal requirements, approvals, status of any outstanding violation, the past uses and possible residual contamination of a site. Refer to the source layer metadata for detail descriptions of the data attribute and spatial extent limitations.