

**FIGURE CALIFON-1
EXISTING SEWER SERVICE AREAS**

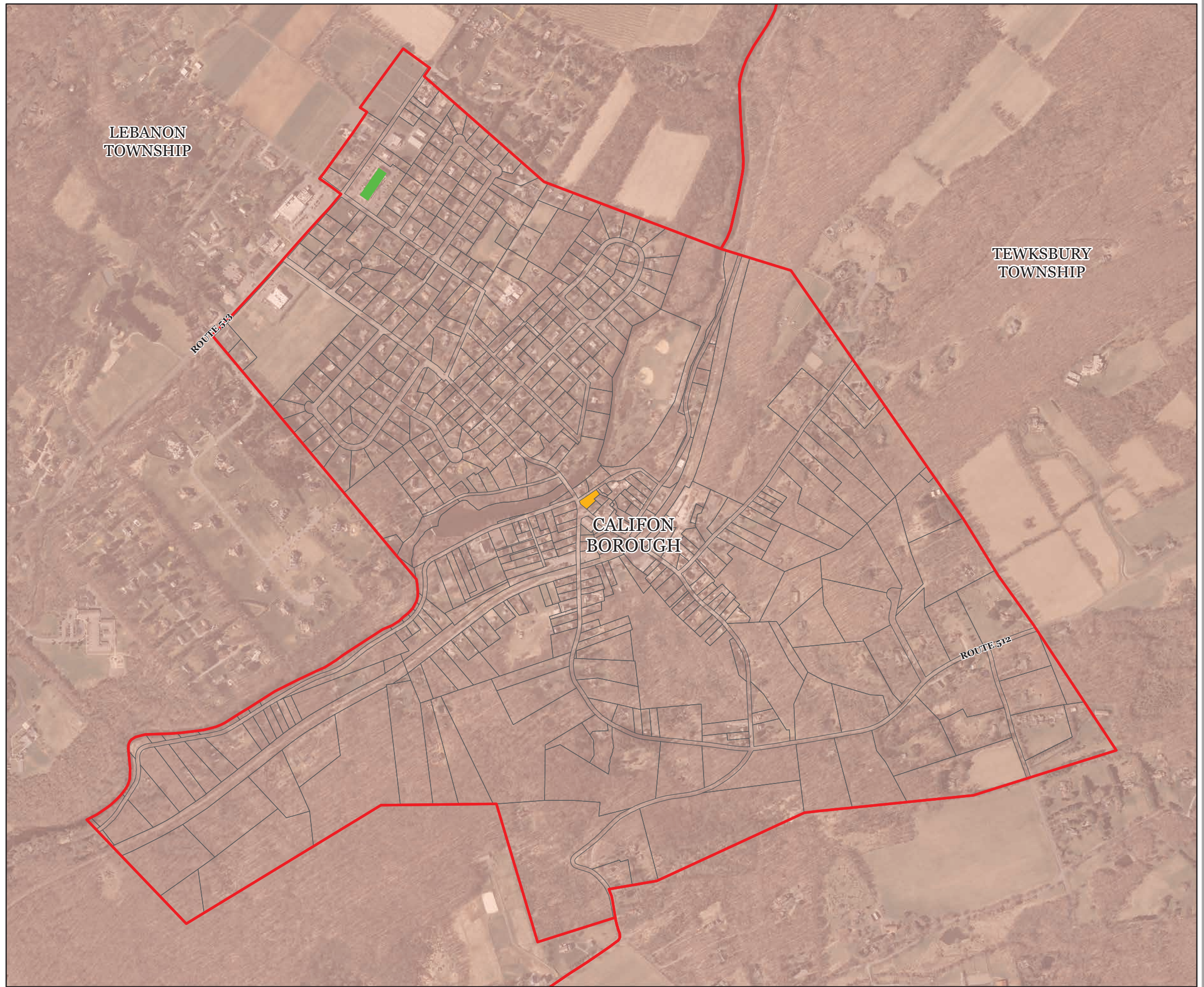
Wastewater Management Plan
Borough of Califon, Hunterdon County,
New Jersey - July 7, 2015

- NJG0212539 / 74 Main St / NON-HDSF
- NJG0183024 / Victorian Square / NON-HDSF
- General Service Area for Wastewater Facilities with Planning Flows Equal to or Less Than 2,000 gallons per day (gpd) which Discharge to Ground Water*
- Municipal Boundaries
- Parcel Boundaries

The information contained on this map is the best available according to the Highlands Council. However, unintentional inaccuracies may occur, particularly where data or information is derived from sources other than the Highlands Council. The Highlands Council cannot be responsible for the misuse or misinterpretation of the information presented herein. Therefore, under no circumstances shall the State of New Jersey or specifically, the Highlands Council be liable for any actions taken or omissions made from reliance on any information contained herein from whatever source nor shall the State be liable for any other consequences from any such reliance. Additional sources of information may have been used to collect the GIS digital data, but this secondary product has not been verified by those sources.

*Wastewater flows in excess of 2,000 gpd shall not be permitted in this area unless the Highlands Council has determined that the discharge is consistent with the Regional Master Plan and the discharge is approved by NJDEP as a revision or amendment to this Wastewater Management Plan. This designation includes restriction of individual subsurface sewage disposal system development or subdivisions of 6 units or greater, unless approved under septic system density provisions of the Highlands Checklist Ordinance adopted by Califon Borough pursuant to Highlands Council approval of its Petition for Plan Conformance.

Note: This figure incorporates by reference the Mapping Requirements pursuant to N.J.A.C. 7:15-5. See page 4 of the Califon Borough Chapter of the Hunterdon County Wastewater Management Plan.



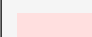

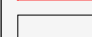


Locator Map

Scale: 0 250 500 750 1,000 Feet
0 0.045 0.09 0.135 0.18 Miles

**FIGURE CALIFON-2
FUTURE SEWER SERVICE AREAS**

Wastewater Management Plan
Borough of Califon, Hunterdon County,
New Jersey - July 7, 2015

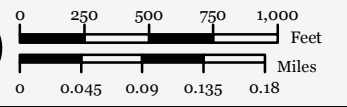
-  NJG0212539 / 74 Main St / NON-HDSF
-  NJG0183024 / Victorian Square / NON-HDSF
-  Septic Area (Planning Flows of 2,000 gallons per day (gpd) or Less)*
-  Municipal Boundaries
-  Parcel Boundaries

The information contained on this map is the best available according to the Highlands Council. However, unintentional inaccuracies may occur, particularly where data or information is derived from sources other than the Highlands Council. The Highlands Council cannot be responsible for the misuse or misinterpretation of the information presented herein. Therefore, under no circumstances shall the State of New Jersey or specifically, the Highlands Council be liable for any actions taken or omissions made from reliance on any information contained herein from whatever source nor shall the State be liable for any other consequences from any such reliance. Additional sources of information may have been used to collect the GIS digital data, but this secondary product has not been verified by those sources.

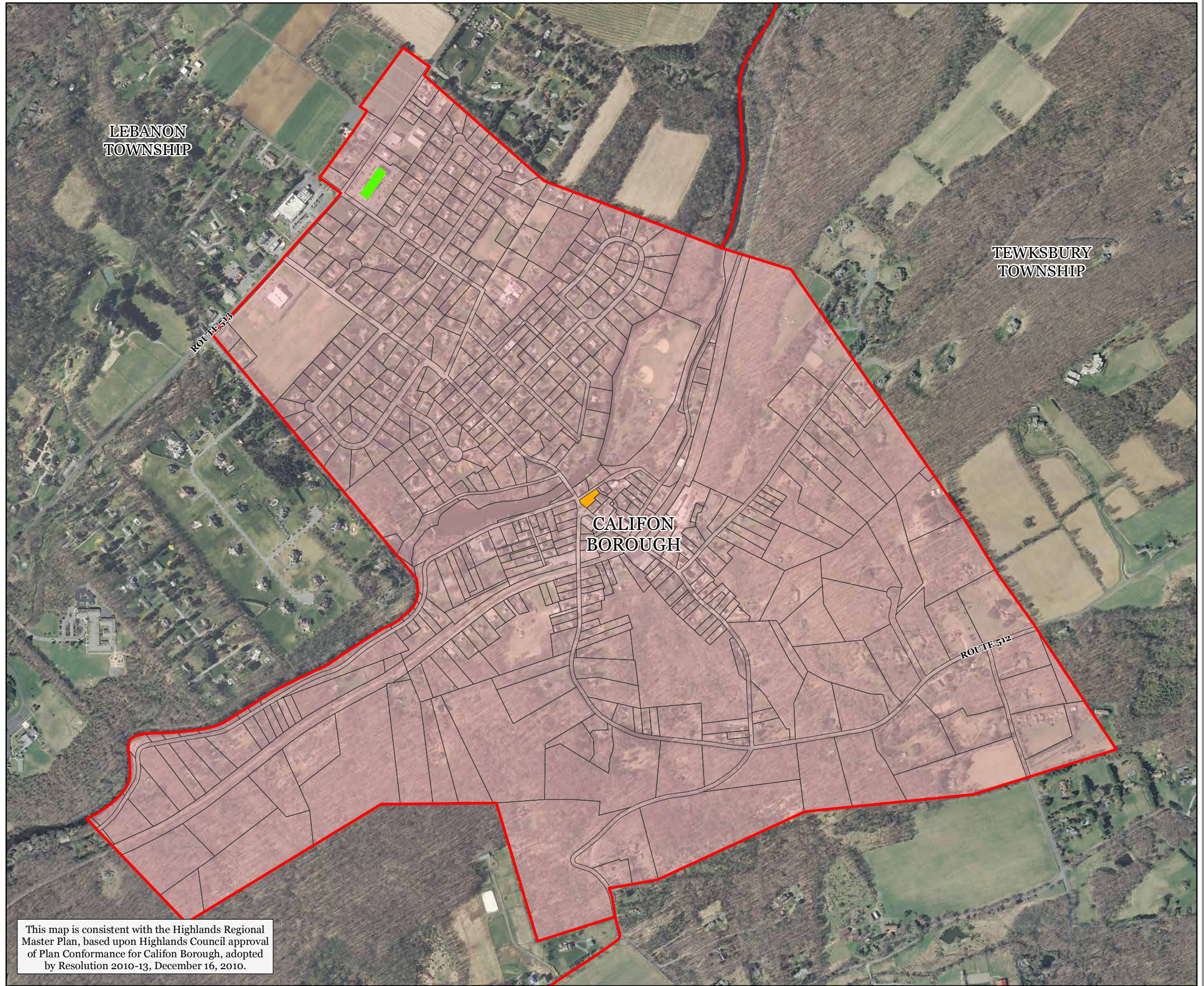
*Wastewater flows in excess of 2,000 gpd shall not be permitted in this area unless the Highlands Council has determined that the discharge is consistent with the Regional Master Plan and the discharge is approved by NJDEP as a revision or amendment to this Wastewater Management Plan. This designation includes restriction of individual subsurface sewage disposal system development or subdivisions of 6 units or greater, unless approved under septic system density provisions of the Highlands Checklist Ordinance adopted by Califon Borough pursuant to Highlands Council approval of its Petition for Plan Conformance.

Note: This figure incorporates by reference the Mapping Requirements pursuant to N.J.A.C. 7:15-5. See page 4 of the Califon Borough Chapter of the Hunterdon County Wastewater Management Plan.

Locator Map



This map is consistent with the Highlands Regional Master Plan, based upon Highlands Council approval of Plan Conformance for Califon Borough, adopted by Resolution 2010-13, December 16, 2010.



**FIGURE CALIFON-3
PUBLIC COMMUNITY WATER SYSTEMS**

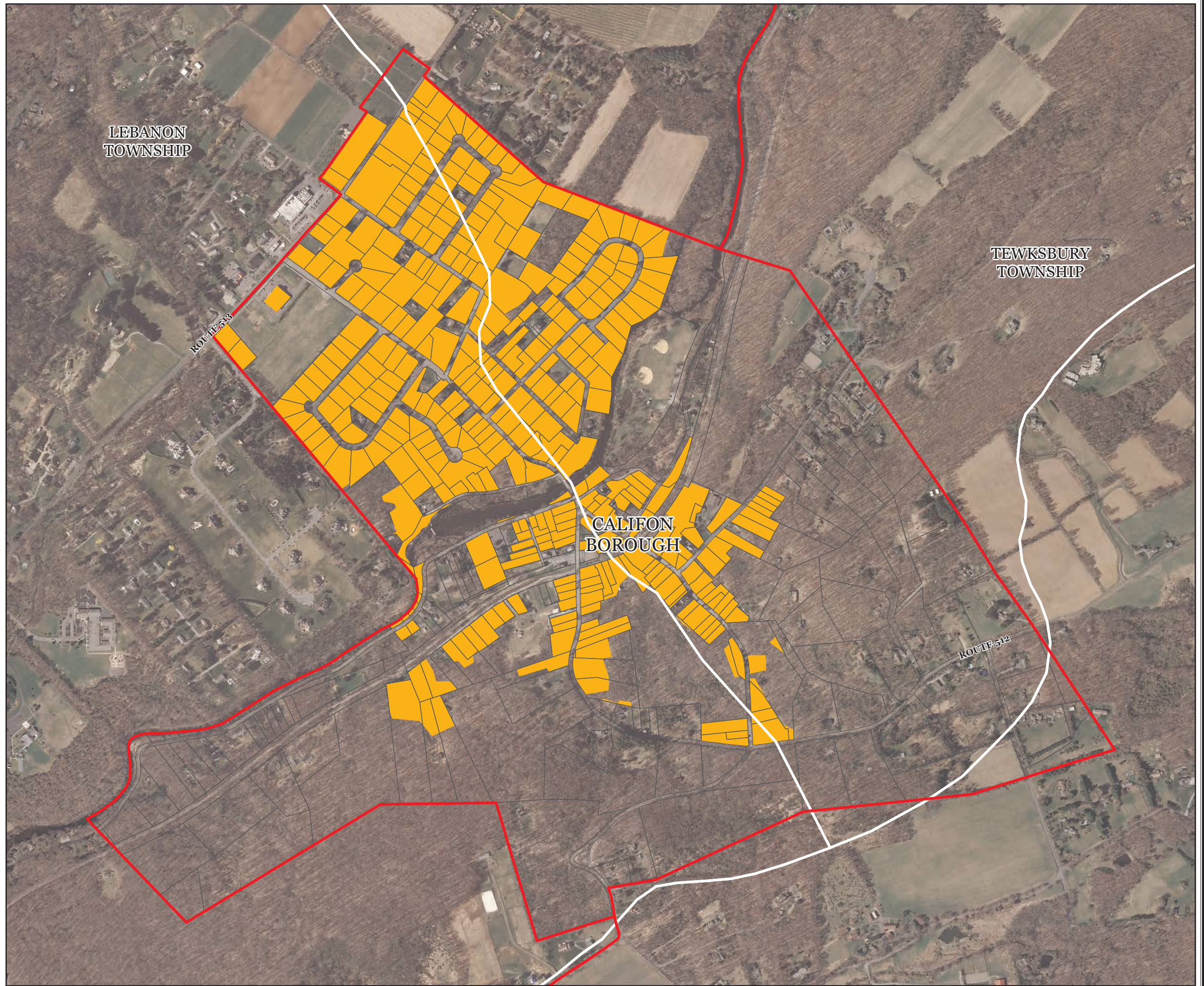
Wastewater Management Plan
Borough of Califon, Hunterdon County,
New Jersey - July 7, 2015

**Public Community Water Systems
Existing Area Served**

- 1004001 / Aqua New Jersey (Califon) / Facility #2
- Municipal Boundaries
- Parcel Boundaries
- HUC14 Subwatersheds

The information contained on this map is the best available according to the Highlands Council. However, unintentional inaccuracies may occur, particularly where data or information is derived from sources other than the Highlands Council. The Highlands Council cannot be responsible for the misuse or misinterpretation of the information presented herein. Therefore, under no circumstances shall the State of New Jersey or specifically, the Highlands Council be liable for any actions taken or omissions made from reliance on any information contained herein from whatever source nor shall the State be liable for any other consequences from any such reliance. Additional sources of information may have been used to collect the GIS digital data, but this secondary product has not been verified by those sources.

Note: This figure incorporates by reference the Mapping Requirements pursuant to N.J.A.C. 7:15-5. See page 4 of the Califon Borough Chapter of the Hunterdon County Wastewater Management Plan.



Locator Map

