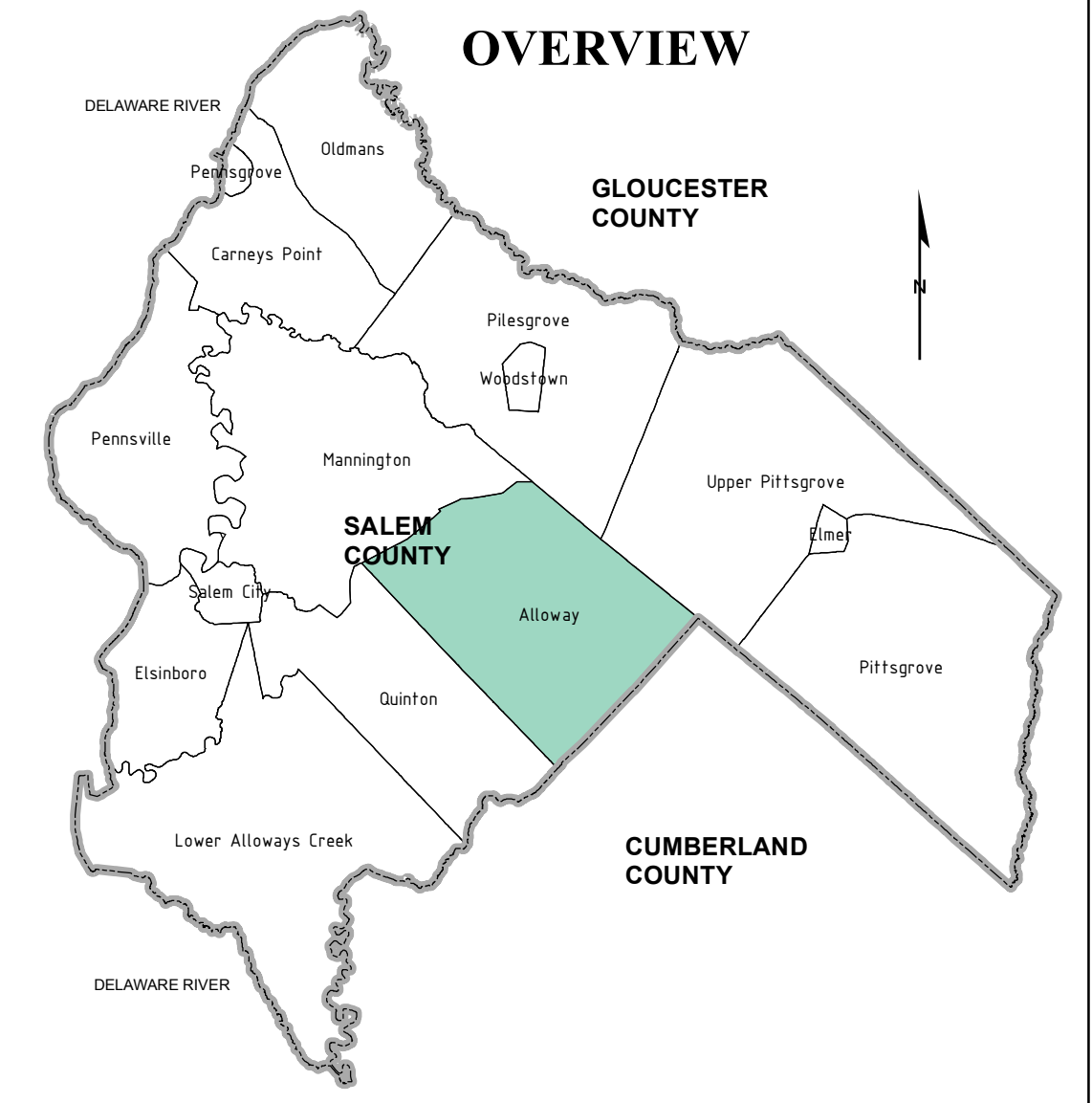
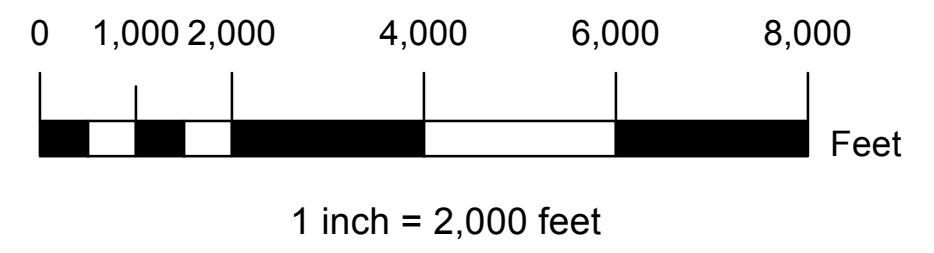


LEGEND

- HUC 11
- STREAMS
- Lakes



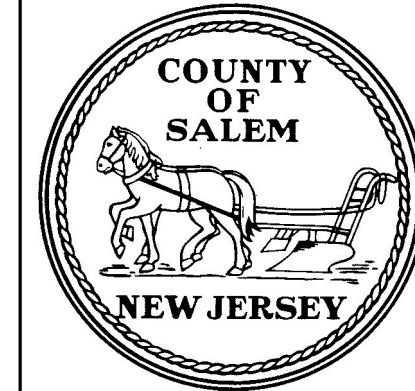
NOTES:

BASEMAP INFORMATION INCLUDING PARCELS, ROADS AND MUNICIPAL BOUNDARY TAKEN FROM THE SALEM COUNTY DATABASE FILE.

"THIS (MAP/PUBLICATION/REPORT) WAS DEVELOPED USING NEW JERSEY DEPARTMENT OF ENVIRONMENTAL PROTECTION GEOGRAPHIC INFORMATION SYSTEM DIGITAL DATA, BUT THIS SECONDARY PRODUCT HAS NOT BEEN VERIFIED BY NJDEP AND IS NOT STATE-AUTHORIZED."

NO.	DATE	REVISION	BY:

WASTEWATER MANAGEMENT PLAN
PLANNING AREA - MAP 1
TOWNSHIP OF ALLOWAY
 SALEM COUNTY
WASTEWATER MANAGEMENT PLAN
 SALEM COUNTY, NEW JERSEY

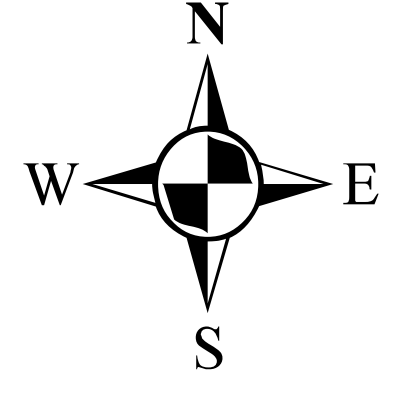
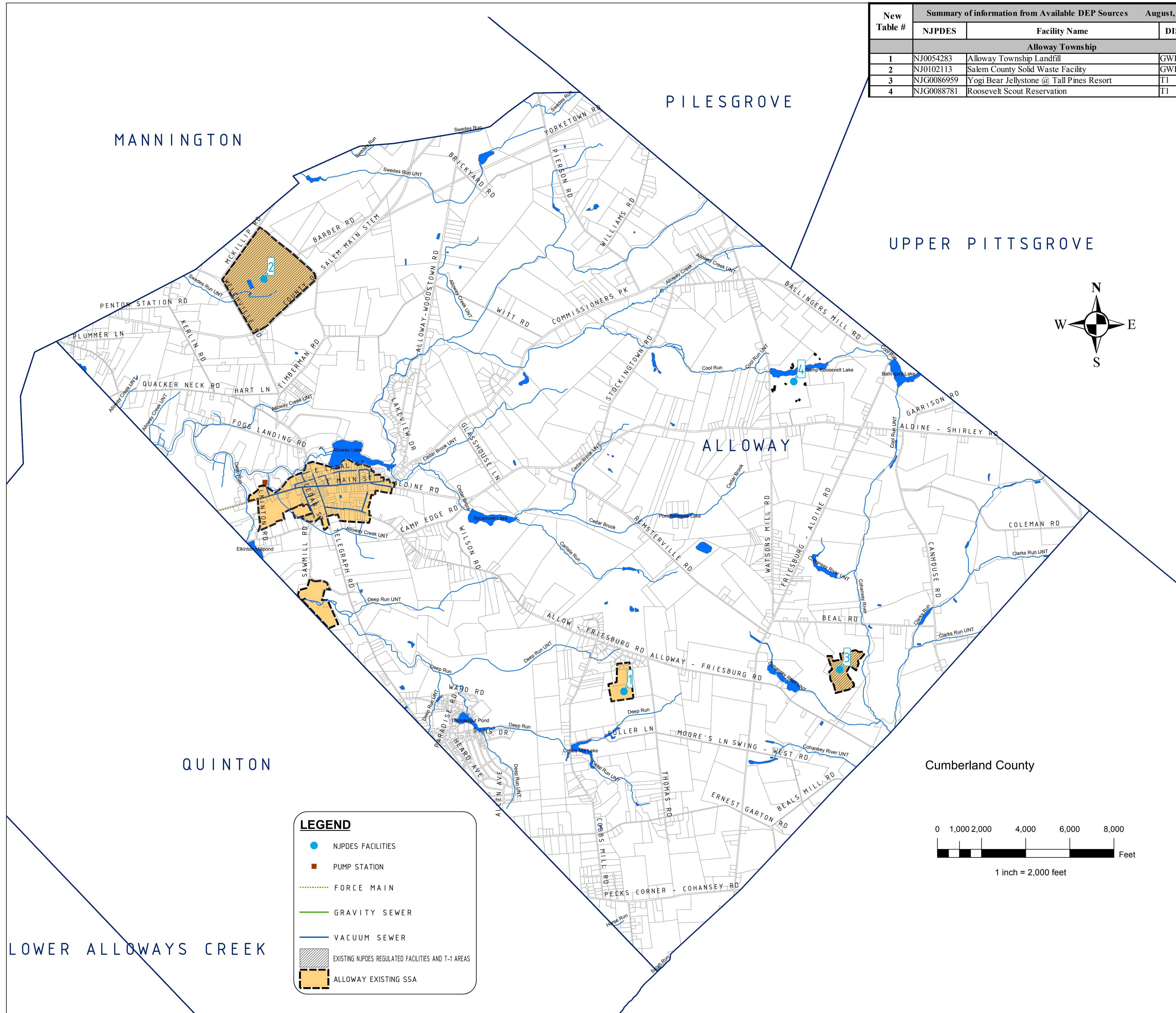
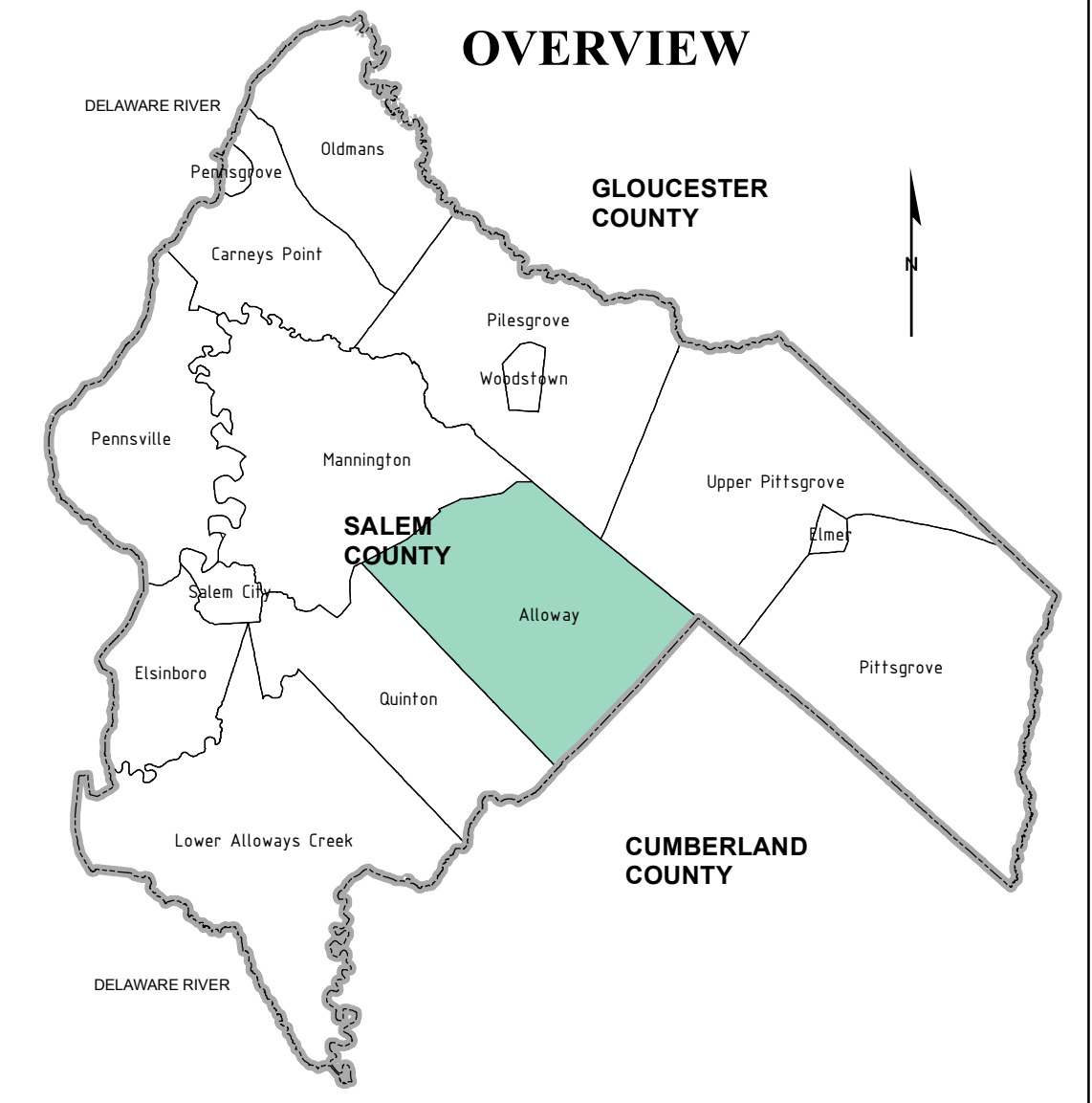


SALEM COUNTY DEPARTMENT OF PLANNING AND AGRICULTURE
 110 FIFTH STREET
 SALEM, NEW JERSEY

SICKELS & ASSOCIATES INC.
 SHERWOOD MEWS
 833 KINGS HIGHWAY
 WOODBURY, NEW JERSEY 08096-3110
 NJ CERTIFICATE OF AUTHORIZATION
 No. GA219949031
 856-848-6800
 FAX 848-8520

DRAWN BY: DJP	DATE: 2-17-12	SHEET: 1 of 1
CHECKED BY: DSP	DWG: F-SALEM WMP	FILE: 5363

New Table #	Summary of information from Available DEP Sources August, 2012		
	NJPDES	Facility Name	DIS TYPE
Alloway Township			
1	NJ0054283	Alloway Township Landfill	GWIND
2	NJ0102113	Salem County Solid Waste Facility	GWIND
3	NJG0086959	Yogi Bear Jellystone @ Tall Pines Resort	T1
4	NJG0088781	Roosevelt Scout Reservation	T1



NOTES:

"LOCATIONS OF FUTURE PUMP STATIONS, MAJOR INTERCEPTORS, AND TRUNK SEWERS ARE BEING PROVIDED FOR GENERAL INFORMATION ONLY AND WILL NOT SERVE AS THE BASIS FOR ANY FUTURE CONSISTENCY DETERMINATIONS OR PERMIT REVIEWS UNLESS THE PUMP STATION, MAJOR INTERCEPTOR OR TRUNK SEWER IS PART OF A STATE OR FEDERALLY FUNDED PROJECT."

"ALL EXISTING, NEW, OR EXPANDED INDUSTRIAL PRETREATMENT FACILITIES REQUIRING SIGNIFICANT INDIRECT USER (SIU) PERMITS AND/OR TREATMENT WORKS APPROVALS, AND WHICH ARE LOCATED WITHIN THE SPECIFIED SEWER SERVICE AREA, IS DEEMED TO BE CONSISTENT."

PLANS FOR THE SANITARY SEWER MAINS, MANHOLES & PUMP STATION LOCATIONS WERE RECEIVED FROM THE TOWNSHIP OF ALLOWAY.

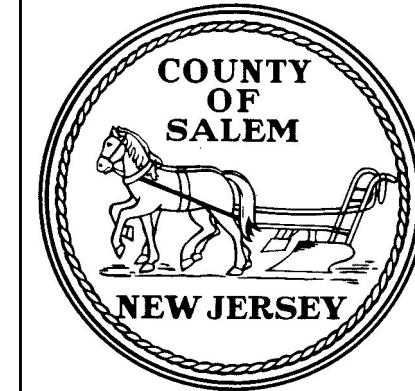
BASEMAP INFORMATION INCLUDING PARCELS, ROADS AND MUNICIPAL BOUNDARY TAKEN FROM THE SALEM COUNTY DATABASE FILE.

"THIS (MAP/PUBLICATION/REPORT) WAS DEVELOPED USING NEW JERSEY DEPARTMENT OF ENVIRONMENTAL PROTECTION GEOGRAPHIC INFORMATION SYSTEM DIGITAL DATA, BUT THIS SECONDARY PRODUCT HAS NOT BEEN VERIFIED BY NJDEP AND IS NOT STATE-AUTHORIZED."

NO.	DATE	REVISION	BY:
1.	12-18-13	REV NJPDES-T1 AREAS & TABLE PER NJDEP COMMENTS	DJP

EXISTING FACILITIES AND SERVICE AREA - MAP 2

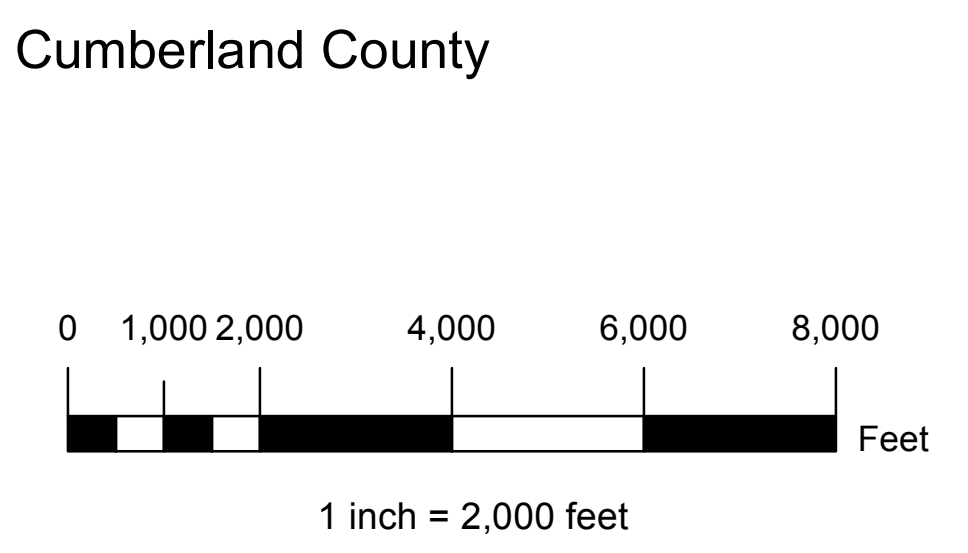
TOWNSHIP OF ALLOWAY
SALEM COUNTY
WASTEWATER MANAGEMENT PLAN
SALEM COUNTY, NEW JERSEY



SALEM COUNTY DEPARTMENT OF PLANNING AND AGRICULTURE
110 FIFTH STREET
SALEM, NEW JERSEY

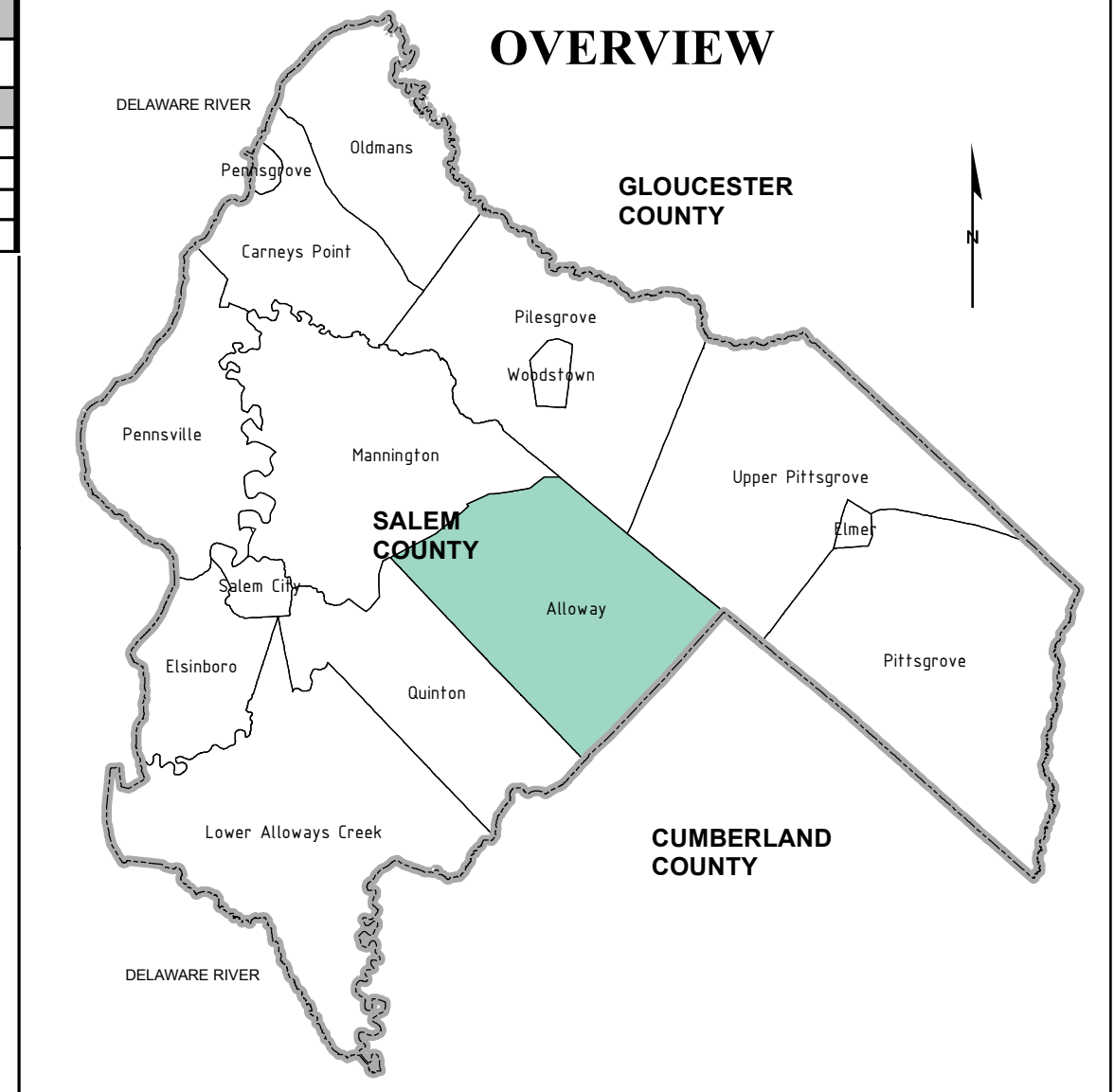
LEGEND

- NJPDES FACILITIES
- PUMP STATION
- FORCE MAIN
- GRAVITY SEWER
- VACUUM SEWER
- EXISTING NPDES REGULATED FACILITIES AND T-1 AREAS
- ALLOWAY EXISTING SSA



SICKELS & ASSOCIATES INC.	SHERWOOD MEWS 833 KINGS HIGHWAY WOODBURY, NEW JERSEY 08096-3110 NJ CERTIFICATE OF AUTHORIZATION No. GA27994900	
	856-848-6800 FAX 848-8520	
DRAWN BY: DJP	DATE: 2-16-11	SHEET: 1 of 1
CHECKED BY: DSP	DWG: F-SALEM WMP	FILE: 5363

New Table #	Summary of information from Available DEP Sources		August, 2012
	NJPDES	Facility Name	
	Alloway Township		
1	NJ0054283	Alloway Township Landfill	GWIND
2	NJ0102113	Salem County Solid Waste Facility	GWIND
3	NJG0086959	Yogi Bear Jellystone @ Tall Pines Resort	T1
4	NJG0088781	Roosevelt Scout Reservation	T1



NOTES:

"PLEASE NOTE THAT WHERE THE VISUAL DEPICTION OF SSA DOES NOT EXPLICITLY INDICATE THE SPECIFIC SEWER SERVICE AREA ASSOCIATED WITH THE WASTEWATER TREATMENT FACILITIES, THE STATEWIDE DIGITIZED SEWER SERVICE AREA MAPPING DOES. THE PUBLICLY AVAILABLE SEWER SERVICE AREA MAPPING IS AVAILABLE FOR VIEWING ON NJ GEO-WEB AT [HTTP://WWW.NJ.GOV/DEP/GIS/GEOWEB/SPASH.HTM](http://www.nj.gov/dep/gis/geoweb/splash.htm). IT IS ALSO AVAILABLE FOR DOWNLOAD TO USE IN ARCGIS AT [HTTP://WWW.NJ.GOV/DEP/GIS/STATESHP.HTM](http://www.nj.gov/dep/gis/stateshp.html)."

"LOCATIONS OF FUTURE PUMP STATIONS, MAJOR INTERCEPTORS, AND TRUNK SEWERS ARE BEING PROVIDED FOR GENERAL INFORMATION ONLY AND WILL NOT SERVE AS THE BASIS FOR ANY FUTURE CONSISTENCY DETERMINATIONS OR PERMIT REVIEWS UNLESS THE PUMP STATION, MAJOR INTERCEPTOR OR TRUNK SEWER IS PART OF A STATE OR FEDERALLY FUNDED PROJECT."

"ALL EXISTING, NEW, OR EXPANDED INDUSTRIAL PRETREATMENT FACILITIES REQUIRING SIGNIFICANT INDIRECT USER (SIU) PERMITS AND/OR TREATMENT WORKS APPROVALS, AND WHICH ARE LOCATED WITHIN THE SPECIFIED SEWER SERVICE AREA, IS DEEMED TO BE CONSISTENT."

"PRE-EXISTING GRANT CONDITIONS AND REQUIREMENTS (FROM FEDERAL AND STATE GRANTS OR LOANS FOR SEWERAGE FACILITIES) WHICH PROVIDE FOR RESTRICTION OF SEWER SERVICE TO ENVIRONMENTALLY SENSITIVE AREAS, ARE UNAFFECTED BY ADOPTION OF THIS WMP AND COMPLIANCE IS REQUIRED. PLEASE SEE MUNICIPAL WMP CHAPTERS FOR THE EXISTENCE OF ANY APPLICABLE ENVIRONMENTALLY SENSITIVE AREAS IN WHICH FEDERAL 201 GRANT LIMITATIONS PROHIBIT THE EXTENSION OF SEWER SERVICE"

"INDIVIDUAL SUBSURFACE SEWAGE DISPOSAL SYSTEMS (ISSDS) FOR INDIVIDUAL RESIDENCES CAN ONLY BE CONSTRUCTED IN DEPICTED SEWER SERVICE AREAS IF LEGALLY ENFORCEABLE GUARANTEES ARE PROVIDED, BEFORE SUCH CONSTRUCTION, THAT USE OF SUCH SYSTEMS WILL BE DISCONTINUED WHEN THE DEPICTED SEWER SERVICE BECOMES AVAILABLE. THIS APPLIES TO ISSDS THAT REQUIRE CERTIFICATION FROM THE DEPARTMENT UNDER THE REALTY IMPROVEMENT SEWERAGE AND FACILITIES ACT (N.J.S.A. 58:11-23) OR INDIVIDUAL TREATMENT WORKS APPROVAL OR NEW JERSEY POLLUTANT DISCHARGE ELIMINATION SYSTEM PERMITS (UNDER N.J.A.C. 7:14A). IT ALSO APPLIES TO ISSDS WHICH REQUIRE ONLY LOCAL APPROVALS. COMPLIANCE WITH THE CONNECTION REQUIREMENT HAS BEEN DEMONSTRATED THROUGH ADOPTION OF TOWNSHIP OF ALLOWAY ORDINANCE [INSERT ORDINANCE #]

IN ADDITION TO THE TEXT FOUND IN THE WMP TEMPLATE DOCUMENT THE FOLLOWING IS NEEDED: "PROPOSED DEVELOPMENTS TYING INTO EXISTING AND PROPOSED SEWER SERVICE AREAS WHICH REQUIRE COASTAL PERMITS MUST DEMONSTRATE COMPLIANCE WITH ALL APPLICABLE SECTIONS OF THE COASTAL ZONE MANAGEMENT RULES INCLUDING, BUT NOT LIMITED TO, WETLANDS (N.J.A.C. 7:7E-3.27), WETLANDS BUFFERS (N.J.A.C. 7:7E-3.38), SECONDARY IMPACTS (N.J.A.C. 7:7E-6.3), PUBLIC FACILITY USE POLICIES (N.J.A.C. 7:7E-7.6), WATER QUALITY (N.J.A.C. 7:7E-8.4), GROUND WATER USE (N.J.A.C. 7:7E-8.6) AND THE POLICIES UNDER GENERAL LAND AREAS RULES, SUBCHAPTERS 5, 5A AND 5B"

PLANS FOR THE SANITARY SEWER MAINS, MANHOLES & PUMP STATION LOCATIONS WERE RECEIVED FROM THE TOWNSHIP OF ALLOWAY.

BASEMAP INFORMATION INCLUDING PARCELS, ROADS AND MUNICIPAL BOUNDARY TAKEN FROM THE SALEM COUNTY DATABASE FILE.

"THIS (MAP/PUBLICATION/REPORT) WAS DEVELOPED USING NEW JERSEY DEPARTMENT OF ENVIRONMENTAL PROTECTION GEOGRAPHIC INFORMATION SYSTEM DIGITAL DATA, BUT THIS SECONDARY PRODUCT HAS NOT BEEN VERIFIED BY NJDEP AND IS NOT STATE-AUTHORIZED."

3.	9-2-15	ADDED NOTE PER NJDEP COMMENTS	DJP
2.	7-14-14	REV MAPS PER NJDEP COMMENTS	DJP
1.	12-18-13	REV NJPDES-T1 AREAS & TABLE PER NJDEP COMMENTS	DJP
NO.	DATE	REVISION	BY:

FUTURE SEWER SERVICE AREA - MAP3

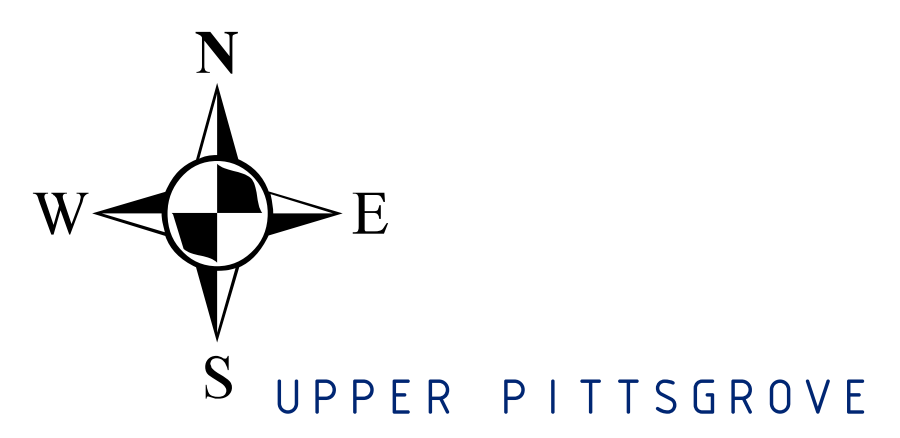
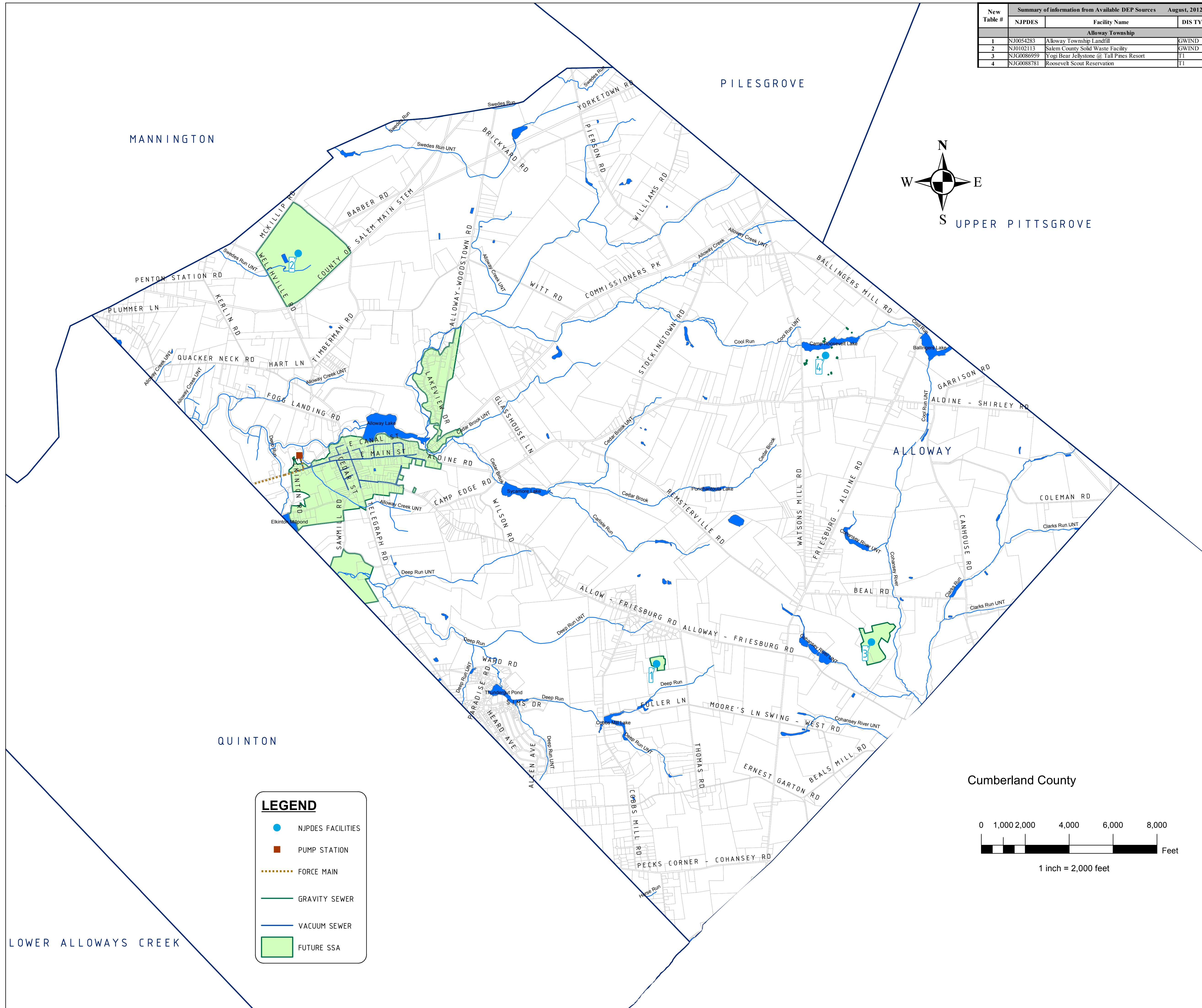
TOWNSHIP OF ALLOWAY
SALEM COUNTY
WASTEWATER MANAGEMENT PLAN
SALEM COUNTY, NEW JERSEY

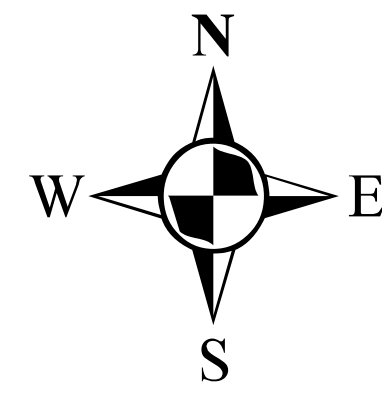


SICKELS & ASSOCIATES, INC.

SHERWOOD MEWS
833 KINGS HIGHWAY
WOODBURY, NEW JERSEY 08096-3110
NJ CERTIFICATE OF AUTHORIZATION
No. GA21994900
856-848-6800
FAX 848-8520

DRAWN BY: DJP DATE: 2-16-11 SHEET: 1 of 1
CHECKED BY: DSP DWG: F-SALEM WMP FILE: 5363





MANNINGTON

PILESG

UPPER PITTSGROVE

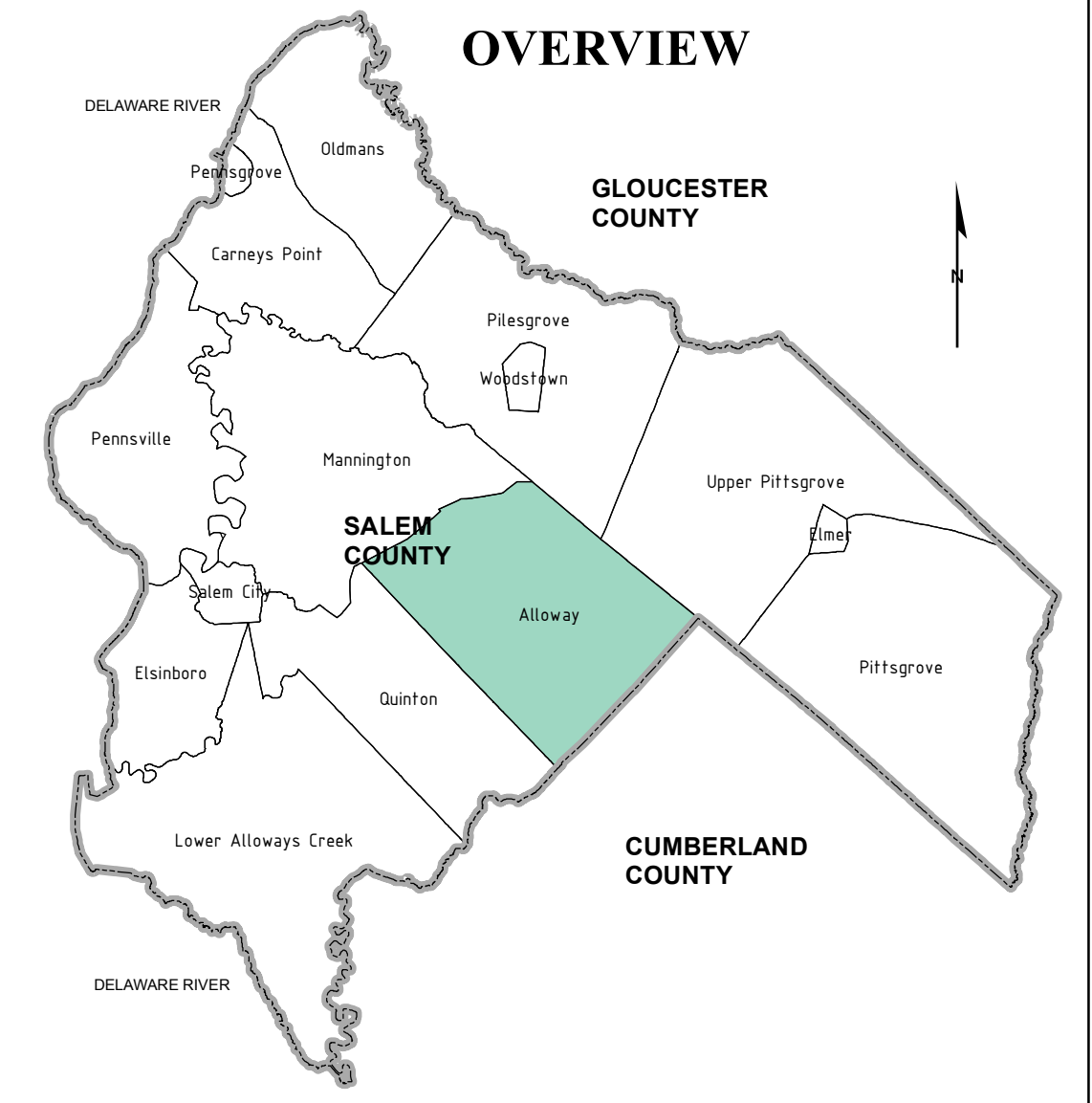
Cumberland County

QUINTON

LOWER ALLOWAYS CREEK

ZONING SUMMARY TABLE											
ZONE	ZONE TITLE	MINIMUM LOT AREA	MINIMUM LOT WIDTH	MINIMUM LOT DEPTH	MINIMUM FRONT YARD SETBACK	MINIMUM SIDE YARD SETBACK	MINIMUM REAR YARD SETBACK	MAXIMUM BUILDING HEIGHT	MINIMUM HABITABLE FLOOR AREA	MAXIMUM LOT COVERAGE	
P	PUBLIC	12,000 SF	75'	125'	30'	15'	30'	50'	-	30%	
A	AGRICULTURAL	1 ACRE	150'	200'	40'	25'	50'	45'	-	15%	
RR	RURAL RESIDENTIAL	MUNICIPAL BUILDINGS, WATER, FOREST OR WILDLIFE CONSERVATION AREAS AND USES	3 ACRES	200'	200'	40'	25'	50'	-	15%	
LR	LOW RESIDENTIAL	ACCESSORY USES	2 ACRES	200'	200'	40'	25'	25'	45'	-	20%
		PRINCIPAL USES	2 ACRES	200'	200'	40'	25'	40'	35'	-	20%
MR	MEDIUM RESIDENTIAL	PRINCIPAL USES	18,000SF	90'	150'	30'	15'	30'	35'	**	20%
		TWO-FAMILY DWELLINGS	24,000SF	120'	150'	30'	15'	30'	35'	850	20%
HR	HIGH RESIDENTIAL	ACCESSORY USES	1 ACRE	150'	200'	40'	10'	10'	25'	-	15'
		PRINCIPAL USES	1 ACRE	150'	200'	40'	25'	50'	35'	**	15'
C	COMMERCIAL	ACCESSORY USES	12,000 SF	75'	125'	40'	20'	20'	35'	-	30%
		PRINCIPAL USES	12,000 SF	75'	125'	40'	20'	20'	35'	-	30%

* SINGLE STORY: 1,100 SF - SPLIT LEVEL: 1,300 SF - 1 1/2 AND 2 STORY: 1,500 SF
 ** SINGLE STORY: 960 SF - SPLIT LEVEL 1,200 SF - 1 1/2 & 2 STORY: 1,400 SF



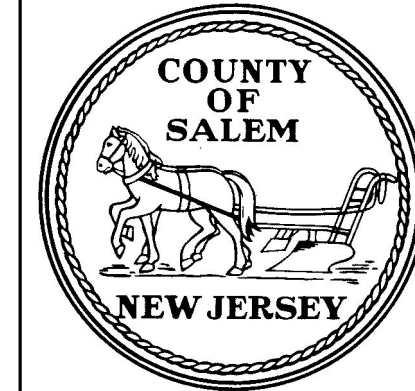
NOTES:

ZONING MAP TAKEN FROM SALEM COUNTY DATABASE FILE DATED 12-8-10. ZONING MAP DATED 2-07. ORDINANCE INFORMATION TAKEN FROM THE TOWNSHIP OF ALLOWAY ORDINANCE DATED 8-1-10. BASEMAP INFORMATION INCLUDING PARCELS, ROADS AND MUNICIPAL BOUNDARY TAKEN FROM THE SALEM COUNTY DATABASE FILE.
 THIS (MAP/PUBLICATION/REPORT) WAS DEVELOPED USING NEW JERSEY DEPARTMENT OF ENVIRONMENTAL PROTECTION GEOGRAPHIC INFORMATION SYSTEM DIGITAL DATA, BUT THIS SECONDARY PRODUCT HAS NOT BEEN VERIFIED BY NJDEP AND IS NOT STATE-AUTHORIZED.

NO.	DATE	REVISION	BY:

ZONING - MAP 4

TOWNSHIP OF ALLOWAY
 SALEM COUNTY
 WASTEWATER MANAGEMENT PLAN
 SALEM COUNTY, NEW JERSEY



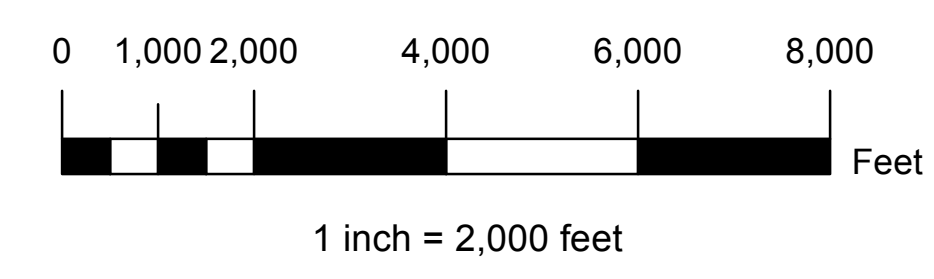
SALEM COUNTY DEPARTMENT OF PLANNING AND AGRICULTURE
 110 FIFTH STREET
 SALEM, NEW JERSEY

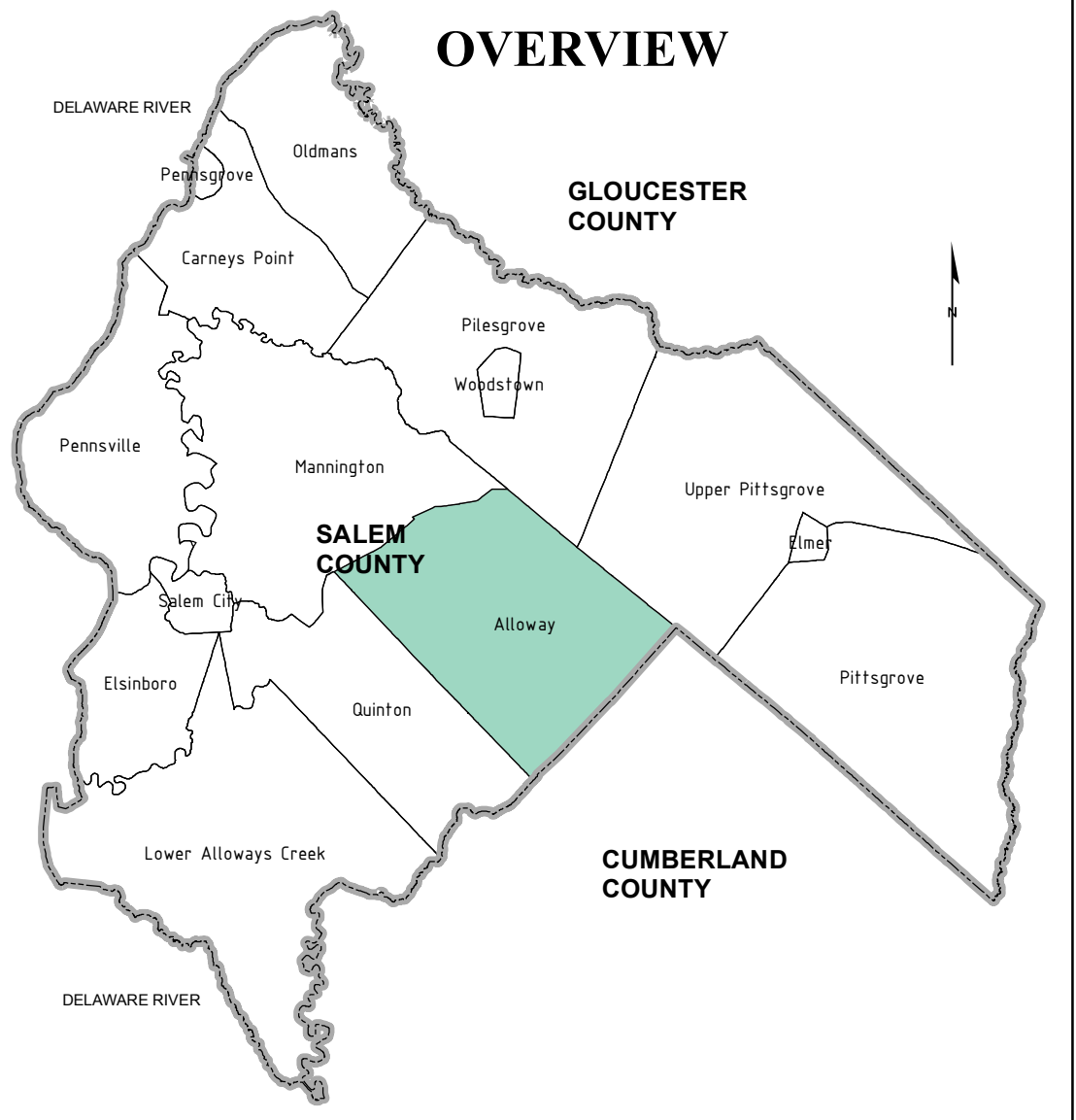
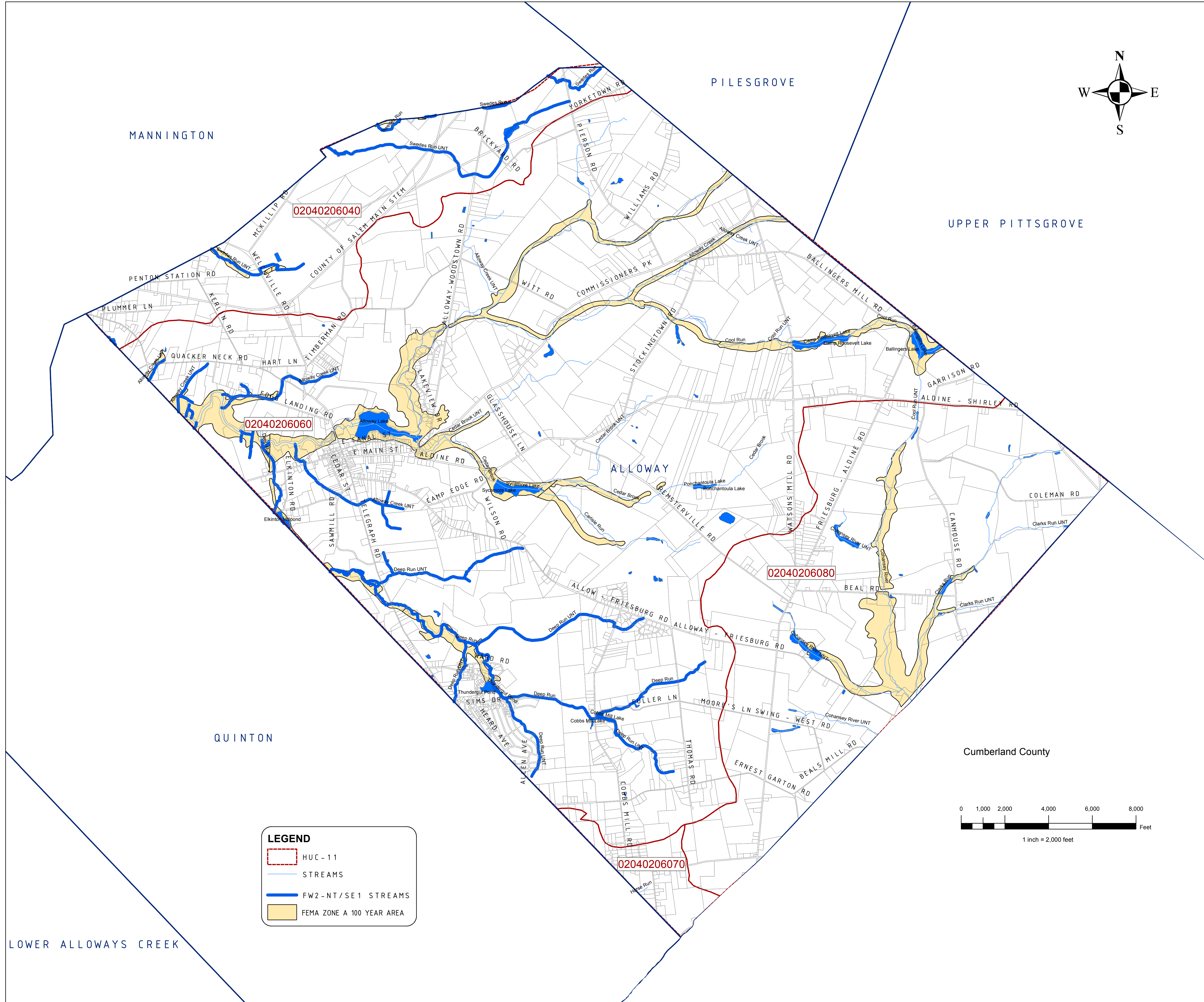
SICKELS & ASSOCIATES INC. SHERWOOD MEWS
 833 KINGS HIGHWAY
 WOODBURY, NEW JERSEY 08096-3110
 NJ CERTIFICATE OF AUTHORIZATION
 No. GA21994903 856-848-6800
 FAX 848-8520

DRAWN BY: DJP	DATE: 2-16-11	SHEET: 1 of 1
CHECKED BY: DSP	DWG: F-SALEM WMP	FILE: 5363

LEGEND

- A - AGRICULTURE
- C - COMMERCIAL
- HP - HISTORIC PRESERVATION
- HR - HIGH RESIDENTIAL
- LR - LOW RESIDENTIAL
- MR - MEDIUM RESIDENTIAL
- P - PUBLIC
- RR - RURAL RESIDENTIAL





NOTES:

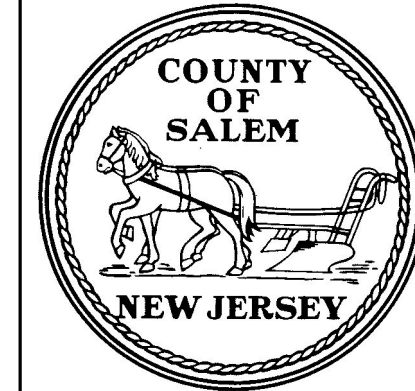
"DEVELOPMENT IN AREAS MAPPED AS WETLANDS, FLOOD PRONE AREAS, SUITABLE HABITAT FOR ENDANGERED AND THREATENED SPECIES AS IDENTIFIED ON THE DEPARTMENT'S LANDSCAPE MAPS OF HABITAT FOR ENDANGERED, THREATENED AND OTHER PRIORITY WILDLIFE AS RANK 3.4 AND 5, NATURAL HERITAGE PRIORITY SITES, RIPARIAN ZONES, STEEP SLOPES, OR DESIGNATED RIVER AREAS MAY BE SUBJECT TO SPECIAL REGULATION UNDER FEDERAL OR STATE STATUTES OR RULES, AND THAT INTERESTED PERSONS SHOULD CHECK WITH THE DEPARTMENT FOR THE LATEST INFORMATION. DEPICTION OF ENVIRONMENTAL FEATURES SHALL BE FOR GENERAL INFORMATION PURPOSES ONLY, AND SHALL NOT BE CONSTRUED TO DEFINE THE LEGAL GEOGRAPHIC JURISDICTION OF SUCH STATUTES OR RULES"

BASEMAP INFORMATION INCLUDING PARCELS, ROADS AND MUNICIPAL BOUNDARY TAKEN FROM THE SALEM COUNTY DATABASE FILE.

"THIS (MAP/PUBLICATION/REPORT) WAS DEVELOPED USING NEW JERSEY DEPARTMENT OF ENVIRONMENTAL PROTECTION GEOGRAPHIC INFORMATION SYSTEM DIGITAL DATA, BUT THIS SECONDARY PRODUCT HAS NOT BEEN VERIFIED BY NJDEP AND IS NOT STATE-AUTHORIZED."

NO.	DATE	REVISION	BY:

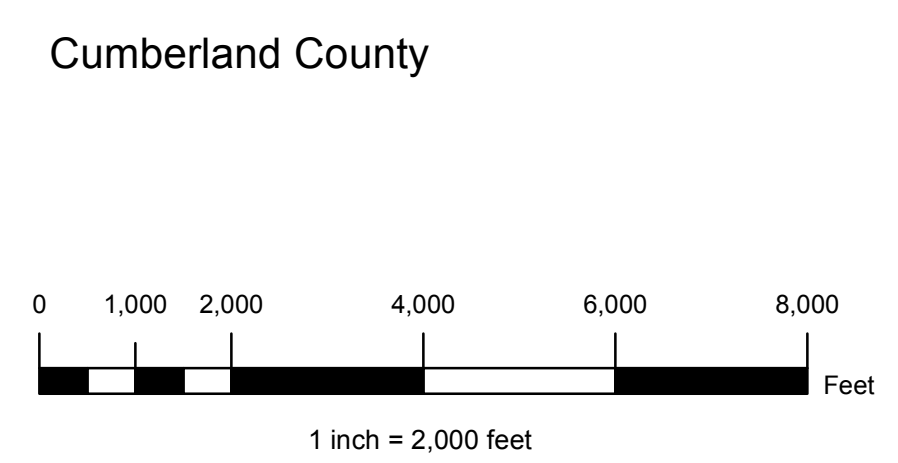
ENVIRONMENTAL FEATURES - MAP 5A
HUC-11, CATEGORY ONE STREAMS, LAKES
& FEMA 100 YEAR ZONE
TOWNSHIP OF ALLOWAY
 SALEM COUNTY
 WASTEWATER MANAGEMENT PLAN
 SALEM COUNTY, NEW JERSEY



SALEM COUNTY DEPARTMENT OF
PLANNING AND AGRICULTURE
 110 FIFTH STREET
 SALEM, NEW JERSEY

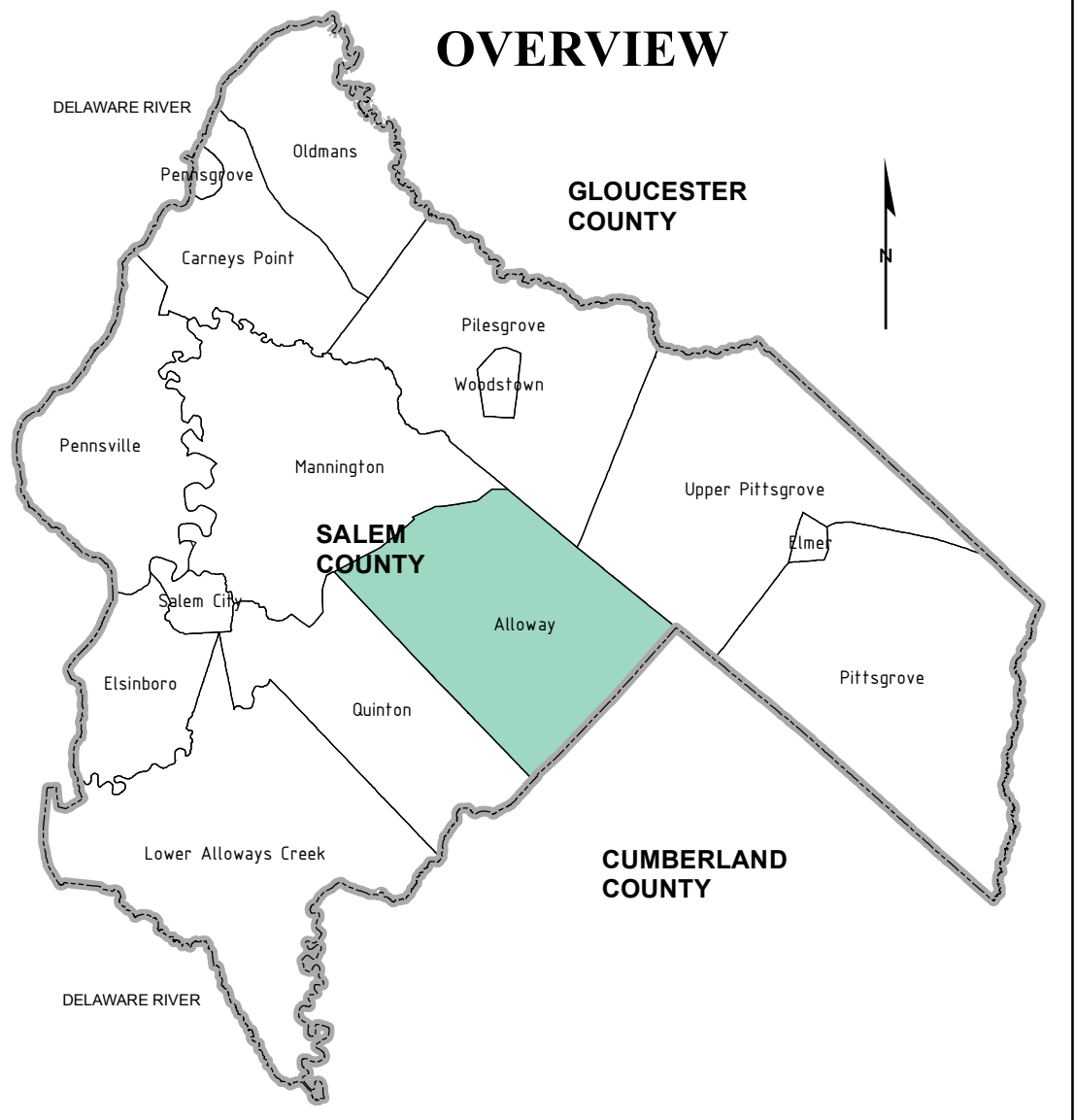
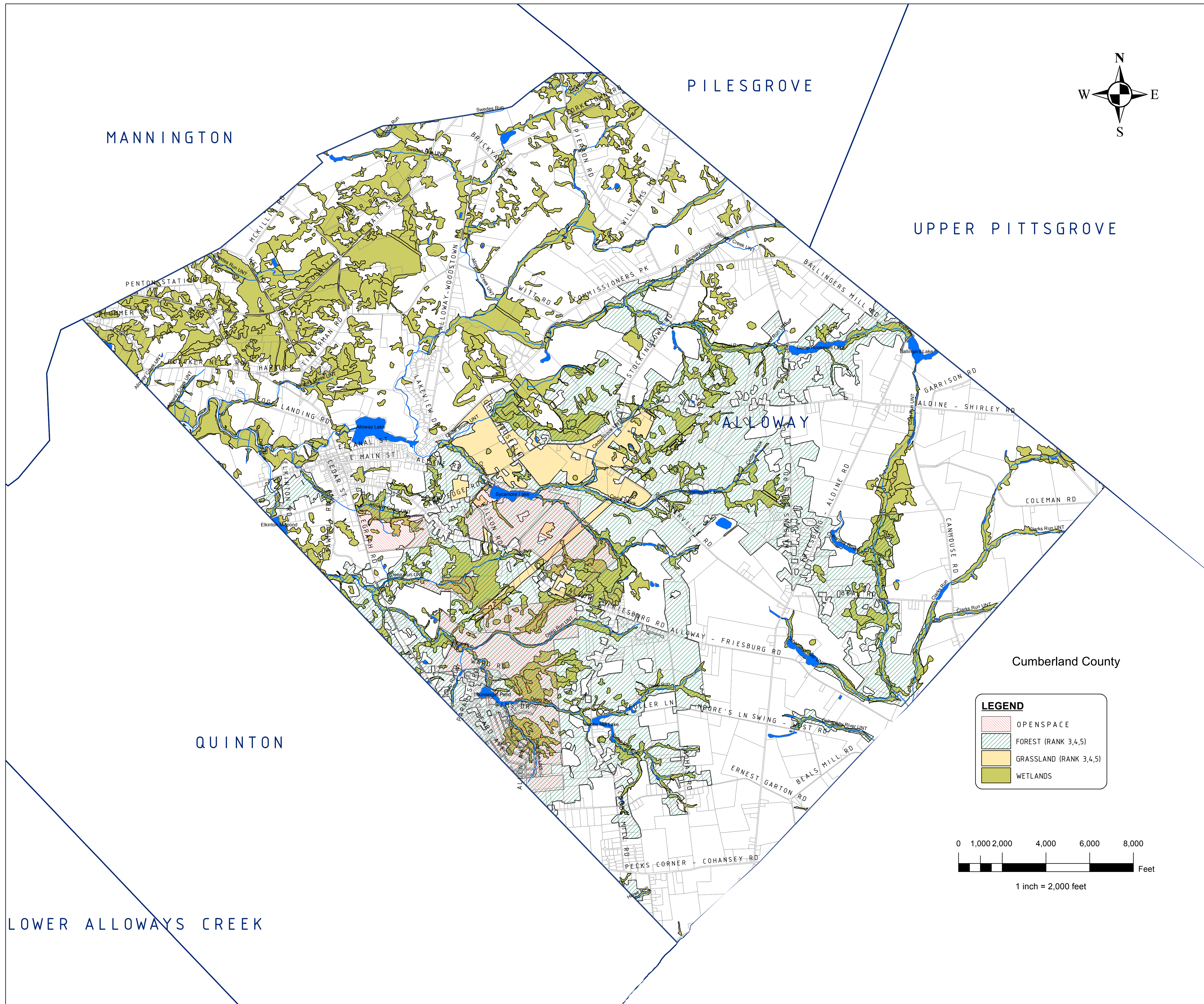
LEGEND

- HUC - 11
- STREAMS
- FW2 - NT/SE1 STREAMS
- FEMA ZONE A 100 YEAR AREA



LOWER ALLOWAYS CREEK

SICKELS & ASSOCIATES INC.	SHERWOOD MEWS 833 KINGS HIGHWAY WOODBURY, NEW JERSEY 08096-3110 <small>N.J. CERTIFICATE OF AUTHORIZATION No. GA21994900</small> 856-848-6800 FAX 848-8520
	DRAWN BY: DJP DATE: 2-16-11 SHEET: 1 of 1 CHECKED BY: DSP DWG: F-SALEM WMP FILE: 5363



NOTES:

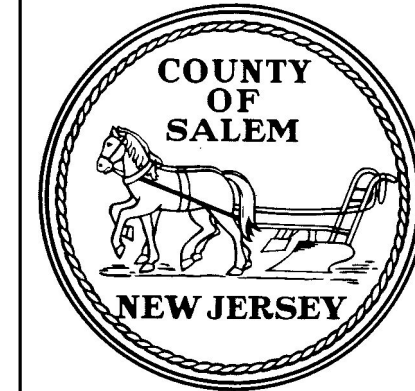
"DEVELOPMENT IN AREAS MAPPED AS WETLANDS, FLOOD PRONE AREAS, SUITABLE HABITAT FOR ENDANGERED AND THREATENED SPECIES AS IDENTIFIED ON THE DEPARTMENT'S LANDSCAPE MAPS OF HABITAT FOR ENDANGERED, THREATENED AND OTHER PRIORITY WILDLIFE AS RANK 3,4, AND 5, NATURAL HERITAGE PRIORITY SITES, RIPARIAN ZONES, STEEP SLOPES, OR DESIGNATED RIVER AREAS MAY BE SUBJECT TO SPECIAL REGULATION UNDER FEDERAL OR STATE STATUTES OR RULES, AND THAT INTERESTED PERSONS SHOULD CHECK WITH THE DEPARTMENT FOR THE LATEST INFORMATION. DEPICTION OF ENVIRONMENTAL FEATURES SHALL BE FOR GENERAL INFORMATION PURPOSES ONLY AND SHALL NOT BE CONSTRUED TO DEFINE THE LEGAL GEOGRAPHIC JURISDICTION OF SUCH STATUTES OR RULES"

BASEMAP INFORMATION INCLUDING PARCELS, ROADS AND MUNICIPAL BOUNDARY TAKEN FROM THE SALEM COUNTY DATABASE FILE.

"THIS MAP/PUBLICATION/REPORT WAS DEVELOPED USING NEW JERSEY DEPARTMENT OF ENVIRONMENTAL PROTECTION GEOGRAPHIC INFORMATION SYSTEM DIGITAL DATA, BUT THIS SECONDARY PRODUCT HAS NOT BEEN VERIFIED BY NJDEP AND IS NOT STATE-AUTHORIZED."

NO.	DATE	REVISION	BY:

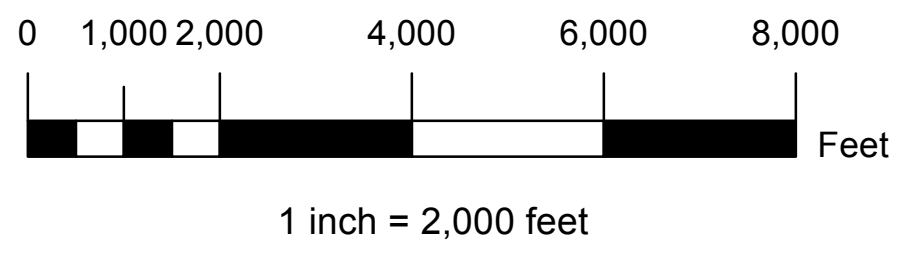
**ENVIRONMENTAL FEATURES - MAP 5B
FOREST, GRASSLANDS,
WETLANDS & OPEN SPACE
TOWNSHIP OF ALLOWAY
SALEM COUNTY
WASTEWATER MANAGEMENT PLAN
SALEM COUNTY, NEW JERSEY**



**SALEM COUNTY DEPARTMENT OF
PLANNING AND AGRICULTURE**
110 FIFTH STREET
SALEM, NEW JERSEY

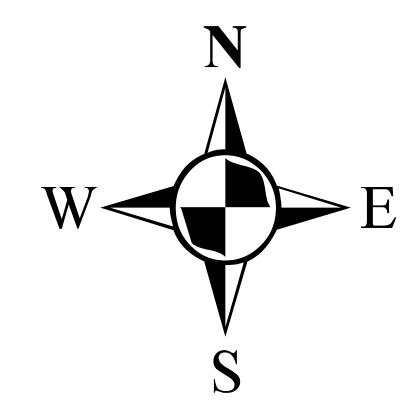
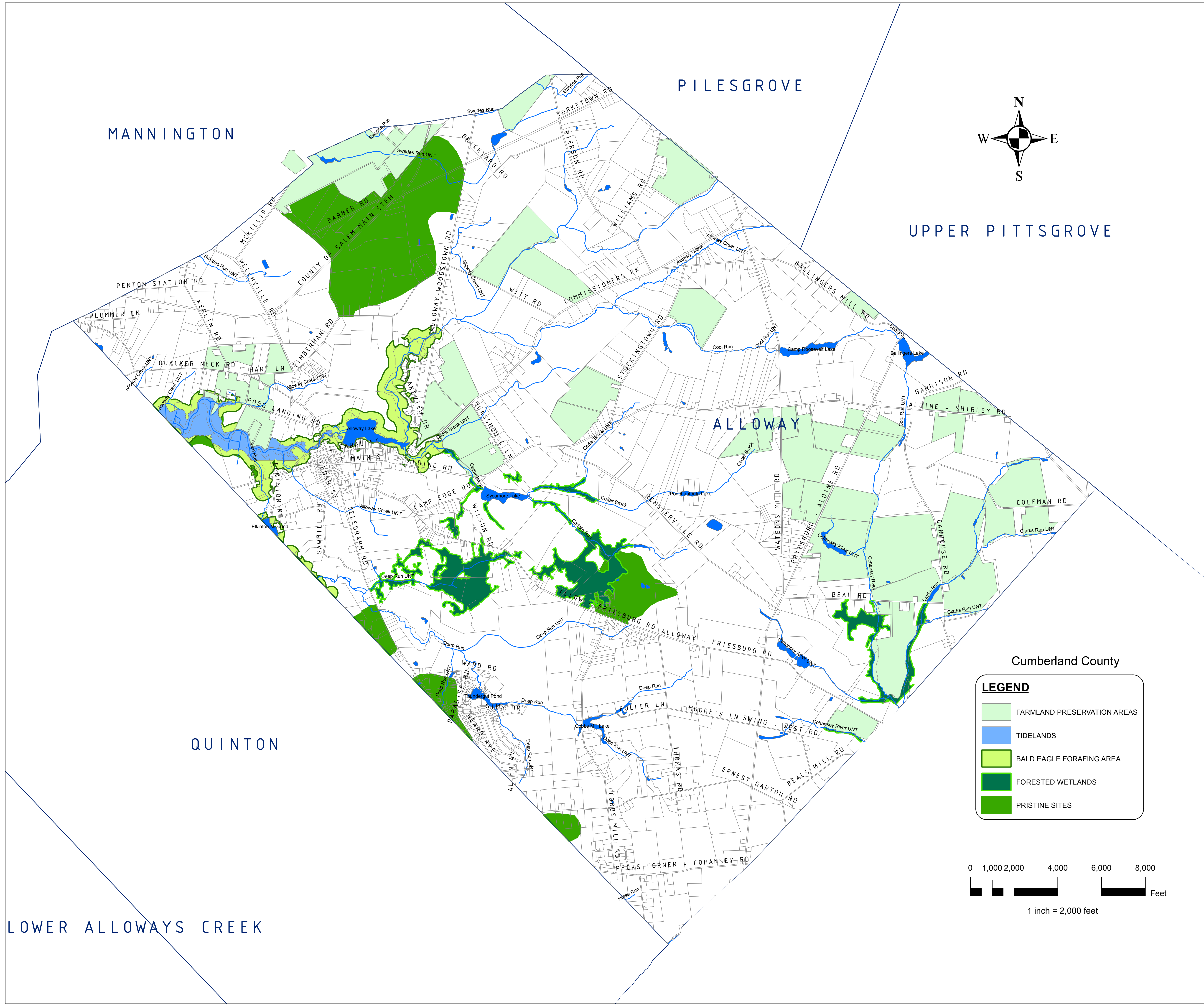
LEGEND

- OPENSACE
- FOREST (RANK 3,4,5)
- GRASSLAND (RANK 3,4,5)
- WETLANDS



SICKELS & ASSOCIATES INC.
SHERWOOD MEWS
833 KINGS HIGHWAY
WOODBURY, NEW JERSEY 08096-3110
NJ CERTIFICATE OF AUTHORIZATION
No. GA27994900
856-848-6800
FAX 848-8520

DRAWN BY: DJP	DATE: 2-16-11	SHEET: 1 of 1
CHECKED BY: DSP	DWG: F-SALEM WMP	FILE: 5363

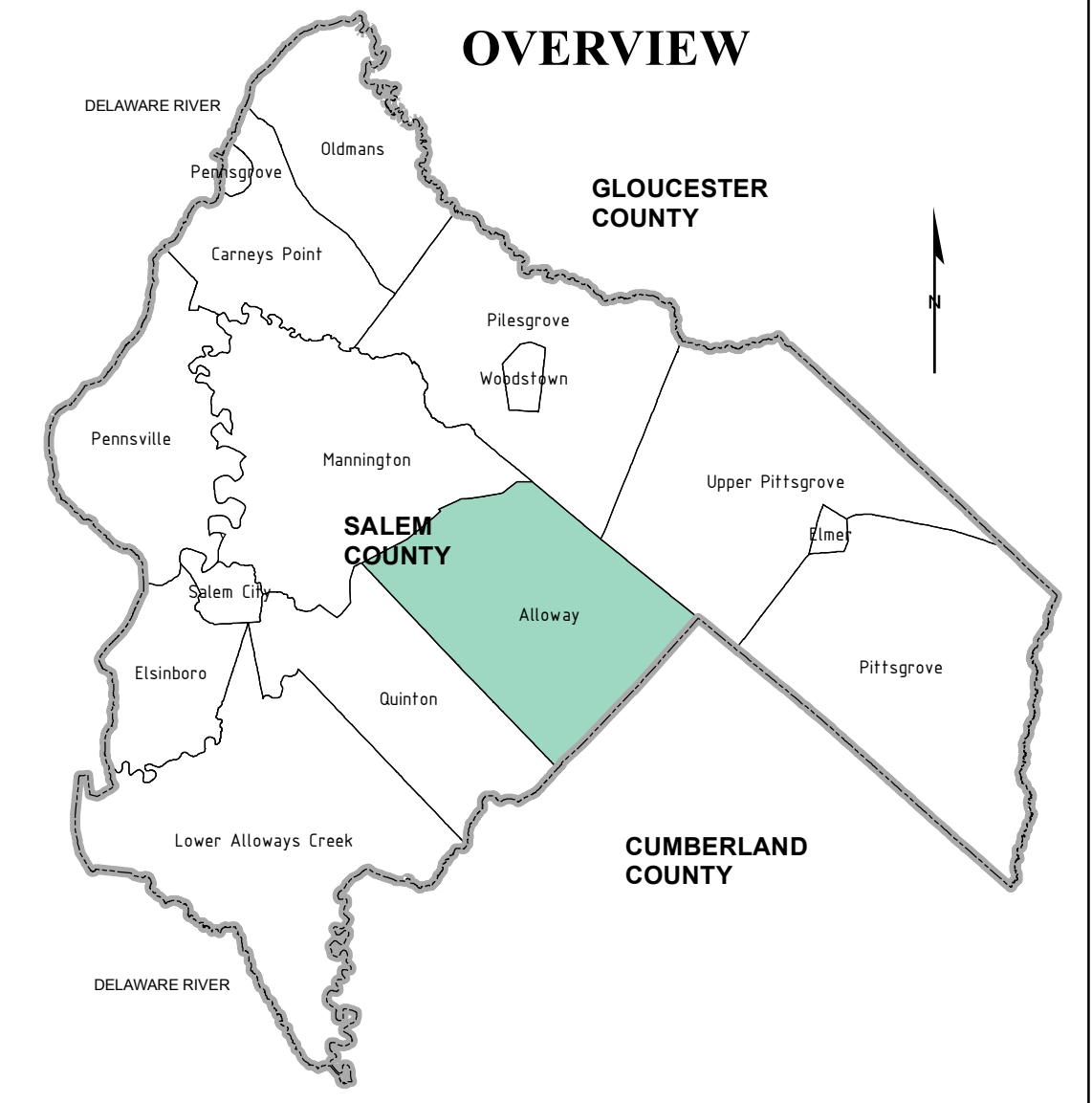
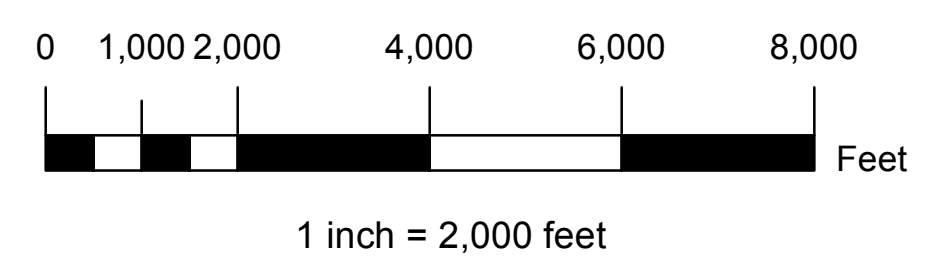


UPPER PITTS GROVE

Cumberland County

LEGEND

- FARMLAND PRESERVATION AREAS
- TIDELANDS
- BALD EAGLE FORAGING AREA
- FORESTED WETLANDS
- PRISTINE SITES

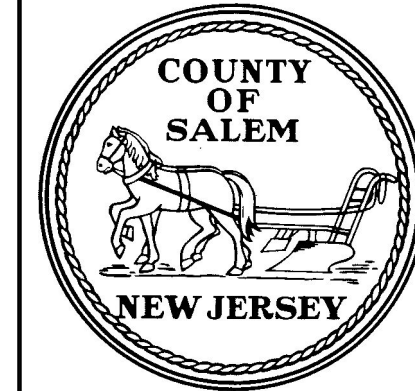


NOTES:

"THIS (MAP/PUBLICATION/REPORT) WAS DEVELOPED USING NEW JERSEY DEPARTMENT OF ENVIRONMENTAL PROTECTION GEOGRAPHIC INFORMATION SYSTEM DIGITAL DATA, BUT THIS SECONDARY PRODUCT HAS NOT BEEN VERIFIED BY NJDEP AND IS NOT STATE-AUTHORIZED."

NO.	DATE	REVISION	BY:

ENVIRONMENTAL FEATURES - MAP 5C FORESTED WETLANDS, BALD EAGLE FORAGING, NATURAL HERITAGE PRIORITY AREAS, FARMLAND PRESERVATION, TIDELANDS AREAS
TOWNSHIP OF ALLOWAY
 SALEM COUNTY
 WASTEWATER MANAGEMENT PLAN
 SALEM COUNTY, NEW JERSEY



SALEM COUNTY DEPARTMENT OF PLANNING AND AGRICULTURE
 110 FIFTH STREET
 SALEM, NEW JERSEY

SICKELS & ASSOCIATES INC.

SHERWOOD MEWS
 833 KINGS HIGHWAY
 WOODBURY, NEW JERSEY 08096-3110
 NJ CERTIFICATE OF AUTHORIZATION
 No. GA21994903 856-848-6800
 FAX 848-8520

DRAWN BY: DJP	DATE: 2-16-11	SHEET: 1 of 1
CHECKED BY: DSP	DWG: F-SALEM WMP	FILE: 5363

LOWER ALLOWAYS CREEK

MANNINGTON

PILESGROVE

ALLOWAY

QUINTON