

NOTES:

BASEMAP INFORMATION INCLUDING PARCELS, ROADS AND MUNICIPAL BOUNDARY TAKEN FROM THE SALEM COUNTY DATABASE FILE.
 THIS (MAP/PUBLICATION/REPORT) WAS DEVELOPED USING NEW JERSEY DEPARTMENT OF ENVIRONMENTAL PROTECTION GEOGRAPHIC INFORMATION SYSTEM DIGITAL DATA, BUT THIS SECONDARY PRODUCT HAS NOT BEEN VERIFIED BY NJDEP AND IS NOT STATE-AUTHORIZED.

NO.	DATE	REVISION	BY:

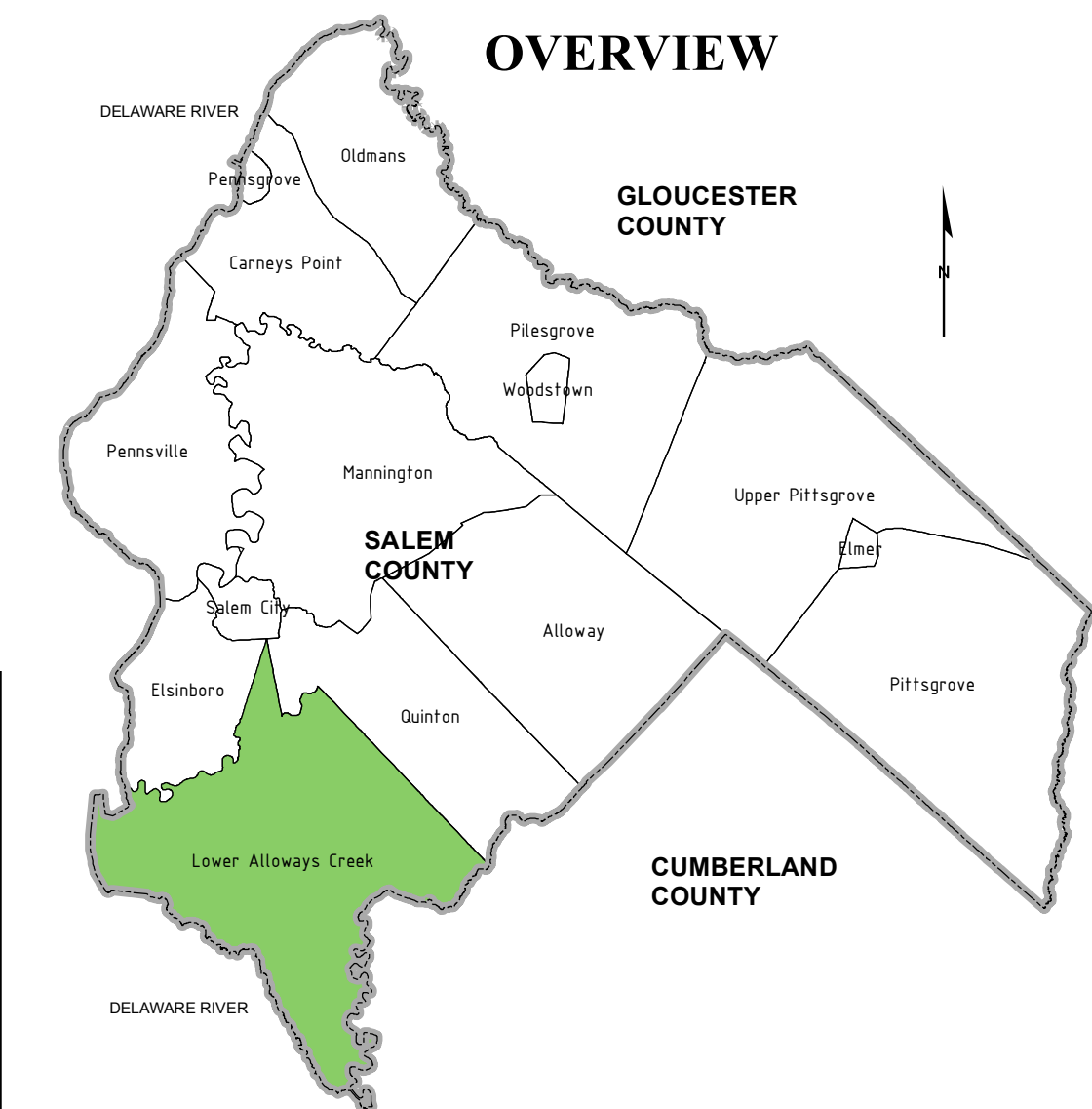
**WASTEWATER MANAGEMENT PLAN
 PLANNING AREA - MAP 1
 TOWNSHIP OF LOWER ALLOWAYS CREEK
 SALEM COUNTY
 WASTEWATER MANAGEMENT PLAN
 SALEM COUNTY, NEW JERSEY**

SALEM COUNTY DEPARTMENT OF PLANNING AND AGRICULTURE
 110 FIFTH STREET
 SALEM, NEW JERSEY

SICKELS & ASSOCIATES, INC.
 SHERWOOD MEWS
 833 KINGS HIGHWAY
 WOODBURY, NEW JERSEY 08096-3110
 NJ CERTIFICATE OF AUTHORIZATION
 No. GA27994903 856-848-6800
 FAX 848-8520

DRAWN BY: DJP	DATE: 2-24-12	SHEET: 1 of 1
CHECKED BY: DSP	DWG: F-SALEM WMP	FILE: 5363

New Table #	Summary of information from Available DEP Sources August, 2012		
	NJPDES	Facility Name	DIS TYPE
Lower Alloways Creek Township			
11	NJ0050423	Lower Alloways Ck - Hancocks Bridge	SW
12	NJ0062201	Lower Alloways Ck - Canton Village	SW
13	NJG0112666	Meadowview Acres Campground	T1
14	NJ0005622	PSE&G - Salem NGS	SW
15	NJ0025411	PSE&G - Hope Creek NGS	SW



NOTES:

"LOCATIONS OF FUTURE PUMP STATIONS, MAJOR INTERCEPTORS, AND TRUNK SEWERS ARE BEING PROVIDED FOR GENERAL INFORMATION ONLY AND WILL NOT SERVE AS THE BASIS FOR ANY FUTURE CONSISTENCY DETERMINATIONS OR PERMIT REVIEWS UNLESS THE PUMP STATION, MAJOR INTERCEPTOR OR TRUNK SEWER IS PART OF A STATE OR FEDERALLY FUNDED PROJECT."

"ALL EXISTING, NEW, OR EXPANDED INDUSTRIAL PRETREATMENT FACILITIES REQUIRING SIGNIFICANT INDIRECT USER (SIU) PERMITS AND/OR TREATMENT WORKS APPROVALS, AND WHICH ARE LOCATED WITHIN THE SPECIFIED SEWER SERVICE AREA, IS DEEMED TO BE CONSISTENT."

DATABASE FILES FOR THE SANITARY SEWER MAINS, MANHOLES & PUMP STATION LOCATIONS WERE RECEIVED FROM THE TOWNSHIP OF LOWER ALLOWAYS CREEK.

BASEMAP INFORMATION INCLUDING PARCELS, ROADS AND MUNICIPAL BOUNDARY TAKEN FROM THE SALEM COUNTY DATABASE FILE.

"THIS (MAP/PUBLICATION/REPORT) WAS DEVELOPED USING NEW JERSEY DEPARTMENT OF ENVIRONMENTAL PROTECTION GEOGRAPHIC INFORMATION SYSTEM DIGITAL DATA, BUT THIS SECONDARY PRODUCT HAS NOT BEEN VERIFIED BY NJDEP AND IS NOT STATE-AUTHORIZED."

NO.	DATE	REVISION	BY:
1.	12-18-13	REV NJPDES-T1 AREAS & TABLE PER NJDEP COMMENTS	DJP

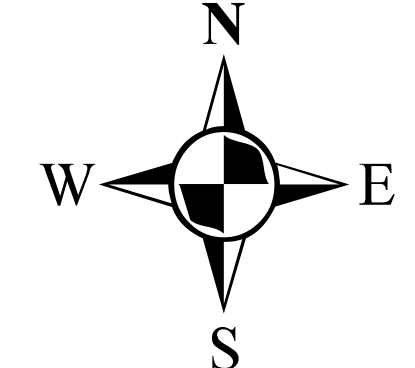
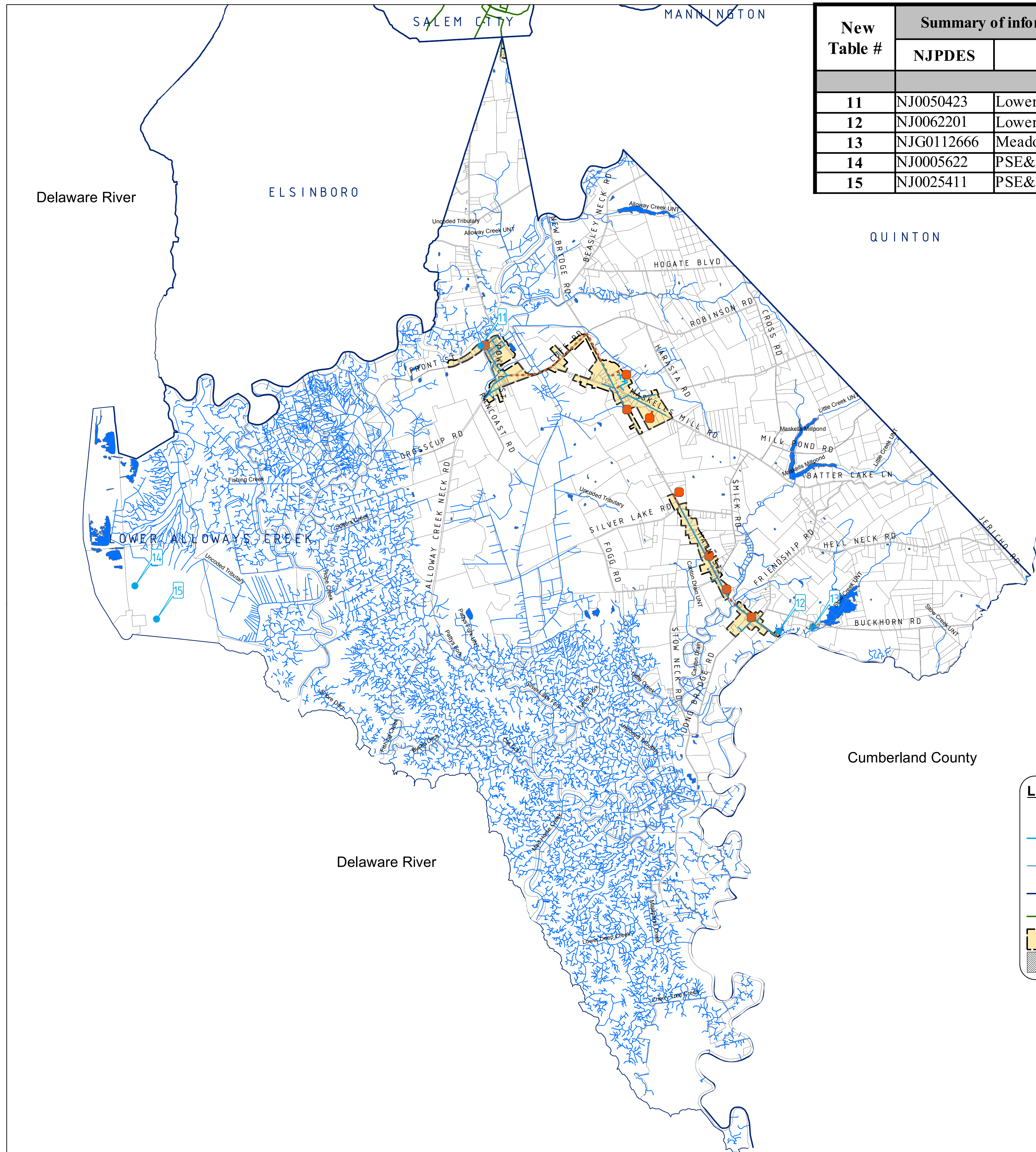
EXISTING FACILITIES AND SERVICE AREA - MAP 2

TOWNSHIP OF LOWER ALLOWAYS CREEK
SALEM COUNTY
WASTEWATER MANAGEMENT PLAN
SALEM COUNTY, NEW JERSEY



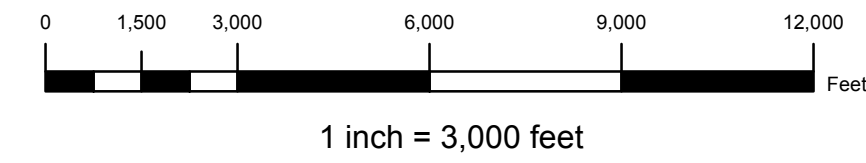
SICKELS & ASSOCIATES INC.
SHERWOOD MEWS
833 KINGS HIGHWAY
WOODBURY, NEW JERSEY 08096-3110
NJ CERTIFICATE OF AUTHORIZATION
No. GA27994900
856-848-6800
FAX 848-8520

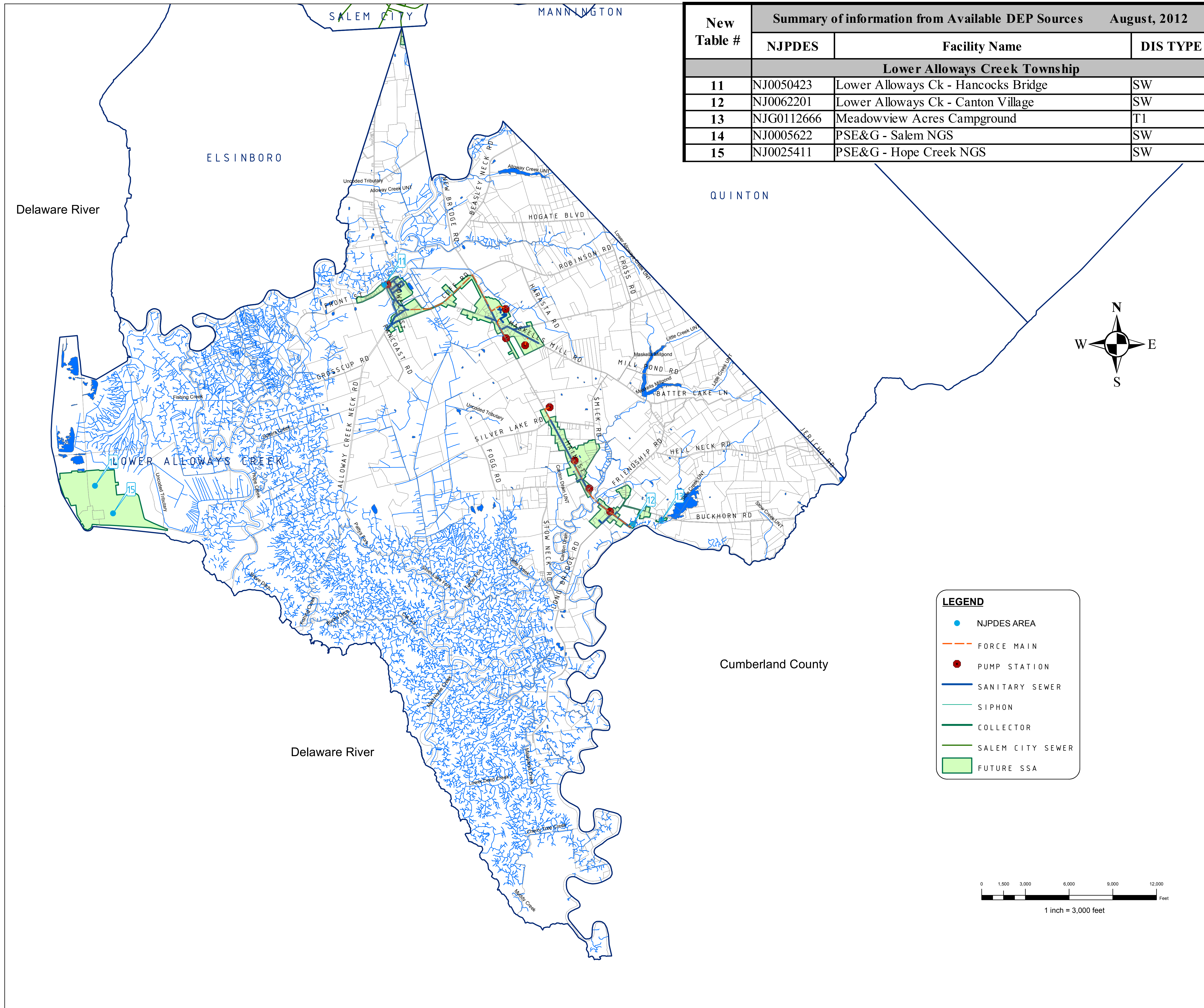
DRAWN BY: DJP	DATE: 2-24-12	SHEET: 1 of 1
CHECKED BY: DSP	DWG: F-SALEM WMP	FILE: 5363



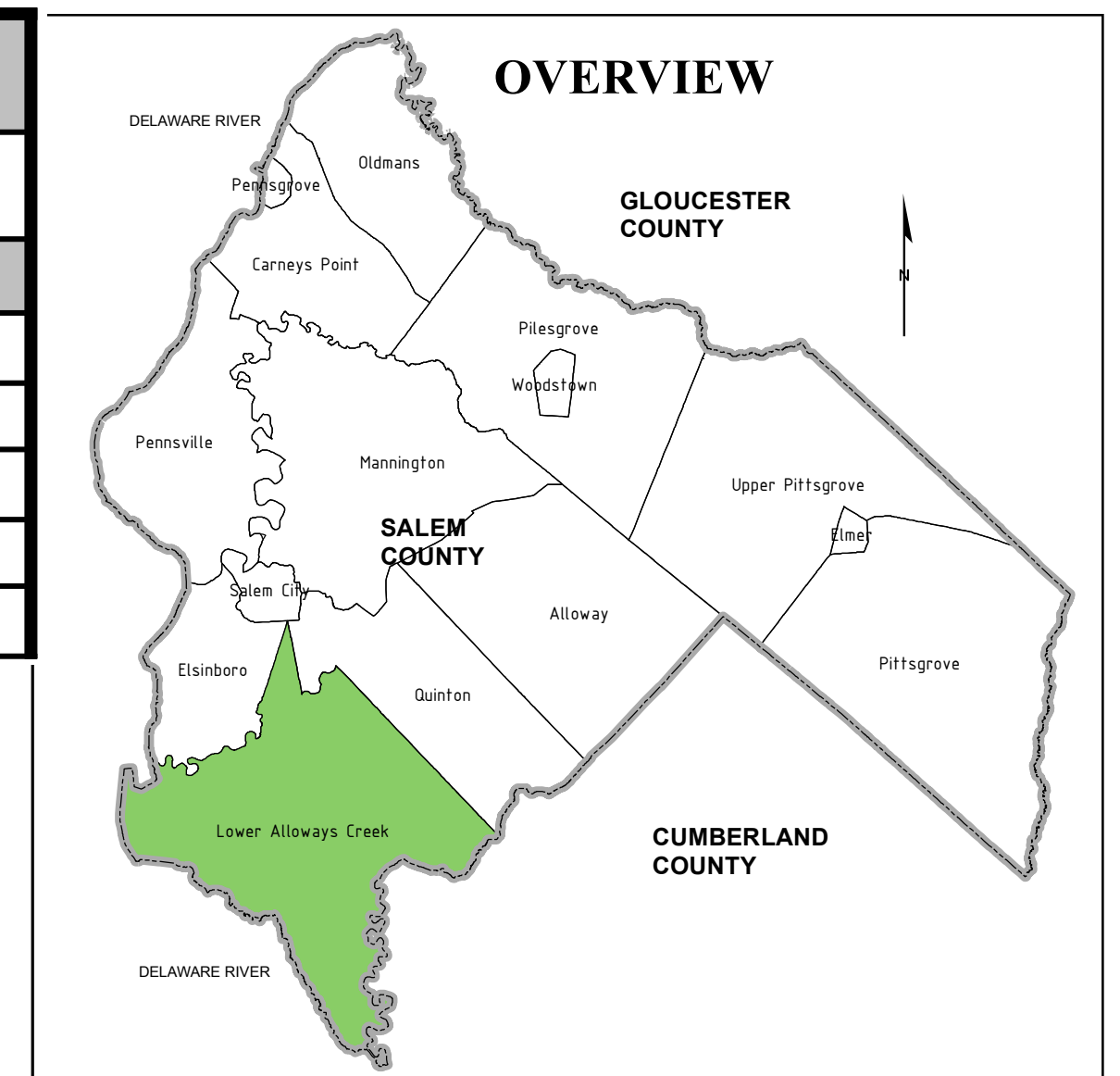
LEGEND

- PUMP STATION
- SEWER
- SIPHON
- SEWER MAINS
- SALEM CITY SEWER
- EXISTING SEWER SERVICE AREA
- EXISTING NJPDES AND T-1 AREAS





New Table #	Summary of information from Available DEP Sources August, 2012		
	NJPDES	Facility Name	DIS TYPE
Lower Alloways Creek Township			
11	NJ0050423	Lower Alloways Ck - Hancocks Bridge	SW
12	NJ0062201	Lower Alloways Ck - Canton Village	SW
13	NJG0112666	Meadowview Acres Campground	T1
14	NJ0005622	PSE&G - Salem NGS	SW
15	NJ0025411	PSE&G - Hope Creek NGS	SW



NOTES:

"PLEASE NOTE THAT WHERE THE VISUAL DEPICTION OF SSA DOES NOT EXPLICITLY INDICATE THE SPECIFIC SEWER SERVICE AREA ASSOCIATED WITH THE WASTEWATER TREATMENT FACILITIES, THE STATEWIDE DIGITIZED SEWER SERVICE AREA MAPPING IS AVAILABLE FOR VIEWING ON NJ GEO-WEB AT [HTTP://WWW.NJ.GOV/DEP/GIS/DEPSTATESHP.HTM](http://www.nj.gov/dep/gis/depstateshp.html). IT IS ALSO AVAILABLE FOR DOWNLOAD TO USE IN ARCGIS AT [HTTP://WWW.NJ.GOV/DEP/GIS/STATESHP.HTML](http://www.nj.gov/dep/gis/stateshp.html)."

THE SEWER SERVICE AREA IDENTIFIED ON THIS MAP HAS BEEN REVIEWED BY THE MUNICIPALITY, COUNTY AND DEP. THIS AREA HAS BEEN DEFINED BASED ON ENVIRONMENTAL CONSTRAINTS' LANDSCAPE PROJECT AREA GIS LAYERS' AVAILABLE FROM THE DEPARTMENT TO CLARIFY AREAS OF POTENTIAL SEWER SERVICE. THE TREATMENT FACILITY FOR THE SEWER SERVICE AREA DOES NOT GUARANTEE THAT SUFFICIENT WASTEWATER TREATMENT CAPACITY WILL BE AVAILABLE FOR THE COMPLETE BUILD OUT OF THE AREA.

"LOCATIONS OF FUTURE PUMP STATIONS, MAJOR INTERCEPTORS AND TRUNK SEWERS ARE BEING PROVIDED FOR GENERAL INFORMATION ONLY AND WILL NOT SERVE AS THE BASIS FOR ANY FUTURE CONSISTENT DETERMINATIONS OR PERMIT REVIEWS UNLESS THE PUMP STATION, MAJOR INTERCEPTOR OR TRUNK SEWER IS PART OF A STATE OR FEDERALLY FUNDED PROJECT."

"ALL EXISTING NEW OR EXPANDED INDUSTRIAL PRETREATMENT FACILITIES REQUIRING SIGNIFICANT INDIRECT USER (SUI) PERMITS AND/OR TREATMENT WORKS APPROVALS, AND WHICH ARE LOCATED WITHIN THE SPECIFIED SEWER SERVICE AREA, IS DEEMED TO BE CONSISTENT."

"PRE-EXISTING GRANT CONDITIONS AND REQUIREMENTS (FROM FEDERAL AND STATE GRANTS OR LOANS FOR SEWERAGE FACILITIES) WHICH PROVIDE FOR RESTRICTION OF SEWER SERVICE TO ENVIRONMENTALLY SENSITIVE AREAS, ARE UNAFFECTED BY ADOPTION OF THIS WMP AND COMPLIANCE IS REQUIRED. PLEASE SEE MUNICIPAL WMP CHAPTERS FOR THE EXISTENCE OF ANY APPLICABLE ENVIRONMENTALLY SENSITIVE AREAS IN WHICH FEDERAL 201 GRANT LIMITATIONS PROHIBIT THE EXTENSION OF SEWER SERVICE."

"INDIVIDUAL SUBSURFACE SEWAGE DISPOSAL SYSTEMS (ISSDS) FOR INDIVIDUAL RESIDENCES CAN ONLY BE CONSTRUCTED IN DEPICTED SEWER SERVICE AREAS IF LEGALLY ENFORCEABLE GUARANTEES ARE PROVIDED, BEFORE SUCH CONSTRUCTION, THAT USE OF SUCH SYSTEMS WILL BE DISCONTINUED WHEN THE DEPICTED SEWER SERVICE BECOMES AVAILABLE. THIS APPLIES TO ISSDS THAT REQUIRE CERTIFICATION FROM THE DEPARTMENT UNDER THE REALTY IMPROVEMENT SEWERAGE AND FACILITIES ACT (N.J.A.C. 7:26-11-23) OR INDIVIDUAL TREATMENT WORKS APPROVAL OR NEW JERSEY POLLUTANT DISCHARGE ELIMINATION SYSTEM PERMITS (UNDER N.J.A.C. 7:14A). IT ALSO APPLIES TO ISSDS WHICH REQUIRE ONLY LOCAL APPROVALS."

COMPLIANCE WITH THE CONNECTION REQUIREMENT HAS BEEN DEMONSTRATED THROUGH ADOPTION OF [NAME OF MUNICIPALITY OR SEWERAGE AUTHORITY] ORDINANCE [INSERT ORDINANCE #].

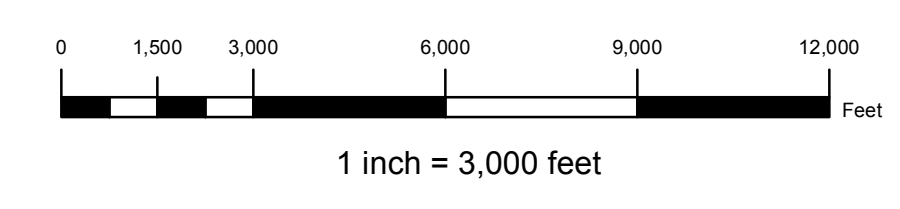
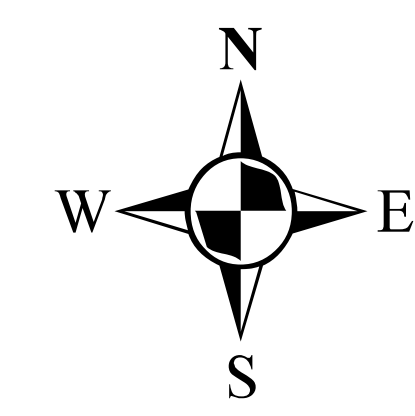
DATABASE FILES FOR THE SANITARY SEWER MAINS, MANHOLES & PUMP STATION LOCATIONS WERE RECEIVED FROM THE TOWNSHIP OF LOWER ALLOWAYS CREEK. IN ADDITION TO THE TEXT FOUND IN THE WMP TEMPLATE DOCUMENT THE FOLLOWING IS NEEDED: "PROPOSED DEVELOPMENTS TYING INTO EXISTING AND PROPOSED SEWER SERVICE AREAS WHICH REQUIRE COASTAL PERMITS MUST DEMONSTRATE COMPLIANCE WITH ALL APPLICABLE SECTIONS OF THE COASTAL ZONE MANAGEMENT RULES INCLUDING, BUT NOT LIMITED TO, WETLANDS (N.J.A.C. 7:7E-3.27), WETLANDS BUFFERS (N.J.A.C. 7:7E-3.38), SECONDARY IMPACTS (N.J.A.C. 7:7E-8.3), PUBLIC FACILITY USE POLICIES (N.J.A.C. 7:7E-7.6), WATER QUALITY (N.J.A.C. 7:7E-8.4), GROUND WATER USE (N.J.A.C. 7:7E-8.6) AND THE POLICIES UNDER GENERAL LAND AREAS RULES, SUBCHAPTERS 5, 5A AND 5B."

BASEMAP INFORMATION INCLUDING PARCELS, ROADS AND MUNICIPAL BOUNDARY TAKEN FROM THE SALEM COUNTY DATABASE FILE.

"THIS (MAP/PUBLICATION/REPORT) WAS DEVELOPED USING NEW JERSEY DEPARTMENT OF ENVIRONMENTAL PROTECTION GEOGRAPHIC INFORMATION SYSTEM DIGITAL DATA, BUT THIS SECONDARY PRODUCT HAS NOT BEEN VERIFIED BY NJDEP AND IS NOT STATE-AUTHORIZED."

LEGEND

- NJPDES AREA
- FORCE MAIN
- PUMP STATION
- SANITARY SEWER
- SIPHON
- COLLECTOR
- SALEM CITY SEWER
- FUTURE SSA



2.	9-2-15	ADDED NOTE PER NJDEP COMMENTS	DJP
1.	12-18-13	REV NJPDES-T1 AREAS & TABLE PER NJDEP COMMENTS	DJP
NO.	DATE	REVISION	BY:

REVISIONS

FUTURE SEWER SERVICE AREA - MAP 3

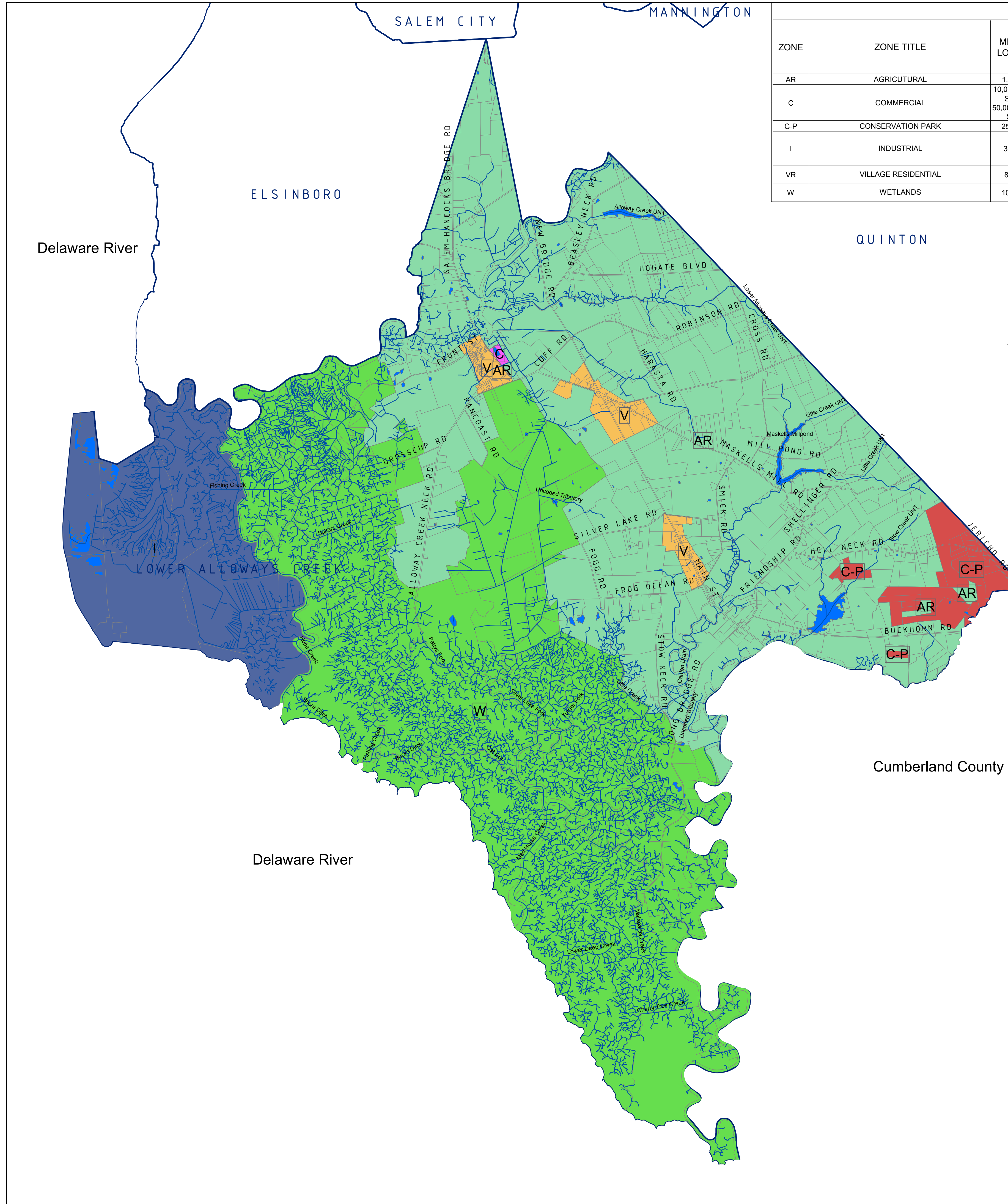
TOWNSHIP OF LOWER ALLOWAYS CREEK
SALEM COUNTY
WASTEWATER MANAGEMENT PLAN
SALEM COUNTY, NEW JERSEY



SICKELS & ASSOCIATES, INC.

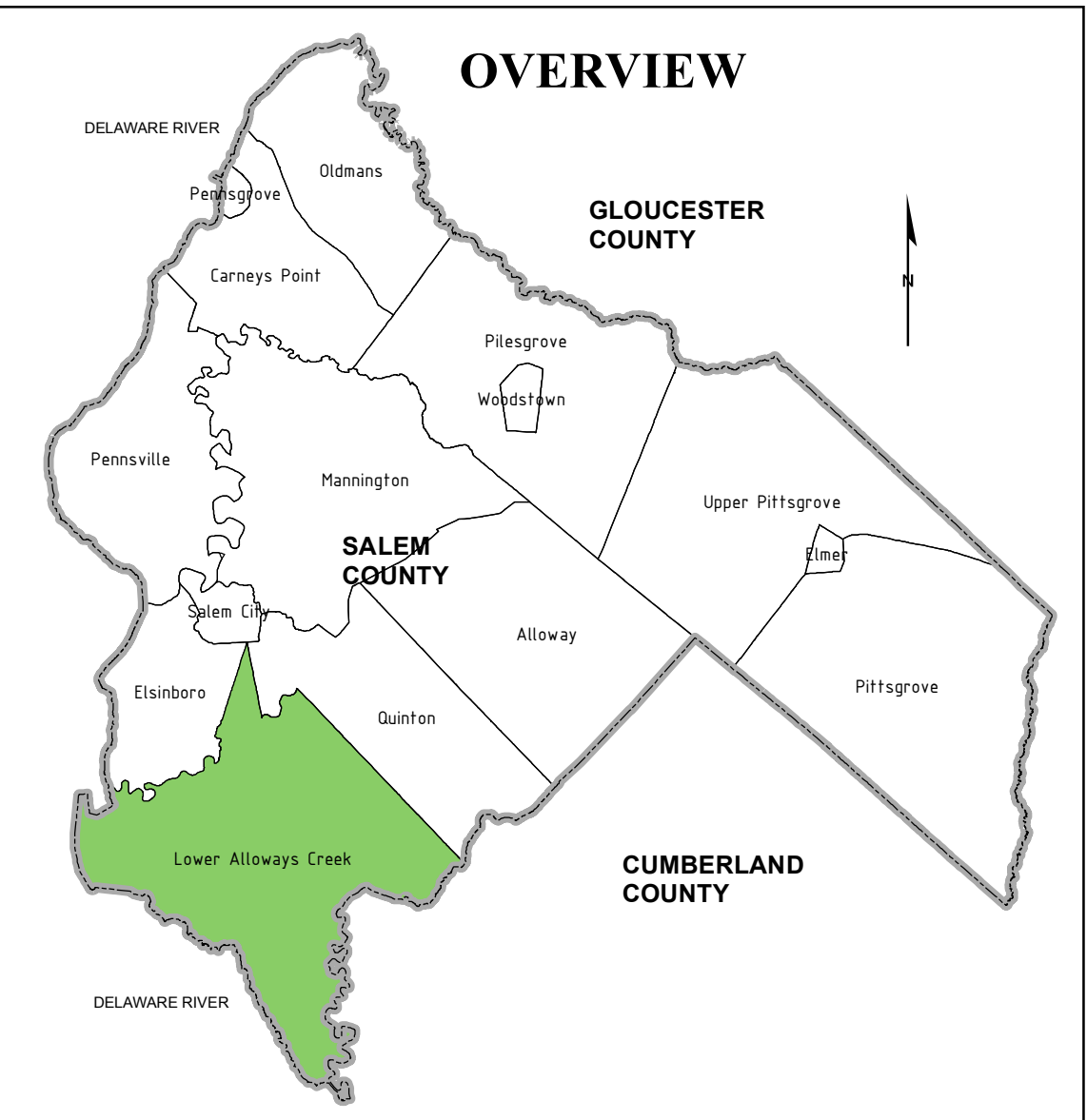
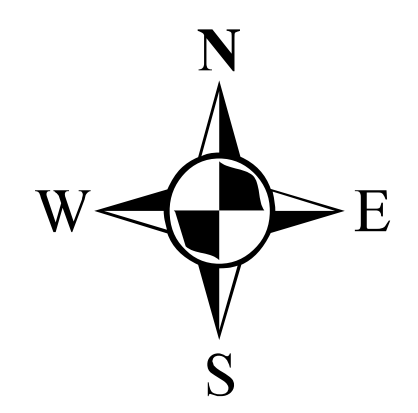
SHERWOOD MEWS
833 KINGS HIGHWAY
WOODBURY, NEW JERSEY 08096-3110
NJ CERTIFICATE OF AUTHORIZATION
No. GA27994900
856-848-6800
FAX 848-8520

DRAWN BY: DJP	DATE: 2-24-12	SHEET: 1 of 1
CHECKED BY: DSP	DWG: F-SALEM WMP	FILE: 5363



ZONING SUMMARY TABLE

ZONE	ZONE TITLE	MINIMUM LOT AREA	MINIMUM LOT WIDTH	MINIMUM LOT DEPTH	MINIMUM FRONT YARD SETBACK	MINIMUM SIDE YARD SETBACK	MINIMUM REAR YARD SETBACK	MAXIMUM BUILDING HEIGHT	FLOORE AREA RATIO (FAR)	MAXIMUM LOT COVERAGE
AR	AGRICULTURAL	1.5 ACRE	200'	200'	75'/100'	20'	50'			10%
C	COMMERCIAL	10,000 SF ONE STORY , 50,000 SF TWO STORY						35'		35%
C-P	CONSERVATION PARK	25 ACRES	250'	200'	150'	100'	300'	35'	0.22 ONE STORY 0.30 MULTI-STORY	1.5%
I	INDUSTRIAL	3 ACRES	200'	200'	75'	40'	30'	45'		50%
VR	VILLAGE RESIDENTIAL	8,500 SF	60'	125'	25'	10'	30'	35'		25%RES / 35% NON
W	WETLANDS	10 ACRES	150'	200'	50'	20'	50'	35'		15%



NOTES:

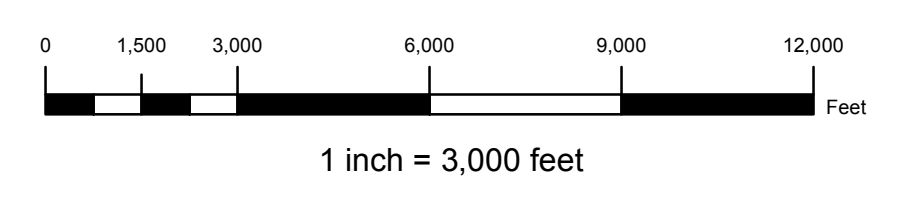
ZONING MAP TAKEN FROM SALEM COUNTY DATABASE FILE DATED 12-8-10. ZONING MAP DATED 6-13-03. ORDINANCE INFORMATION TAKEN FROM THE LOWER ALLOWAYS CREEK ORDINANCE DATED 10-01.

BASEMAP INFORMATION INCLUDING PARCELS, ROADS AND MUNICIPAL BOUNDARY TAKEN FROM THE SALEM COUNTY DATABASE FILE.

"THIS (MAP/PUBLICATION/REPORT) WAS DEVELOPED USING NEW JERSEY DEPARTMENT OF ENVIRONMENTAL PROTECTION GEOGRAPHIC INFORMATION SYSTEM DIGITAL DATA, BUT THIS SECONDARY PRODUCT HAS NOT BEEN VERIFIED BY NJDEP AND IS NOT STATE-AUTHORIZED."

LEGEND

- AR - AGRICULTURAL-RESIDENTIAL
- C - COMMERCIAL
- C-P - CONSERVATION PARK
- I - INDUSTRIAL
- V - VILLAGE RESIDENTIAL
- W - WETLANDS



NO.	DATE	REVISION	BY:

ZONING - MAP 4

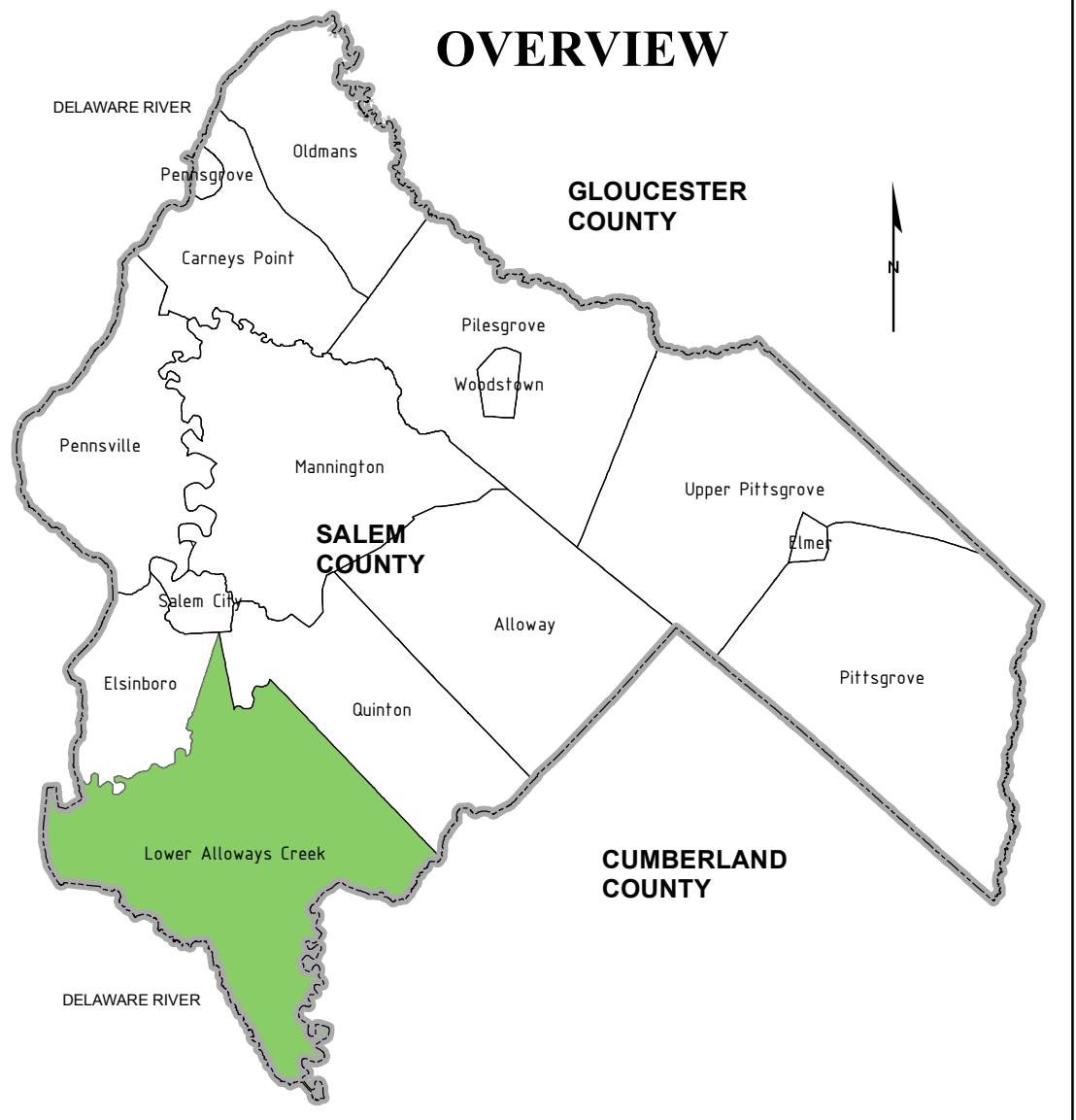
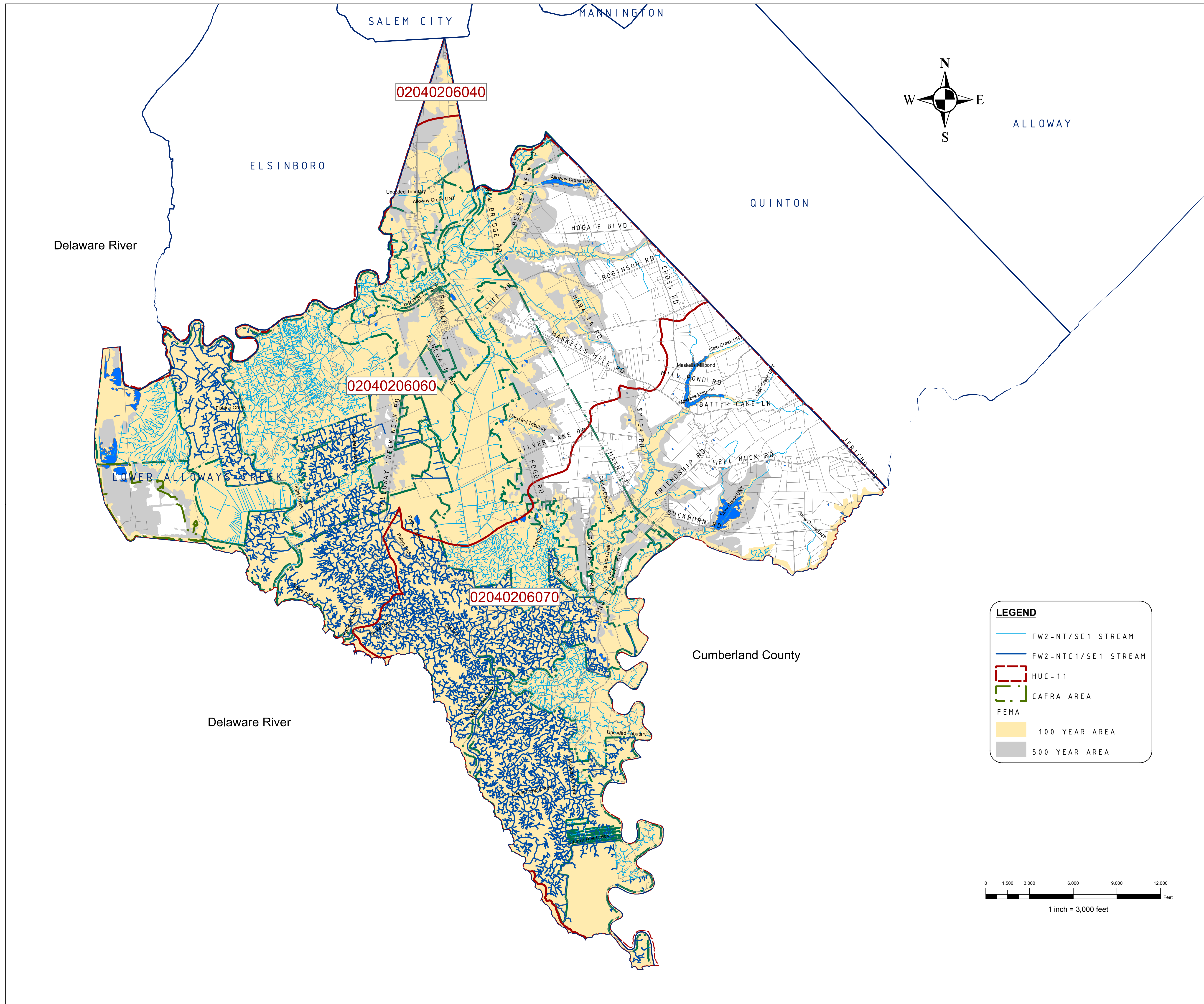
TOWNSHIP OF LOWER ALLOWAYS CREEK
SALEM COUNTY
WASTEWATER MANAGEMENT PLAN
SALEM COUNTY, NEW JERSEY

SALEM COUNTY DEPARTMENT OF PLANNING AND AGRICULTURE
110 FIFTH STREET
SALEM, NEW JERSEY

SICKELS & ASSOCIATES INC.

SHERWOOD MEWS
833 KINGS HIGHWAY
WOODBURY, NEW JERSEY 08096-3110
NJ CERTIFICATE OF AUTHORIZATION
No. GA27949601
856-848-6800
FAX 848-8520

DRAWN BY: DJP	DATE: 2-24-12	SHEET: 1 of 1
CHECKED BY: DSP	DWG: F-SALEM WMP	FILE: 5363



NOTES:

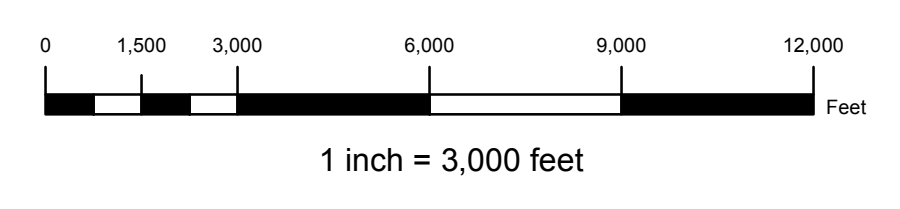
"DEVELOPMENT IN AREAS MAPPED AS WETLANDS, FLOOD PRONE AREAS, SUITABLE HABITAT FOR ENDANGERED AND THREATENED SPECIES AS IDENTIFIED ON THE DEPARTMENT'S LANDSCAPE MAPS OF HABITAT FOR ENDANGERED, THREATENED AND OTHER PRIORITY WILDLIFE AS RANK 3.4 AND 5, NATURAL HERITAGE PRIORITY SITES, RIPARIAN ZONES, STEEP SLOPES, OR DESIGNATED RIVER AREAS MAY BE SUBJECT TO SPECIAL REGULATION UNDER FEDERAL OR STATE STATUTES OR RULES, AND THAT INTERESTED PERSONS SHOULD CHECK WITH THE DEPARTMENT FOR THE LATEST INFORMATION. DEPICTION OF ENVIRONMENTAL FEATURES SHALL BE FOR GENERAL INFORMATION PURPOSES ONLY, AND SHALL NOT BE CONSTRUED TO DEFINE THE LEGAL GEOGRAPHIC JURISDICTION OF SUCH STATUTES OR RULES"

BASEMAP INFORMATION INCLUDING PARCELS, ROADS AND MUNICIPAL BOUNDARY TAKEN FROM THE SALEM COUNTY DATABASE FILE.

"THIS (MAP/PUBLICATION/REPORT) WAS DEVELOPED USING NEW JERSEY DEPARTMENT OF ENVIRONMENTAL PROTECTION GEOGRAPHIC INFORMATION SYSTEM DIGITAL DATA, BUT THIS SECONDARY PRODUCT HAS NOT BEEN VERIFIED BY NJDEP AND IS NOT STATE-AUTHORIZED."

LEGEND

- FW2-NT/SE1 STREAM
- FW2-NTC1/SE1 STREAM
- HUC-11
- CAFRA AREA
- FEMA**
- 100 YEAR AREA
- 500 YEAR AREA



NO.	DATE	REVISION	BY:
REVISIONS			

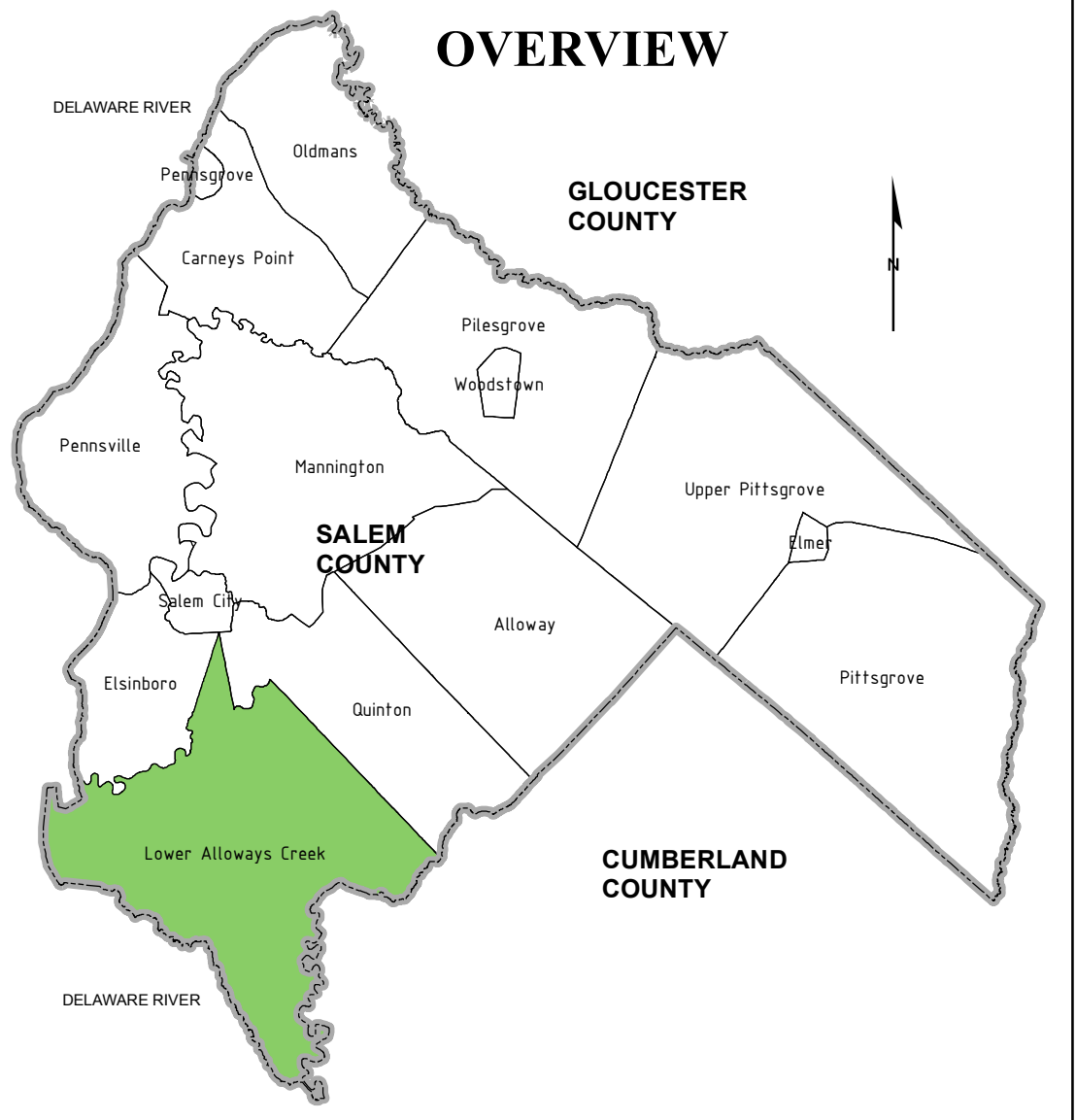
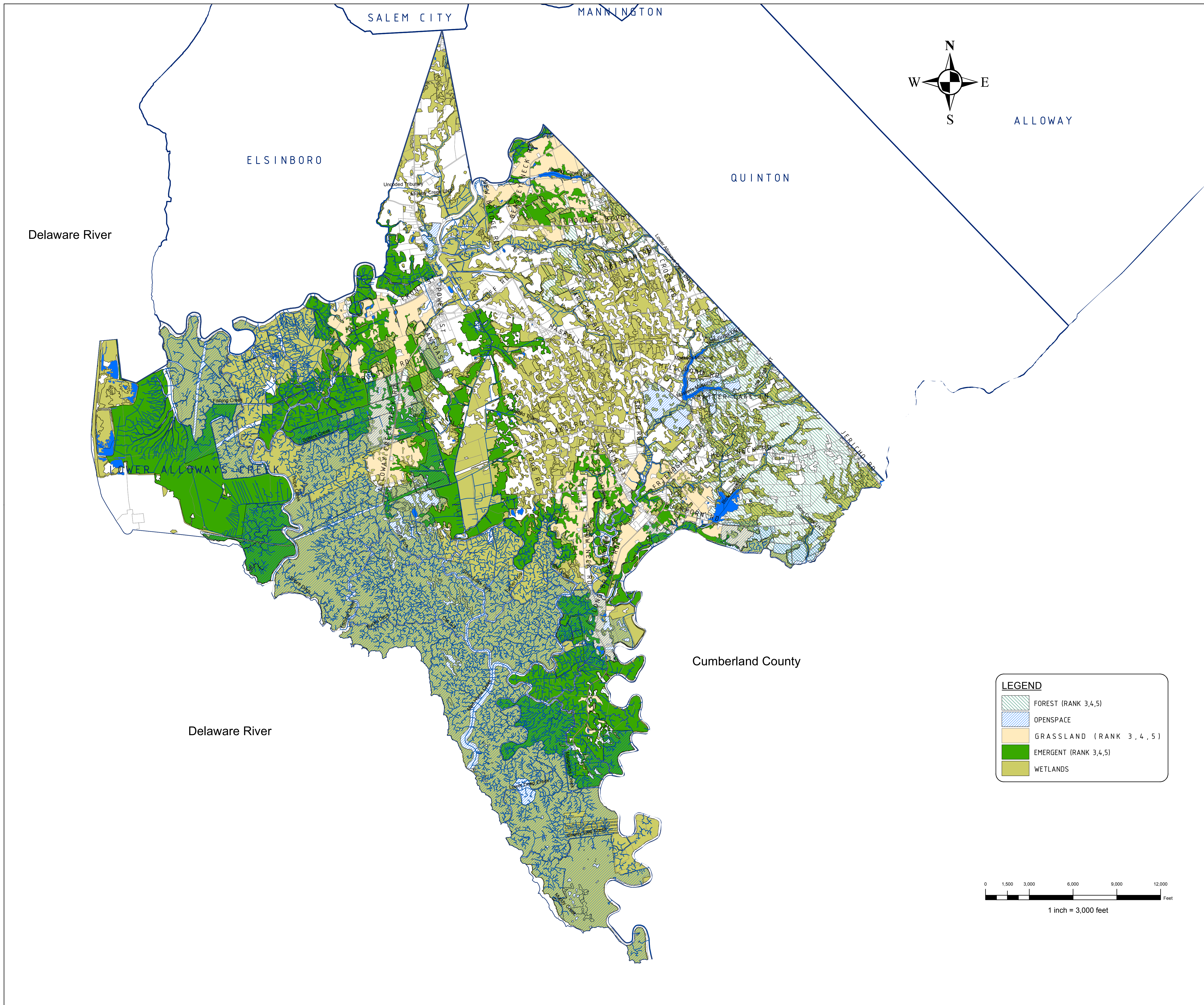
ENVIRONMENTAL FEATURES - MAP 5A CATEGORY ONE STREAMS, CAFRA AREAS, HUC 11, FEMA AREAS
TOWNSHIP OF LOWER ALLOWAYS CREEK
 SALEM COUNTY
 WASTEWATER MANAGEMENT PLAN
 SALEM COUNTY, NEW JERSEY

SALEM COUNTY DEPARTMENT OF PLANNING AND AGRICULTURE
 110 FIFTH STREET
 SALEM, NEW JERSEY

SICKELS & ASSOCIATES, INC.

SHERWOOD MEWS
 833 KINGS HIGHWAY
 WOODBURY, NEW JERSEY 08096-3110
 NJ CERTIFICATE OF AUTHORIZATION
 No. GA27994903 856-848-6800
 FAX 848-8520

DRAWN BY: DJP	DATE: 2-24-12	SHEET: 1 of 1
CHECKED BY: DSP	DWG: F-SALEM WMP	FILE: 5363



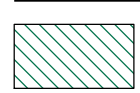
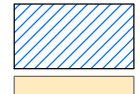


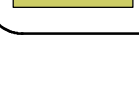
NOTES:

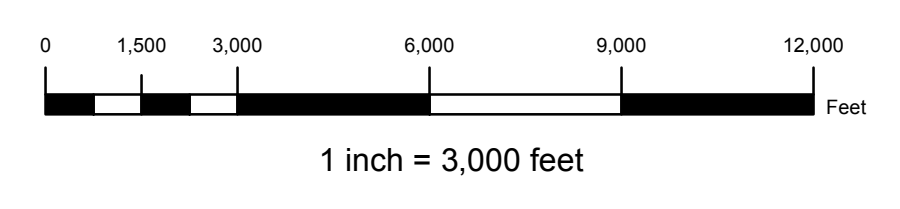
"DEVELOPMENT IN AREAS MAPPED AS WETLANDS, FLOOD PRONE AREAS, SUITABLE HABITAT FOR ENDANGERED AND THREATENED SPECIES AS IDENTIFIED ON THE DEPARTMENT'S LANDSCAPE MAPS OF HABITAT FOR ENDANGERED, THREATENED AND OTHER PRIORITY WILDLIFE AS RANK 3,4, AND 5, NATURAL HERITAGE PRIORITY SITES, RIPARIAN ZONES, STEEP SLOPES, OR DESIGNATED RIVER AREAS MAY BE SUBJECT TO SPECIAL REGULATION UNDER FEDERAL OR STATE STATUTES OR RULES, AND THAT INTERESTED PERSONS SHOULD CHECK WITH THE DEPARTMENT FOR THE LATEST INFORMATION. DEPICTION OF ENVIRONMENTAL FEATURES SHALL BE FOR GENERAL INFORMATION PURPOSES ONLY, AND SHALL NOT BE CONSTRUED TO DEFINE THE LEGAL GEOGRAPHIC JURISDICTION OF SUCH STATUTES OR RULES"

BASEMAP INFORMATION INCLUDING PARCELS, ROADS AND MUNICIPAL BOUNDARY TAKEN FROM THE SALEM COUNTY DATABASE FILE.

"THIS (MAP/PUBLICATION/REPORT) WAS DEVELOPED USING NEW JERSEY DEPARTMENT OF ENVIRONMENTAL PROTECTION GEOGRAPHIC INFORMATION SYSTEM DIGITAL DATA, BUT THIS SECONDARY PRODUCT HAS NOT BEEN VERIFIED BY NJDEP AND IS NOT STATE-AUTHORIZED."

LEGEND

-  FOREST (RANK 3,4,5)
-  OPENSACE
-  GRASSLAND (RANK 3,4,5)
-  EMERGENT (RANK 3,4,5)
-  WETLANDS



NO.	DATE	REVISION	BY:

**ENVIRONMENTAL FEATURES - MAP 5B
GRASSLANDS, EMERGENT, FORESTED,
WETLANDS AND OPEN SPACE AREAS
TOWNSHIP OF LOWER ALLOWAYS CREEK
SALEM COUNTY
WASTEWATER MANAGEMENT PLAN
SALEM COUNTY, NEW JERSEY**

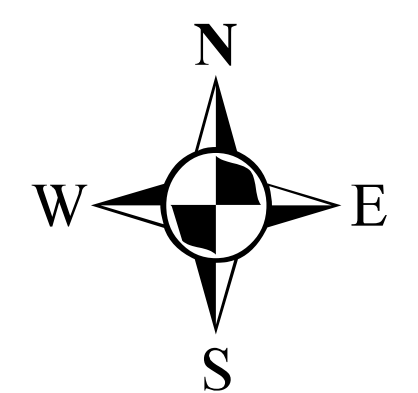
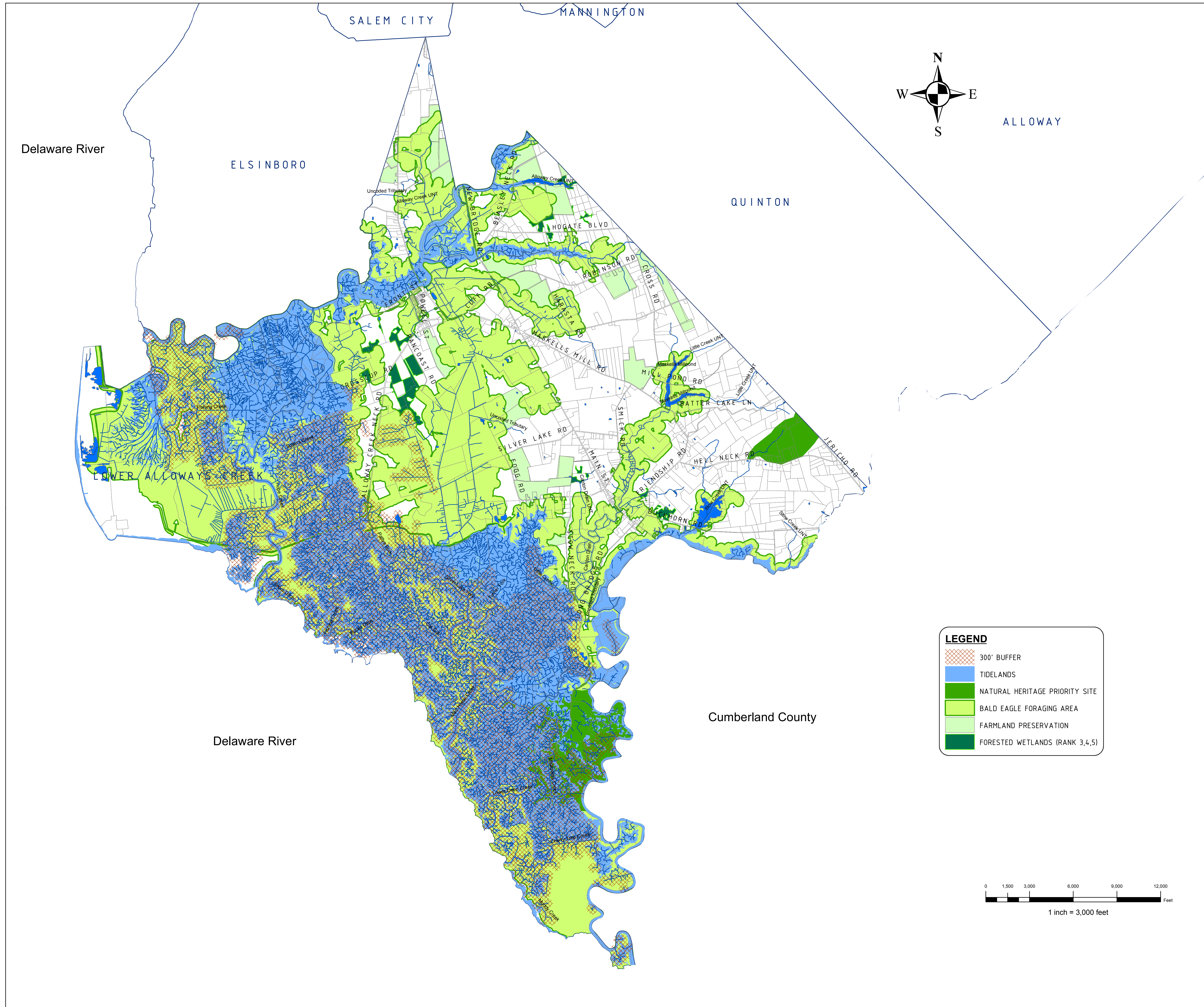


**SALEM COUNTY DEPARTMENT OF
PLANNING AND AGRICULTURE**
110 FIFTH STREET
SALEM, NEW JERSEY

SICKLES & ASSOCIATES, INC.







SHERWOOD MEWS
833 KINGS HIGHWAY
WOODBURY, NEW JERSEY 08096-3110
NJ CERTIFICATE OF AUTHORIZATION
No. GA27994900 856-848-6800
FAX 848-8520

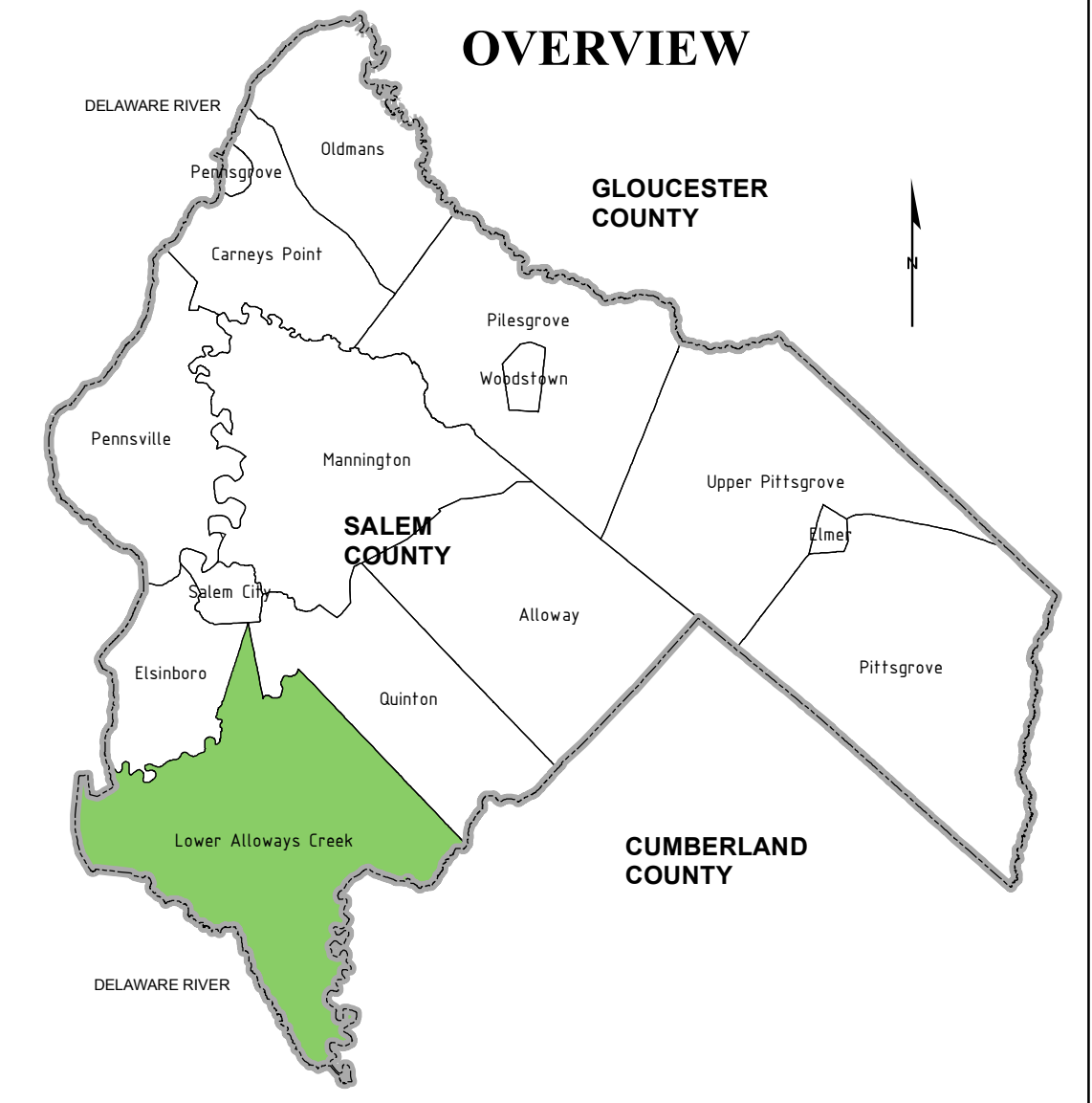
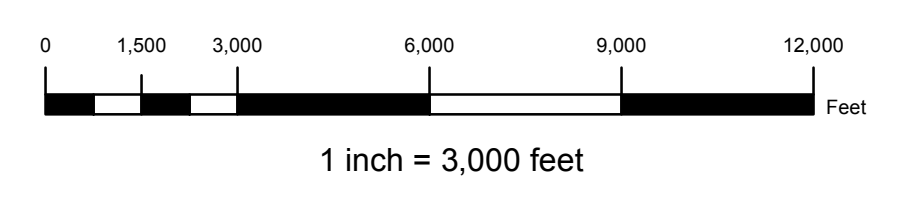
DRAWN BY: DJP	DATE: 2-24-12	SHEET: 1 of 1
CHECKED BY: DSP	DWG: F-SALEM WMP	FILE: 5363



ALLOWAY

LEGEND

-  300' BUFFER
-  TIDELANDS
-  NATURAL HERITAGE PRIORITY SITE
-  BALD EAGLE FORAGING AREA
-  FARMLAND PRESERVATION
-  FORESTED WETLANDS (RANK 3,4,5)



NOTES:

"DEVELOPMENT IN AREAS MAPPED AS WETLANDS, FLOOD PRONE AREAS, SUITABLE HABITAT FOR ENDANGERED AND THREATENED SPECIES AS IDENTIFIED ON THE DEPARTMENT'S LANDSCAPE MAPS OF HABITAT FOR ENDANGERED, THREATENED AND OTHER PRIORITY WILDLIFE AS RANK 3,4, AND 5, NATURAL HERITAGE PRIORITY SITES, RIPARIAN ZONES, STEEP SLOPES, OR DESIGNATED RIVER AREAS MAY BE SUBJECT TO SPECIAL REGULATION UNDER FEDERAL OR STATE STATUTES OR RULES, AND THAT INTERESTED PERSONS SHOULD CHECK WITH THE DEPARTMENT FOR THE LATEST INFORMATION. DEPICTION OF ENVIRONMENTAL FEATURES SHALL BE FOR GENERAL INFORMATION PURPOSES ONLY, AND SHALL NOT BE CONSTRUED TO DEFINE THE LEGAL GEOGRAPHIC JURISDICTION OF SUCH STATUTES OR RULES"

BASEMAP INFORMATION INCLUDING PARCELS, ROADS AND MUNICIPAL BOUNDARY TAKEN FROM THE SALEM COUNTY DATABASE FILE.

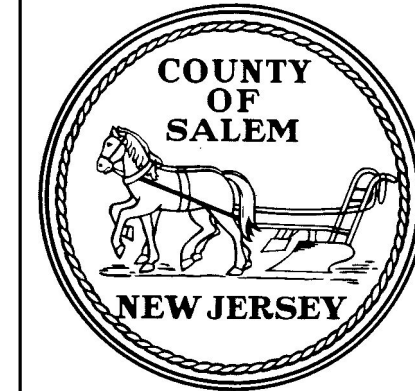
"THIS (MAP/PUBLICATION/REPORT) WAS DEVELOPED USING NEW JERSEY DEPARTMENT OF ENVIRONMENTAL PROTECTION GEOGRAPHIC INFORMATION SYSTEM DIGITAL DATA, BUT THIS SECONDARY PRODUCT HAS NOT BEEN VERIFIED BY NJDEP AND IS NOT STATE-AUTHORIZED."

NO.	DATE	REVISION	BY:
REVISIONS			

ENVIRONMENTAL FEATURES - MAP 5C FORESTED WETLANDS, PRIORITY SITES, BALD EAGLE FORAGING, FARMLAND PRESERVATION, TIDELANDS, 300' STREAM BUFFER

TOWNSHIP OF LOWER ALLOWAYS CREEK

SALEM COUNTY
WASTEWATER MANAGEMENT PLAN
SALEM COUNTY, NEW JERSEY



SALEM COUNTY DEPARTMENT OF PLANNING AND AGRICULTURE
110 FIFTH STREET
SALEM, NEW JERSEY

SICKELS & ASSOCIATES, INC.

SHERWOOD MEWS
833 KINGS HIGHWAY
WOODBURY, NEW JERSEY 08096-3110
NJ CERTIFICATE OF AUTHORIZATION
No. GA27994900
856-848-6800
FAX 848-8520

DRAWN BY: DJP	DATE: 2-24-12	SHEET: 1 of 1
CHECKED BY: DSP	DWG: F-SALEM WMP	FILE: 5363