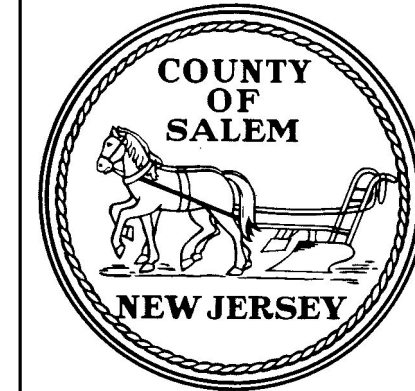


NOTES:

WATERMANS, BOOSTER STATIONS & TANK, TAKEN FROM FILES SUPPLIED BY SALEM CITY AND THE BOROUGH OF WOODSTOWN.
 BASEMAP INFORMATION INCLUDING PARCELS, ROADS AND MUNICIPAL BOUNDARY TAKEN FROM THE SALEM COUNTY DATABASE FILE.
 THIS (MAP/PUBLICATION/REPORT) WAS DEVELOPED USING NEW JERSEY DEPARTMENT OF ENVIRONMENTAL PROTECTION GEOGRAPHIC INFORMATION SYSTEM DIGITAL DATA, BUT THIS SECONDARY PRODUCT HAS NOT BEEN VERIFIED BY NJDEP AND IS NOT STATE-AUTHORIZED.

NO.	DATE	REVISION	BY:
REVISIONS			

WASTEWATER MANAGEMENT PLAN
PLANNING AREA & WATER SUPPLY - MAP 1
TOWNSHIP OF MANNINGTON
 SALEM COUNTY
WASTEWATER MANAGEMENT PLAN
 SALEM COUNTY, NEW JERSEY

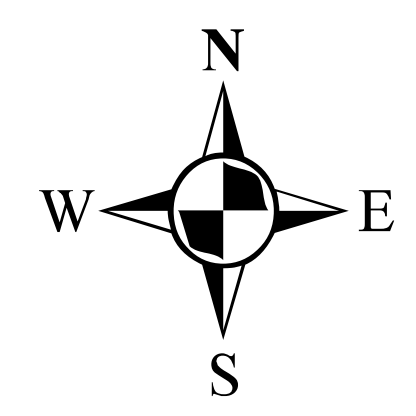
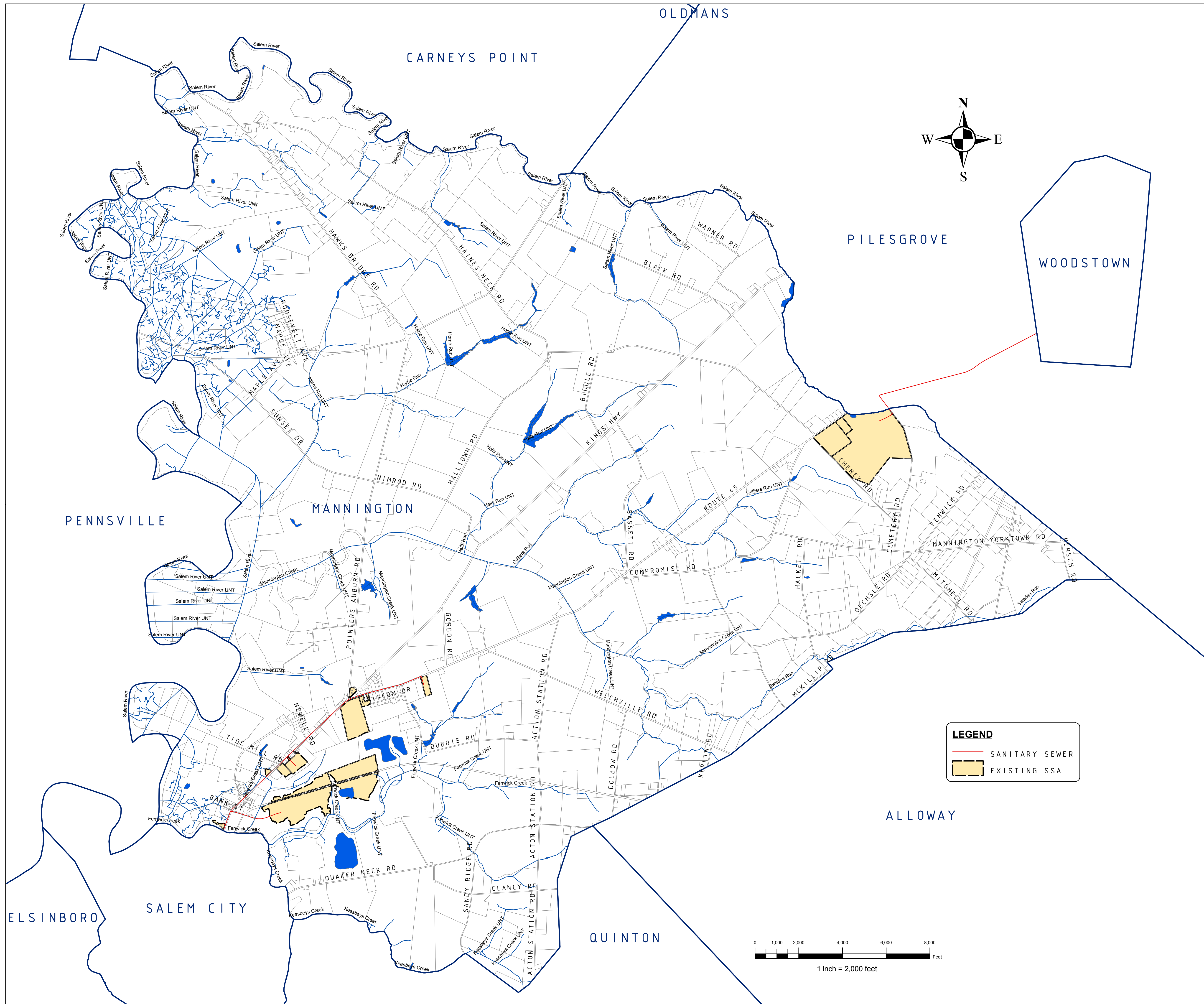


SALEM COUNTY DEPARTMENT OF PLANNING AND AGRICULTURE
 110 FIFTH STREET
 SALEM, NEW JERSEY

SICKELS & ASSOCIATES INC.	SHERWOOD MEWS 833 KINGS HIGHWAY WOODBURY, NEW JERSEY 08096-3110 <small>N.J. CERTIFICATE OF AUTHORIZATION No. GA27994903</small>	
	856-848-6800 FAX 848-8520	
DRAWN BY: DJP CHECKED BY: DSP	DATE: 2-24-12 DWG: F-SALEM WMP	SHEET: 1 of 1 FILE: 5363

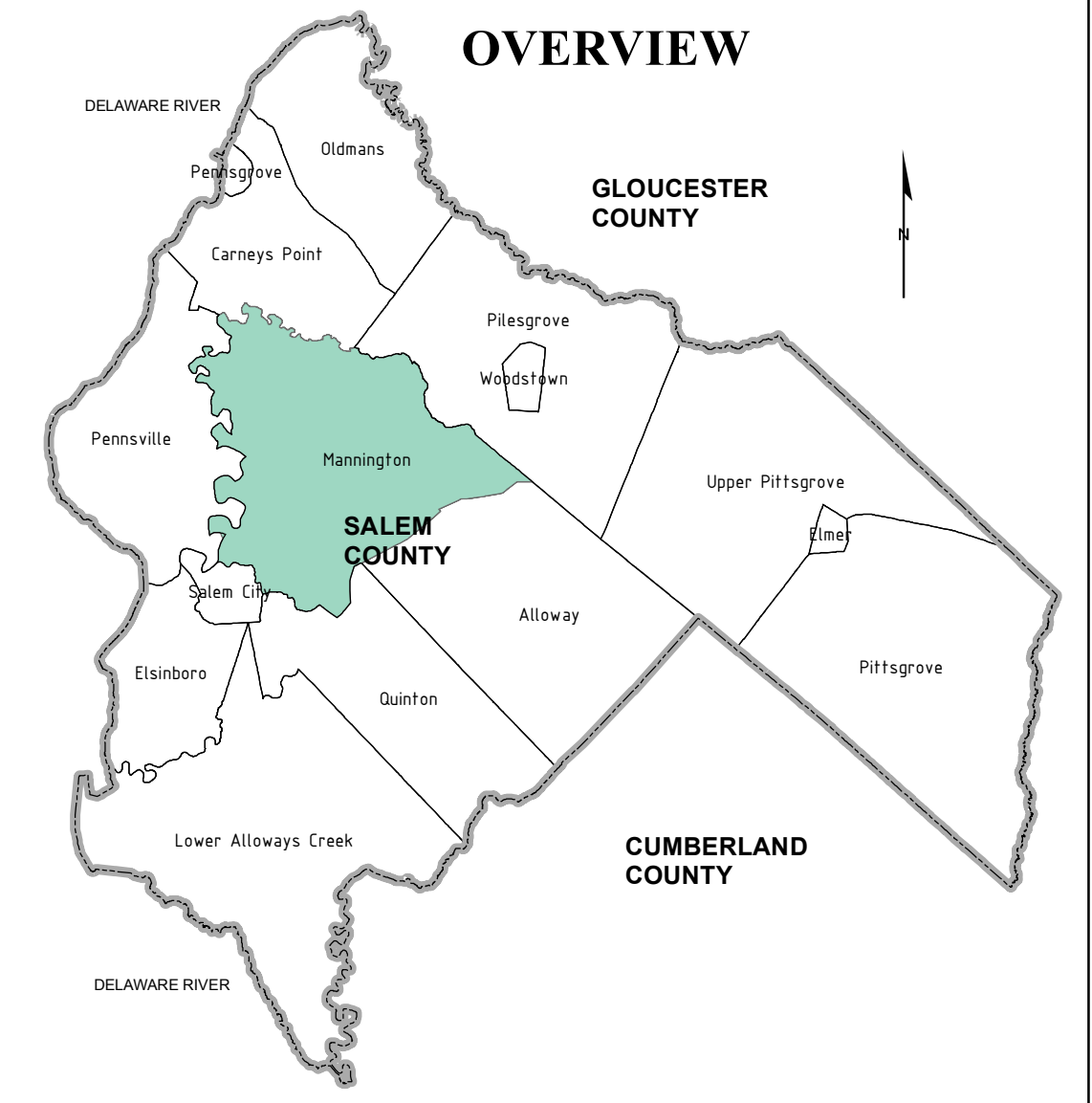
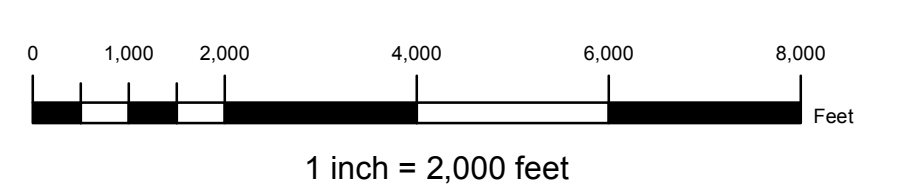
LEGEND

- WATER BOOSTER STATION
- TANK
- STREAMS
- 12" WATER MAIN
- 16" WATERMAIN
- 8" WATERMAIN
- HUC-11
- WOODSTOWN RETAIL AREA
- SALEM WATER RETAIL AREA



LEGEND

- SANITARY SEWER
- EXISTING SSA



NOTES:

"LOCATIONS OF FUTURE PUMP STATIONS, MAJOR INTERCEPTORS, AND TRUNK SEWERS ARE BEING PROVIDED FOR GENERAL INFORMATION ONLY AND WILL NOT SERVE AS THE BASIS FOR ANY FUTURE CONSISTENCY DETERMINATIONS OR PERMIT REVIEWS UNLESS THE PUMP STATION, MAJOR INTERCEPTOR OR TRUNK SEWER IS PART OF A STATE OR FEDERALLY FUNDED PROJECT."

"ALL EXISTING, NEW, OR EXPANDED INDUSTRIAL PRETREATMENT FACILITIES REQUIRING SIGNIFICANT INDIRECT USER (SIU) PERMITS AND/OR TREATMENT WORKS APPROVALS, AND WHICH ARE LOCATED WITHIN THE SPECIFIED SEWER SERVICE AREA, IS DEEMED TO BE CONSISTENT."

SANITARY SEWER INFORMATION, TAKEN FROM FILES SUPPLIED BY SALEM CITY AND THE BOROUGH OF WOODSTOWN.

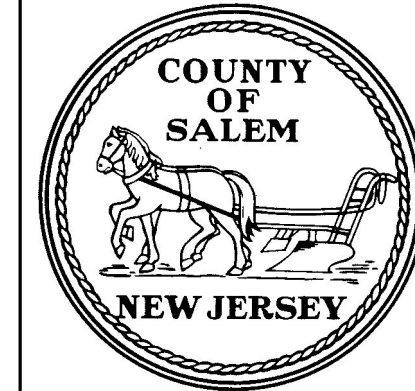
BASEMAP INFORMATION INCLUDING PARCELS, ROADS AND MUNICIPAL BOUNDARY TAKEN FROM THE SALEM COUNTY DATABASE FILE.

"THIS (MAP/PUBLICATION/REPORT) WAS DEVELOPED USING NEW JERSEY DEPARTMENT OF ENVIRONMENTAL PROTECTION GEOGRAPHIC INFORMATION SYSTEM DIGITAL DATA, BUT THIS SECONDARY PRODUCT HAS NOT BEEN VERIFIED BY NJDEP AND IS NOT STATE-AUTHORIZED."

NO.	DATE	REVISION	BY:
1.	12-18-13	REV NJPDES-T1 AREAS & TABLE PER NJDEP COMMENTS	DJP

EXISTING FACILITIES AND SERVICE AREA - MAP 2

TOWNSHIP OF MANNINGTON
SALEM COUNTY
WASTEWATER MANAGEMENT PLAN
SALEM COUNTY, NEW JERSEY



SALEM COUNTY DEPARTMENT OF PLANNING AND AGRICULTURE
110 FIFTH STREET
SALEM, NEW JERSEY

SICKELS & ASSOCIATES INC.

SHERWOOD MEWS
833 KINGS HIGHWAY
WOODBURY, NEW JERSEY 08096-3110
NJ CERTIFICATE OF AUTHORIZATION
No. GA27949601 856-848-6800
FAX 848-8520

DRAWN BY: DJP	DATE: 2-24-12	SHEET: 1 of 1
CHECKED BY: DSP	DWG: F-SALEM WMP	FILE: 5363

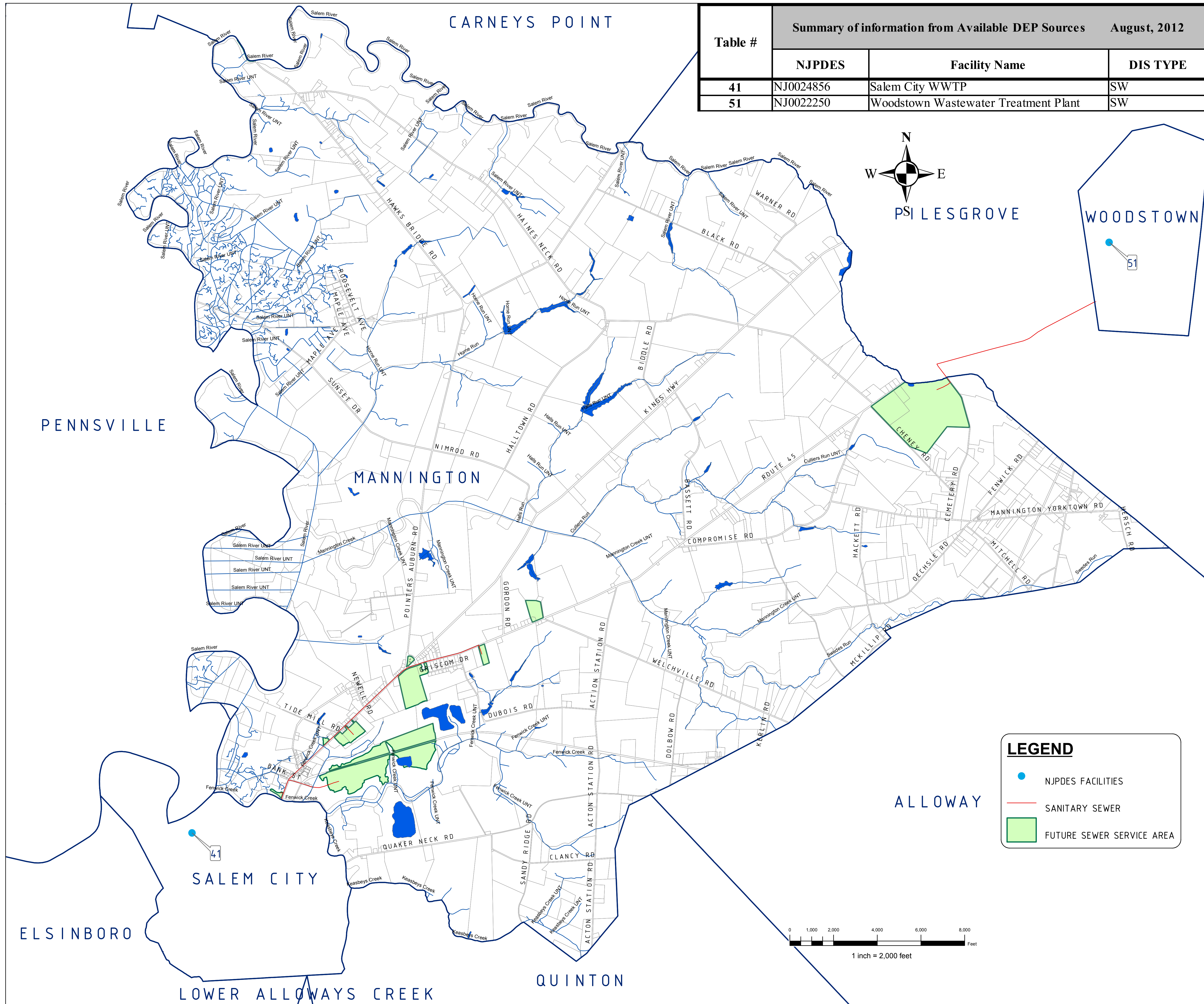
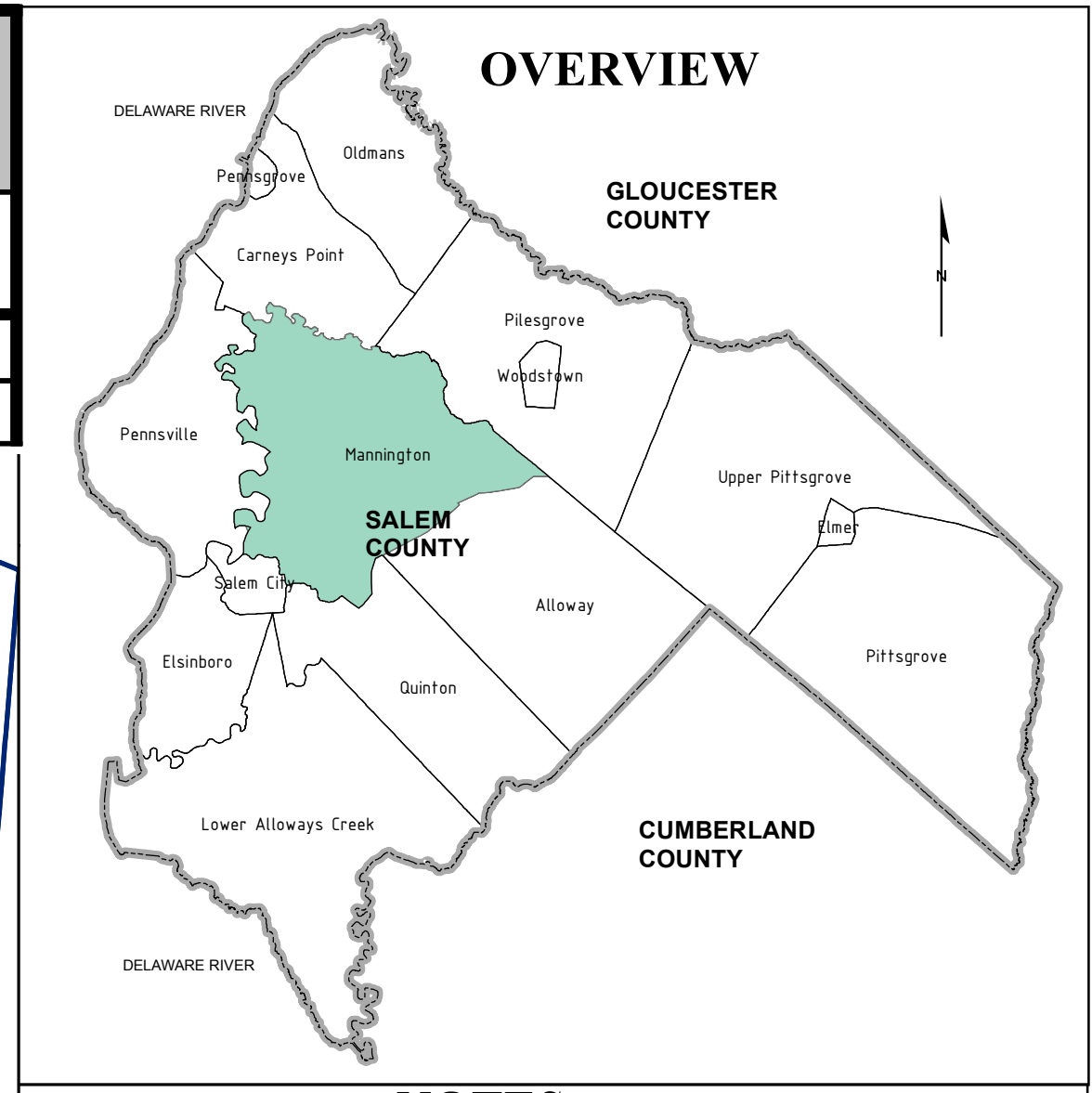


Table #	Summary of information from Available DEP Sources August, 2012	
	NJPDES	Facility Name
41	NJ0024856	Salem City WWTP
51	NJ0022250	Woodstown Wastewater Treatment Plant



NOTES:

"PLEASE NOTE THAT WHERE THE VISUAL DEPICTION OF SSA DOES NOT EXPLICITLY INDICATE THE SPECIFIC SEWER SERVICE AREA ASSOCIATED WITH THE WASTEWATER TREATMENT FACILITIES, THE STATEWIDE DIGITIZED SEWER SERVICE AREA MAPPING DOES. THE PUBLICLY AVAILABLE SEWER SERVICE AREA MAPPING IS AVAILABLE FOR VIEWING ON NJ GEO-WEB AT [HTTP://WWW.NJ.GOV/DEP/GIS/GEOWEB/PLASH.HTM](http://www.nj.gov/dep/gis/geoweb/plash.htm). IT IS ALSO AVAILABLE FOR DOWNLOAD TO USE IN ARGIS AT [HTTP://WWW.NJ.GOV/DEP/GIS/STATESHP.HTML](http://www.nj.gov/dep/gis/stateshp.html)."

"THE SEWER SERVICE AREA IDENTIFIED ON THIS MAP HAS BEEN REVIEWED BY THE MUNICIPALITY, COUNTY AND DEP. THIS AREA HAS BEEN DEFINED BASED ON ENVIRONMENTAL CONSTRAINTS, LANDSCAPE PROJECT AREA GIS LAYERS, AVAILABLE FROM THE DEPARTMENT TO CLARIFY AREAS OF POTENTIAL SEWER SERVICE. THE TREATMENT FACILITY FOR THE SEWER SERVICE AREA DOES NOT GUARANTEE THAT SUFFICIENT WASTEWATER TREATMENT CAPACITY WILL BE AVAILABLE FOR THE COMPLETE BUILD OUT OF THE AREA."

"LOCATIONS OF FUTURE PUMP STATIONS, MAJOR INTERCEPTORS, AND TRUNK SEWERS ARE BEING PROVIDED FOR GENERAL INFORMATION ONLY AND WILL NOT SERVE AS THE BASIS FOR ANY FUTURE CONSISTENCY DETERMINATIONS OR PERMIT REVIEWS UNLESS THE PUMP STATION, MAJOR INTERCEPTOR OR TRUNK SEWER IS PART OF A STATE OR FEDERALLY FUNDED PROJECT."

"ALL EXISTING, NEW, OR EXPANDED INDUSTRIAL PRETREATMENT FACILITIES REQUIRING SIGNIFICANT INDIRECT USER (SUI) PERMITS AND/OR TREATMENT WORKS APPROVALS, AND WHICH ARE LOCATED WITHIN THE SPECIFIED SEWER SERVICE AREA, IS DEEMED TO BE CONSISTENT."

"PRE-EXISTING GRANT CONDITIONS AND REQUIREMENTS (FROM FEDERAL AND STATE GRANTS OR LOANS FOR SEWERAGE FACILITIES) WHICH PROVIDE FOR RESTRICTION OF SEWER SERVICE TO ENVIRONMENTALLY SENSITIVE AREAS, ARE UNAFFECTED BY ADOPTION OF THIS WMP AND COMPLIANCE IS REQUIRED. PLEASE SEE MUNICIPAL WMP CHAPTERS FOR THE EXISTENCE OF ANY APPLICABLE ENVIRONMENTALLY SENSITIVE AREAS IN WHICH FEDERAL 201 GRANT LIMITATIONS PROHIBIT THE EXTENSION OF SEWER SERVICE."

"INDIVIDUAL SUBSURFACE SEWAGE DISPOSAL SYSTEMS (ISSDS) FOR INDIVIDUAL RESIDENCES CAN ONLY BE CONSTRUCTED IN DEPICTED SEWER SERVICE AREAS IF LEGALLY ENFORCEABLE GUARANTEES ARE PROVIDED, BEFORE SUCH CONSTRUCTION, THAT USE OF SUCH SYSTEMS WILL BE DISCONTINUED WHEN THE DEPICTED SEWER SERVICE BECOMES AVAILABLE. THIS APPLIES TO ISSDS THAT REQUIRE CERTIFICATION FROM THE DEPARTMENT UNDER THE REALTY IMPROVEMENT SEWERAGE AND FACILITIES ACT (N.J.S.A. 58:11-23) OR INDIVIDUAL TREATMENT WORKS APPROVAL OR NEW JERSEY POLLUTANT DISCHARGE ELIMINATION SYSTEM PERMITS (UNDER N.J.A.C. 7:14A). IT ALSO APPLIES TO ISSDS WHICH REQUIRE ONLY LOCAL APPROVALS."

"COMPLIANCE WITH THE CONNECTION REQUIREMENT HAS BEEN DEMONSTRATED THROUGH ADOPTION OF TOWNSHIP OF MANNINGTON ORDINANCE # INSERT ORDINANCE # IN ADDITION TO THE TEXT FOUND IN THE WMP TEMPLATE DOCUMENT THE FOLLOWING IS NEEDED: "PROPOSED DEVELOPMENTS TYING INTO EXISTING AND PROPOSED SEWER SERVICE AREAS WHICH REQUIRE COASTAL PERMITS MUST DEMONSTRATE COMPLIANCE WITH ALL APPLICABLE SECTIONS OF THE COASTAL ZONE MANAGEMENT RULES INCLUDING, BUT NOT LIMITED TO, WETLANDS (N.J.A.C. 7:7E-3.27), WETLANDS BUFFERS (N.J.A.C. 7:7E-3.38), SECONDARY IMPACTS (N.J.A.C. 7:7E-6.3), PUBLIC FACILITY USE POLICIES (N.J.A.C. 7:7E-7.6), WATER QUALITY (N.J.A.C. 7:7E-8.4), GROUND WATER USE (N.J.A.C. 7:7E-8.6) AND THE POLICIES UNDER GENERAL LAND AREAS RULES, SUBCHAPTERS 5, 5A AND 5B"

"SANITARY SEWER INFORMATION, TAKEN FROM FILES SUPPLIED BY SALEM CITY AND THE BOROUGH OF WOODSTOWN. BASEMAP INFORMATION INCLUDING PARCELS, ROADS AND MUNICIPAL BOUNDARY TAKEN FROM THE SALEM COUNTY DATABASE FILE. THIS (MAP/PUBLICATION/REPORT) WAS DEVELOPED USING NEW JERSEY DEPARTMENT OF ENVIRONMENTAL PROTECTION GEOGRAPHIC INFORMATION SYSTEM DIGITAL DATA, BUT THIS SECONDARY PRODUCT HAS NOT BEEN VERIFIED BY NJDEP AND IS NOT STATE-AUTHORIZED."

NO.	DATE	REVISION	BY:
3.	9-2-15	ADDED NOTE PER NJDEP COMMENTS	DJP
2.	7-14-14	REV PER NJDEP COMMENTS	DJP
1.	12-18-13	REV NJPDES-T1 AREAS & TABLE PER NJDEP COMMENTS	DJP

LEGEND

- NJPDES FACILITIES
- SANITARY SEWER
- FUTURE SEWER SERVICE AREA

REVISIONS

FUTURE SEWER SERVICE AREA - MAP 3

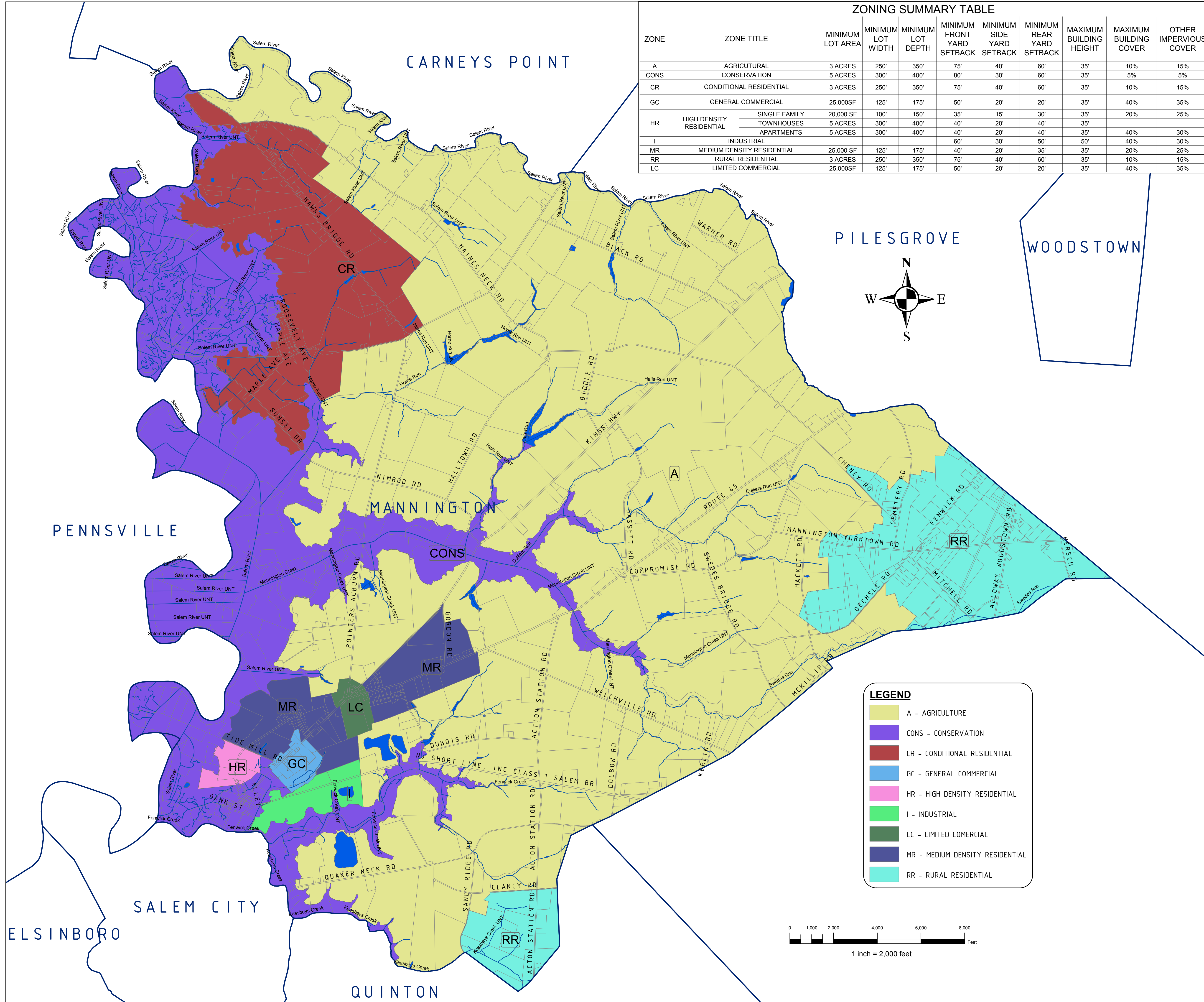
TOWNSHIP OF MANNINGTON
SALEM COUNTY
WASTEWATER MANAGEMENT PLAN
SALEM COUNTY, NEW JERSEY



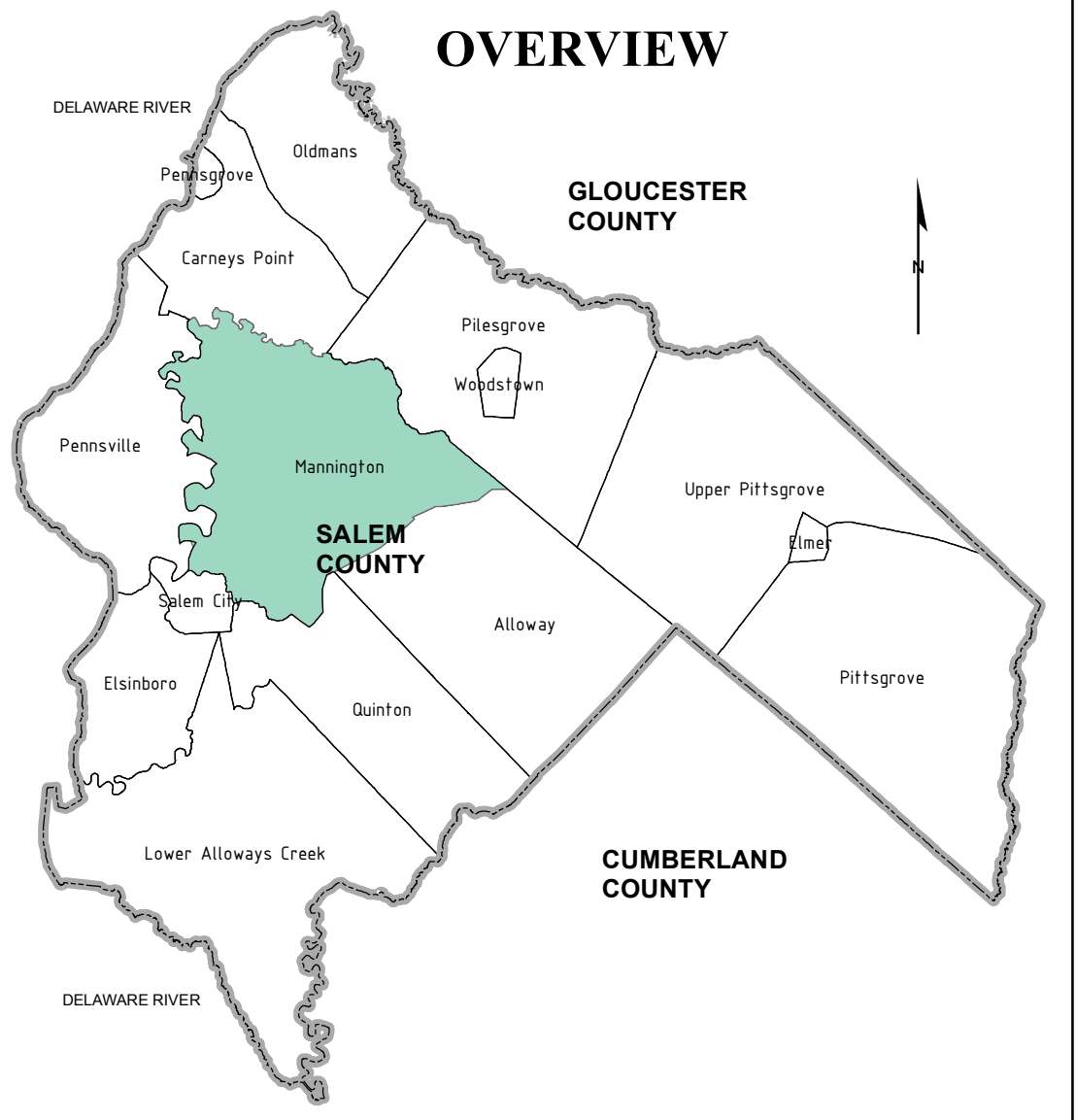
SICKELS & ASSOCIATES, INC.

SHERWOOD MEWS
833 KINGS HIGHWAY
WOODBURY, NEW JERSEY 08096-3110
NJ CERTIFICATE OF AUTHORIZATION
No. GA27994960
856-848-6800
FAX 848-8520

DRAWN BY: DJP	DATE: 2-24-12	SHEET: 1 of 1
CHECKED BY: DSP	DWG: F-SALEM WMP	FILE: 5363

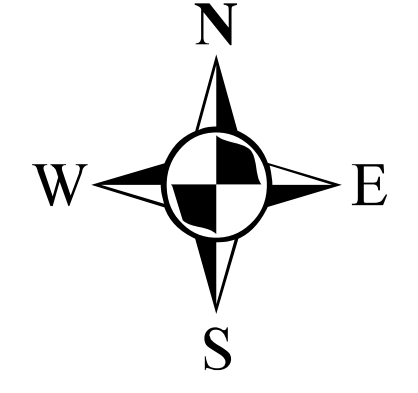


ZONE	ZONE TITLE	MINIMUM LOT AREA	MINIMUM LOT WIDTH	MINIMUM LOT DEPTH	MINIMUM FRONT YARD SETBACK	MINIMUM SIDE YARD SETBACK	MINIMUM REAR YARD SETBACK	MAXIMUM BUILDING HEIGHT	MAXIMUM BUILDING COVER	OTHER IMPERVIOUS COVER
A	AGRICULTURAL	3 ACRES	250'	350'	75'	40'	60'	35'	10%	15%
CONS	CONSERVATION	5 ACRES	300'	400'	80'	30'	60'	35'	5%	5%
CR	CONDITIONAL RESIDENTIAL	3 ACRES	250'	350'	75'	40'	60'	35'	10%	15%
GC	GENERAL COMMERCIAL	25,000SF	125'	175'	50'	20'	20'	35'	40%	35%
HR	SINGLE FAMILY	20,000 SF	100'	150'	35'	15'	30'	35'	20%	25%
	TOWNHOUSES	5 ACRES	300'	400'	40'	20'	40'	35'		
I	APARTMENTS	5 ACRES	300'	400'	40'	20'	40'	35'	40%	30%
	INDUSTRIAL				60'	30'	50'	50'	40%	30%
MR	MEDIUM DENSITY RESIDENTIAL	25,000 SF	125'	175'	40'	20'	35'	35'	20%	25%
RR	RURAL RESIDENTIAL	3 ACRES	250'	350'	75'	40'	60'	35'	10%	15%
LC	LIMITED COMMERCIAL	25,000SF	125'	175'	50'	20'	20'	35'	40%	35%



PILESGROVE

WOODSTOWN



NOTES:

ZONING MAP TAKEN FROM SALEM COUNTY DATABASE FILE DATED 12-8-10. ZONING MAP DATED 7-2010. ORDINANCE INFORMATION TAKEN FROM THE MANNINGTON ORDINANCE DATED 11-07.

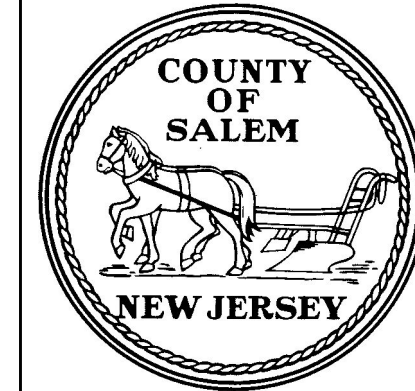
BASEMAP INFORMATION INCLUDING PARCELS, ROADS AND MUNICIPAL BOUNDARY TAKEN FROM THE SALEM COUNTY DATABASE FILE.

"THIS (MAP/PUBLICATION/REPORT) WAS DEVELOPED USING NEW JERSEY DEPARTMENT OF ENVIRONMENTAL PROTECTION GEOGRAPHIC INFORMATION SYSTEM DIGITAL DATA, BUT THIS SECONDARY PRODUCT HAS NOT BEEN VERIFIED BY NJDEP AND IS NOT STATE-AUTHORIZED."

NO.	DATE	REVISION	BY:
		REVISIONS	

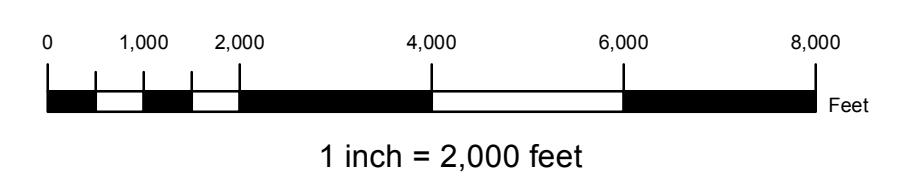
ZONING - MAP 4

TOWNSHIP OF MANNINGTON
SALEM COUNTY
WASTEWATER MANAGEMENT PLAN
SALEM COUNTY, NEW JERSEY

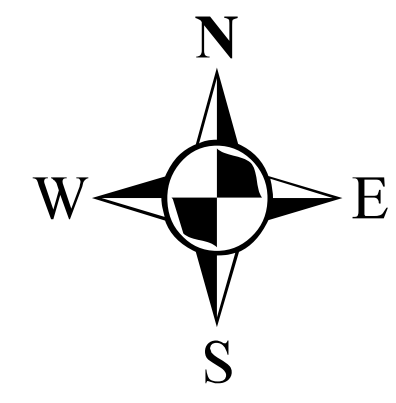
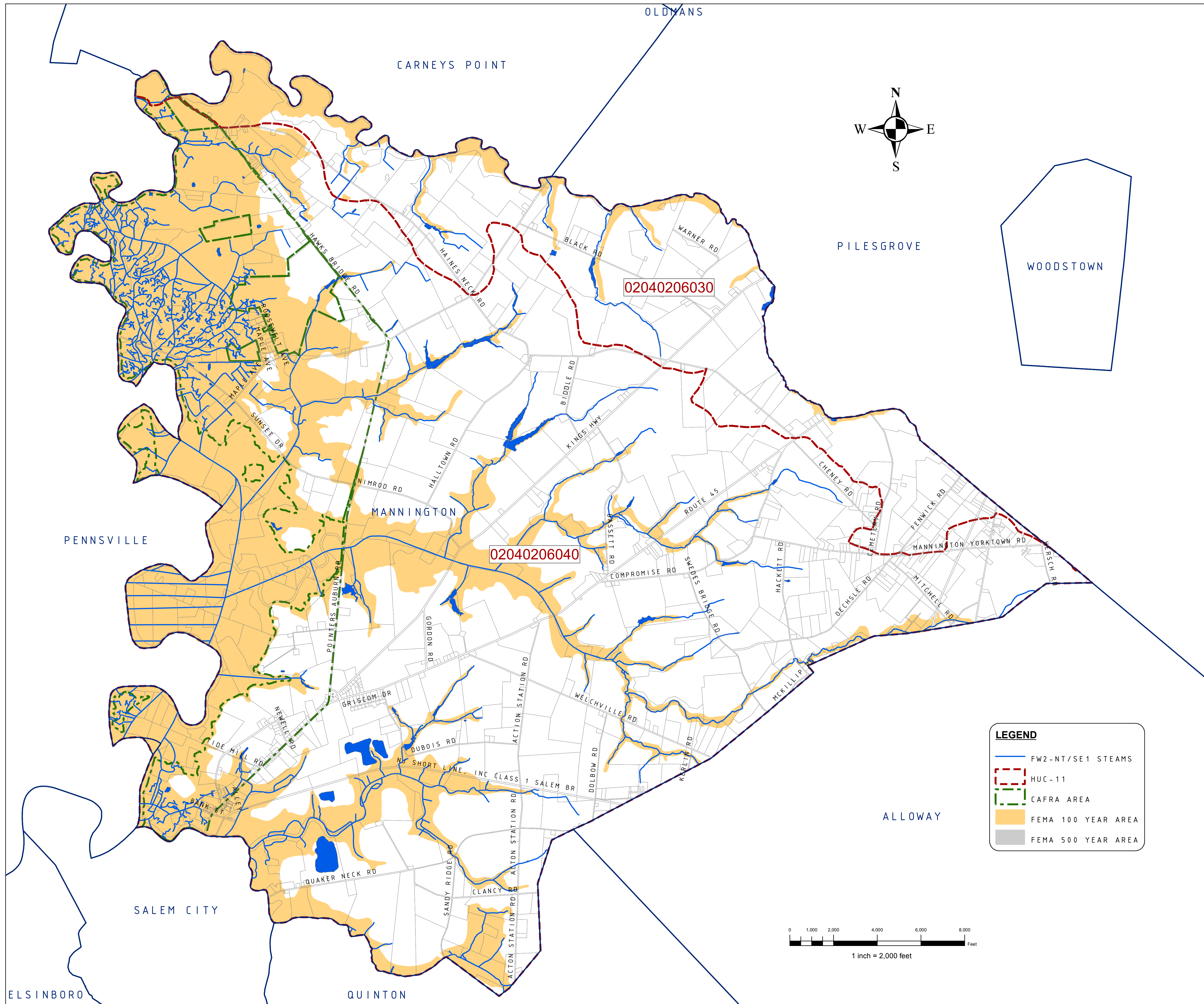


SALEM COUNTY DEPARTMENT OF PLANNING AND AGRICULTURE
110 FIFTH STREET
SALEM, NEW JERSEY

[Light Green Box]	A - AGRICULTURE
[Purple Box]	CONS - CONSERVATION
[Red Box]	CR - CONDITIONAL RESIDENTIAL
[Light Blue Box]	GC - GENERAL COMMERCIAL
[Pink Box]	HR - HIGH DENSITY RESIDENTIAL
[Light Green Box]	I - INDUSTRIAL
[Dark Green Box]	LC - LIMITED COMERCIAL
[Dark Blue Box]	MR - MEDIUM DENSITY RESIDENTIAL
[Cyan Box]	RR - RURAL RESIDENTIAL

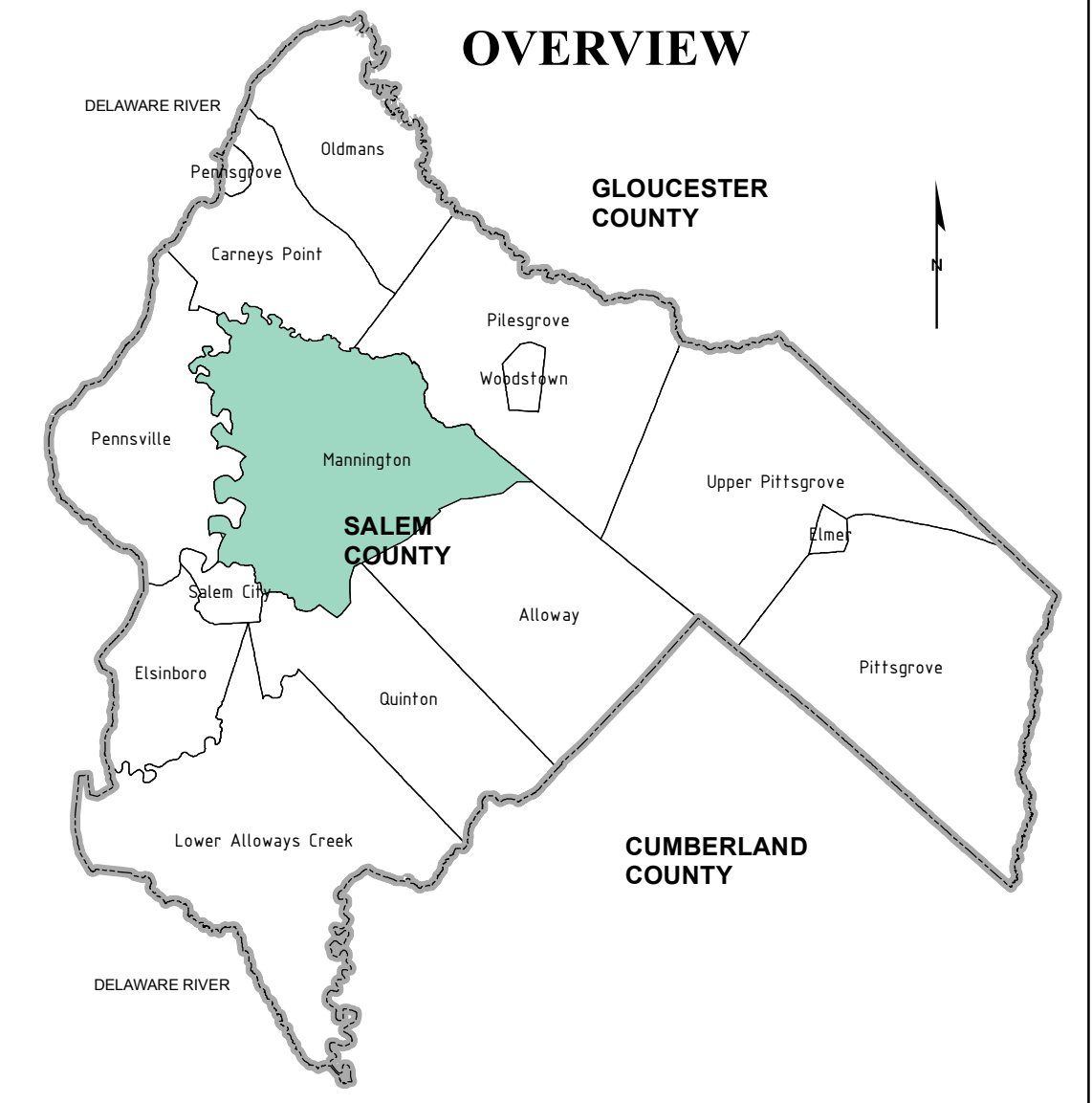
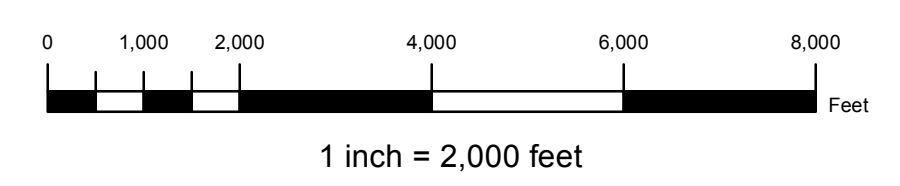


	SHERWOOD MEWS 833 KINGS HIGHWAY WOODBURY, NEW JERSEY 08096-3110 NJ CERTIFICATE OF AUTHORIZATION No. GA27949601
	856-848-6800 FAX 848-8520
DRAWN BY: DJP CHECKED BY: DSP	DATE: 2-24-12 DWG: F-SALEM WMP
SHEET: 1 of 1 FILE: 5363	



LEGEND

- FW2-NT/SE1 STEAMS
- HUC-11
- CAFRA AREA
- FEMA 100 YEAR AREA
- FEMA 500 YEAR AREA



NOTES:

"DEVELOPMENT IN AREAS MAPPED AS WETLANDS, FLOOD PRONE AREAS, SUITABLE HABITAT FOR ENDANGERED AND THREATENED SPECIES AS IDENTIFIED ON THE DEPARTMENT'S LANDSCAPE MAPS OF HABITAT FOR ENDANGERED, THREATENED AND OTHER PRIORITY WILDLIFE AS RANK 3.4 AND 5, NATURAL HERITAGE PRIORITY SITES, RIPARIAN ZONES, STEEP SLOPES, OR DESIGNATED RIVER AREAS MAY BE SUBJECT TO SPECIAL REGULATION UNDER FEDERAL OR STATE STATUTES OR RULES, AND THAT INTERESTED PERSONS SHOULD CHECK WITH THE DEPARTMENT FOR THE LATEST INFORMATION. DEPICTION OF ENVIRONMENTAL FEATURES SHALL BE FOR GENERAL INFORMATION PURPOSES ONLY, AND SHALL NOT BE CONSTRUED TO DEFINE THE LEGAL GEOGRAPHIC JURISDICTION OF SUCH STATUTES OR RULES"

BASEMAP INFORMATION INCLUDING PARCELS, ROADS AND MUNICIPAL BOUNDARY TAKEN FROM THE SALEM COUNTY DATABASE FILE.

"THIS (MAP/PUBLICATION/REPORT) WAS DEVELOPED USING NEW JERSEY DEPARTMENT OF ENVIRONMENTAL PROTECTION GEOGRAPHIC INFORMATION SYSTEM DIGITAL DATA, BUT THIS SECONDARY PRODUCT HAS NOT BEEN VERIFIED BY NJDEP AND IS NOT STATE-AUTHORIZED."

NO.	DATE	REVISION	BY:
REVISIONS			

ENVIRONMENTAL FEATURES - MAP 5A CATEGORY ONE STREAMS, CAFRA, HUC 11, FEMA AREAS

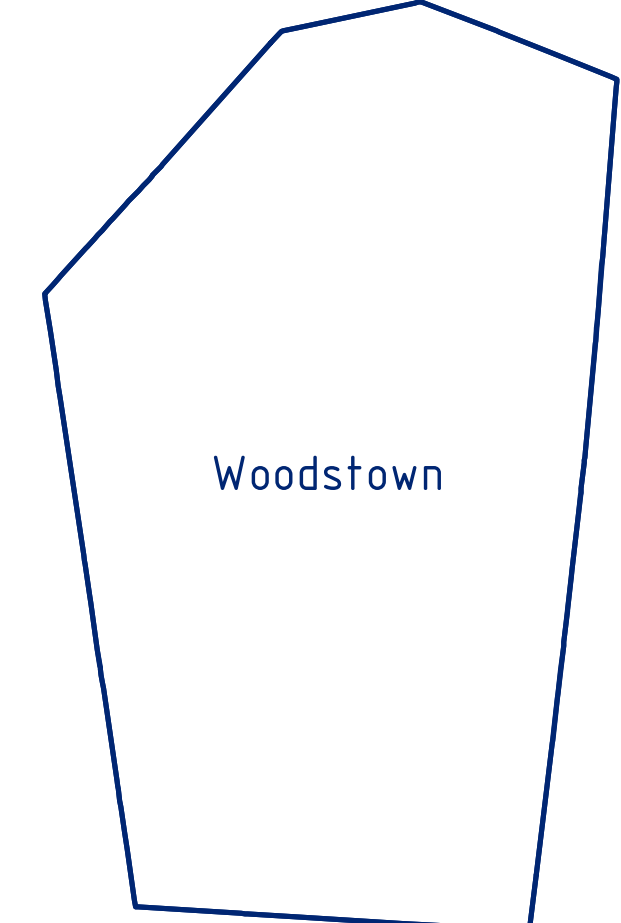
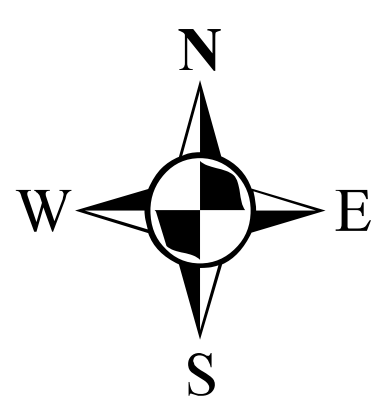
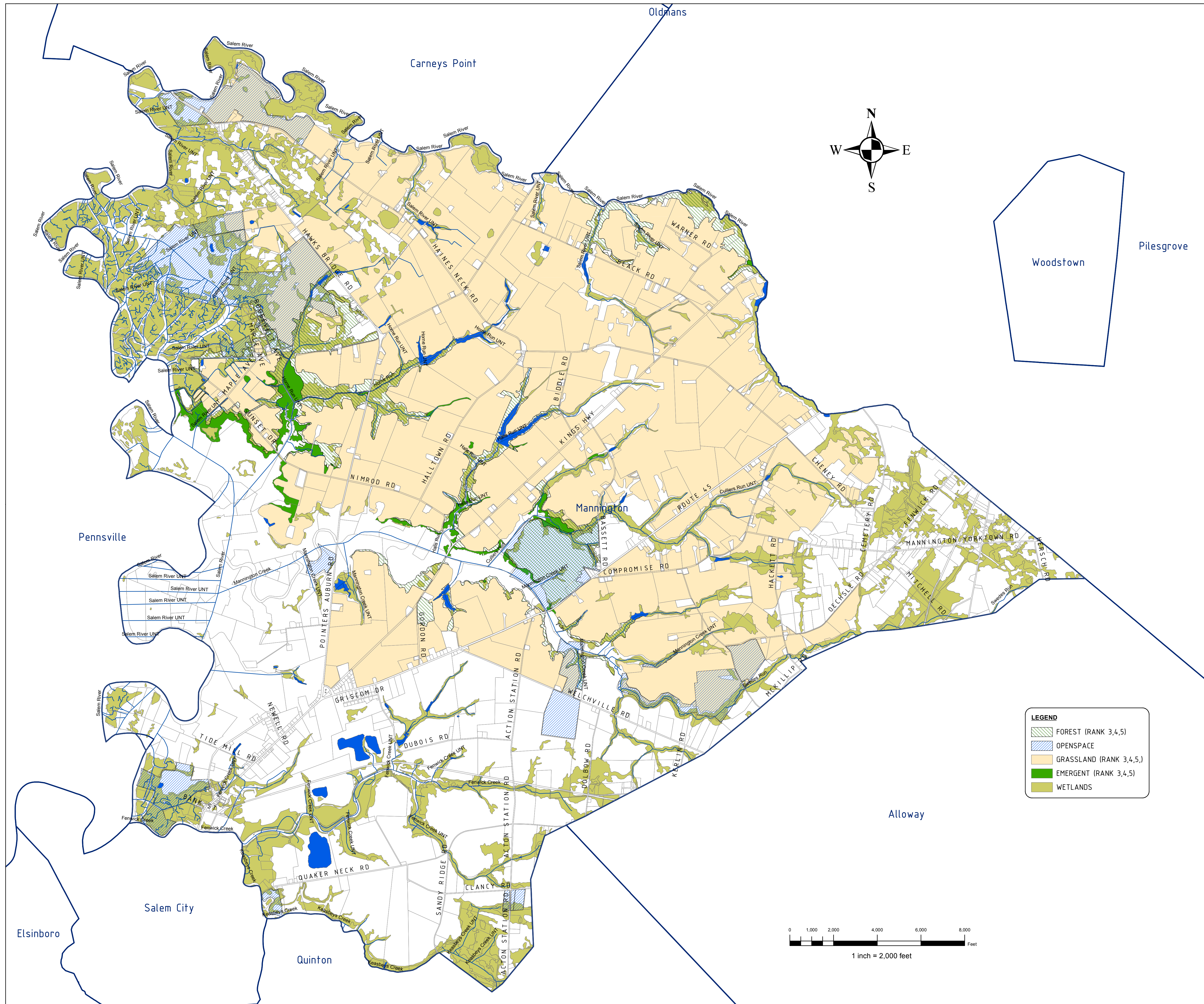
TOWNSHIP OF MANNINGTON
SALEM COUNTY
WASTEWATER MANAGEMENT PLAN
SALEM COUNTY, NEW JERSEY

SALEM COUNTY DEPARTMENT OF PLANNING AND AGRICULTURE
110 FIFTH STREET
SALEM, NEW JERSEY

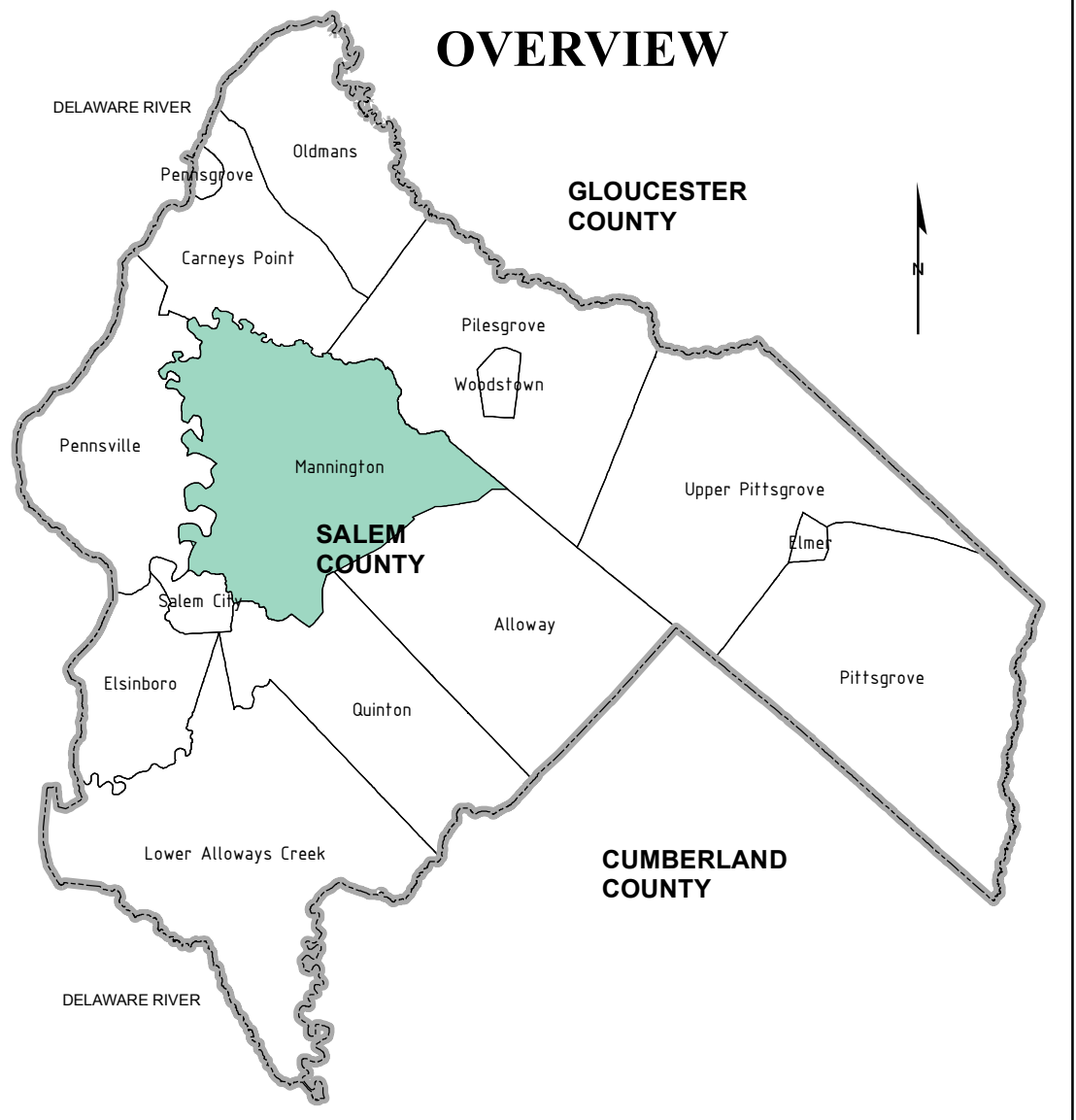
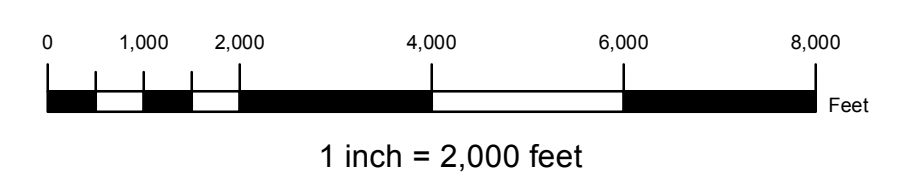
SICKELS & ASSOCIATES INC.

SHERWOOD MEWS
833 KINGS HIGHWAY
WOODBURY, NEW JERSEY 08096-3110
NJ CERTIFICATE OF AUTHORIZATION
No. GA27994969
856-848-6800
FAX 848-8520

DRAWN BY: DJP	DATE: 2-24-12	SHEET: 1 of 1
CHECKED BY: DSP	DWG: F-SALEM WMP	FILE: 5363



LEGEND	
	FOREST (RANK 3,4,5)
	OPENSOURCE
	GRASSLAND (RANK 3,4,5)
	EMERGENT (RANK 3,4,5)
	WETLANDS



NOTES:

"DEVELOPMENT IN AREAS MAPPED AS WETLANDS, FLOOD PRONE AREAS, SUITABLE HABITAT FOR ENDANGERED AND THREATENED SPECIES AS IDENTIFIED ON THE DEPARTMENT'S LANDSCAPE MAPS OF HABITAT FOR ENDANGERED, THREATENED AND OTHER PRIORITY WILDLIFE AS RANK 3,4 AND 5, NATURAL HERITAGE PRIORITY SITES, RIPARIAN ZONES, STEEP SLOPES, OR DESIGNATED RIVER AREAS MAY BE SUBJECT TO SPECIAL REGULATION UNDER FEDERAL OR STATE STATUTES OR RULES, AND THAT INTERESTED PERSONS SHOULD CHECK WITH THE DEPARTMENT FOR THE LATEST INFORMATION. DEPICTION OF ENVIRONMENTAL FEATURES SHALL BE FOR GENERAL INFORMATION PURPOSES ONLY, AND SHALL NOT BE CONSTRUED TO DEFINE THE LEGAL GEOGRAPHIC JURISDICTION OF SUCH STATUTES OR RULES"

BASEMAP INFORMATION INCLUDING PARCELS, ROADS AND MUNICIPAL BOUNDARY TAKEN FROM THE SALEM COUNTY DATABASE FILE.

"THIS (MAP/PUBLICATION/REPORT) WAS DEVELOPED USING NEW JERSEY DEPARTMENT OF ENVIRONMENTAL PROTECTION GEOGRAPHIC INFORMATION SYSTEM DIGITAL DATA, BUT THIS SECONDARY PRODUCT HAS NOT BEEN VERIFIED BY NJDEP AND IS NOT STATE-AUTHORIZED."

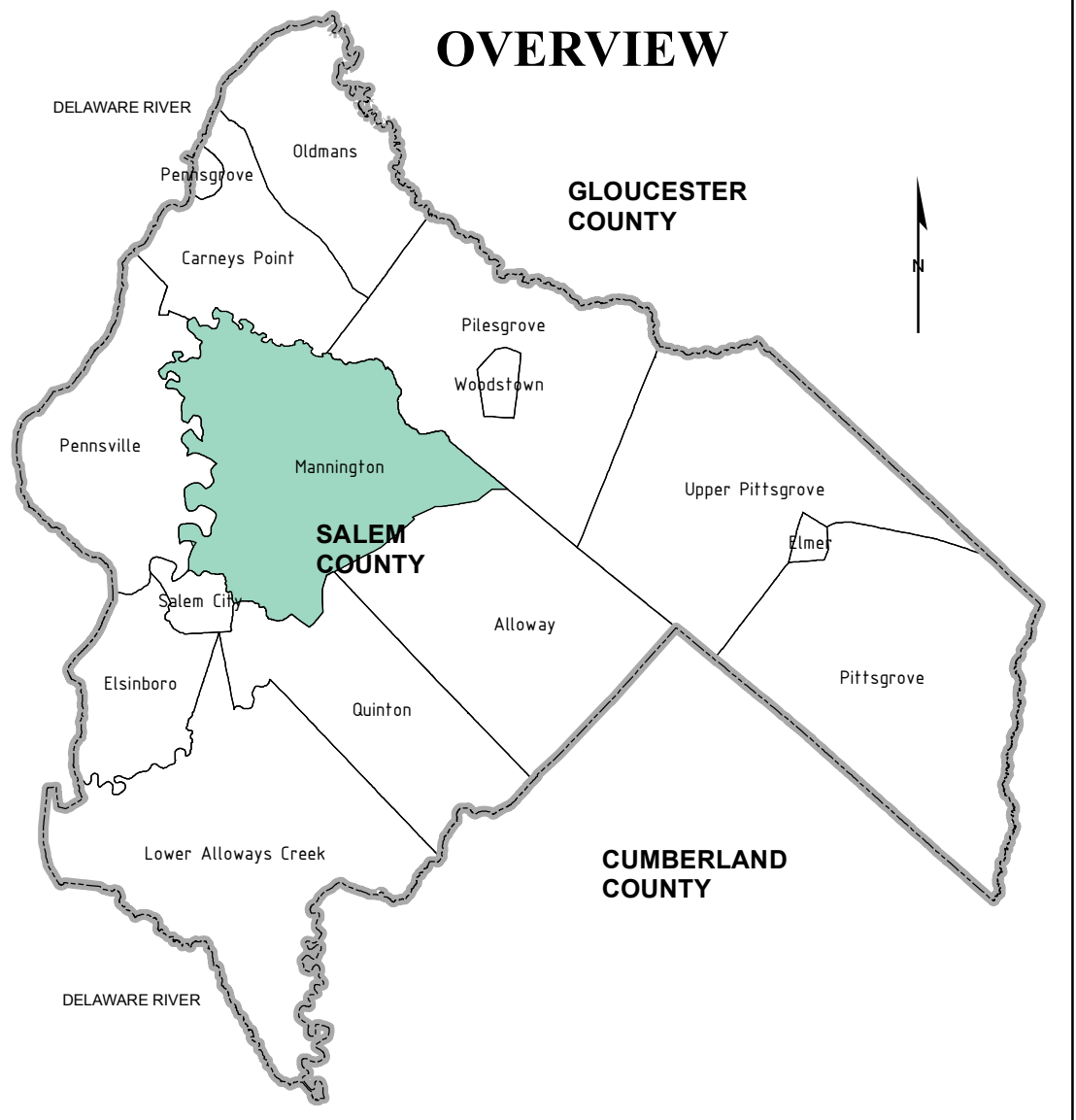
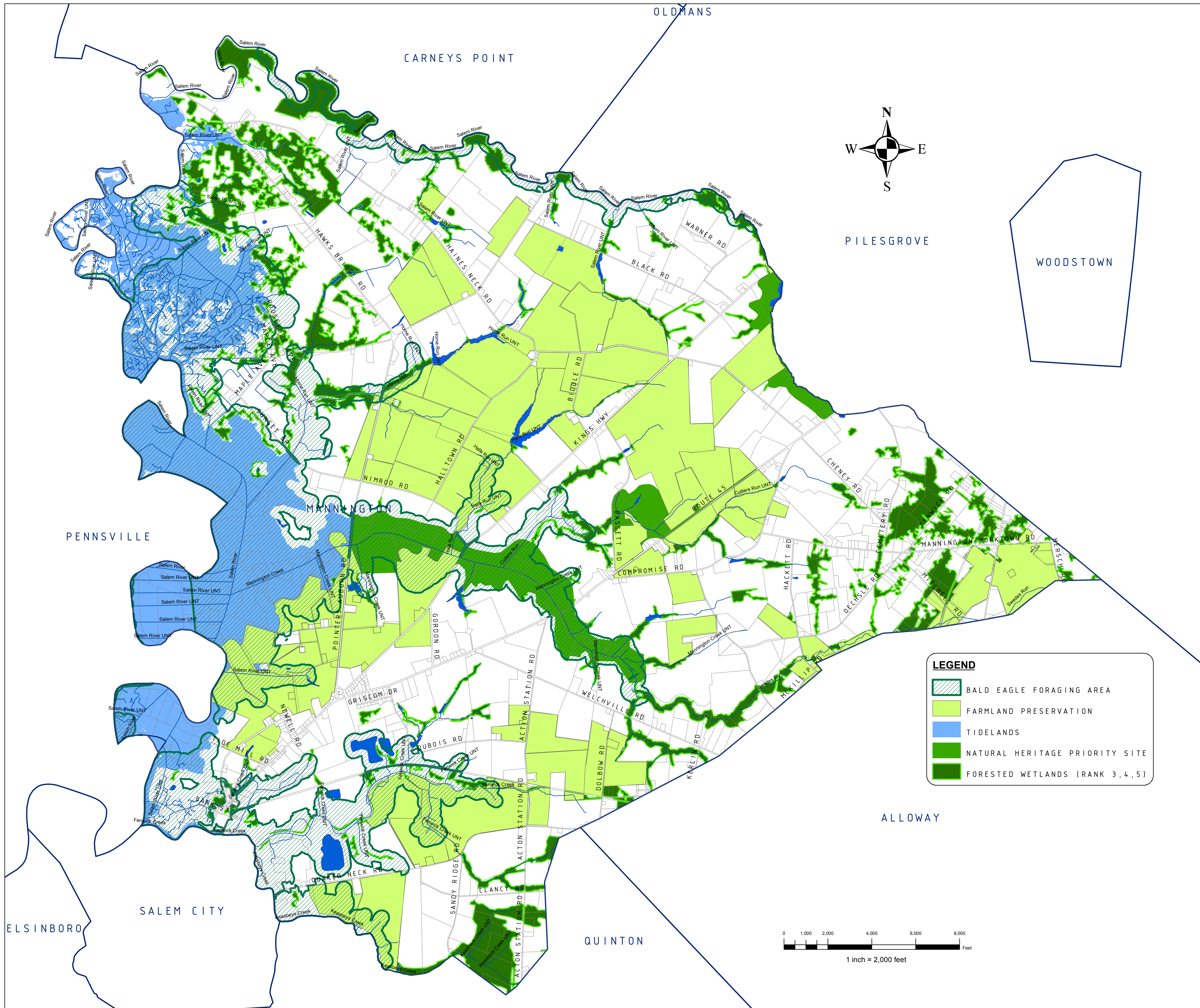
NO.	DATE	REVISION	BY:

ENVIRONMENTAL FEATURES - MAP 5B
WETLANDS, FOREST, GRASSLANDS, EMERGENT,
OPEN SPACE AREAS
TOWNSHIP OF MANNINGTON
 SALEM COUNTY
WASTEWATER MANAGEMENT PLAN
 SALEM COUNTY, NEW JERSEY

SALEM COUNTY DEPARTMENT OF PLANNING AND AGRICULTURE
 110 FIFTH STREET
 SALEM, NEW JERSEY

SICKELS & ASSOCIATES, INC.
 SHERWOOD MEWS
 833 KINGS HIGHWAY
 WOODBURY, NEW JERSEY 08096-3110
 NJ CERTIFICATE OF AUTHORIZATION
 No. GA27994900 856-848-6800
 FAX 848-8520

DRAWN BY: DJP	DATE: 2-24-12	SHEET: 1 of 1
CHECKED BY: DSP	DWG: F-SALEM WMP	FILE: 5363



NOTES:

"DEVELOPMENT IN AREAS MAPPED AS WETLANDS, FLOOD PRONE AREAS, SUITABLE HABITAT FOR ENDANGERED AND THREATENED SPECIES AS IDENTIFIED ON THE DEPARTMENT'S LANDSCAPE MAPS OF HABITAT FOR ENDANGERED, THREATENED AND OTHER PRIORITY WILDLIFE AS RANK 3, 4, AND 5, NATURAL HERITAGE PRIORITY SITES, RIPARIAN ZONES, STEEP SLOPES, OR DESIGNATED RIVER AREAS MAY BE SUBJECT TO SPECIAL REGULATION UNDER FEDERAL OR STATE STATUTES OR RULES, AND THAT INTERESTED PERSONS SHOULD CHECK WITH THE DEPARTMENT FOR THE LATEST INFORMATION. DEPICTION OF ENVIRONMENTAL FEATURES SHALL BE FOR GENERAL INFORMATION PURPOSES ONLY, AND SHALL NOT BE CONSTRUED TO DEFINE THE LEGAL GEOGRAPHIC JURISDICTION OF SUCH STATUTES OR RULES"

BASEMAP INFORMATION INCLUDING PARCELS, ROADS AND MUNICIPAL BOUNDARY TAKEN FROM THE SALEM COUNTY DATABASE FILE.

"THIS (MAP/PUBLICATION/REPORT) WAS DEVELOPED USING NEW JERSEY DEPARTMENT OF ENVIRONMENTAL PROTECTION GEOGRAPHIC INFORMATION SYSTEM DIGITAL DATA, BUT THIS SECONDARY PRODUCT HAS NOT BEEN VERIFIED BY NJDEP AND IS NOT STATE-AUTHORIZED."

NO.	DATE	REVISION	BY:

ENVIRONMENTAL FEATURES - MAP 5C FORESTED WETLANDS, TIDELANDS, BALD EAGLE FORAGING, FARMLAND PRESERVATION, NON-DEGRADATION WATER AREAS

TOWNSHIP OF MANNINGTON
SALEM COUNTY
WASTEWATER MANAGEMENT PLAN
SALEM COUNTY, NEW JERSEY



SICKELS & ASSOCIATES INC.

SHERWOOD MEWS
833 KINGS HIGHWAY
WOODBURY, NEW JERSEY 08096-3110
NJ CERTIFICATE OF AUTHORIZATION
No. GA27949600 856-848-6800
FAX 848-8520

DRAWN BY: DJP	DATE: 2-24-12	SHEET: 1 of 1
CHECKED BY: DSP	DWG: F-SALEM WMP	FILE: 5363