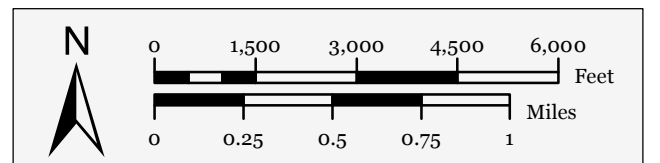
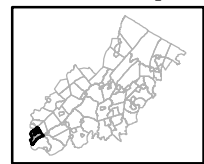


**FIGURE POHATCONG - 1
EXISTING SEWER SERVICE AREAS**

Wastewater Management Plan
Pohatcong Township, Warren County, New Jersey
November 9, 2015

- NJ0024716 / Phillipsburg STP / HDSF
- NJG0169048 / Elnorah Inc. T/A Stepping Stone School / NON-HDSF
- General Service Area for Wastewater Facilities with Planning Flows of Less Than 2,000 gallons per day (gpd) which Discharge to Ground Water*
- Municipal Boundary
- Highlands Center
- Preservation Area
- Parcels

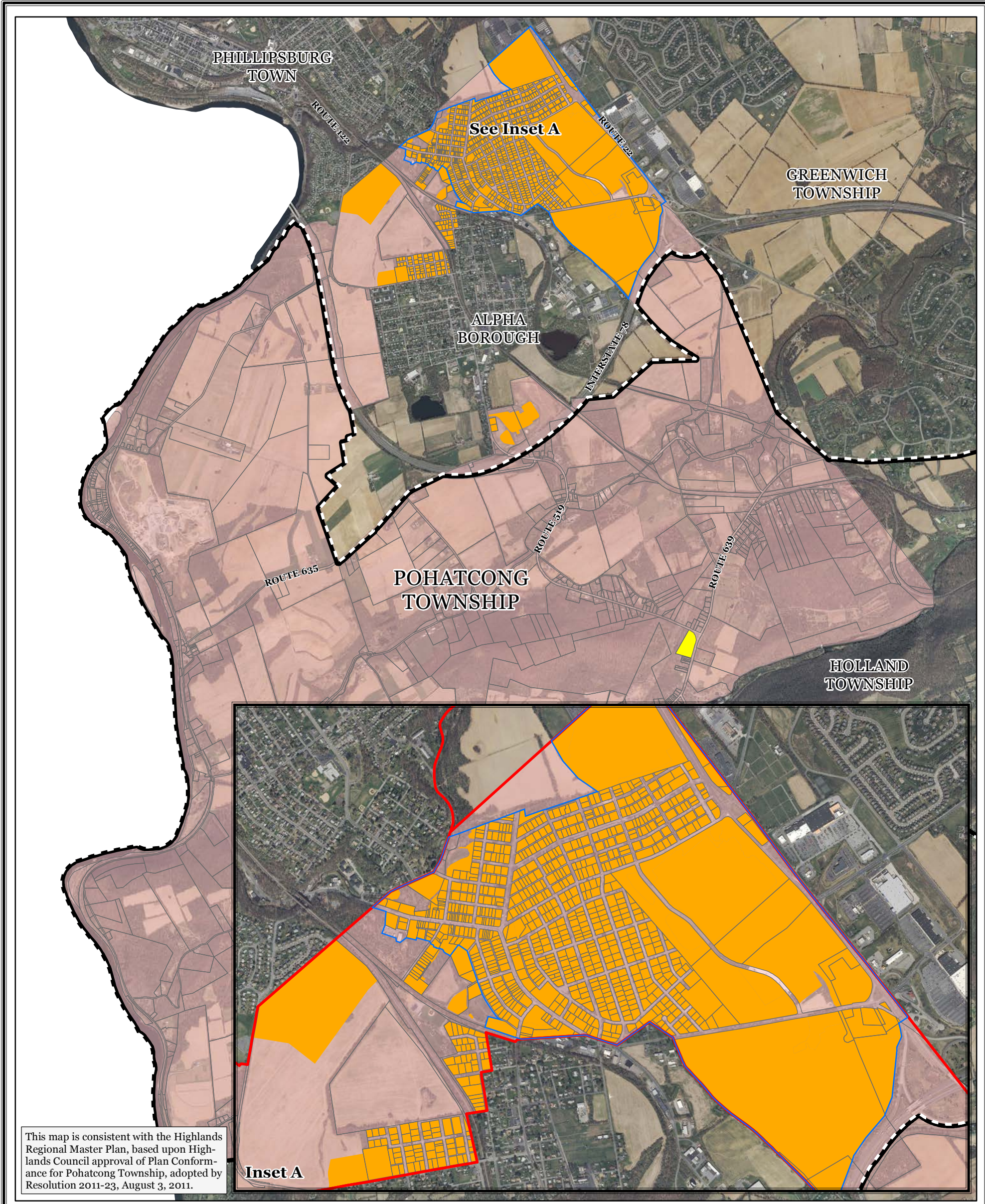
Locator Map



The information contained on this map is the best available according to the Highlands Council. However, unintentional inaccuracies may occur, particularly where data or information is derived from sources other than the Highlands Council. The Highlands Council cannot be responsible for the misuse or misinterpretation of the information presented herein. Therefore, under no circumstances shall the State of New Jersey or specifically, the Highlands Council be liable for any actions taken or omissions made from reliance on any information contained herein from whatever source nor shall the State be liable for any other consequences from any such reliance. Additional sources of information may have been used to collect the GIS digital data, but this secondary product has not been verified by those sources.

*Wastewater flows in excess of 2,000 gpd shall not be permitted in this area unless the Highlands Council has determined that the discharge is consistent with the Regional Master Plan and the discharge is approved by NJDEP as a revision or amendment to this Wastewater Management Plan. This designation includes restriction of individual subsurface sewage disposal system development or subdivisions of 6 units or greater, unless approved under septic system density provisions of the Highlands Land Use Ordinance adopted by Pohatcong Township pursuant to Highlands Council approval of its Petition for Plan Conformance.

Note: This figure incorporates by reference the Mapping Requirements pursuant to N.J.A.C. 7:15-5. See page 4 of the Pohatcong Township Wastewater Management Plan.

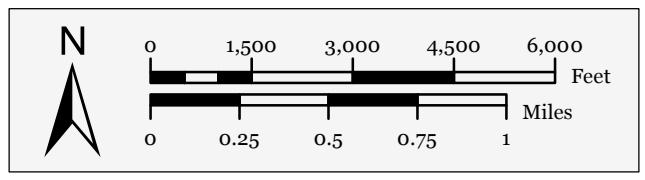


This map is consistent with the Highlands Regional Master Plan, based upon Highlands Council approval of Plan Conformance for Pohatcong Township, adopted by Resolution 2011-23, August 3, 2011.

FIGURE POHATCONG - 2 FUTURE SEWER SERVICE AREAS

Wastewater Management Plan
Pohatcong Township, Warren County, New Jersey
November 9, 2015

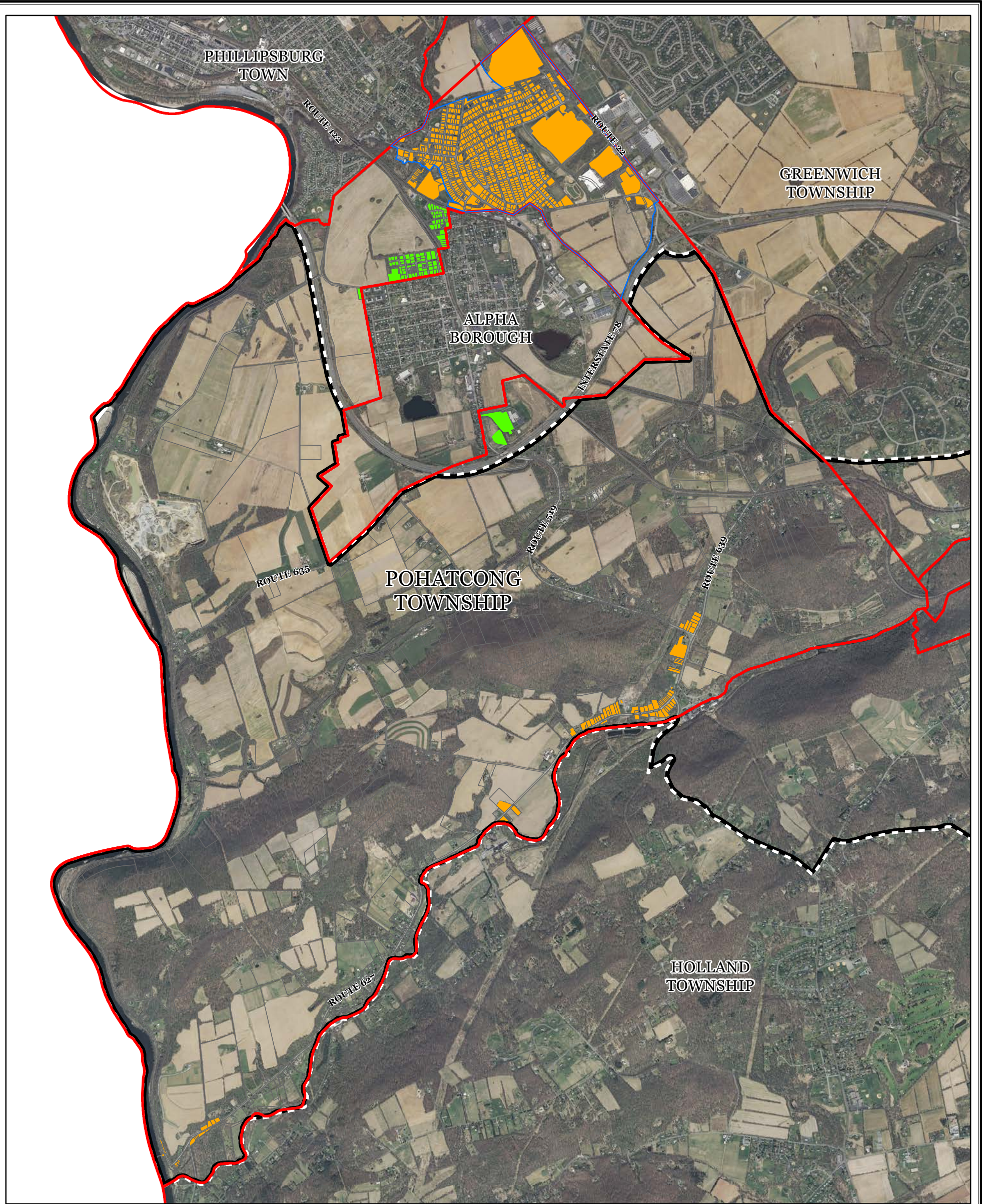
- NJ0024716 / Phillipsburg STP / HDSF
- NJG0169048 / Elnorah Inc. T/A Stepping Stone School / NON-HDSF
- Septic Area (Planning Flows of 2,000 gallons per day (gpd) or Less)*
- Municipal Boundary
- Highlands Center
- Preservation Area
- Parcels



The information contained on this map is the best available according to the Highlands Council. However, unintentional inaccuracies may occur, particularly where data or information is derived from sources other than the Highlands Council. The Highlands Council cannot be responsible for the misuse or misinterpretation of the information presented herein. Therefore, under no circumstances shall the State of New Jersey or specifically, the Highlands Council be liable for any actions taken or omissions made from reliance on any information contained herein from whatever source nor shall the State be liable for any other consequences from any such reliance. Additional sources of information may have been used to collect the GIS digital data, but this secondary product has not been verified by those sources.

*Wastewater flows in excess of 2,000 gpd shall not be permitted in this area unless the Highlands Council has determined that the discharge is consistent with the Regional Master Plan and the discharge is approved by NJDEP as a revision or amendment to this Wastewater Management Plan. This designation includes restriction of individual subsurface sewage disposal system development or subdivisions of 6 units or greater, unless approved under septic system density provisions of the Highlands Land Use Ordinance adopted by Pohatcong Township pursuant to Highlands Council approval of its Petition for Plan Conformance.

Note: This figure incorporates by reference the Mapping Requirements pursuant to N.J.A.C. 7:15-5. See page 4 of the Pohatcong Township Wastewater Management Plan.



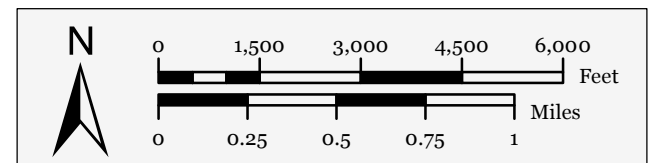
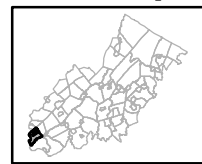
**FIGURE POHATCONG - 3
PUBLIC COMMUNITY WATER SYSTEMS**

Wastewater Management Plan
Pohatcong Township, Warren County, New Jersey
November 9, 2015

Public Community Water Systems Existing Area Served

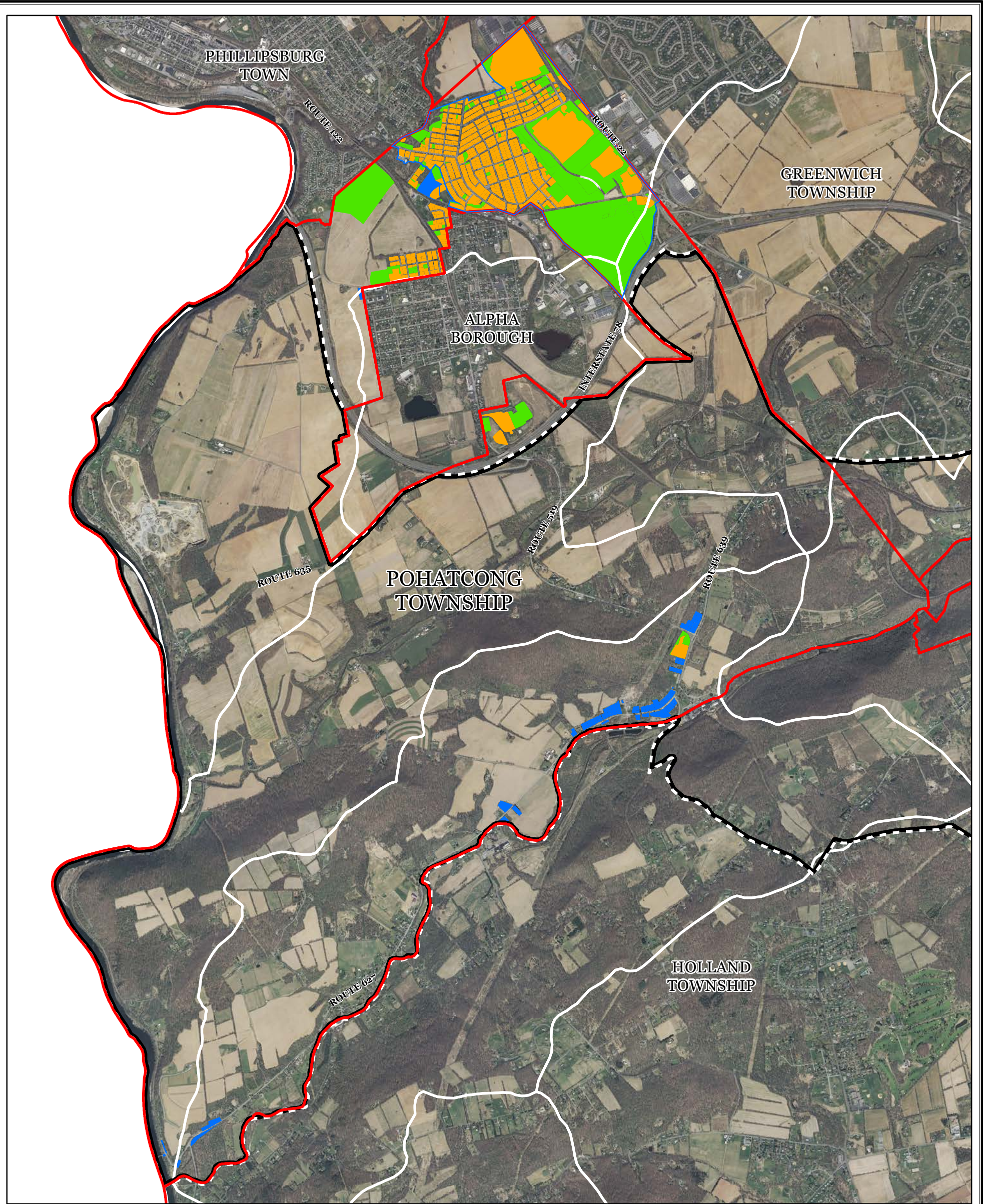
- 2119001 / Aqua New Jersey (Phillipsburg) / Facility #58
- 2102001 / Alpha Municipal Water Works / Facility #54
- Highlands Center
- HUC14 Subwatersheds
- Municipal Boundary
- Preservation Area

Locator Map



The information contained on this map is the best available according to the Highlands Council. However, unintentional inaccuracies may occur, particularly where data or information is derived from sources other than the Highlands Council. The Highlands Council cannot be responsible for the misuse or misinterpretation of the information presented herein. Therefore, under no circumstances shall the State of New Jersey or specifically, the Highlands Council be liable for any actions taken or omissions made from reliance on any information contained herein from whatever source nor shall the State be liable for any other consequences from any such reliance. Additional sources of information may have been used to collect the GIS digital data, but this secondary product has not been verified by those sources.

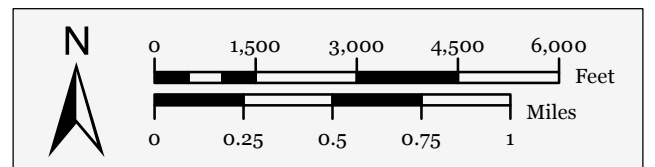
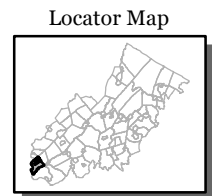
Note: This figure incorporates by reference the Mapping Requirements pursuant to N.J.A.C. 7:15-5. See page 4 of the Pohatcong Township Wastewater Management Plan.



**FIGURE POHATCONG - 4
FUTURE PUBLIC COMMUNITY
WATER SYSTEMS**

Wastewater Management Plan
Pohatcong Township, Warren County, New Jersey
November 9, 2015

- Future Public Community Water Systems**
- Future Sewer Service Area AND Public Community Water System Existing Area Served
 - Future Sewer Service Area ONLY
 - Public Community Water System Existing Area Served ONLY
 - HUC14 Subwatersheds
 - Highlands Center
 - Municipal Boundary
 - Preservation Area



The information contained on this map is the best available according to the Highlands Council. However, unintentional inaccuracies may occur, particularly where data or information is derived from sources other than the Highlands Council. The Highlands Council cannot be responsible for the misuse or misinterpretation of the information presented herein. Therefore, under no circumstances shall the State of New Jersey or specifically, the Highlands Council be liable for any actions taken or omissions made from reliance on any information contained herein from whatever source nor shall the State be liable for any other consequences from any such reliance. Additional sources of information may have been used to collect the GIS digital data, but this secondary product has not been verified by those sources.

Note: This figure incorporates by reference the Mapping Requirements pursuant to N.J.A.C. 7:15-5. See page 4 of the Pohatcong Township Wastewater Management Plan.