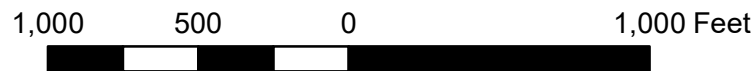
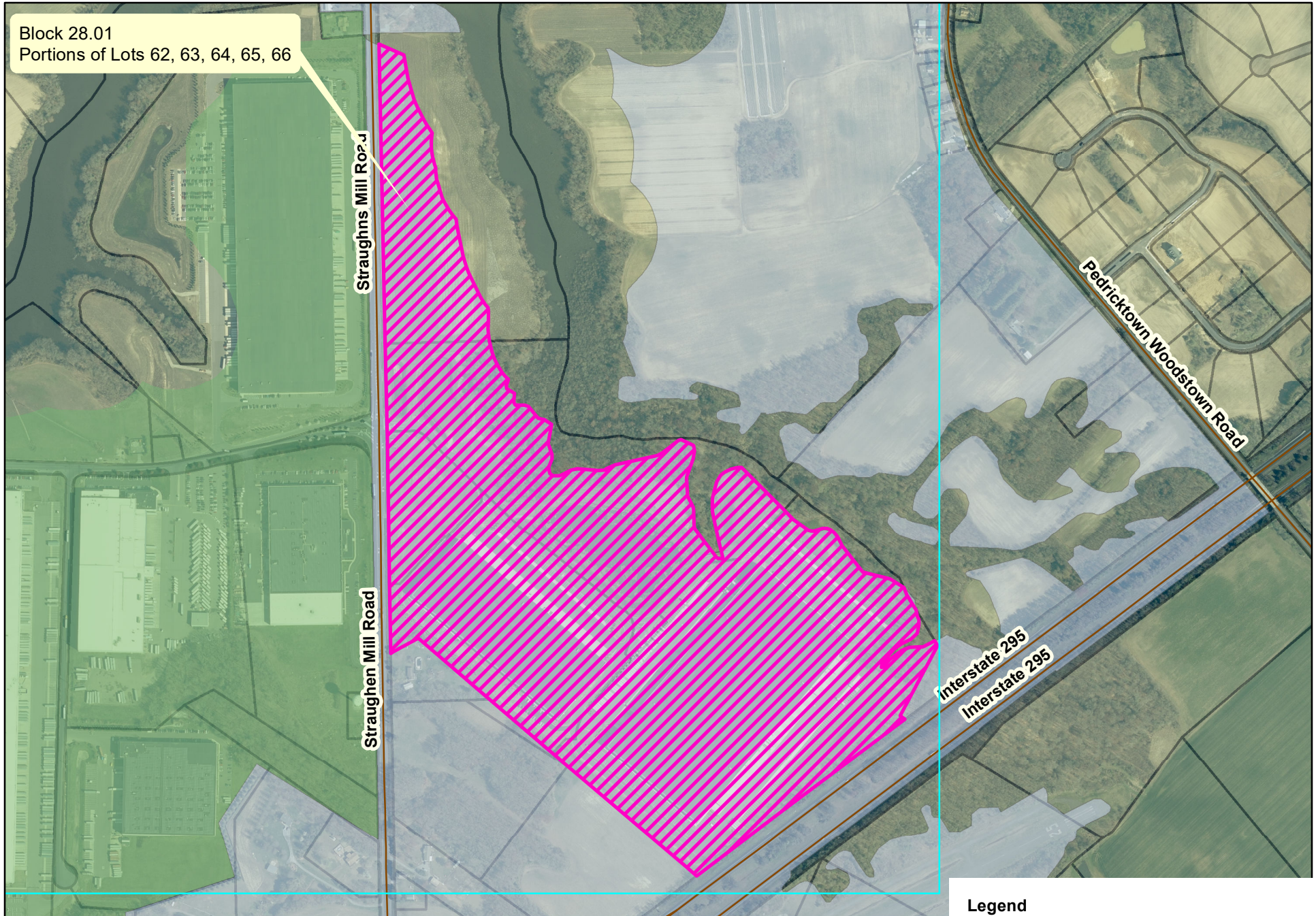




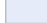


Gateway Business Park Oldmans Township, Salem County Map Revision for TWA No. 17-0067

Block 28.01
Portions of Lots 62, 63, 64, 65, 66



Legend

-  Revised Sewer Service Area
-  Currently Adopted CPTSA Sewer Service Areas
-  Currently Adopted Unassigned Sewer Service Areas