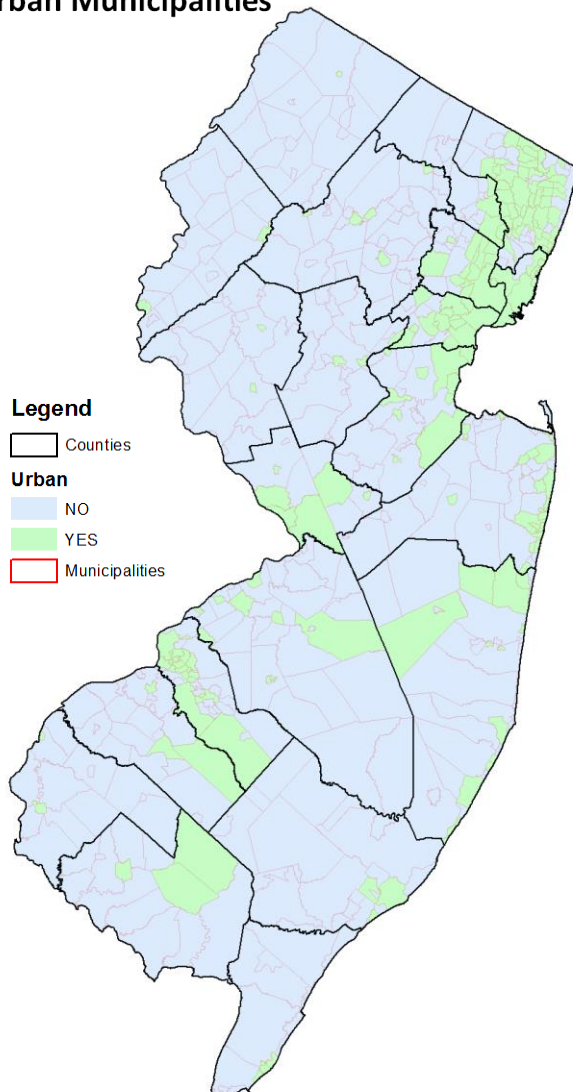


Urbanized Municipalities

Urban Municipalities



Pursuant to the WQMP rules, N.J.A.C. 7:15-1.5, the definition of "urbanized municipalities" means those where 90 percent of the municipality's land area appears as "Urban Lands," as designated in the New Jersey Department of Environmental Protection's most recent Land Use/Land Cover geographical information systems database as amended and updated, available as a digital data download from the Department at www.state.nj.us/dep/gis, based on Level I of the Anderson Classification System (Anderson et al, 1976, modified by the New Jersey Department of Environmental Protection, 1999). Urbanized municipalities also include those municipalities identified as "Urban Aid" municipalities pursuant to the New Jersey Redevelopment Act, N.J.S.A. 55:19-20 et seq.; as an Urban Enterprise Zone pursuant to the New Jersey Urban Enterprise Zones Act, N.J.S.A. 52:27H-60 et seq.; as a "Garden State Growth Zone" municipality pursuant to the New Jersey Economic Opportunity Act of 2013, N.J.S.A. 52:27D-489p et seq.; and as Transit Villages approved by the New Jersey Department of Transportation and NJ Transit.

This map depicts the municipalities across the State that meet the definition of "urbanized municipalities" as of November 7, 2016. Detailed information on the individual municipalities that meet this definition can be found at:

[Abbreviated Listing of Urbanized Municipalities](#)

This list identifies all municipalities by county that meet the definition of urbanized municipalities.

[Detailed Listing of Urbanized Municipalities](#)

This list identifies by category (or categories) in the above definition that an individual municipality has met in order to be considered "urbanized."