

Future Wastewater Service Area

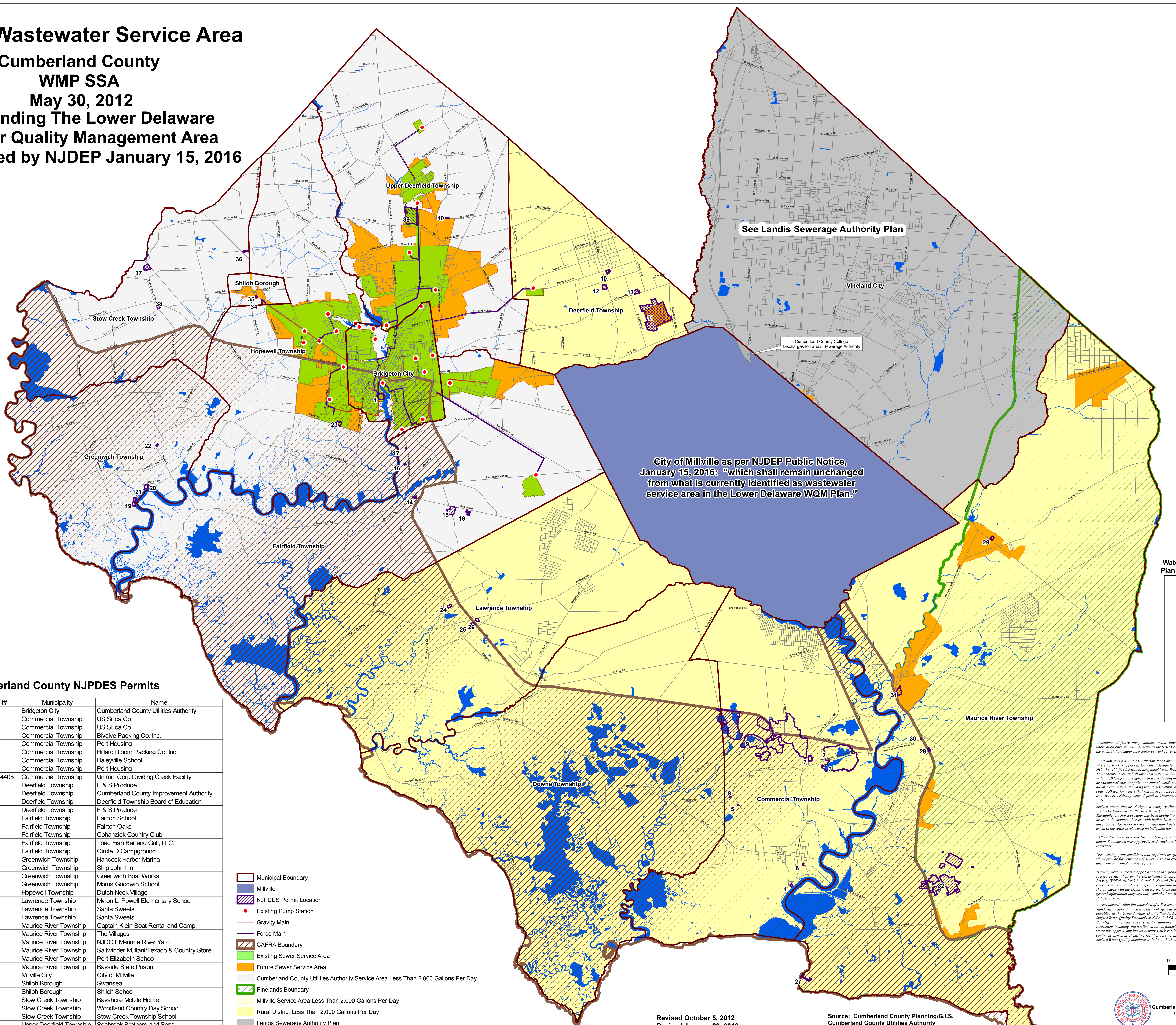
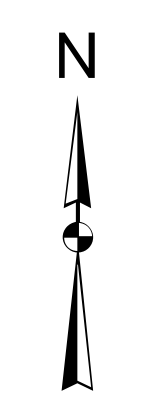
Cumberland County

WMP SSA

May 30, 2012

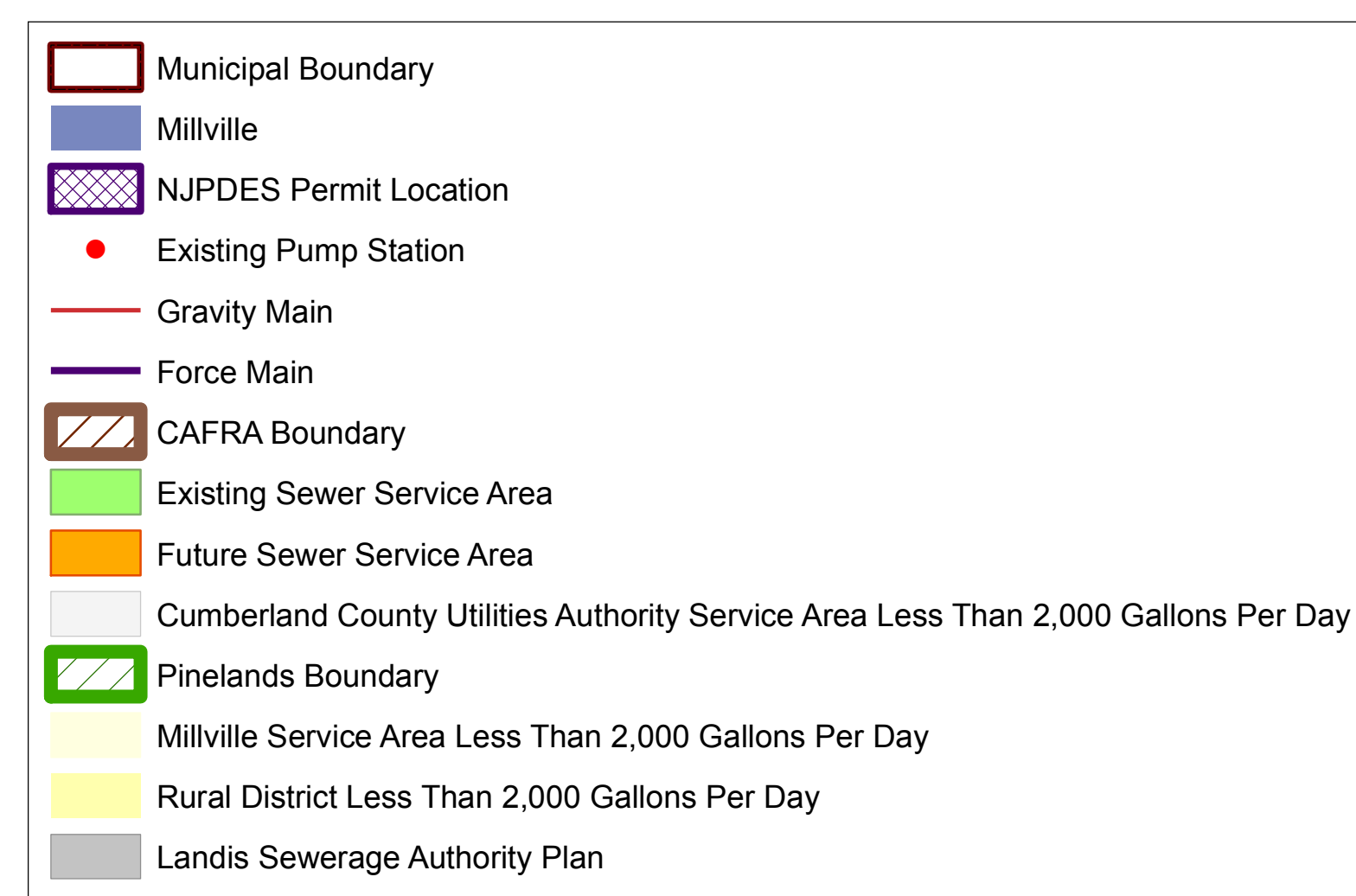
Amending The Lower Delaware
Water Quality Management Area

Approved by NJDEP January 15, 2016

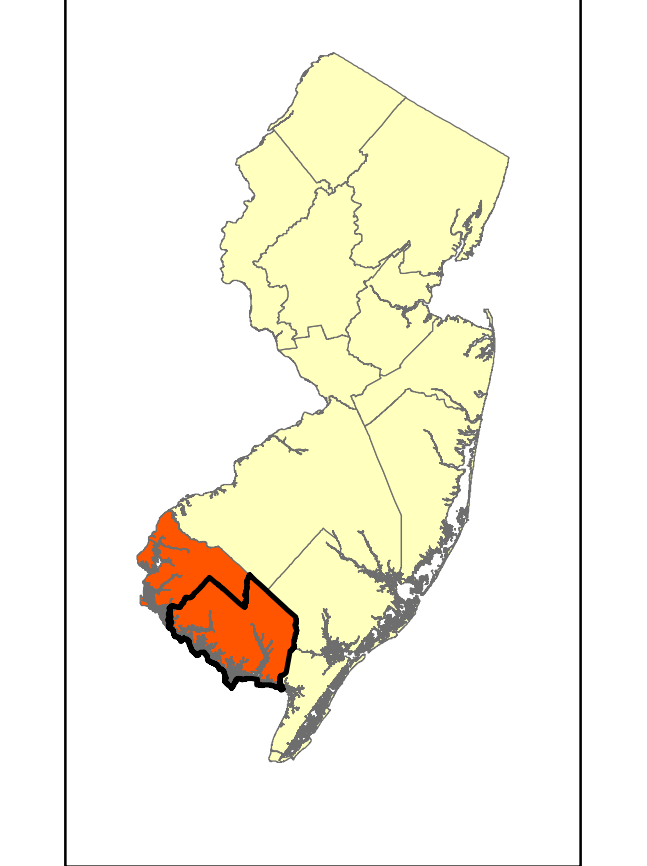


Cumberland County NJPDES Permits

ID	TYPE	NJPDES Permit#	Municipality	Name
1	SW	NJ0024651	Bridgeton City	Cumberland County Utilities Authority
2	SW	NJ0004251	Commercial Township	US Silica Co
3	GW	NJ0101699	Commercial Township	US Silica Co
4	SW	NJ0029696	Commercial Township	Bivalve Packing Co. Inc.
5	T-1	NJG0133540	Commercial Township	Port Housing
6	GW	NJG075159	Commercial Township	Hillard Bloom Packing Co. Inc
7	T-1	NJG00883682	Commercial Township	Haleyville School
8	T-1	NJG0133647	Commercial Township	Port Housing
9	GW/SW	NJ0089362, NJ0004405	Commercial Township	Unimin Corp Dividing Creek Facility
10	GW	NJ 0068756	Deerfield Township	F & S Produce
11	GW	NJ 0102555	Deerfield Township	Cumberland County Improvement Authority
12	GW	NJ 0089001	Deerfield Township	Deerfield Township Board of Education
13	GW	NJ 0051055	Deerfield Township	F & S Produce
14	--	--	Fairfield Township	Fairton School
15	GW	NJ0084018	Fairfield Township	Fairton Oaks
16	T-1	NJG0072508	Fairfield Township	Cohanzick Country Club
17	T-1	NJG0156442	Fairfield Township	Toad Fish Bar and Grill, LLC.
18	T-1	NJG0089486	Fairfield Township	Circle D Campground
19	T-1	NJG0141313	Greenwich Township	Hancock Harbor Marina
20	--	--	Greenwich Township	Ship John Inn
21	--	--	Greenwich Township	Greenwich Boat Works
22	--	--	Greenwich Township	Morris Goodwin School
23	--	--	Hopewell Township	Dutch Neck Village
24	GW	NJ0132667	Lawrence Township	Myron L. Powell Elementary School
25	T-1	NJ0137987	Lawrence Township	Santa Sweets
26	GW	NJ0137987	Lawrence Township	Santa Sweets
27	T-1	NJG0135801	Maurice River Township	Captain Klein Boat Rental and Camp
28	T-1	NJG0089249	Maurice River Township	The Villages
29	GW	NJ0102725	Maurice River Township	NJDOT Maurice River Yard
30	T-1	NJG0169731	Maurice River Township	Saltwinder Muttan/Texaco & Country Store
31	T-1	NJG0128503	Maurice River Township	Port Elizabeth School
32	SW	NJ0102849	Maurice River Township	Bayside State Prison
33	SW	NJ0029467	Millville City	City of Millville
34	--	--	Shiloh Borough	Swansea
35	--	--	Shiloh Borough	Shiloh School
36	T-1	NJG0085839	Stow Creek Township	Bayshore Mobile Home
37	--	--	Stow Creek Township	Woodland Country Day School
38	--	--	Stow Creek Township	Stow Creek Township School
39	GW	NJ0087602	Upper Deerfield Township	Seabrook Brothers and Sons
40	T-1	NJG0174483	Upper Deerfield Township	Seabrook Housing Corporation



Lower Delaware Water Quality Management Planning Area Location Map



"Locations of future pump stations, major interceptors, and trunk sewers are being provided for general information only and will not serve as the basis for any future consistency determinations or permit reviews unless the pump station, major interceptor or trunk sewer is part of a State or federally funded project."

"Pursuant to N.J.A.C. 7:15, Riparian zones are 100 feet from top of bank for confluence of a first order stream where no bank is apparent for waters designated as Category One and all upstream tributaries within the same HUC. 14, 150 feet for waters designated Trout Production and all upstream waters; 150 feet for water designated Trout Maintenance and all upstream waters within one linear mile of the riparian zone; 150 feet for any segment of water flowing through an area that contains documented habitat for a threatened or endangered species of plant or animal, which is critically dependent on the surface water body for survival, and all upstream waters (including tributaries) within one linear mile as measured along the length of the surface water body; 150 feet for waters that run through acid-producing soils; and, 50 feet for all waters not designated as C1, trout waters, critically water dependent Threatened and/or Endangered Species Habitat, or associated with acid soils."

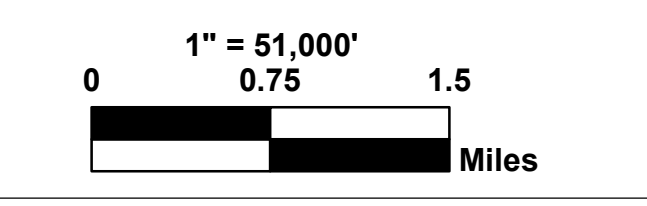
"Surface waters that are designated Category One are listed in the Surface Water Quality Standards at N.J.A.C. 7:9B. The Department's Surface Water Quality Standards GIS data layer was utilized to determine these waters. The applicable 300 foot buffer has been applied to these waters and removed from the proposed sewer service areas on the mapping. Error width buffers have not been graphically removed from the sewer service areas but are not proposed for sewer service. Additional determinations by the Department will be utilized to determine the extent of the sewer service areas on individual lots."

"All existing, new, or expanded industrial pretreatment facilities requiring Significant Indirect User (SIU) permits under Treatment Works Approvals, and which are located within the specified sewer service area, are deemed to be consistent."

"Pre-existing grant conditions and requirements (from Federal and State grants or loans for sewerage facilities) which provide for restrictions of sewer service to environmentally sensitive areas, are unaffected by adoption of this document and compliance is required."

"Development in areas mapped as wetlands, flood prone areas, suitable habitat for endangered and threatened species as identified on the Department's Landscape Maps of Habitat for Endangered, Threatened and Other Priority Wildlife as Bank 1, 4 and 5, National Heritage Program Sites, riparian zones, steep slopes or designated river areas may be subject to special regulation under Federal or State statutes or rules, and interested persons should check with the Department for the latest information. Any depiction of environmental features shall be for general information purposes only, and shall not be construed to define the legal geographic jurisdiction of such statutes or rules."

"Areas located within the watershed of a Freshwater One (FW1) system, as classified in the Surface Water Quality Standards, and/or that have Class 1-3 ground water (Ground Water of Special Ecological Significance), as classified in the Ground Water Quality Standards, are identified as "Non-discharge water area based on the Surface Water Quality Standards at N.J.A.C. 7:9B, and/or the Ground Water Quality Standards at N.J.A.C. 7:9A." Non-discharge water areas shall be maintained in their natural state not suitable for potential discharge to ground water including, but not limited to, the following: 1) DEP will not approve any pollutant discharge to ground water nor approve any human activity which results in a degradation of natural quality except for the repair or continued operation of existing facilities serving existing developments. For additional information please see the Surface Water Quality Standards at N.J.A.C. 7:9B, and/or the Ground Water Quality Standards at N.J.A.C. 7:9A."



Submitted by:
Robert G. Brewer, P.E., A.I.C.P.
Planning Director
on behalf of the
Cumberland County Board of Chosen Freeholders
as Wastewater Planning Agency
790 East Commerce Street
Bridgeton, NJ 08302
Tel: 856-453-2175
Fax: 856-453-9138

Revised October 5, 2012
Revised January 20, 2016

Source: Cumberland County Planning/G.I.S.
Cumberland County Utilities Authority
City of Millville Department of Engineering
New Jersey Department of Environmental Protection