

For facility information refer to municipal maps

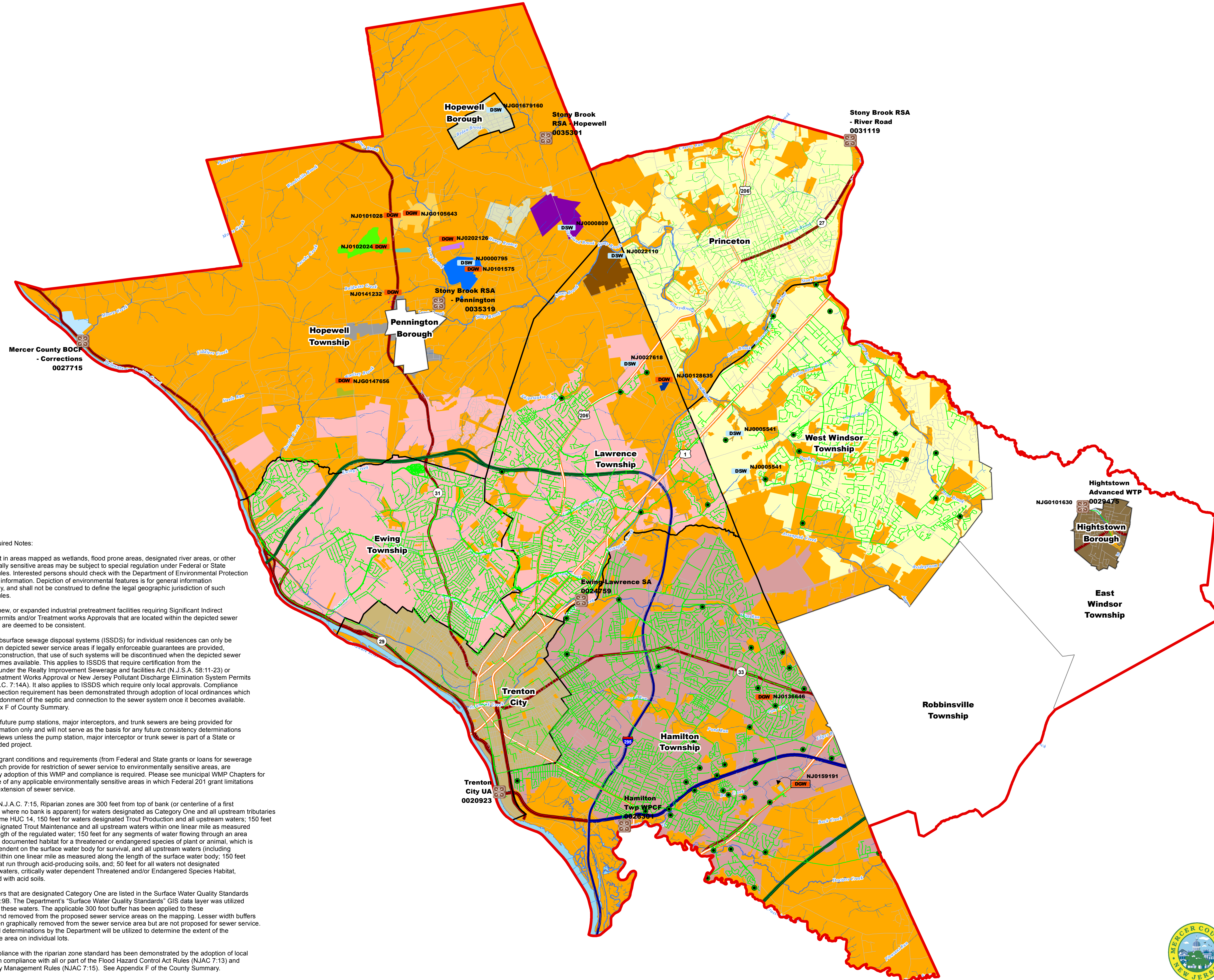
Mercer County

Wastewater Management Plan

June 2012 Revised: February 28, 2013; July 26, 2013; August 27, 2013; October 3, 2013; October 17, 2013

Map 3

Future Wastewater Service Areas



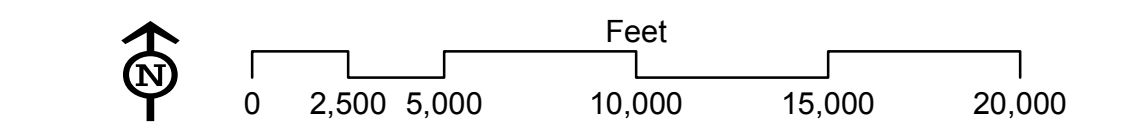
- Wastewater Management Planning Area
- WWTP
- DSW DSW
- DGW DGW
- Pump Station
- Sewer
- Municipal Boundary
- Local Road
- Inter-State Highway
- Toll Highway
- State Highway
- US Highway
- Hydrologic Feature (River, Stream, Creek)
- Hydrologic Features (Lake, Reservoir, Major River)

- Facility Name, NJPDES**
- 84 Lumber
 - Bristol-Myers Squibb Co., NJ0000795⁽¹⁾
 - City of Trenton Waste Water Treatment Plant, NJ0020923
 - East Windsor MUA, NJ0023787
 - Educational Testing Service, NJ0022110
 - Ewing Lawrence Sewerage Authority, NJ0024759
 - Hamilton Township WPCF, NJ0026301
 - Hightstown Borough STP, NJ0029475
 - Hopewell Business Center, NJ0000809
 - Hopewell Township Municipal Complex, NJG0147656
 - Mercer County BOCF - Corrections, NJ0027715
 - Pennington Point West - Phase II, NJ0141232
 - Pennington Quarry, NJ0102024
 - Pennytown/Kooltronics Redevelopment Area, TBD
 - SBRSA Hopewell STP, NJ0035301
 - SBRSA River Road STP, NJ0031119
 - SBRSA-Pennington STP, NJ0035319
 - Stony Brook Millstone Watershed Association, TBD (Proposed Permit #NJ0202126)
 - The Chapin School, NJG0128635
 - US Postal Service Hamilton, NJ0159191
 - Individual Subsurface Sewage Disposal (ISSDS)

(1) Includes sewer service area for flows conveyed to SPRSA-Pennington STP, NJ0035319

Note:
The following municipalities: Pennington Borough, Robbinsville Township and East Windsor Township are now incorporated by reference as the applicable municipal chapters into the County-wide WMP. For the Future Wastewater Service Areas designations within these municipalities please refer to Map 3, Future SSA in the respective previously approved WMPs.

Data Sources:
Hydrologic Feature: Stream Network (Mercer County-Lower Del, Lower Hud, Upper Del)
Developed by NJDEP, Office of Information Resources Management, Bureau of Geographic Information Systems



NJDEP Required Notes:

Development in areas mapped as wetlands, flood prone areas, designated river areas, or other environmentally sensitive areas may be subject to special regulation under Federal or State statutes or rules. Interested persons should check with the Department of Environmental Protection for the latest information. Depiction of environmental features is for general information purposes only, and shall not be construed to define the legal geographic jurisdiction of such statutes or rules.

All existing, new, or expanded industrial pretreatment facilities requiring Significant Indirect user (SIU) permits and/or Treatment works Approvals that are located within the depicted sewer service area, are deemed to be consistent.

Individual subsurface sewage disposal systems (ISSDS) for individual residences can only be constructed in depicted sewer service areas if legally enforceable guarantees are provided before such construction, that use of such systems will be discontinued when the depicted sewer service becomes available. This applies to ISSDS that require certification from the Department under the Realty Improvement Sewerage and facilities Act (N.J.S.A. 58:11-23) or individual Treatment Works Approval or New Jersey Pollutant Discharge Elimination System Permits (under N.J.A.C. 7:14A). It also applies to ISSDS which require only local approvals. Compliance with the connection requirement has been demonstrated through adoption of local ordinances which require abandonment of the septic and connection to the sewer system once it becomes available. See Appendix F of County Summary.

Locations of future pump stations, major interceptors, and trunk sewers are being provided for general information only and will not serve as the basis for any future consistency determinations or permit reviews unless the pump station, major interceptor or trunk sewer is part of a State or federally funded project.

Pre-existing grant conditions and requirements (from Federal and State grants or loans for sewerage facilities) which provide for restriction of sewer service to environmentally sensitive areas, are unaffected by adoption of this WMP and compliance is required. Please see municipal WMP Chapters for the existence of any applicable environmentally sensitive areas in which Federal 201 grant limitations prohibit the extension of sewer service.

Pursuant to N.J.A.C. 7:15, Riparian zones are 300 feet from top of bank (or centerline of a first order stream where no bank is apparent) for waters designated as Category One and all upstream tributaries within the same HUC 14, 150 feet for waters designated Trout Production and all upstream waters; 150 feet for water designated Trout Maintenance and all upstream waters within one linear mile as measured along the length of the regulated water; 150 feet for any segments of water flowing through an area that contains documented habitat for a threatened or endangered species of plant or animal, which is critically dependent on the surface water body for survival, and all upstream waters (including tributaries) within one linear mile as measured along the length of the surface water body; 150 feet for waters that run through acid-producing soils, and; 50 feet for all waters not designated as C1, trout waters, critically water dependent Threatened and/or Endangered Species Habitat, or associated with acid soils.

Surface waters that are designated Category One are listed in the Surface Water Quality Standards at N.J.A.C. 7:9B. The Department's "Surface Water Quality Standards" GIS data layer was utilized to determine these waters. The applicable 300 foot buffer has been applied to these waterways and removed from the proposed sewer service areas on the mapping. Lesser width buffers have not been graphically removed from the sewer service area but are not proposed for sewer service. Jurisdictional determinations by the Department will be utilized to determine the extent of the sewer service area on individual lots.

Further compliance with the riparian zone standard has been demonstrated by the adoption of local ordinances in compliance with all or part of the Flood Hazard Control Act Rules (NJAC 7:13) and Water Quality Management Rules (NJAC 7:15). See Appendix F of the County Summary.

