

FUTURE WASTEWATER SEWER SERVICE AREAS

SOMERSET COUNTY, NJ

Amending the Upper Raritan and Northeast Areawide Water Quality Management Plans

Legend

*Area not subject to adoption at this time. It will be addressed through the Lower Raritan / Middlesex County Water Quality Management Plan amendment process.

FUTURE SERVICE AREAS FOR FACILITIES DISCHARGING TO SURFACE WATER (SW)

- Berkeley Heights WTP (NJ0027961)
- Borough of Bernardsville STP (NJ0026387)
- Carrier Foundation STP (NJ0023663)
- Cherry Valley Country Club STP (NJ0023663)
- Environmental Disposal Corporation WTP (NJ0033995)
- Fiddler's Elbow Country Club (NJ0021865)
- Harrison Brook STP (NJ0022845)
- Middlesex County Utility Authority (NJ0020141)
- Oxbridge STP (NJ0067733)
- Pike Brook (NJ0060038)
- Riverside Farms (NJ0050130)
- Skillman Village WTP (NJ00223900)
- Somerset Raritan Valley SA (NJ0067733)
- Stage II (NJ0026905)
- Veterans Administration (NJ0021083)
- Warren Township SA Stage I & II (NJ0022489)
- Warren Township SA Stage IV (NJ0022497)
- Warren Township SA Stage V (NJ0050369)

FUTURE SERVICE AREAS FOR FACILITIES DISCHARGING TO GROUNDWATER (GWIND)

- 3M Quarry (NJ01300281)
- Amwell Valley Country Club (NJG0141607)
- Crossings at Bedens Brook (NJG0132811)
- Duke Farms (NJ0145831)
- Essex Hunt Club (NJG0176532)
- Far Hills Country Day School (NJG0127876)
- Hamilton Farm WTP (NJ0087343)
- Hillsborough Chase (NJ0146064)
- Mattawang Golf Club LLC (NJG0134911)
- Montgomery Knoll Office Condos (NJ0087327)
- Neshanic Valley Golf Course (NJ0141208)
- Princeton Montessori School (NJ0100501)
- Purnell School (NJG0136328)
- Somerset Hills Country Club (NJ0141488)
- St Charles Borromeo Church (NJ0142611)
- The Albrook School (NJG0132969)
- The Royce Brook Golf Club (NJ0105562)
- Trump National (NJ0142883)
- Tusk Fusion Restaurant (NJG0160598)
- US Golf Association (NJ0087378)
- Waldorf School (NJ0134210)
- Willow School (NJ0141801)

- Septic Areas
- Highlands Preservation Area
- Highlands Planning Area
- Wastewater Management Planning Area / County Boundary
- Water Quality Management Plan Boundaries

EXISTING AND PROPOSED NJPDES PERMITTED DISCHARGE LOCATIONS

- Surface Water Discharge (DSW)
- Groundwater Discharge (DGW)

WASTEWATER FACILITIES

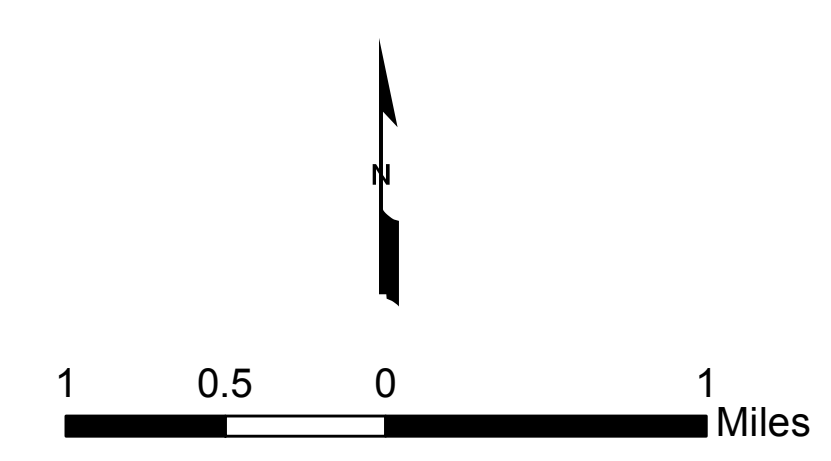
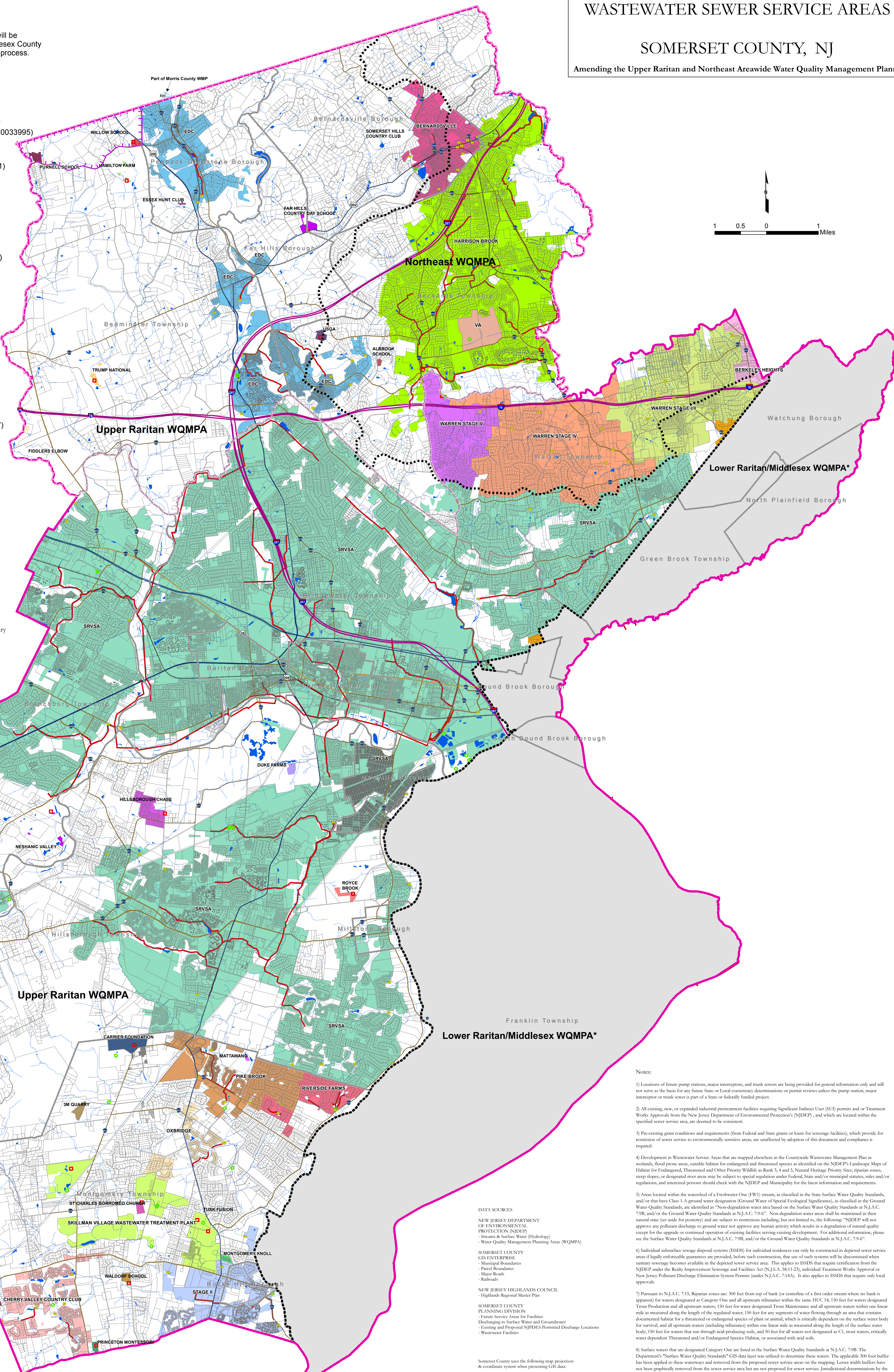
- Pump Station
- Trunk Lines / Interceptors

STREAMS AND WATER BODIES

- Streams
- Municipal Boundaries
- Parcel Boundaries

MAJOR ROADS

- Interstate Highway
- US Highway
- State Highway
- County Road
- Railroads



- Notes:
- 1) Locations of future pump stations, major interceptors, and trunk sewers are being provided for general information only and will not serve as the basis for any future State or Local consistency determinations or permit reviews unless the pump station, major interceptor or trunk sewer is part of a State or federally funded project.
 - 2) All existing, new, or expanded industrial pretreatment facilities requiring Significant Indirect User (SIU) permits and/or Treatment Works Approvals from the New Jersey Department of Environmental Protection's (NJDEP), and which are located within the specified sewer service area, are deemed to be consistent.
 - 3) Pre-existing grant conditions and requirements (from Federal and State grants or loans for sewerage facilities), which provide for restriction of sewer service to environmentally sensitive areas, are unaffected by adoption of this document and compliance is required.
 - 4) Development in Wastewater Service Areas that are mapped elsewhere in the Countywide Wastewater Management Plan as wetlands, flood prone areas, suitable habitat for endangered and threatened species as identified on the NJDEP's Landscape Maps of Habitat for Endangered, Threatened and Other Priority Wildlife as Rank 3, 4 and 5, Natural Heritage Priority Sites, riparian zones, steep slopes, or designated river areas may be subject to special regulation under Federal, State and/or municipal statutes, rules and/or regulations, and interested persons should check with the NJDEP and Municipality for the latest information and requirements.
 - 5) Areas located within the watershed of a Freshwater One (FW1) stream, as classified in the State Surface Water Quality Standards, and/or that have Class 1-A ground water designation (Ground Water of Special Ecological Significance), as classified in the Ground Water Quality Standards, are identified as "Non-degradation water area based on the Surface Water Quality Standards at N.J.A.C. 7:9B, and/or the Ground Water Quality Standards at N.J.A.C. 7:9C." Non-degradation water areas shall be maintained in their natural state (set aside for posterity) and are subject to restrictions including, but not limited to, the following: "NJDEP will not approve any pollutant discharge to ground water nor approve any human activity which results in a degradation of natural quality except for the upgrade or continued operation of existing facilities serving existing development. For additional information, please see the Surface Water Quality Standards at N.J.A.C. 7:9B, and/or the Ground Water Quality Standards at N.J.A.C. 7:9C."
 - 6) Individual subsurface sewage disposal systems (ISSDS) for individual residences can only be constructed in depicted sewer service areas if legally enforceable guarantees are provided, before such construction, that use of such systems will be discontinued when sanitary sewerage becomes available in the depicted sewer service area. This applies to ISSDS that require certification from the NJDEP under the Realty Improvement Sewerage and Facilities Act (N.J.S.A. 88:11-23), individual Treatment Works Approval or New Jersey Pollutant Discharge Elimination System Permits (under N.J.S.A. 7:14A). It also applies to ISSDS that require only local approvals.
 - 7) Pursuant to N.J.A.C. 7:15, Riparian zones are: 300 feet from top of bank (or centerline of a first order stream where no bank is apparent) for waters designated as Category One and all upstream tributaries within the same HUC 14; 150 feet for waters designated "First Production and all upstream waters; 150 feet for water designated "First Maintenance and all upstream waters within one linear mile as measured along the length of the regulated water body; 150 feet for any segments of water flowing through an area that contains documented habitat for a threatened or endangered species of plant or animal, which is critically dependent on the surface water body for survival, and all upstream waters (including tributaries) within one linear mile as measured along the length of the surface water body; 150 feet for waters that run through acid-producing soils, and 50 feet for all waters not designated as C1, trout waters, critically water dependent Threatened and/or Endangered Species Habitat, or associated with acid soils.
 - 8) Surface waters that are designated Category One are listed in the Surface Water Quality Standards at N.J.A.C. 7:9B. The Department's "Surface Water Quality Standards" GIS data layer was utilized to determine these waters. The applicable 300 foot buffer has been applied to these waterways and removed from the proposed sewer service areas on the mapping. Lesser width buffers have not been graphically removed from the sewer service area but are not proposed for sewer service. Jurisdictional determinations by the Department will be utilized to determine the extent of the sewer service area on individual lots.
 - 9) Municipalities and/or Municipal Utility/Sewerage Authorities own and operate local wastewater conveyance systems.

- DATA SOURCES
- NEW JERSEY DEPARTMENT OF ENVIRONMENTAL PROTECTION (NJDEP)
- Streams & Surface Water (Hydrology)
 - Water Quality Management Planning Areas (WQMPA)
- SOMERSET COUNTY GIS ENTERPRISE
- Municipal Boundaries
 - Parcel Boundaries
 - Major Roads
 - Railroads
- NEW JERSEY HIGHLANDS COUNCIL
- Highlands Regional Master Plan
- SOMERSET COUNTY PLANNING DIVISION
- Future Service Areas for Facilities Discharging to Surface Water and Groundwater
 - Existing and Proposed NJPDES Permitted Discharge Locations
 - Wastewater Facilities

Somerset County uses the following map projection and coordinate system when presenting GIS data:

- Horizontal: North American Datum 1983 (NAD83)
- Vertical: North American Vertical Datum 1987 (NAVD87)
- Coordinate System: New Jersey State Plane Feet