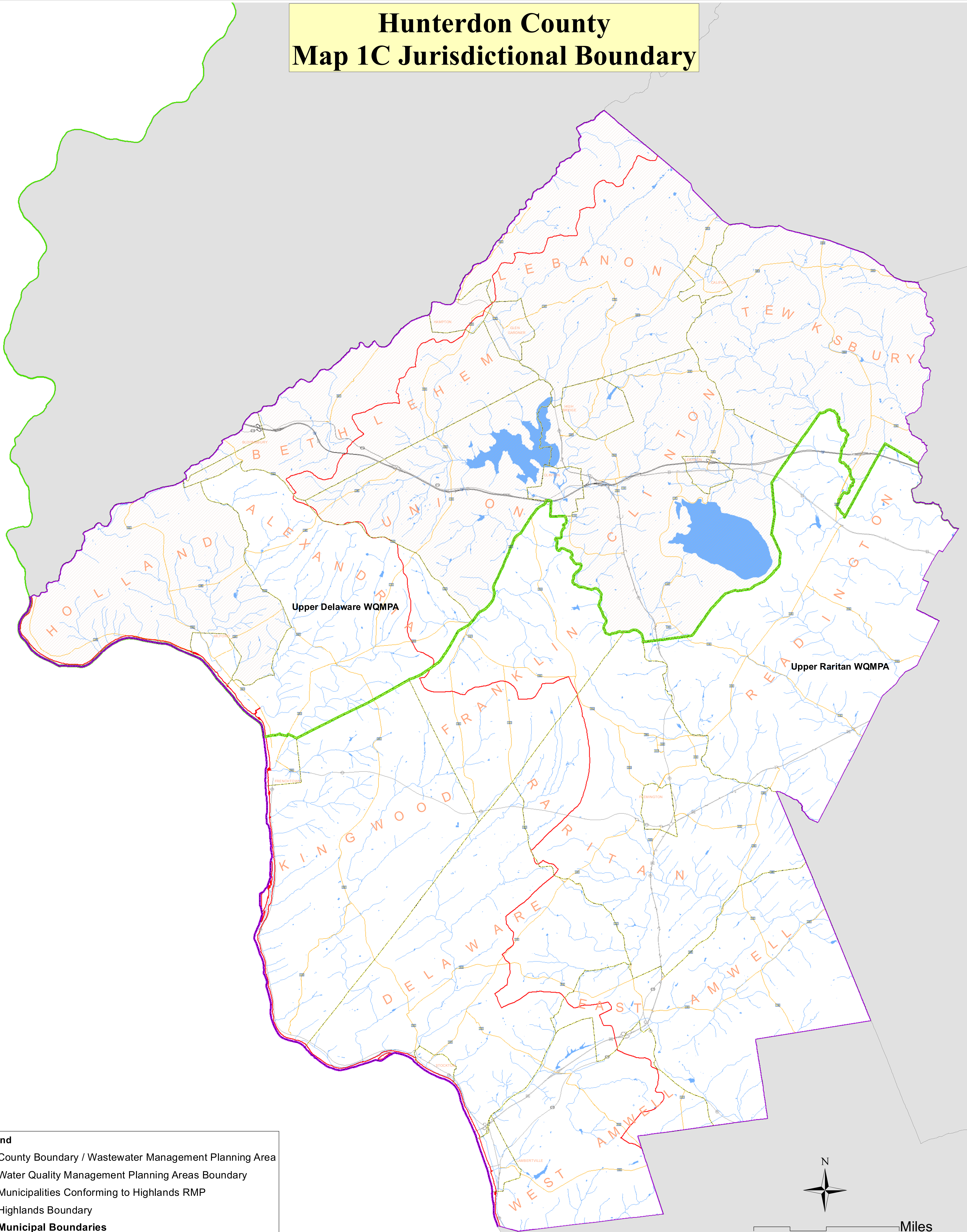


Hunterdon County

Map 1C Jurisdictional Boundary

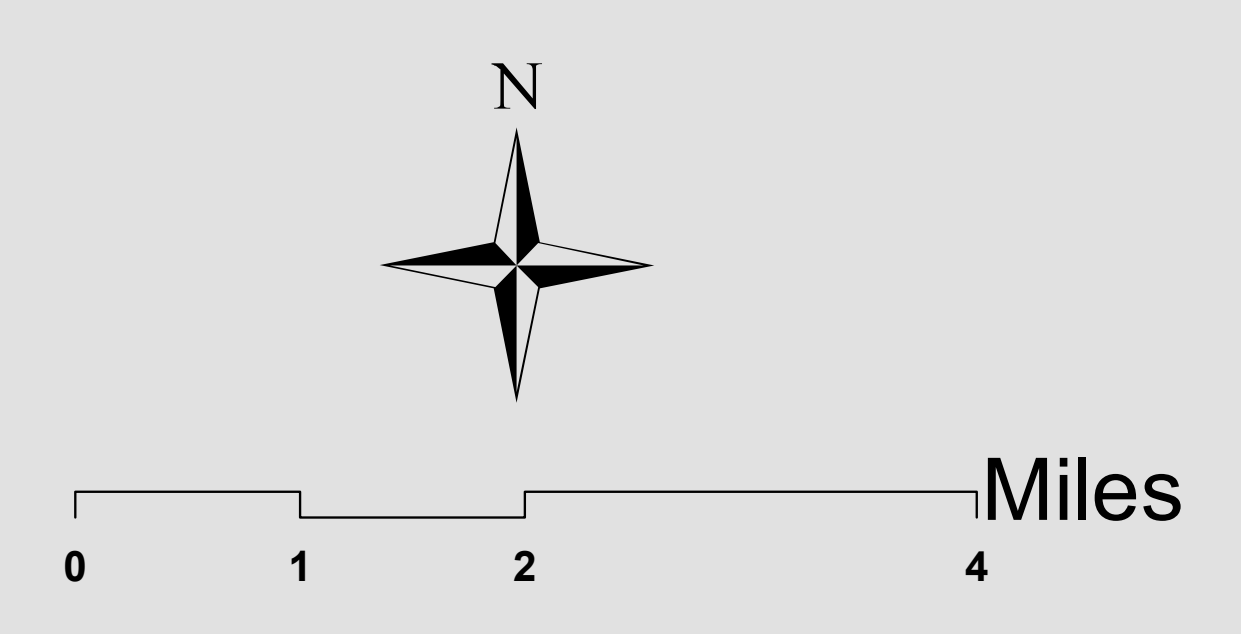


Legend

- County Boundary / Wastewater Management Planning Area
- Water Quality Management Planning Areas Boundary
- Municipalities Conforming to Highlands RMP
- Highlands Boundary
- Municipal Boundaries
- Streams and Surface Water

Major Roads

- Interstate Routes
- U.S. Routes
- State Routes
- County Roads



Submitted by the Hunterdon County Board of Chosen Freeholders as Wastewater Management Planning Agency
 Date of Current Submittal: January 2014
 Prepared by:
 Hunterdon County Planning Department
 PO Box 2900
 (908) 788-1490

Hunterdon County

MAP 2C - Existing and Future Wastewater Service Areas

NOTES:

Locations of pump stations, major interceptors, and trunk sewers are being provided for general information only and will not serve as the basis for any future consistency determinations or permit reviews unless the pump station, major interceptor or trunk sewer is part of a State or Federally funded project.
Major Trunk Lines and interceptors are shown for the following Municipal Utility Authorities:
Town of Clinton Wastewater Treatment Plant, Lambertville Sewerage Authority, Milford Borough Sewer Utility, Frenchtown Boro STP

Pursuant to N.J.A.C. 7.15, Riparian zones are 300 feet from top of bank (or centerline of a first order stream where no bank is apparent) for waters designated as Category One and all upstream tributaries within the same HUC. 14, 150 feet for waters designated Trout Productions and all upstream waters. 150 feet for water designated Trout Maintenance and all upstream waters within one linear mile as measured along the length of the regulated water. 150 feet for any segments of water flowing through an area that contains documented habitat for a threatened or endangered species of plant or animal, which is critically dependent on the surface water body for survival, and all upstream waters (including tributaries) within one linear mile as measured along the length of the surface water body. 150 feet for waters that run through acid-producing soils, and 50 feet for all waters not designated as C1, trout waters, critically water dependent Threatened and/or Endangered Species Habitat, or associated with acid soils.

Surface waters that are designated Category One are listed in the Surface Water Quality Standards at N.J.A.C. 7.9B. The Department's "Surface Water Quality Standards" GIS Data Layer was utilized to determine these waters. The appropriate 300 foot buffer has been applied to these waterways and removed from the proposed sewer service areas on the mapping. Lesser width buffers have not been graphically removed from the sewer service area but are not proposed for sewer service. Jurisdictional determinations by the Department will be utilized to determine the extent of the sewer service area on individual lots.

Furthermore, compliance with the riparian zone standard has been demonstrated by the adoption of municipal Riparian Corridor Ordinances which have been updated to be in compliance with the Flood Hazard Control Act Rules (N.J.A.C. 7.26) and Water Quality Management Rules (N.J.A.C. 7.15). See municipal chapters for additional information.
Individual subsurface sewage disposal systems (SSDS) for individual residences can only be constructed in depicted sewer service areas if legally enforceable guarantees are provided, before such construction, that use of such systems will be discontinued when the depicted sewer service becomes available. This applies to SSDS that require certification from the Department under the Ready Improvement Sewerage and Facilities Act (N.J.S.A. 11:27) or individual Treatment Works Approval or New Jersey Pollutant Discharge Elimination System Permits (under N.J.A.C. 7.14A). It also applies to SSDS which require only local approvals. Compliance with the connection requirement has been demonstrated through adoption of municipal and/or sewerage authority ordinances. See municipal chapters for additional information.

"Development in areas mapped as wetlands, flood prone areas, suitable habitat for endangered and threatened species as identified on the Department's Landscape Maps of Habitat for Endangered, Threatened and Other Priority Wildlife as Rank 3, 4, and 5, Natural Heritage Priority Sites, Riparian zones, steep slopes, or designated river areas may be subject to special regulation under Federal or State statutes or rules, and interested persons should check with the Department for the latest information. Depiction of environmental features shall be for general information purposes only, and shall not be construed to define the legal geographic jurisdiction of such statutes or rules."

Areas located within the watershed of a Freshwater One (FW1) stream as classified in the Surface Water Quality Standards, and/or that have Class 1-A ground water (Ground Water of Special Ecological Significance), as classified in the Ground Water Quality Standards, are identified as "Non-degradation water areas based on the Surface Water Quality Standards at N.J.A.C. 7.9B, and/or the Ground Water Quality Standards at N.J.A.C. 7.9-6."

Non-degradation water areas shall be maintained in their natural state (as safe for poultry) and are subject to restrictions including, but not limited to, the following: (1) DGP will not approve any proposed discharge to ground water nor approve any human activity which results in a degradation of natural quality except for the upgrade or continued operation of existing facilities serving existing development.
For additional information please see the Surface Water Quality Standards at N.J.A.C. 7.9B, and/or the Ground Water Quality Standards at N.J.A.C. 7.9-6."

The Future Wastewater Service Area delineation for those municipalities that have been identified as Highlands Conforming Towns on this map are being developed through the Highlands Council's Plan Conformance process cooperatively between the Highlands Council and the municipality. These Future Wastewater Service Areas will be submitted separately as amendments to the Hunterdon County Future Wastewater Service Area when completed and so are not addressed herein.
Furthermore, compliance with the riparian zone standard has been demonstrated by the adoption of municipal Riparian Corridor Ordinances which have been updated to be in compliance with the Flood Hazard Control Act Rules (N.J.A.C. 7.26) and Water Quality Management Rules (N.J.A.C. 7.15). See municipal chapters for additional information.

The WQMP rule provides that any WMP previously approved by NJDEP may remain in force and effect until six (6) years from that approval date or until superseded by a subsequent WMP. In the County, the following previously approved WMPs are still considered current until six (6) years from the approval date as noted:
West Amwell Township (March 14, 2008)
Lambertville MUA (City of Lambertville and Stockton Borough) (February 7, 2012)

Existing Parcels Served are not shown for Municipalities with Adopted WMPs and for Municipalities that have petitioned for Conformance in the Highlands Region

Hunterdon County uses the following map projection and coordinate system when presenting GIS data:
Horizontal: North American Datum 1983 (NAD83)
Vertical: North American Vertical Datum 1987 (NAVD87)
Coordinate System: New Jersey State Plane Feet

Map Prepared by: Hunterdon County Planning Department

Data Sources:
Hunterdon County Division of GIS
New Jersey Department of Environmental Protection
Hunterdon County Planning Department

Legend

PROPOSED FUTURE SEWER SERVICE AREA

REFERENCE, FACILITY, NJPDES#

- 1, Albert Elias Residential Community Home, NJG0076422
- 2, Alexandria Twp BOE - Middle School, NJ0035670
- 3, Boy Scout Camp Treasure Island, NJG0154814
- 4, Buddie's Dinner, NJG0174785
- 5, Century Tube Corp, NJG0169382
- 6, Clinton Town WWTP, NJ0020389
- 7, Cooper Hill Country Club, NJG0074128
- 8, Copper Hill School, NJ0108332
- 9, Deer Path Family YMCA Branch, NJG0132454
- 10, Delaware Township MUA, NJ0027561
- 11, Delaware Valley Regional High School, NJG0173894
- 12, East Amwell TWP School, NJG0134317
- 13, Franklin Township Elementary School, NJG0072435
- 14, Frenchtown Boro STP, NJ0029831
- 15, Hunterdon County Fair Grounds, NJPDES permit revoked
- 16, Kingwood TWP School, NJG0023311
- 17, Lambertville Sewerage Authority, NJ0020915
- 18, Lester D. Wilson Elem School, NJ0027553
- 19, Magnesium Elektron INC, NJ0128911
- 20, Milford Sewer Utility, NJ0021890
- 21, Pine Creek Miniature Golf, NJG0161136
- 22, Rambling Pines Day Camp, NJG0141330
- 23, Raritan Township MUA STP, NJ0022047
- 24, Readington-Lebanon SA, NJ0098922
- 25, Ridge at Back Brook, NJ0139157
- 26, Route 12 Business Park LLC, NJ0145891
- 27, Salvation Army, Camp Tecumseh Wastewater Treatment Plant, NJ0023001
- 28, South Hunterdon Regional High School, NJG0131261
- 29, Stanton Properties, NJ0074802
- 30, The Pittstown Inn, NJG0140708
- 31, Uncle Scotts Steakhouse, NJG0174424
- 32, Valley View Health Care & Rehabilitation, NJG0184772
- 33, Verducci's Specialty Market, NJ0108294
- 34, Vianini Pipe Inc., NJ0032328
- 35, West Amwell Elementary School, NJG0134520
- 36, Whitehouse Plaza, NJG0142662

- Existing DSW (Discharge to Surface Water)
- Existing DGW (Discharge to Ground Water)

- Major Trunk Lines / Interceptors
- Pump Stations

□ SERVICE AREA OF WASTEWATER FACILITIES WITH PLANNING FLOWS LESS THAN 2,000 GPD WHICH DISCHARGE TO GROUND WATER

▨ Municipalities Conforming to Highlands RMP

- Parcel Boundaries
- Parcels Served Boundaries

- ▭ Water Quality Management Planning Areas Boundary
- ▭ County Boundary / Wastewater Management Planning Area
- ▭ Municipal Boundaries

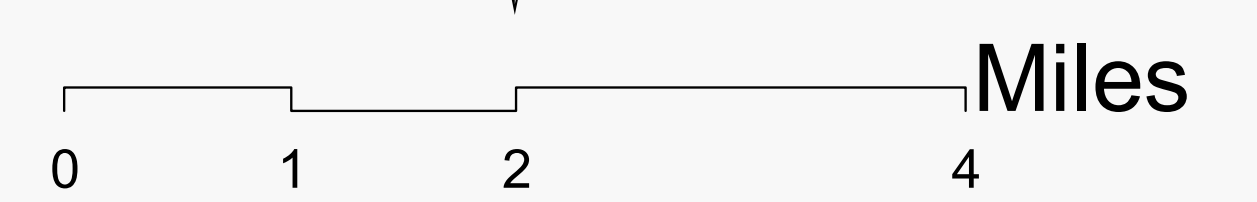
- ▭ Highlands Preservation Area
- ▭ Highlands Planning Area

▭ Streams and Surface Water

Major Roads

- Interstate Routes
- U.S. Routes
- State Routes
- County Roads

Scale

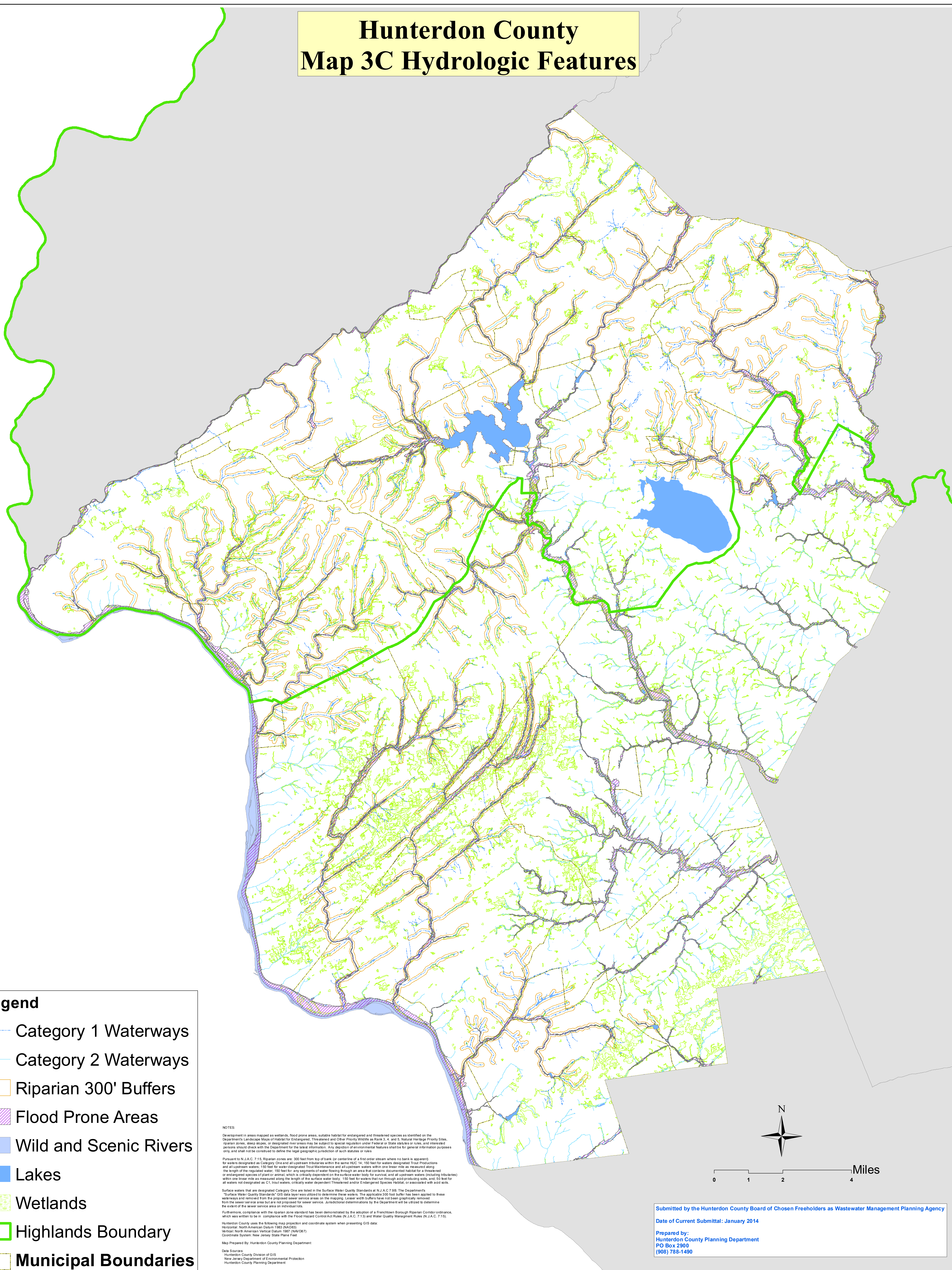


Submitted by the Hunterdon County Board of Chosen Freeholders as Wastewater Management Planning Agency
Date of Current Submittal: January 2014




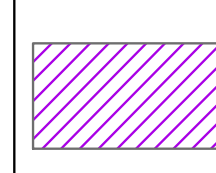


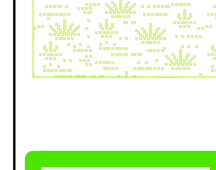
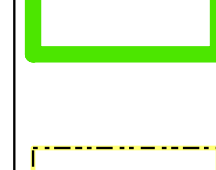

Prepared by:
Hunterdon County Planning Department
PO Box 2900
(908) 788-1490

Hunterdon County

Map 3C Hydrologic Features



Legend

-  Category 1 Waterways
-  Category 2 Waterways
-  Riparian 300' Buffers
-  Flood Prone Areas
-  Wild and Scenic Rivers
-  Lakes
-  Wetlands
-  Highlands Boundary
-  Municipal Boundaries

NOTES:

Development in areas mapped as wetlands, flood prone areas, suitable habitat for endangered and threatened species as identified on the Department's Landscape Maps of Habitat for Endangered, Threatened and Other Priority Wildlife as Rank 3, 4, and 5, Natural Heritage Priority Sites, riparian zones, steep slopes, or designated river areas may be subject to special regulations under Federal or State laws or rules, and interested persons should check with the Department for the latest information. Any decision of environmental features shall be for general information purposes only, and shall not be construed to define the legal geographic jurisdiction of such statutes or rules.

Pursuant to N.J.A.C. 7:15, Riparian zones are: 300 feet from top of bank (or centerline of a first order stream where no bank is apparent) for waters designated as Category One and all upstream tributaries within the same HUC 14; 150 feet for waters designated Trout Productions and all upstream waters; 150 feet for water designated Trout Maintenance and all upstream waters within one linear mile as measured along the length of the regulated water; 150 feet for any segments of water flowing through an area that contains documented habitat for a threatened or endangered species of plant or animal, which is critically dependent on the surface water body for survival, and all upstream waters (including tributaries) within one linear mile as measured along the length of the surface water body; 150 feet for waters that run through rip-producing soils; and, 50 feet for all waters not designated as C1, trout waters, critically water dependent Threatened and/or Endangered Species Habitat, or associated with add soils.

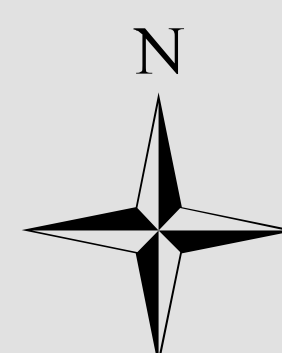
Surface waters that are designated Category One are listed in the Surface Water Quality Standards at N.J.A.C. 7:9B. The Department's "Surface Water Quality Standards" GIS data layer was utilized to determine these waters. The applicable 100 foot buffer has been applied to these waterways and removed from the proposed sewer service areas on the mapping. Lesser width buffers have not been graphically removed from the sewer service area but are not proposed for sewer service. Jurisdictional determinations by the Department will be utilized to determine the extent of the sewer service area on individual lots.

Furthermore, compliance with the riparian zone standard has been demonstrated by the adoption of a Frenchtown Borough Riparian Corridor ordinance, which was written to be in compliance with the Flood Hazard Control Act Rules (N.J.A.C. 7:13) and Water Quality Management Rules (N.J.A.C. 7:15).

Hunterdon County uses the following map projection and coordinate system when presenting GIS data:
 Horizontal: North American Datum 1983 (NAD83)
 Vertical: North American Vertical Datum 1985 (NAVD85)
 Coordinate System: New Jersey State Plane Feet

Map Prepared by: Hunterdon County Planning Department

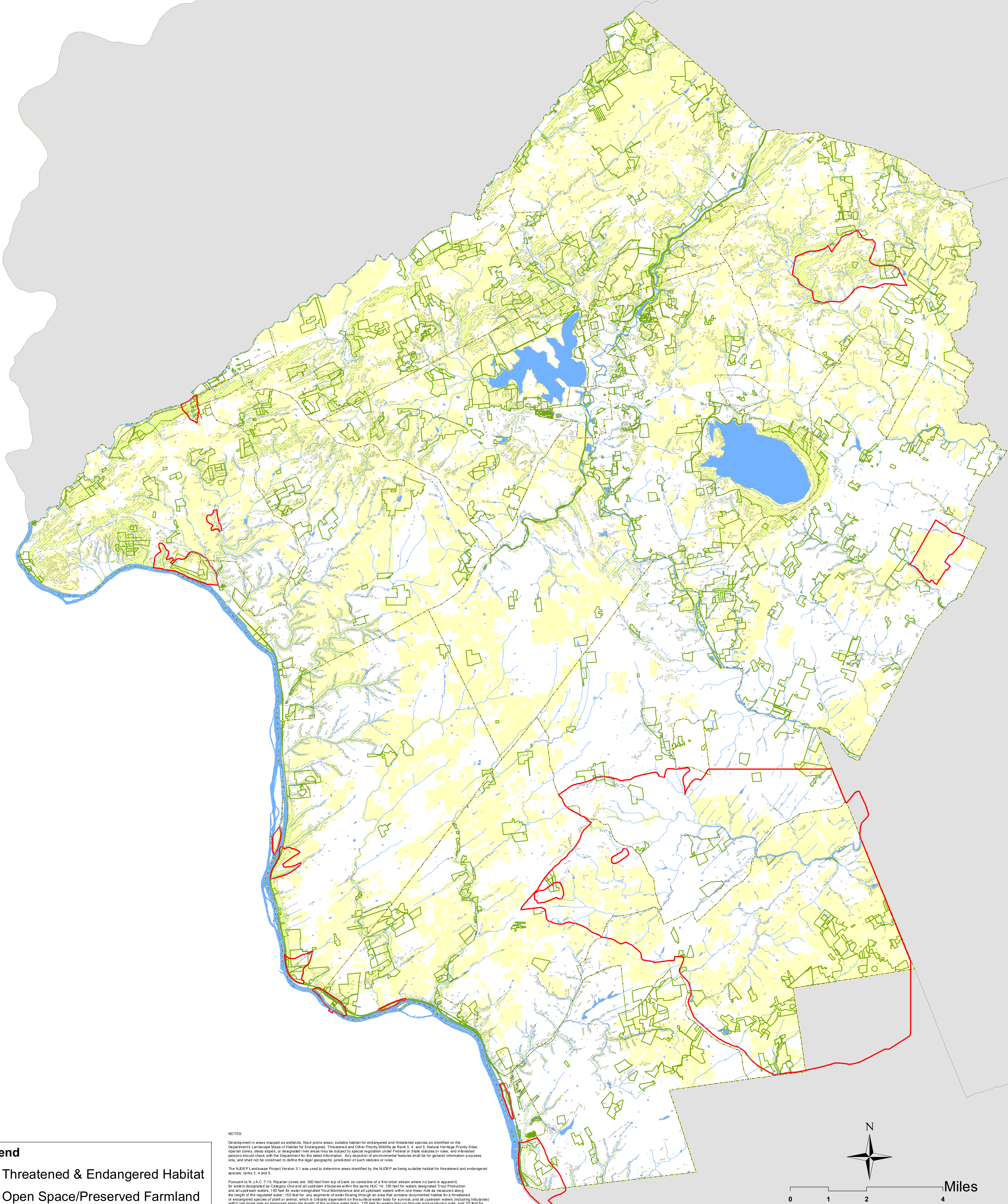
Data Sources:
 Hunterdon County Division of GIS
 New Jersey Department of Environmental Protection
 Hunterdon County Planning Department



0 1 2 4 Miles

Submitted by the Hunterdon County Board of Chosen Freeholders as Wastewater Management Planning Agency
 Date of Current Submittal: January 2014
 Prepared by:
 Hunterdon County Planning Department
 PO Box 2900
 (908) 788-1490

Hunterdon County Map 4C Natural Resources



- Legend**
- Threatened & Endangered Habitat
 - Open Space/Preserved Farmland
 - Natural Heritage Priority Sites
 - Steep Slopes > 20%
 - Streams and Surface Water
 - Municipal Boundaries

NOTES:

Development in areas mapped as wetlands, flood prone areas, suitable habitat for endangered and threatened species as identified on the Department's Landscape Maps of Habitat for Endangered, Threatened and Other Priority Wildlife as Rank 3, 4, and 5, Natural Heritage Priority Sites, riparian zones, steep slopes, or designated river areas may be subject to special regulation under Federal or State statutes or rules, and interested persons should check with the Department for the latest information. Any depiction of environmental features shall be for general information purposes only, and shall not be construed to define the legal geographic jurisdiction of such statutes or rules.

The NJDEP Landscape Project Version 3.1 was used to determine areas identified by the NJDEP as being suitable habitat for threatened and endangered species, ranks 3, 4 and 5.

Pursuant to N.J.A.C. 7-15, Riparian zones are: 300 feet from top of bank (or centerline of a first order stream where no bank is apparent) for waters designated as Category One and all upstream tributaries within the same HUC; 14, 150 feet for waters designated Trout Production and all upstream waters; 150 feet for waters designated Trout Maintenance and all upstream waters within one linear mile as measured along the length of the regulated water; 150 feet for any segments of water flowing through an area that contains documented habitat for a threatened or endangered species of plant or animal, which is critically dependent on the surface water body for survival, and all upstream waters (including tributaries) within one linear mile as measured along the length of the surface water body; 150 feet for waters that run through agricultural soils; and 50 feet for all waters not designated as C1, trout waters, critically water dependent Threatened and/or Endangered Species habitat, or associated with acid soils.

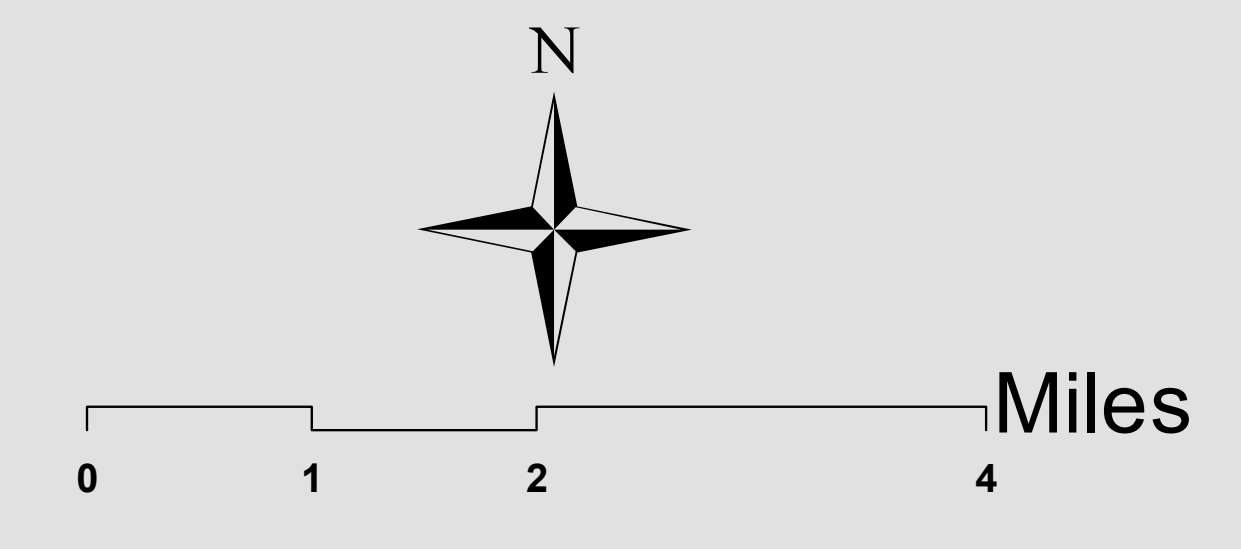
Surface waters that are designated Category One are listed in the Surface Water Quality Standards at N.J.A.C. 7-28. The Department's "Surface Water Quality Standards" GIS data layer was utilized to determine these waters. The applicable 300 foot buffer has been applied to these waterways and removed from the proposed sewer service areas on the mapping. Lesser width buffers have not been graphically removed from the sewer service area but are not proposed for sewer service. Additional determinations by the Department will be utilized to determine the extent of the sewer service area on individual lots.

Furthermore, compliance with the riparian zone standard has been demonstrated by the adoption of a Frenchtown Borough Riparian Corridor ordinance, which was written to be in compliance with the Flood Hazard Control Act Rules (N.J.A.C. 7-13) and Water Quality Management Rules (N.J.A.C. 7-15). Refer to the Frenchtown Borough municipal chapter for more details.

Hunterdon County uses the following map projection and coordinate system when presenting GIS data:
Horizontal: North American Datum 1983 (NAD83)
Vertical: North American Vertical Datum 1987 (NAVD87)
Coordinate System: New Jersey State Plane Feet

Map Prepared by: Hunterdon County Planning Department

Data Source:
Hunterdon County Division of GIS
New Jersey Department of Environmental Protection
Hunterdon County Planning Department



Submitted by the Hunterdon County Board of Chosen Freeholders as Wastewater Management Planning Agency
Date of Current Submittal: January 2014

Prepared by:
Hunterdon County Planning Department
PO Box 2900
(908) 788-1490