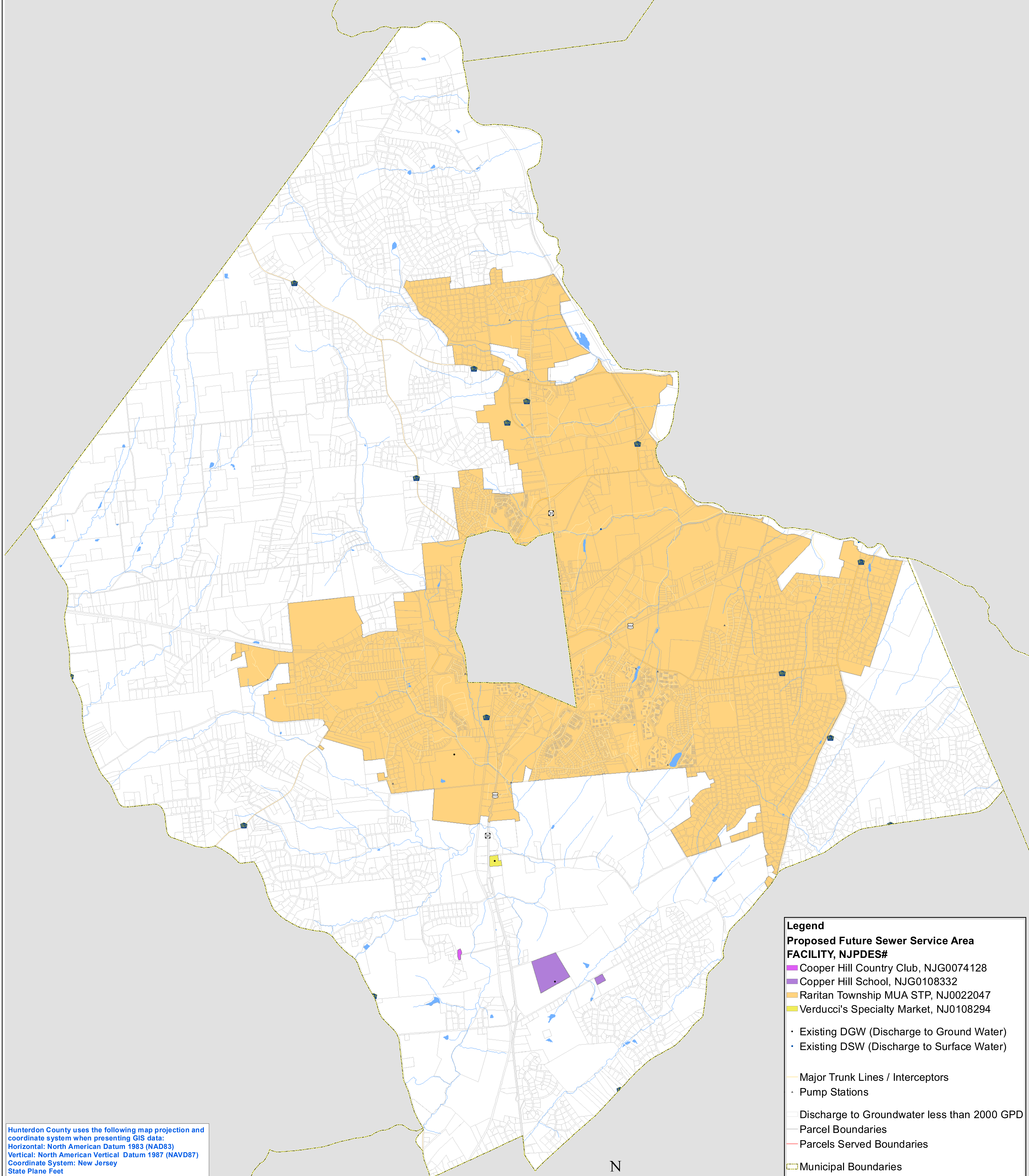


Raritan Township Future Wastewater Service Area Map



Legend

Proposed Future Sewer Service Area
FACILITY, NJPDES#

- Cooper Hill Country Club, NJG0074128
- Copper Hill School, NJG0108332
- Raritan Township MUA STP, NJ022047
- Verducci's Specialty Market, NJ0108294

- Existing DGW (Discharge to Ground Water)
- Existing DSW (Discharge to Surface Water)

- Major Trunk Lines / Interceptors
- Pump Stations
- Discharge to Groundwater less than 2000 GPD
- Parcel Boundaries
- Parcels Served Boundaries

- Municipal Boundaries
- Streams and Surface Water

Major Roads

- Interstate Routes
- U.S. Routes
- State Routes
- County Roads

Hunterdon County uses the following map projection and coordinate system when presenting GIS data:
Horizontal: North American Datum 1983 (NAD83)
Vertical: North American Vertical Datum 1987 (NAVD87)
Coordinate System: New Jersey State Plane Feet

Source: Hunterdon County Planning Board

Prepared by:
Hunterdon County Planning Department
PO Box 2900
(908) 788-1490

Date of Original Submittal: July 2012
Date of Revised Submittal: August 2013

0 0.5 1 2 Miles