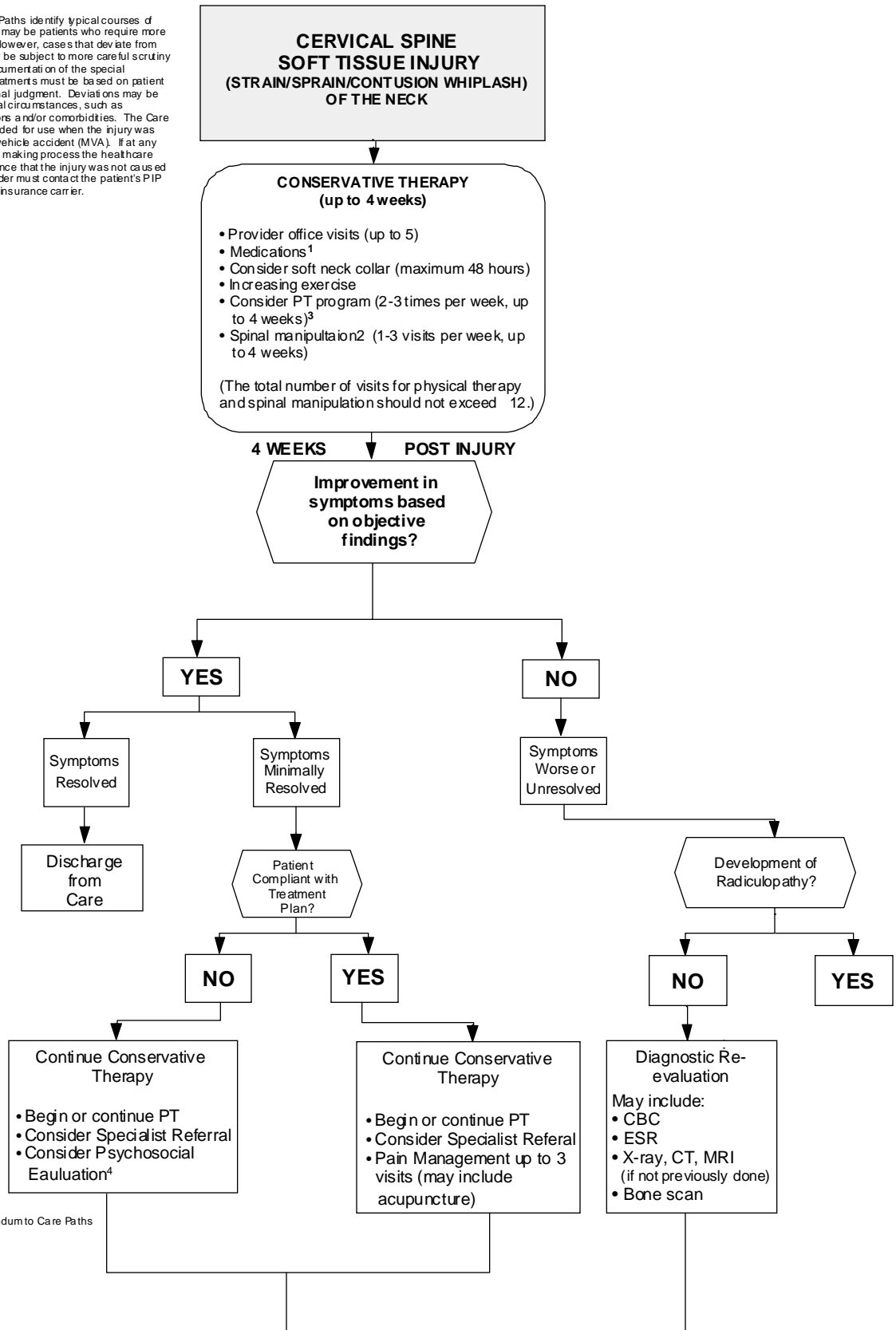


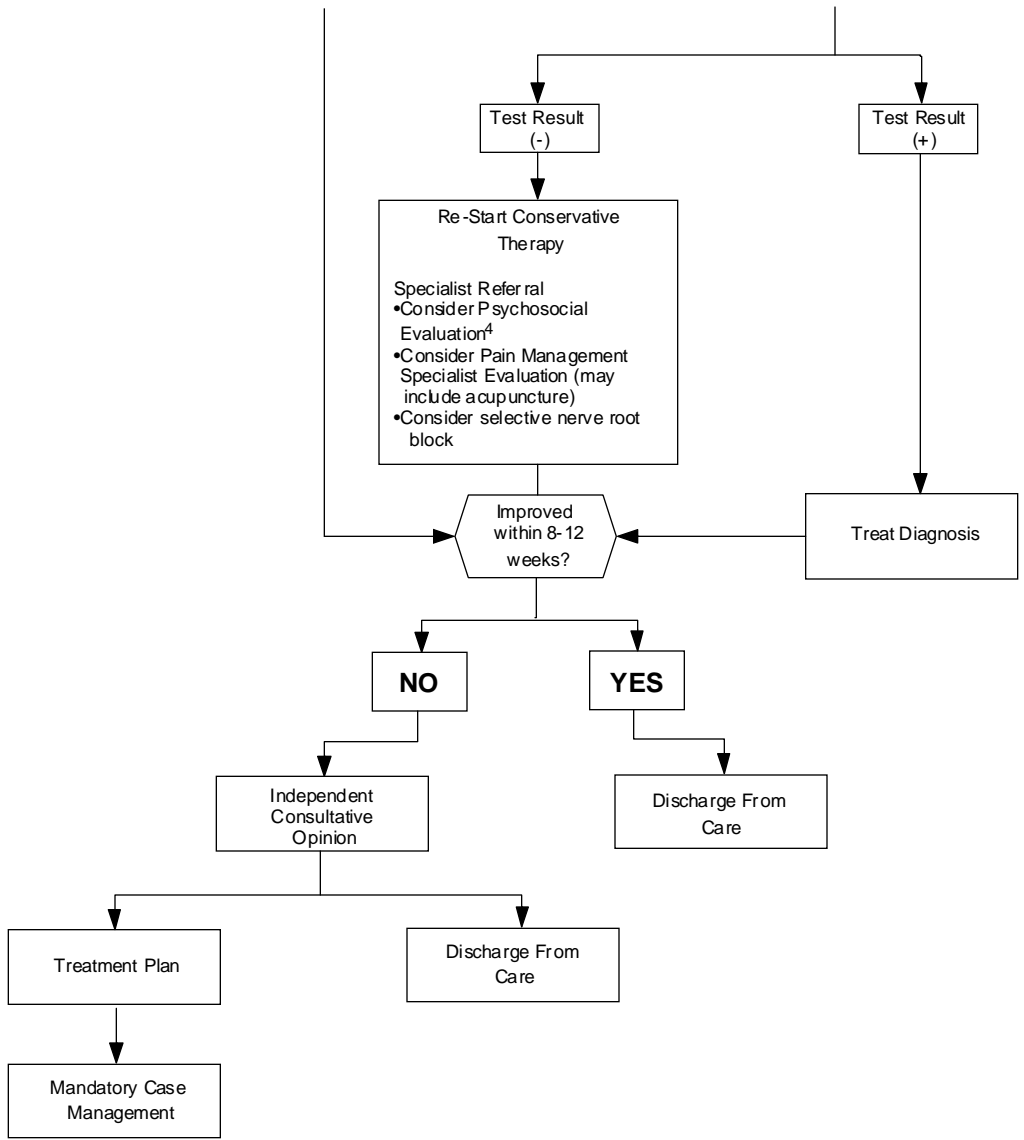
### EXHIBIT 3

#### CARE PATH 1

NOTE: These Care Paths identify typical courses of intervention. There may be patients who require more or less treatment. However, cases that deviate from the Care Paths may be subject to more careful scrutiny and may require documentation of the special circumstances. Treatments must be based on patient need and professional judgment. Deviations may be justified by individual circumstances, such as pre-existing conditions and/or comorbidities. The Care Paths are only intended for use when the injury was caused by a motor vehicle accident (MVA). If at any point in the decision making process the healthcare provider finds evidence that the injury was not caused by a MVA, the provider must contact the patient's PIP carrier and medical insurance carrier.



1, 2, 3, 4 See Addendum to Care Paths



ICD-9 CODES

- 728.0
- 728.85
- 739.0
- 739.1
- 847.0
- 847.9
- 922.3
- 922.31
- 953.0

<sup>4</sup> See Addendum to Care Paths

CARE PATH 1