



Schuylkill River Restoration Fund

Success through Partnership

Program creation

- **Relationship between Delaware River Basin Commission and Exelon Corp. established in 2005 with Docket No. D-69-210 CP**
- **Schuylkill River Heritage Area brought in for grant administration and project management**
- **Program designed to**
 - “to undertake implementation projects that will improve the quality and quantity of water in the Schuylkill River and its tributaries. The goal of the Schuylkill River Restoration Program is to fund projects in the Schuylkill River Basin that are consistent with restoration and water management goals for the Schuylkill River.”*
- **First contribution of \$158,000 made by Exelon in January of 2006**

Partnerships

Advisory Committee developed

- **Exelon**
- **Delaware River Basin Commission**
- **SRHA**
- **Philadelphia Water Department**
- **EPA Region III**
- **PA D.E.P**
- **Schuylkill Action Network**
- **Partnership for the Delaware Estuary**

Base Criteria for Projects

- **The project's ability to improve the quality and quantity of water in the Schuylkill River;**
- **The project exhibits high standards of planning and design, including implementation of Best Management Practices;**
- **The project is consistent with local, state, federal, or other plans;**
- **The project is positioned for implementation with little or no additional planning;**
- **The project is single-phased or in the final phase of implementation;**
- **The project will require minimal monitoring following completion to demonstrate positive environmental effects;**
- **The project will effectively leverage the resources of two or more partners, including a sponsoring partner with sufficient capacity to manage the project following completion or will utilize volunteers;**

Program Growth

- **2010, Philadelphia Water Department - \$100,000**
- **2011, The Partnership for the Delaware Estuary - \$10,000**
- **Guidelines expanded for Land Transaction Assistance funding**
- **Ongoing fundraising efforts to expand the efforts of the program**

Program Funding

Total Program Funding through 2012

| | |
|--|--------------------|
| ▪ Exelon Nuclear | \$ 1.3 mil+ |
| ▪ Philadelphia Water Department | \$ 300,000 |
| ▪ Partnership for the Delaware Estuary | \$ 12,000 |
| TOTAL FUNDING | \$1,622,526 |

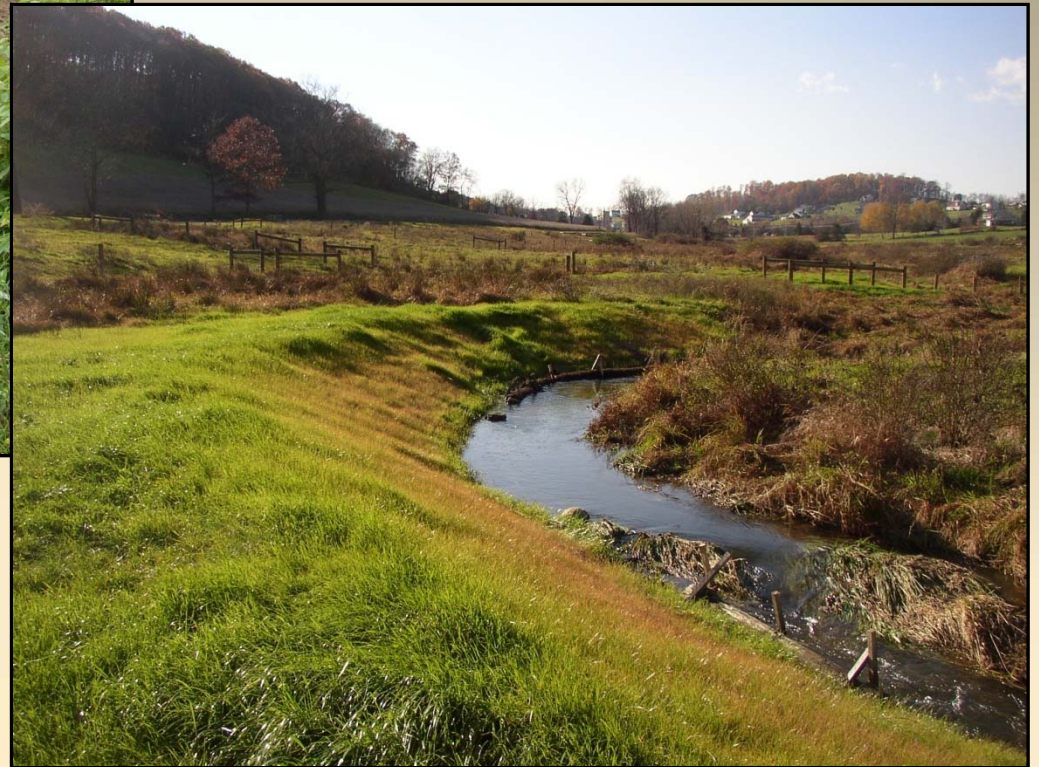
Total Leverage

- \$777,447 on completed projects
- \$873,105 leveraged through project match

Project Stats

- **32 projects have been funded. 15 have been completed.**
- **5 Stormwater Basins have been retrofitted**
- **5 projects completed addressing Abandoned Mine Drainage (AMD)**
- **Over 6,000 feet of protected stream**
- **Over 10,000 feet of streambank fencing installed**
- **Over 1,200 native trees and shrubs planted**

Berks County – Harold Adams Farm



Montgomery County – Unami Creek

Headwaters



Berks County - Deb Wolfe Farm



Upper Dublin - Aiden Lair Park



Berks County – Guntz Farm



Berks County – Guntz Farm



Schuylkill County – Wheeler Flume,

Pine Knot



Schuylkill County – Wheeler Flume,

Pine Knot



Reevesdale Mine Discharge – Schuylkill

County



Reevesdale South Dip Tunnel



Albert M. Greenfield School, Philadelphia

