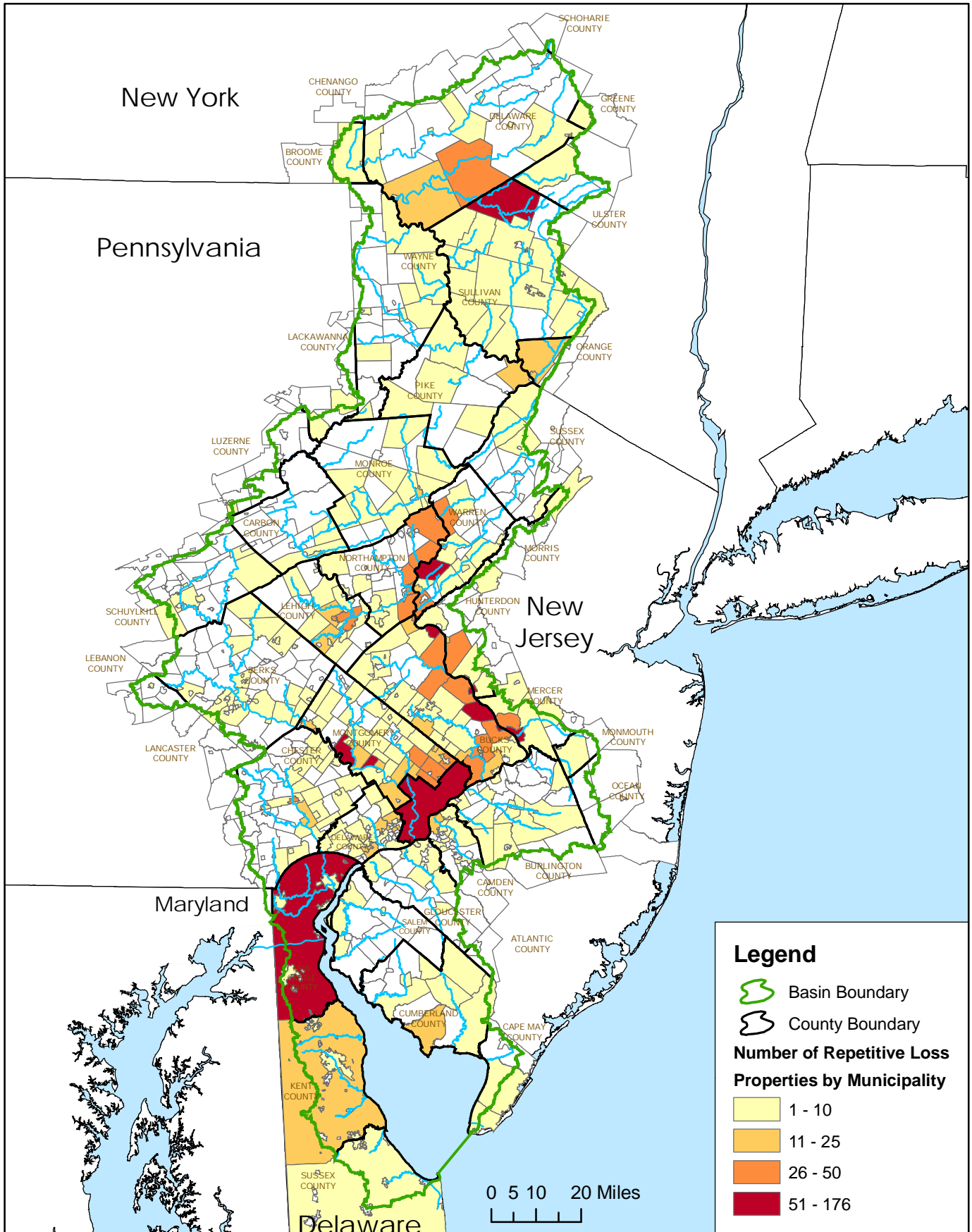


# Repetitive Loss Properties in the Delaware River Basin



Source: Federal Emergency Management Agency (FEMA). A property is considered a repetitive loss property when there are 2 or more losses reported which were paid more than \$1,000 for each loss. The 2 losses must be within 10 years of each other and be at least 10 days apart. Losses from 01/01/1978 - 02/28/07 that are closed are considered.

Prepared by Delaware River Basin Commission Staff, April 2007.