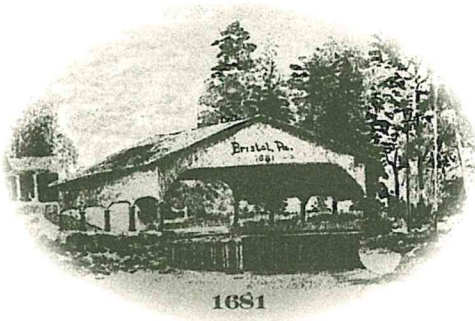


HISTORIC BRISTOL BOROUGH

250 Pond Street, Bristol, PA 19007
Tel: 215-788-3828 • Fax: 215-788-5366
Website: www.bristolborough.com



June 5, 2018

The Honorable Daryl D. Metcalfe
Chairman-State Government Committee
Pennsylvania House of Representatives
144 Main Capitol Building
PO Box 202012
Harrisburg, PA 17120

Dear Chairman Metcalfe and Committee Members:

Settled in 1681, Bristol Borough is the third oldest town in Pennsylvania. Its prime location enabled the Borough to flourish as a busy port and industrial town in the 1800s. Later, shipyards boomed and during World War II, the shipyards were converted to manufacturing of aircraft. The neighborhoods of elegant Victorian homes stand as reminder of Bristol Borough's robust industrial past.

It has been said that Bristol Borough is "defined by historic periods of boom, bust, and rebirth," much of which can be attributed to its fortunate geographic location along the Delaware River. Today, Bristol Borough finds itself in a period of rebirth, however, that has not always been the case. During the 19th and 20th century pollution in portions of the tidal Delaware had reached a critical state. The river was being used as an open sewer. The foul river's foul odor would overwhelm and sicken people nearby. Waterborne illnesses were on the increase while migratory fish populations were on the decline.

A turning point for the Delaware River and consequently, Bristol Borough, occurred in 1961 when President Kennedy and the governors of Delaware, New Jersey, Pennsylvania, and New York signed the compact legislation into law creating the Delaware River Basin Commission - a regional body with the force of law to oversee a unified approach to managing a river system without regard to political boundaries.

Over the course of many years, it is evident, the successful water resources management programs adopted and implemented by the Delaware River Basin Commission have been critical in reducing pollution levels in the river which have led to a resurgence of economic vitality along the waterfront in riverfront communities like Bristol Borough.

In April of 2012, the Delaware Valley Regional Planning Commission released its regional study of the tidal portion of Pennsylvania's Delaware River waterfront, 'Accessing the Tidal Delaware: Pennsylvania'. The study identified 17 priority areas of opportunity that have been gaps along the river where access to the waterfront had not been addressed, including Bristol Borough. The

study highlighted Bristol Borough as a boating destination. Bristol Riverfront Park and the Delaware Canal State Park are considered tourism, recreation and/or historic points of interest, with their adjacent features, the Bristol Marsh Nature Preserve and the Bristol Lagoon, as environmental points of interest.

Last year Bristol Borough cut the ribbon for newly built transient day-docks on the Bristol Riverfront. The project was supported by federal, state and local government entities. It is anticipated the docks will generate about \$780,000 in annual economic impact. The positive effects have been nearly immediate. Last year Bristol Borough earned the distinction as the “Small Business Revolution’s Small Town, 2017.” This year the Bristol Business Association has launched First Fridays on the Delaware.

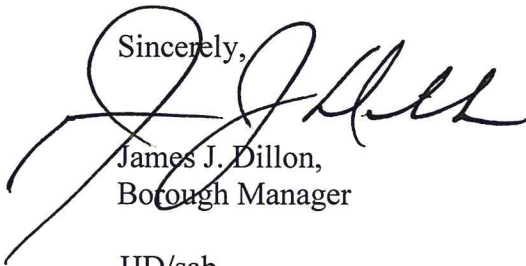
Bristol Borough’s recent success story would not be possible without the Delaware River Basin Commission’s efforts to clean up the polluted waters of this nationally significant and locally regarded treasure, the Delaware River.

These improvements, as well as other DRBC accomplishments, over the past fifty years are rooted in the Delaware River Basin Compact: ***that the waters and related resources of the basin are regional assets vested with local, state, and national interests that all share joint responsibility to maintain and protect.***

It is the intention of Bristol Borough, by submitting this letter, to impress upon the State Government Committee of the Pennsylvania House of Representatives, that the programs of the Delaware River Basin Commission have been beneficial to our community.

Thank you for your consideration.

Sincerely,

A handwritten signature in black ink, appearing to read "J. Dillon", written over the typed name and title.

James J. Dillon,
Borough Manager

JJD/sab

cc: File Copy