



# DRBC's Interactive Mapping Webpage

## *Commissioner Update*

David A. Sayers  
Supervisor, IT and Water Use Section

December 4, 2013



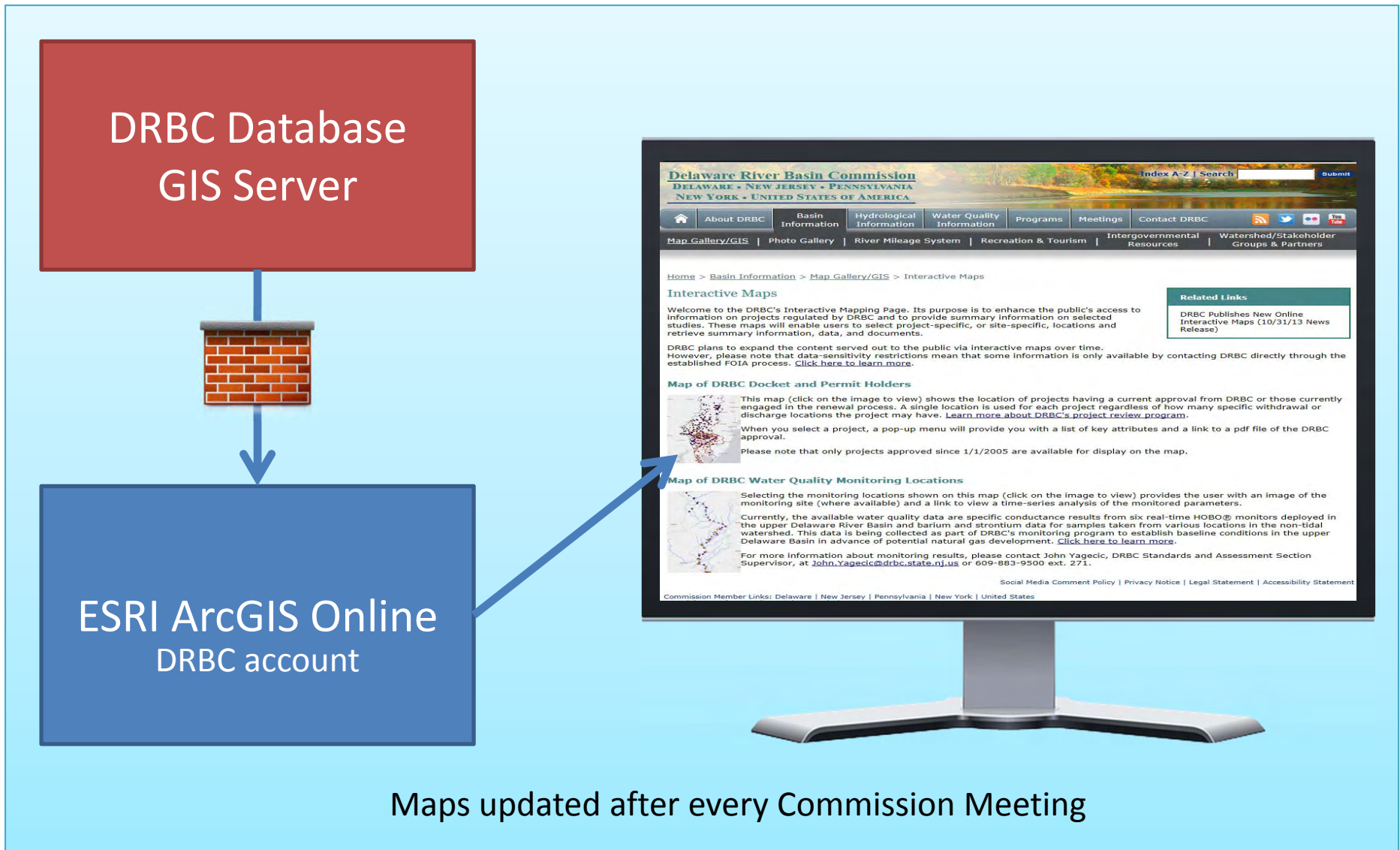
# Overview

**Goal:** Make data more accessible to the public

- **2011:** “Web Portal” originally in Scope of Work for IT Upgrades Project
- **2012:** New technology available: **ESRI ArcGIS Online**  
DRBC staff evaluation / free trial
- **2013:** Purchased ESRI Subscription.  
Cost effective: (~25% of original 10yr costs)  
Staff expertise used to update / add maps
- **Oct 2013:** Interactive Mapping Webpage went live on DRBC website

# Interactive Mapping Webpage

## Infrastructure Overview



Maps updated after every Commission Meeting

# **DRBC's Interactive Mapping Webpage: Demo**

Begin Demo

# Delaware River Basin Commission

DELAWARE • NEW JERSEY • PENNSYLVANIA  
NEW YORK • UNITED STATES OF AMERICA

Index A-Z | Search |  Submit

- [Home](#)
- [About DRBC](#)
- [Basin Information](#)
- [Hydrological Information](#)
- [Water Quality Information](#)
- [Programs](#)
- [Meetings](#)
- [Contact DRBC](#)



*"A river is more than an amenity,  
it is a treasure."*

(U.S. Supreme Court Justice Oliver Wendell Holmes,  
1931 Delaware River Diversion Case)

## IN THE SPOTLIGHT

- [DRBC Completes Lower Delaware River Mussel Survey](#)
- [Flood Advisory Committee Meets in Easton - Focus Group Study Round 2 Seeks Participants](#)
- [Preliminary Flood Maps/Coastal Analysis Available for Cape May, Cumberland & Salem Counties \(Link to FEMA\)](#)

[More](#)

## NEWS BYTES

- [DRBC Participates in Schuylkill Action Network's Annual Meeting](#)
- [Remembering President Kennedy](#)
- [AWRA to Hold Webinars on Newly Published Flood & Drought Management Report](#)

[More](#)

## RECENT POSTINGS

- [Next DRBC Public Hearing/Business Meeting: December 3-4, 2013](#)
- [DRBC Publishes New Online Interactive Maps](#)
- [Most Recent Notice of Applications Received \(NAR\)](#)
- [Most Recent Wadesville Demonstration Project Information](#)
- [Bacterial Data from Delaware Estuary Boat Run Monitoring Program](#)
- [Most Recent Project Review Application Status Page](#)

[More](#)

[AHPS River Rise Forecasts & Other River Conditions Info](#)

[Application & Reporting Forms](#)

[DRB NYC Reservoir Storage](#)

[DRB Select Flow & Storage Data](#)

["Ed. Web" Education Page](#)

[Interactive Maps](#)

[Map Gallery](#)

[Natural Gas Drilling](#)

[Newsroom](#)

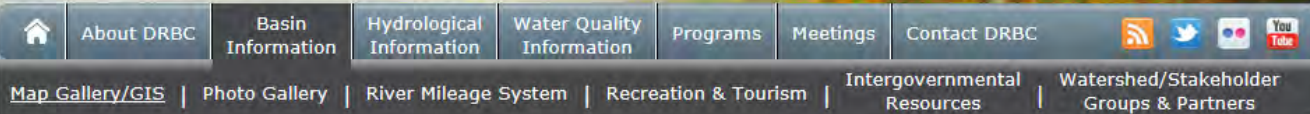
[Photo Gallery](#)

[Social Media Comment Policy](#) | [Privacy Notice](#) | [Legal Statement](#) | [Accessibility Statement](#)

Commission Member Links: Delaware | New Jersey | Pennsylvania | New York | United States  
Copyright © Delaware River Basin Commission, 1996-2014  
P.O. Box 7360, West Trenton, NJ 08628-0360  
Phone (609)883-9500; Fax (609)883-9522  
Thanks to NJ for hosting the DRBC website

## Delaware River Basin Commission

DELAWARE • NEW JERSEY • PENNSYLVANIA  
NEW YORK • UNITED STATES OF AMERICA

 Index A-Z | Search  


[Home](#) > [Basin Information](#) > [Map Gallery/GIS](#) > Interactive Maps

### Interactive Maps

Welcome to the DRBC's Interactive Mapping Page. Its purpose is to enhance the public's access to information on projects regulated by DRBC and to provide summary information on selected studies. These maps will enable users to select project-specific, or site-specific, locations and retrieve summary information, data, and documents.

DRBC plans to expand the content served out to the public via interactive maps over time. However, please note that data-sensitivity restrictions mean that some information is only available by contacting DRBC directly through the established FOIA process. [Click here to learn more.](#)

#### Related Links

DRBC Publishes New Online Interactive Maps (10/31/13 News Release)

#### Map of DRBC Docket and Permit Holders



This map (click on the image to view) shows the location of projects having a current approval from DRBC or those currently engaged in the renewal process. A single location is used for each project regardless of how many specific withdrawal or discharge locations the project may have. [Learn more about DRBC's project review program.](#)

When you select a project, a pop-up menu will provide you with a list of key attributes and a link to a pdf file of the DRBC approval.

Please note that only projects approved since 1/1/2005 are available for display on the map.

#### Map of DRBC Water Quality Monitoring Locations



Selecting the monitoring locations shown on this map (click on the image to view) provides the user with an image of the monitoring site (where available) and a link to view a time-series analysis of the monitored parameters.

Currently, the available water quality data are specific conductance results from six real-time HOB0® monitors deployed in the upper Delaware River Basin and barium and strontium data for samples taken from various locations in the non-tidal watershed. This data is being collected as part of DRBC's monitoring program to establish baseline conditions in the upper Delaware Basin in advance of potential natural gas development. [Click here to learn more.](#)

For more information about monitoring results, please contact John Yagecic, DRBC Standards and Assessment Section Supervisor, at [John.Yagecic@drbc.state.nj.us](mailto:John.Yagecic@drbc.state.nj.us) or 609-883-9500 ext. 271.

[Social Media Comment Policy](#) | [Privacy Notice](#) | [Legal Statement](#) | [Accessibility Statement](#)

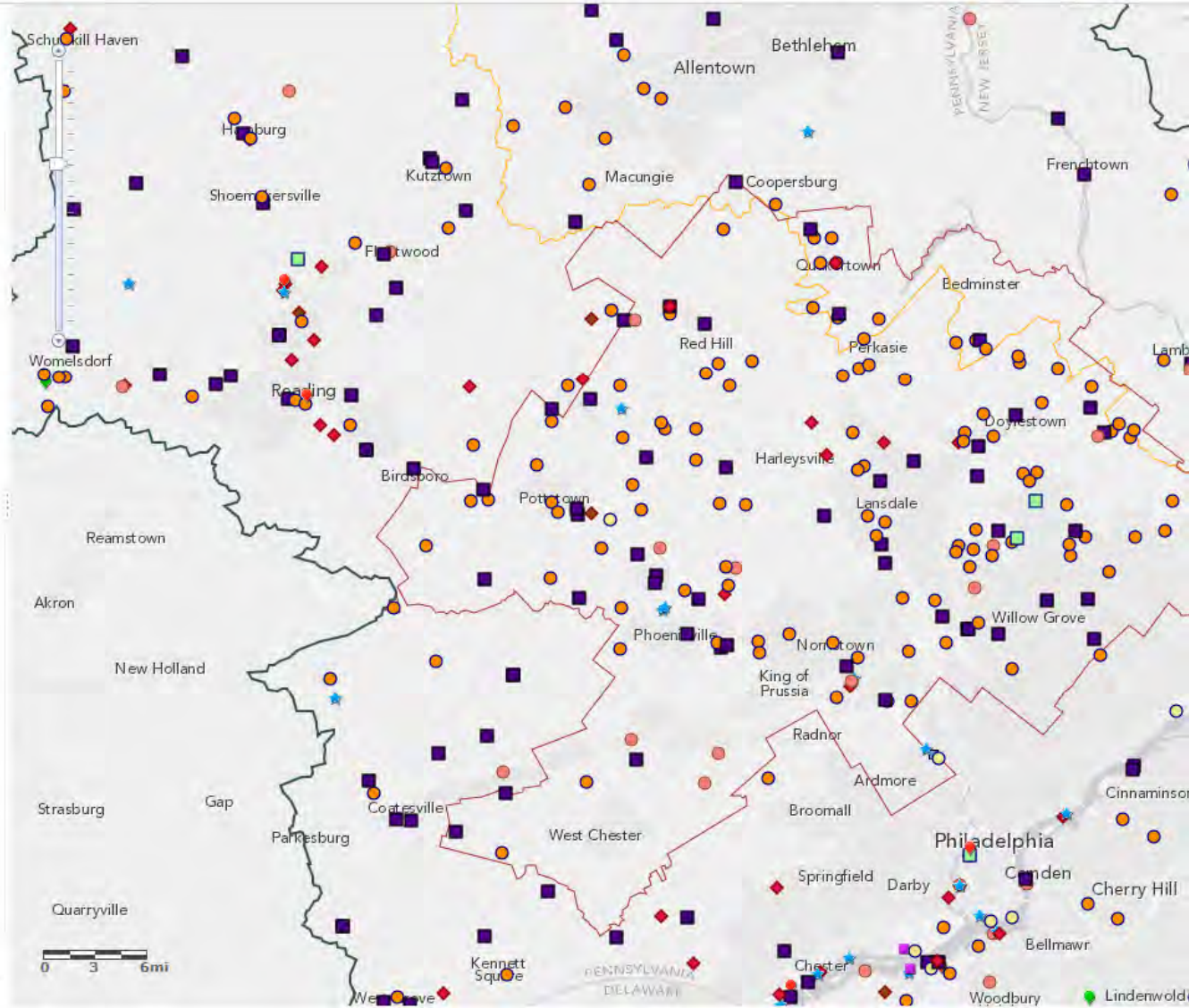
# HOME - DRBC Approved Docket Map

Details Add Basemap Save Share Print Measure

About Content Legend

## Legend

- Dockets**
  - Other
  - Dam/Reservoir
  - Groundwater Withdrawal
  - Groundwater and Surface Water Withdrawal
  - Interconnection
  - Industrial Waste Water Treatment Plant
  - Industrial Waste Water Treatment Plant and Groundwater Withdrawal
  - Floodplain
  - Pipeline
  - Power
  - Spring
  - Surface Water Withdrawal
  - Waste Water Treatment Plant
  - Waste Water Treatment Plant and Surface Water Withdrawal
- 
- DRB Boundary**
  - SE PA GWPA
  - SPW



# HOME - DRBC Approved Docket Map

Details Add Basemap

Save Share Print

About Content Legend

## Legend

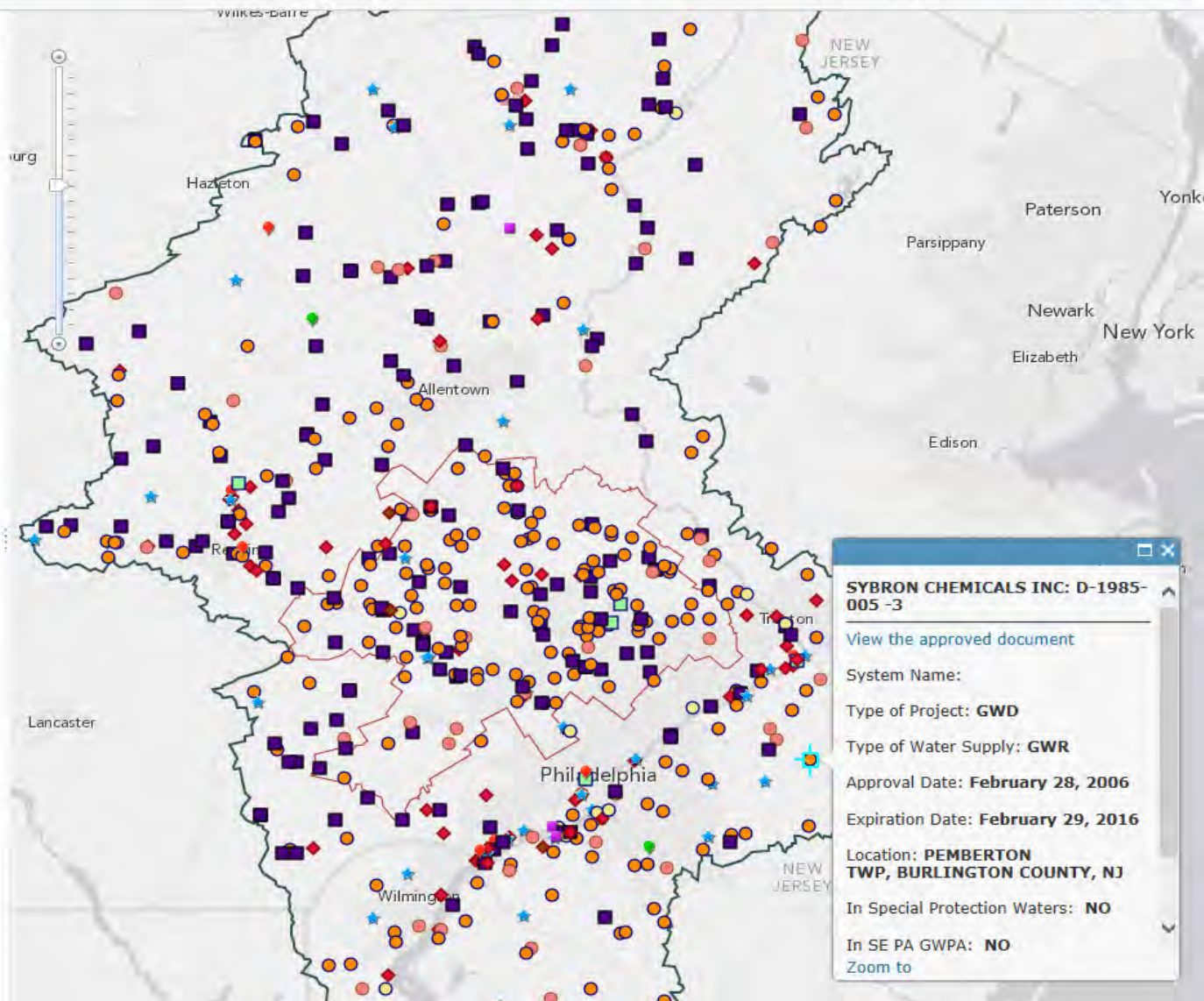
### Dockets

- Other
- Dam/Reservoir
- Groundwater Withdrawal
- Groundwater and Surface Water Withdrawal
- Interconnection
- Industrial Waste Water Treatment Plant
- Industrial Waste Water Treatment Plant and Groundwater Withdrawal
- Floodplain
- Pipeline
- Power
- Spring
- Surface Water Withdrawal
- Waste Water Treatment Plant
- Waste Water Treatment Plant and Surface Water Withdrawal

### DRB Boundary



### SE PA GWPA



**SYBRON CHEMICALS INC: D-1985-005 -3**

[View the approved document](#)

System Name:

Type of Project: **GWD**

Type of Water Supply: **GWR**

Approval Date: **February 28, 2006**

Expiration Date: **February 29, 2016**

Location: **PEMBERTON TWP, BURLINGTON COUNTY, NJ**

In Special Protection Waters: **NO**

In SE PA GWPA: **NO**

Zoom to



# HOME - DRBC Approved Docket Map

Details Add Basemap Save Share Print Measure Bookmarks Find address

About Content Legend

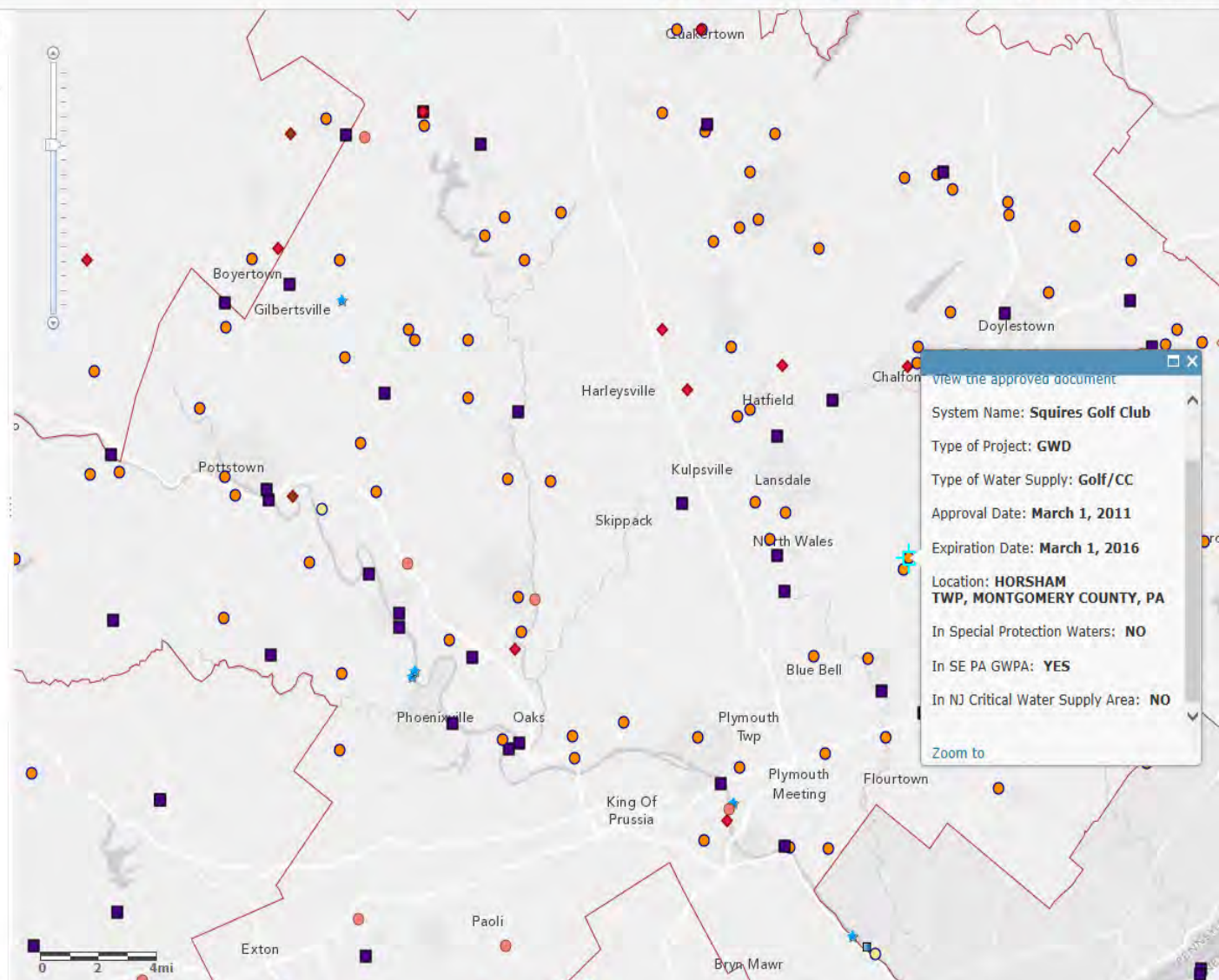
### Legend

**Dockets**

- Other
- Dam/Reservoir
- Groundwater Withdrawal
- Groundwater and Surface Water Withdrawal
- Interconnection
- Industrial Waste Water Treatment Plant
- Industrial Waste Water Treatment Plant and Groundwater Withdrawal
- Floodplain
- Pipeline
- Power
- Spring
- Surface Water Withdrawal
- Waste Water Treatment Plant
- Waste Water Treatment Plant and Surface Water Withdrawal

**DRB Boundary**

**SE PA GWPA**



view the approved document

System Name: **Squires Golf Club**

Type of Project: **GWD**

Type of Water Supply: **Golf/CC**

Approval Date: **March 1, 2011**

Expiration Date: **March 1, 2016**

Location: **HORSHAM TWP, MONTGOMERY COUNTY, PA**

In Special Protection Waters: **NO**

In SE PA GWPA: **YES**

In NJ Critical Water Supply Area: **NO**

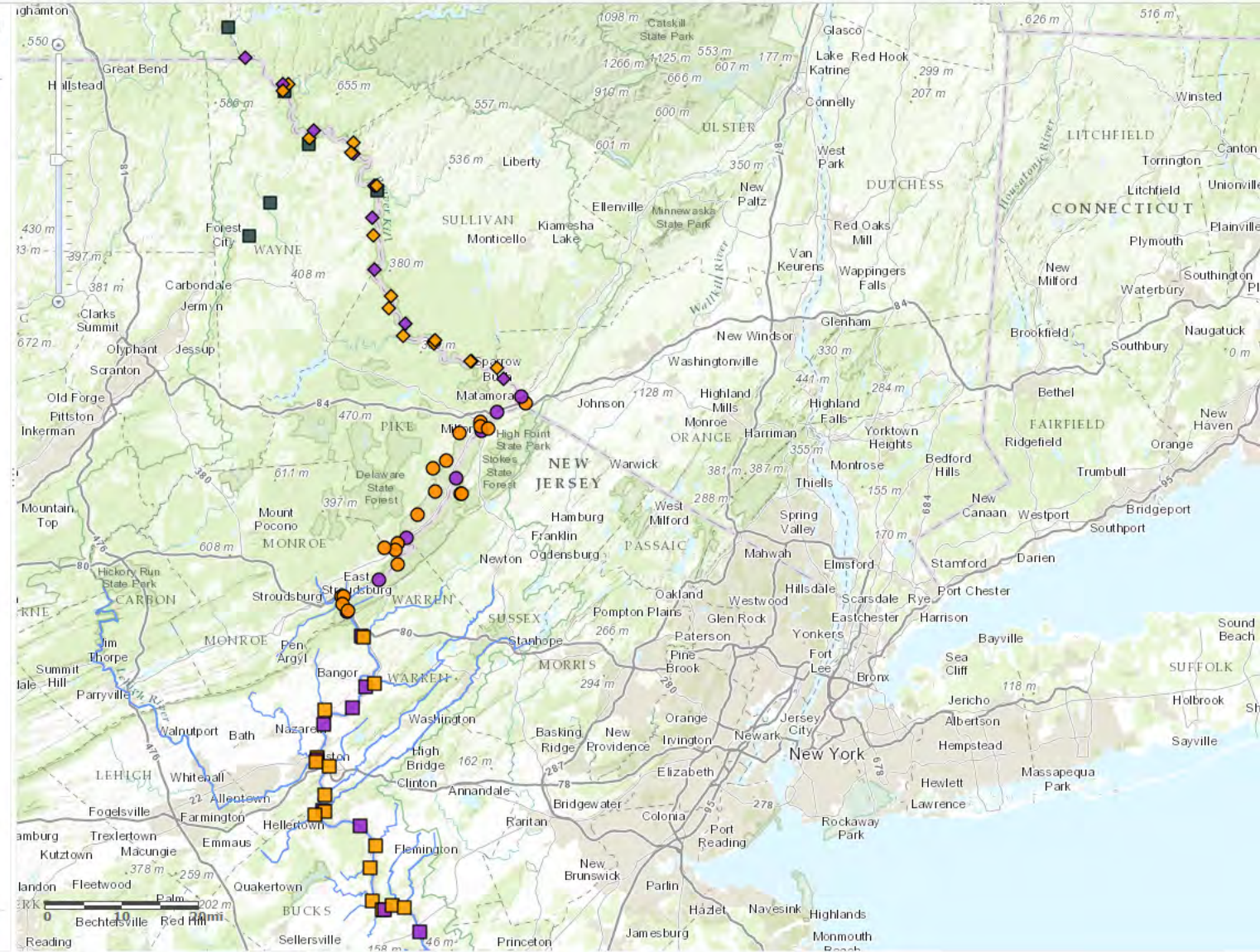
Zoom to

# DRBC Water Quality Map

Details Add Basemap Save Share Print Measure

About Content Legend

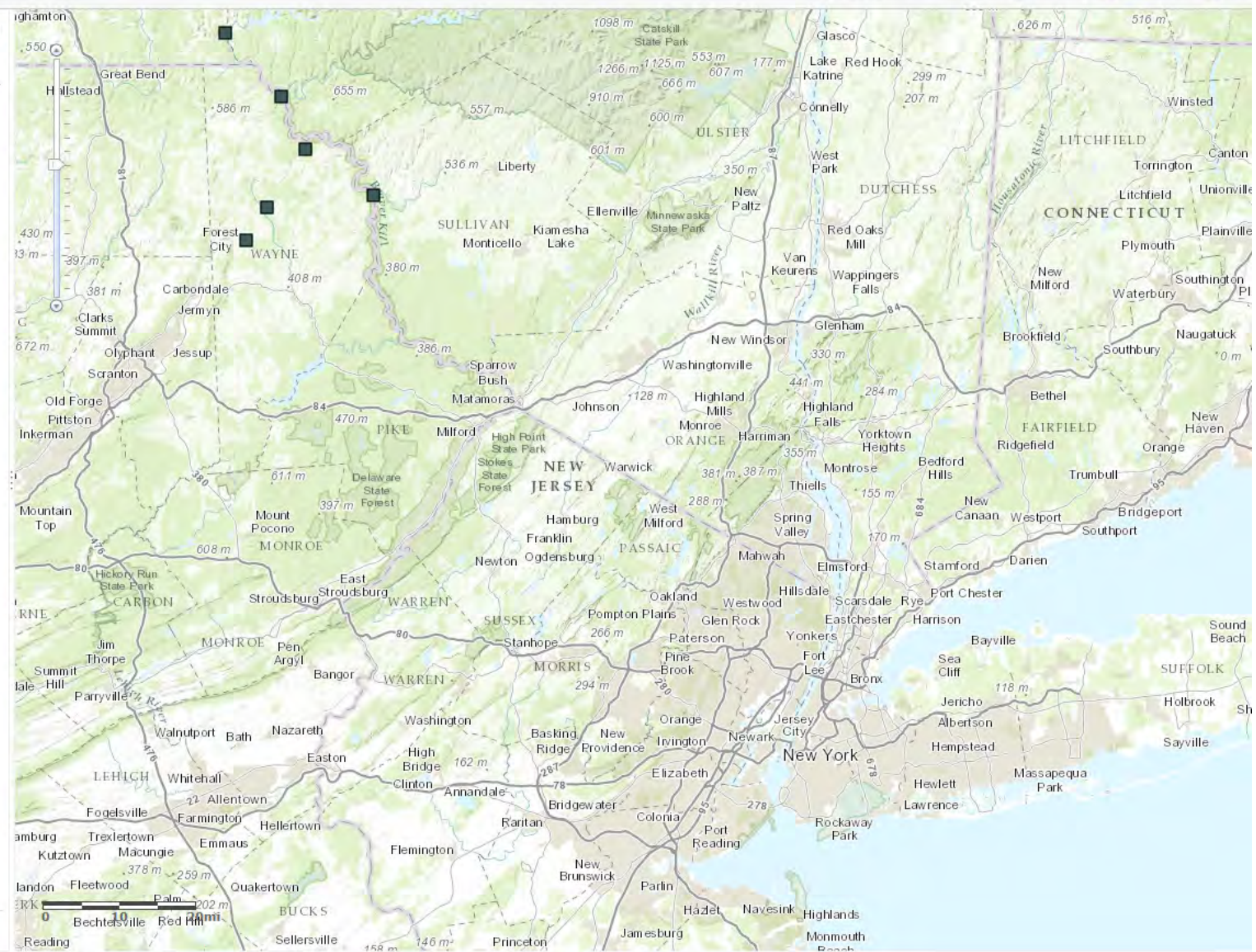
- hobotext
- BndCtrText
- DRBC Boundary Control Points
- DRBC HOBO Monitoring Sites
- Water Quality Streams
- DRB Boundary
- Topographic



# HOME DRBC Water Quality Map

Details Add Basemap Save Share Print Measure

- About Content Legend
- ### Contents
- hobotext
  - BndCtrText
  - DRBC Boundary Control Points
  - DRBC HOBO Monitoring Sites
  - Water Quality Streams
  - DRB Boundary
  - Topographic



# ArcGIS - DRBC Water Quality Map

Details Add Basemap

Save Share Print Measure Bookmarks Find address or place

About Content Legend

## Legend

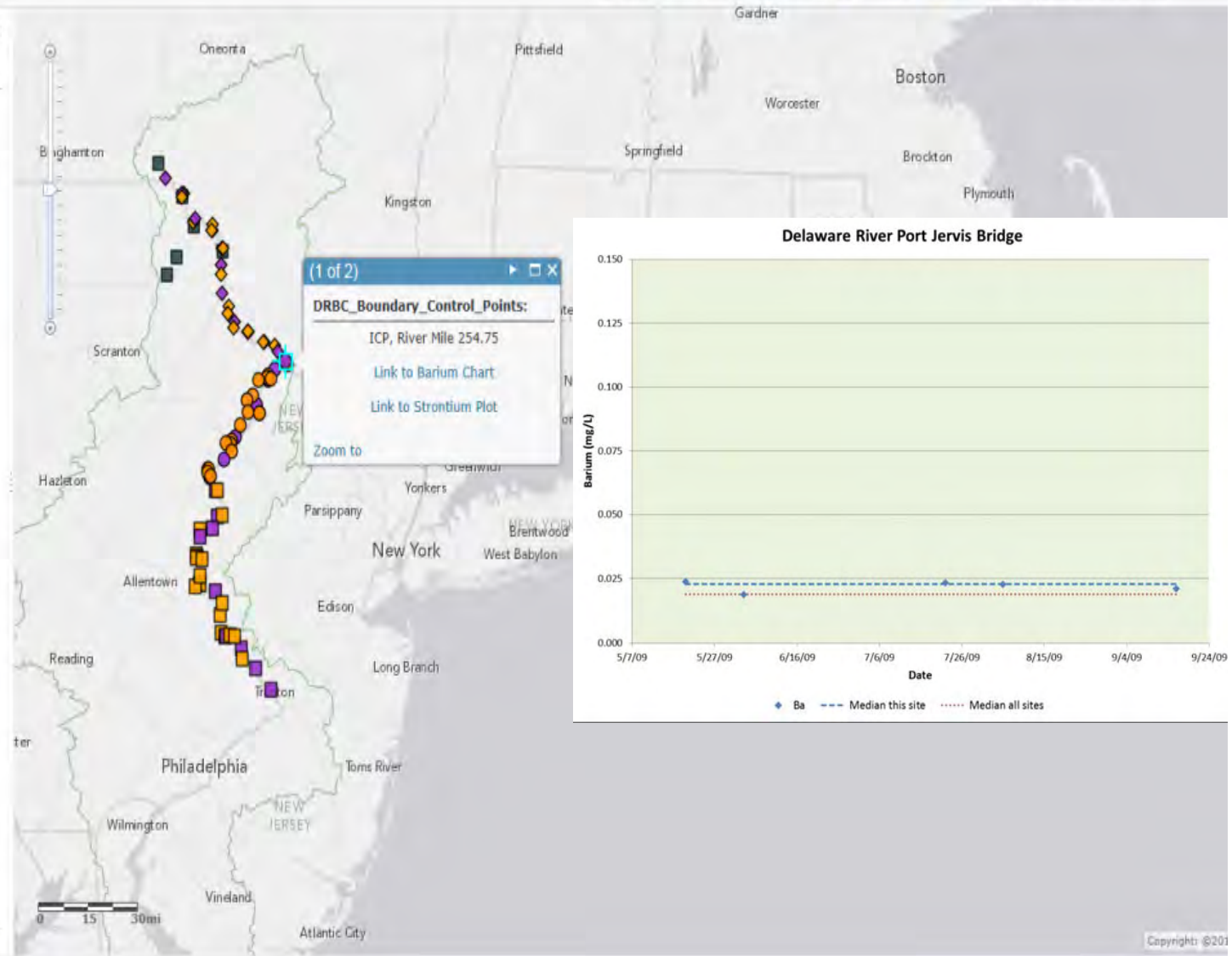
### DRBC Boundary Control Points

- Delaware Water Gap NRA, BCP
- Delaware Water Gap NRA, ICP
- Lower Delaware Scenic and Recreational River, BCP
- Lower Delaware Scenic and Recreational River, ICP
- Upper Delaware SRR, BCP
- Upper Delaware SRR, ICP

### DRBC HOBO Monitoring Sites



### DRB Boundary

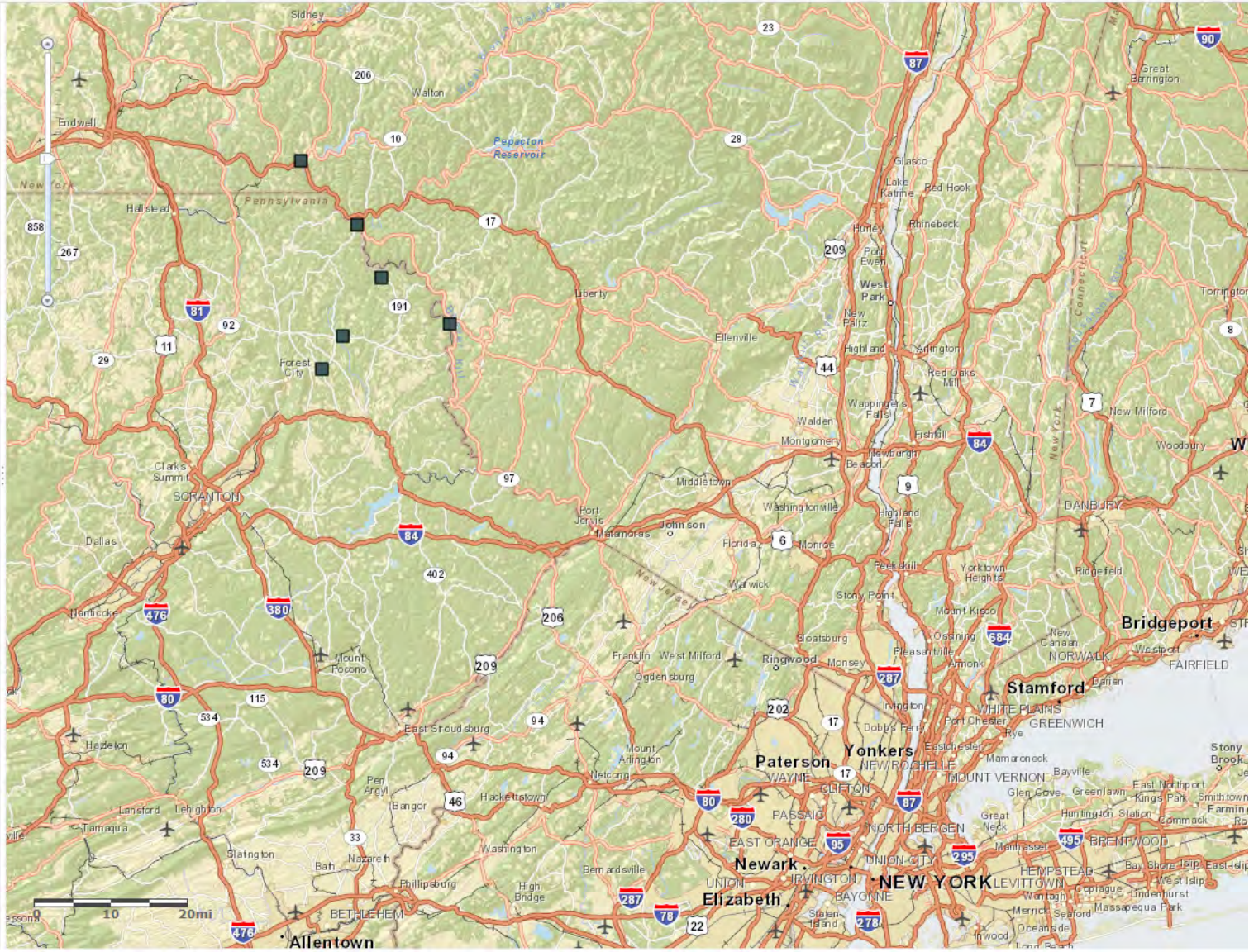


# HOME DRBC Water Quality Map

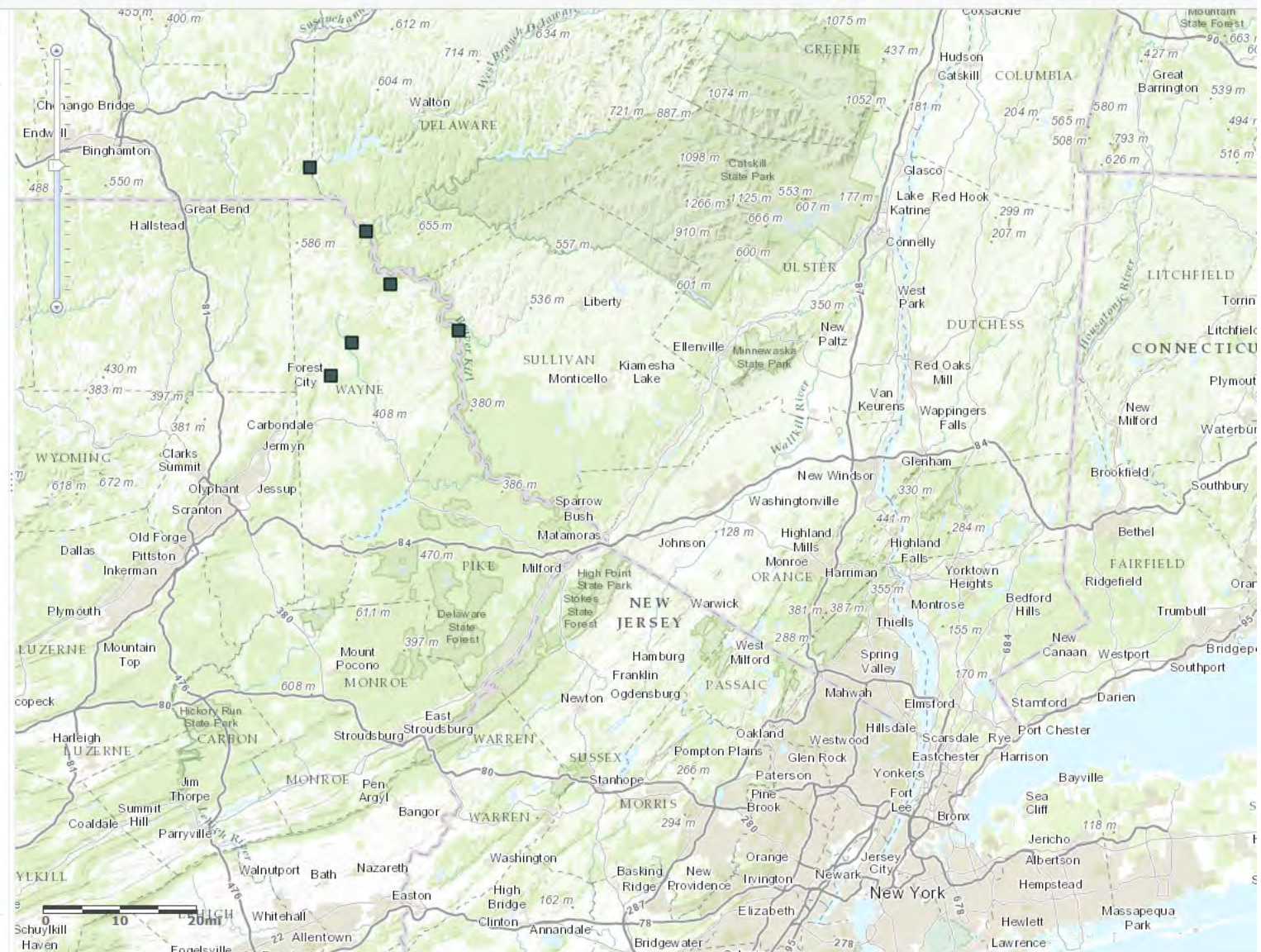
Details Add Basemap Save Share Print Measure

About Content Legend

- Contents
- hobotext
- BndCtrText
- DRBC Boundary Control Points
- DRBC HOBO Monitoring Sites
- Water Quality Streams
- DRB Boundary
- Streets



- Contents
- hobotext
  - BndCtrText
  - DRBC Boundary Control Points
  - DRBC HOBO Monitoring Sites
  - Water Quality Streams
  - DRB Boundary
  - Topographic



# Summary

- Interactive maps provide an effective way to communicate information to the public
- Improves transparency
- Resources optimized through partnerships to leverage infrastructure (ESRI, OIT, cloud)
- Over 500 hits in the first month
- DRBC plans to add additional maps and features

[www.drbc.net](http://www.drbc.net)

