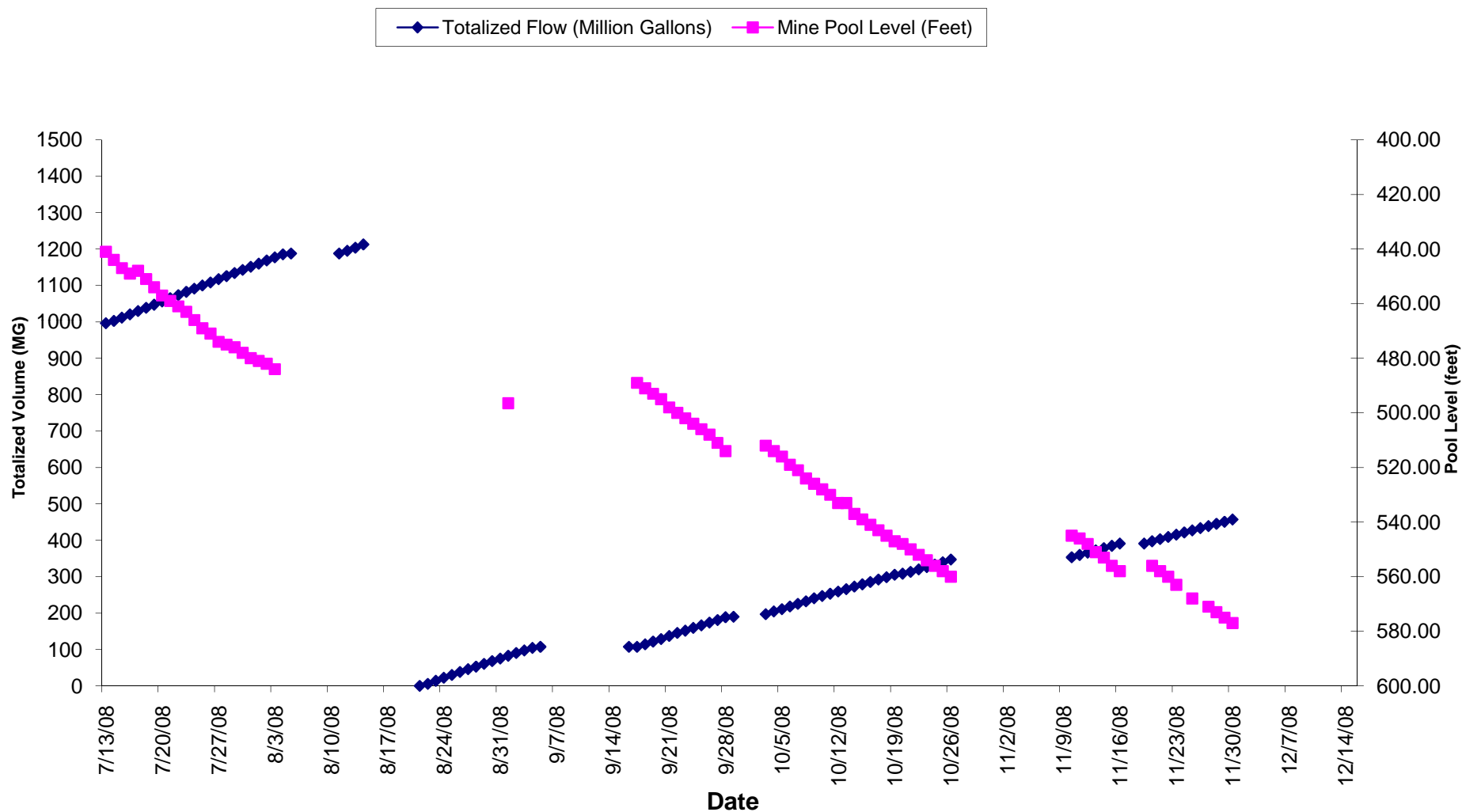
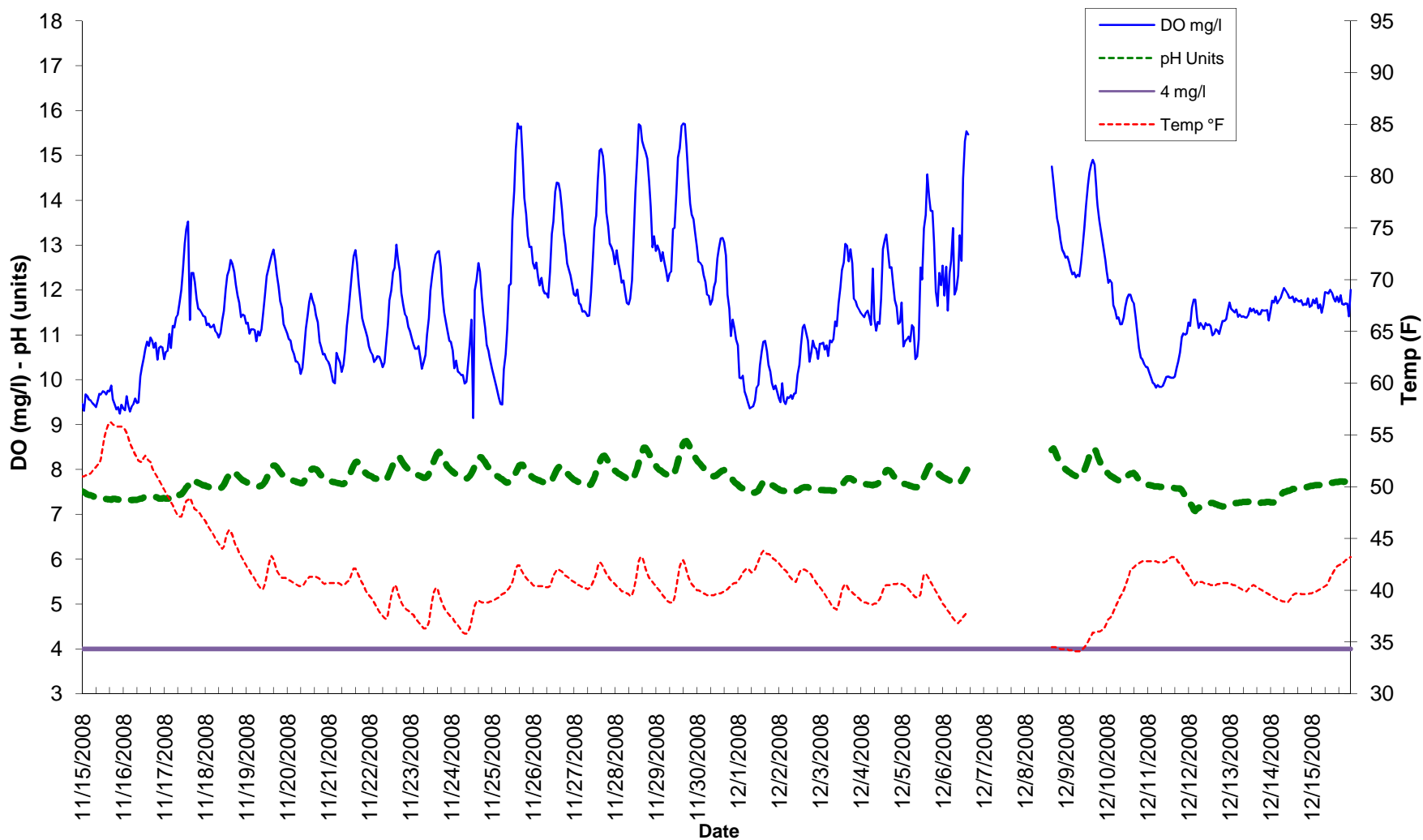


Wadesville Mine Water Pumped Volume and Pool Level



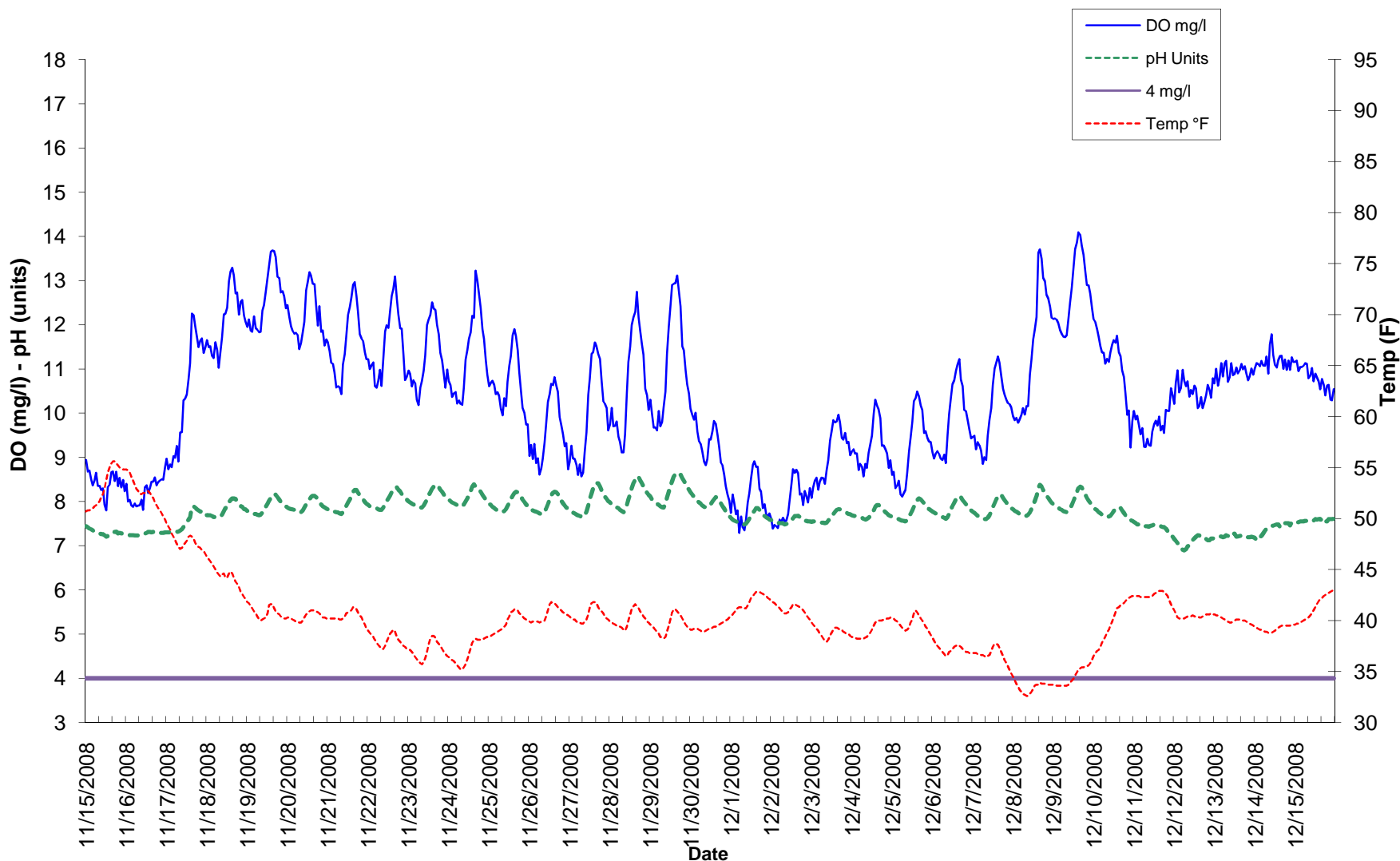
Pumps shutdown at noon on 8-5-2008
 August 21 new meter installed - Totalizer reset to 0
 Pumps shut down Oct 27th
 Pumps shut down Dec 1st

Limerick Intake DO, Temp and pH Data November 15 through December 15 2008

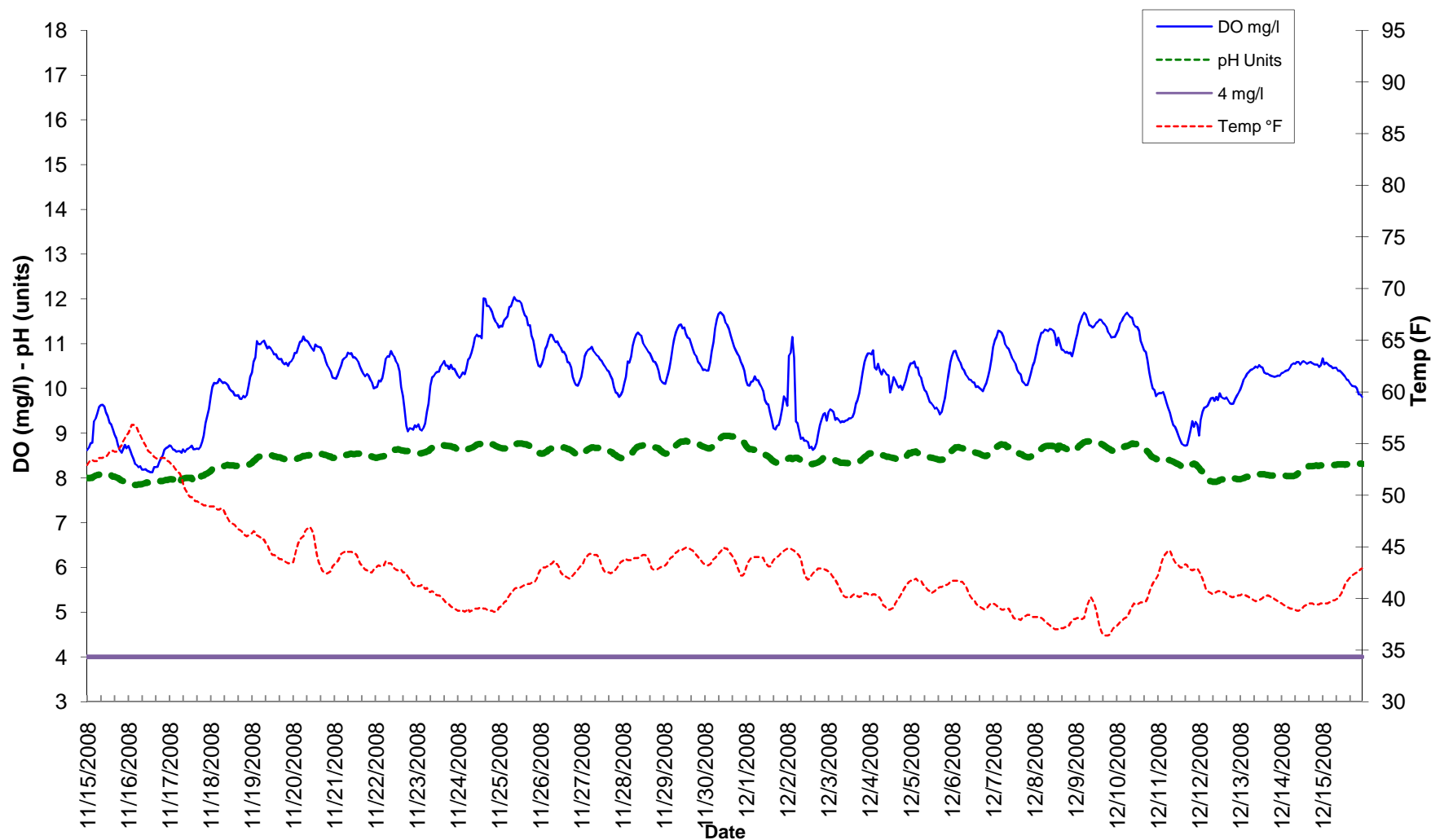


December 6th equipment failure

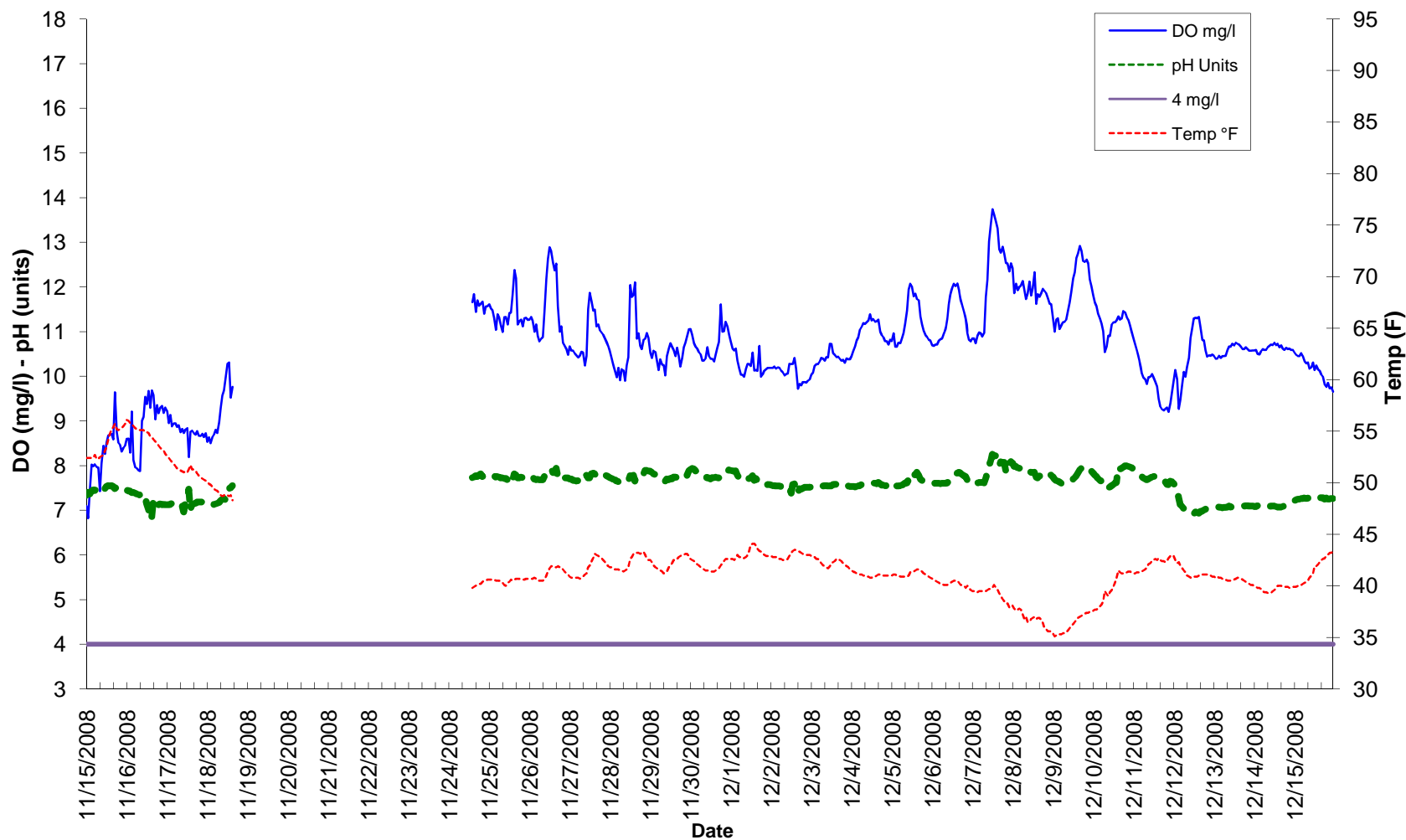
PA American Intake DO, Temp and pH Data November 15 through December 15 2008



Black Rock Dam DO, Temp and pH Data November 15 through December 15 2008

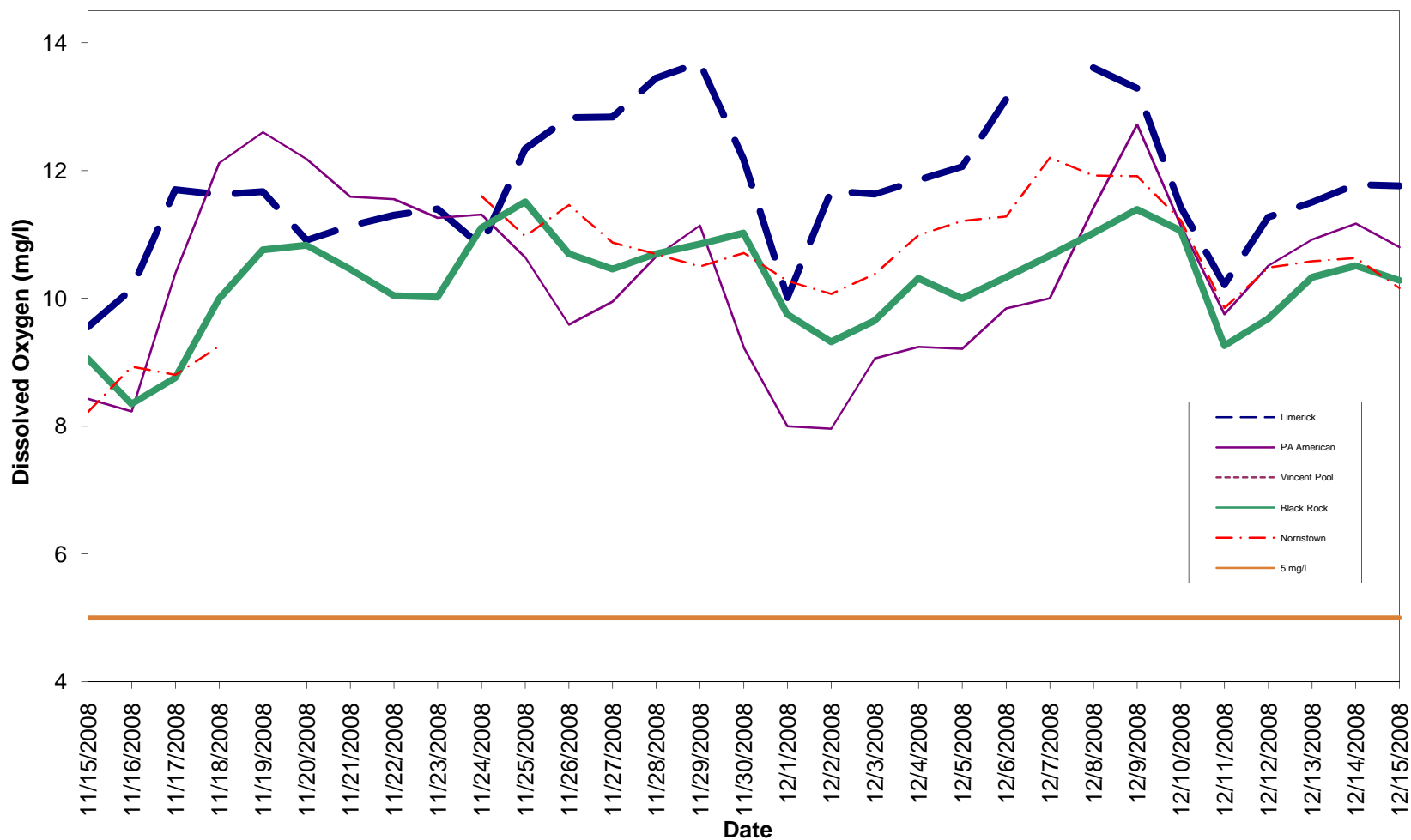


Norristown Pool DO, Temp and pH Data November 15 through December 15 2008



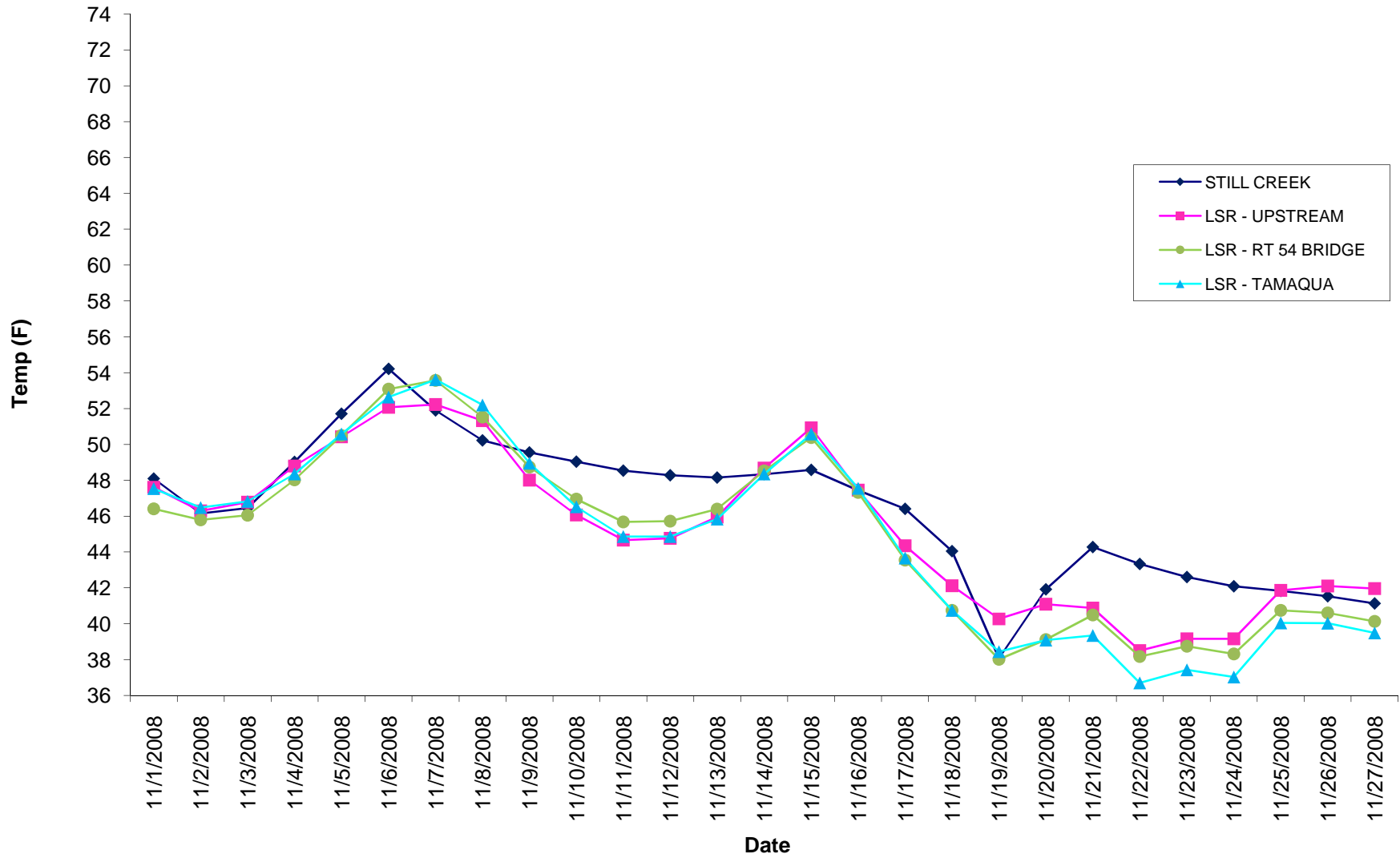
November 18th equipment failure

Mean Daily Schuylkill River Dissolved Oxygen November 15 through December 15 2008



Vincent Dam data provided by USGS when available.
 Data collection discontinued by USGS October through March at Vincent Dam
 November 18th equipment failure Norristown Dam
 December 6th equipment failure at Limerick

Still Creek & Little Schuylkill River Daily Average Temperatures November 2008



Schuylkill River & E. Norwegian Creek Daily Average Temperatures November 2008

