

Directions for Students

You are allowed to use your calculator for the following multiple-choice and open-ended items. You may also use the ruler and colored shapes.

Sample Multiple-Choice Question

The sample question below will show you what the multiple-choice questions are like and how to mark your answers. For each multiple-choice question, select the best answer and fill in the circle next to your choice. Make sure you fill in the correct circle.

Example:

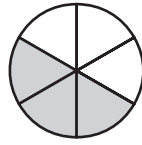
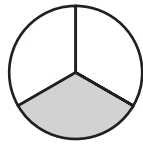
- 1. Mark has a stamp collection. He has 22 stamps from Japan, 34 from Canada, and 17 from Mexico. How many stamps does he have in all?**

- (A) 53
- (B) 63
- (C) 73
- (D) 83

The correct answer is C. The circle with the C in it has been filled in to show that C is the correct answer.



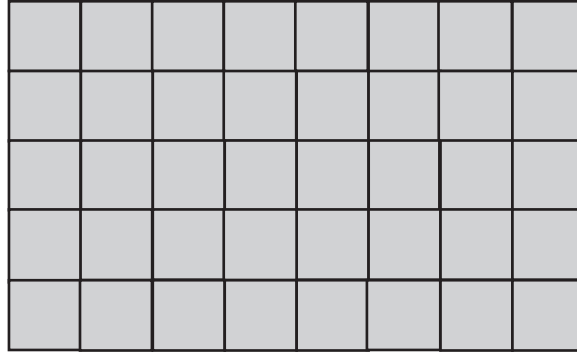
5. Compare the shaded regions. Which symbol belongs in the square?



- (A) $<$
- (B) $>$
- (C) $=$
- (D) **None of the above**



6. Amanda wants to cover the top of her doll’s table with colored paper. The top of the table is shown below.



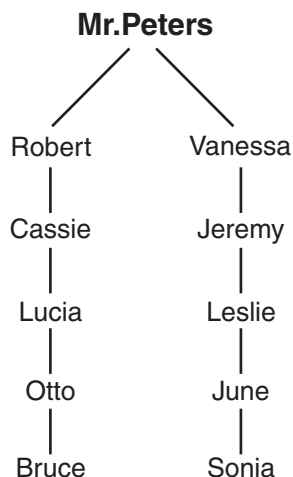
How many square centimeters of paper does Amanda need if each square equals 1 square centimeter?

- (A) 5
- (B) 8
- (C) 26
- (D) 40



7. The mathematics club uses this phone tree to remind members about club activities.

Mr. Peters calls Robert and Vanessa, and then each student calls the person whose name is listed under their name. This continues until every student is called.



Which student will Leslie call?

- (A) Jeremy
- (B) June
- (C) Lucia
- (D) Otto



8. Which of these letters has a line of symmetry?

P F T L

- Ⓐ P
- Ⓑ F
- Ⓒ T
- Ⓓ L



9. José had 25 baseball cards. His mother gave him some more cards. He now has 40 baseball cards. Which number sentence could you use to find how many baseball cards his mother gave him?

- (A) $\square - 40 = 25$
- (B) $25 + \square = 40$
- (C) $25 \times \square = 40$
- (D) $25 + 40 = \square$



11. Look at the pattern below.



If the pattern continues, how many dots will be in the next triangle?

- (A) 5
- (B) 10
- (C) 15
- (D) 20

If you have time, you may review your work in this section only.



DO NOT GO ON
UNTIL YOU ARE
TOLD TO DO SO.