



State of New Jersey
2014-15

03-1370-086

OVERVIEW

BERGEN
ENGLEWOOD CITY

DR. JOHN GRIECO ELEMENTARY SCHOOL
50 DURIE AVE
ENGLEWOOD, NJ 07631

GRADE SPAN 01-03

The New Jersey Department of Education (NJDOE) is pleased to present these annual reports of School Performance. These reports are designed to inform parents, educators and communities about how well a school is performing and preparing its students for college and careers.

In particular, the School Performance Reports seek to:

- **Focus** attention on metrics that are indicative of college and career readiness.
- **Benchmark** a school's performance against other peer schools that are educating similar students, against statewide outcomes, and against state targets to illuminate and build upon a school's strengths and identify areas for improvement.
- **Improve** educational outcomes for students by providing both longitudinal and growth data so that progress can be measured as part of an individual school's efforts to engage in continuous improvement.

While the New Jersey School Performance Reports seek to bring more information to educators and stakeholders about the performance of schools, they do not seek to distill the performance of schools into a single metric, a single score, or a simplified conclusion. Instead, the intention is that educators and stakeholders will engage in deep, lengthy conversations about the full range of the data presented. As educators know well, measuring school performance is both an art and a science. While the School Performance Report brings attention to important student outcomes, NJDOE does not collect data about other essential elements of a school, such as the provision of opportunities to participate and excel in extracurricular activities; the development of non-cognitive skills like time management and perseverance; the pervasiveness of a positive school culture or climate; or the attainment of other employability and technical skills, as many of these data are beyond both the capacity and resources of schools to measure and collect well.

To learn more about New Jersey's school accountability system, please visit: <http://www.nj.gov/education/educators/>.

DEMOGRAPHIC INFORMATION

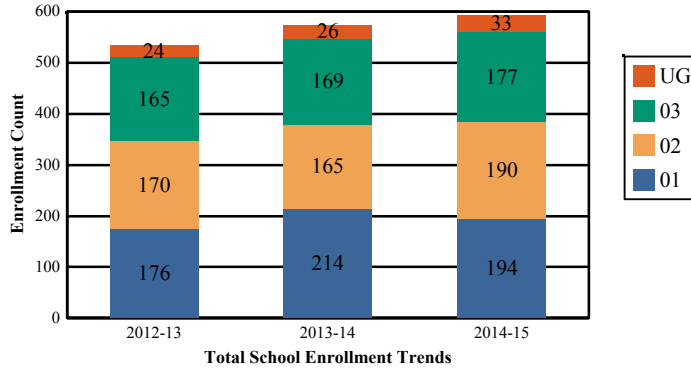
BERGEN
ENGLEWOOD CITY

GRADE SPAN 01-03

03-1370-086
DR. JOHN GRIECO ELEMENTARY SCHOOL
50 DURIE AVE
ENGLEWOOD, NJ 07631

Enrollment by Grade

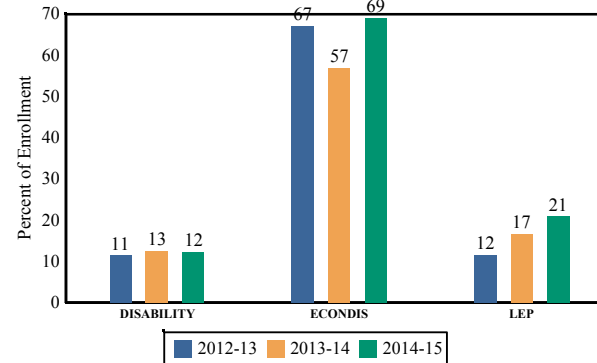
This graph presents the count of students who were 'on roll' by grade in October of each school year.



Note: "UG" represents the count of students who are 'on roll' in this school but who are educated in ungraded classrooms, meaning that the classrooms may contain students from multiple grade levels.

Enrollment Trends by Program Participation

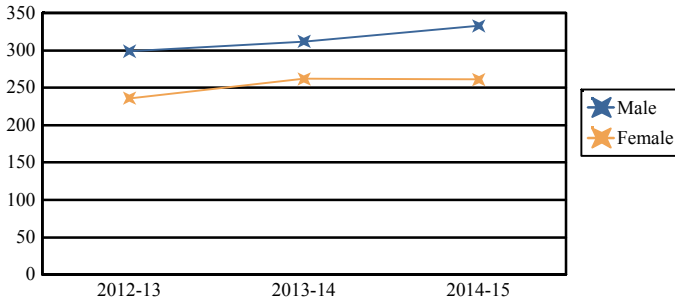
This graph presents the percentages of students by program participation who were 'on roll' in October of each school year.



Total School Enrollment	
2012-13	535
2013-14	574
2014-15	594

Enrollment by Gender

This graph presents the count of students by gender who were 'on roll' in October of each school year.

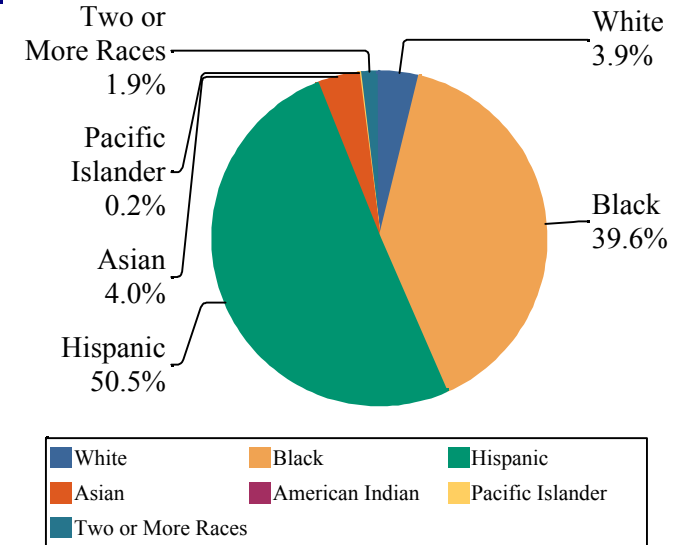


	Male	Female
2012-13	299	236
2013-14	312	262
2014-15	333	261

Current Year Enrollment by Program Participation		
2014-15	Count of Students	% of Enrollment
Students with Disability	73	12%
Economically Disadvantaged Students	410	69.0%
English Language Learners	124	20.9%

Enrollment by Ethnic/Racial Subgroup

This graph presents the percentages of enrollment for each subgroup defined by the No Child Left Behind Act of 2001.



Language Diversity

This table presents the percentage of students who primarily speak each language in their home.

2014-15	Percent
English	60.3%
Spanish	37.7%
Tagalog	0.5%
Urdu	0.2%
German	0.2%
Chinese	0.2%
Other	1.0%

ACADEMIC ACHIEVEMENT

**BERGEN
ENGLEWOOD CITY**

**DR. JOHN GRIECO ELEMENTARY SCHOOL
50 DURIE AVE
ENGLEWOOD, NJ 07631**

GRADE SPAN 01-03

The Academic Achievement section measures the content knowledge that students have in English Language Arts/Literacy (ELA/L) and Math as demonstrated in the 2014-2015 *Partnership for Assessment of Readiness for College and Careers (PARCC)* assessments. The below chart consist of three columns. The first column - Schoolwide Performance - includes the percentage of students in ELA/L and Math who met or exceeded grade level expectations. The middle column - Peer School Percentile - indicates how the school's outcomes compared to its peers. The last column - Statewide Percentile - indicates how the school's outcomes compared to schools across the state.

Academic Achievement Indicators	Schoolwide Performance	Peer Percentile	State Percentile
English Language Arts/Literacy Met or Exceeded Expectation	44%	49	34
Math Met or Exceeded Expectation	44%		

ESEA Waiver - English Language Arts/Literacy

This table presents, for each subgroup in the school, the total number of valid test scores, the percentage of students who met or exceeded expectations, the assessment participation goal, and the participation rate. The participation goal is established as 95% by the United States Department of Education.

Subgroups	Valid Scores	% Meeting Standards	Participation Goal	Participation Rate	Met Participation?
Schoolwide	179	44.2%	95%	97.3%	YES
White	-	-	--	--	--
African American	70	44.3%	95%	95.9%	YES
Hispanic	88	39.8%	95%	97.8%	YES
American Indian	-	-	--	--	--
Asian	-	-	--	--	--
Two or More Races	-	-	--	--	--
Students with Disability	-	-	--	--	--
English Language Learners	37	45.9%	95%	100%	-
Economically Disadvantaged Students	123	37.4%	95%	96.1%	YES

YES* = Met Participation Rate (Participation Averaging applied)

Data is presented for subgroups when the count is high enough under ESEA Waiver suppression rules.

ESEA Waiver - Math

This table presents, for each subgroup in the school, the total number of valid test scores, the percentage of students who met or exceeded expectations, the assessment participation goal, and the participation rate. The participation goal is established as 95% by the United States Department of Education.

Subgroups	Valid Scores	% Meeting Standards	Participation Goal	Participation Rate	Met Participation?
Schoolwide	180	44.4%	95%	97.3%	YES
White	-	-	--	--	--
African American	70	44.3%	95%	95.9%	YES
Hispanic	89	41.6%	95%	97.8%	YES
American Indian	-	-	--	--	--
Asian	-	-	--	--	--
Two or More Races	-	-	--	--	--
Students with Disability	-	-	--	--	--
English Learner Students	38	47.3%	95%	100%	-
Economically Disadvantaged Students	124	37.9%	95%	96.9%	YES

YES* = Met Participation Rate (Participation Averaging applied)

Data is presented for subgroups when the count is high enough under ESEA Waiver suppression rules.

PARCC Performance Level

The PARCC assesses how well students have learned grade-level material in English Language Arts/Literacy (ELA/L) and Math. The tests include questions that measure students' fundamental skills and knowledge, and require them to think critically, solve problems and support or explain their answers.

The PARCC reports students' overall scale scores that range from 650 to 850. To determine whether students have met academic expectations for their grade level/course in ELA/L and Math, students' overall scale scores are categorized into five Performance Levels. Students performing at levels 4 and 5 (met or exceeded expectations) have demonstrated readiness for the next grade level/course, and are on track for college and careers.

Five Performance Levels				
Level 1: Did Not Yet Meet Expectations <i>(Min. 650)</i>	Level 2: Partially Met Expectations	Level 3: Approached Expectations	Level 4: Met Expectations	Level 5: Exceeded Expectations <i>(Max. 850)</i>

ACADEMIC ACHIEVEMENT

**BERGEN
ENGLEWOOD CITY**

GRADE SPAN 01-03

**DR. JOHN GRIECO ELEMENTARY SCHOOL
50 DURIE AVE
ENGLEWOOD, NJ 07631**

PARCC ELA Performance Distribution - Grade - 03

This table presents the grade level outcomes, as measured by PARCC, in all five performance levels for all subgroups. PARCC consists of five performance levels: Level 1 - Did not yet meet grade-level expectations, Level 2 -Partially met expectations, Level 3 - Approached expectations, Level 4 - Met expectations, and Level 5 - Exceeded expectations.

Subgroup	Valid Scores	Mean Scale Score	State Mean Scale Score	% Level_1	% Level_2	% Level_3	% Level_4	% Level_5	% Met/ Exceeded Expectation	State % Met/Exceeded Expectation
Schoolwide	179	746	744	7%	16%	32%	41%	3%	44%	44%
White	-	-	753	-	-	-	-	-	-	55%
African American	70	744	725	7%	21%	27%	44%	0%	44%	26%
Hispanic	88	745	727	8%	15%	38%	34%	6%	40%	26%
American Indian	-	-	738	-	-	-	-	-	-	40%
Asian	-	-	769	-	-	-	-	-	-	70%
Two or More Races	-	-	751	-	-	-	-	-	-	53%
Students with Disability	21	736	718	10%	33%	24%	33%	0%	33%	24%
English Language Learners	37	746	709	5%	16%	32%	43%	3%	46%	11%
Economically Disadvantaged Students	123	741	724	11%	15%	37%	33%	4%	37%	24%

ACADEMIC ACHIEVEMENT

**BERGEN
ENGLEWOOD CITY**

GRADE SPAN 01-03

**DR. JOHN GRIECO ELEMENTARY SCHOOL
50 DURIE AVE
ENGLEWOOD, NJ 07631**

PARCC MATH - Performance Distribution - Grade - 03

This table presents the grade level outcomes, as measured by PARCC, in all five performance levels for all subgroups. PARCC consists of five performance levels: Level 1 - Did not yet meet grade-level expectations, Level 2 -Partially met expectations, Level 3 - Approached expectations, Level 4 - Met expectations, and Level 5 - Exceeded expectations.

Subgroup	Valid Scores	Mean Scale Score	State Mean Scale Score	% Level_1	% Level_2	% Level_3	% Level_4	% Level_5	% Met/ Exceeded Expectation	State % Met/Exceeded Expectation
Schoolwide	180	746	746	2%	18%	36%	38%	6%	44%	46%
White	-	-	752	-	-	-	-	-	-	56%
African American	70	744	728	1%	24%	30%	41%	3%	44%	25%
Hispanic	89	746	733	1%	12%	45%	36%	6%	42%	28%
American Indian	-	-	742	-	-	-	-	-	-	41%
Asian	-	-	772	-	-	-	-	-	-	77%
Two or More Races	-	-	751	-	-	-	-	-	-	54%
Students with Disability	21	744	727	0%	19%	43%	29%	10%	38%	27%
English Language Learners	38	749	724	0%	11%	42%	45%	3%	47%	17%
Economically Disadvantaged Students	124	742	730	2%	21%	40%	33%	5%	38%	26%

2015 National Assessment Educational Progress (NAEP)

The National Assessment of Educational Progress (NAEP) is the largest national assessment of what our nation's students know and can do. NAEP assesses fourth-, eighth-, and twelfth-grade students in subjects such as reading, mathematics, science, and writing. The reporting of NAEP scores on state report cards is a federal mandate. The results of NAEP are also published as the Nation's Report Card, and are available for the nation, states, and, in some cases, urban districts. The NAEP scores on the report card include grades four and eight 2015 reading and math scores for New Jersey which are the last scores published.

For subgroup outcomes, visit:

Reading Grade 4 <http://www.nj.gov/education/pr/1415/naep/naep4read.html>
 Reading Grade 8 <http://www.nj.gov/education/pr/1415/naep/naep8read.html>
 Math Grade 4 <http://www.nj.gov/education/pr/1415/naep/naep4math.html>
 Math Grade 8 <http://www.nj.gov/education/pr/1415/naep/naep8math.html>

For more information, visit <http://nces.ed.gov/nationsreportcard/>

Proficiency Percentages

Subject	Grade	State/Nation	Below Basic	Basic	Proficient	Advanced
Reading	Grade 4	State (NJ)	25	33	31	12
	Grade 4	Nation	31	33	27	9
	Grade 8	State (NJ)	20	39	35	6
	Grade 8	Nation	24	42	31	4
Math	Grade 4	State (NJ)	14	39	38	9
	Grade 4	Nation	18	42	33	7
	Grade 8	State (NJ)	21	32	30	16
	Grade 8	Nation	29	38	25	8

COLLEGE AND CAREER READINESS

**BERGEN
ENGLEWOOD CITY**

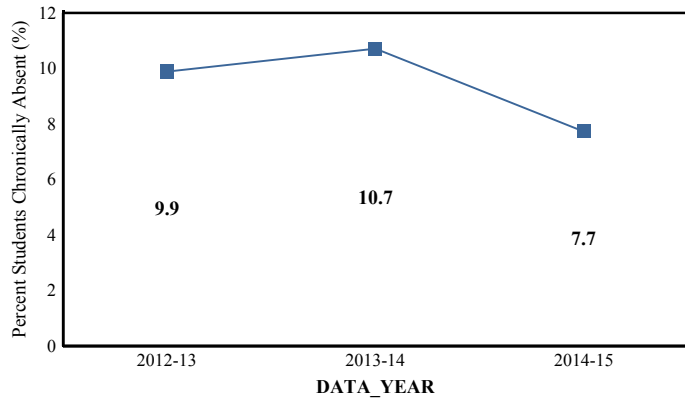
**DR. JOHN GRIECO ELEMENTARY SCHOOL
50 DURIE AVE
ENGLEWOOD, NJ 07631**

GRADE SPAN 01-03

Students in both elementary and middle schools begin to demonstrate college readiness behaviors long before they even enter high school. Among the behaviors that research has shown to be indicative of successfully graduating high school is regularly attending school. For all elementary schools, this includes the percentage of students that are chronically absent each year, defined as missing more than 10% of possible school days.

Chronic Absenteeism Trend

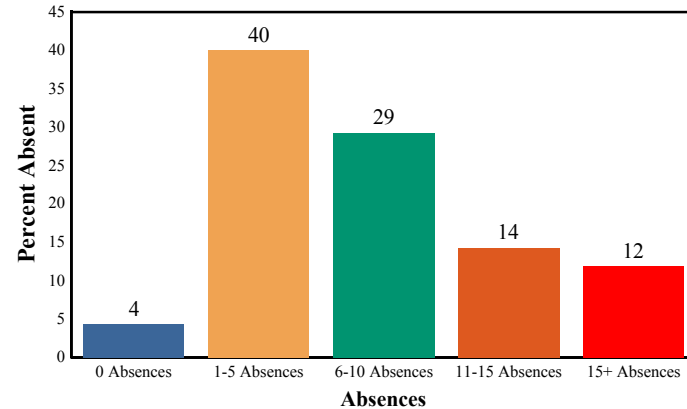
This graph presents the percentage of the enrolled students who were chronically absent for the past three years.



Chronic Absenteeism for 2014-15	7.74%
--	--------------

Absenteeism

The chart below presents the percentage of students who were absent in each category of absence: 0 absences, 1- 5 absences, 6 - 10 absences, 11 - 15 absences, and more than 15 absences. An absence is defined as being ‘not present’ and includes the days missed regardless of whether they were determined to be excused or unexcused by the school.



0 Absences	1-5 Absences	6-10 Absences
11-15 Absences	15+ Absences	

WITHIN SCHOOL ACHIEVEMENT GAP

**BERGEN
ENGLEWOOD CITY**

**DR. JOHN GRIECO ELEMENTARY SCHOOL
50 DURIE AVE
ENGLEWOOD, NJ 07631**

GRADE SPAN 01-03

This section of the performance report presents data about the achievement gap that exists within a school - as measured by the difference between the students' scale scores at the 25th and 75th percentile in the school, the Interquartile Range (IQR). Taken together with an understanding of the overall and average achievement levels in the school, the IQR furthers an understanding of the range of student outcomes that exist in a school. A school gap smaller than the state gap indicates that the school's range of student outcomes is narrower than the state's while a school gap larger than the state gap indicates that the school's range of student outcomes is broader than the state's.

Grade Level - 03

PARCC Language Arts 25th %ile vs 75th%ile

This table presents the scale scores associated with students at the bottom (0th percentile), the 25th percentile, the 50th percentile, the 75th percentile and the top (99th percentile) of school's distribution.

Percentile	School Scale Score	State Scale Score
99th	830	850
75th	768	770
50th	744	743
25th	726	715
0th	666	650

	Scale Score Gap - School	Scale Score Gap - State
25th vs 75th Gap	42	55

Grade Level - 03

PARCC MATH 25th %ile vs 75th%ile

This table presents the scale scores associated with students at the bottom (0th percentile), the 25th percentile, the 50th percentile, the 75th percentile and the top (99th percentile) of school's distribution.

Percentile	School Scale Score	State Scale Score
99th	812	850
75th	762	767
50th	745	745
25th	730	722
0th	696	650

	Scale Score Gap - School	Scale Score Gap - State
25th vs 75th Gap	32	45

Length of School Day

This table presents the amount of time a school is in session for a typical student on a normal school day.

	School
2014-15	6 Hrs. 35 Mins.

Student Suspension Rate

This table presents the percentage of students who were suspended one or more times during the school year.

	School
2014-15	0.0%

Instructional Time

This table presents the amount of time that a typical student is engaged in instructional activities under the supervision of a certified teacher.

2014-15	School
Full Time	5 Hrs. 55 Mins.
Shared Time	0 Hrs. 0 Mins.

Student Expulsions

This table presents the number of students who were expelled from the school and district during the school year.

	School
2014-15	0

Student to Staff Ratio

This table presents the count of students per faculty member or administrator in the school. All staff are counted in full-time equivalents.

2014-15	School
Faculty	12
Administrators	149

SCHOOL PEER GROUP

**BERGEN
ENGLEWOOD CITY**

GRADE SPAN 01-03

**DR. JOHN GRIECO ELEMENTARY SCHOOL
50 DURIE AVE
ENGLEWOOD, NJ 07631**

This table presents the list of peer schools in alphabetical order by county name that was created specifically for this school (highlighted in yellow). Peer schools are drawn from across the state and represent schools that have similar grade configurations and that are educating students of similar demographic characteristics, as measured by enrollment in Free/Reduced Lunch Programs, Limited English Proficiency or Special Education Programs.

<u>COUNTY NAME</u>	<u>DISTRICT NAME</u>	<u>SCHOOL NAME</u>	<u>CDS CODE</u>	<u>GRADES PAN</u>	<u>ECONOMICALLY DISADVANTAGED</u>	<u>ENGLISH LANGUAGE LEARNERS</u>	<u>SPECIAL EDUCATION</u>
ATLANTIC	ABSECON CITY	H ASHTON MARSH	01-0010-060	KG-04	46.8%	8.9%	9.8%
BERGEN	BOGOTA BORO	LILLIAN M. STEEN	03-0440-050	KG-06	50.3%	6.8%	14.2%
BERGEN	ELMWOOD PARK	GILBERT AVENUE SCHOOL	03-1345-080	PK-05	43%	5.6%	7.6%
BERGEN	ELMWOOD PARK	SIXTEENTH AVENUE SCHOOL	03-1345-090	PK-05	45.3%	4.3%	14.6%
BERGEN	ENGLEWOOD CITY	DR. JOHN GRIECO ELEMENTARY SCHOOL	03-1370-086	01-03	69%	20.9%	12.3%
BERGEN	HACKENSACK CITY	NELLIE K. PARKER	03-1860-090	PK-04	56.4%	11.3%	12.2%
BERGEN	PALISADES PARK	LINDBERGH ELEMENTARY SCHOOL	03-3910-070	02-07	49%	11.4%	8.2%
BURLINGTON	DELANCO TWP	M. JOAN PEARSON ELEMENTARY SCHOOL	05-1030-030	KG-05	39.9%	1.9%	13.8%
BURLINGTON	PALMYRA BORO	CHARLES STREET SCHOOL	05-3920-060	PK-06	43.2%	1.6%	16.9%
BURLINGTON	PEMBERTON TWP	SAMUEL T. BUSANSKY SCHOOL	05-4050-135	03-05	50%	1.3%	21.3%
CAMDEN	BELLMAWR BORO	ETHEL M BURKE ELEMENTARY SCHOOL	07-0260-030	PK-04	42.9%	6.4%	6.8%
CAMDEN	RUNNEMEDE BORO	GRADE DOWNING ELEMENTARY SCHOOL	07-4590-030	KG-03	38%	2.5%	10.1%
CHARTERS	THE ETHICAL COMMUNITY CHARTER SCHO	THE ETHICAL COMMUNITY CHARTER SCHO	80-6030-912	KG-06	37.5%	0%	11.7%
ESSEX	BLOOMFIELD TWP	FAIRVIEW ELEMENTARY	13-0410-110	PK-06	45.5%	4.9%	11.2%
GLOUCESTER	DEPTFORD TWP	LAKE TRACT ELEMENTARY SCHOOL	15-1100-105	02-06	40.4%	0%	13.3%
GLOUCESTER	ELK TWP	AURA ELEMENTARY SCHOOL	15-1330-010	PK-06	38.2%	0.8%	12.8%
GLOUCESTER	GLASSBORO	THOMAS E. BOWE SCHOOL	15-1730-090	04-06	44.2%	1.6%	18%
HUDSON	KEARNY TOWN	ROOSEVELT	17-2410-100	PK-06	37.5%	0%	13.7%
MERCER	EWING TWP	WL ANTHEIL ELEMENTARY SCHOOL	21-1430-140	PK-05	44.3%	4%	14.5%
MERCER	HAMILTON TWP	MCGALLIARD ELEMENTARY SCHOOL	21-1950-200	PK-05	38.2%	1.5%	11.1%
MIDDLESEX	EDISON TWP	BENJAMIN FRANKLIN ELEMENTARY SCHOOL	23-1290-065	KG-05	35.7%	0%	9%
MIDDLESEX	JAMESBURG BORO	JOHN F. KENNEDY ELEMENTARY SCHOOL	23-2370-080	PK-05	48.6%	9.6%	9.5%

SCHOOL PEER GROUP

BERGEN

ENGLEWOOD CITY

DR. JOHN GRIECO ELEMENTARY SCHOOL

50 DURIE AVE

ENGLEWOOD, NJ 07631

GRADE SPAN 01-03

MONMOUTH	MIDDLETOWN TWP	OCEAN AVENUE ELEMENTARY SCHOOL	25-3160-080	KG-05	39.1%	1.4%	10%
OCEAN	TOMS RIVER REGIONAL	WALNUT STREET ELEMENTARY SCHOOL	29-5190-107	KG-05	50.1%	6.2%	14.5%
PASSAIC	CLIFTON CITY	SCHOOL #8	31-0900-140	KG-05	37.3%	2.3%	10%
SOMERSET	FRANKLIN TWP	ELIZABETH AVENUE SCHOOL	35-1610-070	PK-04	51.1%	13.2%	5.4%
UNION	PLAINFIELD CITY	FREDERIC W. COOK ELEMENTARY SCHOOL	39-4160-120	KG-05	61.6%	13.6%	14.6%
UNION	RAHWAY CITY	MADISON ELEMENTARY	39-4290-110	PK-06	49.4%	9.6%	9.2%
UNION	RAHWAY CITY	ROOSEVELT ELEMENTARY SCHOOL	39-4290-120	PK-06	53.3%	8%	17.8%
UNION	UNION TWP	HANNAH CALDWELL ELEM SCH	39-5290-083	PK-04	37.5%	4.1%	6.8%
UNION	UNION TWP	JEFFERSON ELEMENTARY	39-5290-085	05	42.7%	1.3%	13.6%