



State of New Jersey

2014-15

03-1550-070

SCHOOL NO. 2

2047 JONES ROAD

FORT LEE, NJ 07024

OVERVIEW

BERGEN

FORT LEE BORO

GRADE SPAN PK-06

The New Jersey Department of Education (NJDOE) is pleased to present these annual reports of School Performance. These reports are designed to inform parents, educators and communities about how well a school is performing and preparing its students for college and careers.

In particular, the School Performance Reports seek to:

- **Focus** attention on metrics that are indicative of college and career readiness.
- **Benchmark** a school's performance against other peer schools that are educating similar students, against statewide outcomes, and against state targets to illuminate and build upon a school's strengths and identify areas for improvement.
- **Improve** educational outcomes for students by providing both longitudinal and growth data so that progress can be measured as part of an individual school's efforts to engage in continuous improvement.

While the New Jersey School Performance Reports seek to bring more information to educators and stakeholders about the performance of schools, they do not seek to distill the performance of schools into a single metric, a single score, or a simplified conclusion. Instead, the intention is that educators and stakeholders will engage in deep, lengthy conversations about the full range of the data presented. As educators know well, measuring school performance is both an art and a science. While the School Performance Report brings attention to important student outcomes, NJDOE does not collect data about other essential elements of a school, such as the provision of opportunities to participate and excel in extracurricular activities; the development of non-cognitive skills like time management and perseverance; the pervasiveness of a positive school culture or climate; or the attainment of other employability and technical skills, as many of these data are beyond both the capacity and resources of schools to measure and collect well.

To learn more about New Jersey's school accountability system, please visit: <http://www.nj.gov/education/educators/>.

DEMOGRAPHIC INFORMATION

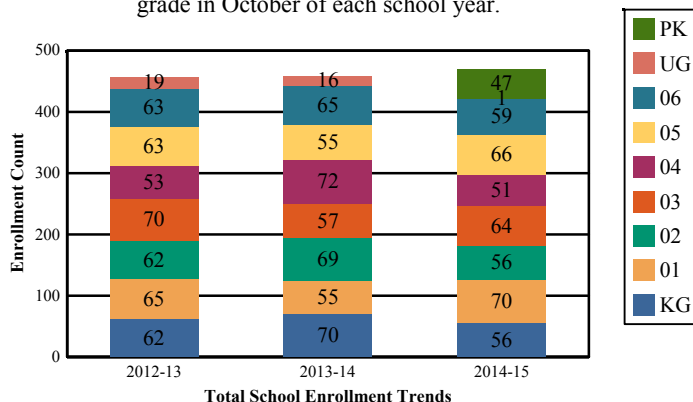
BERGEN
FORT LEE BORO

GRADE SPAN PK-06

03-1550-070
SCHOOL NO. 2
2047 JONES ROAD
FORT LEE, NJ 07024

Enrollment by Grade

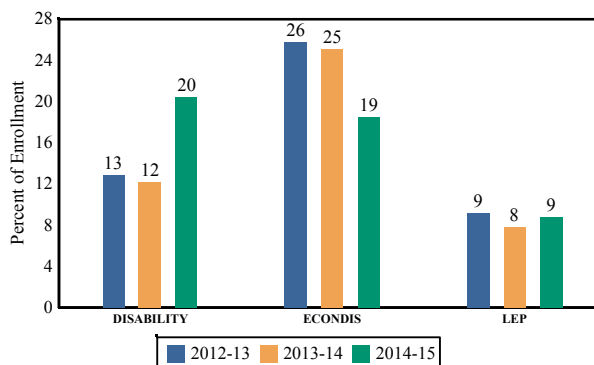
This graph presents the count of students who were 'on roll' by grade in October of each school year.



Note: "UG" represents the count of students who are 'on roll' in this school but who are educated in ungraded classrooms, meaning that the classrooms may contain students from multiple grade levels.

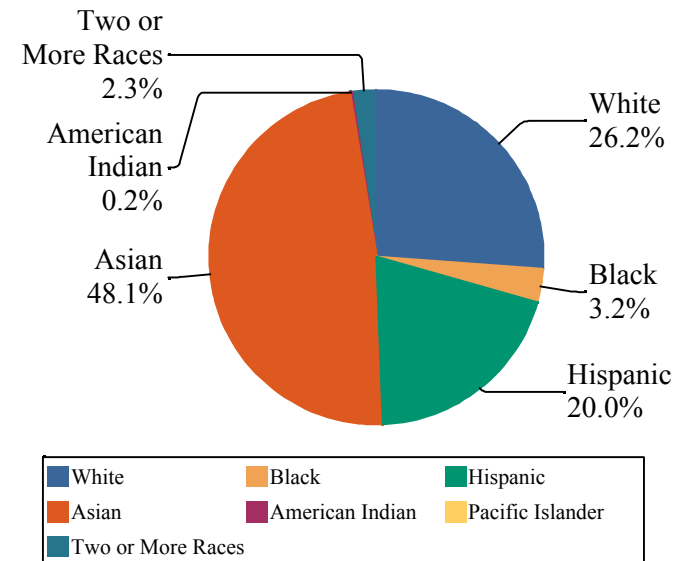
Enrollment Trends by Program Participation

This graph presents the percentages of students by program participation who were 'on roll' in October of each school year.



Enrollment by Ethnic/Racial Subgroup

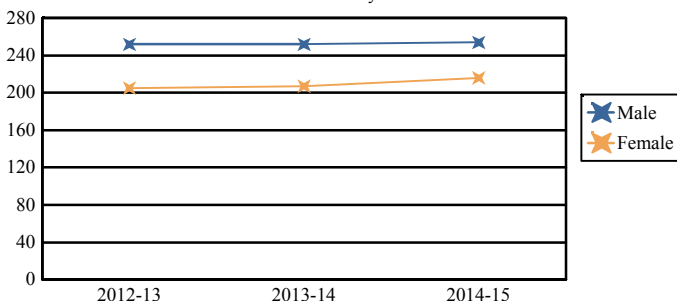
This graph presents the percentages of enrollment for each subgroup defined by the No Child Left Behind Act of 2001.



Total School Enrollment	
2012-13	457
2013-14	459
2014-15	470

Enrollment by Gender

This graph presents the count of students by gender who were 'on roll' in October of each school year.



	Male	Female
2012-13	252	205
2013-14	252	207
2014-15	254	216

Current Year Enrollment by Program Participation

2014-15	Count of Students	% of Enrollment
Students with Disability	96	20%
Economically Disadvantaged Students	87	18.5%
English Language Learners	41	8.7%

Language Diversity

This table presents the percentage of students who primarily speak each language in their home.

2014-15	Percent
English	46.3%
Korean	24.0%
Spanish	9.4%
Chinese	5.1%
Russian	4.3%
Japanese	2.9%
Other	8.0%

ACADEMIC ACHIEVEMENT

**BERGEN
FORT LEE BORO**

GRADE SPAN PK-06

The Academic Achievement section measures the content knowledge that students have in English Language Arts/Literacy (ELA/L) and Math as demonstrated in the 2014-2015 *Partnership for Assessment of Readiness for College and Careers* (PARCC) assessments. The below chart consist of three columns. The first column - Schoolwide Performance - includes the percentage of students in ELA/L and Math who met or exceeded grade level expectations. The middle column - Peer School Percentile - indicates how the school's outcomes compared to its peers. The last column - Statewide Percentile - indicates how the school's outcomes compared to schools across the state.

Academic Achievement Indicators	Schoolwide Performance	Peer Percentile	State Percentile
English Language Arts/Literacy Met or Exceeded Expectation	64%	68	71
Math Met or Exceeded Expectation	60%		

ESEA Waiver - English Language Arts/Literacy

This table presents, for each subgroup in the school, the total number of valid test scores, the percentage of students who met or exceeded expectations, the assessment participation goal, and the participation rate. The participation goal is established as 95% by the United States Department of Education.

Subgroups	Valid Scores	% Meeting Standards	Participation Goal	Participation Rate	Met Participation?
Schoolwide	231	63.7%	95%	99.2%	YES
White	74	60.8%	95%	100%	YES
African American	-	-	--	--	--
Hispanic	37	32.4%	95%	100%	YES
American Indian	-	-	--	--	--
Asian	112	77.7%	95%	99.1%	YES
Two or More Races	-	-	--	--	--
Students with Disability	-	-	--	--	--
English Language Learners	-	-	--	--	--
Economically Disadvantaged Students	52	48.1%	95%	98.2%	YES

YES* = Met Participation Rate (Participation Averaging applied)

Data is presented for subgroups when the count is high enough under ESEA Waiver suppression rules.

ACADEMIC ACHIEVEMENT

**BERGEN
FORT LEE BORO**

GRADE SPAN PK-06

**03-1550-070
SCHOOL NO. 2
2047 JONES ROAD
FORT LEE, NJ 07024**

ESEA Waiver - Math

This table presents, for each subgroup in the school, the total number of valid test scores, the percentage of students who met or exceeded expectations, the assessment participation goal, and the participation rate. The participation goal is established as 95% by the United States Department of Education.

Subgroups	Valid Scores	% Meeting Standards	Participation Goal	Participation Rate	Met Participation?
Schoolwide	232	59.5%	95%	98.4%	YES
White	74	54%	95%	100%	YES
African American	-	-	--	--	--
Hispanic	36	25%	95%	97.6%	YES
American Indian	-	-	--	--	--
Asian	114	75.4%	95%	99.2%	YES
Two or More Races	-	-	--	--	--
Students with Disability	41	12.2%	95%	95.8%	YES
English Learner Students	-	-	--	--	--
Economically Disadvantaged Students	51	37.3%	95%	96.4%	YES

YES* = Met Participation Rate (Participation Averaging applied)

Data is presented for subgroups when the count is high enough under ESEA Waiver suppression rules.

ACADEMIC ACHIEVEMENT

BERGEN

FORT LEE BORO

GRADE SPAN PK-06

PARCC Performance Level

The PARCC assesses how well students have learned grade-level material in English Language Arts/Literacy (ELA/L) and Math. The tests include questions that measure students' fundamental skills and knowledge, and require them to think critically, solve problems and support or explain their answers.

The PARCC reports students' overall scale scores that range from 650 to 850. To determine whether students have met academic expectations for their grade level/course in ELA/L and Math, students' overall scale scores are categorized into five Performance Levels. Students performing at levels 4 and 5 (met or exceeded expectations) have demonstrated readiness for the next grade level/course, and are on track for college and careers.

Five Performance Levels				
Level 1: Did Not Yet Meet Expectations <i>(Min. 650)</i>	Level 2: Partially Met Expectations	Level 3: Approached Expectations	Level 4: Met Expectations	Level 5: Exceeded Expectations <i>(Max. 850)</i>

ACADEMIC ACHIEVEMENT

**BERGEN
FORT LEE BORO**

GRADE SPAN PK-06

PARCC ELA Performance Distribution - Grade - 03

This table presents the grade level outcomes, as measured by PARCC, in all five performance levels for all subgroups. PARCC consists of five performance levels: Level 1 - Did not yet meet grade-level expectations, Level 2 -Partially met expectations, Level 3 - Approached expectations, Level 4 - Met expectations, and Level 5 - Exceeded expectations.

Subgroup	Valid Scores	Mean Scale Score	State Mean Scale Score	% Level_1	% Level_2	% Level_3	% Level_4	% Level_5	% Met/ Exceeded Expectation	State % Met/Exceeded Expectation
Schoolwide	57	761	744	11%	14%	14%	47%	14%	61%	44%
White	19	757	753	16%	5%	26%	42%	11%	53%	55%
African American	-	-	725	-	-	-	-	-	-	26%
Hispanic	-	-	727	-	-	-	-	-	-	26%
American Indian	-	-	738	-	-	-	-	-	-	40%
Asian	28	774	769	4%	11%	7%	57%	21%	79%	70%
Two or More Races	-	-	751	-	-	-	-	-	-	53%
Students with Disability	-	-	718	-	-	-	-	-	-	24%
English Language Learners	-	-	709	-	-	-	-	-	-	11%
Economically Disadvantaged Students	-	-	724	-	-	-	-	-	-	24%

ACADEMIC ACHIEVEMENT

**BERGEN
FORT LEE BORO**

GRADE SPAN PK-06

PARCC ELA Performance Distribution - Grade - 04

This table presents the grade level outcomes, as measured by PARCC, in all five performance levels for all subgroups. PARCC consists of five performance levels: Level 1 - Did not yet meet grade-level expectations, Level 2 -Partially met expectations, Level 3 - Approached expectations, Level 4 - Met expectations, and Level 5 - Exceeded expectations.

Subgroup	Valid Scores	Mean Scale Score	State Mean Scale Score	% Level_1	% Level_2	% Level_3	% Level_4	% Level_5	% Met/ Exceeded Expectation	State % Met/Exceeded Expectation
Schoolwide	53	763	751	4%	17%	21%	32%	26%	58%	52%
White	14	754	758	7%	29%	21%	21%	21%	43%	63%
African American	-	-	733	-	-	-	-	-	-	30%
Hispanic	-	-	737	-	-	-	-	-	-	35%
American Indian	-	-	746	-	-	-	-	-	-	52%
Asian	26	778	773	0%	12%	15%	38%	35%	73%	78%
Two or More Races	-	-	760	-	-	-	-	-	-	62%
Students with Disability	-	-	725	-	-	-	-	-	-	25%
English Language Learners	-	-	717	-	-	-	-	-	-	15%
Economically Disadvantaged Students	14	745	734	7%	14%	36%	29%	14%	43%	31%

ACADEMIC ACHIEVEMENT

**BERGEN
FORT LEE BORO**

GRADE SPAN PK-06

PARCC ELA Performance Distribution - Grade - 05

This table presents the grade level outcomes, as measured by PARCC, in all five performance levels for all subgroups. PARCC consists of five performance levels: Level 1 - Did not yet meet grade-level expectations, Level 2 -Partially met expectations, Level 3 - Approached expectations, Level 4 - Met expectations, and Level 5 - Exceeded expectations.

Subgroup	Valid Scores	Mean Scale Score	State Mean Scale Score	% Level_1	% Level_2	% Level_3	% Level_4	% Level_5	% Met/ Exceeded Expectation	State % Met/Exceeded Expectation
Schoolwide	65	763	751	3%	14%	17%	48%	18%	66%	53%
White	23	768	757	0%	4%	22%	52%	22%	74%	62%
African American	-	-	734	-	-	-	-	-	-	31%
Hispanic	-	-	737	-	-	-	-	-	-	35%
American Indian	-	-	746	-	-	-	-	-	-	45%
Asian	32	766	771	3%	16%	13%	50%	19%	69%	77%
Two or More Races	-	-	758	-	-	-	-	-	-	61%
Students with Disability	-	-	723	-	-	-	-	-	-	21%
English Language Learners	-	-	717	-	-	-	-	-	-	15%
Economically Disadvantaged Students	13	756	734	8%	15%	8%	62%	8%	69%	31%

ACADEMIC ACHIEVEMENT

**BERGEN
FORT LEE BORO**

GRADE SPAN PK-06

PARCC ELA Performance Distribution - Grade - 06

This table presents the grade level outcomes, as measured by PARCC, in all five performance levels for all subgroups. PARCC consists of five performance levels: Level 1 - Did not yet meet grade-level expectations, Level 2 -Partially met expectations, Level 3 - Approached expectations, Level 4 - Met expectations, and Level 5 - Exceeded expectations.

Subgroup	Valid Scores	Mean Scale Score	State Mean Scale Score	% Level_1	% Level_2	% Level_3	% Level_4	% Level_5	% Met/ Exceeded Expectation	State % Met/Exceeded Expectation
Schoolwide	56	767	749	4%	11%	18%	38%	30%	68%	50%
White	18	768	755	0%	11%	22%	33%	33%	67%	59%
African American	-	-	732	-	-	-	-	-	-	29%
Hispanic	11	729	736	18%	18%	45%	18%	0%	18%	34%
American Indian	-	-	743	-	-	-	-	-	-	39%
Asian	26	783	770	0%	8%	0%	50%	42%	92%	77%
Two or More Races	-	-	753	-	-	-	-	-	-	57%
Students with Disability	-	-	718	-	-	-	-	-	-	17%
English Language Learners	-	-	711	-	-	-	-	-	-	11%
Economically Disadvantaged Students	18	744	733	11%	11%	33%	33%	11%	44%	30%

ACADEMIC ACHIEVEMENT

**BERGEN
FORT LEE BORO**

GRADE SPAN PK-06

PARCC MATH - Performance Distribution - Grade - 03

This table presents the grade level outcomes, as measured by PARCC, in all five performance levels for all subgroups. PARCC consists of five performance levels: Level 1 - Did not yet meet grade-level expectations, Level 2 -Partially met expectations, Level 3 - Approached expectations, Level 4 - Met expectations, and Level 5 - Exceeded expectations.

Subgroup	Valid Scores	Mean Scale Score	State Mean Scale Score	% Level_1	% Level_2	% Level_3	% Level_4	% Level_5	% Met/ Exceeded Expectation	State % Met/Exceeded Expectation
Schoolwide	57	761	746	2%	18%	12%	47%	21%	68%	46%
White	19	754	752	0%	21%	21%	37%	21%	58%	56%
African American	-	-	728	-	-	-	-	-	-	25%
Hispanic	-	-	733	-	-	-	-	-	-	28%
American Indian	-	-	742	-	-	-	-	-	-	41%
Asian	28	775	772	0%	11%	4%	57%	29%	86%	77%
Two or More Races	-	-	751	-	-	-	-	-	-	54%
Students with Disability	-	-	727	-	-	-	-	-	-	27%
English Language Learners	-	-	724	-	-	-	-	-	-	17%
Economically Disadvantaged Students	-	-	730	-	-	-	-	-	-	26%

ACADEMIC ACHIEVEMENT

**BERGEN
FORT LEE BORO**

GRADE SPAN PK-06

PARCC MATH - Performance Distribution - Grade - 04

This table presents the grade level outcomes, as measured by PARCC, in all five performance levels for all subgroups. PARCC consists of five performance levels: Level 1 - Did not yet meet grade-level expectations, Level 2 -Partially met expectations, Level 3 - Approached expectations, Level 4 - Met expectations, and Level 5 - Exceeded expectations.

Subgroup	Valid Scores	Mean Scale Score	State Mean Scale Score	% Level_1	% Level_2	% Level_3	% Level_4	% Level_5	% Met/ Exceeded Expectation	State % Met/Exceeded Expectation
Schoolwide	53	754	744	6%	19%	23%	42%	11%	53%	42%
White	14	746	749	14%	14%	21%	43%	7%	50%	50%
African American	-	-	727	-	-	-	-	-	-	20%
Hispanic	-	-	732	-	-	-	-	-	-	26%
American Indian	-	-	740	-	-	-	-	-	-	40%
Asian	26	772	769	0%	15%	15%	50%	19%	69%	75%
Two or More Races	-	-	750	-	-	-	-	-	-	52%
Students with Disability	-	-	724	-	-	-	-	-	-	21%
English Language Learners	-	-	722	-	-	-	-	-	-	15%
Economically Disadvantaged Students	14	739	730	7%	21%	29%	43%	0%	43%	23%

ACADEMIC ACHIEVEMENT

**BERGEN
FORT LEE BORO**

GRADE SPAN PK-06

PARCC MATH - Performance Distribution - Grade - 05

This table presents the grade level outcomes, as measured by PARCC, in all five performance levels for all subgroups. PARCC consists of five performance levels: Level 1 - Did not yet meet grade-level expectations, Level 2 -Partially met expectations, Level 3 - Approached expectations, Level 4 - Met expectations, and Level 5 - Exceeded expectations.

Subgroup	Valid Scores	Mean Scale Score	State Mean Scale Score	% Level_1	% Level_2	% Level_3	% Level_4	% Level_5	% Met/ Exceeded Expectation	State % Met/Exceeded Expectation
Schoolwide	67	754	744	1%	21%	22%	42%	13%	55%	42%
White	23	754	749	0%	9%	39%	48%	4%	52%	49%
African American	-	-	728	-	-	-	-	-	-	21%
Hispanic	-	-	733	-	-	-	-	-	-	26%
American Indian	-	-	745	-	-	-	-	-	-	46%
Asian	34	762	768	3%	18%	15%	44%	21%	65%	74%
Two or More Races	-	-	749	-	-	-	-	-	-	50%
Students with Disability	-	-	724	-	-	-	-	-	-	19%
English Language Learners	-	-	724	-	-	-	-	-	-	17%
Economically Disadvantaged Students	13	744	731	0%	31%	23%	38%	8%	46%	23%

ACADEMIC ACHIEVEMENT

**BERGEN
FORT LEE BORO**

GRADE SPAN PK-06

PARCC MATH - Performance Distribution - Grade - 06

This table presents the grade level outcomes, as measured by PARCC, in all five performance levels for all subgroups. PARCC consists of five performance levels: Level 1 - Did not yet meet grade-level expectations, Level 2 -Partially met expectations, Level 3 - Approached expectations, Level 4 - Met expectations, and Level 5 - Exceeded expectations.

Subgroup	Valid Scores	Mean Scale Score	State Mean Scale Score	% Level_1	% Level_2	% Level_3	% Level_4	% Level_5	% Met/ Exceeded Expectation	State % Met/Exceeded Expectation
Schoolwide	55	756	743	0%	20%	18%	45%	16%	62%	42%
White	18	754	749	0%	17%	28%	33%	22%	56%	50%
African American	-	-	726	-	-	-	-	-	-	19%
Hispanic	-	-	731	-	-	-	-	-	-	25%
American Indian	-	-	740	-	-	-	-	-	-	35%
Asian	26	771	768	0%	0%	15%	65%	19%	85%	75%
Two or More Races	-	-	745	-	-	-	-	-	-	44%
Students with Disability	-	-	718	-	-	-	-	-	-	15%
English Language Learners	-	-	718	-	-	-	-	-	-	14%
Economically Disadvantaged Students	17	737	729	0%	35%	35%	24%	6%	29%	23%

2015 National Assessment Educational Progress (NAEP)

The National Assessment of Educational Progress (NAEP) is the largest national assessment of what our nation's students know and can do. NAEP assesses fourth-, eighth-, and twelfth-grade students in subjects such as reading, mathematics, science, and writing. The reporting of NAEP scores on state report cards is a federal mandate. The results of NAEP are also published as the Nation's Report Card, and are available for the nation, states, and, in some cases, urban districts. The NAEP scores on the report card include grades four and eight 2015 reading and math scores for New Jersey which are the last scores published.

For subgroup outcomes, visit:

- Reading Grade 4 <http://www.nj.gov/education/pr/1415/naep/naep4read.html>
- Reading Grade 8 <http://www.nj.gov/education/pr/1415/naep/naep8read.html>
- Math Grade 4 <http://www.nj.gov/education/pr/1415/naep/naep4math.html>
- Math Grade 8 <http://www.nj.gov/education/pr/1415/naep/naep8math.html>

For more information, visit <http://nces.ed.gov/nationsreportcard/>

Proficiency Percentages

Subject	Grade	State/Nation	Below Basic	Basic	Proficient	Advanced
Reading	Grade 4	State (NJ)	25	33	31	12
	Grade 4	Nation	31	33	27	9
	Grade 8	State (NJ)	20	39	35	6
	Grade 8	Nation	24	42	31	4
Math	Grade 4	State (NJ)	14	39	38	9
	Grade 4	Nation	18	42	33	7
	Grade 8	State (NJ)	21	32	30	16
	Grade 8	Nation	29	38	25	8

ACADEMIC ACHIEVEMENT

**BERGEN
FORT LEE BORO**

GRADE SPAN PK-06

NJASK Results - Science Grade Level - 04

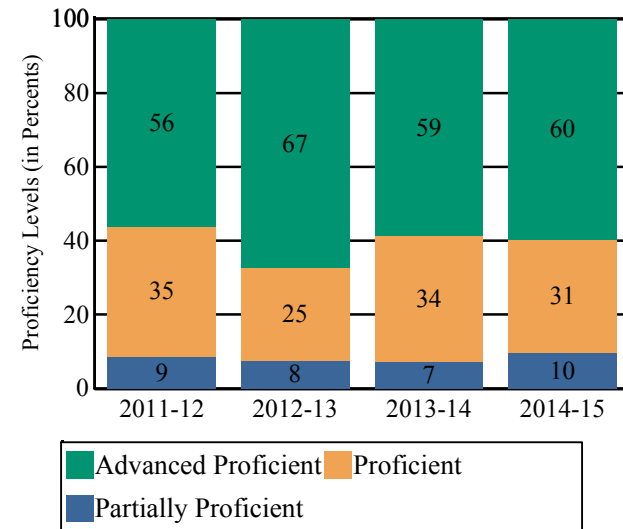
This table presents the grade level proficiency results, as measured by NJASK, in Advanced Proficient, Proficient, and Partially Proficient categories for all appropriate subgroups.

Subgroups	Advanced Proficient	Proficient	Partially Proficient
Schoolwide	60%	31%	10%
White	53%	27%	20%
African American	-	-	-
Hispanic	-	-	-
American Indian	-	-	-
Asian	62%	31%	8%
Two or More Races	-	-	-
Students with Disability	-	-	-
English Language Learners	-	-	-
Economically Disadvantaged Students	57%	29%	14%

Data is presented for subgroups when the count is high enough under ESEA Waiver suppression rules.

NJASK Proficiency Trends - Science - Grade Level - 04

This graph presents the grade level outcomes in the categories of Advanced Proficient, Proficient, and Partially Proficient over the last four years.



COLLEGE AND CAREER READINESS

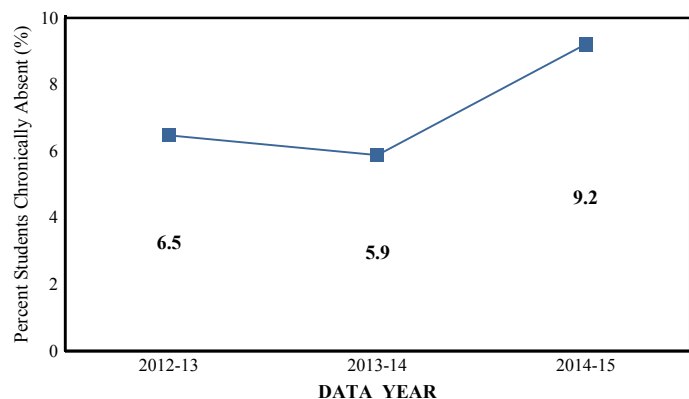
**BERGEN
FORT LEE BORO**

GRADE SPAN PK-06

Students in both elementary and middle schools begin to demonstrate college readiness behaviors long before they even enter high school. Among the behaviors that research has shown to be indicative of successfully graduating high school is regularly attending school. For all elementary schools, this includes the percentage of students that are chronically absent each year, defined as missing more than 10% of possible school days.

Chronic Absenteeism Trend

This graph presents the percentage of the enrolled students who were chronically absent for the past three years.

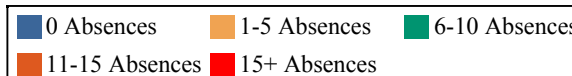
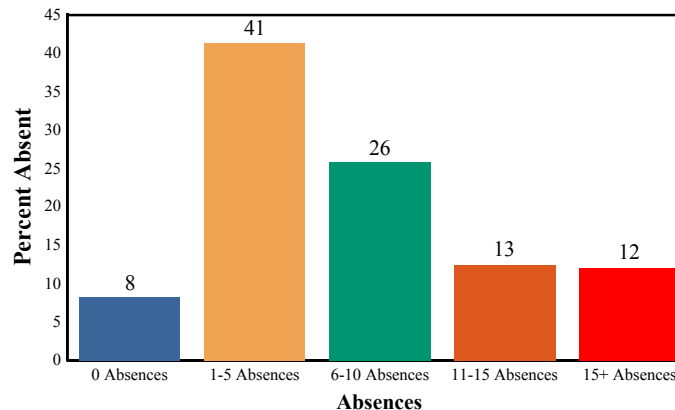


Chronic Absenteeism for 2014-15

9.22%

Absenteeism

The chart below presents the percentage of students who were absent in each category of absence: 0 absences, 1- 5 absences, 6 - 10 absences, 11 - 15 absences, and more than 15 absences. An absence is defined as being ‘not present’ and includes the days missed regardless of whether they were determined to be excused or unexcused by the school.



STUDENT GROWTH

BERGEN

GRADE SPAN PK-06

FORT LEE BORO

This section of the performance report presents data about student growth, utilizing the Student Growth Percentile Methodology (SGP). SGP creates a measure of how students progressed in grades 4 through 8 in Language Arts Literacy and in grades 4 through 7 in Math when compared to other students with a similar test score history. A short video explaining the methodology can be found here: <http://www.state.nj.us/education/njsmart/performance/>

The below chart consist of five columns with measures. The first column - Schoolwide Performance - presents the schoolwide median growth score in either English Language Arts/Literacy or Mathematics for all students in the school. The second column - Peer Percentile - indicates how the school's growth performance compares to its group of peer schools. The third column - Statewide Percentile - indicates how a school compares to schools across the state. The last column - Met Target? - indicates whether the school's performance met or exceeded the statewide target, which was set to 35.

The fourth row presents the averages of the peer school percentiles, the averages of statewide percentiles, the percentage of statewide targets met.

Student Growth Indicators	Schoolwide Performance	Peer Percentile	Statewide Percentile	Statewide Target	Met Target?
Student Growth on Language Arts	56	80	67	35	YES
Student Growth on Math	59	69	72	35	YES
		75	70		100%

Student Growth

This table presents for all students with growth scores the interaction between their performance on PARCC and their growth scores. For example, in the top left cell the percentage of students who are both in Level 1 - Did not yet meet expectations AND also demonstrating low growth is displayed.

Language Arts

(Expectations)	GROWTH		
	Low	Typical	High
Did Not Yet Meet	3%	1%	0%
Partially Met	4%	4%	2%
Approached	9%	6%	3%
Met	11%	14%	16%
Exceeded	0%	4%	23%

Math

(Expectations)	GROWTH		
	Low	Typical	High
Did Not Yet Meet	1%	1%	0%
Partially Met	10%	4%	6%
Approached	6%	10%	4%
Met	8%	17%	21%
Exceeded	0%	1%	12%

Low Growth is defined as an **Student Growth Percentile** score less than 35.

Typical Growth is defined as an **Student Growth Percentile** score between 35 and 65.

High Growth is defined as a **Student Growth Percentile** score higher than 65.

WITHIN SCHOOL ACHIEVEMENT GAP

BERGEN

FORT LEE BORO

GRADE SPAN PK-06

This section of the performance report presents data about the achievement gap that exists within a school - as measured by the difference between the students' scale scores at the 25th and 75th percentile in the school, the Interquartile Range (IQR). Taken together with an understanding of the overall and average achievement levels in the school, the IQR furthers an understanding of the range of student outcomes that exist in a school. A school gap smaller than the state gap indicates that the school's range of student outcomes is narrower than the state's while a school gap larger than the state gap indicates that the school's range of student outcomes is broader than the state's.

Grade Level - 03

PARCC Language Arts 25th %ile vs 75th%ile

This table presents the scale scores associated with students at the bottom (0th percentile), the 25th percentile, the 50th percentile, the 75th percentile and the top (99th percentile) of school's distribution.

Percentile	School Scale Score	State Scale Score
99th	848	850
75th	789	770
50th	765	743
25th	724	715
0th	650	650

	Scale Score Gap - School	Scale Score Gap - State
25th vs 75th Gap	65	55

Grade Level - 03

PARCC MATH 25th %ile vs 75th%ile

This table presents the scale scores associated with students at the bottom (0th percentile), the 25th percentile, the 50th percentile, the 75th percentile and the top (99th percentile) of school's distribution.

Percentile	School Scale Score	State Scale Score
99th	821	850
75th	777	767
50th	765	745
25th	734	722
0th	698	650

	Scale Score Gap - School	Scale Score Gap - State
25th vs 75th Gap	43	45

WITHIN SCHOOL ACHIEVEMENT GAP

BERGEN

FORT LEE BORO

GRADE SPAN PK-06

Grade Level - 04

PARCC Language Arts 25th %ile vs 75th%ile

This table presents the scale scores associated with students at the bottom (0th percentile), the 25th percentile, the 50th percentile, the 75th percentile and the top (99th percentile) of school's distribution.

Percentile	School Scale Score	State Scale Score
99th	836	850
75th	790	773
50th	761	750
25th	732	728
0th	667	650

	Scale Score Gap - School	Scale Score Gap - State
25th vs 75th Gap	58	45

Grade Level - 05

PARCC Language Arts 25th %ile vs 75th%ile

This table presents the scale scores associated with students at the bottom (0th percentile), the 25th percentile, the 50th percentile, the 75th percentile and the top (99th percentile) of school's distribution.

Percentile	School Scale Score	State Scale Score
99th	833	850
75th	785	773
50th	766	751
25th	731	728
0th	671	650

	Scale Score Gap - School	Scale Score Gap - State
25th vs 75th Gap	54	45

Grade Level - 04

PARCC MATH 25th %ile vs 75th%ile

This table presents the scale scores associated with students at the bottom (0th percentile), the 25th percentile, the 50th percentile, the 75th percentile and the top (99th percentile) of school's distribution.

Percentile	School Scale Score	State Scale Score
99th	831	850
75th	780	764
50th	752	742
25th	725	721
0th	686	650

	Scale Score Gap - School	Scale Score Gap - State
25th vs 75th Gap	55	43

Grade Level - 05

PARCC MATH 25th %ile vs 75th%ile

This table presents the scale scores associated with students at the bottom (0th percentile), the 25th percentile, the 50th percentile, the 75th percentile and the top (99th percentile) of school's distribution.

Percentile	School Scale Score	State Scale Score
99th	809	850
75th	783	763
50th	754	743
25th	726	723
0th	676	650

	Scale Score Gap - School	Scale Score Gap - State
25th vs 75th Gap	57	40

WITHIN SCHOOL ACHIEVEMENT GAP

BERGEN

FORT LEE BORO

GRADE SPAN PK-06

Grade Level - 06

PARCC Language Arts 25th %ile vs 75th%ile

This table presents the scale scores associated with students at the bottom (0th percentile), the 25th percentile, the 50th percentile, the 75th percentile and the top (99th percentile) of school's distribution.

Percentile	School Scale Score	State Scale Score
99th	830	850
75th	793	770
50th	768	749
25th	734	726
0th	682	650

	Scale Score Gap - School	Scale Score Gap - State
25th vs 75th Gap	59	44

Grade Level - 06

PARCC MATH 25th %ile vs 75th%ile

This table presents the scale scores associated with students at the bottom (0th percentile), the 25th percentile, the 50th percentile, the 75th percentile and the top (99th percentile) of school's distribution.

Percentile	School Scale Score	State Scale Score
99th	806	850
75th	782	763
50th	758	742
25th	729	721
0th	700	650

	Scale Score Gap - School	Scale Score Gap - State
25th vs 75th Gap	53	42

Length of School Day

This table presents the amount of time a school is in session for a typical student on a normal school day.

	School
2014-15	6 Hrs. 20 Mins.

Student Suspension Rate

This table presents the percentage of students who were suspended one or more times during the school year.

	School
2014-15	0.4%

Instructional Time

This table presents the amount of time that a typical student is engaged in instructional activities under the supervision of a certified teacher.

2014-15	School
Full Time	5 Hrs. 30 Mins.
Shared Time	0 Hrs. 0 Mins.

Student Expulsions

This table presents the number of students who were expelled from the school and district during the school year.

	School
2014-15	0

Student to Staff Ratio

This table presents the count of students per faculty member or administrator in the school. All staff are counted in full-time equivalents.

2014-15	School
Faculty	13
Administrators	470

SCHOOL PEER GROUP

**BERGEN
FORT LEE BORO**

GRADE SPAN PK-06

This table presents the list of peer schools in alphabetical order by county name that was created specifically for this school (highlighted in yellow). Peer schools are drawn from across the state and represent schools that have similar grade configurations and that are educating students of similar demographic characteristics, as measured by enrollment in Free/Reduced Lunch Programs, Limited English Proficiency or Special Education Programs.

<u>COUNTY NAME</u>	<u>DISTRICT NAME</u>	<u>SCHOOL NAME</u>	<u>CDS CODE</u>	<u>GRADES PAN</u>	<u>ECONOMICALLY DISADVANTAGED</u>	<u>ENGLISH LANGUAGE LEARNERS</u>	<u>SPECIAL EDUCATION</u>
ATLANTIC	MARGATE CITY	WILLIAM H. ROSS III SCHOOL	01-3020-025	PK-04	10.1%	0%	14.1%
BERGEN	FAIR LAWN BORO	WESTMORELAND ELEMENTARY SCHOOL	03-1450-160	PK-05	17.5%	7.5%	12.9%
BERGEN	FORT LEE BORO	SCHOOL NO. 2	03-1550-070	PK-06	18.5%	8.7%	13.5%
BERGEN	LEONIA BORO	ANNA C. SCOTT ELEMENTARY SCHOOL	03-2620-060	PK-05	13.6%	6.4%	11.3%
BERGEN	MAHWAH TWP	JOYCE KILMER SCHOOL	03-2900-075	04-05	12.2%	1.8%	13.8%
BERGEN	MAHWAH TWP	LENAPE MEADOWS	03-2900-065	PK-03	15.5%	7.3%	10.6%
BERGEN	SADDLE BROOK TWP	SALOME H. LONG MEMORIAL SCHOOL	03-4610-090	KG-06	13.3%	1.4%	15.7%
BERGEN	WOOD-RIDGE BORO	CATHERINE E. DOYLE ELEMENTARY SCHOOL	03-5830-060	PK-03	13.1%	0.3%	17.8%
BURLINGTON	MOUNT LAUREL TWP	COUNTRYSIDE ELEMENTARY SCHOOL	05-3440-010	PK-04	13.7%	3.7%	14.2%
BURLINGTON	TABERNACLE TWP	TABERNACLE ELEMENTARY SCHOOL	05-5130-060	PK-04	11.8%	1.2%	14%
CAMDEN	CHERRY HILL TWP	JAMES F. COOPER ELEMENTARY SCHOOL	07-0800-083	KG-05	17.9%	1.5%	23.7%
CAMDEN	HADDON TWP	VAN SCIVER ELEMENTARY SCHOOL	07-1890-100	PK-05	16.4%	2.7%	19.4%
CAPE MAY	UPPER TWP	UPPER TOWNSHIP ELEMENTARY SCHOOL	09-5340-050	03-05	14.5%	0.2%	20.9%
GLOUCESTER	PITMAN BORO	ELWOOD KINDLE ELEMENTARY SCHOOL	15-4140-060	PK-05	10.6%	0%	15.4%
GLOUCESTER	SWEDESBORO-WOOLWICH	WALTER HILL SCHOOL	15-5120-060	06	13%	0.8%	17%
HUNTERDON	FLEMINGTON-RARITAN REG	READING-FLEMING INTERMEDIATE SCHOOL	19-1510-040	05-06	14.7%	0.8%	19.4%
MERCER	HAMILTON TWP	UNIVERSITY HEIGHTS ELEMENTARY SCHOOL	21-1950-250	PK-05	20.3%	1.4%	26.3%
MERCER	PRINCETON REGIONAL	RIVERSIDE SCHOOL	21-4255-090	PK-05	17.8%	5.2%	18.4%
MONMOUTH	FREEHOLD TWP	C. RICHARD APPELEGATE SCHOOL	25-1660-021	KG-05	10%	0.2%	15%
MONMOUTH	HOWELL TWP	ALDRICH ELEMENTARY SCHOOL	25-2290-005	KG-05	10.8%	0.2%	15.2%

SCHOOL PEER GROUP

**BERGEN
FORT LEE BORO**

GRADE SPAN PK-06

MORRIS	LINCOLN PARK BORO	LINCOLN PARK ELEMENTARY SCHOOL	27-2650-035	PK-04	18.8%	9%	13.2%
MORRIS	PARSIPPANY-TROY HILLS TWP	LAKE HIAWATHA ELEMENTARY SCHOOL	27-3950-070	PK-05	17.4%	8%	12.5%
MORRIS	ROCKAWAY TWP	CATHERINE A DWYER ELEMENTARY SCHOOL	27-4490-019	KG-05	18.6%	9.4%	12.6%
OCEAN	ISLAND HEIGHTS BORO	ISLAND HEIGHTS ELEMENTARY SCHOOL	29-2350-050	KG-06	11.8%	0%	16.8%
PASSAIC	POMPTON LAKES BORO	LINCOLN SCHOOL	31-4230-070	PK-05	19.2%	5%	19.6%
PASSAIC	WEST MILFORD TWP	APSHAWA ELEMENTARY SCHOOL	31-5650-042	KG-06	16.5%	4.2%	16.9%
PASSAIC	WEST MILFORD TWP	PARADISE KNOLL ELEMENTARY SCHOOL	31-5650-080	KG-06	11.1%	0%	14.8%
UNION	SPRINGFIELD TWP	JAMES CALDWELL ELEMENTARY SCHOOL	39-5000-070	03-05	13.5%	3.7%	12.6%
UNION	SUMMIT CITY	WASHINGTON ELEMENTARY SCHOOL	39-5090-120	01-05	13.6%	5.9%	11.8%
UNION	UNION TWP	WASHINGTON	39-5290-140	PK-04	16.9%	9.1%	10%
WARREN	FRELINGHUYSEN TWP	FRELINGHUYSEN TOWNSHIP ELEMENTARY SCHOOL	41-1670-050	PK-06	12.1%	0%	16.2%