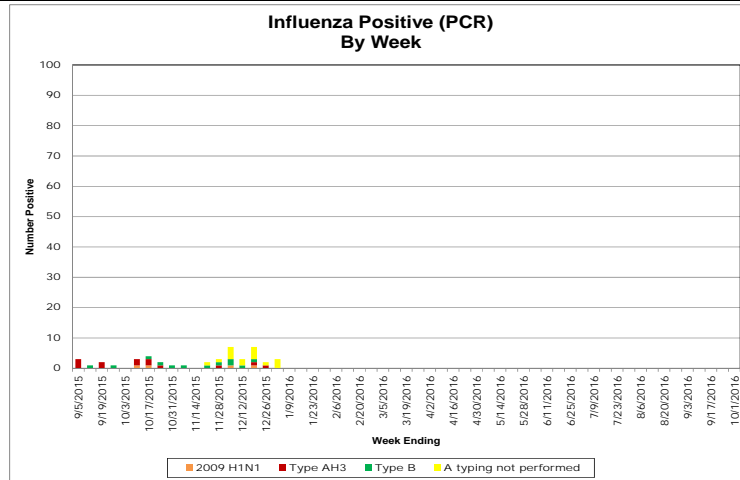


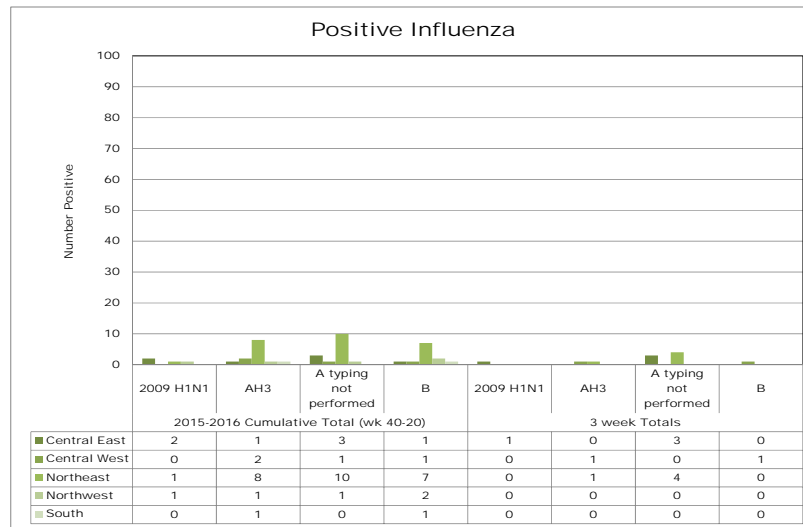
Report also available at: <http://nj.gov/health/flu/fluinfo.shtml>

# Virologic Surveillance<sup>7</sup>

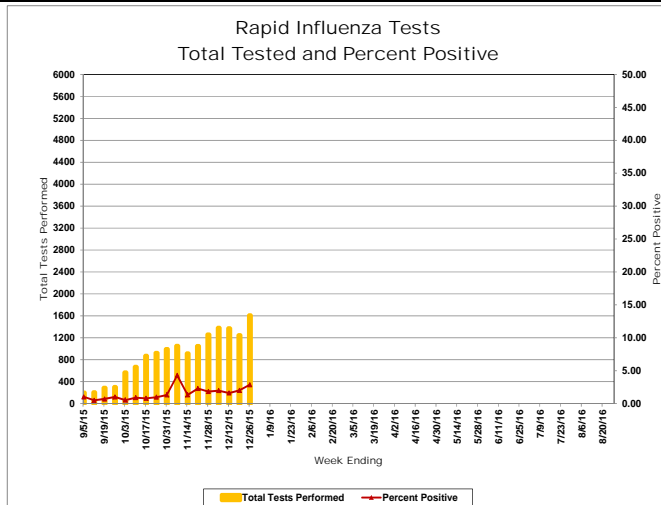
## Influenza Positive Specimens (PCR) - Result by Week



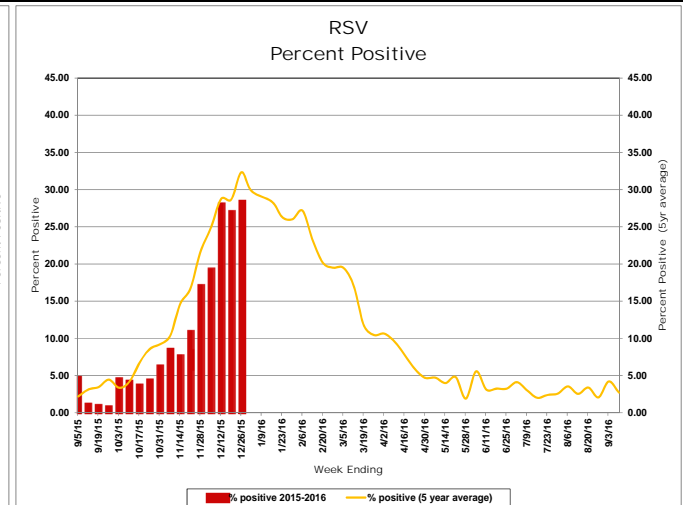
## Influenza Positive Specimens (PCR)- Result by Region<sup>3</sup>



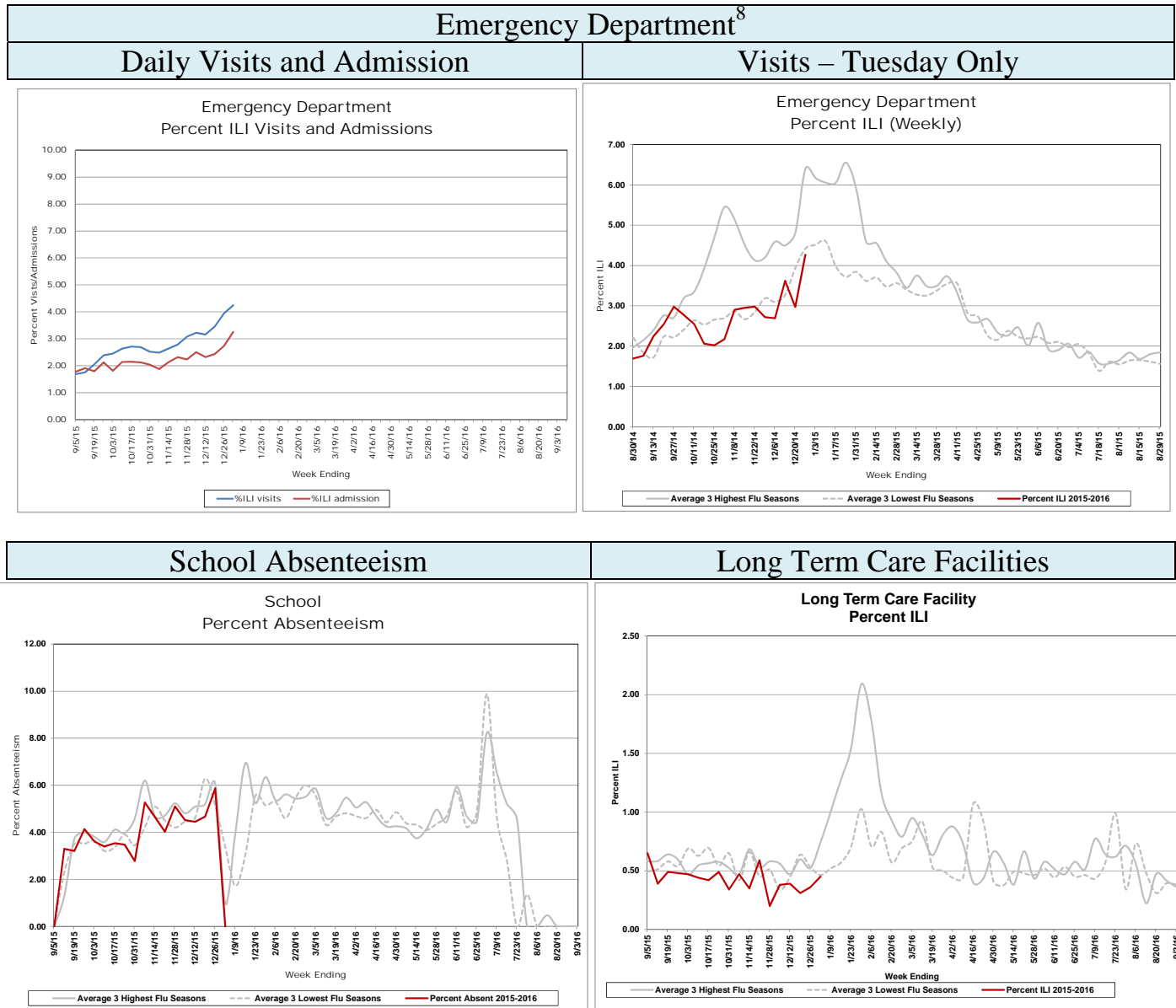
## Influenza Rapid Antigen Result by Week



## Respiratory Syncytial Virus (RSV) Results by Week



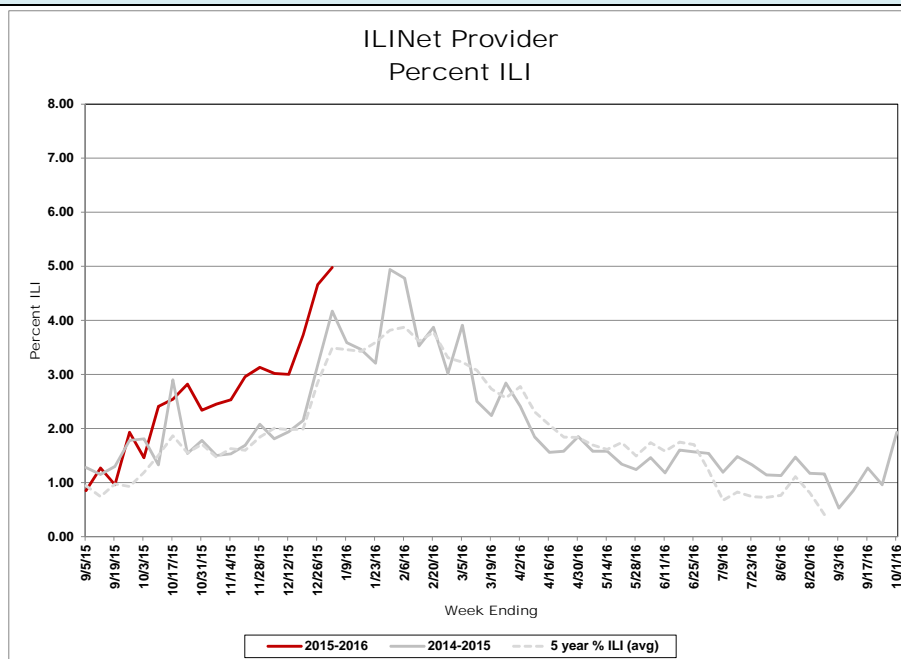
## Influenza-like Illness Surveillance



## Respiratory Outbreaks in Long Term Care Facilities<sup>9</sup>

Cumulative outbreaks 2015-2016 season	3
No. outbreaks last 3 weeks	0
Regions with recent outbreaks	N/A

## ILINet Providers



## Pediatric Influenza Mortality<sup>10</sup>

Influenza season	Number of Pediatric Influenza Deaths Reported to CDC	
	NJ	US (includes NJ)
2010-2011	4	123
2011-2012	1	35
2012-2013	7	171
2013-2014	6	108
2014-2015	1	146
2015-2016	0	4

For additional information regarding influenza surveillance please visit the following websites.

<http://nj.gov/health/flu/surveillance.shtml>

<http://www.cdc.gov/flu/>

Footnotes:

1. This report represents activity occurring in New Jersey related to influenza and RSV. In addition, reports of other circulating respiratory viruses or regarding illness severity (i.e., hospitalization) will be included when available.
2. Activity levels for the state and region are defined in Table 1 and 2 at the end of this document.
3. The following is a breakdown of counties contained within each public health region: Northwest: Morris, Passaic, Sussex, Warren; Northeast: Bergen, Essex, Hudson; Central west: Hunterdon, Mercer, Somerset; Central East: Middlesex, Monmouth, Ocean, Union; South: Atlantic, Burlington, Camden, Cape May, Salem, Cumberland, Gloucester
4. Influenza-like illness (ILI) is defined as fever ( $> 100^{\circ}\text{F}$  [ $37.8^{\circ}\text{C}$ ], oral or equivalent) and cough and/or sore throat (in the absence of a known cause other than influenza). For long term care facilities, fever is defined as  $2^{\circ}$  above baseline temperature.
5. Non-season baseline is calculated by taking the average of statewide percentages of ILI for a 10 year (2006, 2007, 2008, 2009, 2010, 2011, 2012, 2013, 2014 and 2015) period during months when influenza is less likely to be circulating (May-August).
6. Three year seasonal averages are determined by calculating the average percent ILI/absenteeism for each influenza season (October to May). These averages are ranked and the three highest and lowest overall season averages were selected. The three highest and lowest numbers were then averaged to obtain a single high and single low value. The season which contribute to the high and low value vary by entity type and are as follows : LTCF (High: 09-10, 12-13, 14-15; Low: 10-11,11-12,13-14), ED (High:09-10, 12-13, 14-15; Low: 10-11, 11-12,13-14 ) and schools (High: 09-10, 10-11, 12-13; Low: 11-12,13-14, 14-15). A week by week average was also calculated using the average of the seasons listed above for each entity type.
7. Viral activity: Real-time polymerase chain reaction (PCR) results are obtained from electronic laboratory transmission submitted by acute care, commercial and public health laboratories to CDRSS. Rapid influenza test data and respiratory syncytial virus data are acquired from facilities reporting rapid influenza tests via the National Respiratory and Enteric Virus Surveillance System (NREVSS) or CDRSS ILI module. Counts for cumulative totals begin with week ending October 10, 2015. Three week count data includes current week and two prior weeks. Data presented for RSV and rapid influenza testing represent information for the week prior to the current report week.
8. Daily visits and admissions associated with ILI from emergency department data is collected via EpiCenter and Hippocrates. Prior to these systems, data on ILI visits were only recorded one day per week usually on Tuesday. This system is maintained as a large amount of historical data allows for better seasonal comparisons.
9. Only LTCF outbreaks reported to NJDOH that receive an outbreak number are recorded in this report.
10. Data presented for New Jersey are for cases confirmed as of the current reporting week. Data presented for the United States represent data reported for the prior MMWR week. This data can be viewed at: <http://www.cdc.gov/flu/weekly/>.

<b>Table 1</b> <b>Influenza Activity Level – Definitions for State Activity</b>				
<b><u>NJ Level</u></b>	<b><u>CSTE Level</u></b>	<b><u>Definition</u></b>		
		<b><u>ILI Activity/Outbreaks</u></b>		<b><u>Lab Activity</u></b>
Low	No Activity	ILI activity at or below baseline AND no detected outbreaks	AND	No lab confirmed cases
	Sporadic	Low ILI activity detected OR one lab confirmed outbreaks anywhere in the state	AND	Sporadic isolation of laboratory confirmed influenza
Moderate	Local	Increase in ILI activity OR two or more lab confirmed outbreaks in one public health region (Other regions not experiencing increased ILI activity)	AND	Recent (within 3 weeks) laboratory activity in the region with increased ILI
	Regional	Increase in ILI activity OR two or more lab confirmed outbreaks in at least 2 public health regions (Other regions not experiencing increased ILI activity)	AND	Recent (within 3 weeks) laboratory activity in the region with increased ILI
High	Widespread	Increase in ILI activity OR two or more lab confirmed outbreaks in > 2 public health regions	AND	Recent (within 3 weeks) laboratory activity in the region with increased ILI

<b>Table 2</b> <b>Influenza Activity Level – Definitions for Public Health Regions</b>			
<b><u>NJ Level</u></b>	<b><u>Definition</u></b>		
	<b><u>ILI Activity/Outbreaks</u></b>		<b><u>Lab Activity</u></b>
Low	Low ILI activity detected OR one lab confirmed outbreaks anywhere in the region	AND	Sporadic isolation of laboratory confirmed influenza anywhere in the region
Moderate	Increased ILI activity in less than half of the counties in the region OR two lab confirmed outbreaks in the public health region	AND	Recent (within 3 weeks) laboratory activity in same counties of the region with increased ILI
High	Increased ILI activity in more than half of the counties in the region OR three or more lab confirmed outbreaks in the region	AND	Recent (within 3 weeks) laboratory activity in more than half of the counties in the region with increased ILI

*Notes:*

ILI activity: Systems used to detect increases in ILI activity include: ILINet (i.e., sentinel providers), school absenteeism data, ED ILI visits and admissions collected via Hippocrates and EpiCenter systems, LTCF ILI data, LTCF outbreak data, and information on influenza mortality (122 city, influenza associated death report).

Lab Activity: Virologic surveillance data from PHEL and commercial laboratories will be used as the primary data source for the above levels. However, rapid influenza test data will also be considered when determining the appropriate activity levels.

## INFLUENZA LABORATORY REPORTS BY COUNTY

**Counts represent total positive specimens  
from week ending October 10, 2015 to current MMWR week**

**Source: CDRSS**

Frequency	COUNTY(COUNTY)	RESULT				
		Influenza A - Typing not performed	Influenza A 2009 H1N1	Influenza AH3	Influenza B	Total
	ATLANTIC	11	0	0	0	11
	BERGEN	11	1	7	7	26
	BURLINGTON	3	0	1	5	9
	CAMDEN	5	0	0	5	10
	ESSEX	6	0	1	2	9
	GLOUCESTER	0	0	0	1	1
	HUDSON	2	0	0	2	4
	HUNTERDON	0	0	1	1	2
	MERCER	3	0	1	0	4
	MIDDLESEX	1	1	0	1	3
	MONMOUTH	21	0	0	10	31
	MORRIS	0	0	0	1	1
	OCEAN	12	0	1	1	14
	PASSAIC	2	1	1	1	5
	SOMERSET	2	0	0	0	2
	UNION	3	1	0	0	4
	Total	82	4	13	37	136

## INFLUENZA LABORATORY REPORTS BY REGION

Counts represent total positive specimens  
from week ending October 10, 2015 to current MMWR week

Source: CDRSS

Frequency	Table of REGION by RESULT					
	REGION	RESULT				
		Influenza A - Typing not performed	Influenza A 2009 H1N1	Influenza AH3	Influenza B	Total
	Central East	37	2	1	12	52
	Central West	5	0	2	1	8
	Northeast	19	1	8	11	39
	Northwest	2	1	1	2	6
	South	19	0	1	11	31
Total	82	4	13	37	136	

*The following is a breakdown of counties contained within each public health region:*  
*Northwest: Morris, Passaic, Sussex, Warren; Northeast: Bergen, Essex, Hudson*  
*Central west: Hunterdon, Mercer, Somerset*  
*Central East: Middlesex, Monmouth, Ocean, Union*  
*South: Atlantic, Burlington, Camden, Cape May, Salem, Cumberland, Gloucester*



**SURVEILLANCE DATE: 12/29/2015**

COUNTY	Long Term Care			Schools			Hospital Emergency Dept		
	# Enrolled	# Reports Rec'd	% ILI	# Enrolled	# Reports Rec'd	% Absent	# Enrolled	# Reports Rec'd	% ILI
<b>December 29, 2015 MMWR WEEK null</b>									
ATLANTIC	6	3	0.97	41	0	0.00	4	4	2.85
BERGEN	4	2	0.00	34	1	0.00	5	5	5.20
BURLINGTON	6	2	0.00	79	0	0.00	4	4	4.57
CAMDEN	0	0	0.00	1	0	0.00	7	7	4.90
CAPE MAY	3	0	0.00	14	0	0.00	1	1	1.90
CUMBERLAND	5	0	0.00	11	0	0.00	3	3	6.17
ESSEX	2	1	0.00	4	0	0.00	8	7	3.81
GLOUCESTER	3	1	1.45	4	0	0.00	2	2	3.49
HUDSON	4	1	0.00	13	0	0.00	6	6	4.15
HUNTERDON	4	3	1.11	8	0	0.00	1	1	2.27
MERCER	3	0	0.00	21	0	0.00	5	4	2.82
MIDDLESEX	4	2	0.00	21	1	0.00	6	6	6.01
MONMOUTH	5	2	2.60	16	0	0.00	5	5	5.26
MORRIS	0	0	0.00	7	0	0.00	4	4	1.31
OCEAN	1	0	0.00	5	0	0.00	4	4	4.75
PASSAIC	6	5	0.60	24	0	0.00	3	3	5.52
SALEM	0	0	0.00	3	0	0.00	1	1	1.89
SOMERSET	3	1	0.00	22	0	0.00	1	1	2.53
SUSSEX	2	2	0.00	5	0	0.00	2	2	0.00
UNION	1	0	0.00	47	0	0.00	5	5	3.32
WARREN	4	1	0.00	21	0	0.00	2	2	3.31
<b>NW Region</b>	<b>12</b>	<b>8</b>	<b>0.30</b>	<b>57</b>	<b>0</b>	<b>0.00</b>	<b>11</b>	<b>11</b>	<b>3.26</b>
<b>NE Region</b>	<b>10</b>	<b>4</b>	<b>0.00</b>	<b>51</b>	<b>1</b>	<b>0.00</b>	<b>19</b>	<b>18</b>	<b>4.36</b>
<b>CW Region</b>	<b>10</b>	<b>4</b>	<b>0.80</b>	<b>51</b>	<b>0</b>	<b>0.00</b>	<b>7</b>	<b>6</b>	<b>2.69</b>
<b>CE Region</b>	<b>11</b>	<b>4</b>	<b>1.05</b>	<b>89</b>	<b>1</b>	<b>0.00</b>	<b>20</b>	<b>20</b>	<b>5.03</b>
<b>South Region</b>	<b>23</b>	<b>6</b>	<b>0.56</b>	<b>153</b>	<b>0</b>	<b>0.00</b>	<b>22</b>	<b>22</b>	<b>4.26</b>
<b>State Total</b>	<b>66</b>	<b>26</b>	<b>0.45</b>	<b>401</b>	<b>2</b>	<b>0.00</b>	<b>79</b>	<b>77</b>	<b>4.27</b>

# NJ ACTIVE INFLUENZA-LIKE ILLNESS SURVEILLANCE STATISTICS

## SURVEILLANCE DATE: 12/29/2015



County	RSV Tests		Rapid Flu Tests		
	# Positive	Total Tests Performed	# Positive	Total Tests Performed	
December 29, 2015 MMWR WEEK null					
ATLANTIC	10	34	1	76	
BERGEN	3	16	1	68	
BURLINGTON	3	4	0	0	
CAMDEN	2	18	2	156	
CAPE MAY	2	8	0	24	
CUMBERLAND	7	9	0	0	
ESSEX	63	176	7	326	
GLOUCESTER	4	32	9	121	
HUDSON	10	41	5	75	
HUNTERDON	7	15	0	55	
MERCER	2	10	4	40	
MIDDLESEX	3	11	2	55	
MONMOUTH	45	137	7	424	
MORRIS	6	96	0	0	
OCEAN	11	24	2	135	
PASSAIC	4	5	5	23	
SALEM	0	0	0	0	
SOMERSET	0	0	0	0	
SUSSEX	0	0	0	0	
UNION	28	108	0	2	
WARREN	1	3	1	24	
<b>NW Region</b>	11	104	6	47	
<b>NE Region</b>	76	233	13	469	
<b>CW Region</b>	9	25	4	95	
<b>CE Region</b>	87	280	11	616	
<b>South Region</b>	28	105	12	377	
<b>State Total</b>	211	747	46	1604	