



# Respiratory Virus Surveillance Report<sup>1</sup>


New Jersey Department of Health  
Communicable Disease Service



Week ending April 2, 2016 (MMWR week 13)

## SYNOPSIS

Influenza Activity Level <sup>2</sup>	
State Activity Week ending 4/2: <b>HIGH</b>	
Current week Last year: <b>MODERATE</b>	
Regional <sup>3</sup> Data	
Northwest	<b>HIGH</b>
Northeast	<b>HIGH</b>
Central West	<b>HIGH</b>
Central East	<b>HIGH</b>
South	<b>HIGH</b>



ILI Activity <sup>4</sup>				
	Percent ILI/Absenteeism			Baselines
	Current week (range by county)	Last week Current year	Current week Last year	Non-season <sup>5</sup> Season <sup>6</sup> (3 low, 3 high)
Long Term Care Facilities	0.42 (0.00, 1.08)	0.50	0.66	0.58 (0.60, 0.77)
Schools (absenteeism)	4.11 (0.00, 11.70)	4.91	4.61	3.56 (4.49, 4.85)
Emergency Departments	4.25 (1.20, 6.59)	4.81	3.54	2.39 (3.21, 4.20)

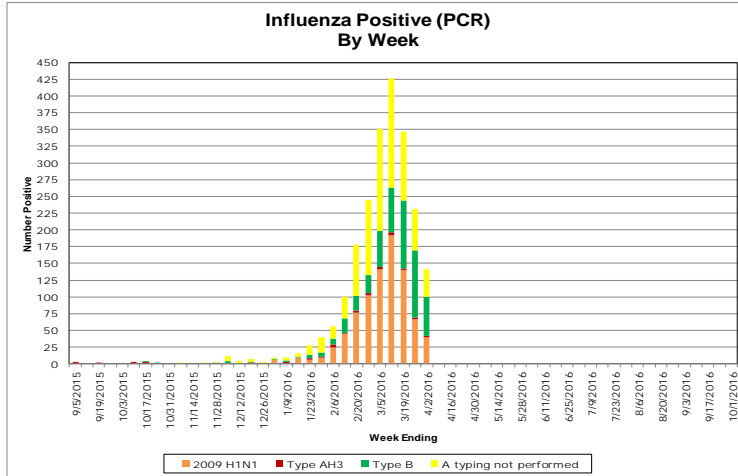
Viral Activity <sup>7</sup>			
	Current Week	Past 3 Weeks	Cumulative Total
Influenza H1N1 (2009)	40	247	864
Influenza H3N2	2	6	40
Influenza B	58	260	488
Respiratory Syncytial Virus (RSV)	67	176	3160
Rapid Influenza Tests	587	2326	5099

ILINet Providers			
Current Week		Previous Week	
#of reporters	%ILI	#of reporters	%ILI
13	4.86	22	6.60

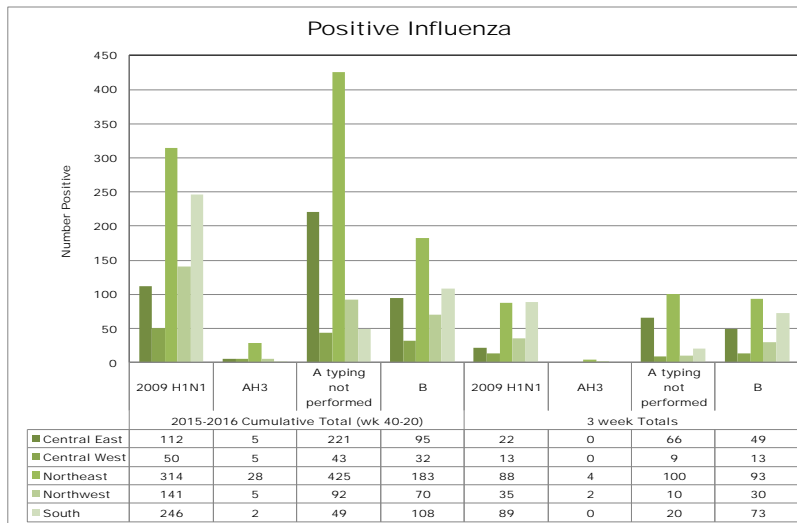
Report also available at: <http://nj.gov/health/flu/fluinfo.shtml>

# Virologic Surveillance<sup>7</sup>

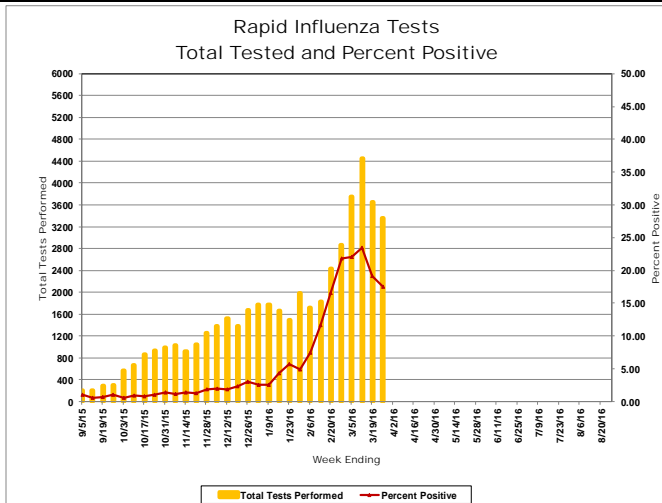
## Influenza Positive Specimens (PCR) - Result by Week



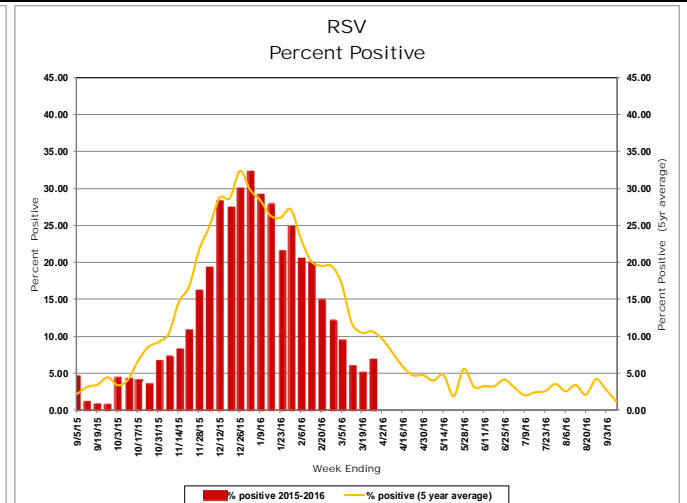
## Influenza Positive Specimens (PCR)- Result by Region<sup>3</sup>



## Influenza Rapid Antigen Result by Week



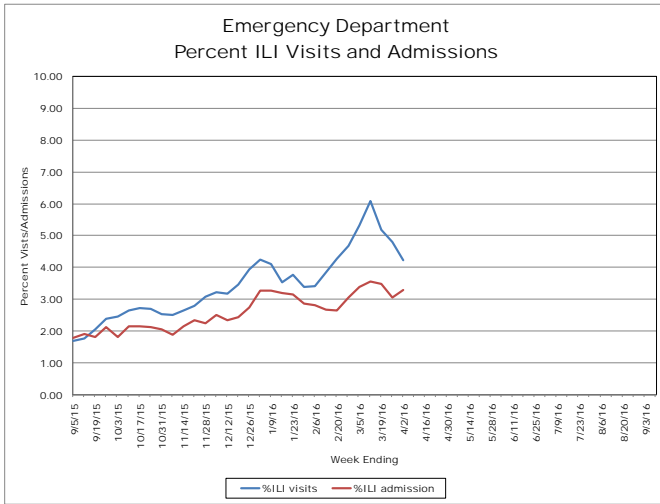
## Respiratory Syncytial Virus (RSV) Results by Week



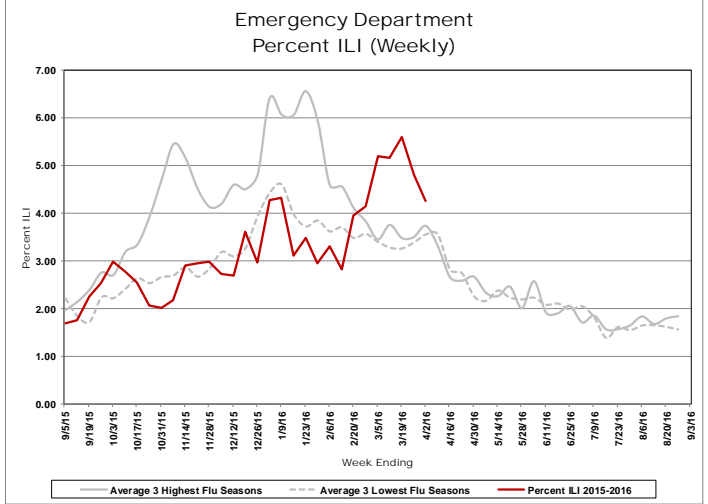
## Influenza-like Illness Surveillance

### Emergency Department<sup>8</sup>

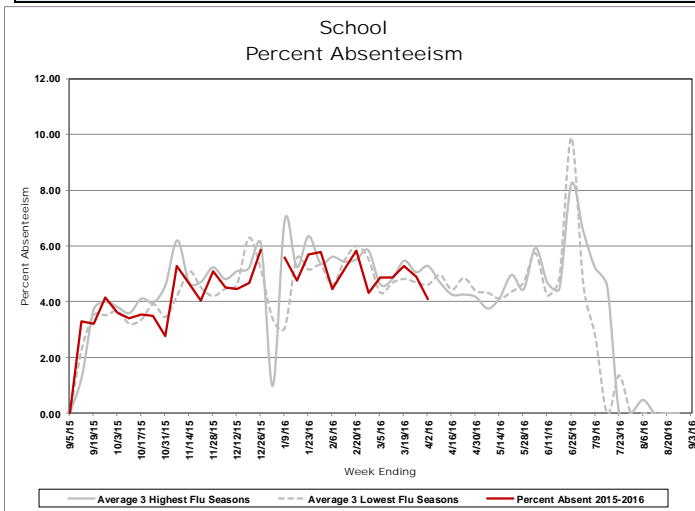
#### Daily Visits and Admission



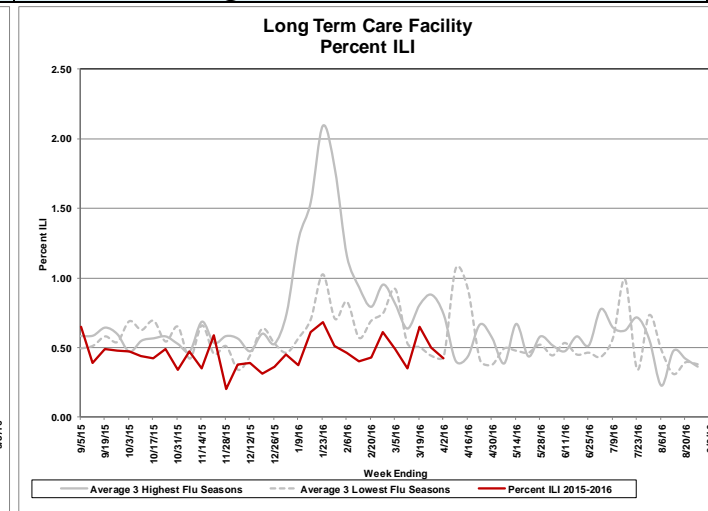
#### Visits – Tuesday Only



#### School Absenteeism



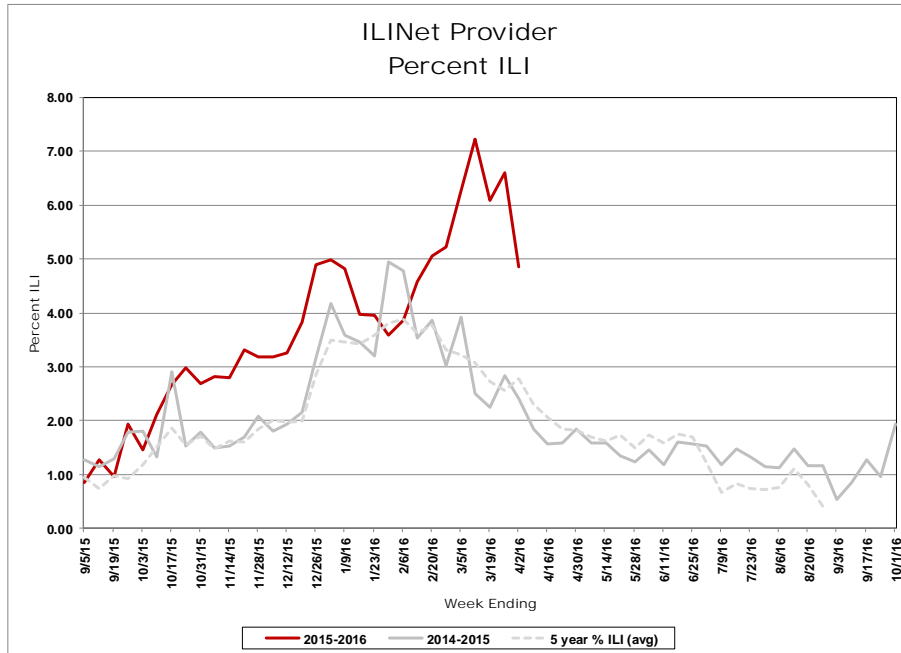
#### Long Term Care Facilities



### Respiratory Outbreaks in Long Term Care Facilities<sup>9</sup>

<b>Cumulative outbreaks 2015-2016 season</b>	18
<b>No. outbreaks last 3 weeks</b>	4
<b>Regions with recent outbreaks</b>	CE,CW,NE,S

## ILINet Providers



## Pediatric Influenza Mortality<sup>10</sup>

Influenza season	Number of Pediatric Influenza Deaths Reported to CDC	
	NJ	US (includes NJ)
2010-2011	4	123
2011-2012	1	35
2012-2013	7	171
2013-2014	6	108
2014-2015	1	146
2015-2016	0	33

For additional information regarding influenza surveillance please visit the following websites.

<http://nj.gov/health/flu/surveillance.shtml>

<http://www.cdc.gov/flu/>

Footnotes:

1. This report represents activity occurring in New Jersey related to influenza and RSV. In addition, reports of other circulating respiratory viruses or regarding illness severity (i.e., hospitalization) will be included when available.
2. Activity levels for the state and region are defined in Table 1 and 2 at the end of this document.
3. The following is a breakdown of counties contained within each public health region: Northwest: Morris, Passaic, Sussex, Warren; Northeast: Bergen, Essex, Hudson; Central west: Hunterdon, Mercer, Somerset; Central East: Middlesex, Monmouth, Ocean, Union; South: Atlantic, Burlington, Camden, Cape May, Salem, Cumberland, Gloucester
4. Influenza-like illness (ILI) is defined as fever ( $> 100^{\circ}\text{F}$  [ $37.8^{\circ}\text{C}$ ], oral or equivalent) and cough and/or sore throat (in the absence of a known cause other than influenza). For long term care facilities, fever is defined as  $2^{\circ}$  above baseline temperature.
5. Non-season baseline is calculated by taking the average of statewide percentages of ILI for a 10 year (2006, 2007, 2008, 2009, 2010, 2011, 2012, 2013, 2014 and 2015) period during months when influenza is less likely to be circulating (May-August).
6. Three year seasonal averages are determined by calculating the average percent ILI/absenteeism for each influenza season (October to May). These averages are ranked and the three highest and lowest overall season averages were selected. The three highest and lowest numbers were then averaged to obtain a single high and single low value. The season which contribute to the high and low value vary by entity type and are as follows : LTCF (High: 09-10, 12-13, 14-15; Low: 10-11,11-12,13-14), ED (High:09-10, 12-13, 14-15; Low: 10-11, 11-12,13-14 ) and schools (High: 09-10, 10-11, 12-13; Low: 11-12,13-14, 14-15). A week by week average was also calculated using the average of the seasons listed above for each entity type.
7. Viral activity: Real-time polymerase chain reaction (PCR) results are obtained from electronic laboratory transmission submitted by acute care, commercial and public health laboratories to CDRSS. Rapid influenza test data and respiratory syncytial virus data are acquired from facilities reporting rapid influenza tests via the National Respiratory and Enteric Virus Surveillance System (NREVSS) or CDRSS ILI module. Counts for cumulative totals begin with week ending October 10, 2015. Three week count data includes current week and two prior weeks. Data presented for RSV and rapid influenza testing represent information for the week prior to the current report week.
8. Daily visits and admissions associated with ILI from emergency department data is collected via EpiCenter and Hippocrates. Prior to these systems, data on ILI visits were only recorded one day per week usually on Tuesday. This system is maintained as a large amount of historical data allows for better seasonal comparisons.
9. Only LTCF outbreaks reported to NJDOH that receive an outbreak number are recorded in this report.
10. Data presented for New Jersey are for cases confirmed as of the current reporting week. Data presented for the United States represent data reported for the prior MMWR week. This data can be viewed at: <http://www.cdc.gov/flu/weekly/>.

<b>Table 1</b>				
<b>Influenza Activity Level – Definitions for State Activity</b>				
<b><u>NJ Level</u></b>	<b><u>CSTE Level</u></b>	<b><u>Definition</u></b>		
		<b><u>ILI Activity/Outbreaks</u></b>		<b><u>Lab Activity</u></b>
Low	No Activity	ILI activity at or below baseline AND no detected outbreaks	AND	No lab confirmed cases
	Sporadic	Low ILI activity detected OR one lab confirmed outbreaks anywhere in the state	AND	Sporadic isolation of laboratory confirmed influenza
Moderate	Local	Increase in ILI activity OR two or more lab confirmed outbreaks in one public health region (Other regions not experiencing increased ILI activity)	AND	Recent (within 3 weeks) laboratory activity in the region with increased ILI
	Regional	Increase in ILI activity OR two or more lab confirmed outbreaks in at least 2 public health regions (Other regions not experiencing increased ILI activity)	AND	Recent (within 3 weeks) laboratory activity in the region with increased ILI
High	Widespread	Increase in ILI activity OR two or more lab confirmed outbreaks in > 2 public health regions	AND	Recent (within 3 weeks) laboratory activity in the region with increased ILI

<b>Table 2</b>			
<b>Influenza Activity Level – Definitions for Public Health Regions</b>			
<b><u>NJ Level</u></b>	<b><u>Definition</u></b>		
	<b><u>ILI Activity/Outbreaks</u></b>		<b><u>Lab Activity</u></b>
Low	Low ILI activity detected OR one lab confirmed outbreaks anywhere in the region	AND	Sporadic isolation of laboratory confirmed influenza anywhere in the region
Moderate	Increased ILI activity in less than half of the counties in the region OR two lab confirmed outbreaks in the public health region	AND	Recent (within 3 weeks) laboratory activity in same counties of the region with increased ILI
High	Increased ILI activity in more than half of the counties in the region OR three or more lab confirmed outbreaks in the region	AND	Recent (within 3 weeks) laboratory activity in more than half of the counties in the region with increased ILI

*Notes:*

ILI activity: Systems used to detect increases in ILI activity include: ILINet (i.e., sentinel providers), school absenteeism data, ED ILI visits and admissions collected via Hippocrates and EpiCenter systems, LTCF ILI data, LTCF outbreak data, and information on influenza mortality (122 city, influenza associated death report).

Lab Activity: Virologic surveillance data from PHEL and commercial laboratories will be used as the primary data source for the above levels. However, rapid influenza test data will also be considered when determining the appropriate activity levels.

## INFLUENZA LABORATORY REPORTS BY COUNTY

**Counts represent total positive specimens  
from week ending October 10, 2015 to current MMWR week**

**Source: CDRSS**

Frequency	COUNTY(COUNTY)	RESULT				Total
		Influenza A - Typing not performed	Influenza A 2009 H1N1	Influenza AH3	Influenza B	
	ATLANTIC	202	14	1	47	264
	BERGEN	468	216	20	171	875
	BURLINGTON	121	111	1	85	318
	CAMDEN	171	92	0	114	377
	CAPE MAY	14	3	0	3	20
	CUMBERLAND	8	1	0	1	10
	ESSEX	180	38	5	48	271
	GLOUCESTER	12	24	0	14	50
	HUDSON	118	65	3	73	259
	HUNTERDON	12	23	2	5	42
	MERCER	136	16	4	68	224
	MIDDLESEX	123	42	4	73	242
	MONMOUTH	383	7	0	153	543
	MORRIS	77	19	0	43	139
	OCEAN	219	10	1	147	377
	PASSAIC	158	95	2	80	335
	SALEM	3	2	0	0	5
	SOMERSET	34	13	1	10	58
	SUSSEX	19	4	1	8	32
	UNION	213	53	0	37	303
	WARREN	5	23	2	9	39
	<b>Total</b>	<b>2676</b>	<b>871</b>	<b>47</b>	<b>1189</b>	<b>4783</b>

## INFLUENZA LABORATORY REPORTS BY REGION

**Counts represent total positive specimens  
from week ending October 10, 2015 to current MMWR week**

**Source: CDRSS**

Frequency	Table of REGION by RESULT					
REGION	RESULT					Total
	Influenza A - Typing not performed	Influenza A 2009 H1N1	Influenza AH3	Influenza B		
Central East	938	112	5	410	1465	
Central West	182	52	7	83	324	
Northeast	766	319	28	292	1405	
Northwest	259	141	5	140	545	
South	531	247	2	264	1044	
<b>Total</b>	<b>2676</b>	<b>871</b>	<b>47</b>	<b>1189</b>	<b>4783</b>	

*The following is a breakdown of counties contained within each public health region:  
 Northwest: Morris, Passaic, Sussex, Warren; Northeast: Bergen, Essex, Hudson  
 Central west: Hunterdon, Mercer, Somerset  
 Central East: Middlesex, Monmouth, Ocean, Union  
 South: Atlantic, Burlington, Camden, Cape May, Salem, Cumberland, Gloucester*



## SURVEILLANCE DATE: 03/29/2016



COUNTY	Long Term Care			Schools			Hospital Emergency Dept		
	# Enrolled	# Reports Rec'd	% ILI	# Enrolled	# Reports Rec'd	% Absent	# Enrolled	# Reports Rec'd	% ILI
<b>March 29, 2016 MMWR WEEK 13</b>									
ATLANTIC	6	0	0.00	42	4	11.14	4	4	1.27
BERGEN	4	2	0.00	34	22	3.63	5	5	2.56
BURLINGTON	6	2	0.00	79	6	8.10	4	4	6.59
CAMDEN	0	0	0.00	1	0	0.00	7	7	6.00
CAPE MAY	3	0	0.00	14	0	0.00	1	1	3.37
CUMBERLAND	5	5	1.08	11	0	0.00	3	3	4.15
ESSEX	2	1	0.00	4	4	3.43	8	7	4.33
GLOUCESTER	3	1	0.00	4	1	8.68	2	2	1.60
HUDSON	4	2	0.52	13	1	6.23	6	6	4.28
HUNTERDON	4	3	0.54	8	0	0.00	1	1	4.29
MERCER	3	0	0.00	22	4	3.83	5	4	5.91
MIDDLESEX	4	2	0.00	21	12	3.85	6	6	4.31
MONMOUTH	5	2	0.00	16	0	0.00	5	5	3.67
MORRIS	0	0	0.00	9	6	2.64	4	4	3.23
OCEAN	1	0	0.00	5	0	0.00	4	4	5.55
PASSAIC	7	4	0.74	26	12	2.14	3	3	6.11
SALEM	0	0	0.00	3	1	11.70	1	1	1.20
SOMERSET	3	2	0.00	22	14	3.74	1	1	5.97
SUSSEX	2	1	0.00	5	1	0.00	2	2	1.92
UNION	1	0	0.00	49	20	3.82	5	4	2.85
WARREN	4	1	0.00	20	1	5.16	2	2	5.26
<b>NW Region</b>	<b>13</b>	<b>6</b>	<b>0.59</b>	<b>60</b>	<b>20</b>	<b>2.33</b>	<b>11</b>	<b>11</b>	<b>4.71</b>
<b>NE Region</b>	<b>10</b>	<b>5</b>	<b>0.17</b>	<b>51</b>	<b>27</b>	<b>3.90</b>	<b>19</b>	<b>18</b>	<b>3.81</b>
<b>CW Region</b>	<b>10</b>	<b>5</b>	<b>0.32</b>	<b>52</b>	<b>18</b>	<b>3.75</b>	<b>7</b>	<b>6</b>	<b>5.76</b>
<b>CE Region</b>	<b>11</b>	<b>4</b>	<b>0.00</b>	<b>91</b>	<b>32</b>	<b>3.83</b>	<b>20</b>	<b>19</b>	<b>4.10</b>
<b>South Region</b>	<b>23</b>	<b>8</b>	<b>0.76</b>	<b>154</b>	<b>12</b>	<b>9.58</b>	<b>22</b>	<b>22</b>	<b>4.26</b>
<b>State Total</b>	<b>67</b>	<b>28</b>	<b>0.42</b>	<b>408</b>	<b>109</b>	<b>4.11</b>	<b>79</b>	<b>76</b>	<b>4.25</b>

**SURVEILLANCE DATE: 03/29/2016**



County	RSV Tests		Rapid Flu Tests	
	# Positive	Total Tests Performed	# Positive	Total Tests Performed
March 29, 2016 MMWR WEEK 13				
ATLANTIC	3	30	61	246
BERGEN	4	45	83	345
BURLINGTON	0	0	0	0
CAMDEN	1	16	69	593
CAPE MAY	0	8	5	51
CUMBERLAND	0	5	0	0
ESSEX	8	124	60	551
GLOUCESTER	37	166	0	6
HUDSON	1	7	4	28
HUNTERDON	1	11	14	82
MERCER	0	2	22	108
MIDDLESEX	1	58	11	94
MONMOUTH	5	100	117	681
MORRIS	2	202	3	17
OCEAN	0	11	67	276
PASSAIC	0	27	71	257
SALEM	0	0	0	0
SOMERSET	0	0	0	0
SUSSEX	0	0	0	0
UNION	4	171	0	15
WARREN	0	0	0	0
<b>NW Region</b>	2	229	74	274
<b>NE Region</b>	13	176	147	924
<b>CW Region</b>	1	13	36	190
<b>CE Region</b>	10	340	195	1066
<b>South Region</b>	41	225	135	896
<b>State Total</b>	67	983	587	3350