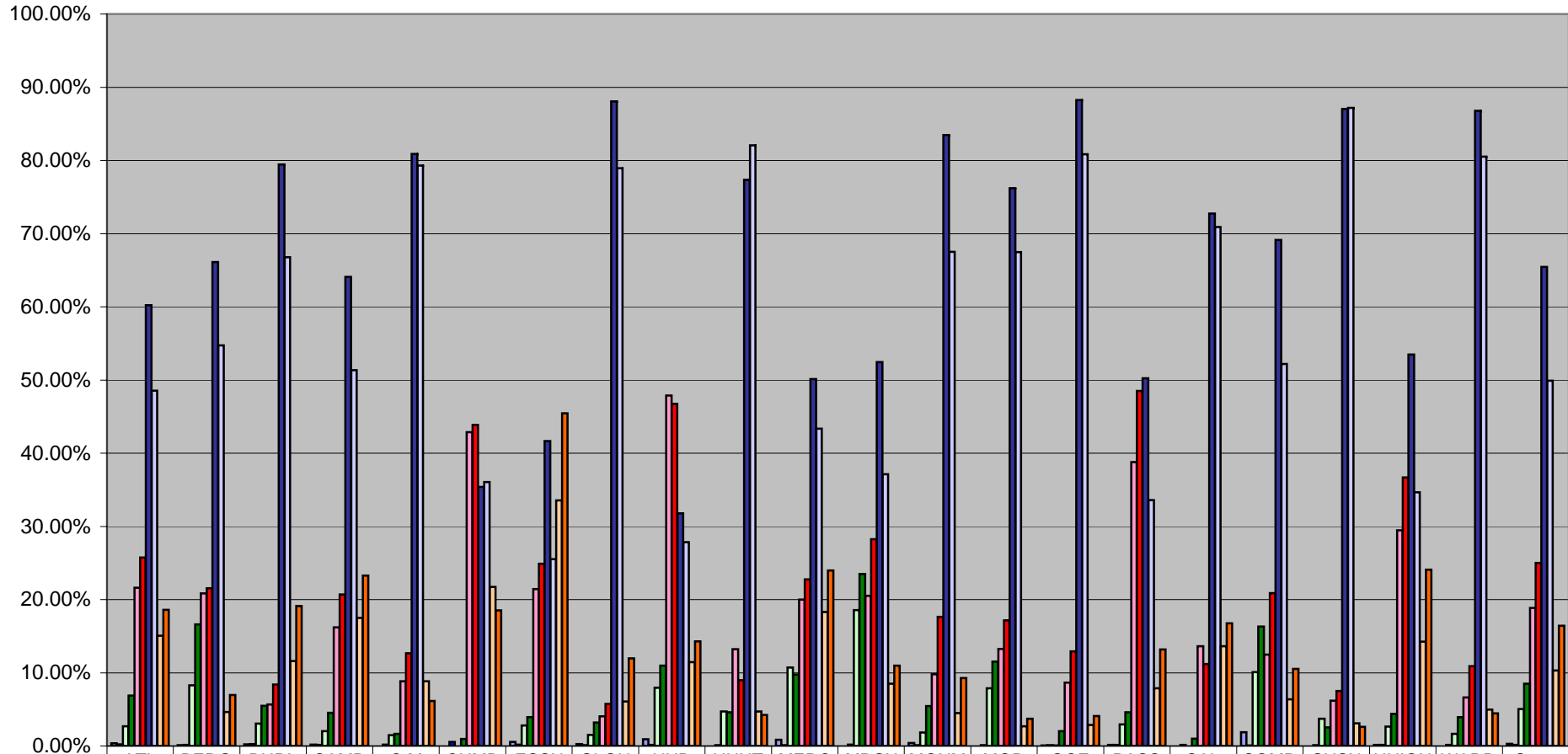


**NJEIS Dec 1 2007 Child Count
Race Percentage Compared to 2007 Census 0<3 yrs by County (Ind #6)**



	ATL	BERG	BURL	CAMD	C M	CUMB	ESSX	GLOU	HUD	HUNT	MERC	MDSX	MONM	MOR	OCE	PASS	SAL	SOMR	SUSX	UNION	WARR	State
Amer Indian/ Alaskan Native	0.39%	0.11%	0.24%	0.18%	0.00%	0.00%	0.56%	0.25%	0.93%	0.00%	0.85%	0.00%	0.40%	0.00%	0.09%	0.15%	0.00%	1.86%	0.00%	0.17%	0.00%	0.31%
Aml/AN Census	0.22%	0.14%	0.24%	0.16%	0.18%	0.57%	0.18%	0.12%	0.15%	0.10%	0.10%	0.17%	0.13%	0.11%	0.10%	0.14%	0.14%	0.07%	0.13%	0.14%	0.16%	0.16%
Asian/ Pacific Islander	2.70%	8.28%	3.07%	2.03%	1.47%	0.00%	2.79%	1.52%	7.94%	4.72%	10.70%	18.55%	1.85%	7.87%	0.09%	2.94%	0.00%	10.11%	3.70%	2.65%	1.65%	5.06%
Asian/PI Census	6.88%	16.62%	5.48%	4.53%	1.66%	0.96%	3.95%	3.20%	10.97%	4.61%	9.78%	23.49%	5.44%	11.52%	2.02%	4.60%	1.00%	16.32%	2.54%	4.40%	3.94%	8.50%
Hispanic	21.62%	20.86%	5.67%	16.21%	8.82%	42.86%	21.45%	4.06%	47.90%	13.21%	20.00%	20.50%	9.79%	13.25%	8.67%	38.79%	13.64%	12.50%	6.17%	29.47%	6.61%	18.86%
Hisp Census	25.74%	21.53%	8.39%	20.69%	12.68%	43.87%	24.88%	5.75%	46.73%	8.99%	22.77%	28.26%	17.64%	17.18%	12.93%	48.50%	11.19%	20.90%	7.52%	36.68%	10.92%	25.01%
White/ Not Hisp	60.23%	66.10%	79.43%	64.09%	80.88%	35.40%	41.64%	88.07%	31.78%	77.36%	50.14%	52.44%	83.47%	76.19%	88.27%	50.23%	72.73%	69.15%	87.04%	53.48%	86.78%	65.46%
White/Not Hisp Census	48.55%	54.73%	66.77%	51.35%	79.31%	36.07%	25.54%	78.94%	27.85%	82.08%	43.36%	37.13%	67.52%	67.48%	80.85%	33.58%	70.91%	52.19%	87.18%	34.67%	80.51%	49.91%
African Amer/ Not Hisp	15.06%	4.65%	11.58%	17.50%	8.82%	21.74%	33.57%	6.09%	11.45%	4.72%	18.31%	8.51%	4.50%	2.69%	2.89%	7.88%	13.64%	6.38%	3.09%	14.24%	4.96%	10.31%
Af Am/Not Hisp Census	18.61%	6.98%	19.12%	23.27%	6.16%	18.53%	45.45%	11.98%	14.30%	4.22%	23.99%	10.96%	9.28%	3.72%	4.10%	13.18%	16.76%	10.52%	2.63%	24.10%	4.47%	16.43%