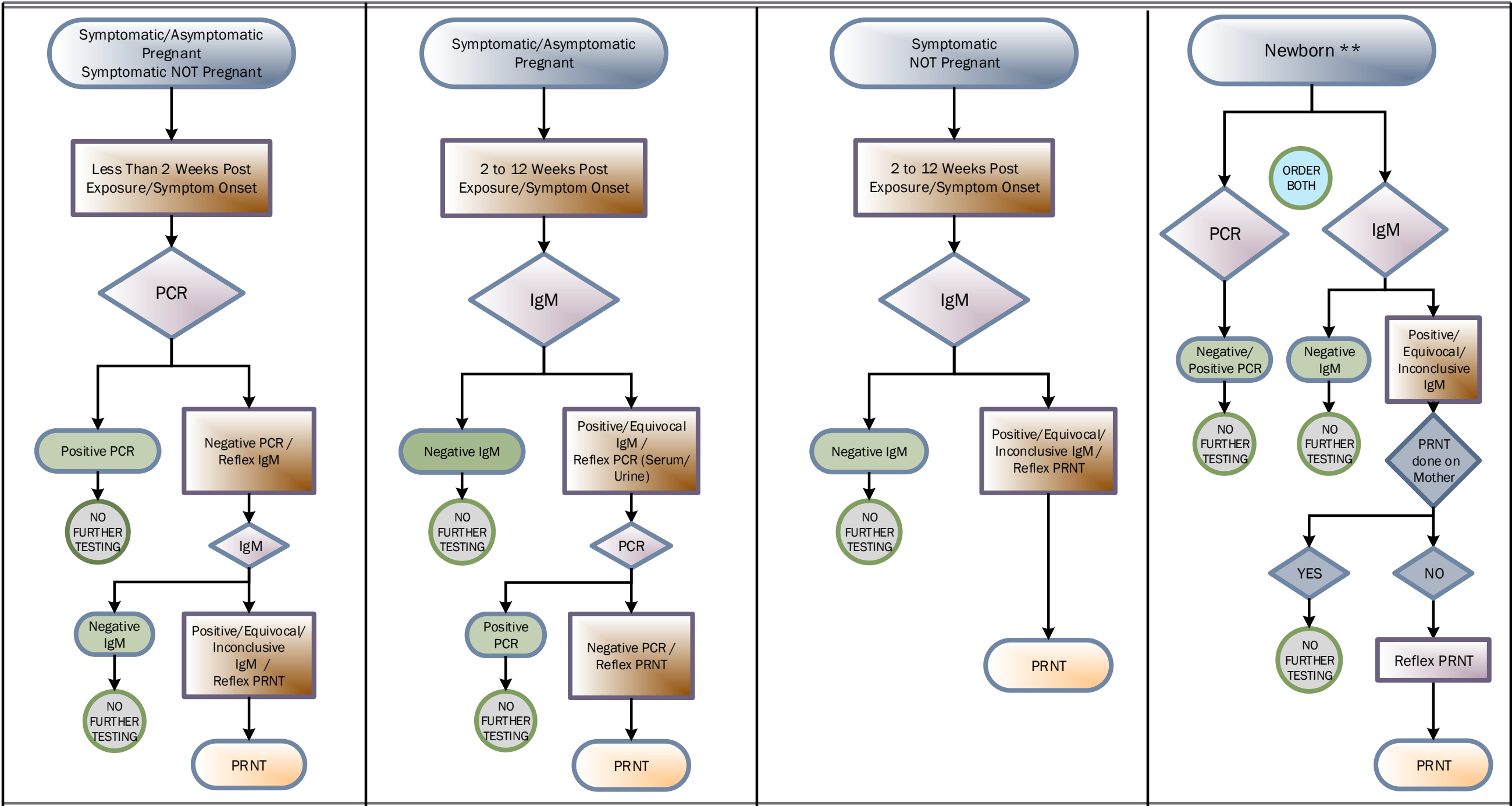


# PHEL Diagnostic Testing Algorithm for Individuals Suspected of Exposure to Zika Virus

To request Newborn testing, contact the NJ Communicable Disease Service at 609-826-5964 Monday through Friday, 8AM - 5PM  
 Request All Other testing through the local health department (LHD) where the patient resides. [Http://www.localhealth.nj.gov](http://www.localhealth.nj.gov)



Acronyms: NJDOH: New Jersey Department of Health, PHEL: Public Health and Environmental Laboratories, CDS: Communicable Disease Service  
 PCR: real-time reverse transcription Polymerase Chain Reaction, IgM: Immunoglobulin M Antibody Enzyme Linked Immunosorbent Assay, PRNT: Plaque Reduction Neutralization Test  
 \*\*Newborn testing approved by CDS