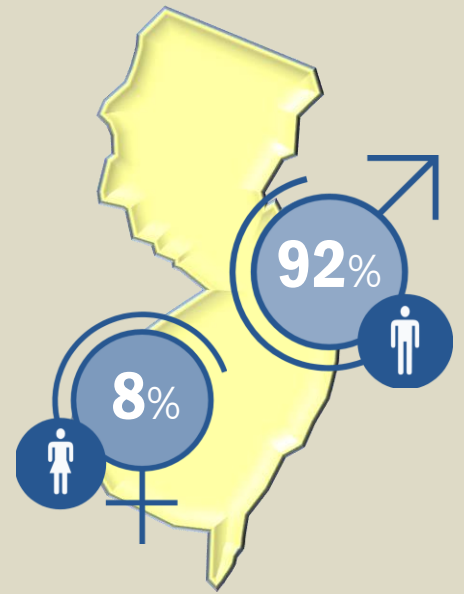
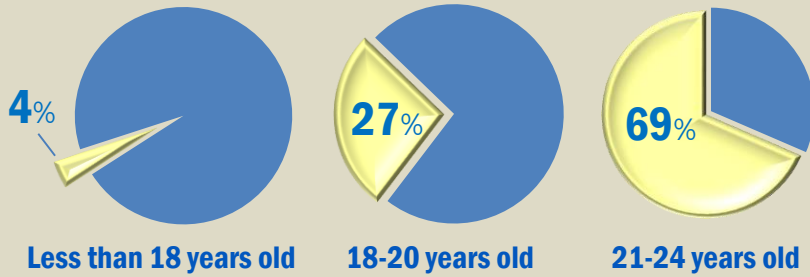


# Fatalities Among NJ Workers

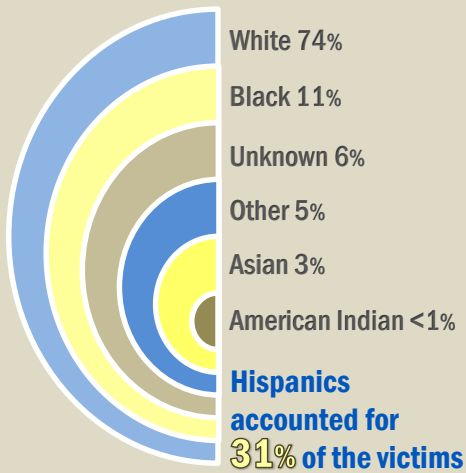
## LESS THAN 25 YEARS OLD

Total=216 (9% of all fatalities)

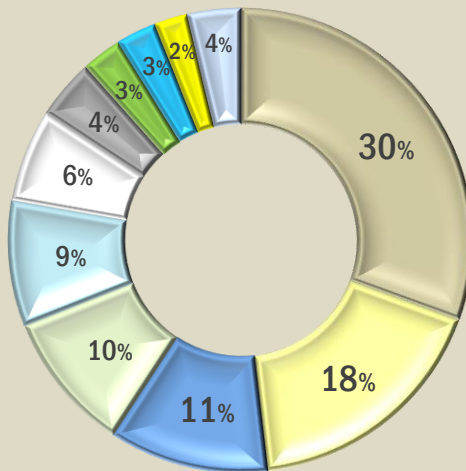
1990-2013



### Race and ethnicity of victims



### Incident type



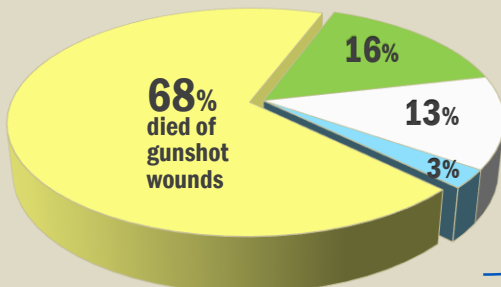
- Transportation incidents
- Homicides
- Falls
- Struck by
- Machine-related
- Electrocutions
- Suicides
- Exposure to toxic substances
- Drownings
- Fires and explosions
- Other\*

\*Other includes: 3 drug overdose, 1 asthma attack, 1 confined space, 1 accidental gun discharge, 1 cardiac stress, 1 farm animal, and 1 heat exposure

### Assaults and violent acts were the cause of death for 48 of these young workers

**39 homicides** - 2nd leading cause of death after transportation-related

Shot Stabbed Stricken Strangled



- 18% - females
- 36% - retail stores
- 62% - Whites
- 10% - public employees
- 21% - restaurants (50% delivery)
- 33% - occurred in Essex County
- 28% - Hispanics

**9 suicides**

- All males
- 18 to 24 years old
- 6 Whites
- 3 active military
- 2 Hispanics



- 56% by hanging
- 22% by poisoning
- 22% by firearms

Ten of the victims were 15 to 17 years old



### Industries with 10 or more fatalities

84% of the total number of fatal injuries occurred in these 8 sectors

