

DDD Today

A Publication of the Division of Developmental Disabilities

Chris Christie, Governor
Kim Guadagno, Lt. Governor

Volume VI, Issue VII July 2012
dddnewsletter@dhs.state.nj.us

Jennifer Velez, Commissioner
Dawn Apgar, Deputy Commissioner

**MESSAGE TO STAKEHOLDERS FROM DEPARTMENT OF HUMAN SERVICES (DHS)
DEPUTY COMMISSIONER DAWN APGAR & DEPARTMENT OF CHILDREN AND FAMILIES
DEPUTY COMMISSIONER ROBERT SABREEN**

We are writing to provide you with an update on the changes that became effective July 1, 2012, continuing through December 31, 2012, in the service delivery for youth under age 21, currently served by the Division of Developmental Disabilities (DDD). We have also sent a similar communication to staff in both the Department of Human Services (DHS) and the Department of Children and Families (DCF) to ensure that they, too, have an accurate understanding of the changes taking place. Our goal during this period is for our staff to work collaboratively to make this transition as seamless as possible and to offer a clear message to families and service providers. We hope that this information will answer questions that you may have concerning this transition.

The transfer of children will be phased in during the next six months. During this time, DDD will continue to provide all services to children with intellectual and developmental disabilities (ID/DD). The only exceptions are:

- Children newly identified as emergencies after July 1st; and
- Children on the DHS/DCF Interdepartmental Transfer List, which includes a specific group of currently identified children residing in out-of-home placements, receiving in-home services through the Children's Placement Enhancement Project (C-PEP), or already identified as emergencies.

NEWLY IDENTIFIED EMERGENCIES: Although DCF will be responsible for serving children who are newly identified as emergencies after July 1, DDD will retain responsibility for intake. Families will continue to contact DDD regional offices for services, and the intake for all new children will continue to be done by the DDD regional offices. DDD Regional Administrators (RAs) will continue to designate emergencies within their regions by determining which children under 21 need emergent assistance, including out-of-home placement. Once an RA designates a child as an emergency, a referral will be made to the Director of Children's Intensive Services in DDD's Central Office, who will refer the child to DCF's Children's System of Care, formerly the Division of Child Behavioral Health Services (DCBHS). Referrals to Children's System of Care will be made only by DDD's Central Office. Once referred, DCF will be responsible for serving the child but he/she may continue to receive technical assistance from DDD.

If a child has a behavioral health, mental health, or emotional need and would be appropriately served by PerformCare within the current Children's System of Care, referrals should continue to be made. If PerformCare receives calls for services for new children with intellectual or developmental disabilities (ID/DD) and no mental health or behavioral health challenges, callers will be referred to the DDD regional offices. While PerformCare will continue to assess youth who may have a dual diagnosis, we have not expanded their responsibilities at this time.

Continued on next page

**MESSAGE TO STAKEHOLDERS FROM DEPARTMENT OF HUMAN SERVICES (DHS)
DEPUTY COMMISSIONER DAWN APGAR & DEPARTMENT OF CHILDREN AND FAMILIES
DEPUTY COMMISSIONER ROBERT SABREEN**

Continued from previous page

NEWLY IDENTIFIED NON-EMERGENCIES: All children who are newly identified and are not designated as an emergency shall remain the full responsibility of DDD during this time. Family Support services also will continue to be administered by DDD.

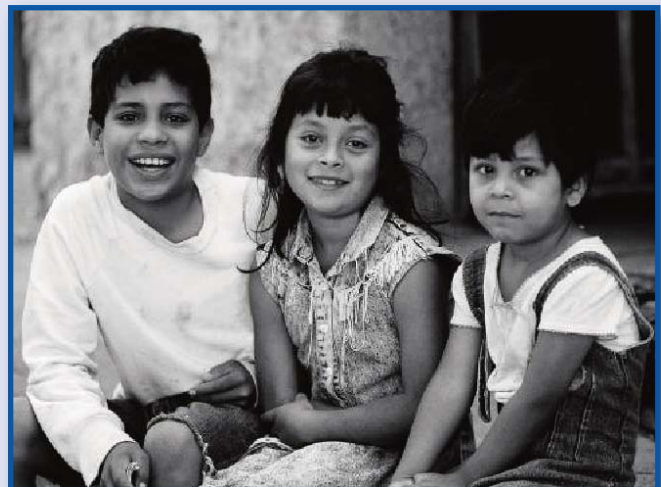
CURRENTLY IDENTIFIED CHILDREN ON THE DHS/DCF INTERDEPARTMENTAL TRANSFER LIST: DDD and DCF together have developed a Transfer List of currently identified children whose cases will be moving from DDD to DCF during July and August. DDD will continue all case management responsibilities for these children until they are notified that a child's case has been transferred. There will be a formal process and protocol established to transfer the cases. It is important to note that not all children receiving in-home C-PEP, living out of their family homes, or who already have been identified as an emergency will be transferring to DCF. If a child is not on the Transfer List, DDD will retain full responsibility during this time. Family members and providers will be advised when the transfer is taking place and will be given contact information for a new case manager. During this period, there will be no change in services unless it is required to meet a child's service needs.

DDD will retain responsibility for intake for all children with developmental disabilities, and DHS will continue responsibility for licensing during this period.

Many children who receive services from DDD also are receiving services from the DCF's Division of Child Protection and Permanency (DCP&P, formerly known as DYFS). DCP&P workers will continue to manage children with ID/DD on their caseloads and will work with their colleagues in DDD and Children's System of Care to coordinate service delivery. DCP&P case management responsibilities are not being reduced at this time.

There will be additional changes effective January 1, 2013. We will continue to communicate with you as we get closer to that date.

Throughout this transition, please remember that it may not always be clear to families who to call for assistance. DDD and DCF will provide warm call transfers to ensure that families do not get bumped from one office to the other.



Thank you for your help in making this transition as smooth as possible and seamless for families. We look forward to working with you to ensure the success of this transition.

MESSAGE TO STAKEHOLDERS FROM DEPARTMENT OF HUMAN SERVICES (DHS) COMMISSIONER JENNIFER VELEZ



You likely know that recently, the Governor signed the restructuring bills, one of which moved the Divisions of Aging and Community Services and Senior Benefits and Utilization Management to DHS – which will form our new Division of Aging Services (DoAS). We have some work ahead of us as we integrate this new Division into DHS, and we'll move forward together under the very capable leadership of Lowell Arye, Deputy Commissioner; Kathy Mason, Director of DoAS and Nancy Day, Deputy Director. DHS has added DoAS to its website but until the content is properly supported through our servers, the links will be housed with the Department of Health.

Also included in the FY'13 restructuring was the transfer of children with intellectual or developmental disabilities from DHS to the Department of Children and Families (DCF). The transition of children will be phased in during the next six months. During this time, DDD will continue to provide all current services to children with the exception of newly identified emergencies and children on the DHS/DCF interdepartmental transfer list. For more information, read the stakeholder communication that was issued.

June was busy with non-budget activities, as well. Early in the month, I had the pleasure of visiting Trenton Psychiatric Hospital's Greenhouse, a therapeutic and vocational training opportunity for patients. It was incredible to see the selection of seasonal plants, grown from seed and tended to by patients with the support of staff. I'm so proud of their accomplishments.

In addition:

- I helped a couple of residents move into a brand new Community Access Unlimited group home in Scotch Plains. It was a great feeling to help them settle into their rooms by hanging pictures, setting up their stereos, putting their clothes away and making it their own. The men were thrilled to be living in the community and sharing this very special occasion with each other and the staff from CAU.
- I attended the AARP Day at the Capital event with Governor Chris Christie and Department of Health Commissioner Mary O'Dowd.
- The Commission for the Blind and Visually Impaired launched an innovative pilot project with 15 students that replaces the need for costly text enlargement and printing expenditures by using a reader application on the iPad. I was able to see firsthand at their training session, the value and potential of this technology for students with visual impairment.

Continued on next page

MESSAGE TO STAKEHOLDERS FROM DEPARTMENT OF HUMAN SERVICES (DHS) COMMISSIONER JENNIFER VELEZ

Continued from previous page

- Assistant Commissioner of the Division of Mental Health and Addiction Services, Lynn Kovich, gave remarks at the NJ Recovery Center Graduation Ceremony in Paterson. She was extremely moved by the ceremony and immediately wrote a Letter to the Editor celebrating the graduates' achievements.
- The Catastrophic Illness in Children Relief Fund (CICRF) Commission held its annual meeting during which I had the chance to talk with families who have benefitted from grants to offset medical costs associated with their children's illness that were not covered by health insurance. It is always such an uplifting event to see the children who are making great strides toward recovery with the support of Commission funds.
- The Senator Garrett W. Hagedorn Psychiatric Hospital in Glen Gardner was closed. Part of the facility will be repurposed by the New Jersey Department of Military and Veterans' Affairs as Veterans' Haven North - a Vocational/Transitional Housing Program for Homeless Veterans.

This month we'll be doing more to highlight community based programs, services and living opportunities for seniors and individuals with disabilities. If you have a program or service you would like me to visit, please email Nicole Brossoie, Assistant Commissioner of Public Affairs, so she can consider it when she compiles our monthly outreach plan.

Thank you and have a safe, enjoyable summer.

<http://www.state.nj.us/humanservices/documents/July%20stakeholder%20message.pdf>

AUTISM

GOVERNOR PLEDGES ADMINISTRATION SUPPORT FOR AUTISM SERVICES

(AN AUTISM NEW JERSEY PRESS RELEASE)

In response to a question about coverage of autism treatment by insurance companies at the June 12th Haddonfield Town Hall meeting, Governor Christie noted that improving the lives of individuals and families affected by autism is a "special cause" for him and First Lady Mary Pat. He acknowledged the extreme difficulties experienced by individuals on the autism spectrum, especially adults faced with difficulties in obtaining employment, residential, and support services.

The Governor indicated that New Jersey has the second highest population of institutionalized individuals with disabilities was an outrage, and pledged to support the closure of developmental centers (DCs) as recommended by the State Task Force on DC Closures. These recommendations are due to be released in early August 2012.

Autism New Jersey continues to work with the Governor's staff on autism-related issues and gratefully acknowledges the cooperation of Vinny Napolitano, Director of Constituencies, State of New Jersey in this effort. For details about Autism New Jersey's Public Policy Agenda go to:

http://www.autismnj.org/Doc/Public%20Policy%20Agenda_WEB.pdf

**THE DEVELOPMENTAL DISABILITIES PLANNING INSTITUTE (DDPI)
NEW JERSEY INSTITUTE OF TECHNOLOGY'S CENTER FOR BUILDING KNOWLEDGE**

Submitted by: *Mary Delano, of the Center for Building Knowledge / DDPI*

The DD Planning Institute (DDPI) was established in 1994 as an independent research group with funding from the NJ Council on Developmental Disabilities and the New Jersey Division of Developmental Disabilities. Since then, DDPI has been conducting independent research on behalf of the State of New Jersey in order to determine the needs and abilities of individuals with intellectual and developmental disabilities. Some of the areas of focus include:

- Developmental Centers
- Consumers living at home
- Aging out of school
- Pathways to Progress (Olmstead)
- The Waiting List
- Return Home NJ
- CPEP
- Individuals in psychiatric hospitals

This year, DDPI was asked to survey consumers living in residential settings, such as group homes, supervised apartments, supported living, and Community Care Residences. These consist of approximately 140 providers and 7,000 consumers.

For this project, DDPI has created digital surveys to be completed online versus completing them over the telephone as has been done in the past. However, DDPI is prepared to provide telephone support and will be available to conduct telephone interviews with locations that do not have computer access.

For more information, contact ddrt@njit.edu or 973-642-7616.



AUTISM NEW JERSEY – UPCOMING WORKSHOP

Maximizing the Respite Experience for Individuals with Autism



**July 30
10 am - 1 pm
Basking Ridge, NJ**

Register for Maximizing the Respite Experience

**Attention Professionals Seeking Workshops: Tell us what you want to hear!
If you plan to attend our professional workshops next year,
please take this brief survey so we can incorporate your needs into these sessions.**

NJ's AGING & DISABILITY RESOURCE CONNECTION NOW STATEWIDE ENHANCED DELIVERY SYSTEM FOR LONG -TERM SERVICES AND SUPPORTS IN 21 COUNTIES

TRENTON – New Jersey’s efforts to ensure seniors and adults with disabilities in need of long-term services and supports have information and easy access to community-based alternatives reached a milestone recently when an enhanced service delivery system known as the Aging and Disability Resource Connection (ADRC) became operational in all 21 counties.



The ADRC is a joint initiative between the New Jersey Departments of Health and Senior Services and Human Services, with the 21 Area Agencies on Aging serving as the county lead agencies in partnership with other state and local governmental and nonprofit agencies in the aging and disability services networks.

The ADRCs provide consumers with improved access to community programs, such as meals-on-wheels, personal care, housekeeping, specialized transportation, assisted living, and nursing home care. It also connects seniors and adults with disabilities with work and volunteer opportunities, insurance programs, financial supportive services, health promotion and disease prevention programs, housing, crisis intervention, and other home and community programs.

“The ADRC is a key component of the State’s plan to transform our overall long-term care system to one that encourages community-based services and consumer direction,” said Health and Senior Services Commissioner Mary E. O’Dowd. “ADRC gives consumers greater choice and more control over how, when, and where needed services are provided.”

Traditionally, services for senior citizens have been administered separately from those for persons with disabilities, even though these groups share many of the same needs and face many of the same barriers to care.

Human Services Commissioner Jennifer Velez said, “(This) achievement creates a single point of access in every county for aging residents and individuals with disabilities to get information or referrals, submit applications, and receive certain services. This type of one-stop resource and convenience is invaluable, especially for people with mobility and transportation challenges.”

New Jersey was one of 12 states in 2003 to receive a grant (\$798,041) from the U.S. Department of Health and Human Services to design and test the ADRC initiative in two counties, Atlantic and Warren. A second round of federal grant funding in 2008 (\$400,000) allowed the State to refine its model and work with other counties to rollout the initiative statewide.

Continued on next page

NJ'S AGING & DISABILITY RESOURCE CONNECTION NOW STATEWIDE ENHANCED DELIVERY SYSTEM FOR LONG -TERM SERVICES AND SUPPORTS IN 21 COUNTIES

Continued from previous page

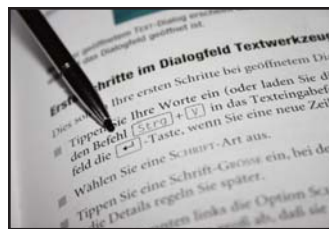
Services available at local ADRCs include outreach and educational activities to ensure individuals know about the array of long-term services and supports available to delay or eliminate the need for institutional care. Using computerized tools specifically designed for the ADRC, county staff screens individuals regardless of income to determine their level of need and potential financial eligibility for government-funded services. Staff also conducts an enhanced intake survey that allows for counseling at all stages in the process and quickly identifies individuals in need of immediate interventions to maintain their independence.

As part of this effort, the State enhanced its ADRC website – www.adrcnj.org – by adding thousands of national, state, and local resources, several new search options, and other consumer-friendly tools, including Google translation and mapping features. The site is Section 508-compliant for improved access to individuals with vision impairments.

Updated School Referral List

**Autism New Jersey's Directory of New Jersey Schools
Serving Children with Autism Spectrum Disorders
referral list is now available.**

Download a copy today or call 800.4.AUTISM to request a hard copy.



JULY 26 MARKS THE 22ND ANNIVERSARY OF THE ADA!

“With today's signing of the landmark Americans with Disabilities Act, every man, woman and child with a disability can now pass through once-closed doors into a bright new era of equality, independence and freedom.”

Former President George Bush at the signing of the Americans with Disabilities Act on July 26, 1990

NEWS & ANNOUNCEMENTS FROM THE BOGGS CENTER

THE ELIZABETH M. BOGGS CENTER
ON DEVELOPMENTAL DISABILITIES

Department of Pediatrics



ROBERT WOOD JOHNSON
MEDICAL SCHOOL

University of Medicine & Dentistry of New Jersey

NEWS & ANNOUNCEMENTS FROM THE BOGGS CENTER

New and re-printed resources are available on The Boggs Center website:

New! Everyone can be employed...Your child is not “too disabled” to pursue employment!

**Developed by the NJ Alliance for Full Participation Employment First Policy Group
Available in English and Spanish PDF and print copies**

[View the resource in PDF format-English](#)

[View the resource in PDF format-Spanish](#)

[Order online from The Boggs Center](#)

Re-printed! Autism and Faith: A Journey Into Community

[Available in English and Spanish PDF and print copies](#)

[View the booklet in PDF format-English](#)

[View the booklet in PDF format-Spanish](#)

[Order online from The Boggs Center](#)

**Re-printed! Being a Healthy Adult: How to Advocate for Your Health and Health Care
Available in English and Spanish PDF, audio files, and print copies**

[Order print copies from The Boggs Center](#)

[Download the PDF and mp3 audio files](#)

**Revised! Your Guide for Making Medicaid Managed Care Work for You
Available in English and Spanish PDF and print copies**

[View the guide in PDF format - English](#)

[View the guide in PDF format - Spanish](#)

A limited number of hard copies are available from The Boggs Center. Please contact kathy.roberson@umdnj.edu for more information.

**For more details on these and other products, please visit:
http://rwjms.umdnj.edu/boggscenter/products/product_info.html**

ANNOUNCEMENTS

SAVE THE DATE!



EXPO:
FRIEND-
SHIP .ORG
community • unity

A PLACE TO MEET FRIENDS AND NETWORK WITH SPECIAL NEEDS ORGANIZATIONS.

SUNDAY, OCTOBER 28

AT ROBBINSVILLE HIGH SCHOOL
10 AM to 7 PM

- 🕒: Special Needs Resource Fair and Exhibitors
- 🕒: Motivational Keynote Speaker
- 🕒: Drop-off Program for Children
- 🕒: Family Fun Center
- 🕒: Special Needs Simulation Exhibit

- 🕒: Free Resource Guide for All Pre-registered Participants
- 🕒: Give-aways and Door Prizes



A Project of The Friendship Circle of Greater Mercer County

FOR MORE INFO CONTACT US
AT 609.683.7240 OR VISIT
WWW.EXPOFRIENDSHIP.ORG

COMMUNITY ACCESS UNLIMITED MEMBERS APPLAUD ACHIEVEMENT AND PERFORMANCE

ANNUAL CELEBRATIONS RECOGNIZE THOSE WHO HAVE ACHIEVED SUCCESS AND INSPIRED FELLOW MEMBERS

Submitted by: Cara Pavia, Community Access Unlimited

Elizabeth, NJ – Believing that even the simplest accomplishment should be celebrated when it is achieved from a more difficult starting point, the members and staff of Community Access Unlimited (CAU) recently honored award winners at the agency’s Performance Recognition Night for members with disabilities and Youth Achievement Night for CAU’s at-risk youth.

CAU provides support programs and services to people with disabilities and at-risk youth to enable them to live independently in the community. Services include housing, vocational and life-skills training, education, advocacy, and recreation.

The agency’s Performance Recognition Night recognized 11 members with disabilities who made progress toward goals and performed in ways that strengthened their ability to live independently.

Dante Chrystal, a CAU member with disabilities since 2008, was recognized for his remarkable determination in both setting and achieving goals. Chrystal told his counselor he wanted to find a job, get his license, and buy a car. After one day, he was working at UPS, saving his wages for driving lessons. On May 26, he passed his driver’s test to earn his license and began a new job at a staffing firm.

“I have a great staff behind me, (and) great support from my counselor,” Chrystal said. “I have great thoughts. I only keep the positive and let the negative go. Whenever I get down, I count my blessings. I may not have everything, but I have more than others. If you believe and work hard, your dreams will come true.”

Chrystal’s third dream came true the night of the awards event when CAU Executive Director Sid Blanchard told him the agency was giving him a car in recognition of his hard work.

Furthermore, Annie Johnson developed new dreams this year. A member with disabilities since 2009 who was described as a wonderful person to be around, Johnson was recognized for her accomplishments in hair dressing, basketball, and dancing. Johnson is playing the role of Mrs. Mayor in CAU’s upcoming production of “Seussical Jr.” and the experience has opened to her a new door of dreams and goals, she said.



Dante Chrystal, a member of Community Access Unlimited (CAU) who has disabilities, accepts his award at CAU’s Performance Recognition Night. Chrystal found a job, saved for driving lessons, and passed his driver’s test to earn a license. He was also rewarded with a car from the agency.

Continued on next page

COMMUNITY ACCESS UNLIMITED MEMBERS APPLAUD ACHIEVEMENT AND PERFORMANCE

Continued from previous page



“I love the dancing and interaction,” Johnson said. “I never was part of anything before. Now I know I can be a dancer. I can be an actor. I can be a singer, too. I want to do more and bigger parts.”

Brittany Coleman was one of the Valedictorian Award winners at CAU Youth Achievement Night, which honored 33 youth members. She recently graduated from Drew University with honors. While Coleman has applied for law school and may return to that path later, for now she plans to focus on entering graduate school and earning a master’s degree in social work, she said. She wants to work for the New Jersey Division of Youth and Family Services.

“I was in foster care and I want to give back,” said Coleman, who has been a CAU member for three years. “I want to inspire them and tell them they can do anything they want to do regardless of their circumstances.”

Yawina Cirene has only been at CAU for six months yet was one of the recipients of the Most Likely to Achieve Award. The 18-year-old junior at Abraham Clark High School in Roselle maintains a 3.6 grade point average, recently began a part-time job, opened checking and savings accounts, participates in CAU’s leadership program, and is a youth mentor in school. She was described as a role model for other members.

“I will be a CEO at a major corporation one day, bigger than Apple,” Cirene said. “I want to own my own large corporation. I could just start now with a lemonade stand, and it would be the best lemonade in the world and it would grow into a large corporation.”

Rather than taking the lemonade path, however, Cirene plans to go to college after high school to earn a business degree. She already is eyeing Rutgers, Seton Hall, Rider and William Paterson Universities.

“I want to compliment our 2012 recipients for the great job they have done in 2011,” Blanchard said. “They are a great example to all of us of how we need to set goals and achieve them.”

About CAU

Community Access Unlimited (CAU), celebrating its 33rd anniversary in 2012, supports people with special needs in achieving real lives in the community. CAU provides support and gives a voice to adults and youth who traditionally have had little support and no voice in society. CAU helps people with housing, life skills, employment, money management, socialization, and civic activities. CAU also supports opportunities for advocacy through training in assertiveness, decision-making, and civil rights. CAU serves more than 4,500 individuals each year. For more information about CAU and its services, contact us by phone at 908-354-3040, online at www.caunj.org, or by mail at 80 West Grand Street, Elizabeth, NJ 07202.






WARM WEATHER PROTOCOL

TIPS FROM NJ DEVELOPMENTAL CENTER

During the summer months, special precautions must be taken with any individual with a disability who is engaging in outdoor activities when the temperature reaches **90 DEGREES AND ABOVE**.

There may be some clients with severe cardiac, seizure, or respiratory problems, who may be restricted from outdoor activities by the physician on staff when the temperature exceeds 90 degrees.

The following special precautions must be taken for any client engaging in outdoor activities during the summer months when the weather is hot and/or humid:

-  Limit the length of time of continuous sun exposure to one (1) hour between the hours of 11 am and 4 pm. This also applies to pool activities. If the individual's continuous sun exposure is interrupted by rest time in the shade, then the individual may be outside for longer periods.
-  Sunscreen is to be applied to all individuals before engaging in outdoor activities. Sunscreen is to be re-applied when clients are emerging from pool water.
-  Fluids must be available at the destination point when clients leave the living unit, including the pool, black-top, and all programming areas.
-  Protective clothing is to be worn by clients when leaving the living unit whenever possible, including light-colored and loose fitting clothes, as well as hats and sunglasses for those clients who will keep them on.
-  Staff always needs to remain vigilant for any signs of heat distress when outdoors, including excessive sweating, excessive fatigue, and dizziness.



THE ELIZABETH M. BOGGS CENTER
ON DEVELOPMENTAL DISABILITIES

Department of Pediatrics



ROBERT WOOD JOHNSON
MEDICAL SCHOOL

University of Medicine & Dentistry of New Jersey

JULY – SEPTEMBER 2012 TRAINING OPPORTUNITIES

View training courses, dates, locations, and register online at:
<http://rwjms.umdj.edu/boggscenter/training/overview.html>

View continuing education information for training courses at:
http://rwjms.umdj.edu/boggscenter/contin_ed/index.html

Aging and End of Life

Grief and Loss: Supporting Adults with Developmental Disabilities at End of Life and Other Difficult Transitions

Community Building and Connection

In Community: Supporting People with Developmental Disabilities in Establishing Meaningful Community Connections

Employment Specialist

Employment Specialist: Introductory Level

Employment Specialist: Advanced Level

NEW! Employment Specialist Supplemental Training: Understanding Mental Illness

Faith Based Supports

Building Connections and Community Supports with Your Congregation or Faith Community:
A Workshop for Individuals, Families, and Community Members

Individual Habilitation Plan

IHP Plan Coordinator Training

Management

Survival Skills for Managers in Community Supports

Leadership Skills for Managers in Community Supports

Personal Skills for Managers in Community Supports

Person Centered Thinking

Person Centered Thinking Skills

Positive Behavior Support

Basic Positive Behavior Support

Applied Strategies for Implementing Positive Behavior Support

Mental Health Supports

SPREADING HER WINGS - A TRANSPORTATION TRAINING SUCCESS STORY



Written by Lisa Shaw, Special Residential Services Director, Arc of Cape May (With contributions from Amber)

Amber called the other night to ask my thoughts about a trip she was planning to make with a friend to go to Philadelphia. As the conversation progressed, I was delighted to learn the details of the trip and that transportation would be via a train. The reason for this delight was two-fold. Naturally, it was pleasing she sought my opinion, but more importantly, this exchange demonstrated just how far Amber had come in achieving her transportation goal.

Amber reluctantly started independent travel training in high school during her freshman year. A variety of unsuccessful strategies and supports were explored over the next three years. Her fear of getting lost and not being able to understand the bus schedule was daunting. Amber's team met regularly to brainstorm ideas - searching for anything to encourage her.

Surprisingly, something prompted her to begin riding the bus with staff during her senior year of school. After graduation, Amber started using New Jersey Transit's Access Link to commute to work daily. It had now become a part of her regular routine and opened her mind to explore additional modes of independent travel.

Fast forward another two years, and to my thoughts. Amber enthusiastically shares her plans to take the train to the city. Your teachers would be so proud of you, Amber - I know I am.

WOODBIDGE DEVELOPMENTAL CENTER WELCOMES NEW CEO

The Division of Developmental Disabilities (DDD) would like to welcome Mary Jo Kurtiak as the new CEO of Woodbridge Developmental Center, effective June 30, 2012. Kurtiak previously served as the CEO at Hagedorn Psychiatric Hospital. She brings with her a wealth of administrative experience, and we know that she will be a positive addition to DDD. Kurtiak replaced William Mayes. We wish him the best in his retirement!

OLMSTEAD MARKS 13TH ANNIVERSARY

DDD CONTINUES EFFORTS TO MOVE INDIVIDUALS INTO THE COMMUNITY

Last month marked the 13th anniversary of the Supreme Court's decision that the unjustified institutional isolation of people with disabilities is indeed unlawful under the Americans with Disabilities Act in *Olmstead v. L.C.*

Since the ruling, the NJ Division of Developmental Disabilities has made significant strides in moving individuals out of developmental centers and into the community. Although this effort is still underway, the Division is proud to report that there were no developmental center admissions this calendar year with the exception of court ordered admissions.

Furthermore, the Division established a centrally based Olmstead Unit to help ensure that efforts related to community placement continue to move forward. As part of the Unit, there are Transitional Case Managers at each developmental center. Their jobs are to transition people from the DCs to community-based provider agencies.

Additionally, staff have further streamlined processes. The Division formalized all Olmstead procedures and continues to re-evaluate their effectiveness.

As many readers are already aware, a State task force is currently evaluating the feasibility of continuing with seven developmental centers in New Jersey. Depending upon its determination, the Division will adjust efforts, as needed, to ensure Olmstead movements occur in a timely fashion for DC slated closures. Staff also will work to maintain regular movements from other DCs.

As a side note (similar to DHS), the U.S. Department of Health and Human Services (HHS) announced the establishment of the Administration for Community Living (ACL). The ACL brings together the Administration on Aging, the Office on Disability, and the Administration on Developmental Disabilities into a single agency to help people with disabilities and seniors receive the necessary supports they need to be able to live at and to contribute to the greater community. For more information, visit: <http://www.hhs.gov/acl/>



Have a safe and enjoyable summer!

The Staff at DDD

VSA NEW JERSEY OFFERS SERVICES FOR CHILDREN WITH AUTISM

New Brunswick, NJ – VSA New Jersey invites families of children with autism and professionals who work with young people with autism to contact the organization to learn more about its services in advance of its fall 2012 Parent/Child Workshops in the Arts for Children with Autism.

Parent/Child Workshops in the Arts for Children with Autism

Now in its 30th year, the Parent/Child Workshops in the Arts for Children with Autism is a signature program of VSA New Jersey. Through participation in weekly workshops in the visual and performing arts, young people will enhance their understanding and appreciation of the arts while developing skills essential for academic and personal growth. The family arts experience offers unique opportunities to engage children, siblings, and parents in enjoyable and enriching activities that will support communication and interaction in the workshop setting and at home.

The Parent/Child Workshops in the Arts for Children with Autism or Autistic Behaviors is offered on Saturdays in the fall and spring in New Brunswick (9 am to 3:30 pm). Each ten-week workshop meets for one hour per week. There is a \$30 registration fee for families who receive class placement in this program. Fee waivers are available upon request.

About VSA New Jersey

Founded in 1978, VSA New Jersey promotes the creative power of people with disabilities through arts education, professional development, cultural access, and outreach programming. VSA New Jersey is an affiliate of VSA, a program of The John F. Kennedy Center for the Performing Arts.

For more information, contact VSA New Jersey at 703 Jersey Avenue, New Brunswick, NJ 08901, (732) 745-3885, (732) 745-3913 TTY, or info@vsanj.org. Visit VSA New Jersey online at www.vsanj.org.

CHECK OUT ABLE NEWSPAPER FOR MORE DISABILITY-RELATED NEWS

Able Newspaper is an established, widely known publication in the disability community. The New Jersey edition of Able can be read online for free. Just visit www.ablenews.com and click on the "Click Here for Free Edition" at the top of the page.



ANNOUNCEMENTS



Direct Support Professional
Recognition Week is

Sept. 9 – 15, 2012

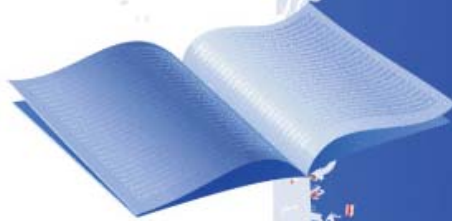
*Direct Support Professionals across New Jersey are
dedicated to supporting and empowering people
with disabilities to live meaningful lives.*

Take this time to...

Thank your DSPs!

Stay tuned. Ideas on ways to recognize DSPs will follow.

STORY IDEAS?



E-MAIL US AT:
DDDnewsletter@dhs.state.nj.us

We will happily consider your request!

DDD Today

A Publication of the Division of Developmental Disabilities

Contact us at:

Division of
Developmental Disabilities
P.O. Box 727
Trenton, NJ 08625-0726

**DDD Information and DHS
Central Registry Hotline:
1-800-832-9173**

The Division of Developmental Disabilities (DDD) was created in response to the need for better and more effective services for state residents with developmental disabilities. Advocates for those services included many parents and other family members who wanted community-based alternatives to the institutional care that had been their only option for many decades.

Today, more than 43,000 individuals are eligible to receive services funded by the division, including a growing number who are under the age of 22. Most DDD-eligible individuals live in the community, either with family or in a community residence such as a group home or supervised apartment or in a Community Care Residence with a family caregiver. Almost 2,600 individuals reside in one of the seven developmental centers now administered by DDD.

Visit us on the Web at: www.state.nj.us/humanservices/ddd