

file: binder

DEPARTMENT OF HUMAN SERVICES
INTER-OFFICE COMMUNICATION

Date: July 30, 2009

TO: Jennifer Velez
Commissioner

FROM: Jeanette Page-Hawkins, Director
Division of Family Development



SUBJECT: CURRENT PROGRAM STATISTICS

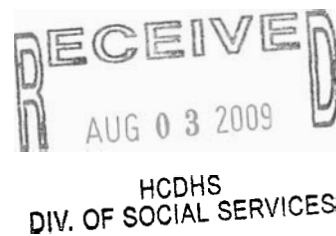
Attached please find the *Current Program Statistics* for May 2009. Included are TANF-oriented and Food Stamps data, General Assistance data, and the WFNJ Statistical Summary.

Should you have any questions regarding this report, please call:
David Karwoski at 588-2274.

JPH:Jet:t

Attachments

C. Nicole Brossoie, Public Information



**State of New Jersey
Department of Human Services
Division of Family Development**

CURRENT PROGRAM STATISTICS



May 2009
Jeanette Page-Hawkins, Director

RECEIVED
AUG 03 2009

HCDHS
DIV. OF SOCIAL SERVICES

**DIVISION OF FAMILY DEVELOPMENT CURRENT PROGRAM STATISTICS
MAY 2009**

TABLE OF CONTENTS

HIGHLIGHTS:

WFNJ/TANF	ii
TANF WORK PARTICIPATION RATE	ii
FOOD STAMP PROGRAM.....	ii
EMERGENCY ASSISTANCE.....	ii
GENERAL ASSISTANCE.....	iii
GA Emergency Assistance	iii
GA Program	iii
CHILD SUPPORT AND PATERNITY.....	iii
WORK FIRST NEW JERSEY (WFNJ).....	iii
STATISTICS- BY STATE & COUNTY:.....	1
Table 1: WFNJ/TANF Families & Persons (NJ Statewide) May 2007 to 2009.....	1
Table 2: WFNJ/TANF Families (by County)- May 2009	2
Table 2B: WFNJ/TANF Persons, Adults, & Children (by County)- May 2009	3
Table 3: TANF Work Participation Rates Over 12 Month Period (by County)- May 2009	4
Table 4: TANF Work Participation Rates Over 12 Month Period (NJ Statewide)- May 2009.....	5
Table 5: Food Stamp Program Households/Persons (NJ Statewide) May 2007 to 2009	6
Table 6: Food Stamp Recipient Trends (NJ Statewide) May 2007 to 2009	7
Table 7: Food Stamp Program Households/Persons (by County)- May 2009	8
Table 8: Emergency Assistance Program (NJ Statewide) May 2007 to 2009.....	9
Table 9: Emergency Assistance Program (by County)- May 2009	10
Table 10: General Assistance Program (NJ Statewide) May 2007 to 2009	11
Table 11: General Assistance Program (by County)- May 2009.....	12
Table 12: Child Support & Paternity Distributions (NJ Statewide) FFY 2008	13
Table 13: Child Support & Paternity Cases With Orders- May 2009	14
Table 14: WFNJ Statistical Summary- May 2009	15
ACRONYMS.....	16
EXPLANATORY NOTES	16
WFNJ Statistical Summary (Table 14).....	17

DIVISION OF FAMILY DEVELOPMENT CURRENT PROGRAM STATISTICS MAY 2009

Each month the Division of Family Development publishes its program statistics for: WFNJ/TANF, Food Stamps, Emergency Assistance, General Assistance (GA) and Child Support and Paternity. When possible, information is provided separately for children and adults. Many tables also provide trend data with information broken down by county for readers to consider.

WFNJ/TANF

- At the end of May, the TANF caseload decreased by 1,151 cases, from 37,740 in May 2008 to 36,589 in May 2009, a 3.0% decline.
- The counties with the highest family caseload percentage increase since May 2008 include Hunterdon (44.3%), Ocean (24.2%), and Sussex (24.0%).
- The counties that decreased the most since May 2008 were Essex (-8.0 %), Passaic (-8.7%) and Union (-11.2 %)
- Of the WFNJ/TANF families, 9,877 or 27.0% were child-only cases in May 2009

The counties with the most child-only cases were Essex (1,693), Hudson (1,334), and Camden (1,158).

Essex (20,007), Hudson (11,945), and Camden (9,749) counties have the greatest number of persons receiving TANF in May 2009.

FOOD STAMP PROGRAM

- May 2009 there are 245,811 households receiving food stamps. Food Stamp households increased by 34,408, or 16.3%, since May 2008.

There were 502,317 persons receiving food stamps as of May 2009, an increase of 68,833 or 15.9 % since May 2008.

- The three counties having the highest caseload increase since May 2008 are Hunterdon (44.0%), Somerset (28.1%), and Bergen (27.3%)

EMERGENCY ASSISTANCE

- There were 4,991 families receiving emergency assistance (EA) in May 2009, an increase of 305 or 6.5% since May 2008.
- In May 2009, EA payments were made for 1,504 SSI recipients

**DIVISION OF FAMILY DEVELOPMENT CURRENT PROGRAM STATISTICS
MAY 2009**

GENERAL ASSISTANCE

GA Emergency Assistance

- There were 8,205 emergency assistance payments made to GA recipients in May 2009, an increase of 580 or 7.6% since May 2008.
- The three counties that show an annual percent increase in emergency assistance payments are Cumberland (85.5%), Morris (55.3%), and Hunterdon (52.9%).

GA Program

- The total numbers of persons for GA has increased from 41,334 to 47,344 since May 2008, an increase of 14.5%.
- There were 29,878 Employable GA and 17,466 Unemployable GA recipients in May 2009.
- Essex (70.2%), Hunterdon (46.7%), and Sussex (31.6%) counties showed the highest percent increase for GA persons since May 2008.

CHILD SUPPORT AND PATERNITY (Quarterly Report)

- The total collection for the Child Support and Paternity Program was about 290 million dollars from October 2007 to September 2008, an increase of 7.7 percent over the same period for FFY 2007.
- Total distributions increased over 13 percent from September 2007.

WORK FIRST NEW JERSEY (WFNJ)

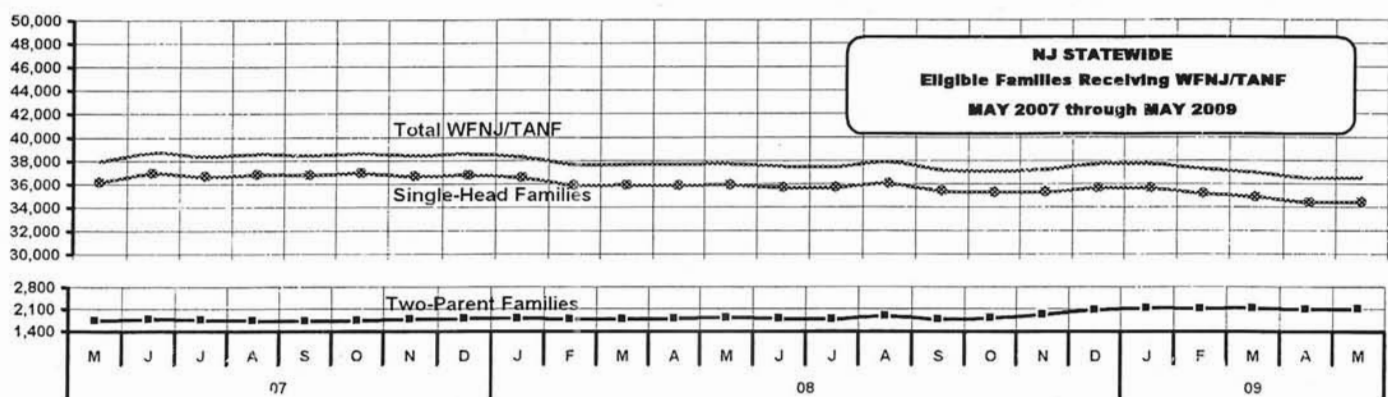
- During the report month of May 2009, there were 3,716 families where at least one member is employed and an additional 514 families where WFNJ assistance cases were closed due to employment – related earnings.
- The three counties with the greatest number of employed active recipients were: Essex (870), Hudson (444), and Camden (312).
- There were 4,206 former TANF cases receiving post-TANF support in the form of child care assistance.

TABLE 1: WFNJ/TANF PROGRAM

STATEWIDE NUMBER OF APPLICATIONS AND TERMINATIONS DURING MAY 2009;
NUMBER OF ELIGIBLE FAMILIES & PERSONS RECEIVING WFNJ/TANF FOR MAY 2009

MAY 2007 THROUGH MAY 2009

		Cases Added	Cases Closed	Child-Only Cases ‡	Total Singl-Head Families	2- Parent Families	Total WFNJ/TANF Families	%CHNG (1 Yr.)	* Total Persons	%CHNG (1 Yr.)	Adults	* Children
2007	MAY	3,000	3,754	10,545	36,200	1,755	37,955	(10.2)	96,454	(4.0)	29,165	67,289
	JUN	4,094	3,303	10,750	36,949	1,797	38,746	(7.4)	96,769	(2.7)	29,793	66,976
	JUL	3,482	3,802	10,531	36,664	1,762	38,426	(7.2)	96,287	(2.2)	29,657	66,630
	AUG	3,666	3,464	10,458	36,871	1,757	38,628	(6.6)	96,882	(1.4)	29,927	66,955
	SEP	3,603	3,743	10,288	36,768	1,720	38,488	(6.9)	96,873	(1.6)	29,920	66,953
	OCT	3,683	3,467	10,304	36,959	1,745	38,704	(6.4)	97,358	(1.1)	30,145	67,213
	NOV	3,368	3,601	10,191	36,683	1,788	38,471	(5.6)	97,124	0.2	30,068	67,056
	DEC	3,570	3,426	10,188	36,808	1,807	38,615	(4.4)	97,469	1.7	30,234	67,235
2007 AVERAGE		3,453	3,600	10,559	37,004	1,770	38,774		97,506		29,984	67,521
2008	JAN	3,431	3,678	10,186	36,558	1,810	38,368	(3.9)	96,732	(4.0)	29,992	66,740
	FEB	3,016	3,656	10,134	35,939	1,789	37,728	(3.9)	95,082	(3.7)	29,383	65,699
	MAR	3,313	3,336	10,084	35,908	1,797	37,705	(4.2)	95,002	(3.5)	29,418	65,584
	APR	3,369	3,375	10,111	35,885	1,814	37,699	(2.6)	94,773	(2.2)	29,402	65,371
	MAY	3,484	3,443	10,033	35,916	1,824	37,740	(0.6)	94,999	(1.5)	29,531	65,468
	JUN	3,357	3,576	9,881	35,699	1,822	37,521	(3.2)	94,421	(2.4)	29,462	64,959
	JUL	3,457	3,463	9,716	35,720	1,795	37,515	(2.4)	94,427	(1.9)	29,594	64,833
	AUG	3,705	3,295	9,664	36,022	1,903	37,925	(1.8)	95,856	(1.1)	30,164	65,692
	SEP	3,323	4,035	9,593	35,416	1,797	37,213	(3.3)	93,901	(3.1)	29,417	64,484
	OCT	3,729	3,849	9,384	35,270	1,823	37,093	(4.2)	94,297	(3.1)	29,532	64,765
	NOV	3,848	3,654	9,435	35,347	1,940	37,287	(3.1)	94,960	(2.2)	29,792	65,168
	DEC	3,718	3,252	9,586	35,669	2,084	37,753	(2.2)	96,175	(1.3)	30,251	65,924
2008 AVERAGE		3,479	3,551	9,817	35,779	1,850	37,629		95,052		29,662	65,391
2009	JAN	3,436	3,414	9,633	35,643	2,132	37,775	(1.5)	96,244	(0.5)	30,244	66,000
	FEB	3,249	3,715	9,761	35,188	2,121	37,309	(1.1)	94,788	(0.3)	29,669	65,119
	MAR	3,257	3,532	9,963	34,903	2,131	37,034	(1.8)	93,762	(1.3)	29,202	64,560
	APR	3,231	3,748	9,908	34,422	2,095	36,517	(3.1)	92,401	(2.5)	28,704	63,697
	MAY	3,452	3,380	9,877	34,476	2,113	36,589	(3.0)	92,673	(2.4)	28,825	63,848
2009 AVG to date		3,325	3,558	9,828	34,926	2,118	37,045		93,974		29,329	64,645



As of Nov 2004, data is derived and further refined from NJ Division of Family Development Issuance files
(To retain consistency, all data is restated from Nov 2002 to present, reflecting only minor changes to prior reported values).

‡ Child-only cases are defined as families where no eligible adult receives TANF program benefits, yet the family continues to be headed by at least one of the biological parents, or grandparents, or other appropriate adult.

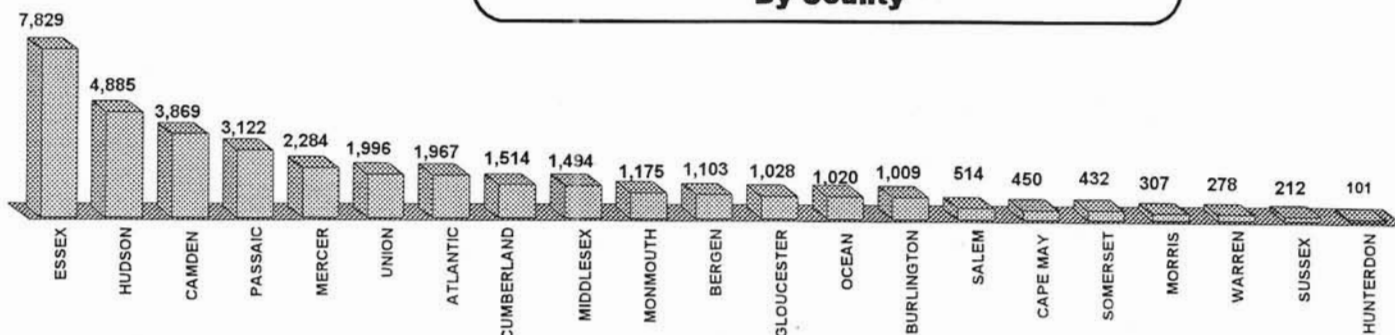
* May 2007 TANF Persons and TANF Children have been corrected.

Table 2
WFNJ/TANF
PROGRAM

NUMBER OF APPLICATIONS AND TERMINATIONS BY COUNTY DURING MAY 2009, AND
NUMBER OF ELIGIBLE FAMILIES RECEIVING WFNJ/TANF REPORTED FOR MAY 2009

County	Cases Added	Cases Closed**	Child-		Total		Total		% Chng (3 Mon)	% Chng (1 Yr)
			Only Cases ‡	1-Adult Cases	Singl-Head Families	2-Parent Families	WFNJ/TANF Families			
ATLANTIC	121	102	513	1,303	1,816	151	1,967	1.7	1.5	
BERGEN	93	73	261	742	1,003	100	1,103	1.3	1.3	
BURLINGTON	117	96	338	574	912	97	1,009	2.0	3.9	
CAMDEN	335	274	1,158	2,548	3,706	163	3,869	(0.1)	(3.6)	
CAPE MAY	49	58	104	292	396	54	450	(5.7)	16.0	
CUMBERLAND	118	170	558	836	1,394	120	1,514	(5.6)	(0.1)	
ESSEX	1,028	1,005	1,693	5,760	7,453	376	7,829	(3.7)	(8.0) *	
GLOUCESTER	82	90	229	719	948	80	1,028	2.0	(2.5)	
HUDSON	349	302	1,334	3,310	4,644	241	4,885	0.2	(6.8)	
HUNTERDON	14	18	22	70	92	9	101	(12.2)	44.3 Δ	
MERCER	168	199	587	1,590	2,177	107	2,284	(1.8)	(0.8)	
MIDDLESEX	147	158	549	877	1,426	68	1,494	3.2	10.7	
MONMOUTH	111	105	336	788	1,124	51	1,175	(2.7)	(3.5)	
MORRIS	26	36	88	176	264	43	307	(3.2)	(3.8)	
OCEAN	112	75	345	593	938	82	1,020	6.3	24.2 Δ	
PASSAIC	225	240	822	2,128	2,950	172	3,122	(1.1)	(8.7) *	
SALEM	46	58	129	360	489	25	514	(5.2)	9.4	
SOMERSET	43	29	123	284	407	25	432	0.0	8.3	
SUSSEX	40	31	46	144	190	22	212	(2.3)	24.0 Δ	
UNION	200	236	586	1,317	1,903	93	1,996	(3.5)	(11.2) *	
WARREN	28	25	56	188	244	34	278	5.3	19.3	
NJ TOTAL	3,452	3,380	9,877	24,599	34,476	2,113	36,589	(1.2)	(3.0)	

Total WFNJ/TANF Families
MAY 2009
By County



As of Nov 2004, data is derived and further refined from NJ Division of Family Development Issuance files.

‡ Child-only cases are defined as families where no eligible adult receives TANF program benefits, yet the family continues to be headed by at least one of the biological parents, or grandparents, or other appropriate adult

** "Cases closed" include cases that received a benefit in the prior month, but did not receive any TANF benefit for the report month.

Δ=higher caseload % change

*=lower caseload % change

Table 2B**WFNJ/TANF
PROGRAM**

Δ = ↑ Caseload %

* = ↓ Caseload %

**NUMBER OF PARTICIPATING PERSONS, ADULTS, AND CHILDREN
BY COUNTY FOR MAY 2009****PERSONS**

County	Adults	Children	Child/Adult Ratio	Total Persons	% Chng (1 Yr)	Persons Per Case
ATLANTIC	1,605	3,547	2.21	5,152	7.0	2.62
BERGEN	942	1,755	1.86	2,697	3.5	2.45
BURLINGTON	768	1,735	2.26	2,503	9.3	2.48
CAMDEN	2,874	6,875	2.39	9,749	(3.2)	2.52
CAPE MAY	400	792	1.98	1,192	20.9	2.65
CUMBERLAND	1,076	2,828	2.63	3,904	(1.6)	2.58
ESSEX	6,512	13,495	2.07	20,007	(8.6) *	2.56
GLOUCESTER	879	1,746	1.99	2,625	1.1	2.55
HUDSON	3,792	8,153	2.15	11,945	(6.1)	2.45
HUNTERDON	88	175	1.99	263	46.1 Δ	2.60
MERCER	1,804	3,962	2.20	5,766	(0.1)	2.52
MIDDLESEX	1,013	2,610	2.58	3,623	11.1	2.43
MONMOUTH	890	2,131	2.39	3,021	(3.6)	2.57
MORRIS	262	528	2.02	790	0.4	2.57
OCEAN	757	1,817	2.40	2,574	24.1 Δ	2.52
PASSAIC	2,472	5,663	2.29	8,135	(8.7) *	2.61
SALEM	410	899	2.19	1,309	7.7	2.55
SOMERSET	334	772	2.31	1,106	11.5	2.56
SUSSEX	188	350	1.86	538	30.3 Δ	2.54
UNION	1,503	3,508	2.33	5,011	(11.4) *	2.51
WARREN	256	507	1.98	763	14.2	2.74
NJ TOTAL	28,825	63,848	2.22	92,673	(2.4)	2.53

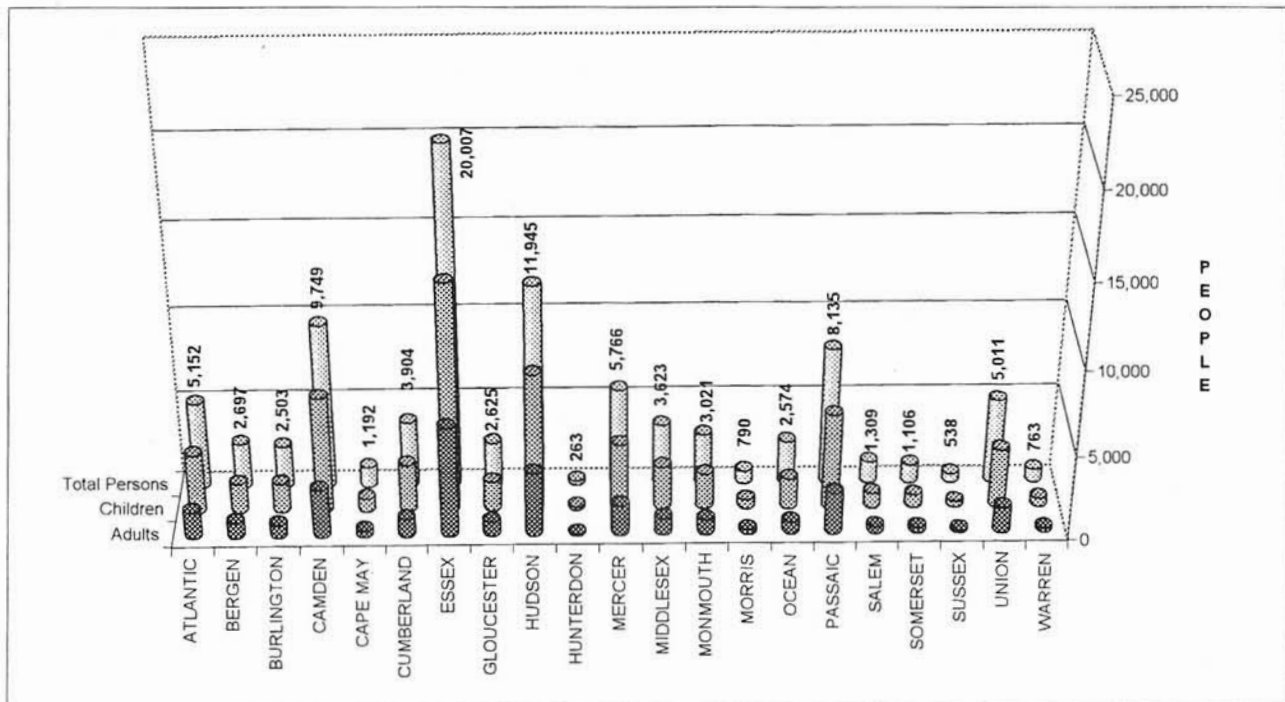


TABLE 3

**Work Participation Rates Achieved Over 12 Month Period
Ending With MAY 2009**

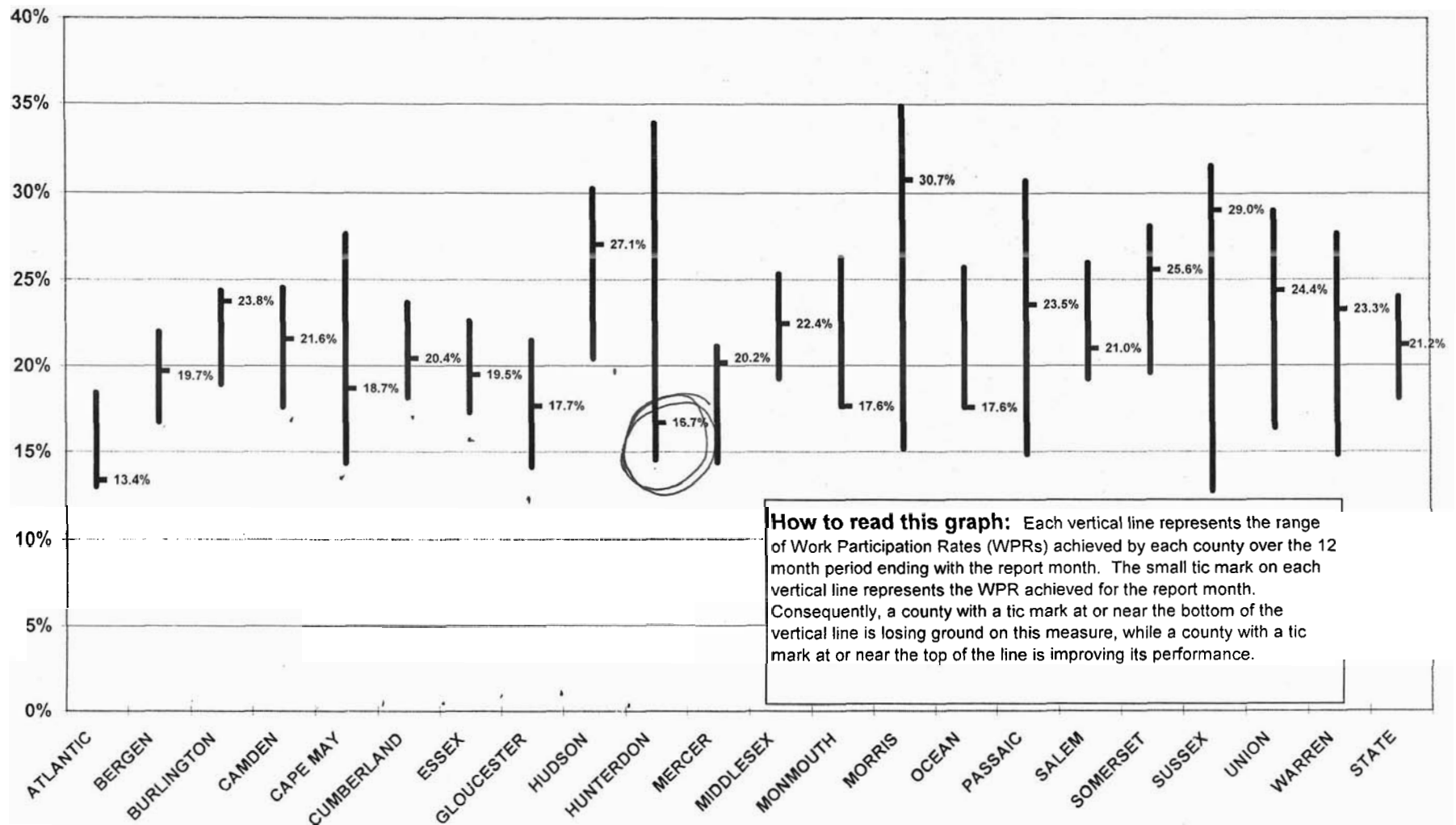
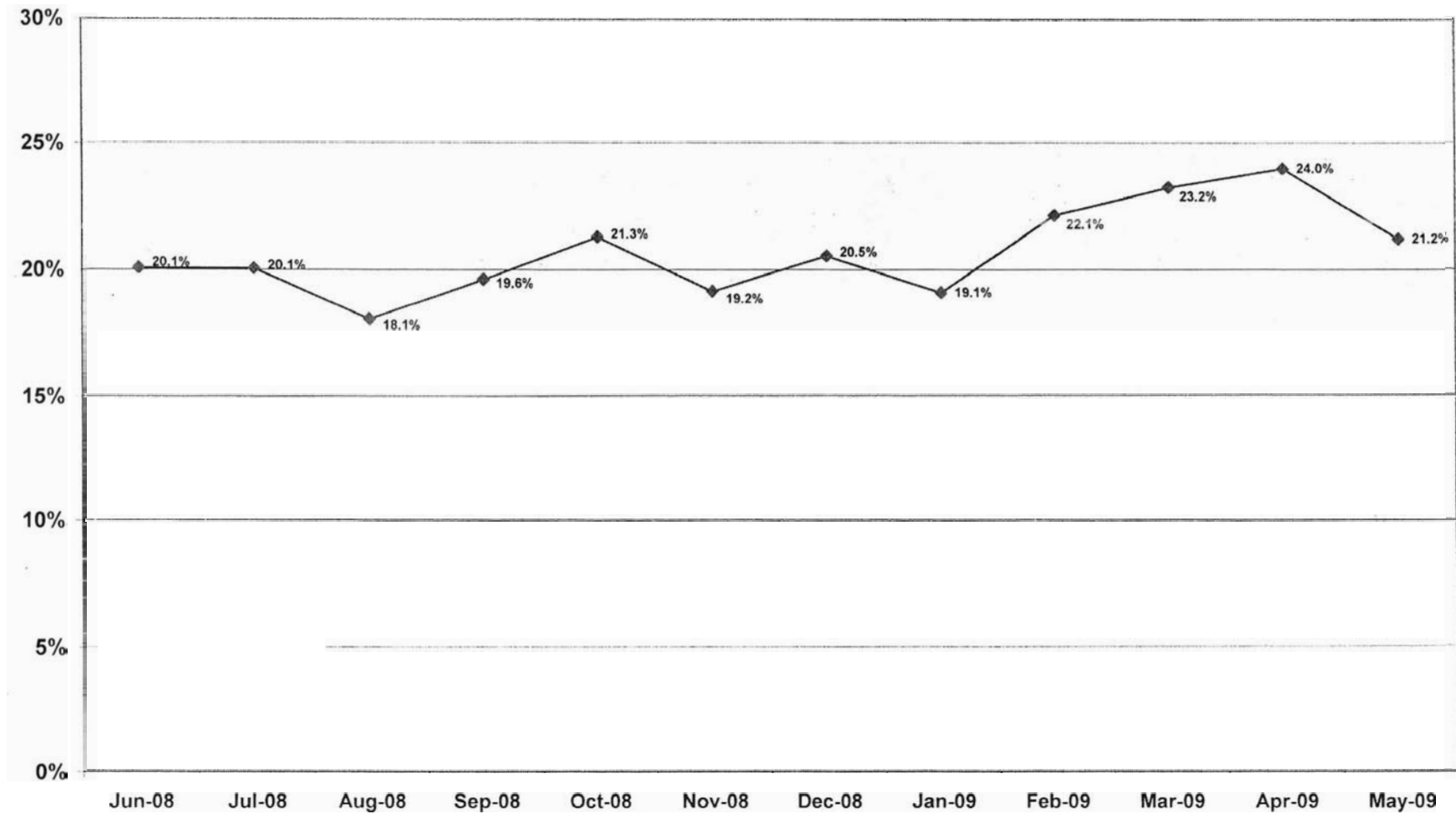


TABLE 4

**WFNJ/TANF Work Participation Rates
for 12-Month Period Ending with MAY 2009
Statewide**



**Table 5
FOOD STAMP
PROGRAM****NUMBER OF PARTICIPATING HOUSEHOLDS, PERSONS, ADULTS
AND CHILDREN FOR MAY 2009 (STATEWIDE)
MAY 2007 THROUGH MAY 2009**

		HOUSEHOLDS				PERSONS			
		WFNJ/ TANF	Other low income	TOTAL	% CHNG (1 Yr.)	Adults	Children	TOTAL	% CHNG (1 Yr.)
2007	MAY	35,136	165,179	200,315	2.7%	204,956	207,162	412,118	2.3%
	JUN	35,111	166,347	201,458	3.9%	206,132	208,790	414,922	3.6%
	JUL	35,066	166,824	201,890	3.6%	206,626	210,271	416,897	3.4%
	AUG	35,143	167,026	202,169	3.0%	206,859	210,577	417,436	2.7%
	SEP	35,038	167,220	202,258	3.3%	206,850	210,814	417,664	3.0%
	OCT	35,452	168,146	203,598	3.8%	208,036	212,130	420,166	3.5%
	NOV	34,764	166,383	201,147	2.5%	205,891	209,288	415,179	2.0%
	DEC	35,114	169,685	204,799	3.9%	209,562	213,389	422,951	3.5%
2007 AVERAGE		35,140	165,211	200,351		205,278	208,022	413,299	
2008	JAN	35,276	170,851	206,127	5.1%	210,562	214,515	425,077	4.7%
	FEB	34,096	169,397	203,493	4.8%	207,967	210,497	418,464	4.4%
	MAR	34,490	172,794	207,284	4.6%	211,480	214,434	425,914	4.4%
	APR	34,584	174,733	209,317	5.6%	213,476	215,928	429,404	5.3%
	MAY	34,563	176,840	211,403	5.5%	215,426	218,058	433,484	5.2%
	JUN	34,579	179,354	213,933	6.2%	218,236	220,325	438,561	5.7%
	JUL	35,061	180,889	215,950	7.0%	220,464	222,376	442,840	6.2%
	AUG	35,222	183,313	218,535	8.1%	223,468	225,195	448,663	7.5%
	SEP	34,468	184,229	218,697	8.1%	223,461	225,638	449,099	7.5%
	OCT	33,710	187,758	221,468	8.8%	226,814	229,196	456,010	8.5%
	NOV	33,927	190,913	224,840	11.8%	230,439	232,556	462,995	11.5%
	DEC	34,649	196,287	230,936	12.8%	236,701	238,148	474,849	12.3%
2008 AVERAGE		34,552	180,613	215,165		219,875	222,239	442,113	
2009	JAN	34,395	198,019	232,414	12.8%	237,816	239,202	477,018	12.2%
	FEB	33,755	200,808	234,563	15.3%	239,844	240,879	480,723	14.9%
	MAR	33,746	205,701	239,447	15.5%	244,291	245,228	489,519	14.9%
	APR	33,416	206,939	240,355	14.8%	244,875	244,931	489,806	14.1%
	MAY	33,284	212,527	245,811	16.3%	250,580	251,737	502,317	15.9%
2009 AVG to date		33,719	204,799	238,518		243,481	244,395	487,877	

**TABLE 6: FOOD STAMP PROGRAM
TRENDS FOR PARTICIPATING HOUSEHOLDS & PERSONS
MAY 2007 THROUGH MAY 2009 (STATEWIDE)**

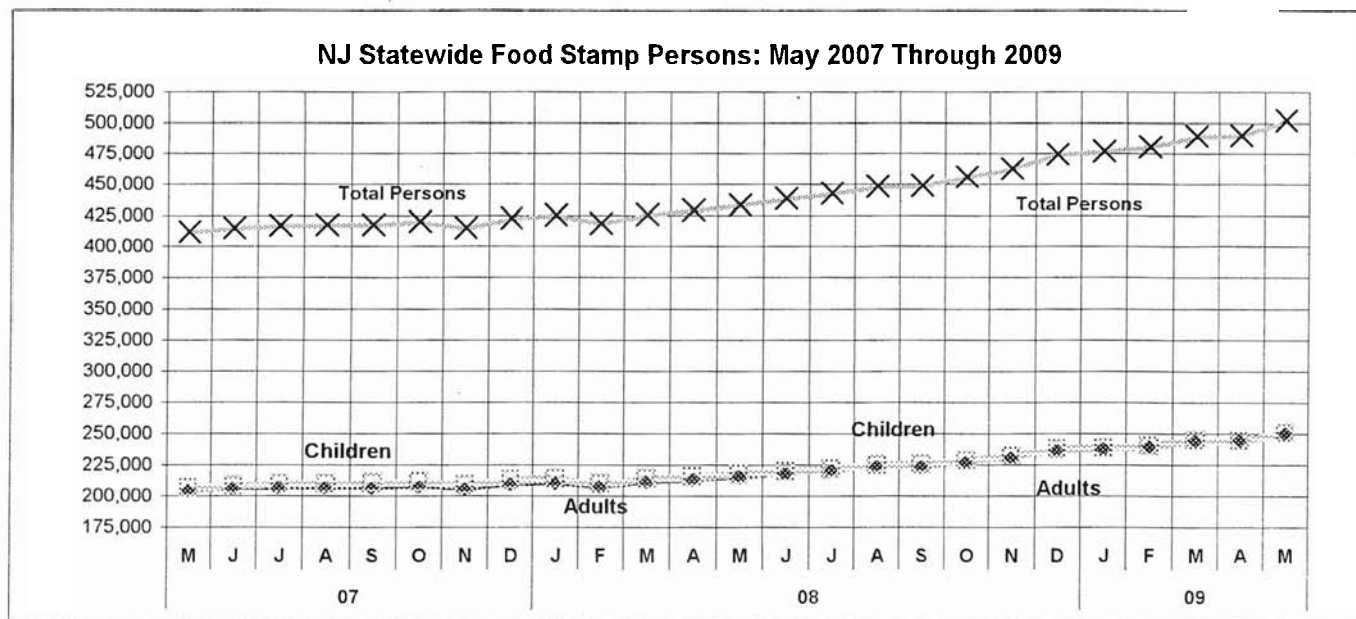
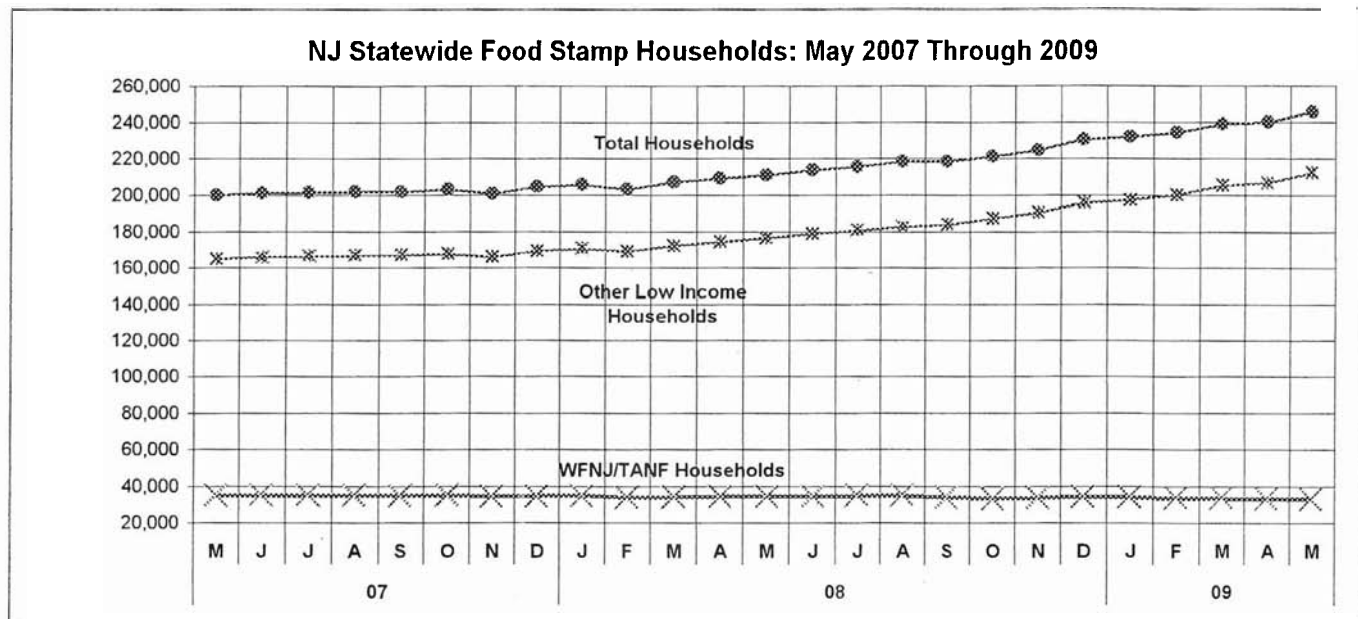


Table 7 **NUMBER OF PARTICIPATING HOUSEHOLDS, PERSONS, ADULTS AND CHILDREN BY COUNTY FOR MAY 2009**

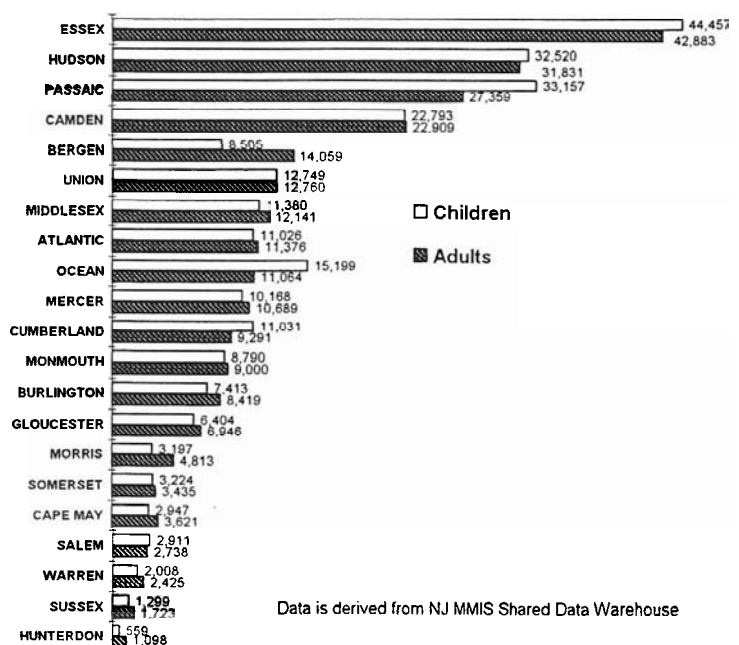
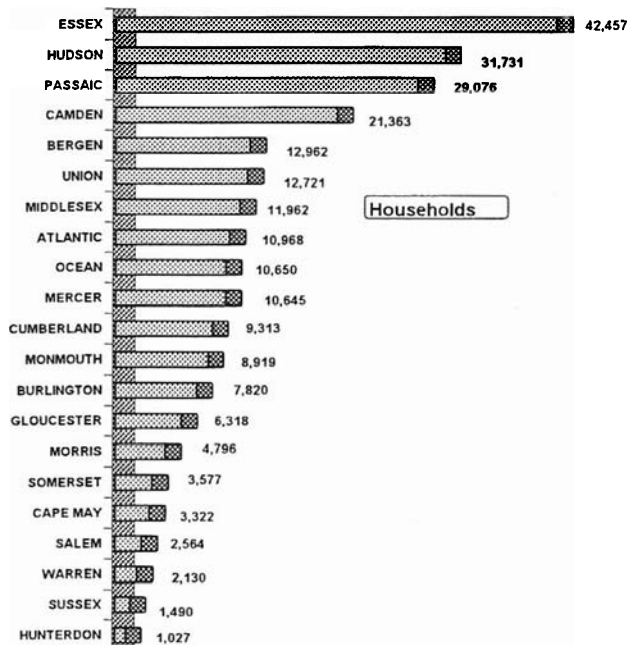
FOOD STAMP**PROGRAM**

Δ = ↑ Caseload %

* = ↓ Caseload %

County	HOUSEHOLDS				PERSONS			
	WFNJ/ TANF	Other low income	TOTAL	% Chng (1 Yr)	Adults	Children	TOTAL	% Chng (1 Yr)
ATLANTIC	1,653	9,315	10,968	5.4 *	11,376	11,026	22,402	8.8 *
BERGEN	978	11,984	12,962	17.9	14,059	8,505	22,564	21.2
BURLINGTON	881	6,939	7,820	27.3 Δ	8,419	7,413	15,832	30.8 Δ
CAMDEN	3,529	17,834	21,363	9.5 *	22,909	22,793	45,702	8.2 *
CAPE MAY	406	2,916	3,322	19.4	3,621	2,947	6,568	23.4
CUMBERLAND	1,296	8,017	9,313	14.0	9,291	11,031	20,322	12.9
ESSEX	7,721	34,736	42,457	19.1	42,883	44,457	87,340	15.3
GLOUCESTER	903	5,415	6,318	21.9	6,946	6,404	13,350	21.3
HUDSON	4,514	27,217	31,731	13.4	31,831	32,520	64,351	13.2
HUNTERDON	90	937	1,027	44.0 Δ	1,098	559	1,657	42.4 Δ
MERCER	2,055	8,590	10,645	17.2	10,689	10,168	20,857	15.9
MIDDLESEX	1,315	10,647	11,962	20.3	12,141	11,380	23,521	22.8
MONMOUTH	1,063	7,856	8,919	17.4	9,000	8,790	17,790	16.5
MORRIS	275	4,521	4,796	23.5	4,813	3,197	8,010	23.9
OCEAN	879	9,771	10,650	22.1	11,064	15,199	26,263	24.6
PASSAIC	2,761	26,315	29,076	13.9	27,359	33,157	60,516	13.3
SALEM	443	2,121	2,564	15.4	2,738	2,911	5,649	20.8
SOMERSET	353	3,224	3,577	28.1 Δ	3,435	3,224	6,659	29.6 Δ
SUSSEX	188	1,302	1,490	24.5	1,723	1,299	3,022	26.9
UNION	1,734	10,987	12,721	15.2	12,760	12,749	25,509	14.5
WARREN	247	1,883	2,130	12.8 *	2,425	2,008	4,433	12.6 *
NJ TOTAL	33,284	212,527	245,811	16.3	250,580	251,737	502,317	15.9

**Total Food Stamp Recipients
MAY 2009 By County**



Data is derived from NJ MMIS Shared Data Warehouse

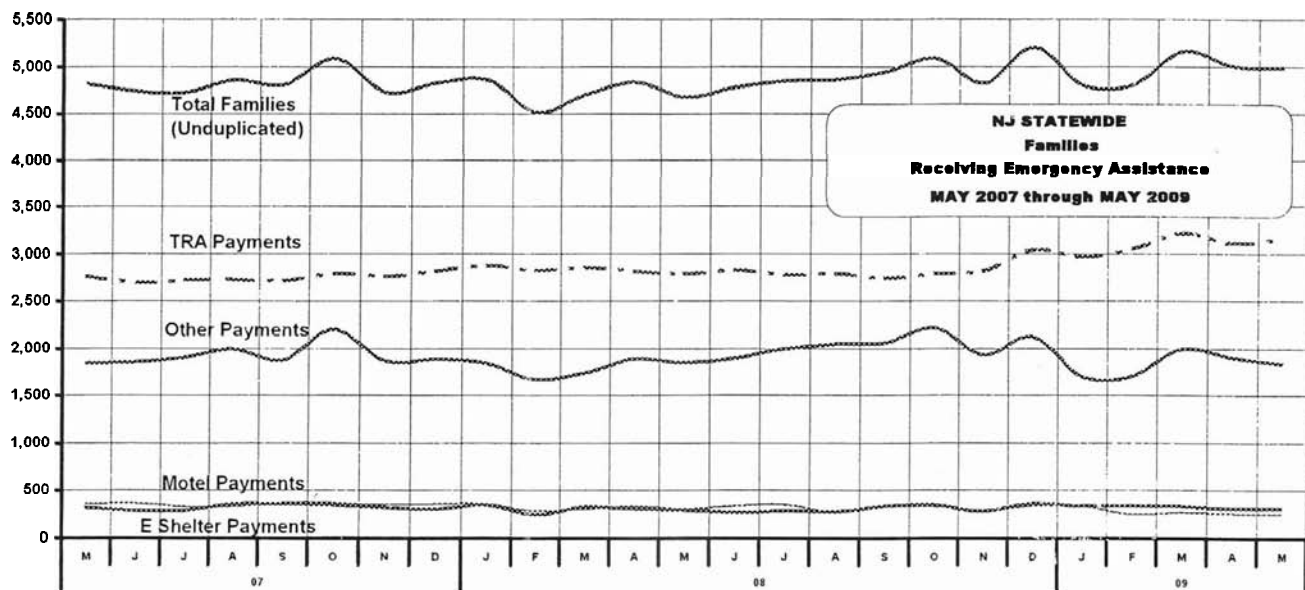
Table 8

TOTAL NUMBER OF ELIGIBLE FAMILIES RECEIVING EMERGENCY ASSISTANCE PAYMENTS

EMERGENCY
ASSISTANCE

MAY 2007 THROUGH MAY 2009 - STATEWIDE

		TOTAL WFNJ/EA		Temp Rent Asst.		Motel Housing		Emergency Shelter		Other EA	
		Families (Undupl)	% CHNG (1 YR)	Payments (Undupl)	% CHNG (1 YR)	Payments (Undupl)	% CHNG (1 YR)	Payments (Undupl)	% CHNG (1 YR)	Payments (Undupl)	% CHNG (1 YR)
2007	MAY	4,821	-11.3%	2,765	-13.9%	329	-36.1%	357	-4.5%	1,846	-0.9%
	JUN	4,748	-12.9%	2,698	-15.7%	292	-41.5%	368	0.5%	1,860	-2.9%
	JUL	4,732	-6.8%	2,724	-11.5%	293	-29.7%	330	4.8%	1,910	11.2%
	AUG	4,859	-8.0%	2,735	-10.6%	358	-23.8%	330	-18.5%	2,000	4.5%
	SEP	4,815	-8.3%	2,719	-9.5%	357	-31.3%	374	-2.6%	1,886	0.7%
	OCT	5,089	-3.5%	2,796	-6.2%	353	-17.3%	374	1.6%	2,202	5.9%
	NOV	4,731	-10.7%	2,767	-4.3%	328	-33.6%	351	-24.2%	1,875	-6.5%
	DEC	4,837	-4.5%	2,823	-4.9%	303	-38.8%	360	-4.5%	1,892	5.8%
2007 AVERAGE		4,782		2,788		340		354		1,818	
2008	JAN	4,859	-1.0%	2,881	-1.0%	355	-15.9%	361	1.4%	1,847	6.1%
	FEB	4,524	2.5%	2,830	-0.9%	253	-27.9%	285	-2.7%	1,675	25.4%
	MAR	4,711	-1.6%	2,860	-0.1%	335	-6.7%	308	-23.2%	1,749	4.2%
	APR	4,842	4.1%	2,822	0.6%	315	-7.4%	342	-4.5%	1,896	19.2%
	MAY	4,686	-2.8%	2,796	1.1%	297	-9.7%	303	-15.1%	1,859	0.7%
	JUN	4,789	0.9%	2,834	5.0%	270	-7.5%	341	-7.3%	1,905	2.4%
	JUL	4,857	2.6%	2,779	2.0%	289	-1.4%	356	7.9%	2,008	5.1%
	AUG	4,869	0.2%	2,791	2.0%	281	-21.5%	274	-17.0%	2,056	2.8%
	SEP	4,946	2.7%	2,750	1.1%	340	-4.8%	330	-11.8%	2,066	9.5%
	OCT	5,094	0.1%	2,794	-0.1%	351	-0.6%	332	-11.2%	2,223	1.0%
	NOV	4,824	2.0%	2,821	2.0%	288	-12.2%	294	-16.2%	1,938	3.4%
	DEC	5,205	7.6%	3,044	7.8%	369	21.8%	337	-6.4%	2,129	12.5%
2008 AVERAGE		4,851		2,834		312		322		1,946	
2009	JAN	4,808	-1.0%	2,969	3.1%	342	-3.7%	340	-5.8%	1,706	-7.6%
	FEB	4,813	6.4%	3,056	8.0%	342	35.2%	254	-10.9%	1,710	2.1%
	MAR	5,170	9.7%	3,224	12.7%	342	2.1%	274	-11.0%	2,003	14.5%
	APR	5,009	3.4%	3,123	10.7%	312	-1.0%	258	-24.6%	1,908	0.6%
	MAY	4,991	6.5%	3,164	13.2%	313	5.4%	251	-17.2%	1,839	-1.1%
2009 AVG to date		4,958		3,107		330		275		1,833	



WFNJ/EA data is derived from NJ Division of Family Development Issuance files.

Table 9
SSI
EMERGENCY
ASSISTANCE

**NUMBER OF TOTAL ELIGIBLE FAMILIES RECEIVING EMERGENCY ASSISTANCE PAYMENTS
BY COUNTY (UNDUPLICATED CASES) MAY 2009**

County	TOTAL WFNJ/EA Families (Undupl)	% CHNG From May 08	Temp Rent Asst. Payments (Undupl)	Motel Housing Payments (Undupl)	Emergency Shelter Payments (Undupl)	Other WFNJ/EA Payments (Undupl)	SSI Recipients Receiving EA**
ATLANTIC	385	33.7%	307	32	10	107	78
BERGEN	264	-4.0%	179	2	0	108	183
BURLINGTON	199	26.8%	48	51	0	128	115
CAMDEN	291	21.8%	170	46	29	95	34
CAPE MAY	141	110.4% Δ	70	53	0	32	84
CUMBERLAND	44	-18.5% *	23	1	4	25	10
ESSEX	1,325	4.5%	959	0	99	401	262
GLOUCESTER	160	61.6%	114	8	27	41	50
HUDSON	422	-10.8%	318	6	6	111	14
HUNTERDON	38	72.7% Δ	31	4	2	10	27
MERCER	516	-6.0%	295	10	0	270	227
MIDDLESEX	148	-25.3% *	53	12	13	82	73
MONMOUTH	85	-11.5% *	10	27	0	59	17
MORRIS	38	22.6%	24	5	3	12	7
OCEAN	137	0.0%	99	25	0	23	58
PASSAIC	289	-4.6%	94	7	22	198	148
SALEM	55	7.8%	39	3	0	18	10
SOMERSET	99	23.8%	65	6	2	38	40
SUSSEX	77	79.1% Δ	58	5	5	29	26
UNION	224	12.0%	165	6	26	42	34
WARREN	54	-3.6%	43	4	3	10	7
NJ TOTAL	4,991	6.5%	3,164	313	251	1,839	1,504

Δ = ↑ Caseload %

* = ↓ Caseload %

**SSI-EA includes pay code 24 and is derived from NJ Division of Family Development FAMIS Report #FM430-03A

As of Nov 2004, WFNJ/EA data is derived from NJ Division of Family Development Issuance files.

**Number WFNJ Families Receiving EA by County
MAY 2009**

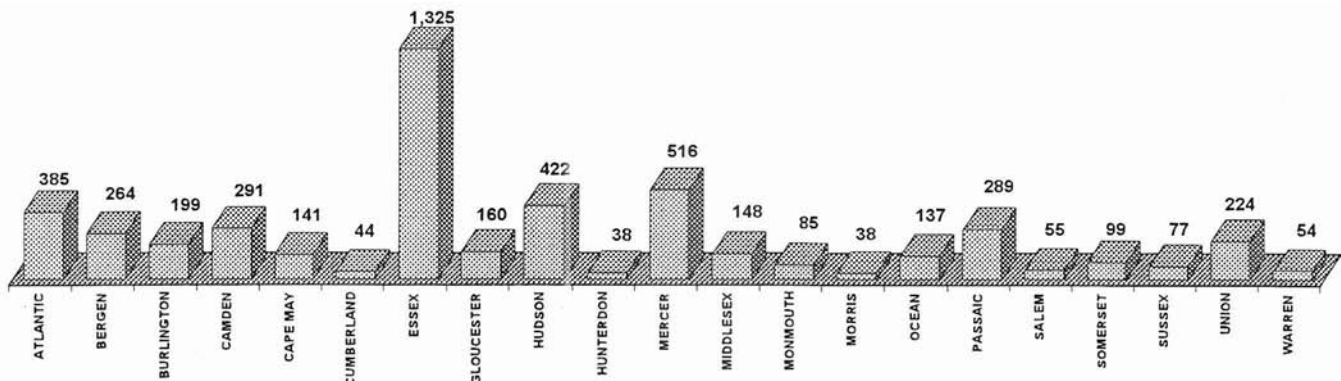


Table 10 **NUMBER OF EMPLOYABLE AND UNEMPLOYABLE RECIPIENTS**
GENERAL ASSISTANCE PROGRAM **AND EMERGENCY ASSISTANCE PAYMENTS FOR MAY 2009 - STATEWIDE**
MAY 2007 THROUGH MAY 2009

		All Cases Aided						Emergency Assistance Payments			
		Employable	% Chng (1 Yr)	Unemployable	% Chng (1 Yr)	Total	% Chng (1 Yr)	Temporary Rental Assistance	Other GA-EA	Total	% Chng (1 Yr)
2007	MAY	22,323	1.8%	15,586	0.1%	37,909	1.1%	3,016	4,084	7,100	-4.5%
	JUN	21,866	0.5%	15,993	2.7%	37,859	1.4%	3,020	3,936	6,956	-2.8%
	JUL	21,705	1.9%	16,135	5.4%	37,840	3.3%	3,004	3,807	6,811	1.3%
	AUG	22,151	2.8%	16,273	4.1%	38,424	3.3%	2,994	3,942	6,936	-4.8%
	SEP	21,835	4.7%	16,326	7.2%	38,161	5.7%	2,887	3,674	6,561	1.1%
	OCT	22,040	2.5%	16,462	3.9%	38,502	3.1%	2,886	4,000	6,886	0.8%
	NOV	21,927	7.8%	16,366	6.5%	38,293	7.3%	2,859	3,460	6,319	-2.9%
	DEC	22,371	5.9%	16,509	7.1%	38,880	6.4%	2,961	4,001	6,962	7.7%
2007 AVERAGE		21,966		15,902		37,867		2,957	3,871	6,827	
2008	JAN	22,692	5.5%	16,740	8.6%	39,432	6.8%	2,910	4,094	7,004	3.3%
	FEB	22,958	6.8%	16,562	9.5%	39,520	7.9%	2,944	3,835	6,779	4.3%
	MAR	23,155	4.2%	16,802	9.3%	39,957	6.3%	3,041	4,063	7,104	-2.6%
	APR	23,717	7.1%	17,111	12.2%	40,828	9.2%	3,136	4,326	7,462	9.4%
	MAY	23,929	7.2%	17,405	11.7%	41,334	9.0%	3,180	4,445	7,625	7.4%
	JUN	24,148	10.4%	17,525	9.6%	41,673	10.1%	3,155	4,361	7,516	8.1%
	JUL	24,478	12.8%	17,658	9.4%	42,136	11.4%	3,034	3,874	6,908	1.4%
	AUG	24,942	12.6%	17,506	7.6%	42,448	10.5%	3,047	4,023	7,070	1.9%
	SEP	25,387	16.3%	17,232	5.5%	42,619	11.7%	3,052	4,214	7,266	10.7%
	OCT	25,502	15.7%	17,389	5.6%	42,891	11.4%	3,230	4,143	7,373	7.1%
	NOV	26,120	19.1%	17,346	6.0%	43,466	13.5%	3,284	3,709	6,993	10.7%
	DEC	27,331	22.2%	17,645	6.9%	44,976	15.7%	3,400	4,138	7,538	8.3%
2008 AVERAGE		24,530		17,243		41,773		3,118	4,102	7,220	
2009	JAN	27,853	22.7%	17,471	4.4%	45,324	14.9%	3,461	4,069	7,530	7.5%
	FEB	28,124	22.5%	17,354	4.8%	45,478	15.1%	3,545	3,595	7,140	5.3%
	MAR	28,936	25.0%	17,438	3.8%	46,374	16.1%	3,823	4,181	8,004	12.7%
	APR	29,555	24.6%	17,448	2.0%	47,003	15.1%	3,846	4,085	7,931	6.3%
	MAY	29,878	24.9%	17,466	0.4%	47,344	14.5%	3,863	4,342	8,205	7.6%
2009 AVG to date		28,869		17,435		46,305		3,708	4,054	7,762	

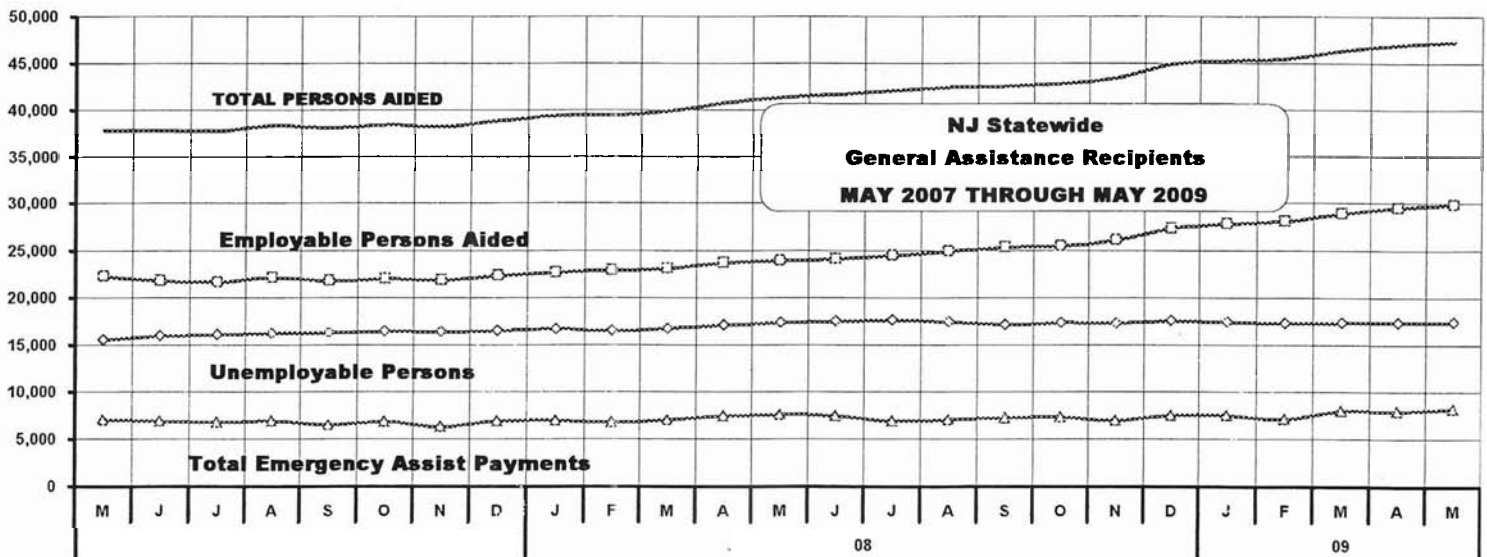


TABLE 11**GENERAL
ASSISTANCE
PROGRAM****EMPLOYABLE AND UNEMPLOYABLE RECIPIENTS
AND EMERGENCY ASSISTANCE PAYMENTS BY COUNTY****MAY 2009**

County	Total Cases Aided						Emergency Assistance Payments			
	Employable	% Chng (From May 08)	Unemployable	% Chng (From May 08)	Total	% Chng (From May 08)	Temporary Rental Assist.	Other GA-EA	Total	% Chng (From May 08)
ATLANTIC	1,937	-4.3%	1,253	-9.7%	3,190	-6.5% *	323	129	452	8.9%
BERGEN	754	16.5%	688	-1.0%	1,442	7.5%	321	85	406	6.6%
BURLINGTON	1,070	24.0%	744	2.2%	1,814	14.0%	74	356	430	24.6%
CAMDEN	3,135	1.0%	2,407	10.4%	5,542	4.8%	481	234	715	-11.5%
CAPE MAY	675	12.3%	204	10.9%	879	12.0%	170	220	390	31.8%
CUMBERLAND	1,387	3.2%	747	3.8%	2,134	3.4%	41	100	141	85.5% Δ
ESSEX	8,161	104.8%	2,016	1.0%	10,177	70.2% Δ	775	1,022	1,797	22.4%
GLOUCESTER	715	19.6%	526	14.1%	1,241	17.2%	87	183	270	42.9%
HUDSON	2,133	30.9%	1,823	-4.5%	3,956	11.8%	169	57	226	-24.4% *
HUNTERDON	200	92.3%	161	13.4%	361	46.7% Δ	88	97	185	52.9% Δ
MERCER	1,676	16.6%	1,036	-6.5%	2,712	6.5%	296	291	587	-4.4%
MIDDLESEX	393	-19.5%	630	-15.8%	1,023	-17.2% *	172	159	331	-15.8%
MONMOUTH	626	6.1%	570	-0.2%	1,196	3.0%	49	205	254	-5.2%
MORRIS	437	37.0%	435	6.6%	872	19.9%	156	122	278	55.3% Δ
OCEAN	979	31.8%	889	12.0%	1,868	21.5%	183	111	294	-7.5%
PASSAIC	3,005	15.7%	1,387	-10.5%	4,392	5.9%	15	476	491	8.4%
SALEM	364	4.0%	235	-9.3%	599	-1.6%	39	80	119	-30.0% *
SOMERSET	296	60.0%	254	1.6%	550	26.4%	82	68	150	6.4%
SUSSEX	212	49.3%	159	13.6%	371	31.6% Δ	67	86	153	31.9%
UNION	1,502	-22.3%	1,100	11.3%	2,602	-11.0% *	213	221	434	-1.4%
WARREN	221	-8.7%	202	9.2%	423	-0.9%	62	40	102	-24.4% *
NJ TOTAL	29,878	24.9%	17,466	0.4%	47,344	14.5%	3,863	4,342	8,205	7.6%

Δ = ↑ Caseload %

* = ↓ Caseload %

Source: NJ Division of Family Development, GA Fiscal Unit

TABLE 12**CHILD SUPPORT
AND PATERNITY****CHILD SUPPORT AND PATERNITY COLLECTIONS****State Summary**Comparison of FFY 2007 and FFY 2008

COLLECTION SOURCE	10/06-09/07	10/07-09/08	Dollar Change	% Change
Federal Tax	\$2,567,145	\$14,323,631	\$11,756,486	458.0%
State Tax	3,641,344	2,066,124	(1,575,220)	-43.3%
Unempl. Ins. Ben.	7,644,595	12,904,489	5,259,894	68.8%
Income Withholding	178,962,109	184,799,551	5,837,442	3.3%
From Other States	12,693,519	14,183,147	1,489,628	11.7%
Other/Own Behalf	61,001,374	58,800,517	(2,200,857)	-3.6%
Admin Enforce				
TOTAL COLLECTION	\$266,510,086	\$287,077,459	\$20,567,373	7.7%
TOTAL DISTRIBUTION*	\$259,563,763	\$293,671,283	\$34,107,520	13.1%

* Includes money sent to other states

Distributed amount represents collections reported and recognized by the Federal Office of
Child Support Enforcement for calculating incentives and annual report to Congress
Source: DFD Office of Child Support and Paternity Programs

TABLE 13
CHILD SUPPORT
AND PATERNITY

PERCENTAGE OF CASES WITH ORDERS
MAY 2009

Source		CURRENT ASSISTANCE			FORMER ASSISTANCE			NEVER ASSISTED			TOTAL ASSISTANCE		
		TOTAL CASES	CASES WITH ORDERS	% of CASES WITH ORDERS	TOTAL CASES	CASES WITH ORDERS	% of CASES WITH ORDERS	TOTAL CASES	CASES WITH ORDERS	% of CASES WITH ORDERS	TOTAL CASES	CASES WITH ORDERS	% of CASES WITH ORDERS
ATLANTIC	ACSES	2,271	1,324	58%	5,273	4,850	92%	6,593	5,842	89%	14,137	12,016	85%
	NJKIDS	0	0	0%	0	0	0%	0	0	0%	0	0	0%
	TOTAL	2,271	1,324	58%	5,273	4,850	92%	6,593	5,842	89%	14,137	12,016	85%
BERGEN	ACSES	554	364	66%	789	755	96%	560	529	94%	1,903	1,648	87%
	NJKIDS	659	378	57%	2,625	2,483	95%	8,378	8,017	96%	11,662	10,878	93%
	TOTAL	1,213	742	61%	3,414	3,238	95%	8,938	8,546	96%	13,565	12,526	92%
BURLINGTON	ACSES	1,940	1,161	60%	6,090	5,766	95%	8,750	8,036	92%	16,780	14,963	89%
	NJKIDS	0	0	0%	0	0	0%	0	0	0%	0	0	0%
	TOTAL	1,940	1,161	60%	6,090	5,766	95%	8,750	8,036	92%	16,780	14,963	89%
CAMDEN	ACSES	6,476	3,392	52%	20,393	18,350	90%	11,347	9,679	85%	38,216	31,421	82%
	NJKIDS	0	0	0%	0	0	0%	0	0	0%	0	0	0%
	TOTAL	6,476	3,392	52%	20,393	18,350	90%	11,347	9,679	85%	38,216	31,421	82%
CAPE MAY	ACSES	479	298	62%	1,442	1,402	97%	1,774	1,679	95%	3,695	3,379	91%
	NJKIDS	0	0	0%	0	0	0%	0	0	0%	0	0	0%
	TOTAL	479	298	62%	1,442	1,402	97%	1,774	1,679	95%	3,695	3,379	91%
CUMBERLAND	ACSES	1,903	1,553	82%	8,669	8,512	98%	4,047	3,706	92%	14,619	13,771	94%
	NJKIDS	0	0	0%	0	0	0%	0	0	0%	0	0	0%
	TOTAL	1,903	1,553	82%	8,669	8,512	98%	4,047	3,706	92%	14,619	13,771	94%
ESSEX	ACSES	11,968	5,299	44%	28,029	24,517	87%	16,063	13,888	86%	56,060	43,704	78%
	NJKIDS	0	0	0%	0	0	0%	0	0	0%	0	0	0%
	TOTAL	11,968	5,299	44%	28,029	24,517	87%	16,063	13,888	86%	56,060	43,704	78%
GLOUCESTER	ACSES	1,533	1,088	71%	4,786	4,631	97%	4,752	4,569	96%	11,071	10,288	93%
	NJKIDS	0	0	0%	0	0	0%	0	0	0%	0	0	0%
	TOTAL	1,533	1,088	71%	4,786	4,631	97%	4,752	4,569	96%	11,071	10,288	93%
HUDSON	ACSES	5,426	2,146	40%	12,901	11,331	88%	11,565	9,502	82%	29,892	22,979	77%
	NJKIDS	0	0	0%	0	0	0%	0	0	0%	0	0	0%
	TOTAL	5,426	2,146	40%	12,901	11,331	88%	11,565	9,502	82%	29,892	22,979	77%
HUNTERDON	ACSES	84	54	64%	71	66	93%	80	68	85%	235	188	80%
	NJKIDS	76	41	54%	330	284	86%	1,293	1,258	97%	1,699	1,583	93%
	TOTAL	160	95	59%	401	350	87%	1,373	1,326	97%	1,934	1,771	92%
MERCER	ACSES	3,373	1,755	52%	8,352	7,727	93%	6,544	5,639	86%	18,269	15,121	83%
	NJKIDS	0	0	0%	0	0	0%	0	0	0%	0	0	0%
	TOTAL	3,373	1,755	52%	8,352	7,727	93%	6,544	5,639	86%	18,269	15,121	83%
MIDDLESEX	ACSES	2,165	1,204	56%	7,691	7,111	92%	10,074	9,310	92%	19,930	17,625	88%
	NJKIDS	0	0	0%	0	0	0%	0	0	0%	0	0	0%
	TOTAL	2,165	1,204	56%	7,691	7,111	92%	10,074	9,310	92%	19,930	17,625	88%
MONMOUTH	ACSES	2,275	1,436	63%	3,487	3,338	96%	992	889	90%	6,754	5,663	84%
	NJKIDS	674	461	68%	3,327	3,112	94%	7,095	6,728	95%	11,096	10,301	93%
	TOTAL	2,949	1,897	64%	6,814	6,450	95%	8,087	7,617	94%	17,850	15,964	89%
MORRIS	ACSES	164	94	57%	346	334	97%	207	188	91%	717	616	86%
	NJKIDS	220	145	66%	1,166	1,088	93%	4,338	4,226	97%	5,724	5,459	95%
	TOTAL	384	239	62%	1,512	1,422	94%	4,545	4,414	97%	6,441	6,075	94%
OCEAN	ACSES	1,136	854	75%	2,058	1,964	95%	873	803	92%	4,067	3,621	89%
	NJKIDS	734	439	60%	4,052	3,777	93%	7,973	7,581	95%	12,759	11,797	92%
	TOTAL	1,870	1,293	69%	6,110	5,741	94%	8,846	8,384	95%	16,826	15,418	92%
PASSAIC	ACSES	1,840	1,047	57%	4,033	3,723	92%	1,237	1,059	86%	7,110	5,829	82%
	NJKIDS	2,355	1,228	52%	7,359	6,402	87%	9,359	8,368	89%	19,073	15,998	84%
	TOTAL	4,195	2,275	54%	11,392	10,125	89%	10,596	9,427	89%	26,183	21,827	83%
SALEM	ACSES	820	609	74%	2,393	2,261	94%	1,491	1,403	94%	4,704	4,273	91%
	NJKIDS	0	0	0%	0	0	0%	0	0	0%	0	0	0%
	TOTAL	820	609	74%	2,393	2,261	94%	1,491	1,403	94%	4,704	4,273	91%
SOMERSET	ACSES	503	295	59%	949	850	90%	552	455	82%	2,004	1,600	80%
	NJKIDS	222	112	50%	1,059	867	82%	3,179	2,965	93%	4,460	3,944	88%
	TOTAL	725	407	56%	2,008	1,717	86%	3,731	3,420	92%	6,464	5,544	86%
SUSSEX	ACSES	161	125	78%	124	120	97%	94	79	84%	379	324	85%
	NJKIDS	183	111	61%	578	547	95%	2,014	1,939	96%	2,775	2,597	94%
	TOTAL	344	236	69%	702	667	95%	2,108	2,018	96%	3,154	2,921	93%
UNION	ACSES	3,263	1,675	51%	9,922	9,164	92%	9,952	9,316	94%	23,137	20,155	87%
	NJKIDS	0	0	0%	0	0	0%	0	0	0%	0	0	0%
	TOTAL	3,263	1,675	51%	9,922	9,164	92%	9,952	9,316	94%	23,137	20,155	87%
WARREN	ACSES	255	216	85%	287	280	98%	109	95	87%	651	591	91%
	NJKIDS	238	149	63%	1,032	985	95%	1,681	1,618	96%	2,951	2,752	93%
	TOTAL	493	365	74%	1,319	1,265	96%	1,790	1,713	96%	3,602	3,343	93%
CENTRAL	NJKIDS	58	21	36%	77	60	78%	80	44	55%	215	125	58%
NJ TOTAL		54,008	29,074	54%	149,690	136,657	91%	143,046	129,478	91%	346,744	295,209	85%

Data Sources: Automated Child Support Enforcement System

Table 14
WFNJ**WORK FIRST NEW JERSEY STATISTICAL SUMMARY****MAY 2009**

COUNTY	EMPLOYMENT DIRECTED ACTIVITIES			EMPLOYED OPEN (WFNJ RECIPIENT)	SUPPORT SERVICES ON ACTIVE CASE		CLOSED FOR EMPLOYMENT THIS MONTH	POST ASSISTANCE CHILD CARE
	CWEP	ALL OTHER TRAINING	JOB SEARCH		CHILD CARE	TRAINING REL. EXPENSES		
ATLANTIC	226	131	80	183	174	275	17	181
BERGEN	131	80	109	107	124	190	15	74
BURLINGTON	386	81	14	136	151	174	18	159
CAMDEN	689	337	120	312	484	693	53	425
CAPE MAY	49	10	36	64	21	53	6	37
CUMBERLAND	232	70	233	77	88	227	22	140
ESSEX	1,037	1,957	241	870	1,313	2,083	101	973
GLOUCESTER	99	19	59	109	104	13	10	155
HUDSON	620	989	118	444	746	1,018	70	548
HUNTERDON	40	7	20	11	13	3	7	12
MERCER	419	336	187	263	377	380	26	219
MIDDLESEX	298	63	185	184	146	277	32	151
MONMOUTH	288	126	91	154	261	284	16	226
MORRIS	27	15	14	63	53	33	6	58
OCEAN	180	70	90	65	139	146	8	147
PASSAIC	936	190	11	291	405	779	44	262
SALEM	66	25	15	65	56	95	20	71
SOMERSET	99	40	30	68	73	78	9	73
SUSSEX	65	5	15	29	23	39	4	33
UNION	425	182	58	174	215	330	28	224
WARREN	24	19	18	47	20	9	2	38
STATE	6,336	4,752	1,744	3,716	4,986	7,179	514	4,206

Data is derived from NJ Division of Family Development's OMEGA reports

**DIVISION OF FAMILY DEVELOPMENT CURRENT PROGRAM STATISTICS
MAY 2009**

ACRONYMS

ACSES: Automated Child Support Enforcement System

CASS: Consolidated Assistance and Support System

EMERGENCY ASSISTANCE (EA) - Payments to those eligible for WFNJ/TANF or WFNJ/GA, authorized during the 30 consecutive days immediately following the emergency (defined as a substantial loss of shelter, food, clothing, or household furnishings by fire, flood or other similar disaster) or if the eligible individual or family is in an imminent or actual state of homelessness.

FOOD STAMP PROGRAM (FS) - Authorized by Congress as a nutritional supplement program to provide low income households with more food of greater variety and better nutrition. Program eligibility is based on household income, resources, and expenses for medical, shelter, and dependent care. CWA staff refers certain recipients to the New Jersey Department of Labor for participation in the Food Stamp Employment and Training Program.

FAMIS: Family Assistance Management Information System

GAAS: General Assistance Automated System

OMEGA: Online Management of Economic Goal Achievement

SSI-EA: Supplemental Security Income-Emergency Assistance

WFNJ: Work First New Jersey - Fully implemented July 1, 1997, this is New Jersey's welfare reform program which responds to the requirements of the Federal Personal Responsibility and Work Opportunity Reconciliation Act (**PRWORA**) of 1996. PRWORA establishes Temporary Assistance for Needy Families (**TANF**) as the replacement for AFDC cash assistance. WFNJ includes two segments, **WFNJ/TANF** for families with children, and **WFNJ/GA** (General Assistance) for single adults and couples without dependent children. The emphasis is on achieving self-sufficiency and limits lifetime receipt of financial assistance to a total of five years.

EXPLANATORY NOTES

The Department of Human Services Division of Family Development provides basic income and an opportunity to achieve self-sufficiency for individuals and families served by the Division's programs. The Division provides leadership, direction and supervision to those public agencies responsible for administering those programs and plans for and develops policies to promote self-sufficiency.

**DIVISION OF FAMILY DEVELOPMENT CURRENT PROGRAM STATISTICS
MAY 2009**

WFNJ Statistical Summary (Table 14)

Employment Directed Activities (EDA) - From Activities Summary Report (OMEGA report # RM064). Unduplicated count of persons participating in Community Work Experience Program (CWEP), All Other Training, or Job Search.

Number of Persons Employed This Month, Still Receiving TANF – Individuals with open “empl” activity on OMEGA. Ad hoc report.

Participants Receiving Child Care Services - From Issuance Disbursement Summary (OMEGA report # RM703). Total number of active participants who show receipt of **Child Care**.

Number of Persons Closed on FAMIS Due to Employment- From FAMIS report # FM463.

Post TANF and Receiving Child Care - Persons no longer in receipt of TANF but still receiving child care. From Issuance Disbursement Summary (OMEGA report # RM703).