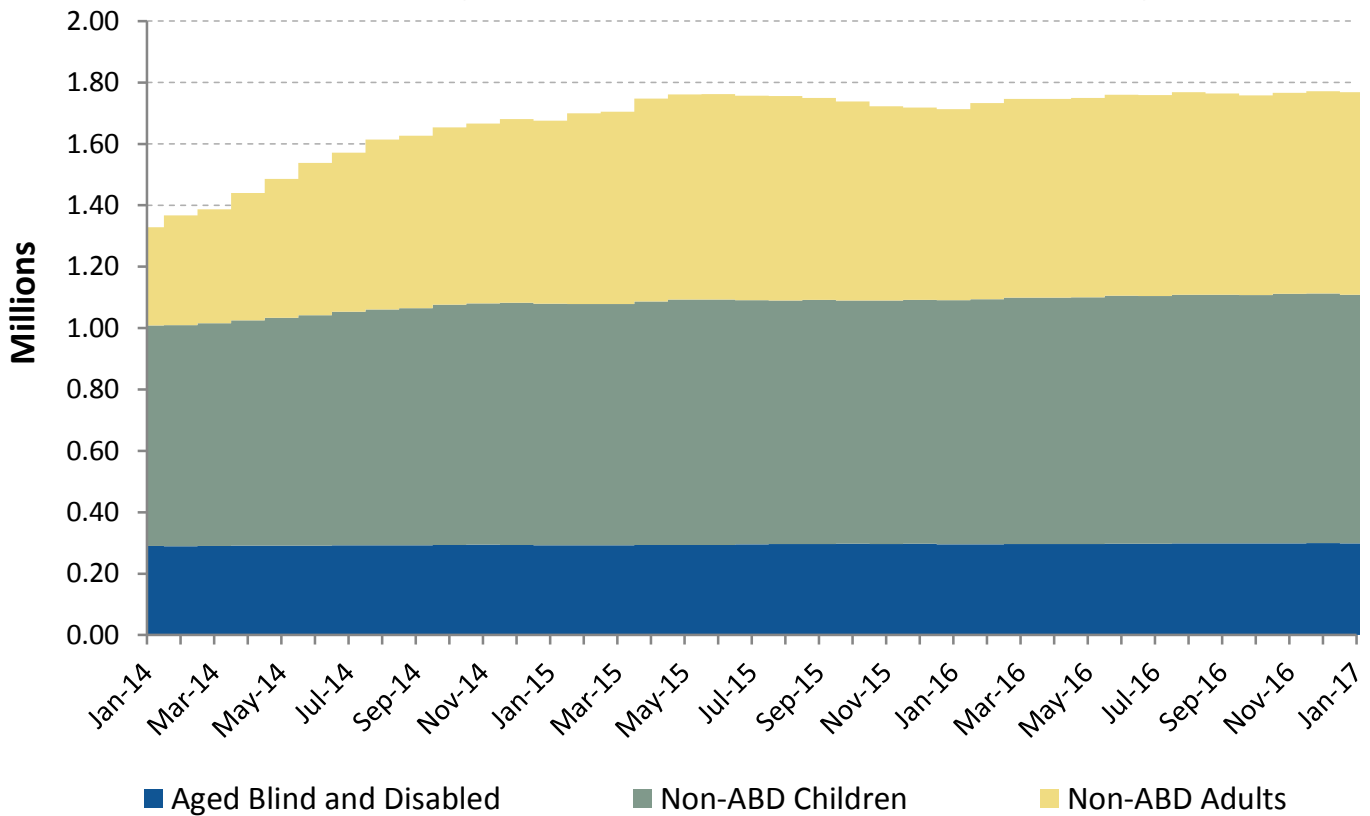


## NJ FamilyCare\* Enrollment Summary - January 2017

Eligibility Category	Age < 21	Age > 20	Total
Aged	0	92,432	92,432
Blind	56	741	797
Disabled	29,859	175,469	205,328
Non-ABD Children	809,620	0	809,620
Non-ABD Adults	16,413	644,306	660,719
<b>Total</b>	<b>855,948</b>	<b>912,948</b>	<b>1,768,896</b>

### NJ FamilyCare\* Enrollment Summary



\* - **NJ FamilyCare** includes all individuals receiving public medical assistance through the Division of Medical Assistance and Health Services and includes those eligible for federal reimbursement through the Medicaid program and Children's Health Insurance Program established in the federal Social Security Act and those eligible for other public medical assistance programs established through various state laws.

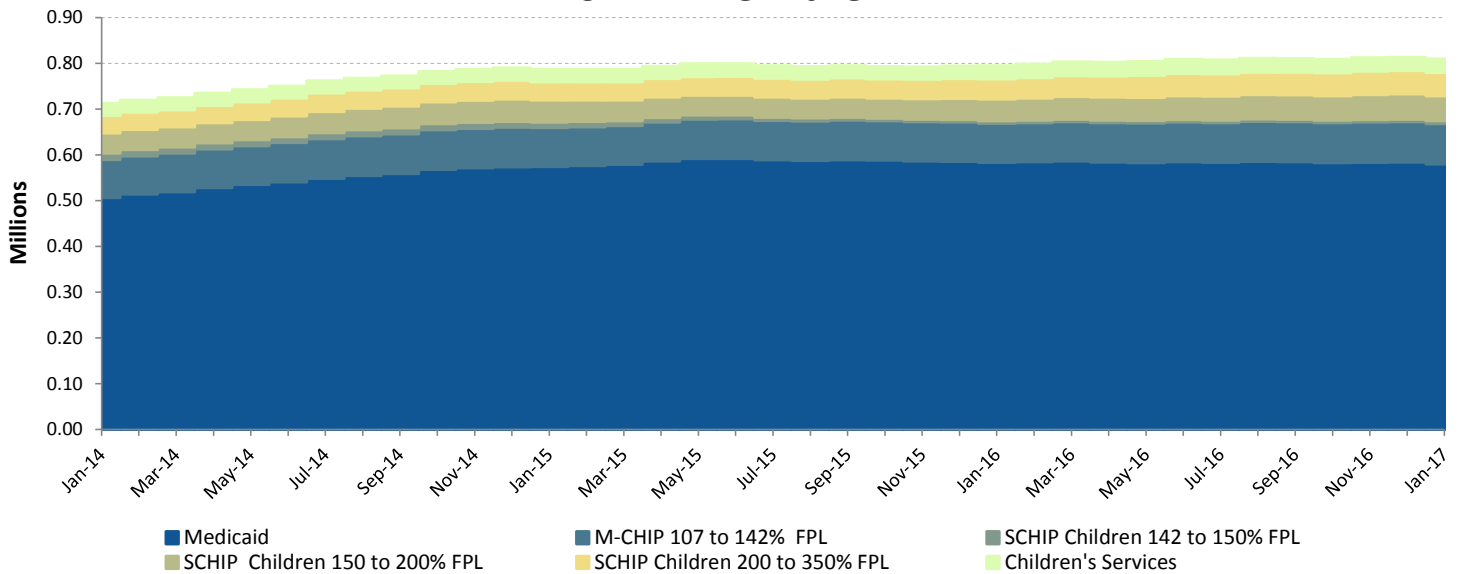
# NJ FamilyCare Enrollment Report

## Non-ABD Children - January 2017

County	Medicaid	M-CHIP 107 to 142% FPL	SCHIP Children 142 to 150% FPL	SCHIP Children 150 to 200% FPL	SCHIP Children 200 to 350% FPL	Children's Services	Total
Atlantic	24,885	2,641	163	1,904	1,387	1,529	32,509
Bergen	29,446	6,231	483	5,092	5,368	1,214	47,834
Burlington	18,364	2,618	186	2,022	1,997	2,237	27,424
Camden	46,710	5,553	268	3,102	2,785	2,343	60,761
Cape May	5,688	859	49	596	487	427	8,106
Cumberland	17,269	2,322	177	1,467	1,103	1,190	23,528
Essex	82,111	9,937	367	4,319	3,612	3,234	103,580
Gloucester	15,045	1,967	107	1,329	1,454	1,533	21,435
Hudson	63,812	10,097	487	4,023	3,497	1,266	83,182
Hunterdon	2,323	412	35	343	388	474	3,975
Mercer	23,329	3,717	225	2,457	1,987	2,558	34,273
Middlesex	41,165	8,580	612	6,348	5,734	1,409	63,848
Monmouth	27,050	4,391	271	2,859	2,645	1,625	38,841
Morris	10,877	2,309	177	2,016	1,767	1,092	18,238
Ocean	52,480	6,888	419	5,158	6,244	1,739	72,928
Passaic	55,692	8,703	1,156	4,813	3,777	961	75,102
Salem	4,768	628	46	406	289	628	6,765
Somerset	9,851	2,052	116	1,422	1,480	840	15,761
Sussex	3,729	622	49	552	712	621	6,285
Union	40,284	6,738	414	4,362	3,639	1,280	56,717
Warren	5,052	707	47	465	559	399	7,229
Other	3	0	0	0	0	1,296	1,299
<b>Total</b>	<b>579,933</b>	<b>87,972</b>	<b>5,854</b>	<b>55,055</b>	<b>50,911</b>	<b>29,895</b>	<b>809,620</b>

*Includes children eligible through CHIPRA - 10,804*

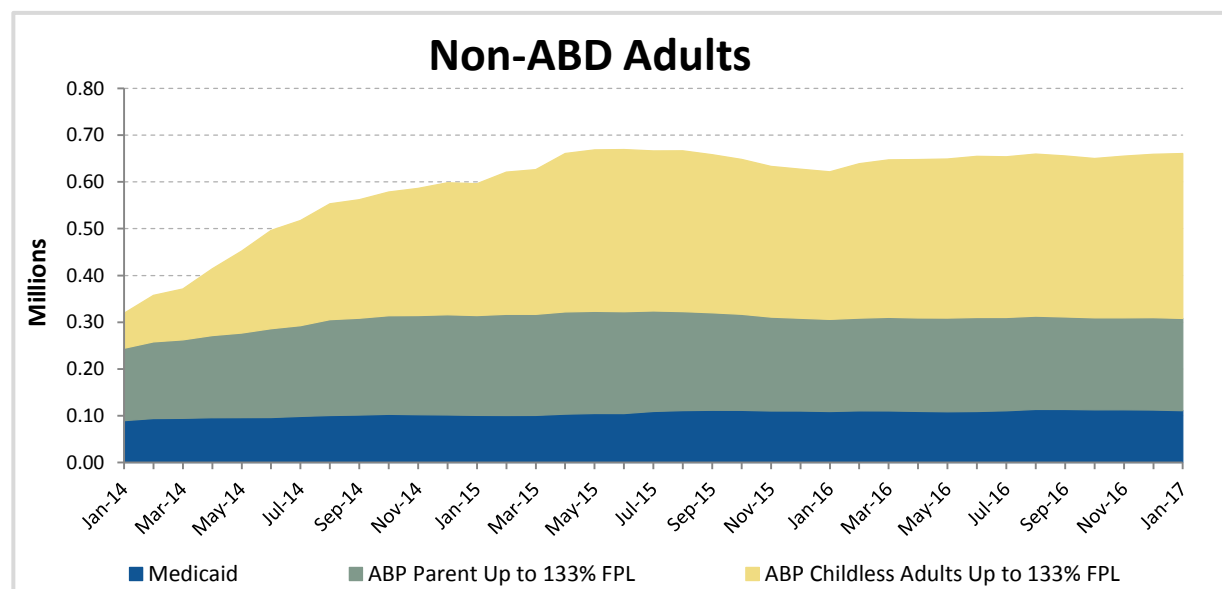
## Non-ABD Children



# NJ FamilyCare Enrollment Report

Non-ABD Adults - January 2017				
County	Medicaid *	ABP Parent Up to 133% FPL	ABP Childless Adults Up to 133% FPL	Total
Atlantic	5,212	8,361	16,047	29,620
Bergen	5,615	12,996	28,423	47,034
Burlington	4,813	6,382	13,955	25,150
Camden	11,187	14,580	30,819	56,586
Cape May	1,266	2,223	4,421	7,910
Cumberland	3,324	4,557	8,119	16,000
Essex	17,434	24,892	45,395	87,721
Gloucester	3,821	5,763	11,098	20,682
Hudson	10,506	23,244	34,402	68,152
Hunterdon	461	858	2,591	3,910
Mercer	4,395	6,624	12,929	23,948
Middlesex	6,841	14,954	27,753	49,548
Monmouth	4,974	8,177	19,074	32,225
Morris	2,317	3,963	10,543	16,823
Ocean	7,192	19,065	19,365	45,622
Passaic	9,766	19,491	28,430	57,687
Salem	1,173	1,424	2,681	5,278
Somerset	1,636	3,230	6,903	11,769
Sussex	1,007	1,696	4,090	6,793
Union	6,723	12,916	21,907	41,546
Warren	1,179	1,891	3,642	6,712
Other	2	0	1	3
<b>Total</b>	<b>110,844</b>	<b>197,287</b>	<b>352,588</b>	<b>660,719</b>

\* Includes pregnant women eligible through CHIPRA - 1,603



# NJ FamilyCare Enrollment Report

<b>ABD Eligibles - January 2017</b>				
<b>County</b>	<b>Aged</b>	<b>Blind</b>	<b>Disabled</b>	<b>Total</b>
Atlantic	2,708	22	8,111	10,841
Bergen	11,212	47	10,878	22,137
Burlington	2,448	29	8,699	11,176
Camden	4,677	83	20,191	24,951
Cape May	957	6	2,642	3,605
Cumberland	1,533	23	7,597	9,153
Essex	9,496	138	30,868	40,502
Gloucester	1,395	17	6,416	7,828
Hudson	11,259	91	20,555	31,905
Hunterdon	489	5	1,518	2,012
Mercer	3,306	40	11,754	15,100
Middlesex	9,942	54	12,421	22,417
Monmouth	4,519	44	10,020	14,583
Morris	3,963	15	5,252	9,230
Ocean	3,848	29	10,158	14,035
Passaic	9,055	65	15,621	24,741
Salem	435	4	2,514	2,953
Somerset	2,978	15	3,741	6,734
Sussex	632	9	2,222	2,863
Union	6,663	55	11,838	18,556
Warren	747	6	2,071	2,824
Other	170	0	241	411
<b>Total</b>	<b>92,432</b>	<b>797</b>	<b>205,328</b>	<b>298,557</b>

*Includes 31,603 individuals in home and community-based waiver programs*

