



Jon S. Corzine
Governor

State of New Jersey
Office of the Attorney General
Department of Law and Public Safety
Juvenile Justice Commission
PO Box 107
Trenton, NJ 08625-0107
(609) 292-1400

Anne Milgram
Attorney General

Veleria N. Lawson
Executive Director

JUVENILE DETENTION ALTERNATIVE INITIATIVES (JDAI)
Monthly Data – MAY/JUNE 2008

The JDAI Monthly Data Report, current through June 2008, describes detention utilization across sites in terms of several key, consistently reported indicators. Information regarding detention alternatives and the five phase 2 sites (Bergen, Burlington, Mercer, Ocean, and Union counties) continues to be incorporated into the report as it becomes regularly available. Additionally, a new table appears in this report, and provides the overall youth population and an estimate of minority overrepresentation in detention, by county.

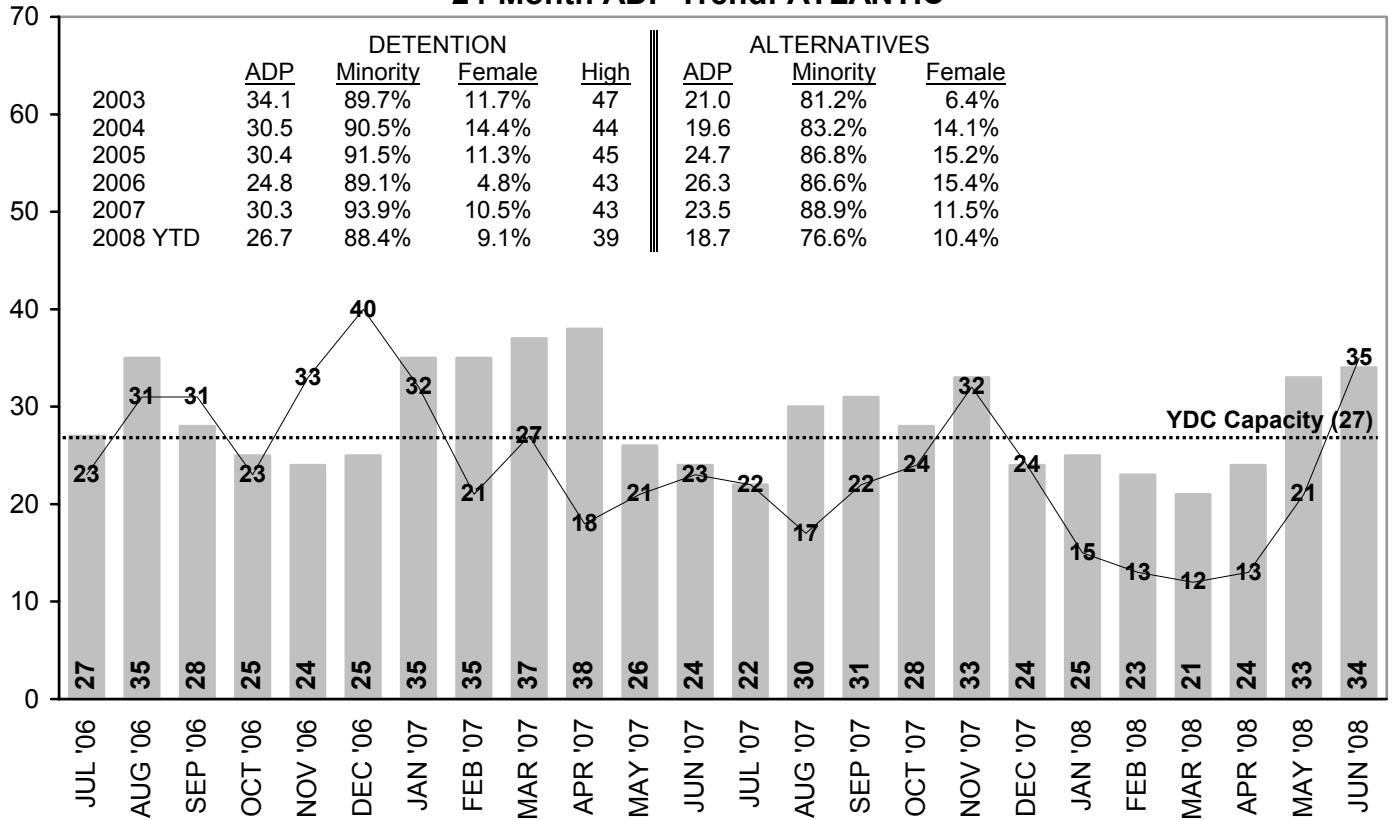


REALIZING POTENTIAL & CHANGING FUTURES
New Jersey is an Equal Opportunity Employer
Printed on Recycled Paper and Recyclable

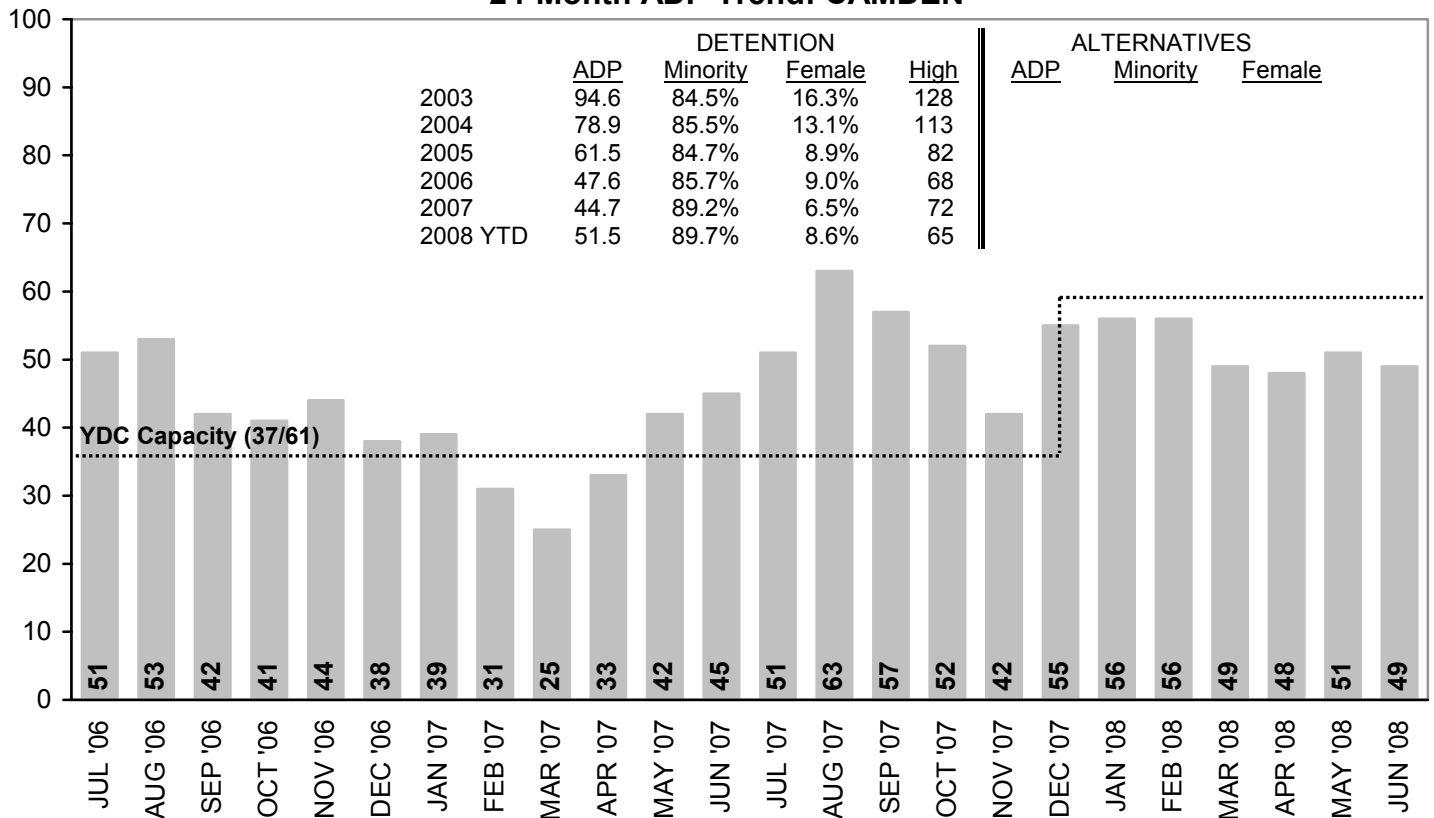


■ Detention — 35 — Alternatives

24-Month ADP Trend: ATLANTIC

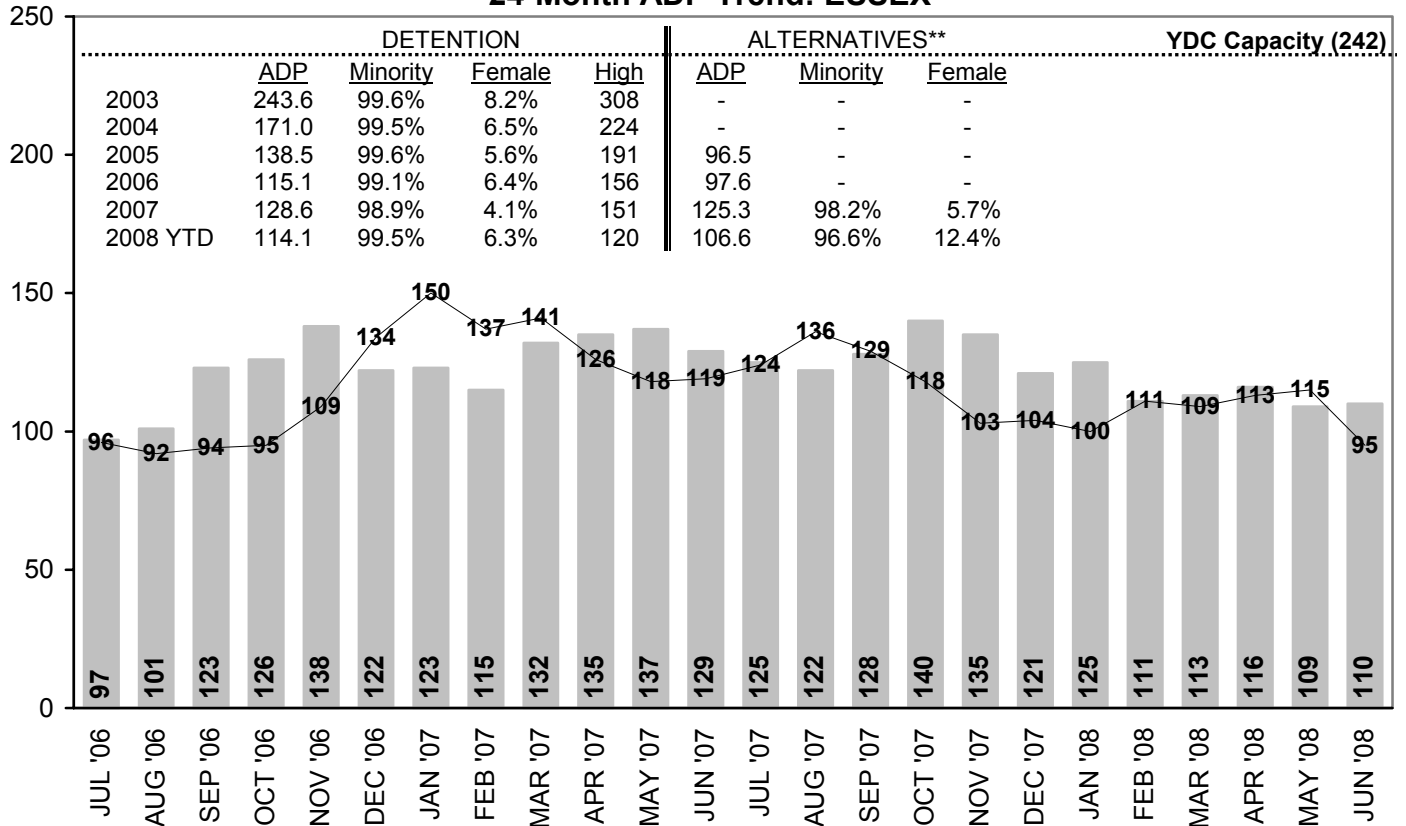


24-Month ADP Trend: CAMDEN*

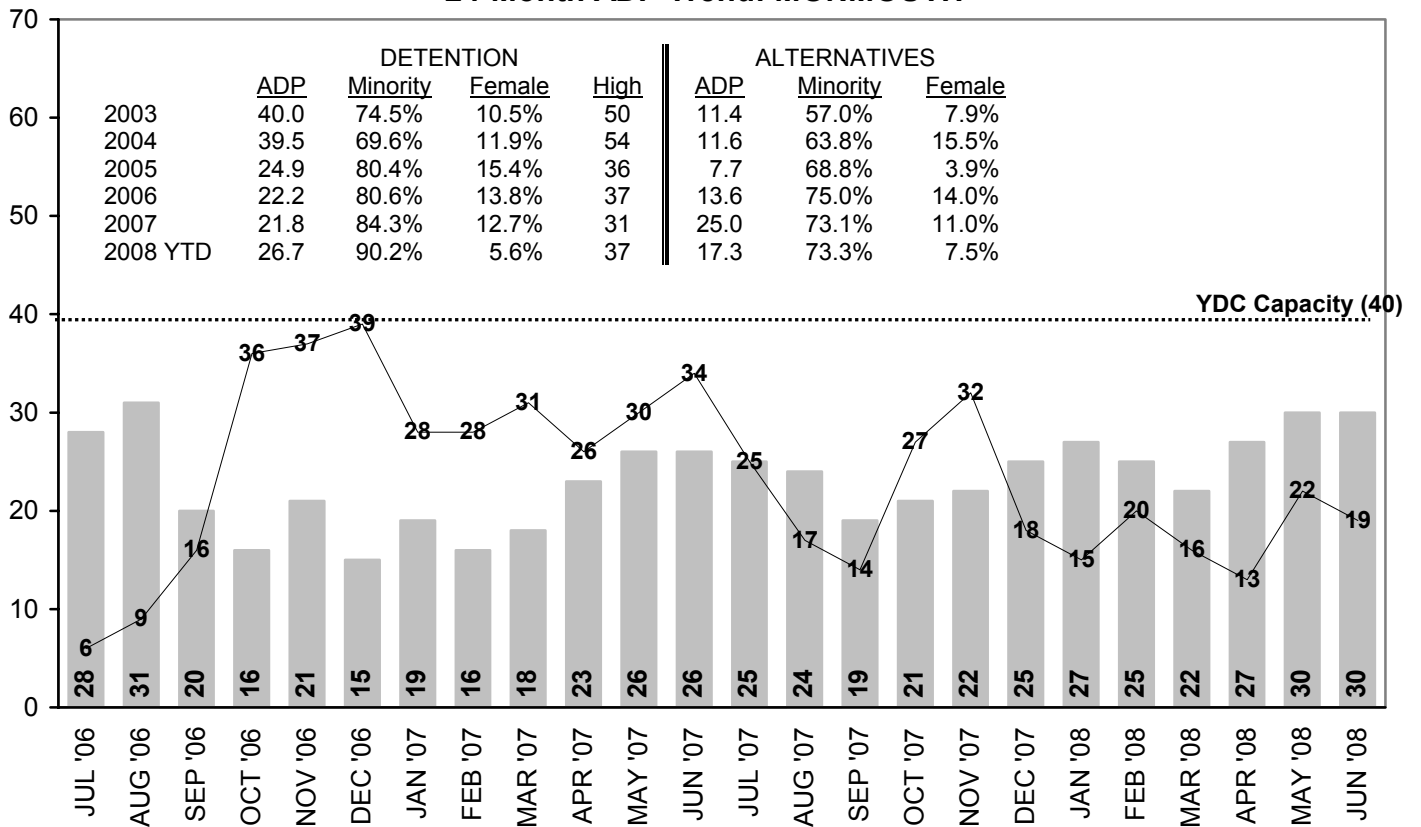


■ Detention — 35 — Alternatives

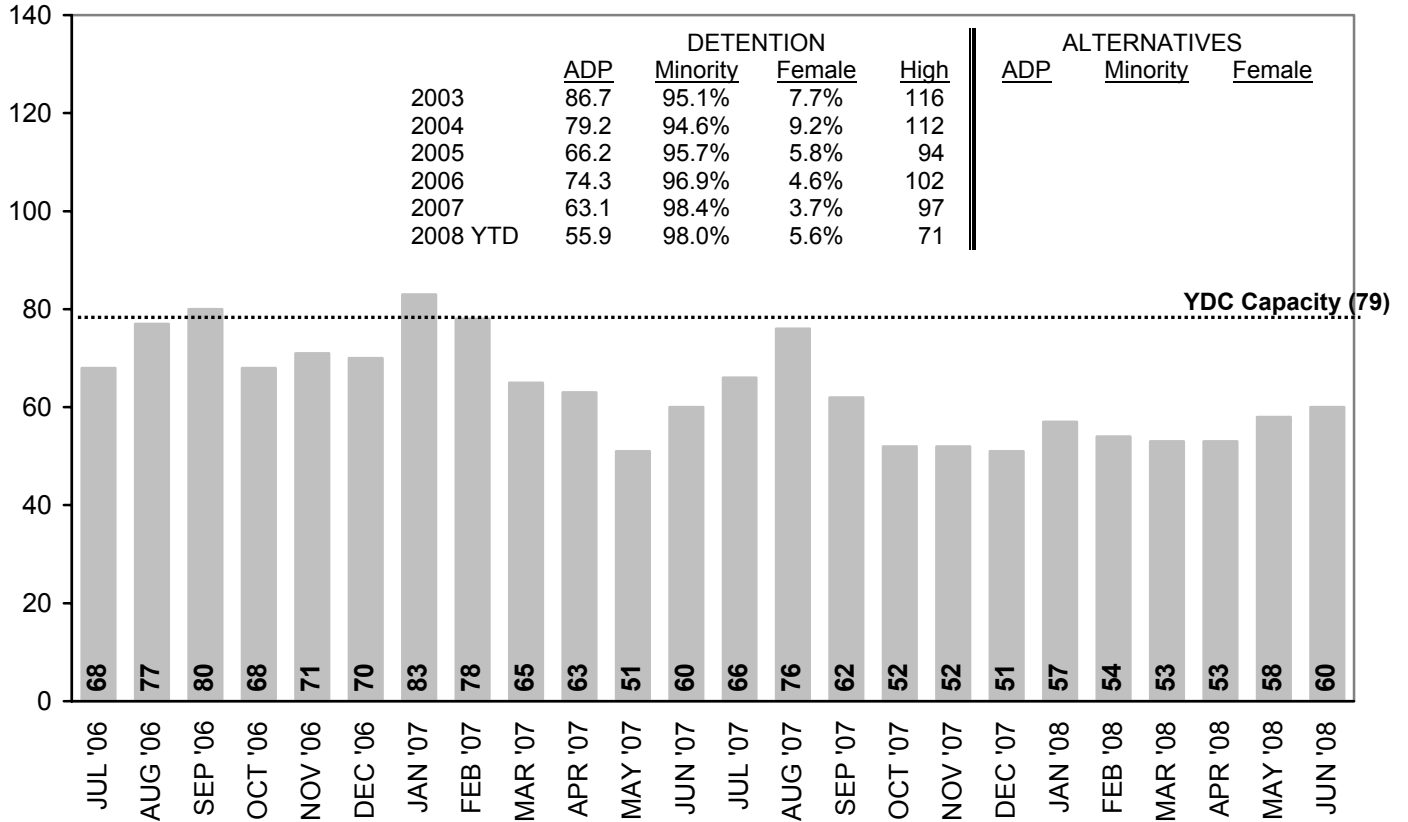
24-Month ADP Trend: ESSEX



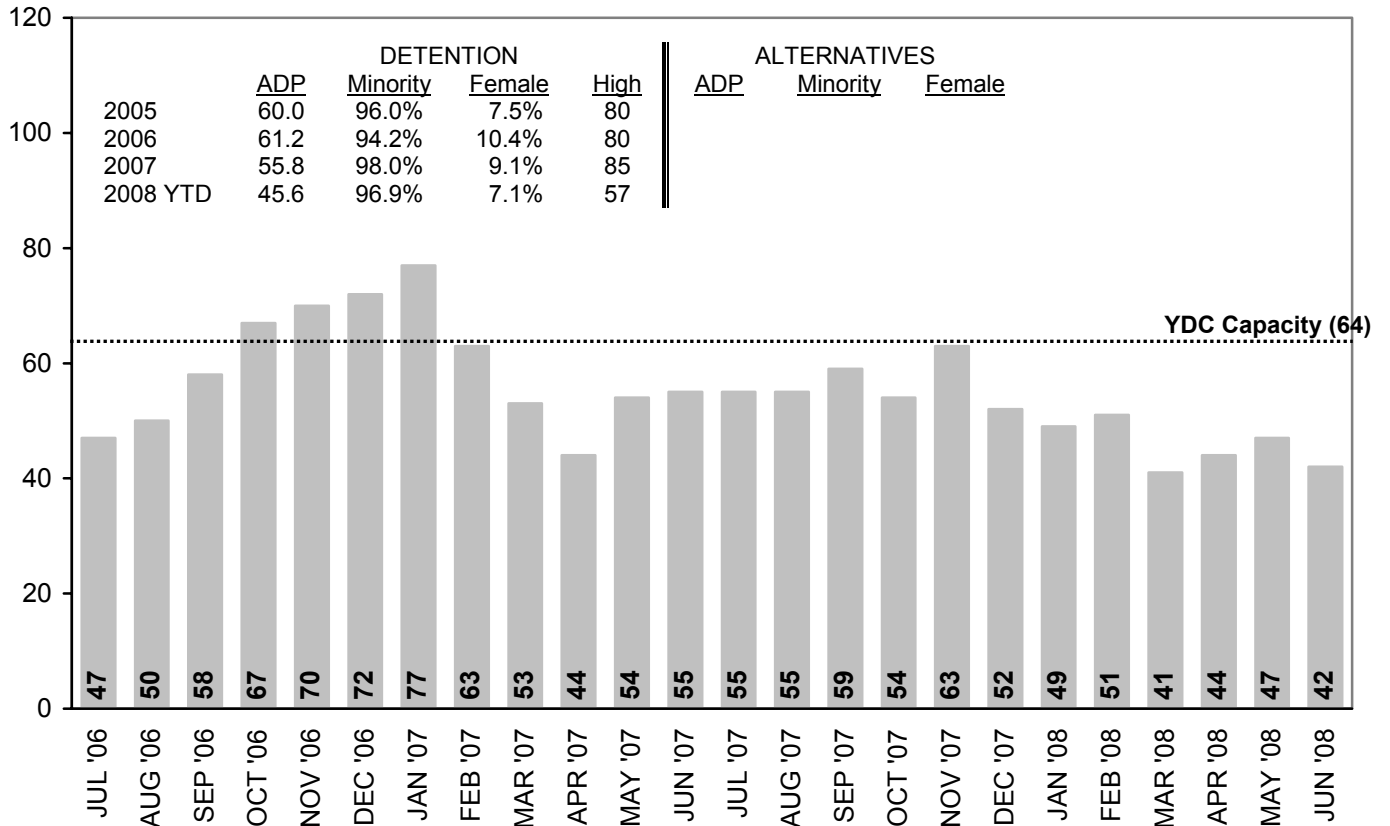
24-Month ADP Trend: MONMOUTH



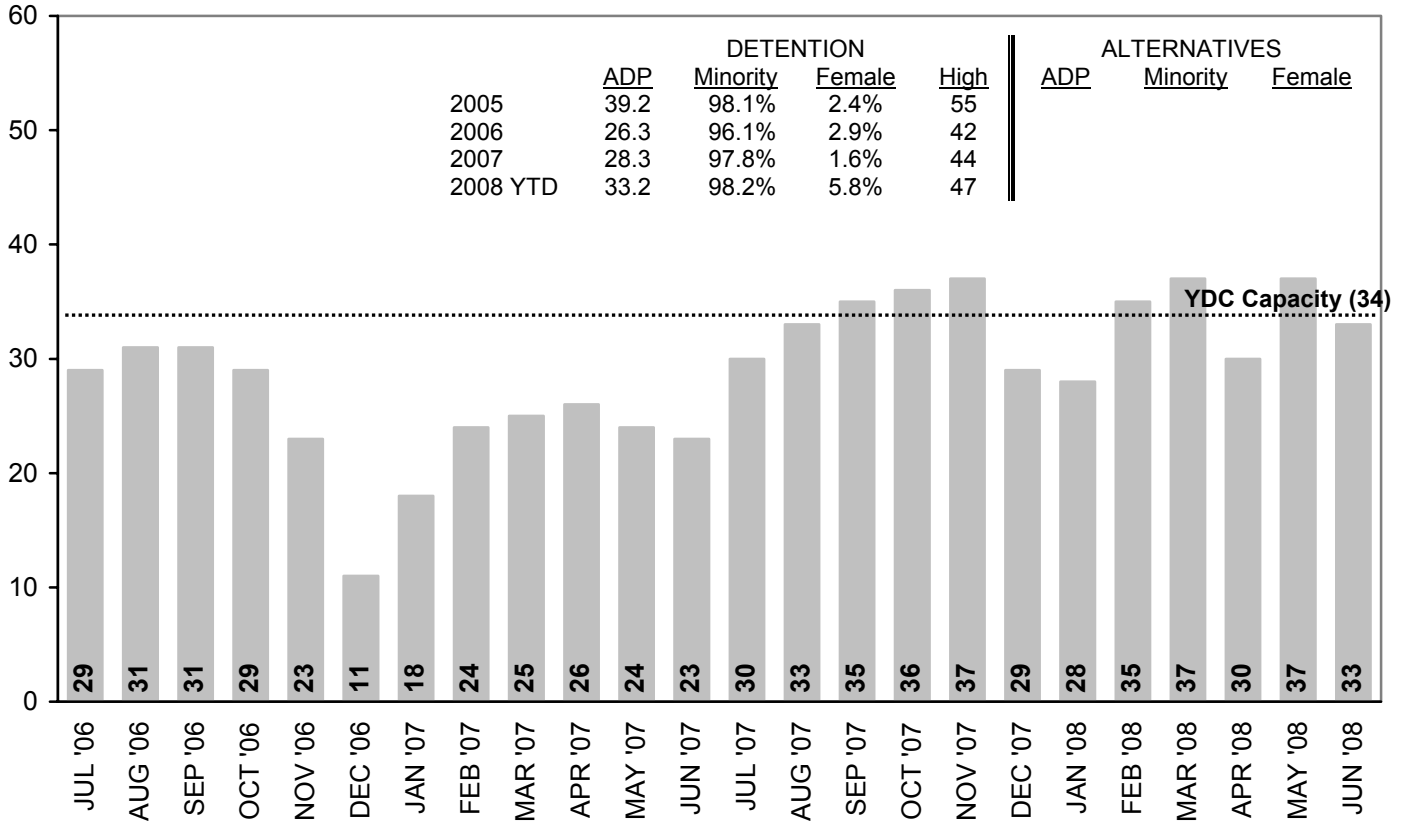
24-Month ADP Trend: HUDSON



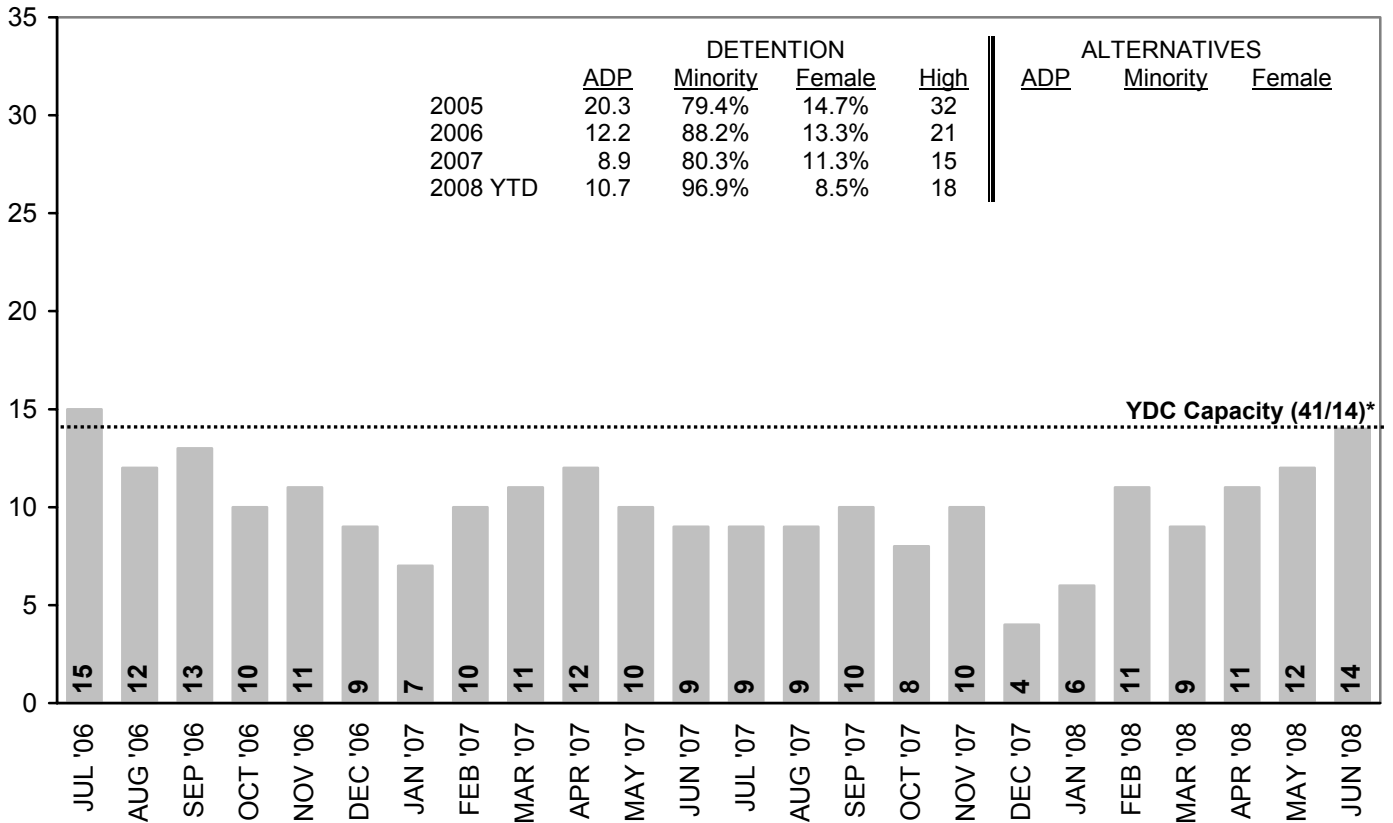
24-Month ADP Trend: MERCER



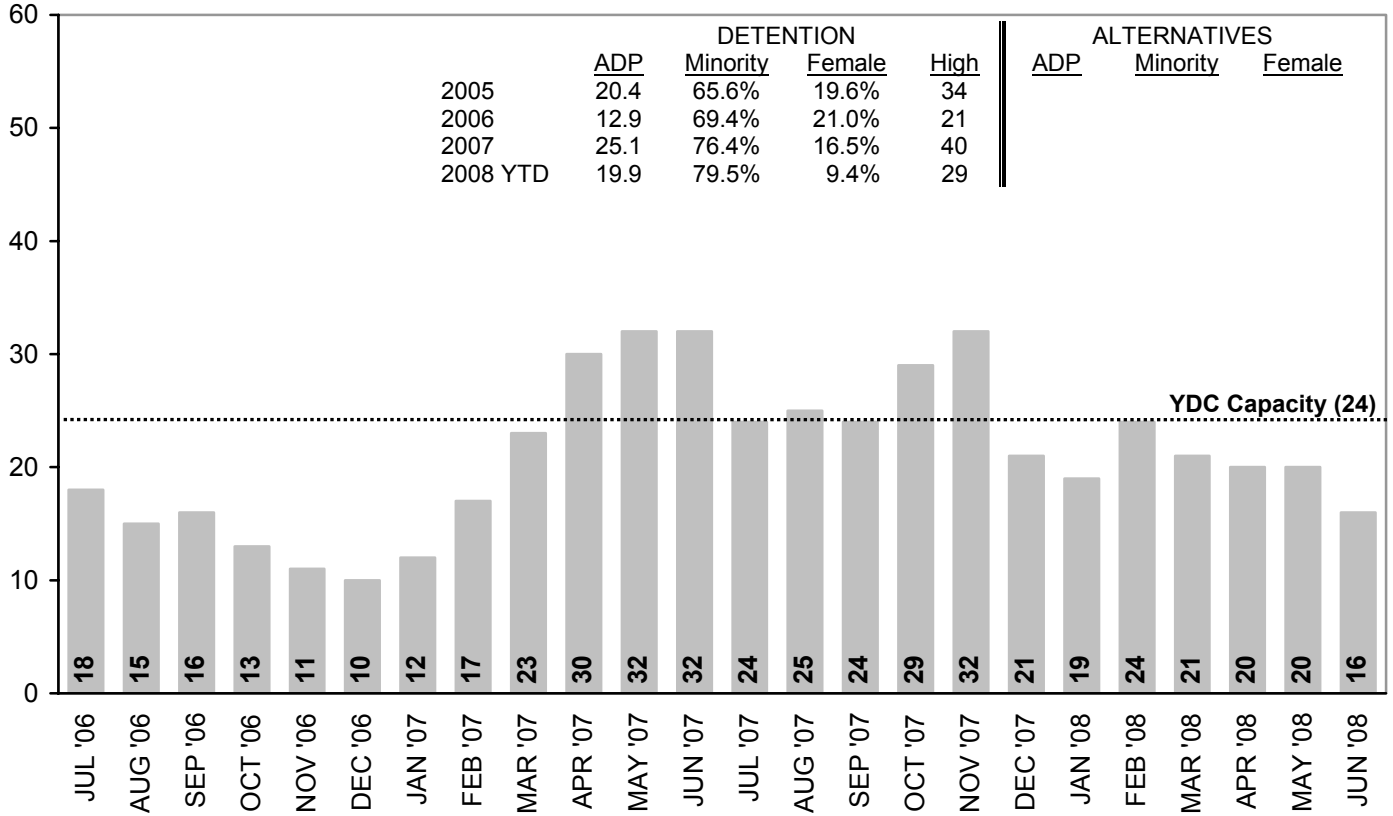
24-Month ADP Trend: UNION*



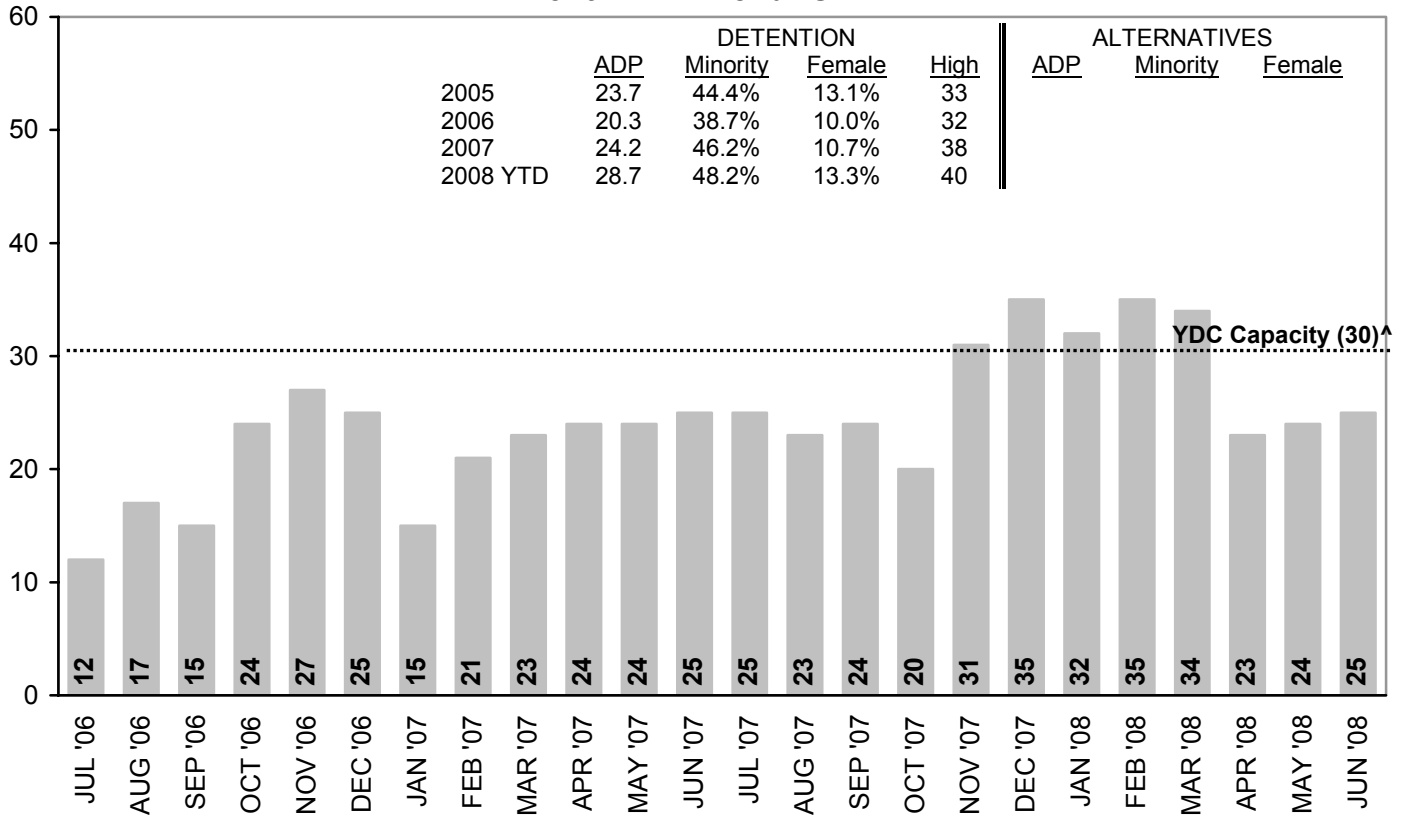
24-Month ADP Trend: BERGEN*



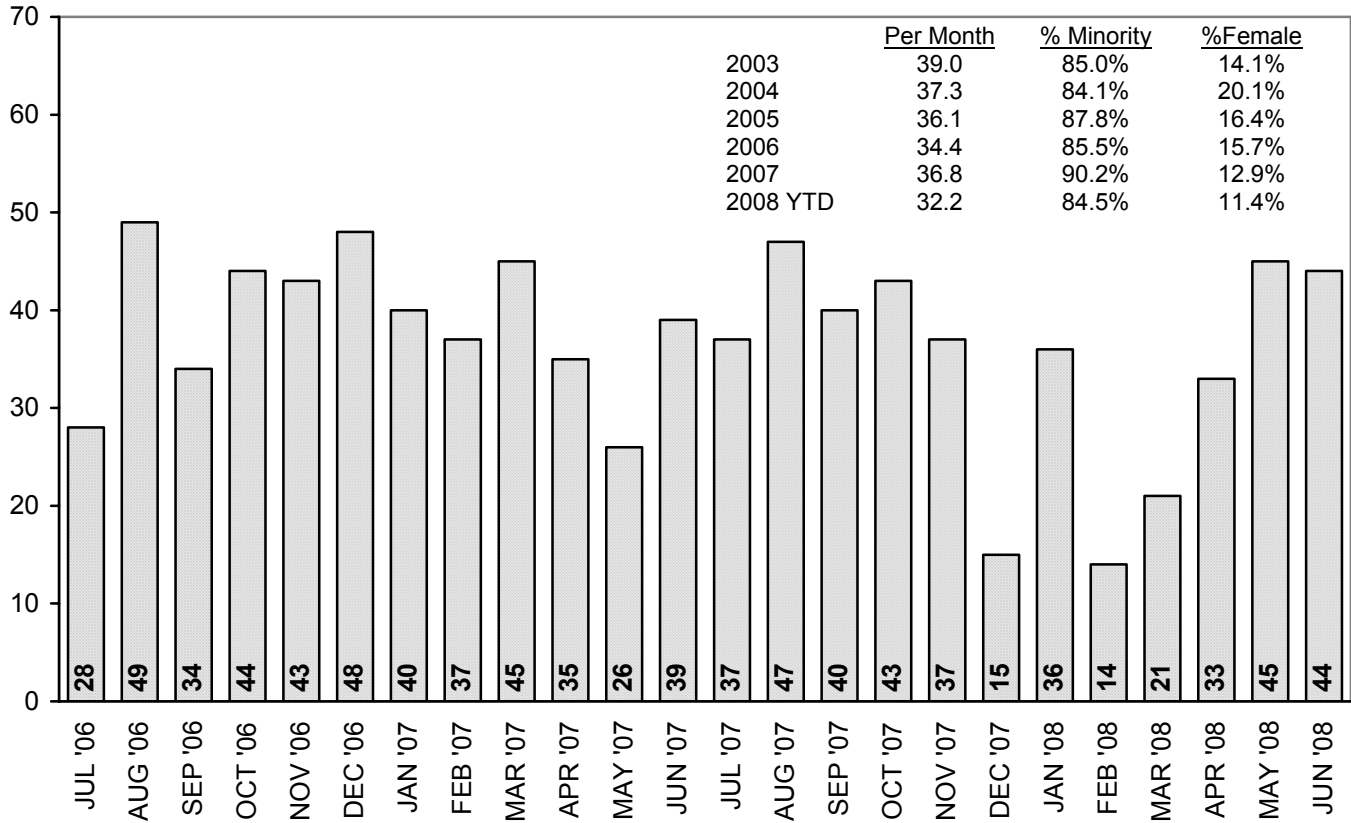
24-Month ADP Trend: BURLINGTON



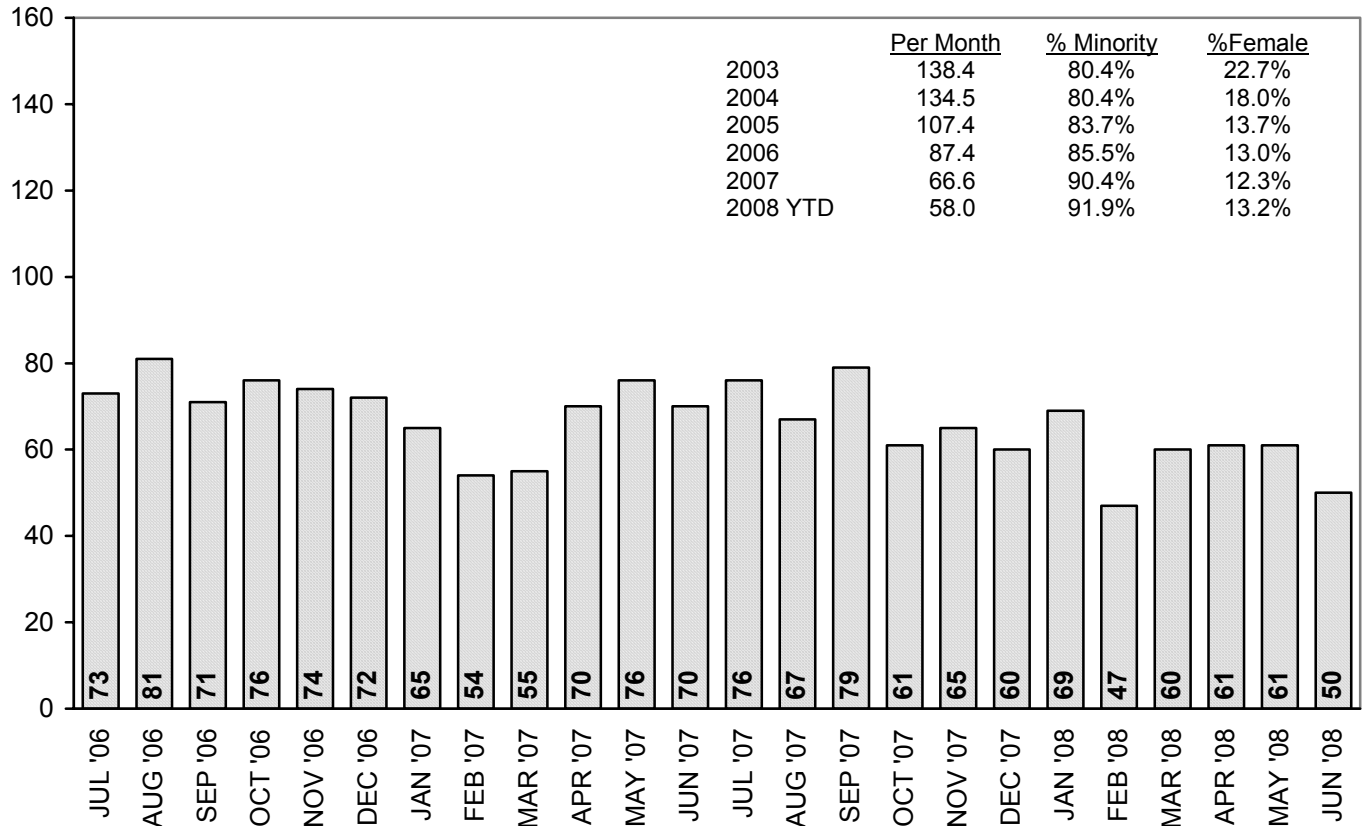
24-Month ADP Trend: OCEAN



24-Month Admissions Trend: ATLANTIC

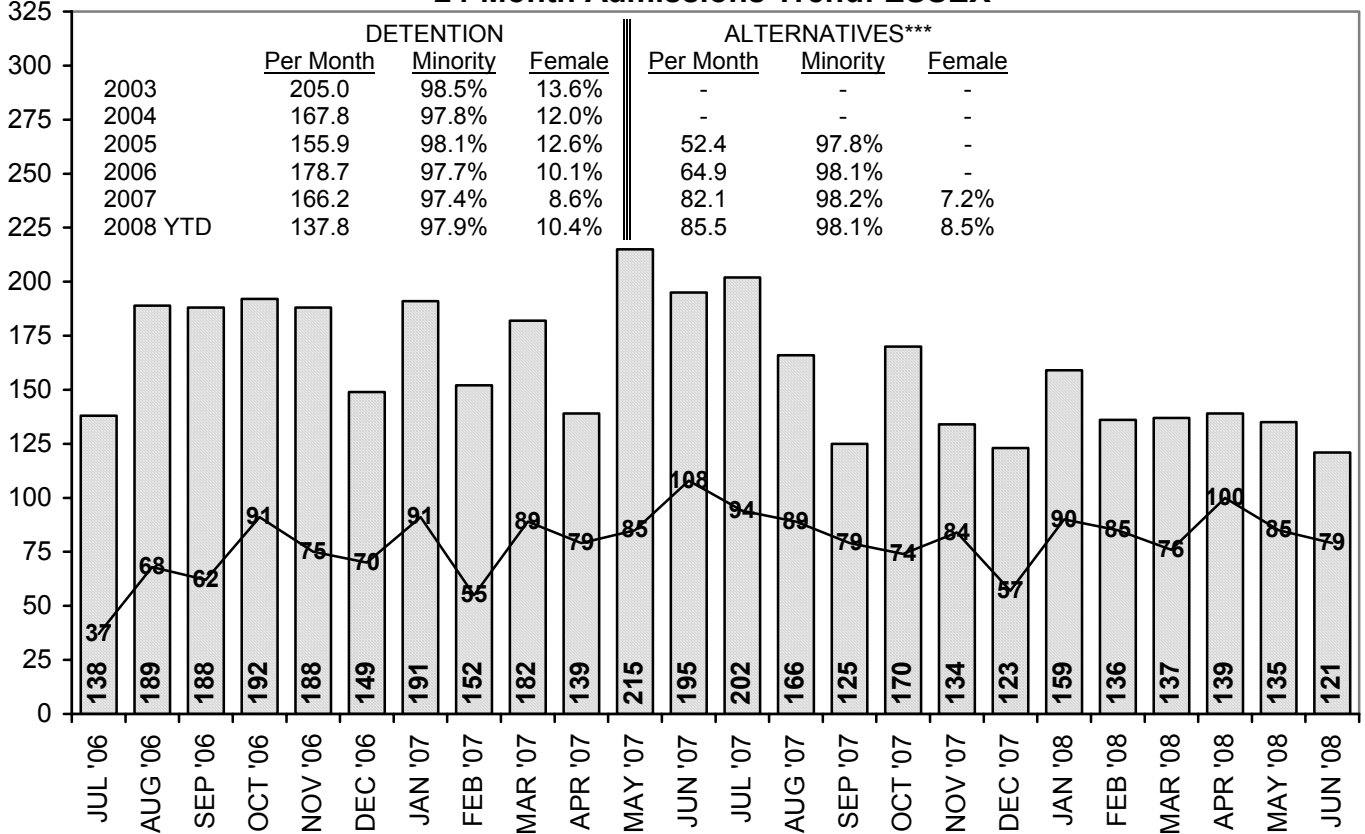


24-Month Admissions Trend: CAMDEN

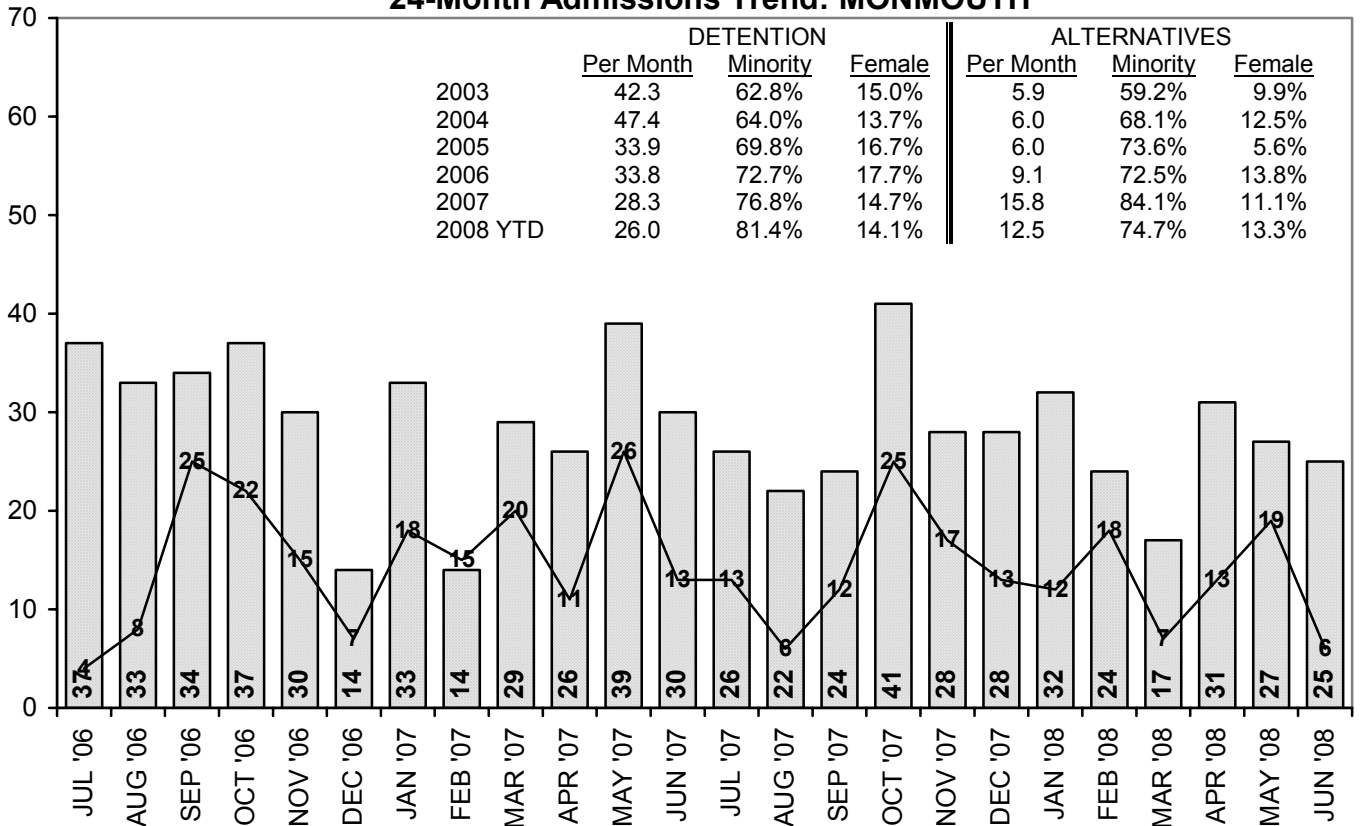


■ Detention — 35 — Alternatives

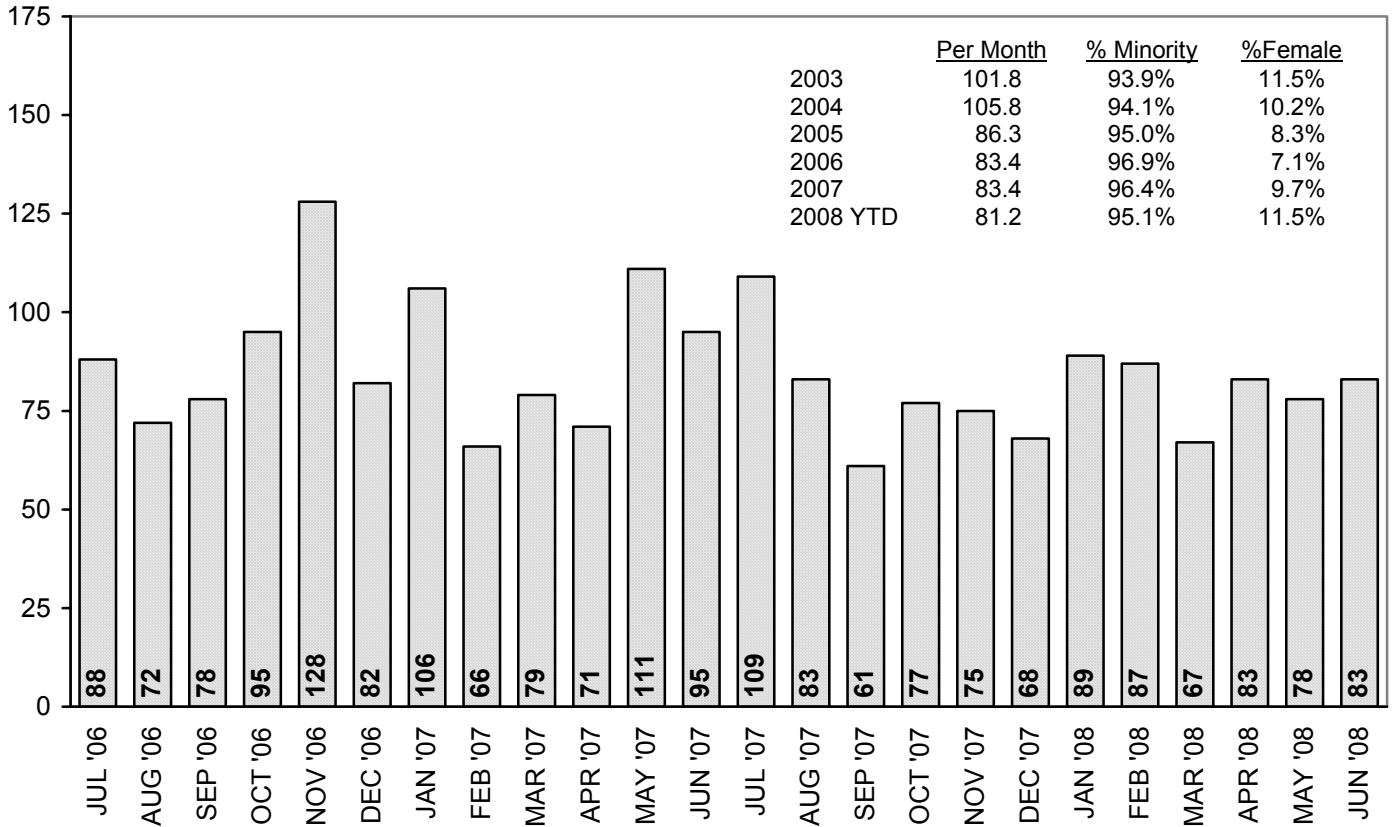
24-Month Admissions Trend: ESSEX



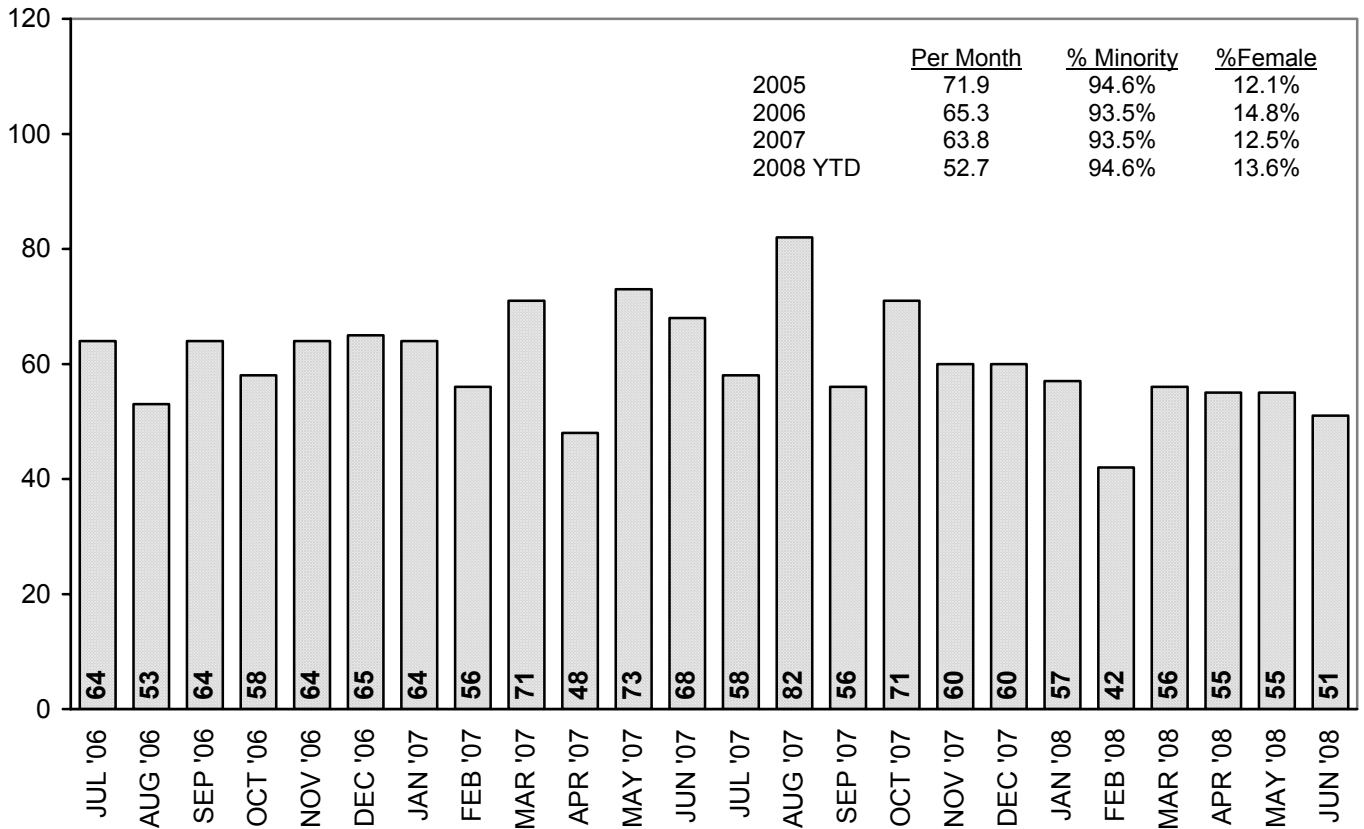
24-Month Admissions Trend: MONMOUTH



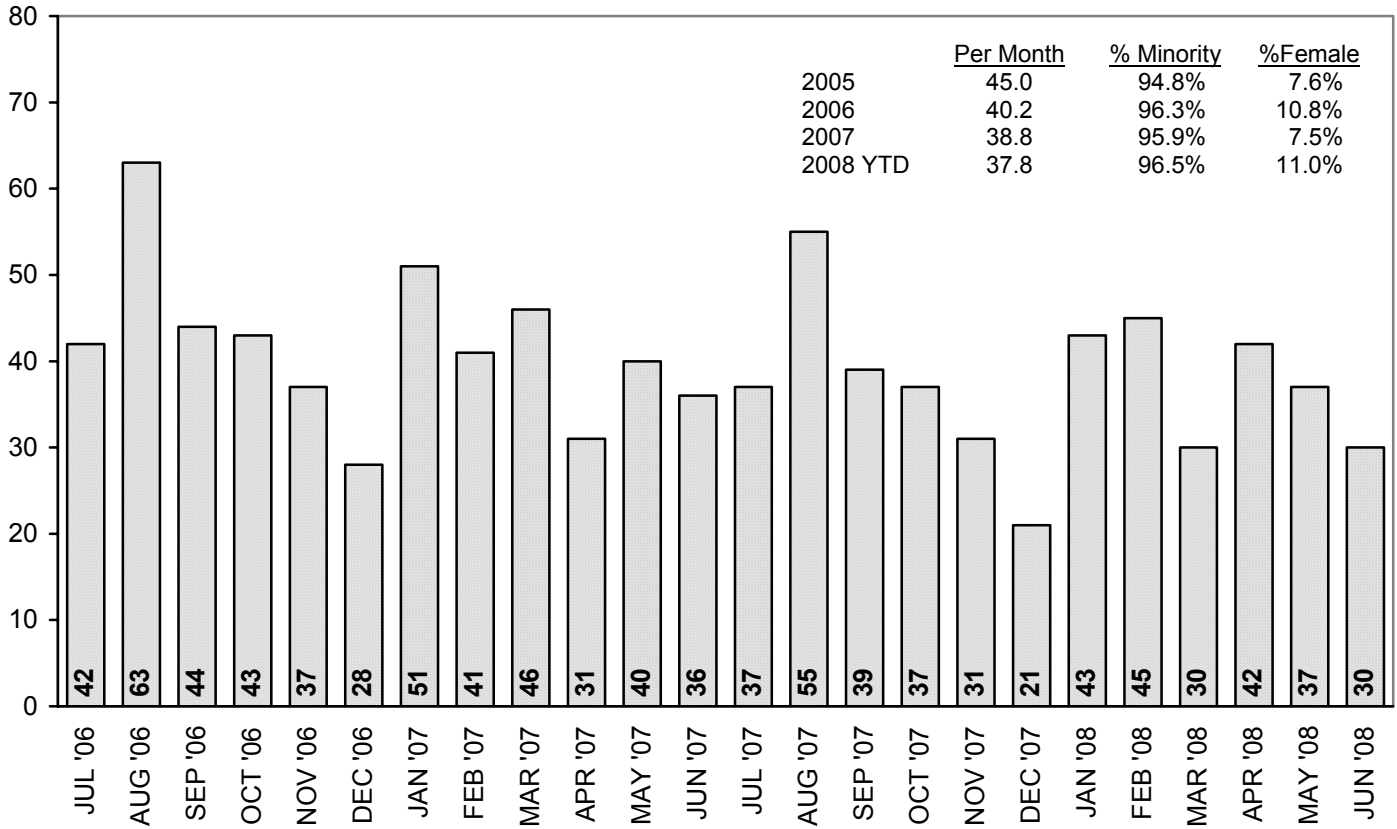
24-Month Admissions Trend: HUDSON



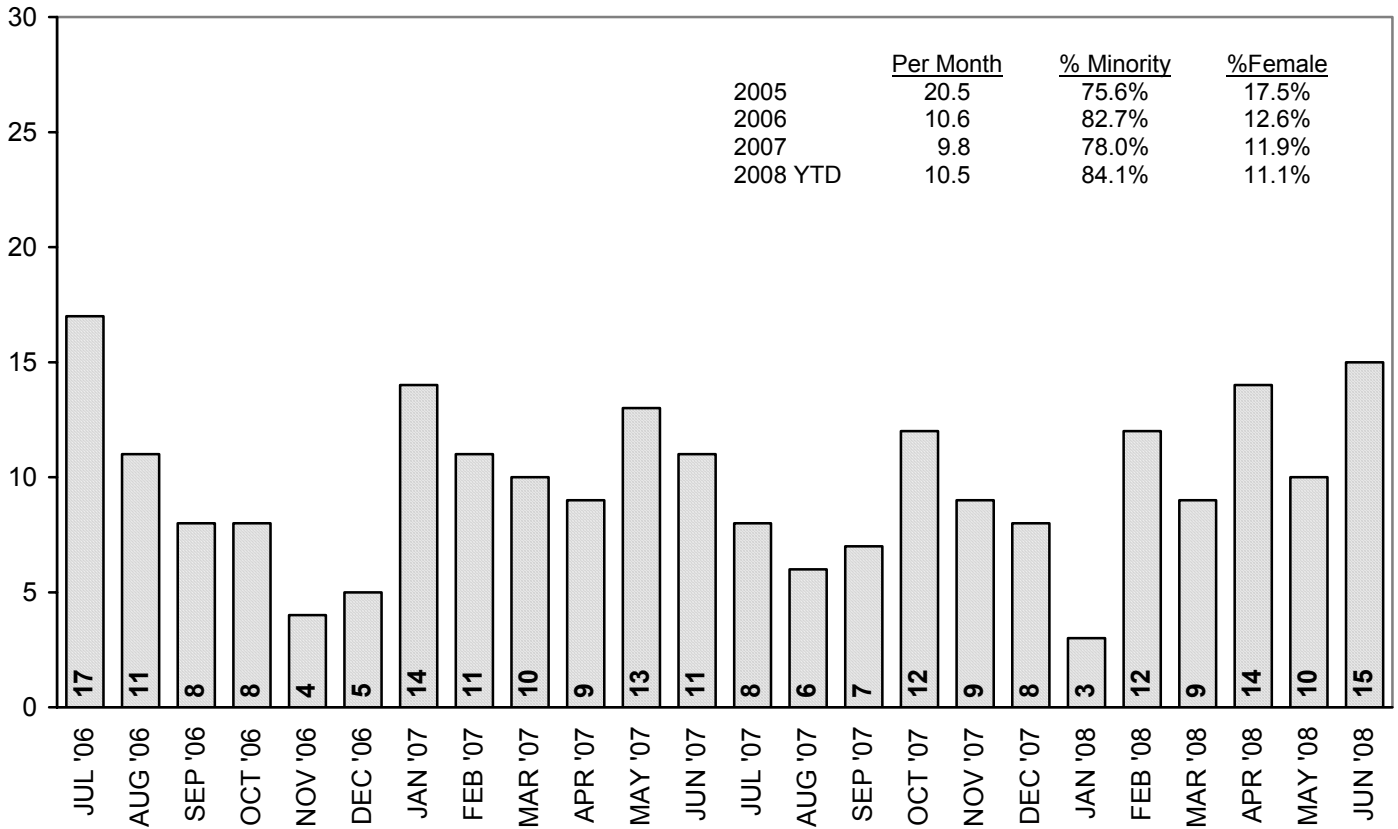
24-Month Admissions Trend: MERCER



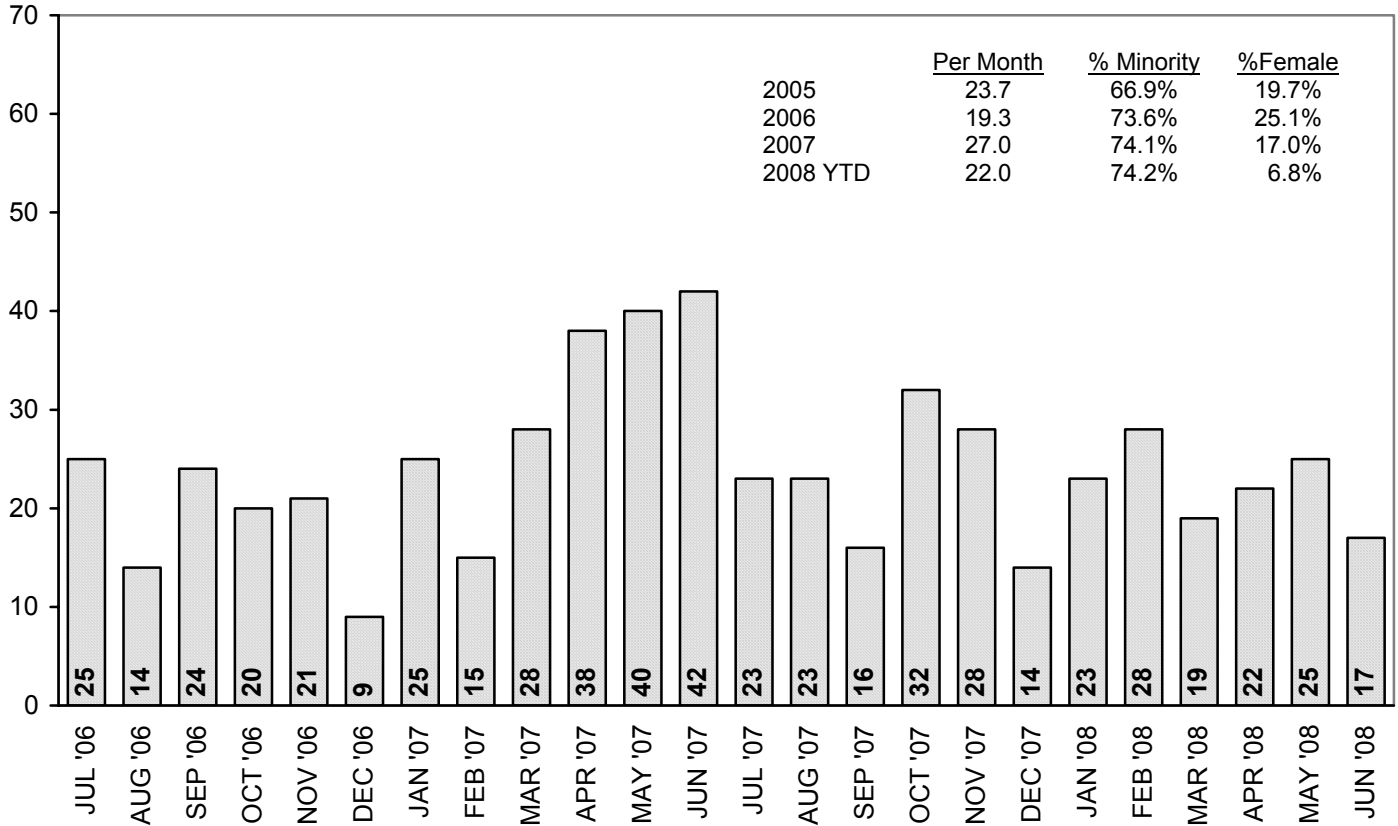
24-Month Admissions Trend: UNION



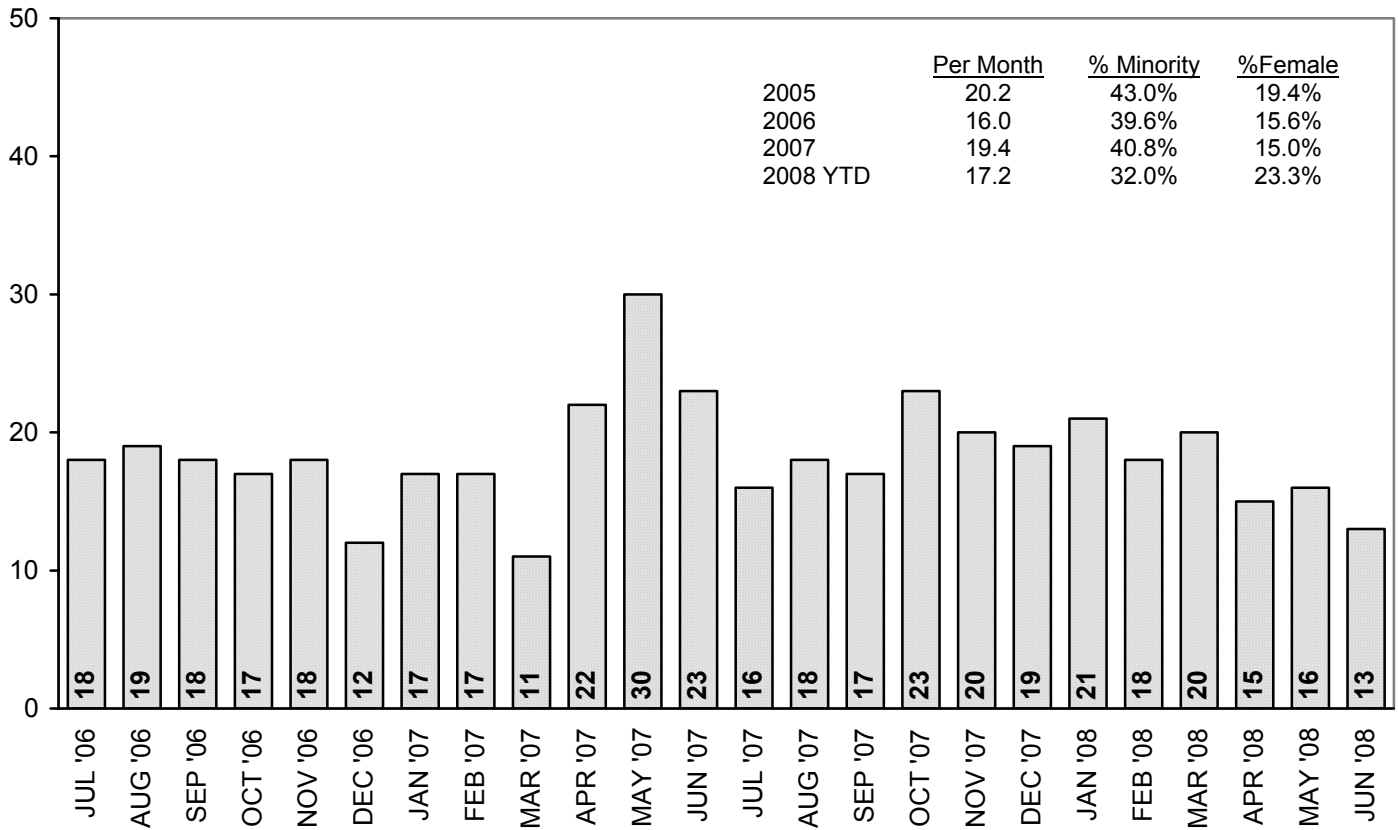
24-Month Admissions Trend: BERGEN



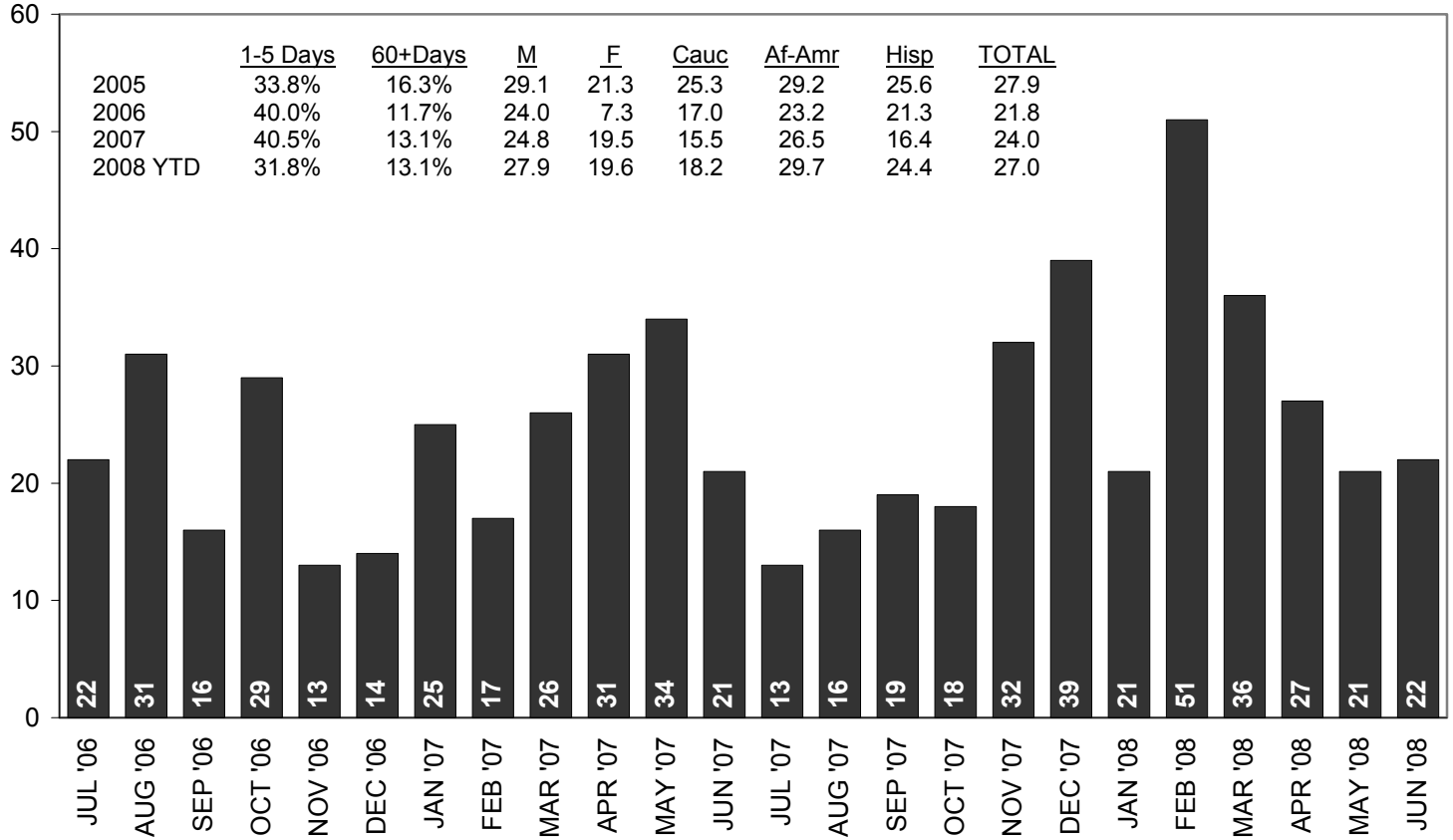
24-Month Admissions Trend: BURLINGTON



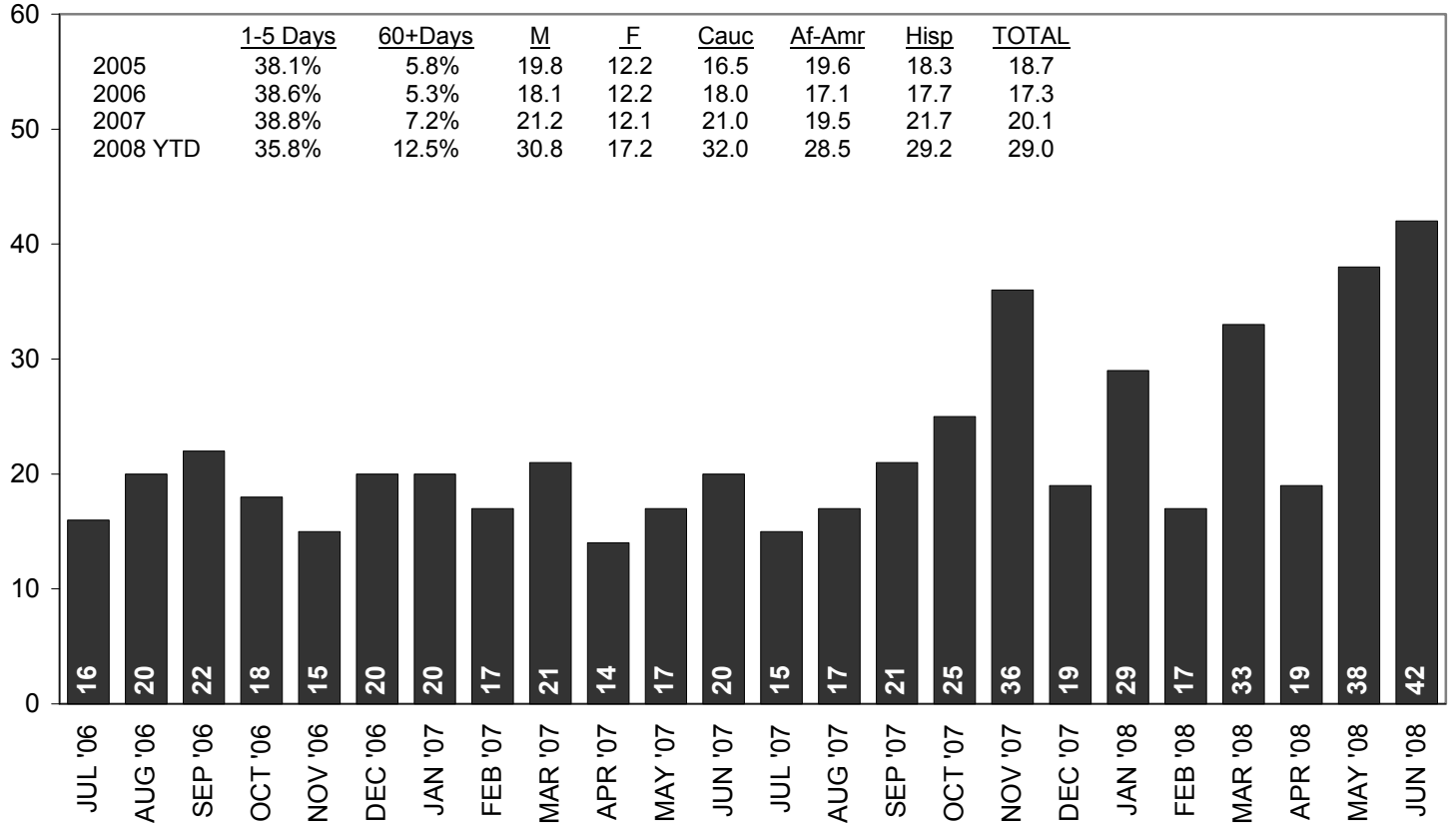
24-Month Admissions Trend: OCEAN



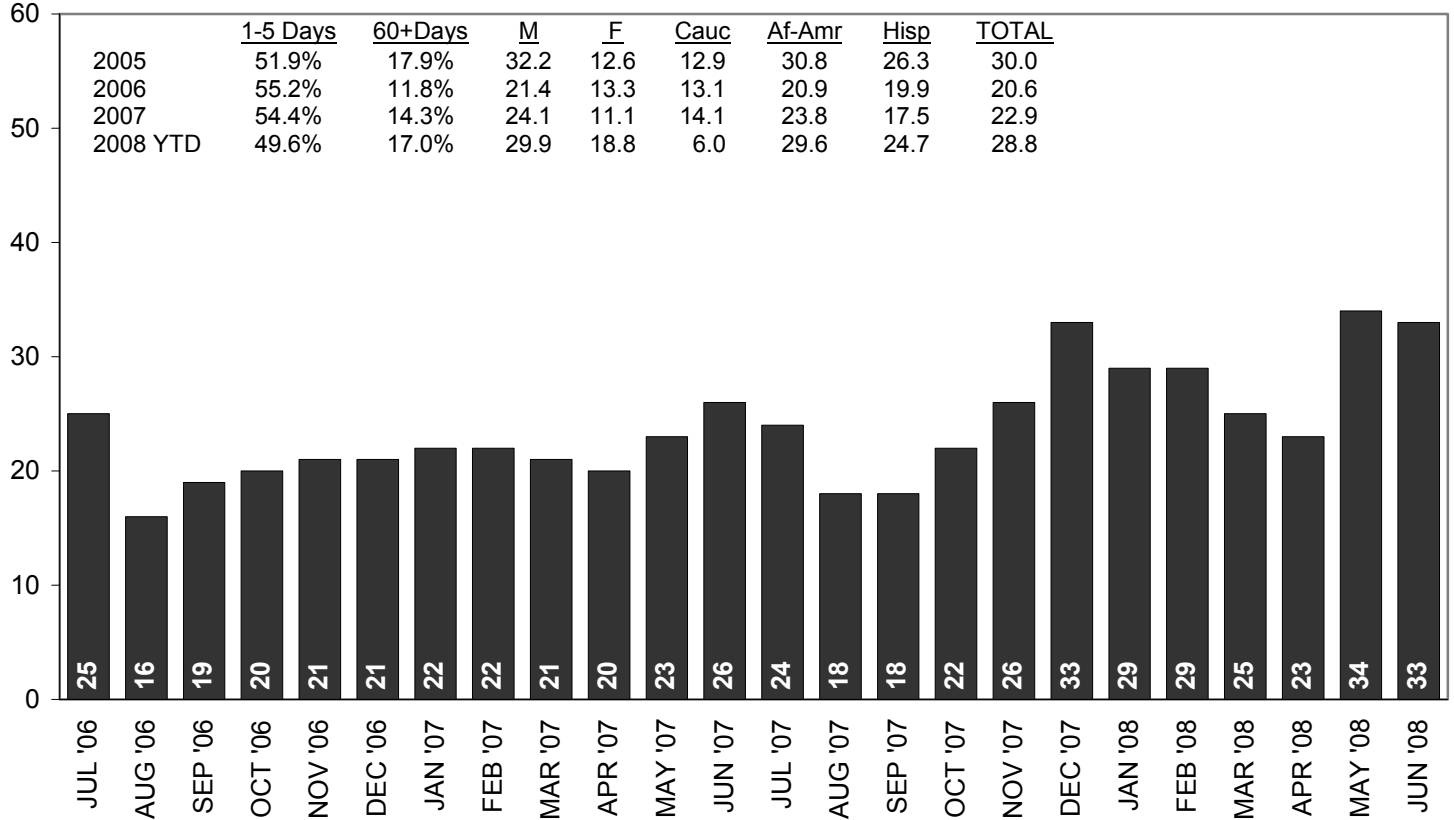
24-Month Average LOS Trend: ATLANTIC



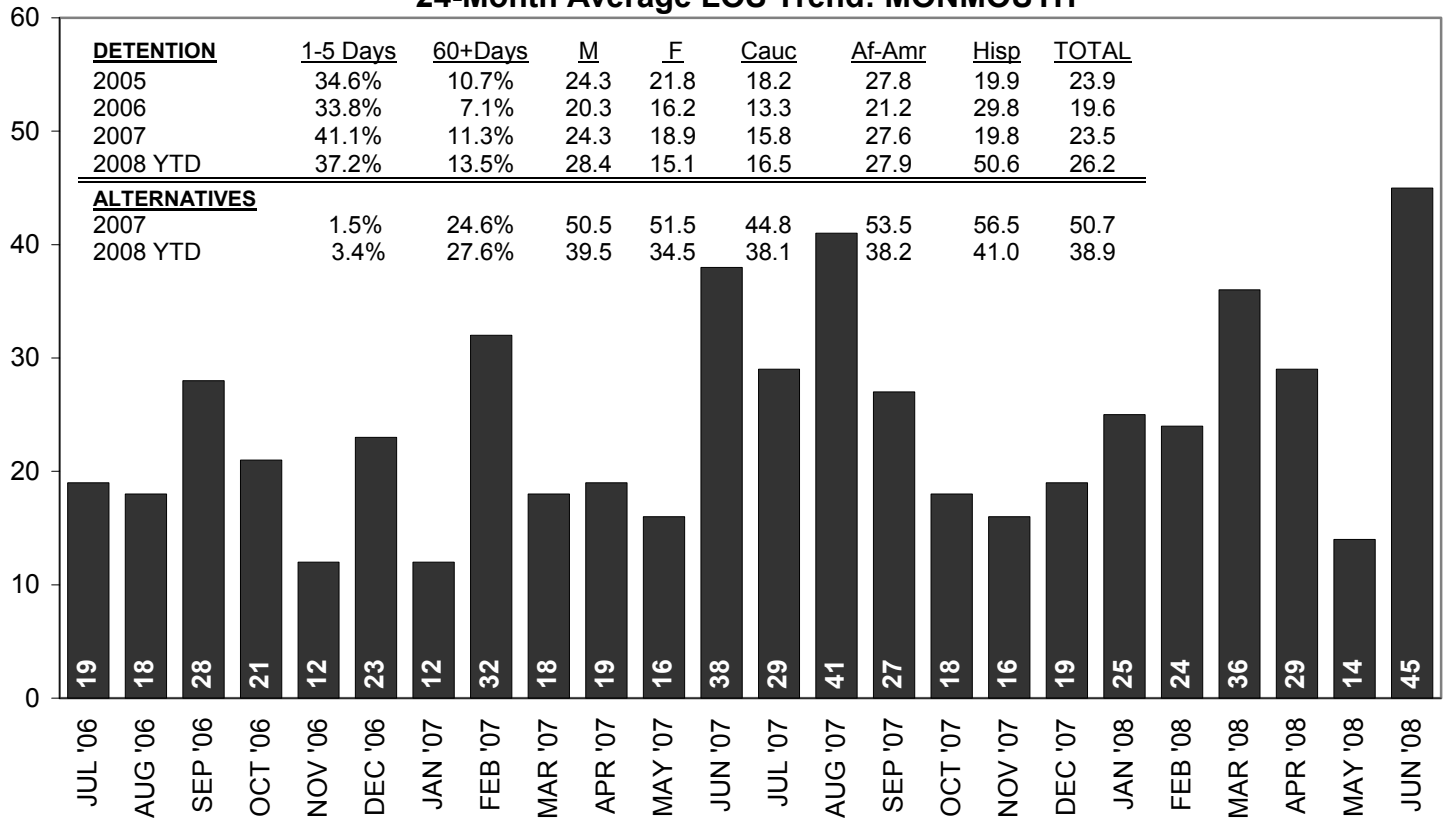
24-Month Average LOS Trend: CAMDEN



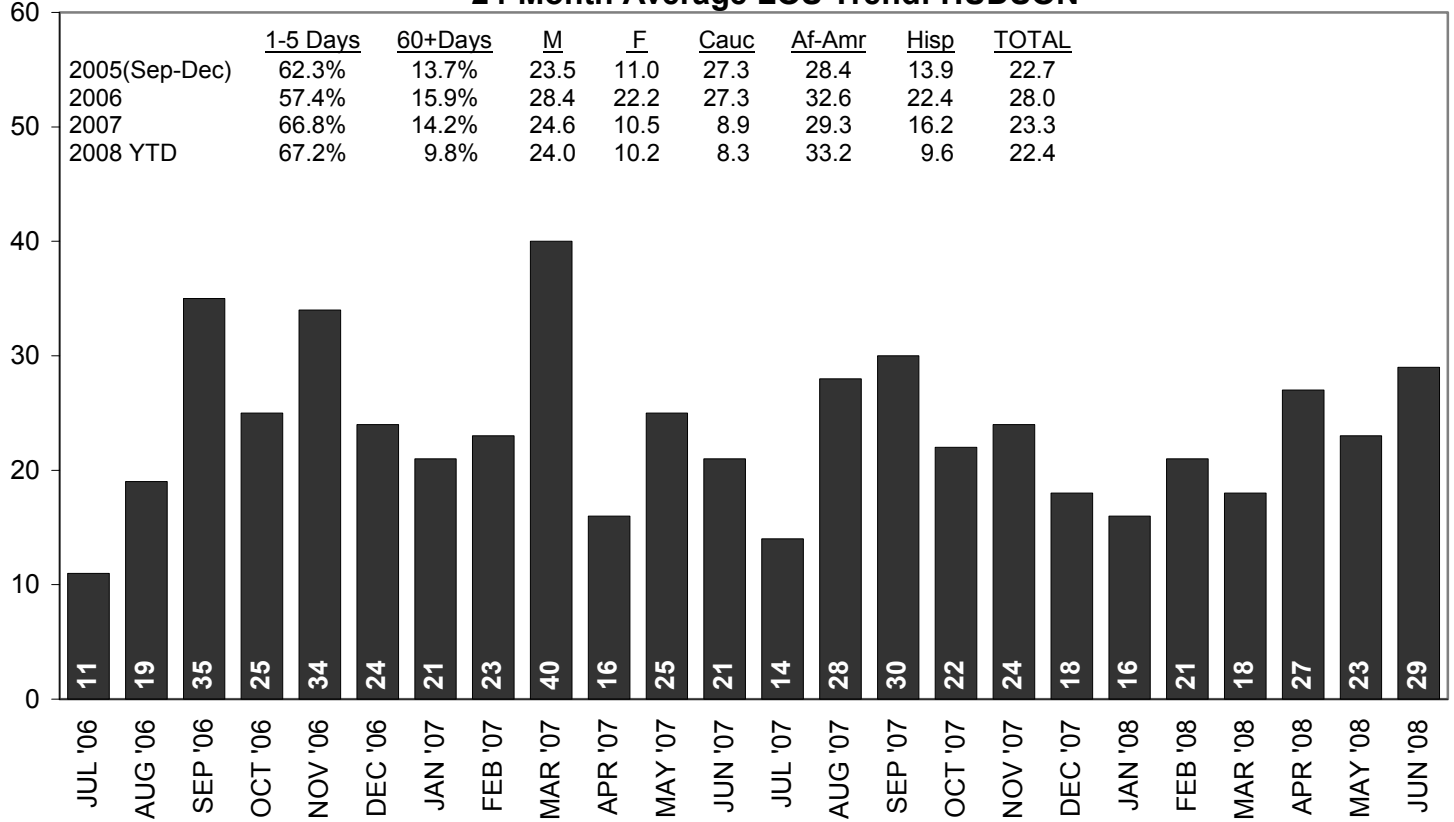
24-Month Average LOS Trend: ESSEX



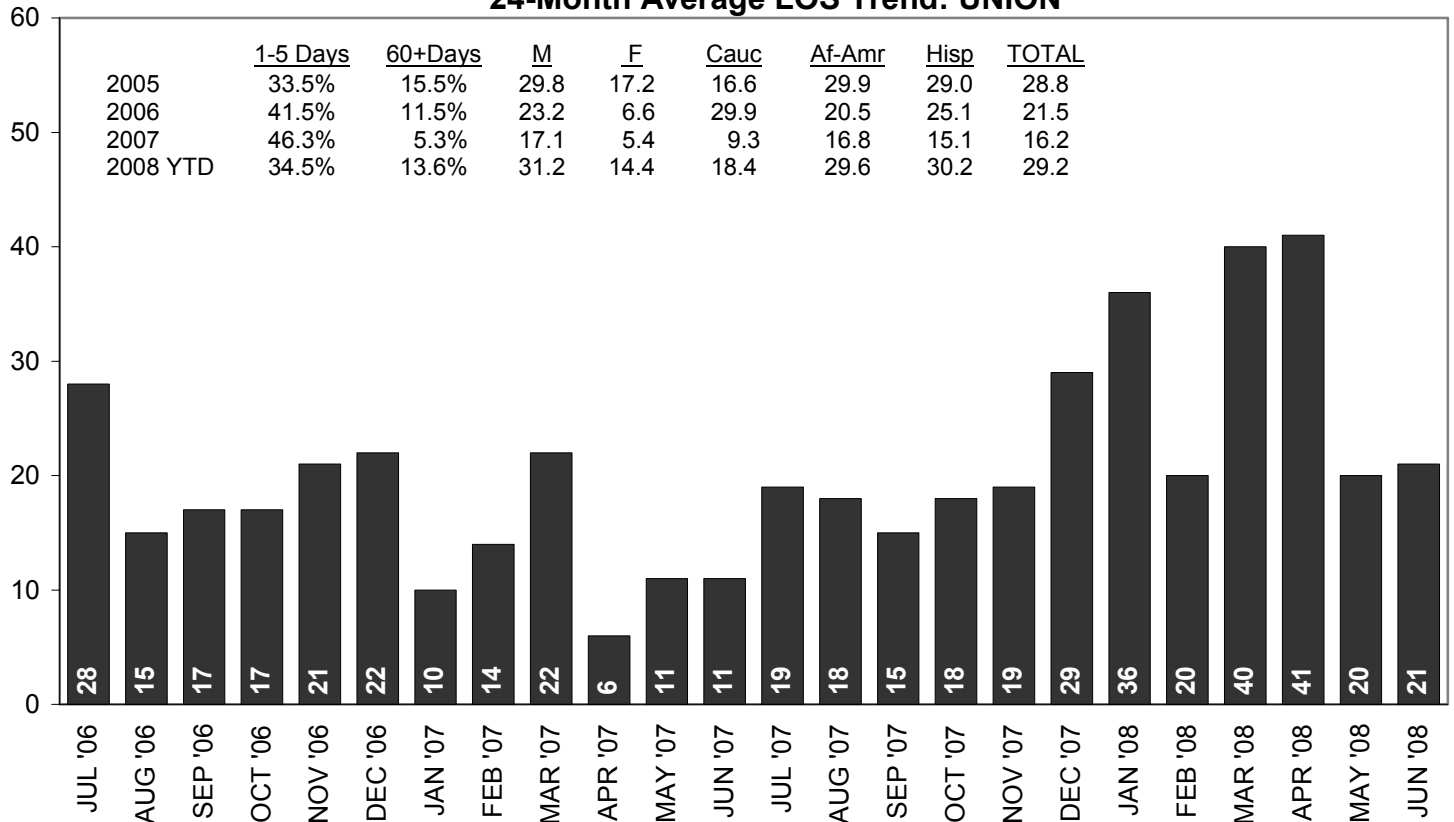
24-Month Average LOS Trend: MONMOUTH



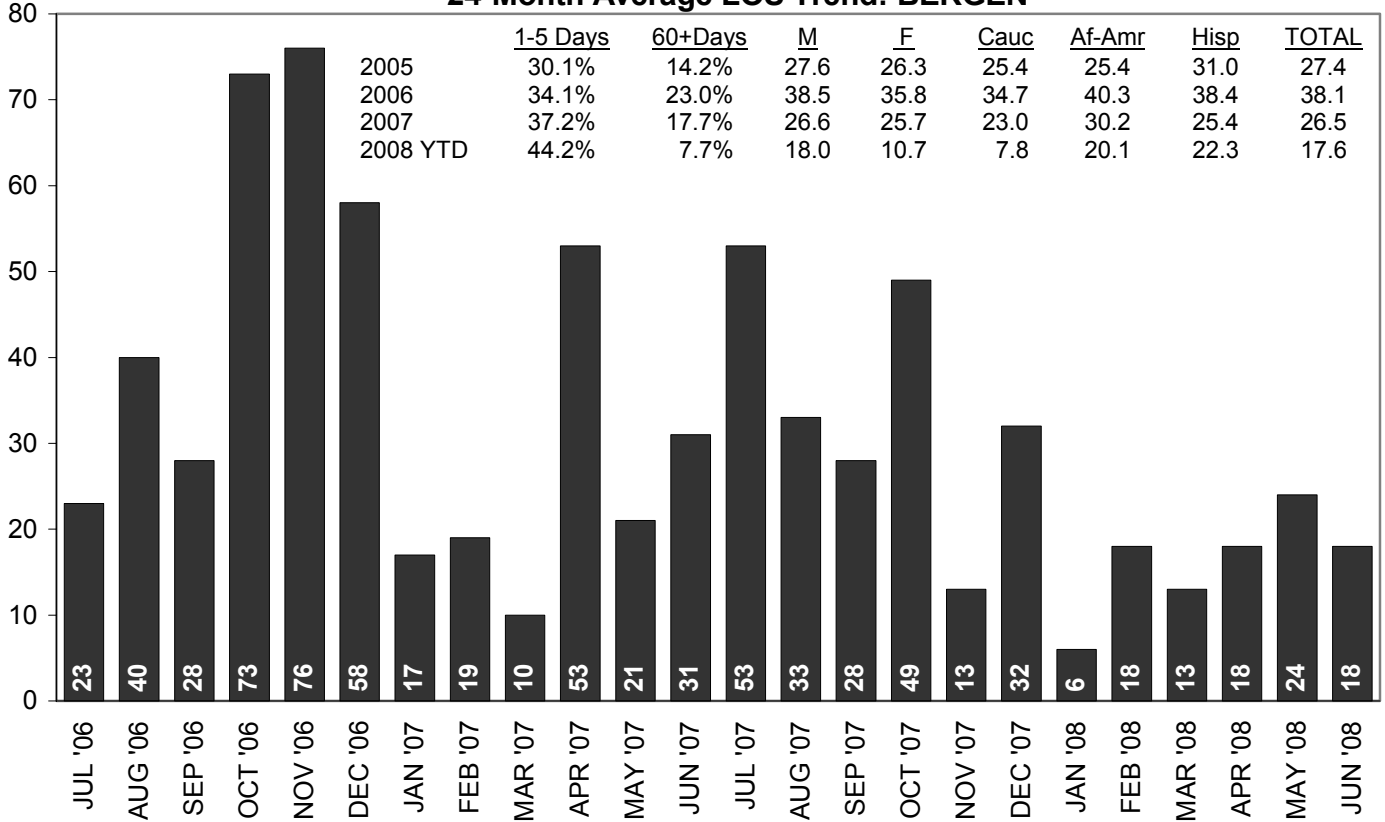
24-Month Average LOS Trend: HUDSON



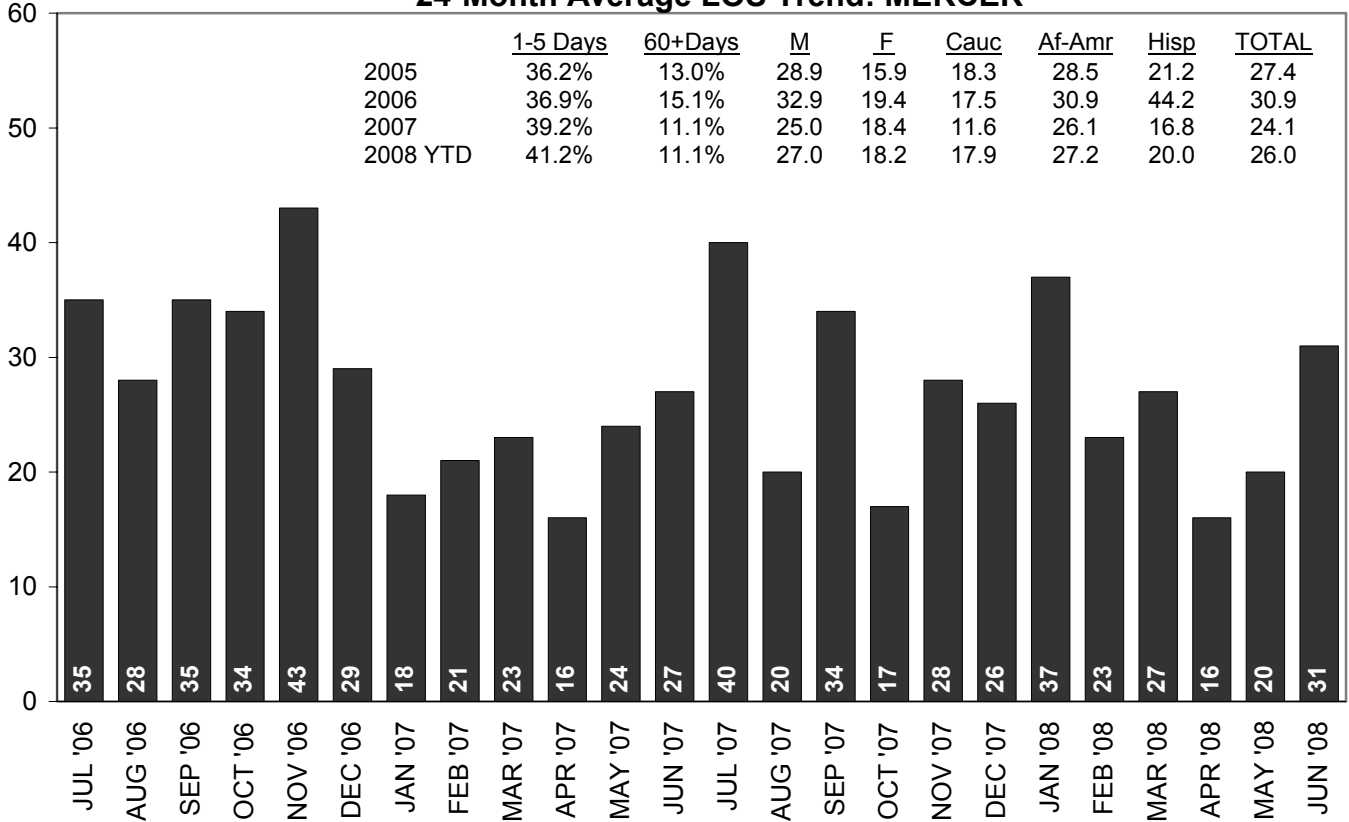
24-Month Average LOS Trend: UNION



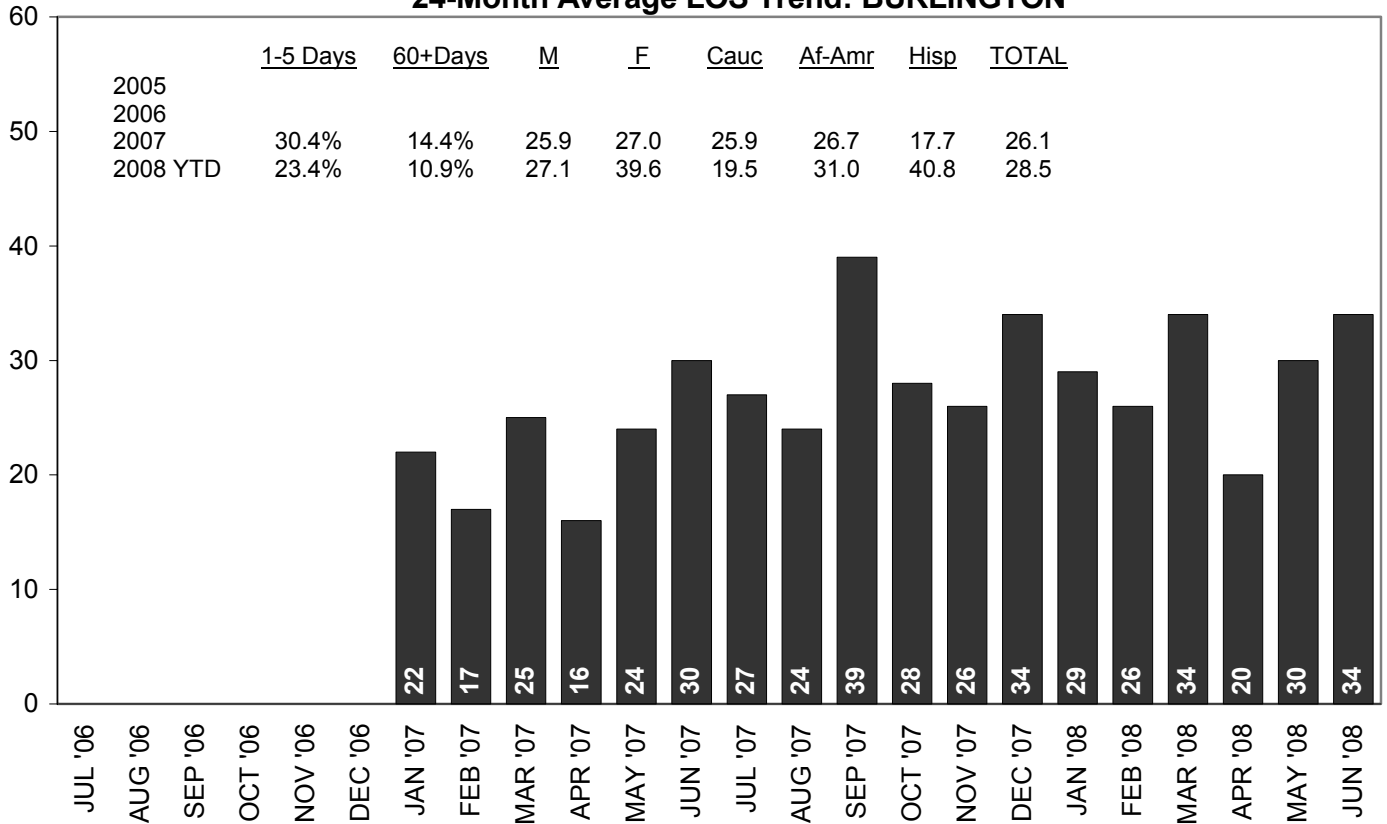
24-Month Average LOS Trend: BERGEN



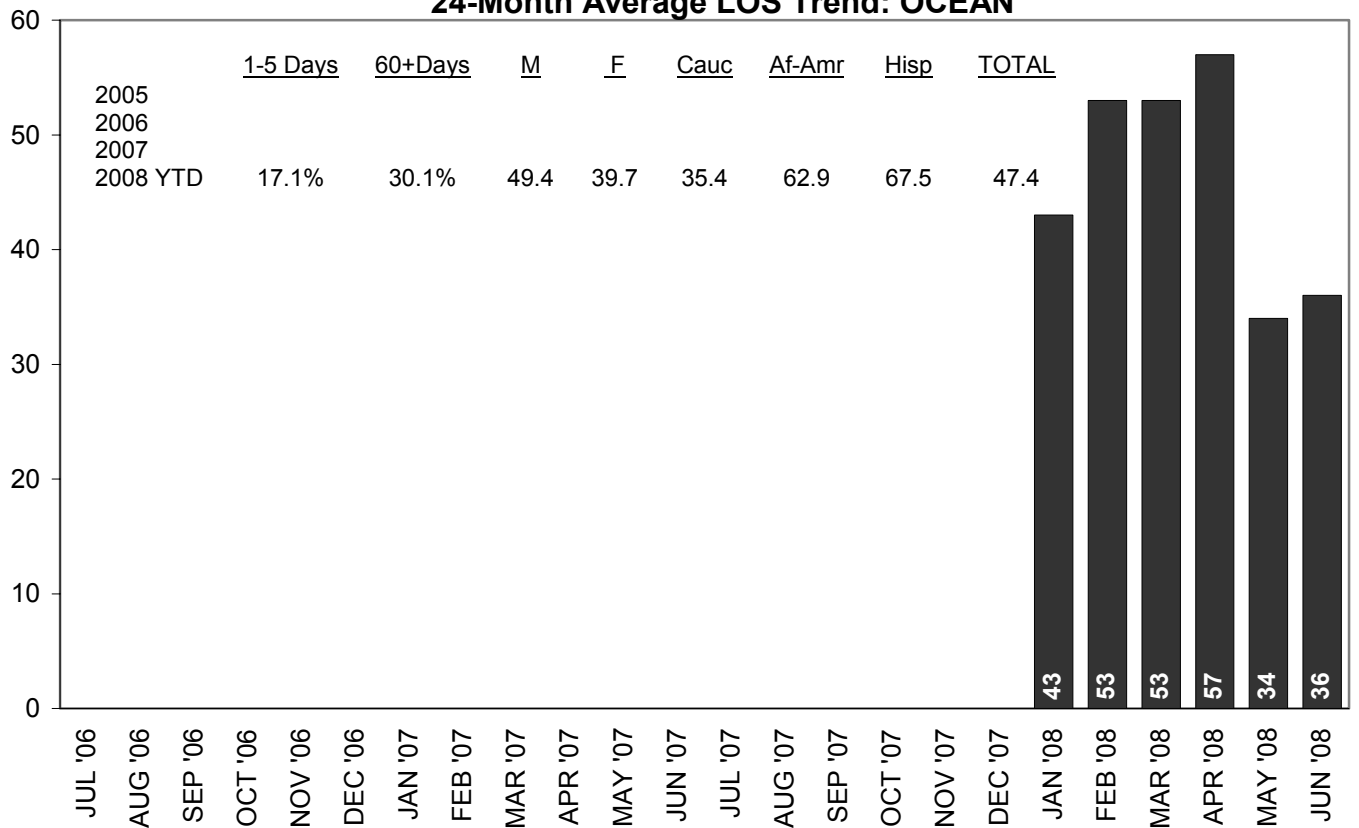
24-Month Average LOS Trend: MERCER



24-Month Average LOS Trend: BURLINGTON



24-Month Average LOS Trend: OCEAN



YOUTH POPULATION AND ESTIMATE OF MINORITY OVERREPRESENTATION IN DETENTION

	Total Youth Population	Minority Representation in Youth Population ^a	Minority Representation in Detention ^b	Difference: % Minority in Youth Population vs. Detention
Atlantic	31,263	45.1%	88.4%	+43.3 pts
Bergen	96,507	36.3%	96.9%	+60.6 pts
Burlington	50,112	28.6%	79.5%	+50.9 pts
Camden	61,809	42.6%	89.7%	+47.1 pts
Essex	91,383	69.3%	99.5%	+30.2 pts
Hudson	58,188	75.1%	98.0%	+22.9 pts
Mercer	39,760	46.7%	96.9%	+50.2 pts
Monmouth	75,576	22.5%	90.2%	+67.7 pts
Ocean	57,693	15.0%	48.2%	+33.2 pts
Union	60,404	54.9%	98.2%	+43.3 pts

^a Percent of population ages 10-17 years, 2006. Source: OJJDP Statistical Briefing Book. ^b Based on ADP Year-to-Date 2008.

ADMISSION PROCESS

ADMITTED VIA:		Atl	Cam	Esx ^a	Mon	Hud ^b	Mer	Uni	Ber	Ocn
Processed Through Intake Services	2005	86.4%	78.7%	90.5%	82.9%					
	2006	90.6%	80.8%	86.7%	85.7%	93.5%		97.2%		
	2007	93.7%	77.9%	85.9%	88.5%	93.0%		95.7%		
	YTD 2008	88.1%	72.1%	83.3%	93.6%	88.1%	93.7%	92.1%	63.5%	33.0%
Remanded at Court	2005	8.3%	21.3%	8.6%	6.7%					
	2006	6.8%	19.2%	10.9%	6.7%	4.9%		1.1%		
	2007	4.1%	21.8%	11.5%	4.1%	6.3%		2.8%		
	YTD 2008	10.4%	27.3%	12.2%	1.3%	11.1%	6.0%	3.5%	22.2%	15.5%
Transfer from Other YDC, Jail, Secure Facility	2005	3.0%	0.0%	0.8%	3.7%					
	2006	1.0%	0.0%	2.3%	3.0%	0.9%		1.1%		
	2007	2.0%	0.1%	2.3%	3.5%	0.7%		1.5%		
	YTD 2008	0.5%	0.6%	3.8%	5.1%	0.2%	0.3%	3.5%	1.6%	1.0%
Other Process ¹	2005	2.3%	0.0%	0.1%	6.7%					
	2006	1.7%	0.0%	0.1%	4.7%	0.7%		0.6%		
	2007	0.2%	0.1%	0.2%	3.8%	0.0%		0.0%		
	YTD 2008	1.0%	0.0%	0.7%	0.0%	0.6%	0.0%	0.9%	12.7%	50.5%

^aEssex's 2005 data covers Jun-Dec. ^bHudson's 2006 data covers May-Dec.

NATURE OF CURRENT OFFENSE/REASON FOR DETENTION

		Atl	Cam	Esx ^a	Mon	Hud ^b	Mer	Uni	Ber	Ocn	Bur
Delinquency Charges Among Current Offenses	^c 2003	60.8%	61.3%	83.9%	53.0%	75.2%					
	2005	65.1%	65.5%	86.6%	66.3%	82.4%	78.1%		73.5%		
	2006	70.5%	61.4%	86.6%	67.5%	82.7%	69.8%	81.7%	66.9%		
	2007	70.1%	67.0%	87.2%	73.5%	85.5%	68.5%	80.7%	69.7%		58.3%
	YTD 2008	65.8%	69.8%	82.4%	78.2%	80.5%	74.7%	78.4%	73.0%	36.9%	55.6%
VOP No New Charges	2003	15.7%	26.8%	4.3%	32.1%	10.3%					
	2005	16.6%	24.7%	4.5%	16.7%	7.8%	11.4%		26.5%		
	2006	10.4%	29.0%	3.1%	19.2%	4.2%	20.3%	11.5%	33.1%		
	2007	10.0%	22.7%	2.6%	14.7%	4.7%	18.3%	12.7%	29.4%		24.1%
	YTD 2008	18.1%	14.4%	5.6%	12.2%	4.3%	14.2%	16.7%	20.6%	45.6%	26.3%
FTA No New Charges	2003	7.8%	11.0%	10.0%	7.1%	2.7%					
	2005	6.0%	8.5%	7.2%	11.3%	2.6%	5.6%		0.0%		
	2006	3.9%	7.4%	7.9%	5.7%	4.5%	6.9%	5.7%	0.0%		
	2007	7.9%	7.3%	7.6%	4.4%	3.3%	7.4%	3.4%	0.0%		3.4%
	YTD 2008	6.2%	10.9%	7.7%	5.1%	3.9%	8.5%	1.8%	0.0%	3.9%	6.0%
Violation of Detention Alternative No New Charges	2003	12.7%	0.2%	0.2%	7.1%	6.8%					
	2005	9.9%	0.5%	1.1%	4.2%	1.7%	2.0%		0.0%		
	2006	13.3%	1.2%	1.3%	5.4%	3.7%	2.4%	0.2%	0.0%		
	2007	9.8%	2.1%	2.5%	6.5%	2.6%	3.0%	1.9%	0.8%		2.2%
	YTD 2008	8.3%	4.6%	3.9%	4.5%	4.3%	2.5%	2.6%	6.3%	10.7%	3.0%
Other Violation or Non-Delinquent Event ²	2003	0.6%	0.6%	1.3%	0.6%	5.0%					
	2005	1.2%	0.7%	0.6%	0.2%	4.9%	2.4%		0.0%		
	2006	1.5%	0.9%	1.0%	1.7%	3.9%	0.6%	0.4%	0.0%		
	2007	1.8%	0.8%	0.0%	0.6%	3.5%	2.1%	1.1%	0.0%		11.7%
	YTD 2008	1.0%	0.0%	0.5%	0.0%	7.0%	0.0%	0.4%	0.0%	2.9%	9.0%
Other Reason	2003	2.4%	0.2%	0.2%	0.0%	0.0%					
	2005	1.2%	0.1%	0.0%	1.2%	0.6%	0.6%		0.0%		
	2006	0.5%	0.2%	0.1%	0.5%	0.9%	0.0%	0.4%	0.0%		
	2007	0.5%	0.1%	0.1%	0.3%	0.4%	0.7%	0.2%	0.0%		0.3%
	YTD 2008	0.5%	0.3%	0.0%	0.0%	0.0%	0.0%	0.0%	0.0%	0.0%	0.0%

^aEssex's 2005 data covers Jun-Dec. ^bHudson's 2005 data covers Sep-Dec.

^c2003 figures are based on four months of admissions (Jan, Apr, Jul, Oct) from each of the original 5 sites.

AVERAGE MONTHLY DEPARTURES FROM DETENTION

	Atl	Cam	Esx	Mon	Hud ^c	Mer	Uni ^d	Ber	Ocn	Bur
2005	32.8	108.6	159.8	34.9		69.8	44.6	20.5		
2006	33.5	86.3	176.1	34.0	81.4	62.2	41.2	11.3		
2007	35.6	64.5	168.2	27.2	84.8	54.6	34.6	9.4		26.1
2008 (YTD)	29.3	60.0	139.0	24.7	81.3	51.0	36.7	8.7	20.5	21.3

NATURE OF DEPARTURES FROM DETENTION

RELEASE TO:		Atl	Cam ^a	Esx ^b	Mon	Hud ^c	Mer	Uni ^d	Ber	Ocn ³	Bur
Detention Alternative, Shelter⁴	2005	52.6%		32.6%	40.6%	19.4%	28.6%				
	2006	62.2%	40.7%	37.9%	42.9%	29.5%	31.6%		25.2%		
	2007	56.4%	41.0%	48.1%	46.6%	41.3%	22.7%	33.6%	34.5%		12.5%
	YTD 2008	52.3%	40.8%	50.6%	51.4%	55.1%	29.1%	31.4%	57.7%	30.9%	15.6%
Parent, Other Adult, ROR Pre-Dispo	2005	6.6%		36.1%	17.9%	47.3%	21.4%				
	2006	3.2%	4.2%	33.2%	19.4%	26.2%	21.4%		15.6%		
	2007	6.1%	4.0%	17.9%	16.3%	21.6%	23.4%	26.0%	11.5%		43.8%
	YTD 2008	1.7%	2.8%	11.9%	12.2%	8.4%	20.9%	17.7%	7.7%	3.3%	32.0%
Other Service Agency/ Plcmnt Pre-Dispo	2005	1.5%		0.3%	5.0%	0.4%	0.4%				
	2006	2.2%	0.2%	0.3%	1.7%	1.4%	0.4%		0.0%		
	2007	1.4%	0.3%	0.3%	4.6%	1.8%	0.2%	1.9%	0.9%		7.7%
	YTD 2008	0.6%	1.1%	0.1%	2.7%	0.8%	1.0%	0.5%	0.0%	1.6%	4.7%
Dispositional Placement	2005	32.7%		27.8%	31.0%	22.7%	43.1%				
	2006	23.1%	49.0%	22.2%	30.9%	33.0%	40.6%		45.2%		
	2007	29.0%	49.0%	25.9%	25.2%	23.8%	45.3%	27.2%	34.5%		22.7%
	YTD 2008	38.1%	48.6%	28.9%	27.0%	22.7%	40.5%	36.8%	26.9%	61.8%	31.2%
Jail, Bail, Upon/After Waiver	2005	1.0%		1.4%	2.4%	3.7%	0.7%				
	2006	3.0%	1.5%	1.1%	0.7%	1.9%	0.7%		7.4%		
	2007	1.9%	1.8%	0.8%	1.5%	2.3%	1.1%	1.9%	3.5%		2.2%
	YTD 2008	3.4%	4.4%	1.8%	0.7%	2.5%	0.3%	2.7%	0.0%	0.8%	0.0%
Other YDC/ Other Authorities	2005	5.1%		0.5%	3.1%	0.7%	2.9%				
	2006	4.7%	3.1%	1.5%	3.7%	1.4%	2.3%		3.7%		
	2007	4.4%	2.7%	1.7%	4.3%	2.6%	2.4%	6.0%	13.3%		8.6%
	YTD 2008	4.0%	1.7%	1.9%	5.4%	3.9%	3.6%	8.6%	5.8%	1.6%	8.6%
Dismissed, Diverted, Similar	2005	0.5%		1.2%	0.0%	5.5%	3.0%				
	2006	1.5%	1.1%	2.2%	0.7%	4.7%	2.7%		0.0%		
	2007	0.7%	0.6%	3.6%	0.9%	6.6%	4.4%	2.3%	0.0%		2.6%
	YTD 2008	0.0%	0.6%	3.5%	0.7%	6.4%	2.0%	2.3%	1.9%	0.0%	7.8%
Time Served	2005	0.0%		0.0%	0.0%	0.0%	0.0%				
	2006	0.0%	0.0%	1.7%	0.0%	0.0%	0.3%		2.2%		
	2007	0.0%	0.0%	1.6%	0.3%	0.1%	0.2%	0.0%	1.8%		0.0%
	YTD 2008	0.0%	0.0%	1.3%	0.0%	0.0%	2.6%	0.0%	0.0%	0.0%	0.0%
Other	2005	0.0%		0.0%	0.0%	0.4%	0.0%				
	2006	0.0%	0.2%	0.0%	0.0%	1.8%	0.0%		0.7%		
	2007	0.0%	0.6%	0.1%	0.3%	0.1%	0.3%	1.1%	0.0%		0.0%
	YTD 2008	0.0%	0.0%	0.0%	0.0%	0.2%	0.0%	0.0%	0.0%	0.0%	0.0%

^aCamden's 2006 data is Jul-Dec. ^bEssex's 2005 data is Jun-Dec. ^cHudson's 2005 data is Oct-Dec. ^dUnion's 2007 data begins with May.

AVERAGE LOS BY DEPARTURE TYPE

RELEASE TO:			Atl	Cam	Esx	Mon	Hud	Mer	Uni ^a	Ber	Ocn	Bur
Detention Alternative, Shelter	2007	LOS N	10.4 241	10.1 317	6.5 970	8.7 152	5.5 420	14.5 149	10.6 89	20.6 39		20.4 39
	YTD 2008	LOS N	11.3 92	8.7 147	8.7 422	9.6 76	4.5 269	9.8 89	13.9 69	11.3 30	27.1 38	20.0 20
Parent, Other Adult, ROR Pre-Dispo	2007	LOS N	2.9 26	4.4 31	3.2 361	6.9 53	3.3 220	2.5 153	5.6 69	2.8 13		12.3 137
	YTD 2008	LOS N	1.7 3	4.0 10	4.0 99	10.8 18	3.6 41	2.8 64	6.1 39	4.3 4	3.8 4	13.1 41
Other Service Agency/ Plcmnt Pre-Dispo	2007	LOS N	19.3 6	18.0 2	22.7 6	13.3 15	6.8 18	21.0 1	9.8 5	64.0 1		20.7 24
	YTD 2008	LOS N	54.0 1	18.8 4	8.0 1	9.0 4	8.8 4	27.7 3	4.0 1	- 0	16.0 2	9.0 6
Dispo- sitional Placement	2007	LOS N	55.1 124	28.6 379	61.7 523	55.3 82	65.4 242	37.5 297	34.0 72	44.1 39		56.4 71
	YTD 2008	LOS N	50.6 67	38.4 175	60.4 241	61.2 40	56.9 111	40.6 124	43.0 81	36.8 14	58.6 76	48.9 40
Jail, Bail, Upon/After Waiver	2007	LOS N	67.3 8	80.1 14	111.1 17	167.0 5	156.6 23	171.6 7	85.6 5	49.3 4		76.6 7
	YTD 2008	LOS N	32.0 6	138.9 16	213.9 15	172.0 1	250.3 12	356.0 1	263.2 6	- 0	288.0 1	- 0
Other YDC/ Other Authorities	2007	LOS N	9.7 19	4.4 21	14.6 35	16.3 14	3.0 26	21.1 16	11.9 16	6.5 15		11.4 27
	YTD 2008	LOS N	8.3 7	6.2 6	14.1 16	28.8 8	4.4 19	9.4 11	5.2 19	7.3 3	3.5 2	11.3 11
Dismissed, Diverted, Similar	2007	LOS N	6.0 3	6.9 7	21.5 72	42.7 3	13.4 67	15.7 29	17.0 6	- 0		44.4 8
	YTD 2008	LOS N	- 0	27.0 2	33.3 29	72.0 1	4.1 31	41.7 6	13.2 5	22.0 1	- 0	57.3 10
Time Served	2007	LOS N	- 0	- 0	76.0 33	7.0 1	106.0 1	28.0 1	- 0	35.5 2		- 0
	YTD 2008	LOS N	- 0	- 0	88.3 11	- 0	- 0	135.9 8	- 0	- 0	- 0	- 0
Other	2007	LOS N	- 0	29.7 3	10.0 1	27.0 1	2.0 1	28.0 2	1.3 3	- 0		- 0
	YTD 2008	LOS N	- 0	- 0	- 0	- 0	15.0 1	- 0	- 0	- 0	- 0	- 0

^aUnion's 2007 departure type data begins with May.

DETENTION ALTERNATIVE OUTCOMES

	Atlantic	Camden ^a	Essex ^b	Monmouth	Hudson
Successful Completion	2005		76.0%	75.6%	79.4%
	2006	70.6%	81.4%	78.1%	78.0%
	2007	73.6%		77.5%	84.7%
	YTD 2008	71.9%		79.1%	86.2%
New Charge(s)	2005		1.0%	13.3%	2.9%
	2006	9.5%	4.3%	6.7%	6.6%
	2007	3.5%		6.6%	3.9%
	YTD 2008	4.5%		5.8%	2.3%
Violation/Non-Compliance (No New Charges)	2005		22.9%	10.7%	17.6%
	2006	19.9%	14.3%	15.2%	15.4%
	2007	22.8%		15.9%	11.3%
	YTD 2008	23.6%		15.0%	11.5%

^aCamden's 2005 & 2006 figures cover Sep-Dec of each year. ^bEssex's 2005 figures cover Jun-Dec.

Notes

General Note: If and when data modifications or updates occur, previously distributed reports are not adjusted and redistributed. Instead, subsequent reports are adjusted to reflect the most recently verified data for any reporting period.

Note Regarding LOS: Length of stay is calculated based on youth departing detention during the time period of interest, and for each youth, LOS is the number of days between and including the departure date and the admission date.

* Note regarding capacity/ADP: Union and Bergen both have a cap/restriction on facility population; ADP figures post-cap/restriction for both sites include youth held out-of-county, i.e., reflect total youth from that county in secure detention. Bergen's full, rated capacity is 41; restricted capacity is 14. Prior to moving into a new detention facility in December, 2007, Camden developed a self-imposed soft-cap of 63, at which point Camden housed girls out-of-county. Like Union and Bergen, ADP includes these girls. Finally, note that LOS figures for these counties reflects the length of stay in secure detention, including time spent in-county and out-of-county.

** Essex expanded alternative ADP data capacity to include race and gender in September 2007, so 2007 figures for % minority and % female cover September-December.

*** Essex 2005 alternatives admissions data include June-December (7 months).

^ Ocean's capacity of 30 includes youth on committed status; ADP figures reflect only youth on detention status. Total ADP (detention + committed) for 2005=26.5, 2006=23.8, and 2007=30.3.