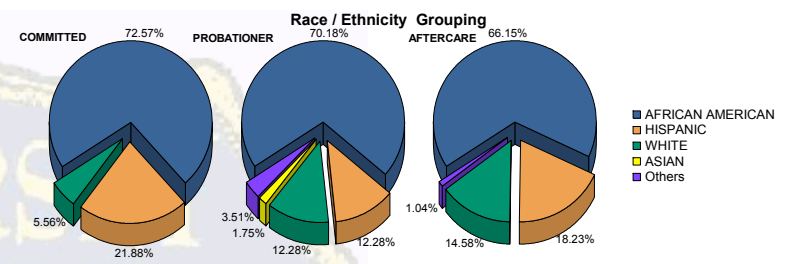


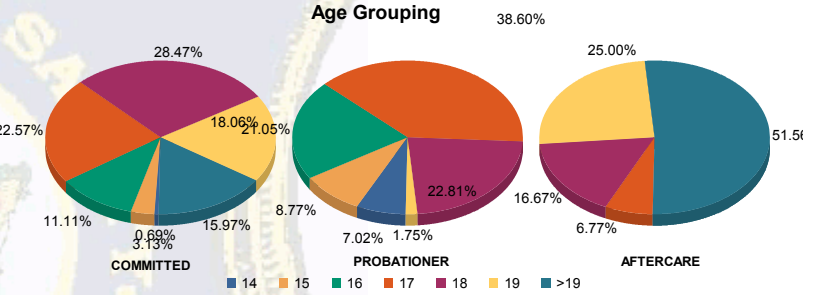


Juvenile Demographics and Statistics

Race/Ethnicity	COMMITTED		PROBATIONER		AFTERCARE		Total							
	MALE	FEMALE	MALE	FEMALE	MALE	FEMALE								
AFRICAN AMERICAN	204	73.91%	5	41.67%	38	70.37%	2	66.67%	118	65.56%	9	75.00%	376	70.02%
HISPANIC	60	21.74%	3	25.00%	6	11.11%	1	33.33%	33	18.33%	2	16.67%	105	19.55%
WHITE	12	4.35%	4	33.33%	7	12.96%	0	0.00%	27	15.00%	1	8.33%	51	9.50%
ASIAN	0	0.00%	0	0.00%	1	1.85%	0	0.00%	0	0.00%	0	0.00%	1	0.19%
Others	0	0.00%	0	0.00%	2	3.70%	0	0.00%	2	1.11%	0	0.00%	4	0.74%
<b>Total</b>	<b>276</b>	<b>100.00%</b>	<b>12</b>	<b>100.00%</b>	<b>54</b>	<b>100.00%</b>	<b>3</b>	<b>100.00%</b>	<b>180</b>	<b>100.00%</b>	<b>12</b>	<b>100.00%</b>	<b>537</b>	<b>100.00%</b>



Age	COMMITTED	PROBATIONER	AFTERCARE	Total
14	2	0	0	2
15	9	0	0	9
16	31	1	1	33
17	61	4	2	67
18	80	2	13	95
19	50	2	1	53
>19	43	3	0	46
<b>Total</b>	<b>276</b>	<b>12</b>	<b>3</b>	<b>291</b>

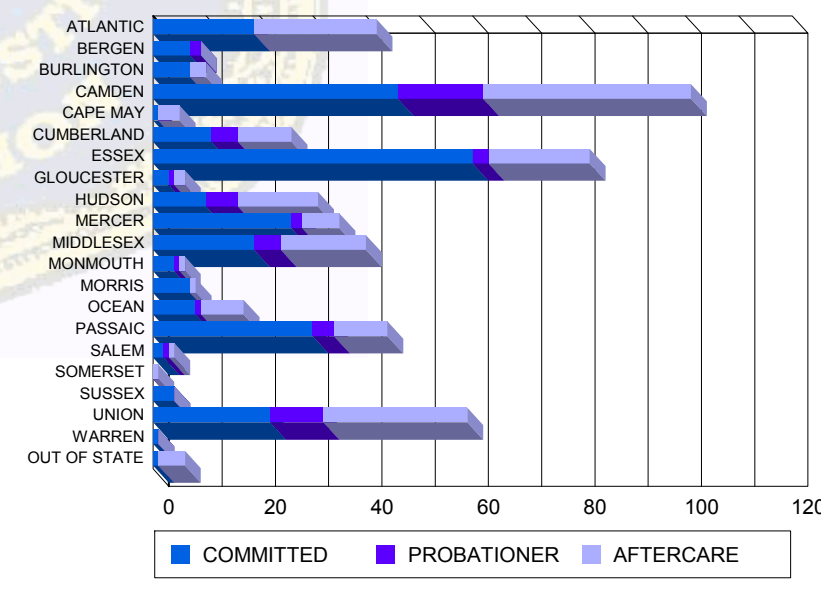


Average Age	COMMITTED	PROBATIONER	AFTERCARE	Total
Average Age	18.07	18.33	16.67	18.70

**Sentencing County**

Sentencing County	COMMITTED	PROBATIONER	AFTERCARE	Total
ATLANTIC	19	0	0	19
BERGEN	7	0	0	7
BURLINGTON	7	0	0	7
CAMDEN	44	2	14	60
CAPE MAY	0	1	0	1
CUMBERLAND	11	0	5	16
ESSEX	58	2	3	63
GLOUCESTER	2	1	1	4
HUDSON	10	0	6	16
MERCER	24	2	2	28
MIDDLESEX	18	1	5	24
MONMOUTH	4	0	1	5
MORRIS	6	1	0	7
OCEAN	8	0	0	8
PASSAIC	29	1	4	34
SALEM	2	0	1	3
SOMERSET	0	0	0	0
SUSSEX	3	1	0	4
UNION	22	0	10	32
WARREN	1	0	0	1
OUT OF STATE	1	0	0	1
<b>Total</b>	<b>276</b>	<b>12</b>	<b>54</b>	<b>342</b>

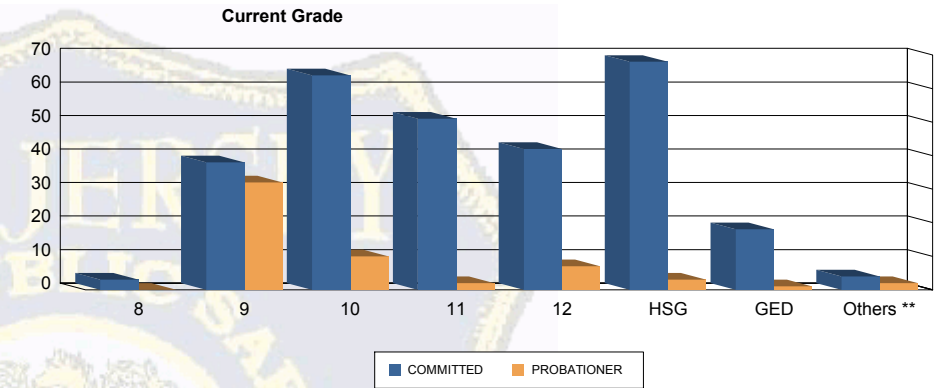
**Count of Juveniles By Sentencing County**





Juvenile Demographics and Statistics

Current Grade	COMMITTED		PROBATIONER		Total	
	MALE	FEMALE	MALE	FEMALE		
8	3 (1.09%)	0 (0.00%)	0 (0.00%)	0 (0.00%)	3 (0.87%)	
9	36 (13.04%)	2 (16.67%)	31 (57.41%)	1 (33.33%)	70 (20.29%)	
10	62 (22.46%)	2 (16.67%)	8 (14.81%)	2 (66.67%)	74 (21.45%)	
11	48 (17.39%)	3 (25.00%)	2 (3.70%)	0 (0.00%)	53 (15.36%)	
12	40 (14.49%)	2 (16.67%)	7 (12.96%)	0 (0.00%)	49 (14.20%)	
HSG	67 (24.28%)	1 (8.33%)	3 (5.56%)	0 (0.00%)	71 (20.58%)	
GED	16 (5.80%)	2 (16.67%)	1 (1.85%)	0 (0.00%)	19 (5.51%)	
Others **	4 (1.45%)	0 (0.00%)	2 (3.70%)	0 (0.00%)	6 (1.74%)	
<b>Total</b>	<b>276 (100.00%)</b>	<b>12 (100.00%)</b>	<b>54 (100.00%)</b>	<b>3 (100.00%)</b>	<b>345 (100.00%)</b>	

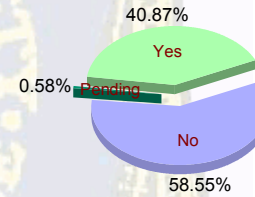


\*\* Includes Aged Out Juveniles and Pending Records

Special Education Services

Yes	114 (41.30%)	7 (58.33%)	19 (35.19%)	1 (33.33%)	141 (40.87%)
No	162 (58.70%)	5 (41.67%)	33 (61.11%)	2 (66.67%)	202 (58.55%)
Pending	0 (0.00%)	0 (0.00%)	2 (3.70%)	0 (0.00%)	2 (0.58%)
<b>Total</b>	<b>276 (100.00%)</b>	<b>12 (100.00%)</b>	<b>54 (100.00%)</b>	<b>3 (100.00%)</b>	<b>345 (100.00%)</b>

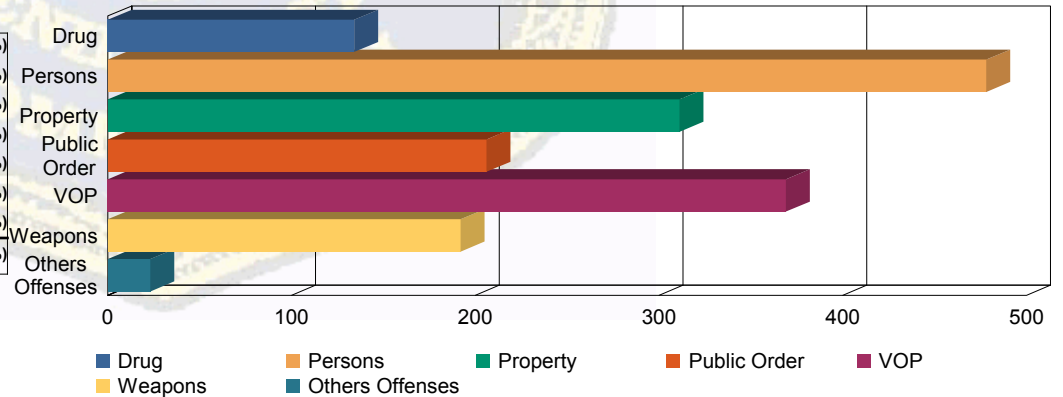
Special Education



Offense Categories

Drug	119 (7.83%)	3 (4.84%)	12 (9.45%)	0 (0.00%)	134 (7.82%)
Persons	432 (28.42%)	15 (24.19%)	30 (23.62%)	1 (25.00%)	478 (27.90%)
Property	283 (18.62%)	12 (19.35%)	16 (12.60%)	0 (0.00%)	311 (18.16%)
Public Order	183 (12.04%)	11 (17.74%)	12 (9.45%)	0 (0.00%)	206 (12.03%)
VOP	311 (20.46%)	13 (20.97%)	42 (33.07%)	3 (75.00%)	369 (21.54%)
Weapons	172 (11.32%)	7 (11.29%)	13 (10.24%)	0 (0.00%)	192 (11.21%)
Others Offenses	20 (1.32%)	1 (1.61%)	2 (1.57%)	0 (0.00%)	23 (1.34%)
<b>Total *</b>	<b>1,520 (100.00%)</b>	<b>62 (100.00%)</b>	<b>127 (100.00%)</b>	<b>4 (100.00%)</b>	<b>1,713 (100.00%)</b>

Offense Categories



\* Juveniles may have multiple offenses