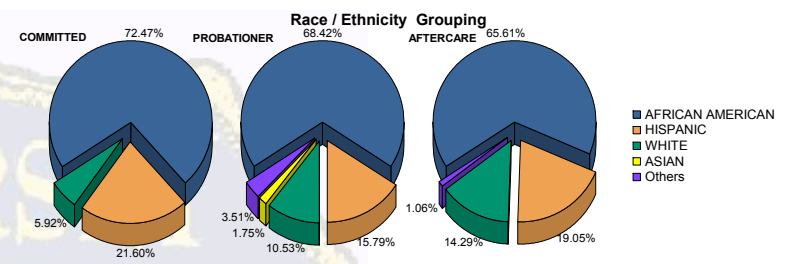


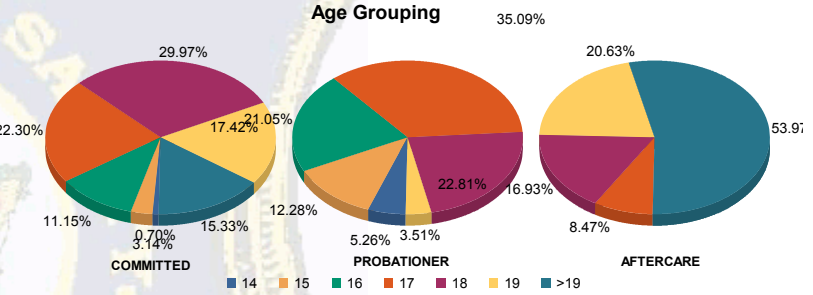


Juvenile Demographics and Statistics

Race/Ethnicity	COMMITTED		PROBATIONER		AFTERCARE		Total							
	MALE	FEMALE	MALE	FEMALE	MALE	FEMALE								
AFRICAN AMERICAN	202	73.45%	6	50.00%	37	68.52%	2	66.67%	115	64.97%	9	75.00%	371	69.61%
HISPANIC	59	21.45%	3	25.00%	8	14.81%	1	33.33%	34	19.21%	2	16.67%	107	20.08%
WHITE	14	5.09%	3	25.00%	6	11.11%	0	0.00%	26	14.69%	1	8.33%	50	9.38%
ASIAN	0	0.00%	0	0.00%	1	1.85%	0	0.00%	0	0.00%	0	0.00%	1	0.19%
Others	0	0.00%	0	0.00%	2	3.70%	0	0.00%	2	1.13%	0	0.00%	4	0.75%
Total	275	100.00%	12	100.00%	54	100.00%	3	100.00%	177	100.00%	12	100.00%	533	100.00%



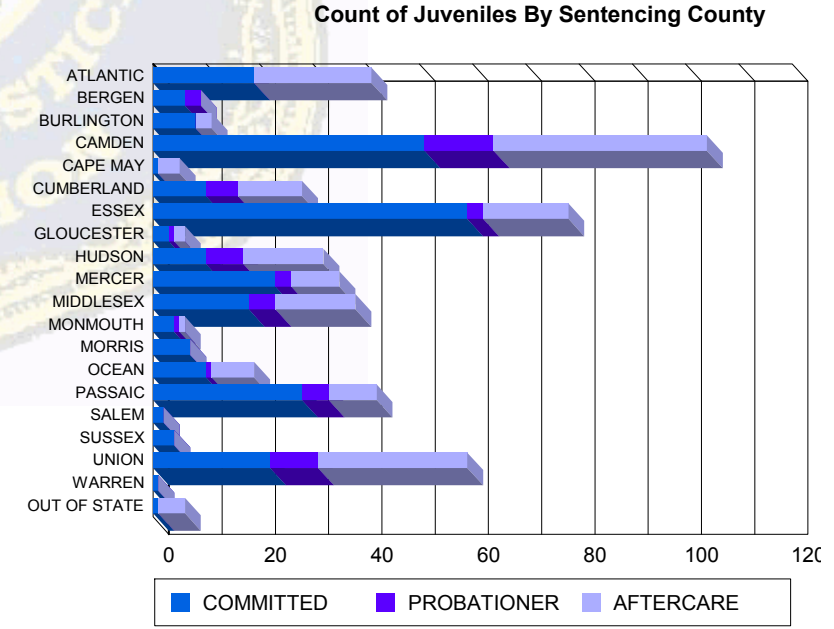
Age	COMMITTED	PROBATIONER	AFTERCARE	Total
14	2 (0.73%)	0 (0.00%)	3 (5.56%)	5 (0.94%)
15	9 (3.27%)	0 (0.00%)	7 (12.96%)	16 (3.00%)
16	30 (10.91%)	2 (16.67%)	11 (20.37%)	44 (8.26%)
17	60 (21.82%)	4 (33.33%)	18 (33.33%)	100 (18.76%)
18	83 (30.18%)	3 (25.00%)	13 (24.07%)	131 (24.58%)
19	49 (17.82%)	1 (8.33%)	2 (3.70%)	91 (17.07%)
>19	42 (15.27%)	2 (16.67%)	0 (0.00%)	146 (27.39%)
Total	275	12	54	533



Average Age	COMMITTED	PROBATIONER	AFTERCARE	Total
Average Age	18.09	17.83	16.69	18.70

Sentencing County

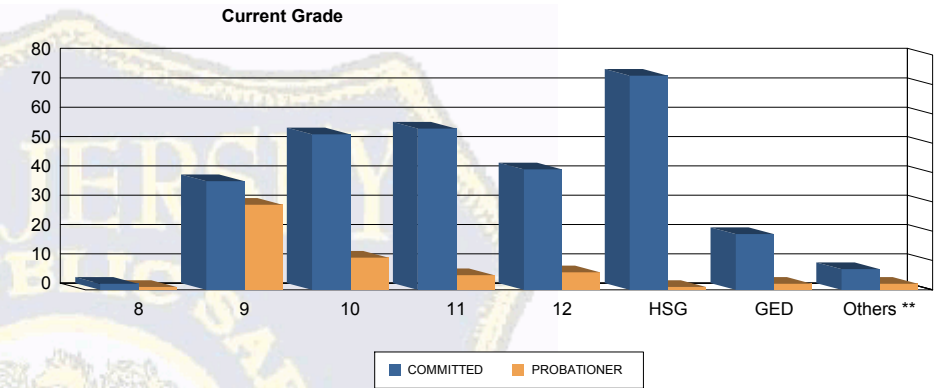
Sentencing County	COMMITTED	PROBATIONER	AFTERCARE	Total
ATLANTIC	19 (6.91%)	0 (0.00%)	0 (0.00%)	20 (11.30%)
BERGEN	6 (2.18%)	0 (0.00%)	3 (5.56%)	9 (1.69%)
BURLINGTON	8 (2.91%)	0 (0.00%)	0 (0.00%)	3 (1.69%)
CAMDEN	50 (18.18%)	1 (8.33%)	11 (20.37%)	37 (20.90%)
CAPE MAY	0 (0.00%)	1 (8.33%)	0 (0.00%)	4 (2.26%)
CUMBERLAND	10 (3.64%)	0 (0.00%)	6 (11.11%)	10 (5.65%)
ESSEX	57 (20.73%)	2 (16.67%)	3 (5.56%)	15 (8.47%)
GLOUCESTER	2 (0.73%)	1 (8.33%)	1 (1.85%)	2 (1.13%)
HUDSON	10 (3.64%)	0 (0.00%)	7 (12.96%)	14 (7.91%)
MERCER	20 (7.27%)	3 (25.00%)	3 (5.56%)	8 (4.52%)
MIDDLESEX	17 (6.18%)	1 (8.33%)	5 (9.26%)	15 (8.47%)
MONMOUTH	4 (1.45%)	0 (0.00%)	1 (1.85%)	1 (0.56%)
MORRIS	6 (2.18%)	1 (8.33%)	0 (0.00%)	0 (0.00%)
OCEAN	10 (3.64%)	0 (0.00%)	0 (0.00%)	1 (33.33%)
PASSAIC	27 (9.82%)	1 (8.33%)	5 (9.26%)	9 (5.08%)
SALEM	2 (0.73%)	0 (0.00%)	0 (0.00%)	0 (0.00%)
SUSSEX	3 (1.09%)	1 (8.33%)	0 (0.00%)	0 (0.00%)
UNION	22 (8.00%)	0 (0.00%)	9 (16.67%)	26 (14.69%)
WARREN	1 (0.36%)	0 (0.00%)	0 (0.00%)	0 (0.00%)
OUT OF STATE	1 (0.36%)	0 (0.00%)	0 (0.00%)	5 (2.82%)
Total	275	12	54	533





Juvenile Demographics and Statistics

Current Grade	COMMITTED		PROBATIONER		Total
	MALE	FEMALE	MALE	FEMALE	
8	2 (0.73%)	0 0.00%	1 (1.85%)	0 0.00%	3 (0.87%)
9	35 (12.73%)	2 (16.67%)	28 (51.85%)	1 (33.33%)	66 (19.19%)
10	51 (18.55%)	2 (16.67%)	10 (18.52%)	1 (33.33%)	64 (18.60%)
11	53 (19.27%)	2 (16.67%)	4 (7.41%)	1 (33.33%)	60 (17.44%)
12	39 (14.18%)	2 (16.67%)	6 (11.11%)	0 0.00%	47 (13.66%)
HSG	71 (25.82%)	2 (16.67%)	1 (1.85%)	0 0.00%	74 (21.51%)
GED	18 (6.55%)	1 (8.33%)	2 (3.70%)	0 0.00%	21 (6.10%)
Others **	6 (2.18%)	1 (8.33%)	2 (3.70%)	0 0.00%	9 (2.62%)
Total	275 (100.00%)	12 (100.00%)	54 (100.00%)	3 (100.00%)	344 (100.00%)

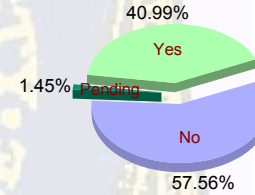


** Includes Aged Out Juveniles and Pending Records

Special Education Services

Yes	114 (41.45%)	5 (41.67%)	20 (37.04%)	2 (66.67%)	141 (40.99%)
No	159 (57.82%)	6 (50.00%)	32 (59.26%)	1 (33.33%)	198 (57.56%)
Pending	2 (0.73%)	1 (8.33%)	2 (3.70%)	0 0.00%	5 (1.45%)
Total	275 (100.00%)	12 (100.00%)	54 (100.00%)	3 (100.00%)	344 (100.00%)

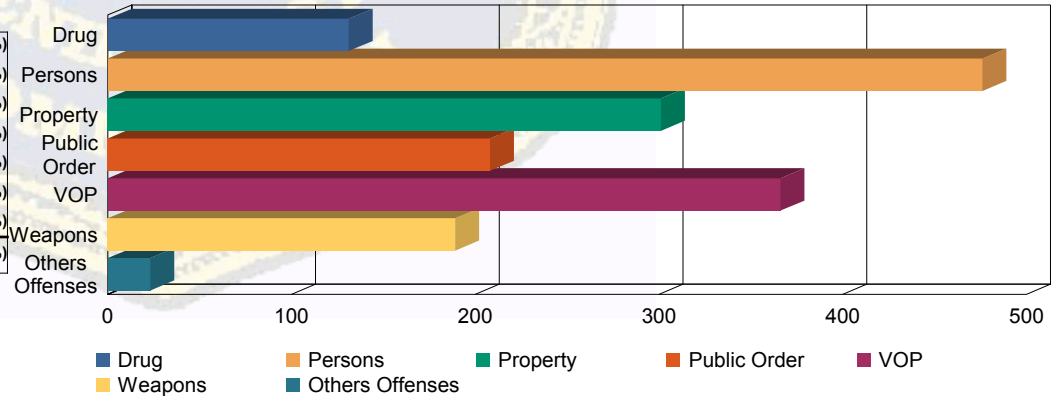
Special Education



Offense Categories

Drug	118 (7.83%)	3 (4.69%)	10 (8.40%)	0 0.00%	131 (7.73%)
Persons	429 (28.47%)	16 (25.00%)	30 (25.21%)	1 (25.00%)	476 (28.10%)
Property	275 (18.25%)	12 (18.75%)	14 (11.76%)	0 0.00%	301 (17.77%)
Public Order	186 (12.34%)	10 (15.63%)	12 (10.08%)	0 0.00%	208 (12.28%)
VOP	308 (20.44%)	15 (23.44%)	40 (33.61%)	3 (75.00%)	366 (21.61%)
Weapons	169 (11.21%)	7 (10.94%)	13 (10.92%)	0 0.00%	189 (11.16%)
Others Offenses	22 (1.46%)	1 (1.56%)	0 0.00%	0 0.00%	23 (1.36%)
Total *	1,507 (100.00%)	64 (100.00%)	119 (100.00%)	4 (100.00%)	1,694 (100.00%)

Offense Categories



* Juveniles may have multiple offenses