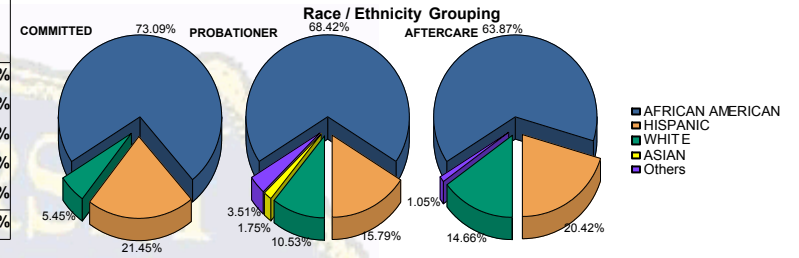


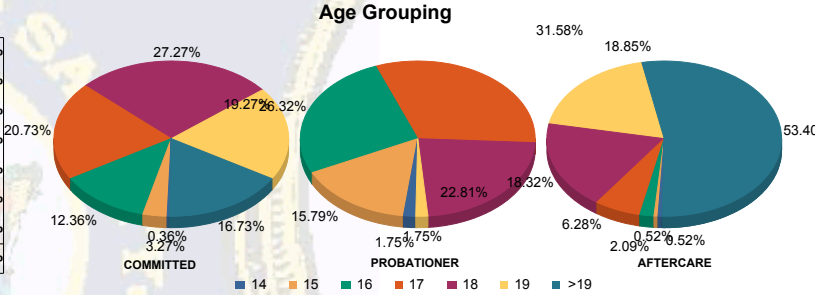


Juvenile Demographics and Statistics

Race/Ethnicity	COMMITTED		PROBATIONER		AFTERCARE		Total							
	MALE	FEMALE	MALE	FEMALE	MALE	FEMALE								
AFRICAN AMERICAN	195	73.86%	6	54.55%	37	68.52%	2	66.67%	114	63.69%	8	66.67%	362	69.22%
HISPANIC	56	21.21%	3	27.27%	8	14.81%	1	33.33%	37	20.67%	2	16.67%	107	20.46%
WHITE	13	4.92%	2	18.18%	6	11.11%	0	0.00%	26	14.53%	2	16.67%	49	9.37%
ASIAN	0	0.00%	0	0.00%	1	1.85%	0	0.00%	0	0.00%	0	0.00%	1	0.19%
Others	0	0.00%	0	0.00%	2	3.70%	0	0.00%	2	1.12%	0	0.00%	4	0.76%
<b>Total</b>	<b>264</b>	<b>100.00%</b>	<b>11</b>	<b>100.00%</b>	<b>54</b>	<b>100.00%</b>	<b>3</b>	<b>100.00%</b>	<b>179</b>	<b>100.00%</b>	<b>12</b>	<b>100.00%</b>	<b>523</b>	<b>100.00%</b>



Age	COMMITTED	PROBATIONER	AFTERCARE	Total
14	1 (0.38%)	0 (0.00%)	1 (1.85%)	3 (0.57%)
15	9 (3.41%)	0 (0.00%)	9 (16.67%)	19 (3.63%)
16	32 (12.12%)	2 (18.18%)	14 (25.93%)	53 (10.13%)
17	54 (20.45%)	3 (27.27%)	16 (29.63%)	87 (16.63%)
18	73 (27.65%)	2 (18.18%)	13 (24.07%)	123 (23.52%)
19	51 (19.32%)	2 (18.18%)	1 (1.85%)	90 (17.21%)
>19	44 (16.67%)	2 (18.18%)	0 (0.00%)	148 (28.30%)
<b>Total</b>	<b>264</b>	<b>11</b>	<b>54</b>	<b>523</b>

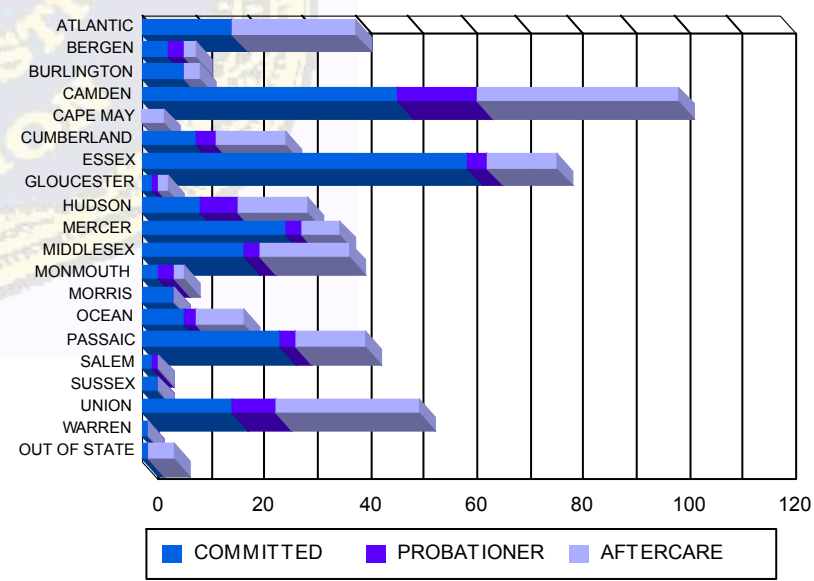


Average Age	COMMITTED	PROBATIONER	AFTERCARE	Total
Average Age	18.13	18.00	16.63	18.71

**Sentencing County**

County	COMMITTED	PROBATIONER	AFTERCARE	Total
ATLANTIC	17 (6.44%)	0 (0.00%)	0 (0.00%)	21 (11.73%)
BERGEN	5 (1.89%)	0 (0.00%)	3 (5.56%)	8 (4.45%)
BURLINGTON	8 (3.03%)	0 (0.00%)	0 (0.00%)	8 (4.45%)
CAMDEN	47 (17.80%)	1 (9.09%)	13 (24.07%)	61 (31.96%)
CAPE MAY	0 (0.00%)	0 (0.00%)	0 (0.00%)	0 (0.00%)
CUMBERLAND	10 (3.79%)	0 (0.00%)	4 (7.41%)	14 (7.20%)
ESSEX	59 (22.35%)	2 (18.18%)	4 (7.41%)	65 (33.94%)
GLOUCESTER	1 (0.38%)	1 (9.09%)	1 (1.85%)	3 (1.55%)
HUDSON	11 (4.17%)	0 (0.00%)	7 (12.96%)	18 (9.41%)
MERCER	24 (9.09%)	3 (27.27%)	3 (5.56%)	30 (15.92%)
MIDDLESEX	18 (6.82%)	1 (9.09%)	3 (5.56%)	22 (11.54%)
MONMOUTH	3 (1.14%)	0 (0.00%)	3 (5.56%)	6 (3.11%)
MORRIS	5 (1.89%)	1 (9.09%)	0 (0.00%)	6 (3.11%)
OCEAN	8 (3.03%)	0 (0.00%)	1 (1.85%)	9 (4.74%)
PASSAIC	25 (9.47%)	1 (9.09%)	3 (5.56%)	29 (15.12%)
SALEM	2 (0.76%)	0 (0.00%)	1 (1.85%)	3 (1.55%)
SUSSEX	2 (0.76%)	1 (9.09%)	0 (0.00%)	3 (1.55%)
UNION	17 (6.44%)	0 (0.00%)	8 (14.81%)	25 (12.92%)
WARREN	1 (0.38%)	0 (0.00%)	0 (0.00%)	1 (0.52%)
OUT OF STATE	1 (0.38%)	0 (0.00%)	0 (0.00%)	1 (0.52%)
<b>Total</b>	<b>264</b>	<b>11</b>	<b>54</b>	<b>523</b>

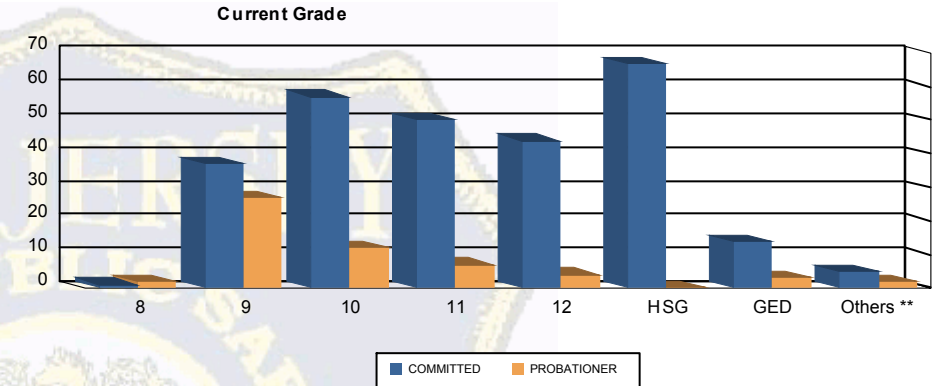
**Count of Juveniles By Sentencing County**





Juvenile Demographics and Statistics

Current Grade	COMMITTED		PROBATIONER		Total
	MALE	FEMALE	MALE	FEMALE	
8	1 (0.38%)	0 0.00%	2 (3.70%)	0 0.00%	3 (0.90%)
9	35 (13.26%)	2 (18.18%)	26 (48.15%)	1 (33.33%)	64 (19.28%)
10	55 (20.83%)	2 (18.18%)	11 (20.37%)	1 (33.33%)	69 (20.78%)
11	48 (18.18%)	2 (18.18%)	6 (11.11%)	1 (33.33%)	57 (17.17%)
12	41 (15.53%)	3 (27.27%)	4 (7.41%)	0 0.00%	48 (14.46%)
HSG	66 (25.00%)	1 (9.09%)	0 0.00%	0 0.00%	67 (20.18%)
GED	13 (4.92%)	1 (9.09%)	3 (5.56%)	0 0.00%	17 (5.12%)
Others **	5 (1.89%)	0 0.00%	2 (3.70%)	0 0.00%	7 (2.11%)
<b>Total</b>	<b>264 (100.00%)</b>	<b>11 (100.00%)</b>	<b>54 (100.00%)</b>	<b>3 (100.00%)</b>	<b>332 (100.00%)</b>

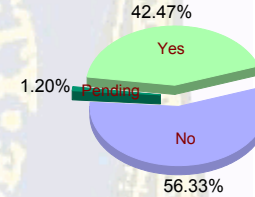


\*\* Includes Aged Out Juveniles and Pending Records

Special Education Services

Yes	110 (41.67%)	5 (45.45%)	24 (44.44%)	2 (66.67%)	141 (42.47%)
No	152 (57.58%)	6 (54.55%)	28 (51.85%)	1 (33.33%)	187 (56.33%)
Pending	2 (0.76%)	0 0.00%	2 (3.70%)	0 0.00%	4 (1.20%)
<b>Total</b>	<b>264 (100.00%)</b>	<b>11 (100.00%)</b>	<b>54 (100.00%)</b>	<b>3 (100.00%)</b>	<b>332 (100.00%)</b>

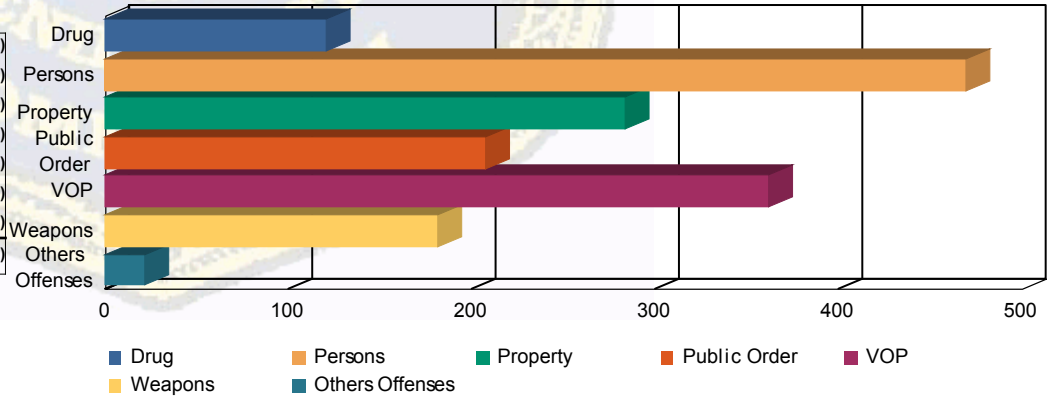
Special Education



Offense Categories

Drug	107 (7.40%)	4 (5.97%)	9 (7.20%)	0 0.00%	120 (7.30%)
Persons	421 (29.13%)	16 (23.88%)	31 (24.80%)	1 (16.67%)	469 (28.55%)
Property	259 (17.92%)	13 (19.40%)	11 (8.80%)	0 0.00%	283 (17.22%)
Public Order	182 (12.60%)	10 (14.93%)	14 (11.20%)	1 (16.67%)	207 (12.60%)
VOP	295 (20.42%)	16 (23.88%)	47 (37.60%)	4 (66.67%)	362 (22.03%)
Weapons	161 (11.14%)	7 (10.45%)	13 (10.40%)	0 0.00%	181 (11.02%)
Others Offenses	20 (1.38%)	1 (1.49%)	0 0.00%	0 0.00%	21 (1.28%)
<b>Total *</b>	<b>1,445 (100.00%)</b>	<b>67 (100.00%)</b>	<b>125 (100.00%)</b>	<b>6 (100.00%)</b>	<b>1,643 (100.00%)</b>

Offense Categories



\* Juveniles may have multiple offenses