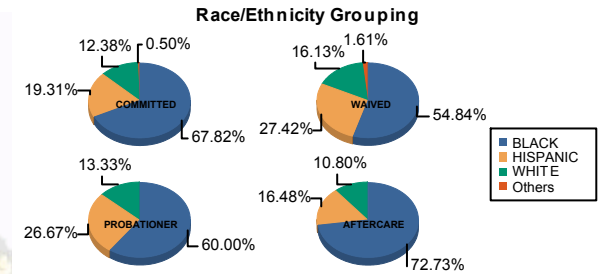




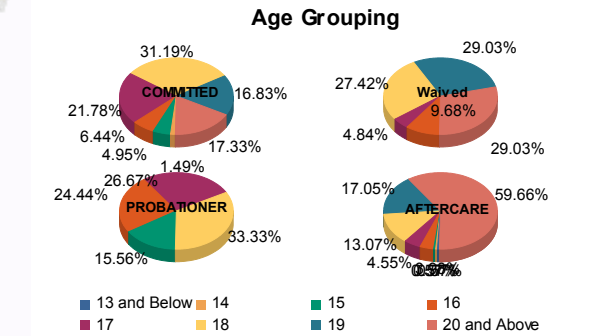
Juvenile Demographics and Statistics

Race/ Ethnicity	COMMITTED				WAIVED				PROBATIONER				AFTERCARE				Total	
	MALE	FEMALE	MALE	FEMALE	MALE	FEMALE	MALE	FEMALE	MALE	FEMALE	MALE	FEMALE	MALE	FEMALE				
BLACK	127	68.65%	10	58.82%	33	54.10%	1	100.00%	26	59.09%	1	100.00%	126	73.68%	2	40.00%	326	67.22%
HISPANIC	38	20.54%	1	5.88%	17	27.87%	0	0.00%	12	27.27%	0	0.00%	28	16.37%	1	20.00%	97	20.00%
WHITE	19	10.27%	6	35.29%	10	16.39%	0	0.00%	6	13.64%	0	0.00%	17	9.94%	2	40.00%	60	12.37%
Others	1	0.54%	0	0.00%	1	1.64%	0	0.00%	0	0.00%	0	0.00%	0	0.00%	0	0.00%	2	0.41%
Total	185	100.00%	17	100.00%	61	100.00%	1	100.00%	44	100.00%	1	100.00%	171	100.00%	5	100.00%	485	100.00%



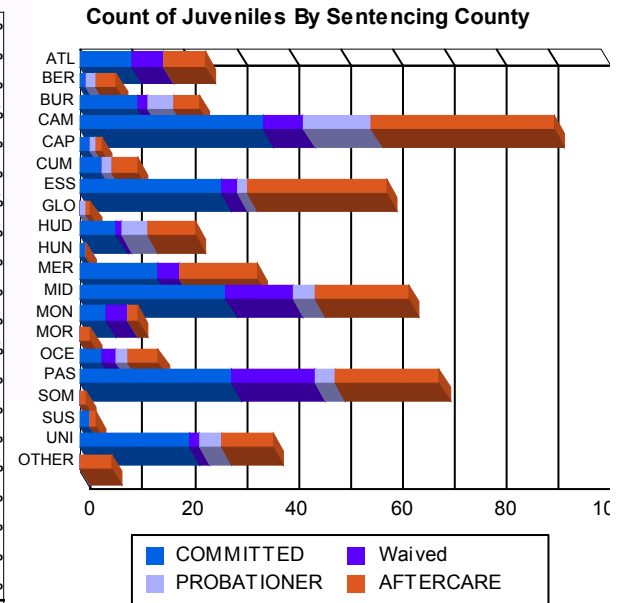
Age

Age Group	MALE	FEMALE	MALE	FEMALE	MALE	FEMALE	MALE	FEMALE	MALE	FEMALE	MALE	FEMALE	MALE	FEMALE	Total	Percentage		
13 and Below	0	0.00%	0	0.00%	0	0.00%	0	0.00%	0	0.00%	0	0.00%	1	0.58%	0	0.00%	1	0.21%
14	2	1.08%	1	5.88%	0	0.00%	0	0.00%	0	0.00%	0	0.00%	1	0.58%	0	0.00%	4	0.82%
15	9	4.86%	1	5.88%	0	0.00%	0	0.00%	7	15.91%	0	0.00%	1	0.58%	0	0.00%	18	3.71%
16	13	7.03%	0	0.00%	6	9.84%	0	0.00%	11	25.00%	0	0.00%	6	3.51%	1	20.00%	37	7.63%
17	38	20.54%	6	35.29%	3	4.92%	0	0.00%	11	25.00%	1	100.00%	8	4.68%	0	0.00%	67	13.81%
18	60	32.43%	3	17.65%	17	27.87%	0	0.00%	15	34.09%	0	0.00%	23	13.45%	0	0.00%	118	24.33%
19	34	18.38%	0	0.00%	17	27.87%	1	100.00%	0	0.00%	0	0.00%	30	17.54%	0	0.00%	82	16.91%
20 and Above	29	15.68%	6	35.29%	18	29.51%	0	0.00%	0	0.00%	0	0.00%	101	59.06%	4	80.00%	158	32.58%
Total	185	100.00%	17	100.00%	61	100.00%	1	100.00%	44	100.00%	1	100.00%	171	100.00%	5	100.00%	485	100.00%
Average Age	18.10		18.00		18.75		19.00		16.77		17.00		20.19		21.80		18.83	



Sentencing County

County	MALE	FEMALE	MALE	FEMALE	MALE	FEMALE	MALE	FEMALE	MALE	FEMALE	MALE	FEMALE	MALE	FEMALE	Total	Percentage		
ATL	10	5.41%	0	0.00%	6	9.84%	0	0.00%	0	0.00%	0	0.00%	7	4.09%	1	20.00%	24	4.95%
BER	1	0.54%	0	0.00%	0	0.00%	0	0.00%	2	4.55%	0	0.00%	4	2.34%	0	0.00%	7	1.44%
BUR	9	4.86%	2	11.76%	2	3.28%	0	0.00%	5	11.36%	0	0.00%	5	2.92%	0	0.00%	23	4.74%
CAM	33	17.84%	2	11.76%	7	11.48%	1	100.00%	13	29.55%	0	0.00%	35	20.47%	0	0.00%	91	18.76%
CAP	2	1.08%	0	0.00%	0	0.00%	0	0.00%	1	2.27%	0	0.00%	1	0.58%	0	0.00%	4	0.82%
CUM	3	1.62%	1	5.88%	0	0.00%	0	0.00%	2	4.55%	0	0.00%	5	2.92%	0	0.00%	11	2.27%
ESS	27	14.59%	0	0.00%	3	4.92%	0	0.00%	2	4.55%	0	0.00%	26	15.20%	1	20.00%	59	12.16%
GLO	0	0.00%	0	0.00%	0	0.00%	0	0.00%	1	2.27%	0	0.00%	1	0.58%	0	0.00%	2	0.41%
HUD	7	3.78%	0	0.00%	1	1.64%	0	0.00%	5	11.36%	0	0.00%	9	5.26%	0	0.00%	22	4.54%
HUN	1	0.54%	0	0.00%	0	0.00%	0	0.00%	0	0.00%	0	0.00%	0	0.00%	0	0.00%	1	0.21%
MER	14	7.57%	1	5.88%	4	6.56%	0	0.00%	0	0.00%	0	0.00%	14	8.19%	1	20.00%	34	7.01%
MID	24	12.97%	4	23.53%	13	21.31%	0	0.00%	3	6.82%	1	100.00%	18	10.53%	0	0.00%	63	12.99%
MON	5	2.70%	0	0.00%	4	6.56%	0	0.00%	0	0.00%	0	0.00%	2	1.17%	0	0.00%	11	2.27%
MOR	0	0.00%	0	0.00%	0	0.00%	0	0.00%	0	0.00%	0	0.00%	2	1.17%	0	0.00%	2	0.41%
OCE	4	2.16%	0	0.00%	3	4.92%	0	0.00%	2	4.55%	0	0.00%	6	3.51%	0	0.00%	15	3.09%
PAS	25	13.51%	4	23.53%	16	26.23%	0	0.00%	4	9.09%	0	0.00%	19	11.11%	1	20.00%	69	14.23%
SOM	0	0.00%	0	0.00%	0	0.00%	0	0.00%	0	0.00%	0	0.00%	1	0.58%	0	0.00%	1	0.21%
SUS	1	0.54%	1	5.88%	0	0.00%	0	0.00%	0	0.00%	0	0.00%	1	0.58%	0	0.00%	3	0.62%
UNI	19	10.27%	2	11.76%	2	3.28%	0	0.00%	4	9.09%	0	0.00%	9	5.26%	1	20.00%	37	7.63%
OTHER	0	0.00%	0	0.00%	0	0.00%	0	0.00%	0	0.00%	0	0.00%	6	3.51%	0	0.00%	6	1.24%
Total	185	100.00%	17	100.00%	61	100.00%	1	100.00%	44	100.00%	1	100.00%	171	100.00%	5	100.00%	485	100.00%





Juvenile Demographics and Statistics

Current Grade	COMMITTED		WAIVED		PROBATIONER		Total
	MALE	FEMALE	MALE	FEMALE	MALE	FEMALE	
7	1 (0.54%)	1 (5.88%)	0 0.00%	0 0.00%	0 0.00%	0 0.00%	2 (0.65%)
8	2 (1.08%)	0 0.00%	0 0.00%	0 0.00%	1 (2.27%)	0 0.00%	3 (0.97%)
9	13 (7.03%)	5 (29.41%)	2 (3.28%)	0 0.00%	12 (27.27%)	0 0.00%	32 (10.36%)
10	30 (16.22%)	2 (11.76%)	8 (13.11%)	0 0.00%	11 (25.00%)	0 0.00%	51 (16.50%)
11	32 (17.30%)	2 (11.76%)	11 (18.03%)	0 0.00%	7 (15.91%)	0 0.00%	52 (16.83%)
12	27 (14.59%)	1 (5.88%)	12 (19.67%)	0 0.00%	6 (13.64%)	1 (100.00%)	47 (15.21%)
HSG	57 (30.81%)	5 (29.41%)	27 (44.26%)	1 (100.00%)	5 (11.36%)	0 0.00%	95 (30.74%)
GED	5 (2.70%)	0 0.00%	1 (1.64%)	0 0.00%	0 0.00%	0 0.00%	6 (1.94%)
Others **	18 (9.73%)	1 (5.88%)	0 0.00%	0 0.00%	2 (4.55%)	0 0.00%	21 (6.80%)
Total	185 (100.00%)	17 (100.00%)	61 (100.00%)	1 (100.00%)	44 (100.00%)	1 (100.00%)	309 (100.00%)

** Includes Aged Out Juveniles and Pending Records

Special Education Services

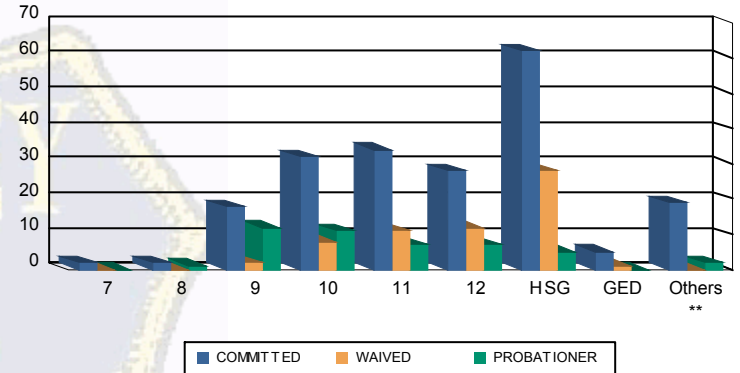
Yes	86 (46.49%)	6 (35.29%)	31 (50.82%)	1 (100.00%)	26 (59.09%)	0 0.00%	150 (48.54%)
No	90 (48.65%)	11 (64.71%)	30 (49.18%)	0 0.00%	16 (36.36%)	1 (100.00%)	148 (47.90%)
Pending	9 (4.86%)	0 0.00%	0 0.00%	0 0.00%	2 (4.55%)	0 0.00%	11 (3.56%)
Total	185 (100.00%)	17 (100.00%)	61 (100.00%)	1 (100.00%)	44 (100.00%)	1 (100.00%)	309 (100.00%)

Offense Categories

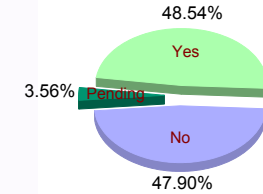
Drug	108 (8.84%)	6 (9.09%)	5 (4.72%)	0 0.00%	13 (11.61%)	0 0.00%	132 (8.75%)
Persons	343 (28.07%)	15 (22.73%)	62 (58.49%)	1 (100.00%)	30 (26.79%)	1 (50.00%)	452 (29.95%)
Property	205 (16.78%)	12 (18.18%)	6 (5.66%)	0 0.00%	17 (15.18%)	0 0.00%	240 (15.90%)
Public Order	163 (13.34%)	13 (19.70%)	8 (7.55%)	0 0.00%	14 (12.50%)	0 0.00%	198 (13.12%)
VOP	247 (20.21%)	13 (19.70%)	6 (5.66%)	0 0.00%	28 (25.00%)	1 (50.00%)	295 (19.55%)
Weapons	144 (11.78%)	7 (10.61%)	19 (17.92%)	0 0.00%	7 (6.25%)	0 0.00%	177 (11.73%)
Others Offenses	12 (0.98%)	0 0.00%	0 0.00%	0 0.00%	3 (2.68%)	0 0.00%	15 (0.99%)
Total *	1,222 (100.00%)	66 (100.00%)	106 (100.00%)	1 (100.00%)	112 (100.00%)	2 (100.00%)	1,509 (100.00%)

* Juveniles may have multiple offenses

Current Grade



Special Education



Offense Categories

