



Juvenile Demographics and Statistics

Race/ Ethnicity	COMMITTED		WAIVED		PROBATIONER		AFTERCARE		Total									
	MALE	FEMALE	MALE	FEMALE	MALE	FEMALE	MALE	FEMALE										
BLACK	130	68.06%	9	56.25%	36	57.14%	1	100.00%	28	60.87%	1	100.00%	120	73.62%	3	50.00%	328	67.35%
HISPANIC	41	21.47%	1	6.25%	18	28.57%	0	0.00%	13	28.26%	0	0.00%	27	16.56%	1	16.67%	101	20.74%
WHITE	19	9.95%	6	37.50%	8	12.70%	0	0.00%	5	10.87%	0	0.00%	16	9.82%	2	33.33%	56	11.50%
Others	1	0.52%	0	0.00%	1	1.59%	0	0.00%	0	0.00%	0	0.00%	0	0.00%	0	0.00%	2	0.41%
Total	191	100.00%	16	100.00%	63	100.00%	1	100.00%	46	100.00%	1	100.00%	163	100.00%	6	100.00%	487	100.00%

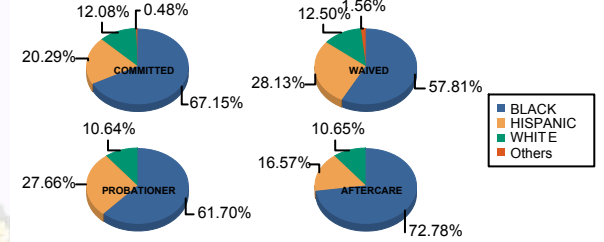
Age

13 and Below	0	0.00%	0	0.00%	0	0.00%	0	0.00%	0	0.00%	0	0.00%	1	0.61%	0	0.00%	1	0.21%
14	1	0.52%	1	6.25%	0	0.00%	0	0.00%	1	2.17%	0	0.00%	1	0.61%	0	0.00%	4	0.82%
15	10	5.24%	1	6.25%	0	0.00%	0	0.00%	6	13.04%	0	0.00%	1	0.61%	0	0.00%	18	3.70%
16	16	8.38%	0	0.00%	4	6.35%	0	0.00%	14	30.43%	0	0.00%	4	2.45%	1	16.67%	39	8.01%
17	38	19.90%	6	37.50%	5	7.94%	0	0.00%	10	21.74%	1	100.00%	7	4.29%	0	0.00%	67	13.76%
18	58	30.37%	2	12.50%	17	26.98%	0	0.00%	15	32.61%	0	0.00%	19	11.66%	1	16.67%	112	23.00%
19	38	19.90%	0	0.00%	17	26.98%	1	100.00%	0	0.00%	0	0.00%	33	20.25%	0	0.00%	89	18.28%
20 and Above	30	15.71%	6	37.50%	20	31.75%	0	0.00%	0	0.00%	0	0.00%	97	59.51%	4	66.67%	157	32.24%
Total	191	100.00%	16	100.00%	63	100.00%	1	100.00%	46	100.00%	1	100.00%	163	100.00%	6	100.00%	487	100.00%
Average Age	18.10		18.13		18.84		19.00		16.70		17.00		20.29		20.83		18.83	

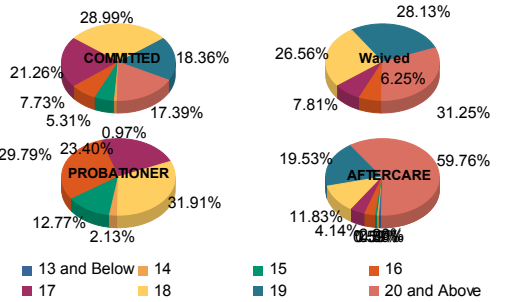
Sentencing County

ATL	12	6.28%	0	0.00%	6	9.52%	0	0.00%	0	0.00%	0	0.00%	6	3.68%	1	16.67%	25	5.13%
BER	1	0.52%	0	0.00%	0	0.00%	0	0.00%	1	2.17%	0	0.00%	3	1.84%	0	0.00%	5	1.03%
BUR	8	4.19%	2	12.50%	1	1.59%	0	0.00%	5	10.87%	0	0.00%	6	3.68%	0	0.00%	22	4.52%
CAM	34	17.80%	1	6.25%	7	11.11%	1	100.00%	16	34.78%	0	0.00%	31	19.02%	1	16.67%	91	18.69%
CAP	2	1.05%	0	0.00%	0	0.00%	0	0.00%	1	2.17%	0	0.00%	1	0.61%	0	0.00%	4	0.82%
CUM	4	2.09%	1	6.25%	1	1.59%	0	0.00%	2	4.35%	0	0.00%	5	3.07%	0	0.00%	13	2.67%
ESS	26	13.61%	1	6.25%	3	4.76%	0	0.00%	2	4.35%	0	0.00%	27	16.56%	0	0.00%	59	12.11%
GLO	0	0.00%	0	0.00%	0	0.00%	0	0.00%	1	2.17%	0	0.00%	1	0.61%	0	0.00%	2	0.41%
HUD	7	3.66%	0	0.00%	3	4.76%	0	0.00%	5	10.87%	0	0.00%	10	6.13%	0	0.00%	25	5.13%
HUN	1	0.52%	0	0.00%	0	0.00%	0	0.00%	0	0.00%	0	0.00%	0	0.00%	0	0.00%	1	0.21%
MER	18	9.42%	1	6.25%	4	6.35%	0	0.00%	0	0.00%	0	0.00%	11	6.75%	1	16.67%	35	7.19%
MID	24	12.57%	4	25.00%	13	20.63%	0	0.00%	3	6.52%	1	100.00%	18	11.04%	0	0.00%	63	12.94%
MON	5	2.62%	0	0.00%	4	6.35%	0	0.00%	0	0.00%	0	0.00%	2	1.23%	0	0.00%	11	2.26%
MOR	0	0.00%	0	0.00%	0	0.00%	0	0.00%	0	0.00%	0	0.00%	2	1.23%	0	0.00%	2	0.41%
OCE	4	2.09%	0	0.00%	3	4.76%	0	0.00%	2	4.35%	0	0.00%	6	3.68%	0	0.00%	15	3.08%
PAS	25	13.09%	3	18.75%	16	25.40%	0	0.00%	4	8.70%	0	0.00%	17	10.43%	2	33.33%	67	13.76%
SOM	0	0.00%	0	0.00%	0	0.00%	0	0.00%	0	0.00%	0	0.00%	1	0.61%	0	0.00%	1	0.21%
SUS	1	0.52%	1	6.25%	0	0.00%	0	0.00%	0	0.00%	0	0.00%	1	0.61%	0	0.00%	3	0.62%
UNI	19	9.95%	2	12.50%	2	3.17%	0	0.00%	4	8.70%	0	0.00%	9	5.52%	1	16.67%	37	7.60%
OTHER	0	0.00%	0	0.00%	0	0.00%	0	0.00%	0	0.00%	0	0.00%	6	3.68%	0	0.00%	6	1.23%
Total	191	100.00%	16	100.00%	63	100.00%	1	100.00%	46	100.00%	1	100.00%	163	100.00%	6	100.00%	487	100.00%

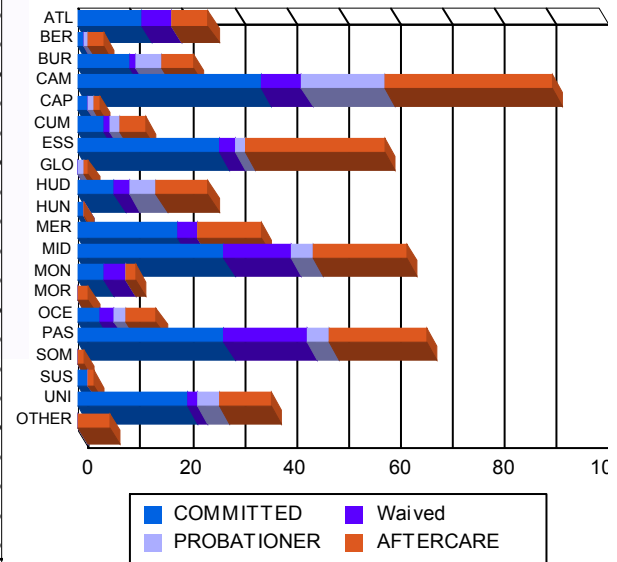
Race/Ethnicity Grouping



Age Grouping



Count of Juveniles By Sentencing County





Juvenile Demographics and Statistics

Current Grade	COMMITTED		WAIVED		PROBATIONER		Total
	MALE	FEMALE	MALE	FEMALE	MALE	FEMALE	
7	2 (1.05%)	1 (6.25%)	0 (0.00%)	0 (0.00%)	0 (0.00%)	0 (0.00%)	3 (0.94%)
8	3 (1.57%)	0 (0.00%)	0 (0.00%)	0 (0.00%)	2 (4.35%)	0 (0.00%)	5 (1.57%)
9	15 (7.85%)	5 (31.25%)	2 (3.17%)	0 (0.00%)	15 (32.61%)	0 (0.00%)	37 (11.64%)
10	31 (16.23%)	1 (6.25%)	6 (9.52%)	0 (0.00%)	8 (17.39%)	0 (0.00%)	46 (14.47%)
11	31 (16.23%)	2 (12.50%)	15 (23.81%)	0 (0.00%)	10 (21.74%)	0 (0.00%)	58 (18.24%)
12	31 (16.23%)	1 (6.25%)	11 (17.46%)	0 (0.00%)	8 (17.39%)	1 (100.00%)	52 (16.35%)
HSG	59 (30.89%)	5 (31.25%)	28 (44.44%)	1 (100.00%)	3 (6.52%)	0 (0.00%)	96 (30.19%)
GED	4 (2.09%)	0 (0.00%)	1 (1.59%)	0 (0.00%)	0 (0.00%)	0 (0.00%)	5 (1.57%)
Others **	15 (7.85%)	1 (6.25%)	0 (0.00%)	0 (0.00%)	0 (0.00%)	0 (0.00%)	16 (5.03%)
Total	191 (100.00%)	16 (100.00%)	63 (100.00%)	1 (100.00%)	46 (100.00%)	1 (100.00%)	318 (100.00%)

** Includes Aged Out Juveniles and Pending Records

Special Education Services

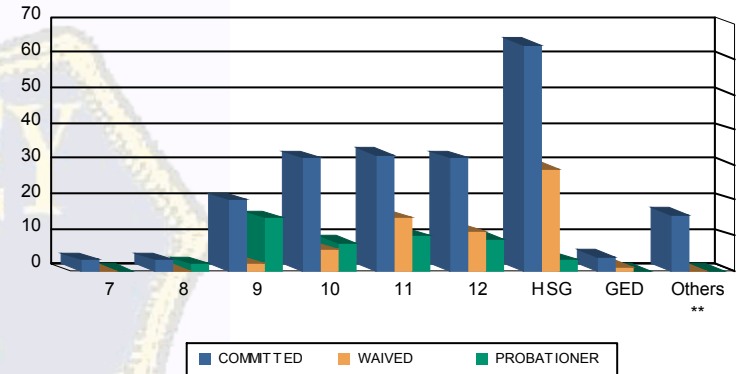
Yes	93 (48.69%)	5 (31.25%)	30 (47.62%)	1 (100.00%)	25 (54.35%)	0 (0.00%)	154 (48.43%)
No	94 (49.21%)	11 (68.75%)	33 (52.38%)	0 (0.00%)	21 (45.65%)	1 (100.00%)	160 (50.31%)
Pending	4 (2.09%)	0 (0.00%)	0 (0.00%)	0 (0.00%)	0 (0.00%)	0 (0.00%)	4 (1.26%)
Total	191 (100.00%)	16 (100.00%)	63 (100.00%)	1 (100.00%)	46 (100.00%)	1 (100.00%)	318 (100.00%)

Offense Categories

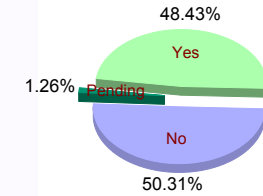
Drug	107 (8.71%)	6 (9.09%)	6 (5.36%)	0 (0.00%)	14 (12.73%)	0 (0.00%)	133 (8.75%)
Persons	347 (28.23%)	15 (22.73%)	63 (56.25%)	1 (100.00%)	28 (25.45%)	1 (50.00%)	455 (29.93%)
Property	209 (17.01%)	12 (18.18%)	8 (7.14%)	0 (0.00%)	16 (14.55%)	0 (0.00%)	245 (16.12%)
Public Order	169 (13.75%)	13 (19.70%)	8 (7.14%)	0 (0.00%)	14 (12.73%)	0 (0.00%)	204 (13.42%)
VOP	246 (20.02%)	13 (19.70%)	9 (8.04%)	0 (0.00%)	28 (25.45%)	1 (50.00%)	297 (19.54%)
Weapons	142 (11.55%)	7 (10.61%)	18 (16.07%)	0 (0.00%)	7 (6.36%)	0 (0.00%)	174 (11.45%)
Others Offenses	9 (0.73%)	0 (0.00%)	0 (0.00%)	0 (0.00%)	3 (2.73%)	0 (0.00%)	12 (0.79%)
Total *	1,229 (100.00%)	66 (100.00%)	112 (100.00%)	1 (100.00%)	110 (100.00%)	2 (100.00%)	1,520 (100.00%)

* Juveniles may have multiple offenses

Current Grade



Special Education



Offense Categories

