



State of New Jersey
DEPARTMENT OF MILITARY AND VETERANS AFFAIRS
POST OFFICE BOX 340
TRENTON, NEW JERSEY 08625-0340

CHRIS CHRISTIE
Governor
Commander-in-Chief

☆
MICHAEL L. CUNNIFF
Brigadier General
The Adjutant General

DEPARTMENTAL BULLETIN NO. 7

10 October 2012

SYSTEMS ADMIN, NETWORK & SECURITY INSTITUTE (SANS) SECURING THE HUMAN - COMPUTER TRAINING VIA THE LEARNING MANAGEMENT SYSTEM

1. **APPLICABILITY:** This Bulletin applies to all DMAVA employees and contracted staff within the New Jersey Department of Military and Veterans Affairs (DMAVA) that utilize the DMAVA /Garden State Network (GSN) as computer users.
2. **PURPOSE:** To familiarize and train all DMAVA state network computer users in fundamental information security best practices. The goal is to introduce and educate employees about information and cyber security threats in today's world and apply that knowledge to electronic devices, passwords, and communications for everyday experiences in the workplace and at home.
3. **PROCESS:** The "SANS Securing the Human" computer security training will be conducted via the on-line Learning Management System (LMS).
 - a. LMS is a web-based application that meets three primary functions:
 - Provides access to learning content, such as online training and policy documents.
 - Provides the ability to administer and track training.
 - Provides the ability to create reports on training activity.
 - b. This online course is designed for students to gain skills that will help them to understand, recognize, prevent, computer and information security breaches related to the theft or release of personal or sensitive information.
 - c. The training modules consist of information security awareness videos and a short quiz to test employees' knowledge at the end of each section. The training takes approximately 90 minutes to complete. The subject content includes but is not limited to: password protection, encryption, data protection, health protection, credit card protection, social engineering and networking, and other security areas.
 - d. The courses offered can be taken without additional charges to the Department or student. (See enclosed attachment for instructions on accessing the course).

e. The on-line training course will be mass assigned in the Learning Management System (LMS) by members of the Information and Administrative Services Division. All DMAVA staff with existing network computer user accounts will receive email notification of their course enrollment.

4. **KEY DATES:** The training shall be completed no later than 15 December 2012 for current employees or within three months of hire for new employees. Employees that require an authorization key for an LMS account on the My NJ Portal should contact Mrs. Loreta Sepulveda (HRD) at (609) 530-6885 or loreta.sepulveda@njdmava.state.nj.us.

5. **COMPUTER REQUIREMENTS:** The training is authorized to be taken on all State computer systems and is also accessible from any home PC with Internet connection and appropriate browser version and required software applications and settings as identified below.

a. **System Requirements**

SumTotal’s *Maestro* learning management system is an Internet-based tool that only requires a connection to the Internet and access to a web browser to gain access to the application. Users access *Maestro* on a variety of client computing platforms, devices, web browsers and varying levels of Internet bandwidth. The following provides minimum and recommended guidelines for client devices accessing the *Maestro* system. The following are the minimum system configuration recommendations for running SumTotal’s *Maestro* learning management system. These recommendations are intended to assist you in determining optimal system configurations for your computer.

The *Maestro* Learning Management System supports the following browsers:

Browser	Comments
Internet Explorer 6 and higher	SumTotal supports SP2 and SP3 for IE 6.
Firefox 2.0.10 and higher	
Google Chrome	SumTotal supports non-beta versions only. Chrome will update itself with stable, non-beta versions.
Apple Safari version 3.2 and higher	


b. **Recommendations**

- **A high-speed Internet connection** will ensure the best user experience especially if you are working with online courseware, video streaming or large files.
- For authentication purposes and bookmarking online courses, the **browser's cookies and scripting** must be enabled.
- **Pop-up blockers** should be deactivated when launching online courses.
- **Firewall programs** may need to be temporarily disabled if learners are experiencing issues launching or tracking online courses.
- **Third-party toolbars** may need to be temporarily disabled if learners are experiencing issues launching or tracking online courses.

- To help with the overall performance of the LMS and courses, <https://gm1.geolearning.com/> should be added as a trusted site.
- *Maestro* is designed to function with SVGA monitor with **display settings** at a minimum of 800 x 600 pixels. Recommended resolution settings are 1024 x 768 pixels.

c. Browser Support and Configuration

- **Internet Explorer (IE) 6** is known to work with Java 1.4 through Java 5 update 11 or Java 6 update 7
 - Vendor based courseware such as Skillsoft have been tested with the Java versions listed above and they do work properly.
 - IE6 with Java 5 update 12 to Java 6 update 7 may not work properly with custom courses created through authoring tools such as Articulate and Lectora in certain instances. This is due to an issue between Microsoft and Java Sun.
 - URL for 5 update 11: https://cds.sun.com/is-bin/INTERSHOP.enfinity/WFS/CDS-CDS_Developer-Site/en_US/-/USD/ViewProductDetail-Start?ProductRef=jre-1.5.0_11-oth-JPR@CDS-CDS_Developer
 - IE 7 can use any Java but 5 update 11 or newer is recommended.
- **Firefox** can use any version of Java, however Java Version 5 Update 11 or newer is recommended.

•  **Warning!** The LMS supports FireFox but courseware might not function as it does in IE. You will want to test your courses in FireFox prior to releasing the courses to your end users.

- **AOL Web Browser Connection:** make sure the Learner is using Internet Explorer to launch the courseware independent of AOL. Cookies and Scripting: should be enabled on the learner's workstation in order to allow bookmarking of courseware.

d. Java

Report Analytics operates using Java, and will work in any Java 1.5 or 1.6 environment. Some courses require Java. The specific version of Java will depend on the course, how it was designed or what authoring tool was used. Refer to the courseware vendor or software manufacturer for details.

- The Microsoft JVM reached its end-of-life on December 31, 2007 and is not supported.
- We recommend you use the latest supported version of Java.
- For courses authored in SCORM or AICC API, Java 1.4 or higher is required.
 - Depending on the course and how it was created, a higher version of Java may be required.

- o Some vendors or authoring tools may require a specific version of Java to pass the course information back to the LMS.

If third-party software and modules are post-End-of-Life by their vendor/developer, SumTotal will not support the configuration.

e. **Flash** -There are certain components of the system that utilize Flash for presentation. These include some of the dashboards and upload progress bars. For full functionality using the application's organizational charts and instructional videos, the Macromedia Flash plug-in is needed but it is not required to operate the system.

f. **Adobe Acrobat** -Adobe Acrobat Reader should be installed if trying to access course completion certificates or approval forms.

6. **LMS ACCESS:** To access the LMS training you must have a MyNewJersey portal account and establish an HRDI e-Learning Solution link on your portal account. If you need assistance with configuration on a state owned computer issued or maintained by the department please contact your local facility IT help desk support staff for assistance before making any changes to your workstation.

If you require additional information for computer set-up on a non-state owned computer the following web link contains the on-line instructions from the MyNewJersey portal and HRDI e-learning Solution internet site http://services.geolearning.com/Help/en-US/Global/Content/Learning_Center_Basics/System_Requirements.htm The above settings and software configurations are only suggestions for best practice in the LMS.

a. If you encounter computer problems with your Flash Player, Internet Explorer browser or Adobe Acrobat version which interferes with completing this training on a department owned computer, please contact your local Information Technology Help Desk at one of the following number below.

All field offices located outside of the Lawrenceville headquarters and/or the Veterans Memorial Homes should contact the Central Operations IASD Help Desk for IT support request.

- Menlo Park Help Desk –732-452-4204
- Paramus Help Desk – 201-634-8537
- Vineland Help Desk – 856-405-4311
- Central Operations – (609) 530-7177

OFFICIAL:



DAVID S. SNEDEKER
Chief Information Officer
Director, Information and
Administrative Services Division

MICHAEL L. CUNNIFF
Brigadier General, NJANG
The Adjutant General

DISTRIBUTION: A, D, E, F

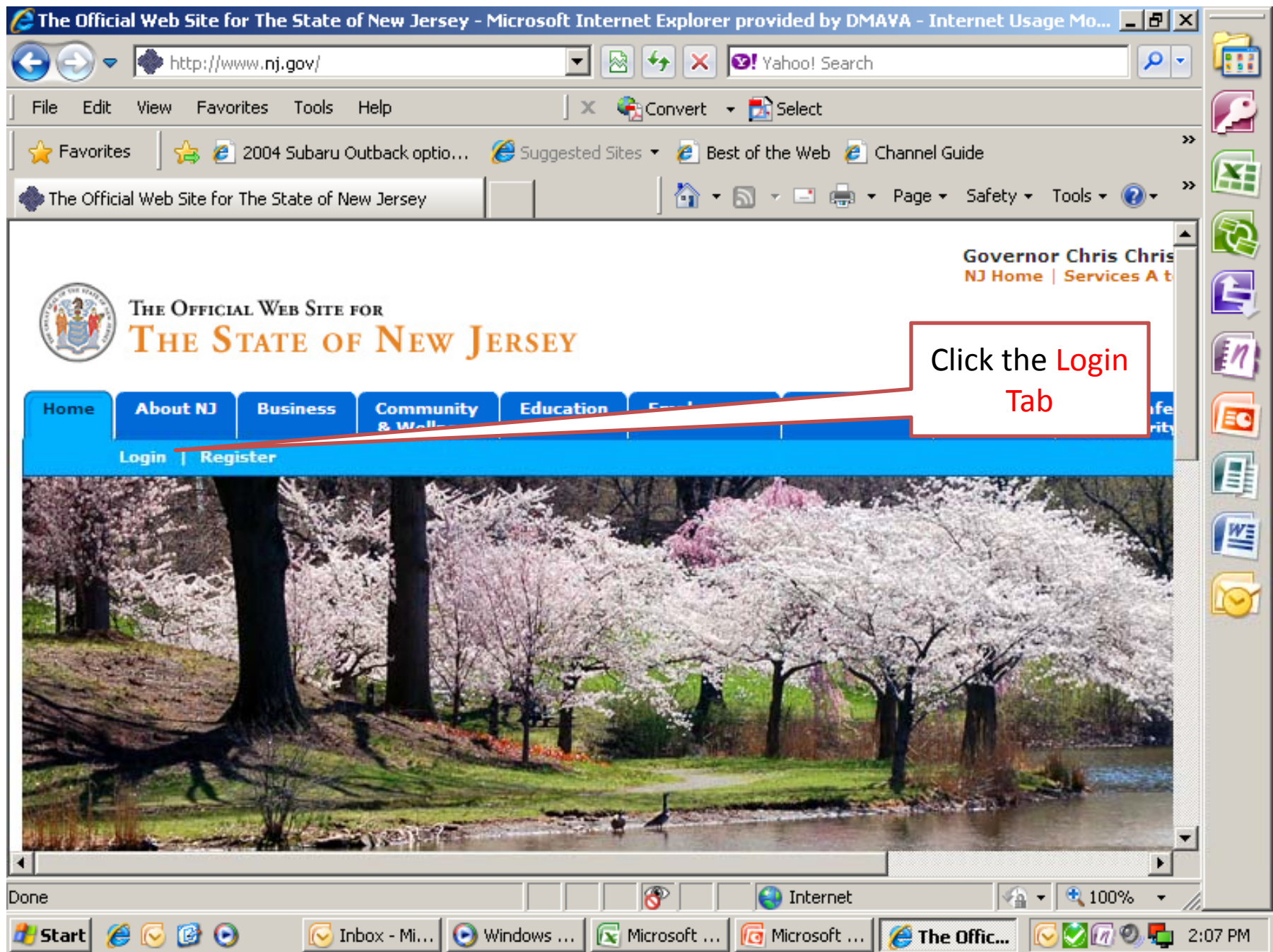
Encl:

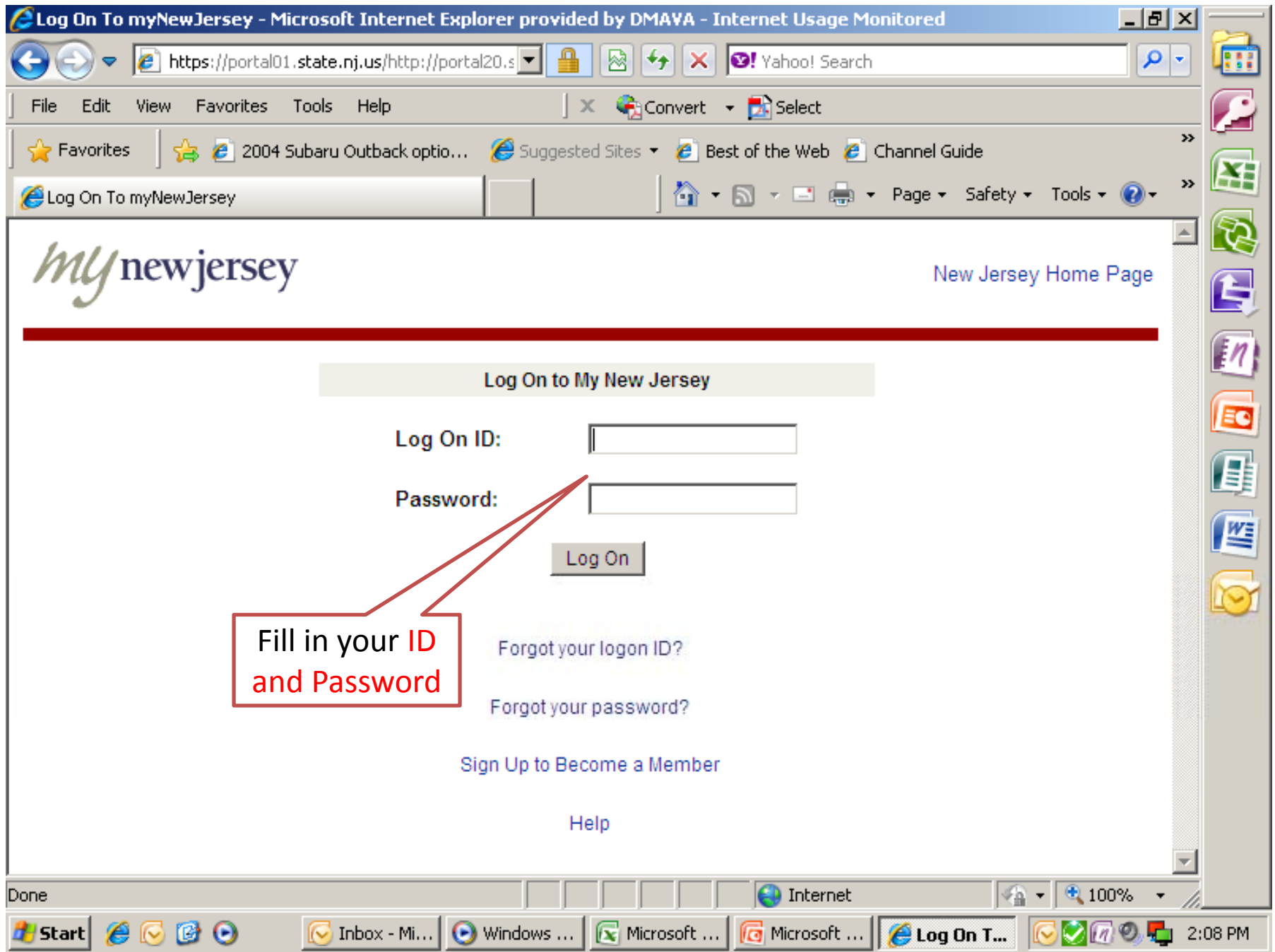
1. Accessing SANS Securing the Human Course via LMS Presentation

State Mandatory Course via LMS

Follow this power point presentation
on how to select and take the LMS On
Line Training (OLT) course

SANS Securing the Human - Computer Security Training





State of New Jersey - Microsoft Internet Explorer provided by DMAVA - Internet Usage Monitored

https://portal01.state.nj.us/http://portal20.s

File Edit View Favorites Tools Help

State of New Jersey

THE OFFICIAL WEB SITE FOR
THE STATE OF NEW JERSEY

Services A to Z | Departments/Agencies | FAQs

myNJ Home myNJ Business myNewJersey

Welcome paul serdiuk [logout](#) | [change profile](#) | [enter authorization code](#) | [choose start page](#) | [content](#) | [layout](#) | [help](#)

Treasury Links

Office of Workforce Initiatives and Development

[HRDI eLearning](#)

New Jersey Events

Travel Guide

myNJ.earthWatch

View NWS weather for: 08625

Air Quality: Central Delaware Valley

Current: Good Forecast: n/a

OPRA Open Public Records Act

Contact Us | Privacy Policy | Accessibility Statement

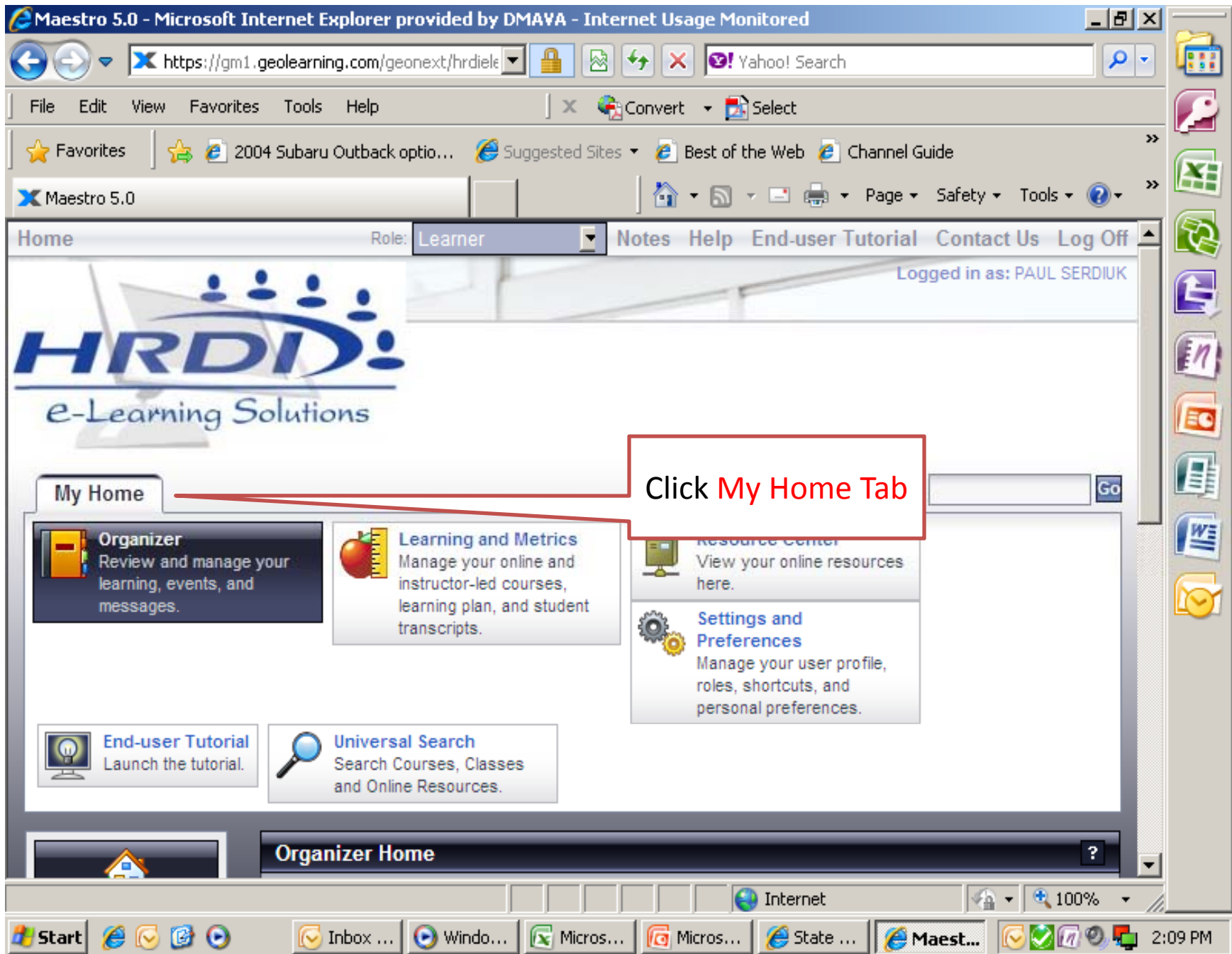
Statewide: NJHome | Services A to Z | Departments/Agencies

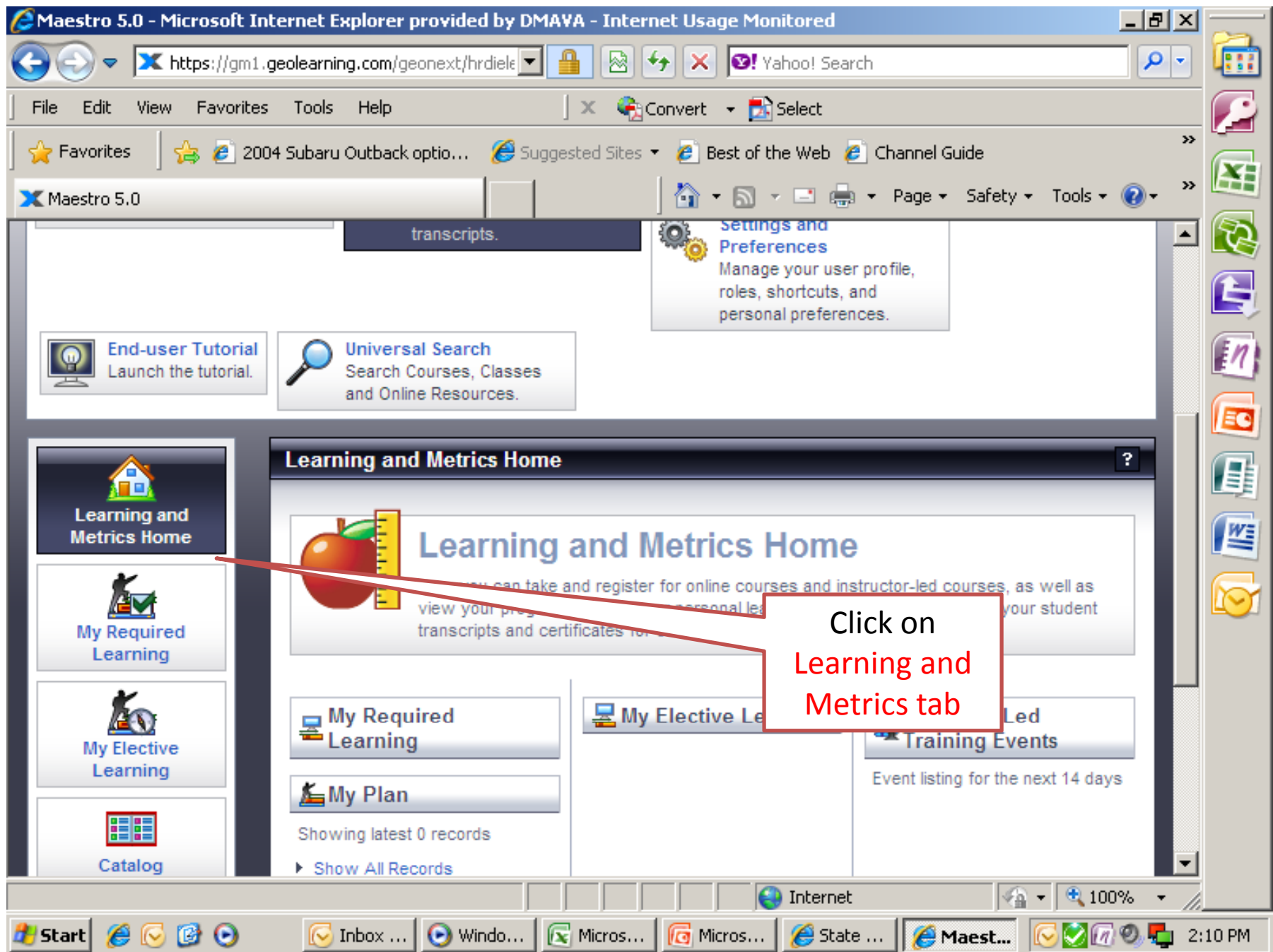
javascript:secureJump('http://visitnj.org/',0,1,0)

Internet 100%

Start Inbox - Mi... Windows ... Microsoft ... Microsoft ... State of ... 2:08 PM

Click HRDI eLearning Tab





Maestro 5.0 - Microsoft Internet Explorer provided by DMAVA - Internet Usage Monitored

https://gm1.geolearning.com/geonext/hrdiel... | Yahoo! Search

File Edit View Favorites Tools Help | X Convert Select

★ Favorites | 2004 Subaru Outback optio... | Suggested Sites | Best of the Web | Channel Guide

Maestro 5.0 | Home | RSS | Print | Page | Safety | Tools

Learning and Metrics Home

Learning and Metrics Home

Here you can take and register for online courses and instructor-led courses, as well as view your progress against your personal learning plan. You can also view your student transcripts and certificates for completed courses.

My Required Learning | **My Elective Learning** | **Instructor-Led Training Events**

Event listing for the next 14 days

My Plan
Showing latest 0 records
▶ [Show All Records](#)

Click on My Required Learning

Start | Internet | 100% | 2:12 PM

Maestro 5.0 - Microsoft Internet Explorer provided by DMAVA - Internet Usage Monitored


https://gm1.geolearning.com/geonext/hrdielearning/trainingandmetricshome.geo?nav=TrainingandMetricsHome

File Edit View Favorites Tools Help X Convert Select X Contribute Edit Post to Blog

Favorites Get more Add-ons CA Service Desk DMAVA Directory Google DMAVA nj.gov VA NJESGR Publications Family Programs HRO Telecom Login 42ND RSG

Maestro 5.0

Home



My Home

- Organizer**
Review and manage your learning, events, and messages
- Learning and Metrics**
Access your assigned courses, learning plans, and upcoming instructor-led training events
- Resource Center**
View resources
- Settings and Preferences**
View and manage your user profile, shortcuts, personal preferences, and plug-ins
- End-user Tutorial**
Launch the tutorial
- Universal Search**
Keyword search for courses, classes and online resources

Learning and Metrics Home

Learning and Metrics Home
Here you can take and register for online courses and instructor-led courses, as well as view your progress against your personal learning plan. You can also view your student transcripts and certificates

My Required Learning

- SANS Securing the Human**
Security awareness video designed to inform, change and secure the behaviors of employees.
- Race & Ethnicity Instructions** In Progress
Please view these instructions prior to completing the survey.

My Elective Learning

My Plan
Showing latest 0 records

Learning and Metrics Home

- Learning and Metrics Home
- My Required Learning
- My Elective Learning
- Catalog

Click on Topic Title

Maestro 5.0 - Microsoft Internet Explorer provided by DMAVA - Internet Usage Monitored

https://gm1.geolearning.com/geonext/hrdielearning/trainingandmetricshome.geo?nav=TrainingandMetricsHome


File Edit View Favorites Tools Help

Convert Select Contribute Edit Post to Blog

Favorites Get more Add-ons CA Service Desk DMAVA Directory Google DMAVA nj.gov VA NJESGR Publications Family Programs HRO Telecom Login 42ND RSG

Maestro 5.0

Home



My Home

- Organizer**
Review and manage your learning, events, and messages
- Learning and Metrics**
Access your assigned courses, learning plans, and upcoming instructor-led training events
- Resource Center**
View resources
- Settings and Preferences**
View and manage your user profile, shortcuts, personal preferences, and plug-ins
- End-user Tutorial**
Launch the tutorial
- Universal Search**
Keyword search for courses, classes and online resources

Learning and Metrics Home

Learning and Metrics Home
Here you can take and register for online courses and instructor-led courses, as well as view your progress against your personal learning plan. You can also view your student transcripts and certificates

My Required Learning

- SANS Securing the Human**
Security awareness video designed to inform, change and secure the behaviors of employees.
- Race & Ethnicity Instructions** In Progress
Please view these instructions prior to completing the survey.

My Elective Learning

My Plan
Showing latest 0 records

Learning and Metrics Home

- Learning and Metrics Home
- My Required Learning
- My Elective Learning
- Catalog

Click on Topic Title

Maestro 5.0 - Microsoft Internet Explorer provided by DMAVA - Internet Usage Monitored

https://gm1.geolearning.com/geonext/hrdielearning/coursesummary.CourseCatalog.geo?src=MyRequiredLearning&id=22505988121&learningAssignment=22579696551


File Edit View Favorites Tools Help

Convert Select Contribute Edit Post to Blog

Favorites Get more Add-ons CA Service Desk DMAVA Directory Google DMAVA nj.gov VA NJESGR Publications Family Programs HRO Telecom Login

Maestro 5.0

Home



My Home

- Organizer**
Review and manage your learning, events, and messages
- Learning and Metrics**
Access your assigned courses, learning plans, and upcoming instructor-led training events
- Resource Center**
View resources
- Settings and Preferences**
View and manage your user profile, shortcuts, personal preferences, and plug-ins
- End-user Tutorial**
Launch the tutorial
- Universal Search**
Keyword search for courses, classes and online resources

Course Catalog: OLT Activities

Course: SANS Securing the Human

OLT Activities Details

Progress: Not Attempted **Required:** Yes **Duration:** 1 hour 14 minutes **Subscription Term Expiration:** N/A

Description:
Security awareness video designed to inform, change and secure the behaviors of employees.

To launch a learning activity, click the activity name below.

OLT Lessons

Activity Name	Progress
SANS Securing the Human	Not Attempted

To go back, click **Close Record**.

Click on the Activity Name

https://services.geolearning.com/courseware/show/22505000451/197461/v3.zip/file/SCORMDriver/ind - Microsoft Internet Explorer p
http://services.geolearning.com/courseware/show/22505000451/197461/v3.zip/file/SCORMDriver/indexAPI.html

Start of Program

Security Awareness Training

Introduction

00:00 01:06

Internet | Protected Mode: On 100%