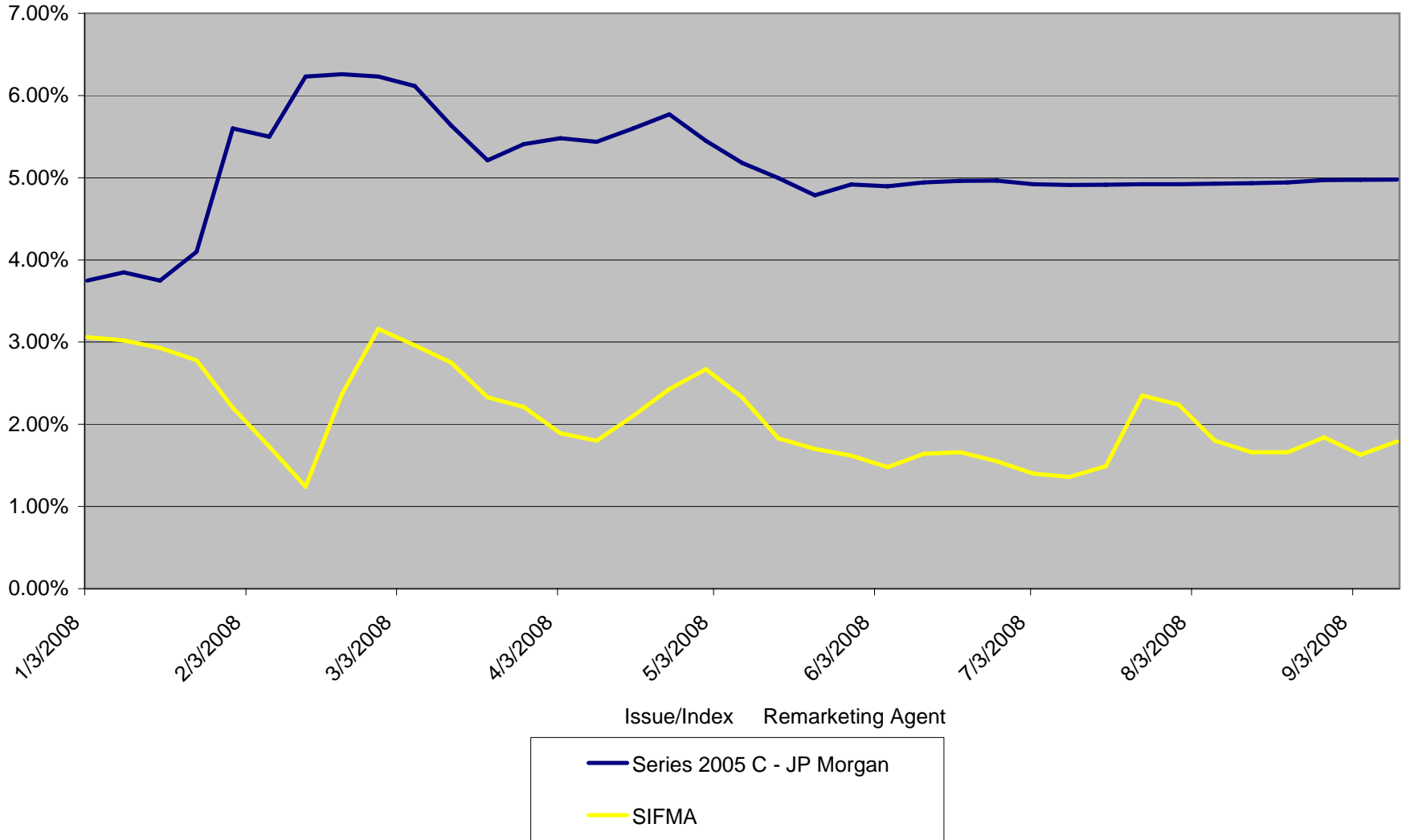




**New Jersey Educational Facilities Authority
Variable Rate Tracker**

**The Richard Stockton College of New Jersey
Series 2005 C - Weekly Auction Rate Securities
XL Capital Insured
(No Longer Outstanding)**



*NJFEA makes every effort to ensure the accuracy of this report, but cannot guarantee that it is error free. Please contact JZoccali@njefa.com to report any inaccuracies.