

Exhibit A: Borough Highlands Preservation Area



Regional Master Plan Overlay Zone Designation
 Zone

- Protection*
- Conservation*
- Existing Community*
- Existing Community Environmentally Constrained*
- Conservation Environmentally Constrained*
- Lake Community*
- Wildlife Management*
- Lakes Greater Than 10 acres
- Preservation Area
- Municipal Boundaries

Bloomsbury Borough



1 inch = 0.28 miles



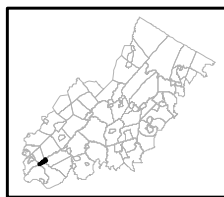
Exhibit C: Highlands Contaminated Sites Inventory



Highlands Contaminated Site Inventory

- Tier 1 Sites
- Tier 1 Sites (Polygons)
- Tier 2 Sites
- ▭ Preservation Area
- ▭ Municipal Boundaries

Bloomsbury Borough






1 inch = 0.28 miles

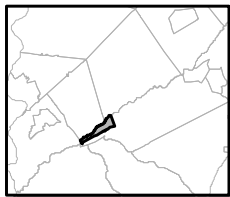


Exhibit E: Forest Resource Area



-  Forest Resource Area
-  Preservation Area
-  Municipal Boundaries

Bloomsbury Borough






1 inch = 0.28 miles



Exhibit F: Total Forest Area



-  Forested Areas
-  Preservation Area
-  Municipal Boundaries

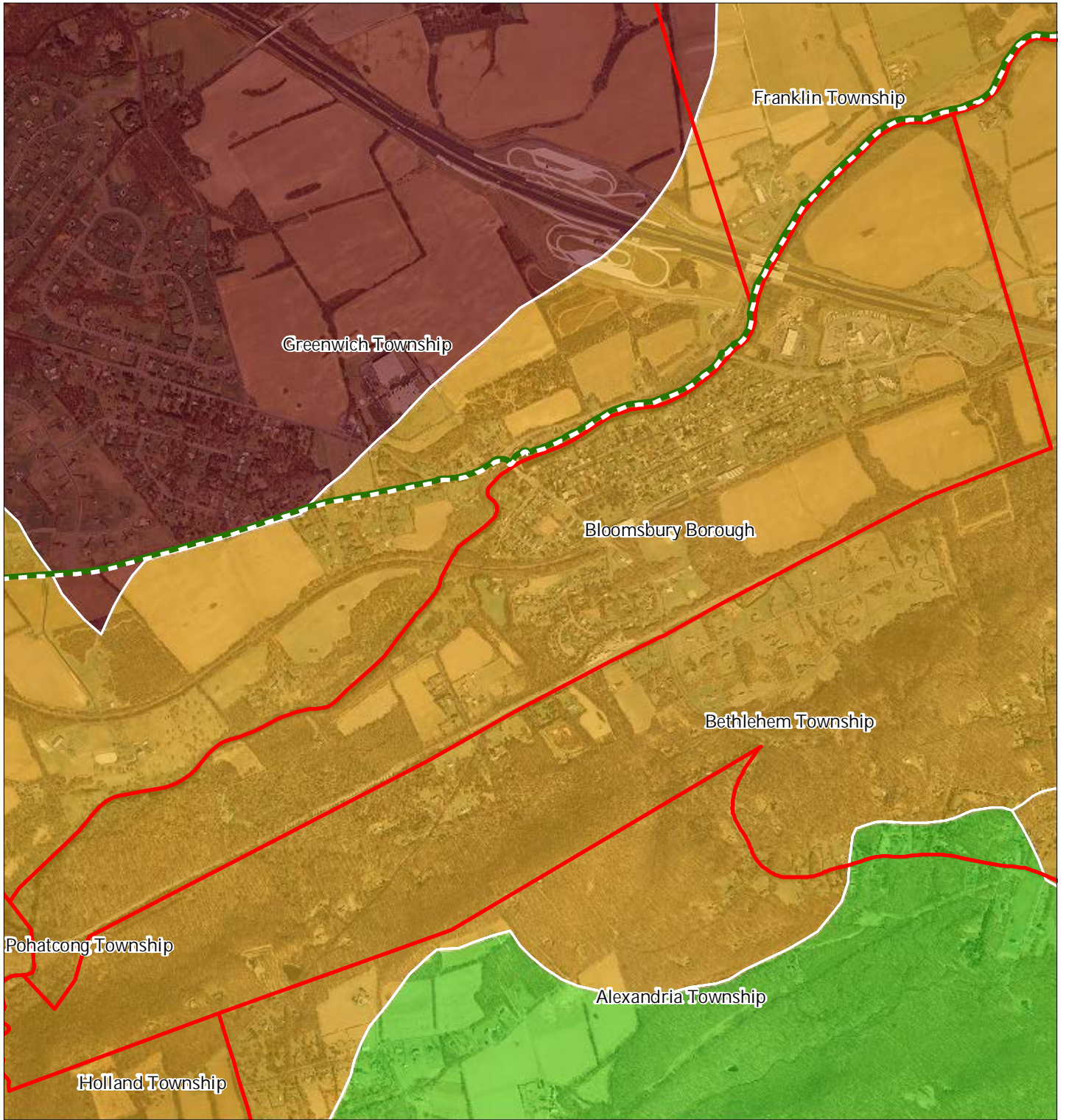
Bloomsbury Borough








1 inch = 0.28 miles



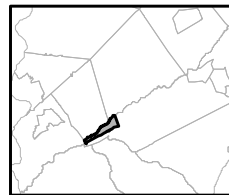
Exhibit G: Forest Subwatersheds



Forest Integrity by HUC14 Subwatershed

-  *Low*
-  *Moderate*
-  *High*
-  Preservation Area
-  Municipal Boundaries

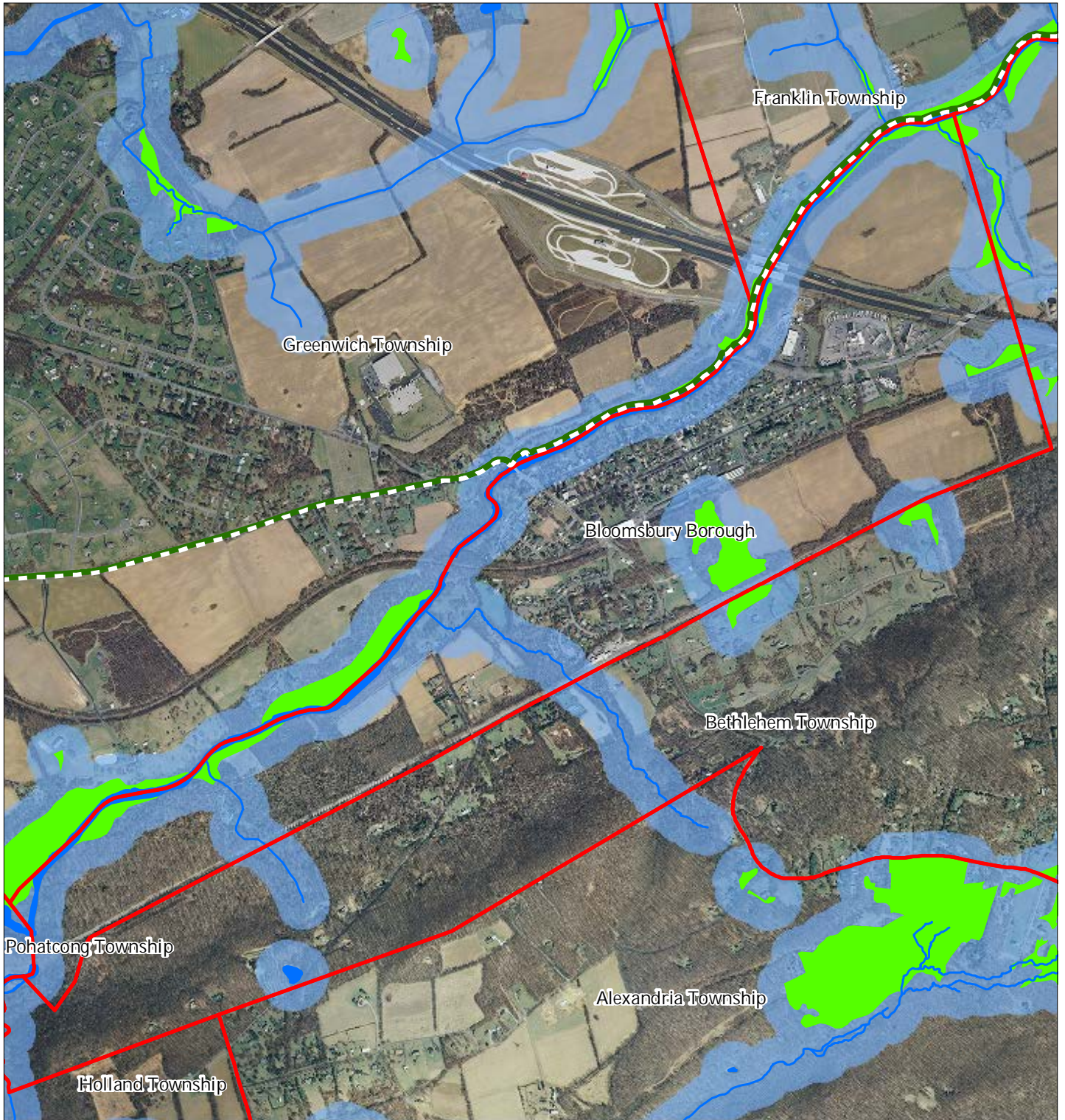
Bloomsbury Borough



1 inch = 0.28 miles

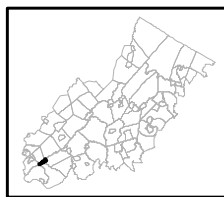


Exhibit H: Highlands Open Waters



- Highlands Open Water Buffers (300ft)
- Streams
- Wetlands
- Lakes & Ponds
- Preservation Area
- Municipal Boundaries

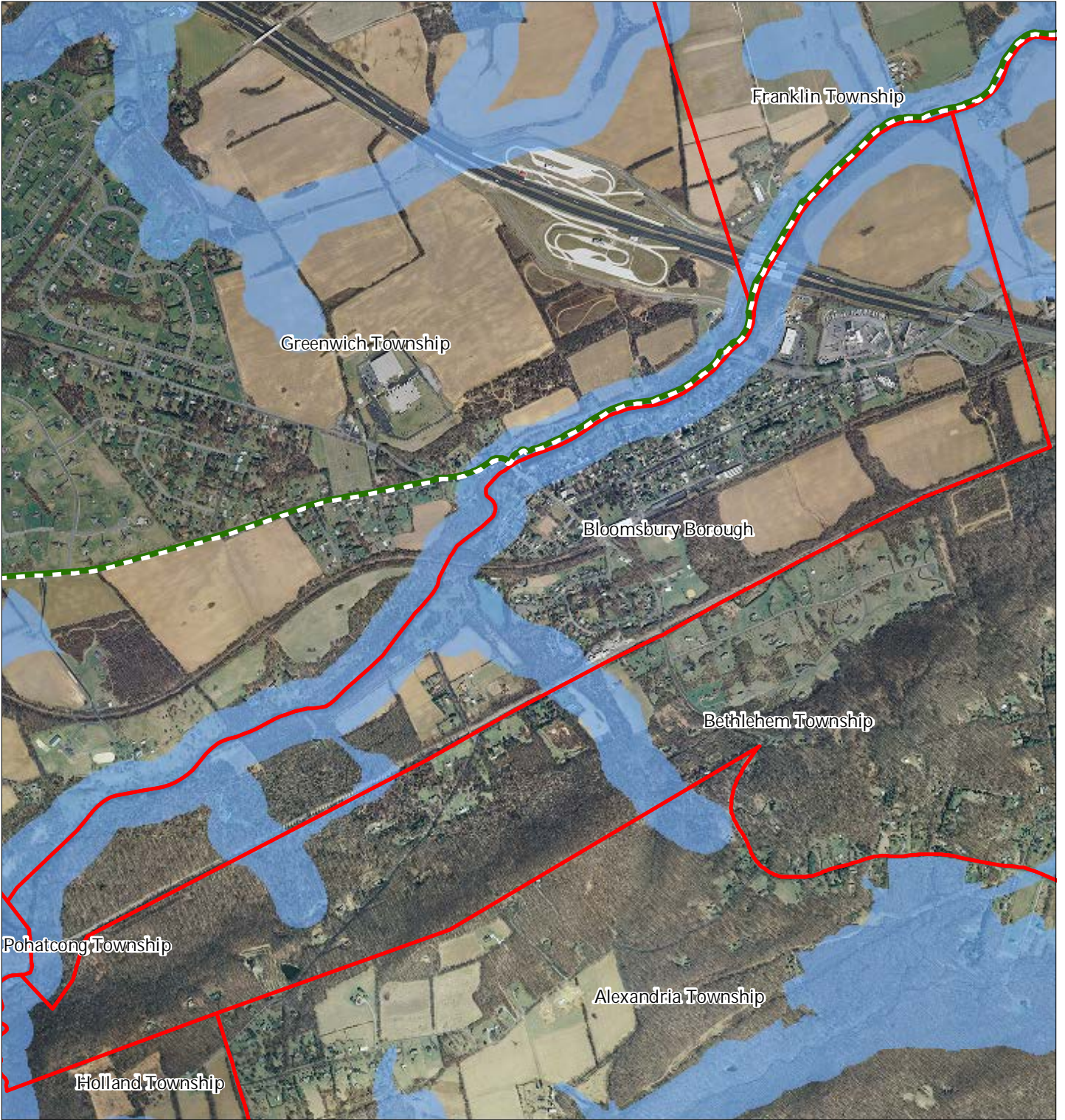
Bloomsbury Borough






1 inch = 0.28 miles

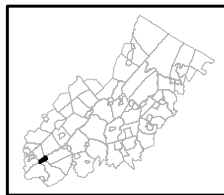


Exhibit I: Highlands Riparian Areas



-  Riparian Area
-  Preservation Area
-  Municipal Boundaries

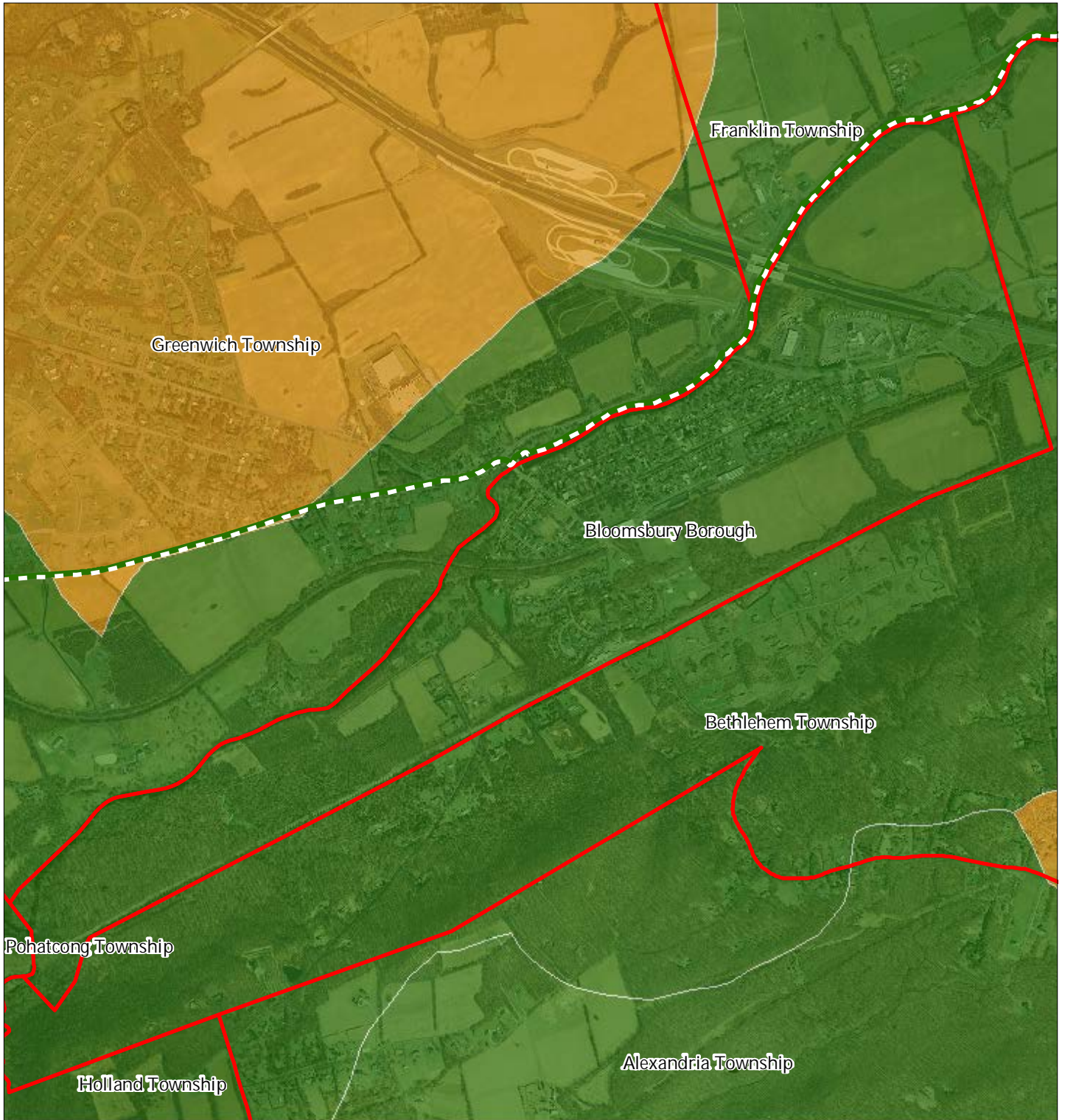
Bloomsbury Borough



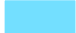




1 inch = 0.28 miles



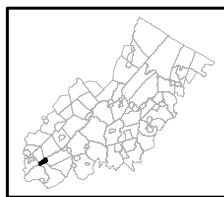
Exhibit J: Watershed Values



Watershed Values by HUC14 Subwatershed

-  *Low*
-  *Moderate*
-  *High*
-  Preservation Area
-  Municipal Boundaries

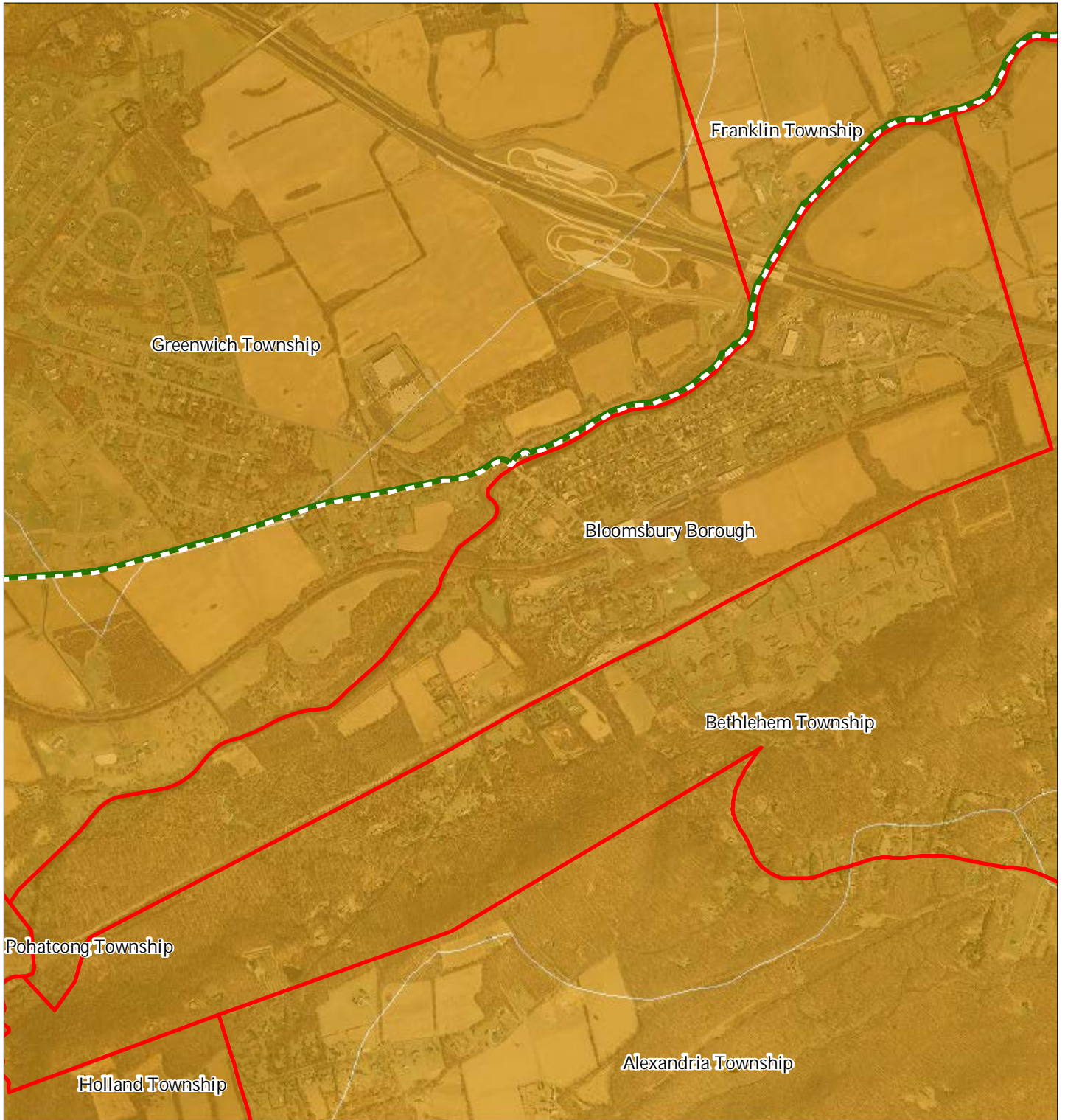
Bloomsbury Borough



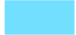




1 inch = 0.28 miles



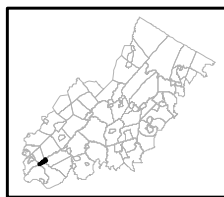
Exhibit K: Riparian Integrity



Riparian Integrity by HUC14 Subwatershed

-  *Low*
-  *Moderate*
-  *High*
-  Preservation Area
-  Municipal Boundaries

Bloomsbury Borough







1 inch = 0.28 miles



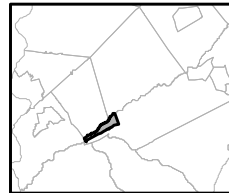
Exhibit L: Steep Slope Protection Areas



Steep Slopes

-  Moderate
-  Severe
-  Preservation Area
-  Municipal Boundaries

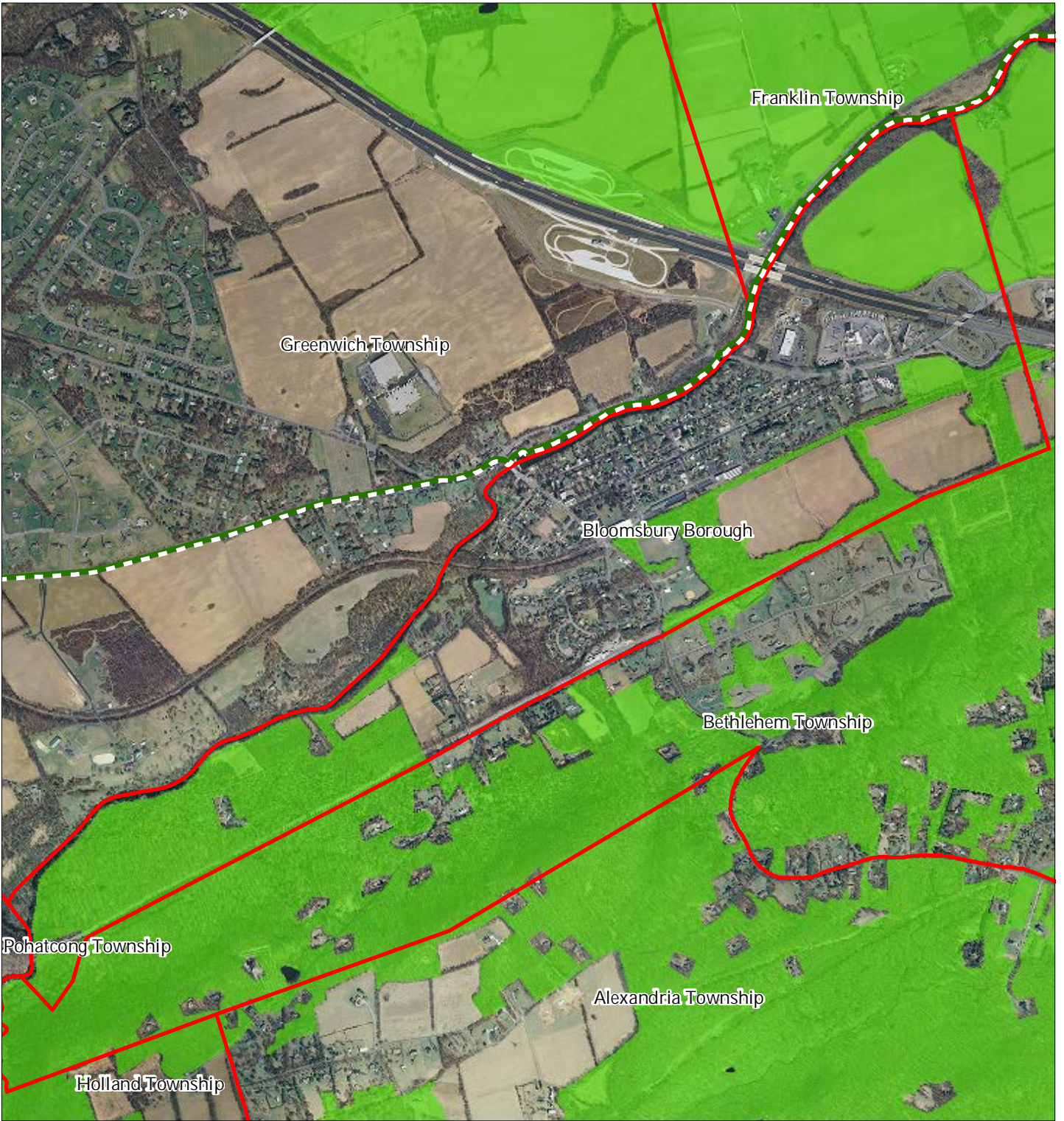
Bloomsbury Borough






1 inch = 0.28 miles



Exhibit M: Critical Wildlife Habitat



-  Critical Wildlife Habitat
-  Preservation Area
-  Municipal Boundaries

Bloomsbury Borough






1 inch = 0.28 miles

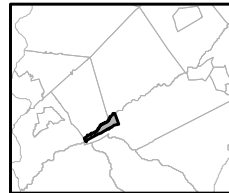


Exhibit N: Significant Natural Areas



-  Significant Natural Areas
-  Preservation Area
-  Municipal Boundaries

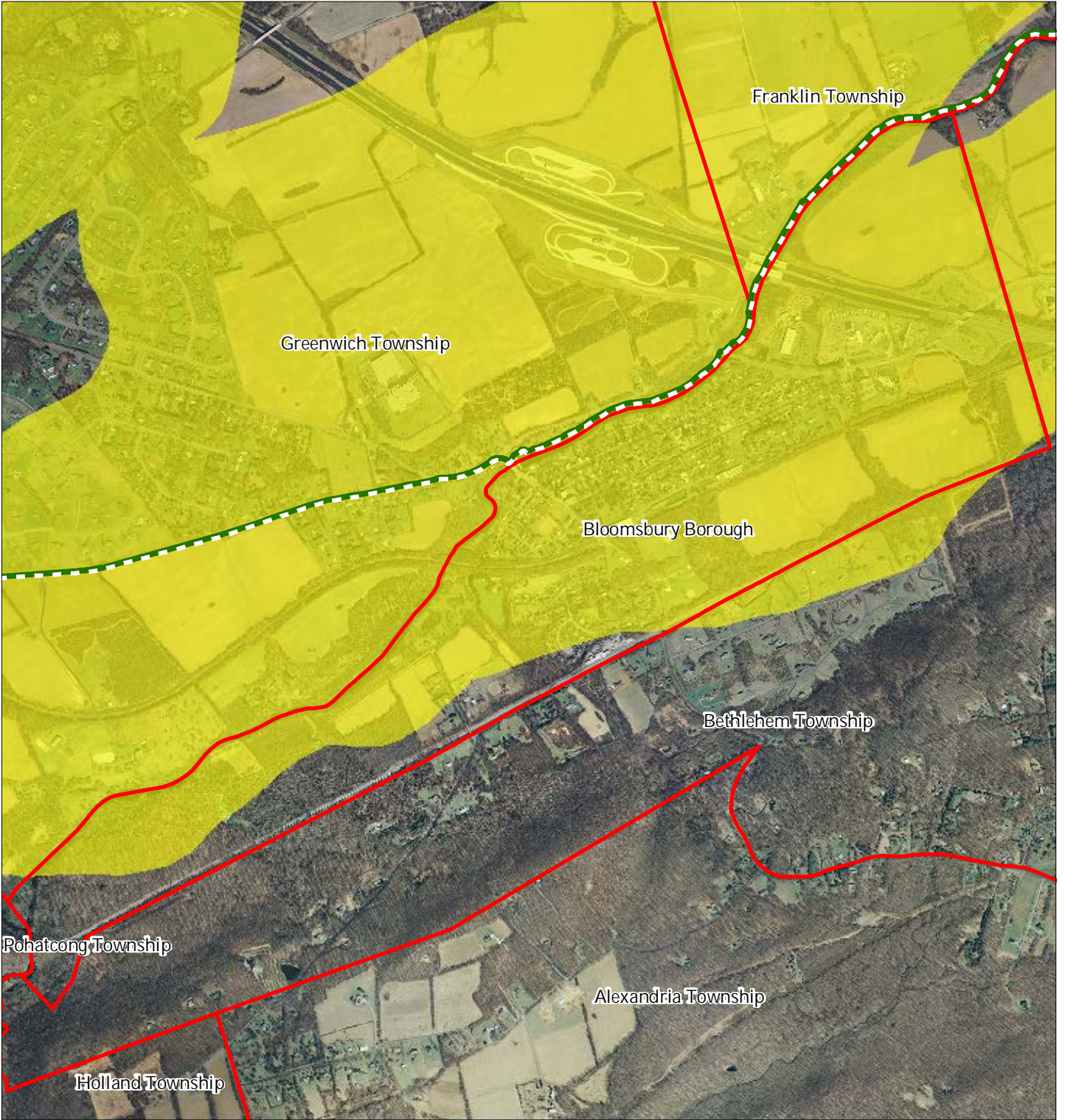
Bloomsbury Borough






1 inch = 0.28 miles

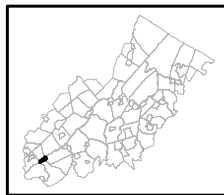


Exhibit P: Carbonate Rock Areas



-  Carbonate Rock Area
-  Preservation Area
-  Municipal Boundaries

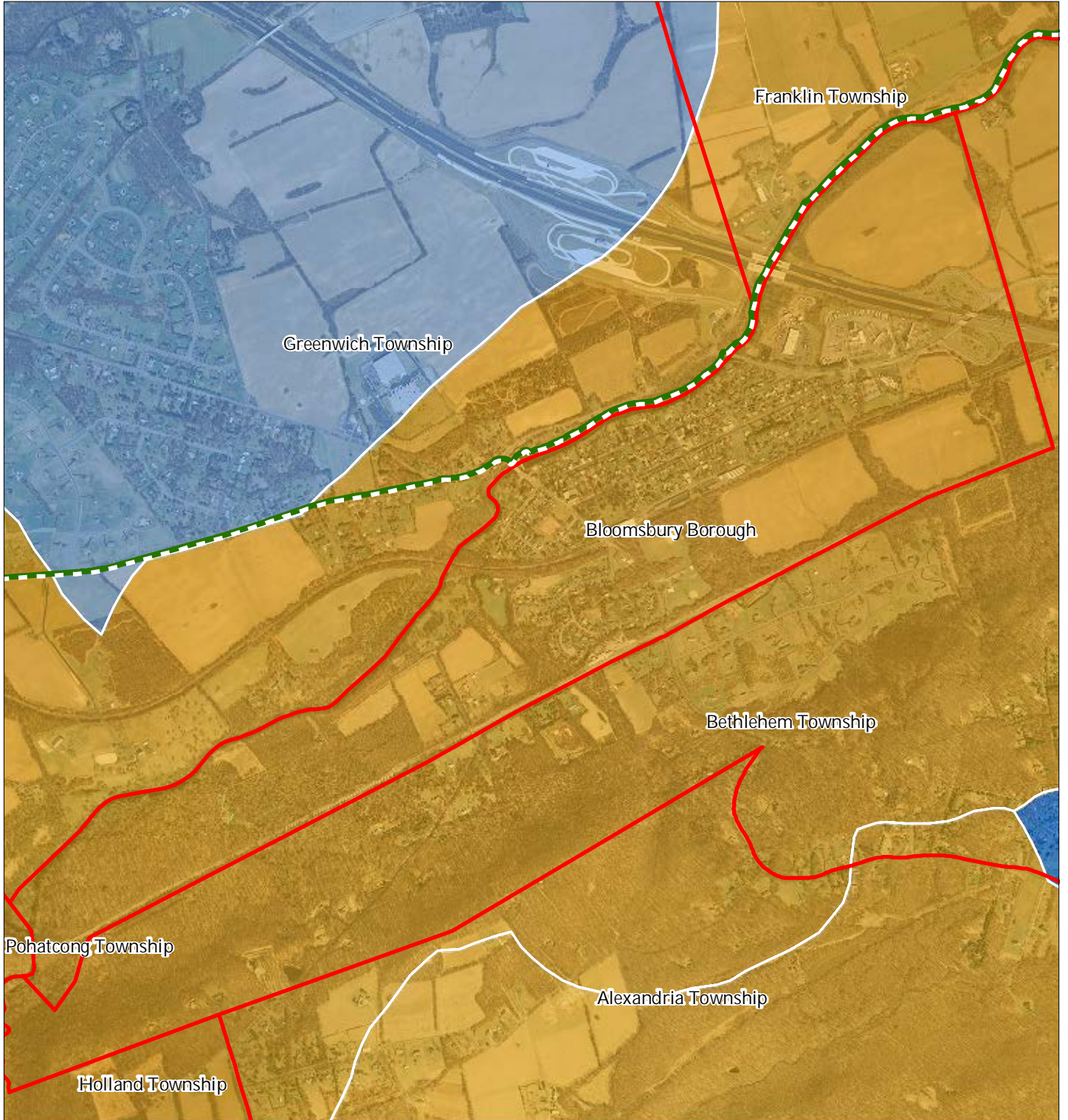
Bloomsbury Borough



1 inch = 0.28 miles



Exhibit R: Net Water Availability



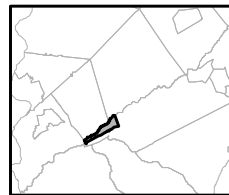
Net Water Availability By HUC14

Million Gallons Per Day (MGD)

- 0.10 - 0.39
- 0.05 - 0.09
- 0.00 - 0.04
- 0.09 - 0.00
- 0.99 - -0.10
- 7.10 - -1.00

- Preservation Area
- Municipal Boundaries

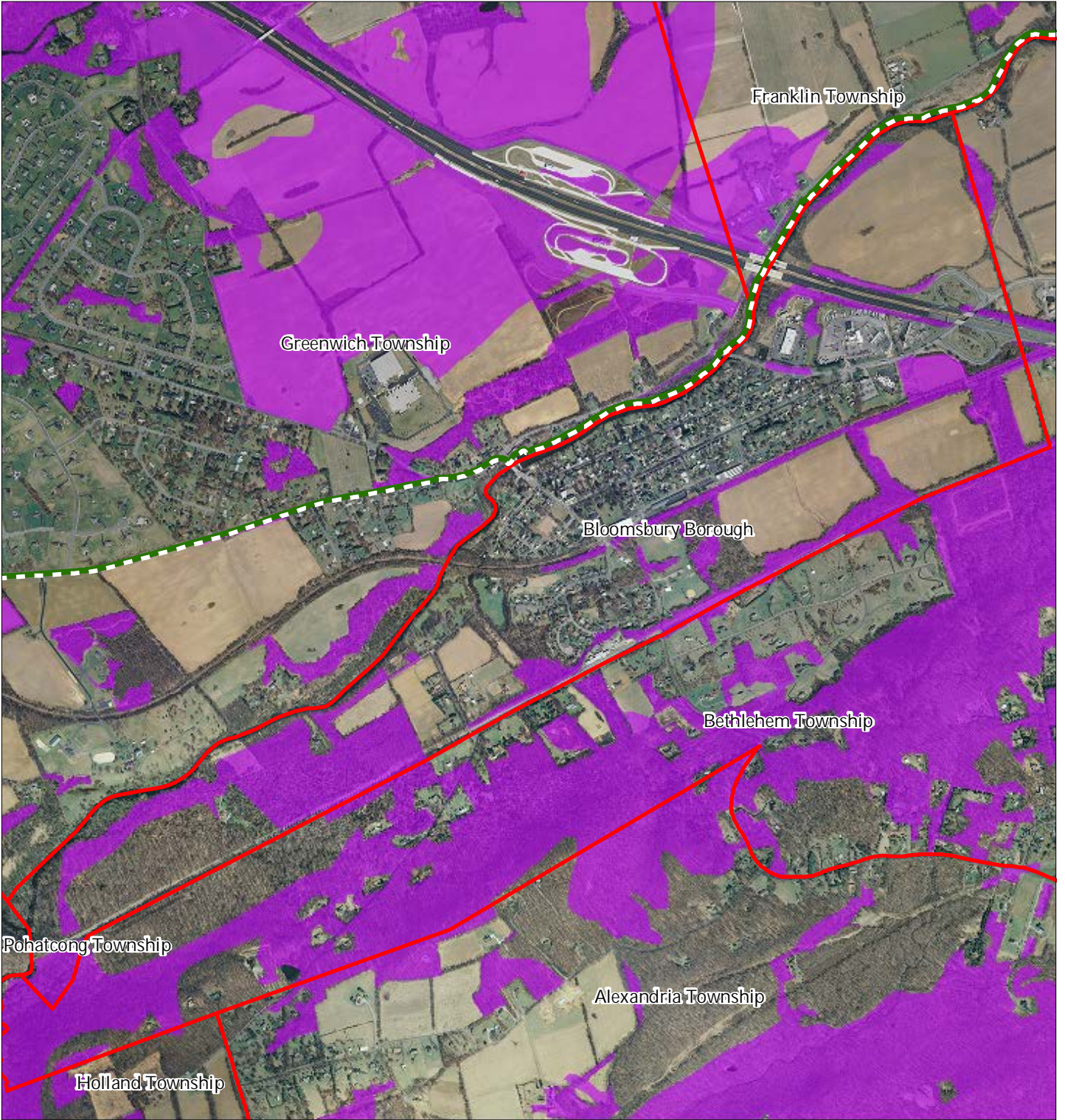
Bloomsbury Borough






1 inch = 0.28 miles



Exhibit S: Prime Ground Water Recharge Areas



-  Prime Groundwater Recharge Areas
-  Preservation Area
-  Municipal Boundaries

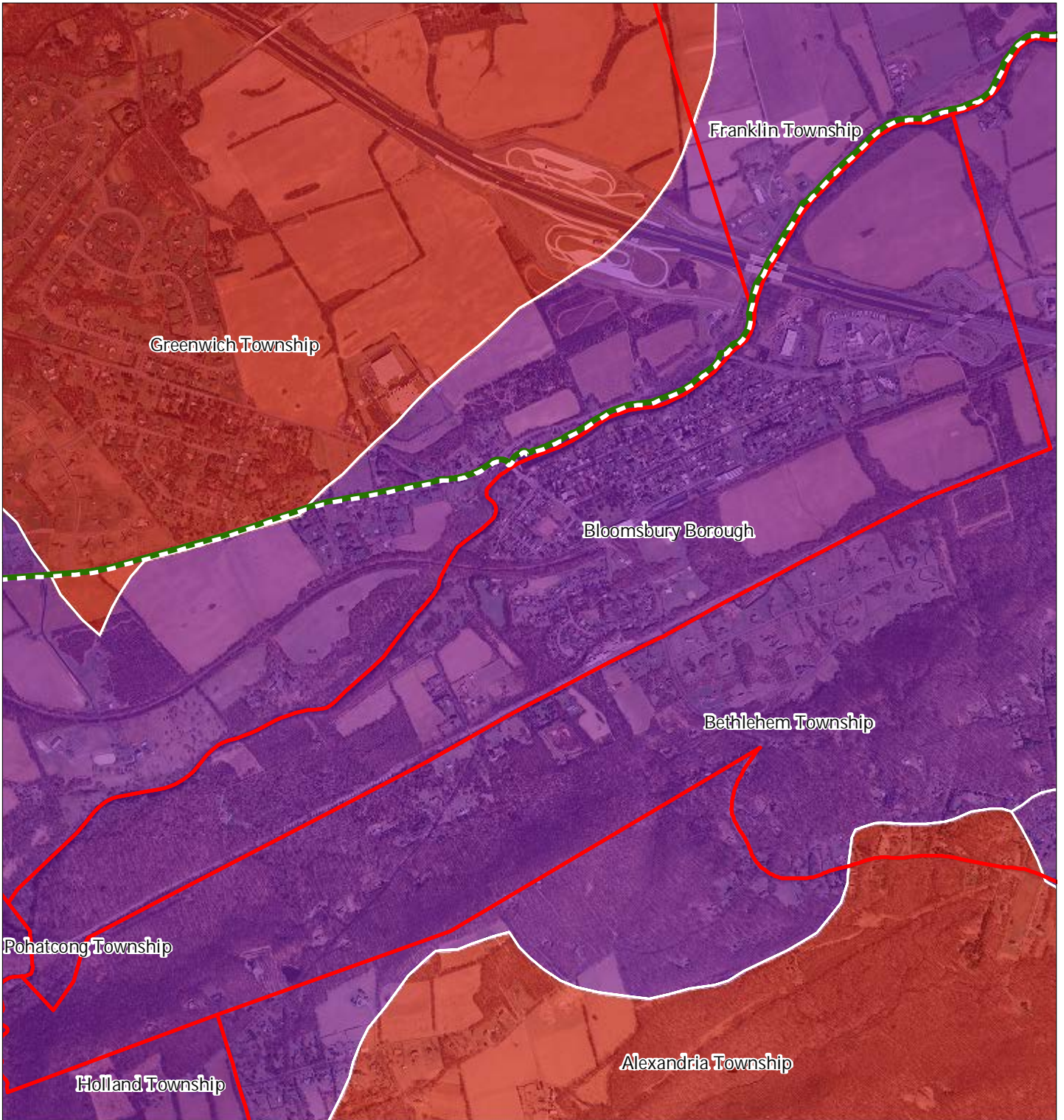
Bloomsbury Borough



1 inch = 0.28 miles



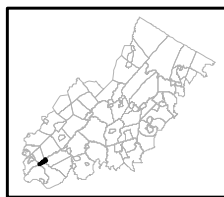
Exhibit T: HUC 14s on NJDEP Impaired Waters List



Impaired Waters Overall Assessment by HUC14 Subwatershed

- Non Impacted*
- Insufficient Data Available*
- Moderate*
- Water Quality Impaired*
- Preservation Area
- Municipal Boundaries

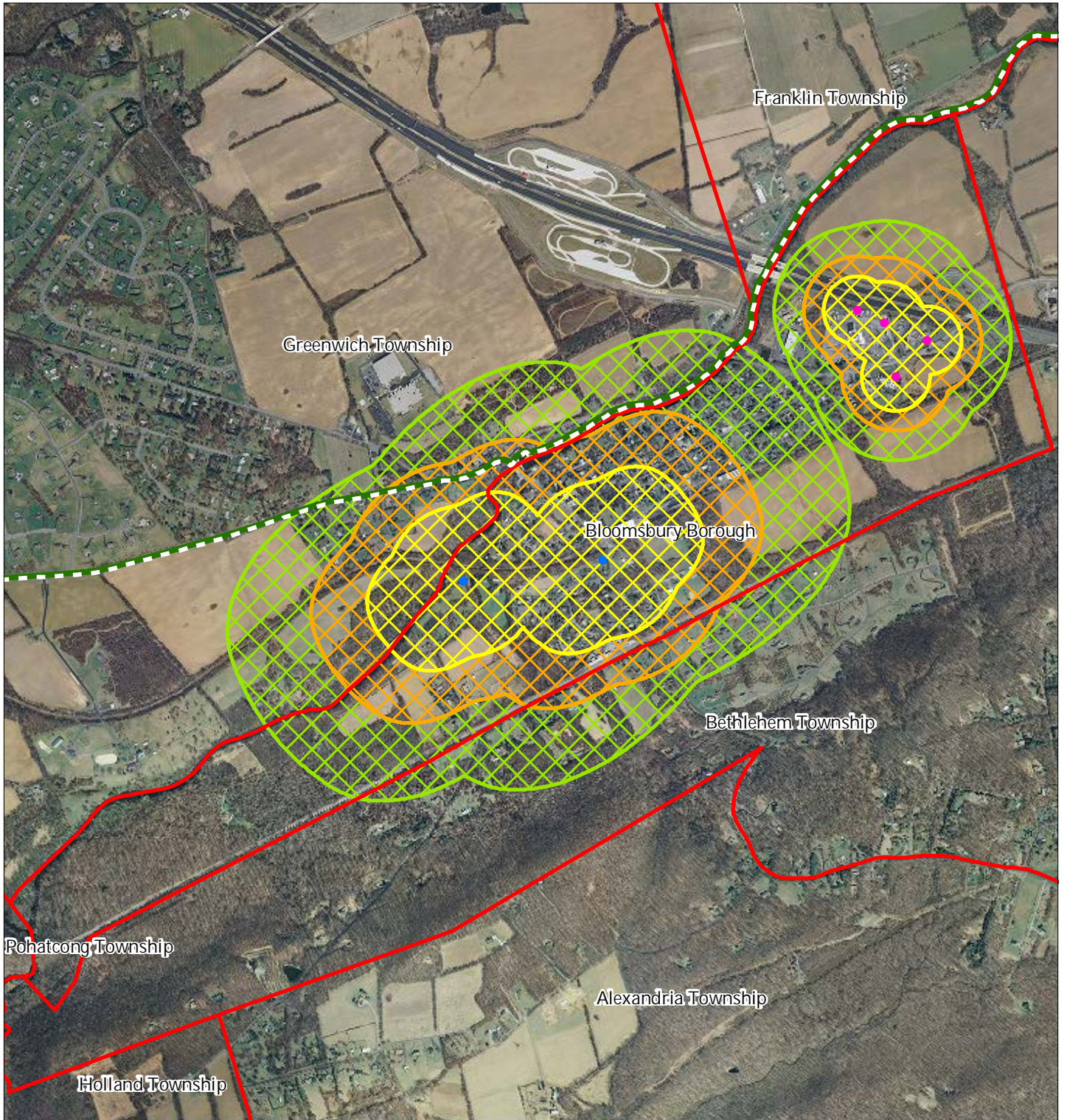
Bloomsbury Borough



1 inch = 0.28 miles





Exhibit U: Wellhead Protection Areas



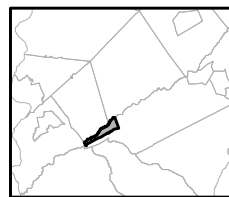
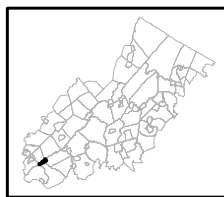
- Public Community Wells
- Public Non-Community Wells

Wellhead Protection Areas

-  2-Year Tier
-  5-Year Tier
-  12-Year Tier

-  Preservation Area
-  Municipal Boundaries

Bloomsbury Borough



1 inch = 0.28 miles

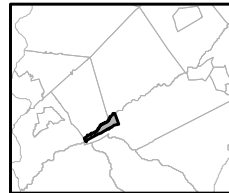


Exhibit V: Public Community Water Systems



- Public Community Water Systems
- Preservation Area
- Municipal Boundaries

Bloomsbury Borough







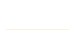
1 inch = 0.28 miles





Exhibit Y: Highlands Roadway Network



Roadway Network

-  Interstate Highways
-  U.S. Routes
-  State Routes
-  County Routes
-  Local Routes

-  Preservation Area
-  Municipal Boundaries

Bloomsbury Borough



1 inch = 0.28 miles



Exhibit Z: Highlands Transit Network



- | | |
|-------------------------------------------|----------------------|
| Rail Network | Rail Stations |
| <i>Boonton Line</i> | Park and Ride Sites |
| <i>Main Line & Bergen County Line</i> | Private Bus Lines |
| <i>Morris and Essex Line</i> | NJ Transit Bus Lines |
| <i>Raritan Valley Line</i> | Airports |
| Freight Rail Lines | |
| <i>Freight Rail Lines</i> | |
| <i>Abandoned Freight Rail</i> | |

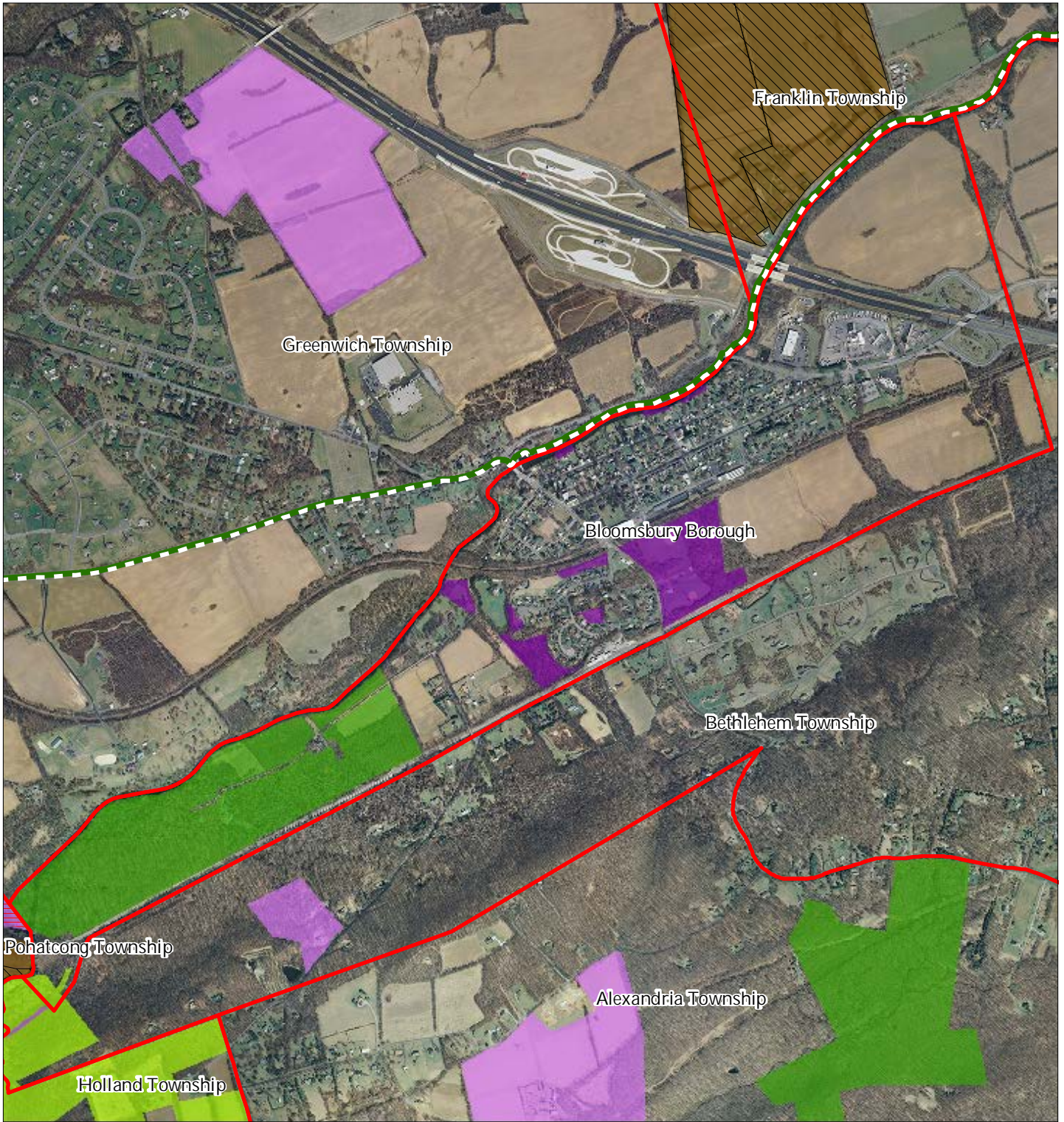
Bloomsbury Borough



1 inch = 0.28 miles

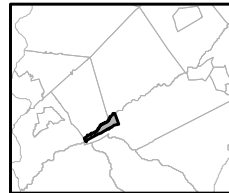


Exhibit AA: Preserved Lands



Bloomsbury Borough

- | | |
|-----------------------------------------|-------------------------------|
| Preserved Lands | Conservation Easements |
| Federal Open Space | Green Acres |
| State Open Space | SADC Easements |
| County Open Space | SADC Final |
| Municipal Open Space | SADC Preserved |
| Non-Profit/Private Open Space | Municipal Boundaries |
| Water Supply Watershed Lands | Preservation Area |
| Preserved Farmland | |
| Highlands Transfer of Development Lands | |







1 inch = 0.28 miles



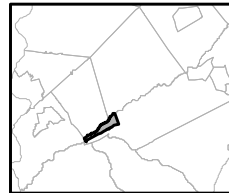
Exhibit BB: Highlands Conservation Priority Areas



Conservation Priority Area

-  Moderate
-  High
-  Preservation Area
-  Municipal Boundaries

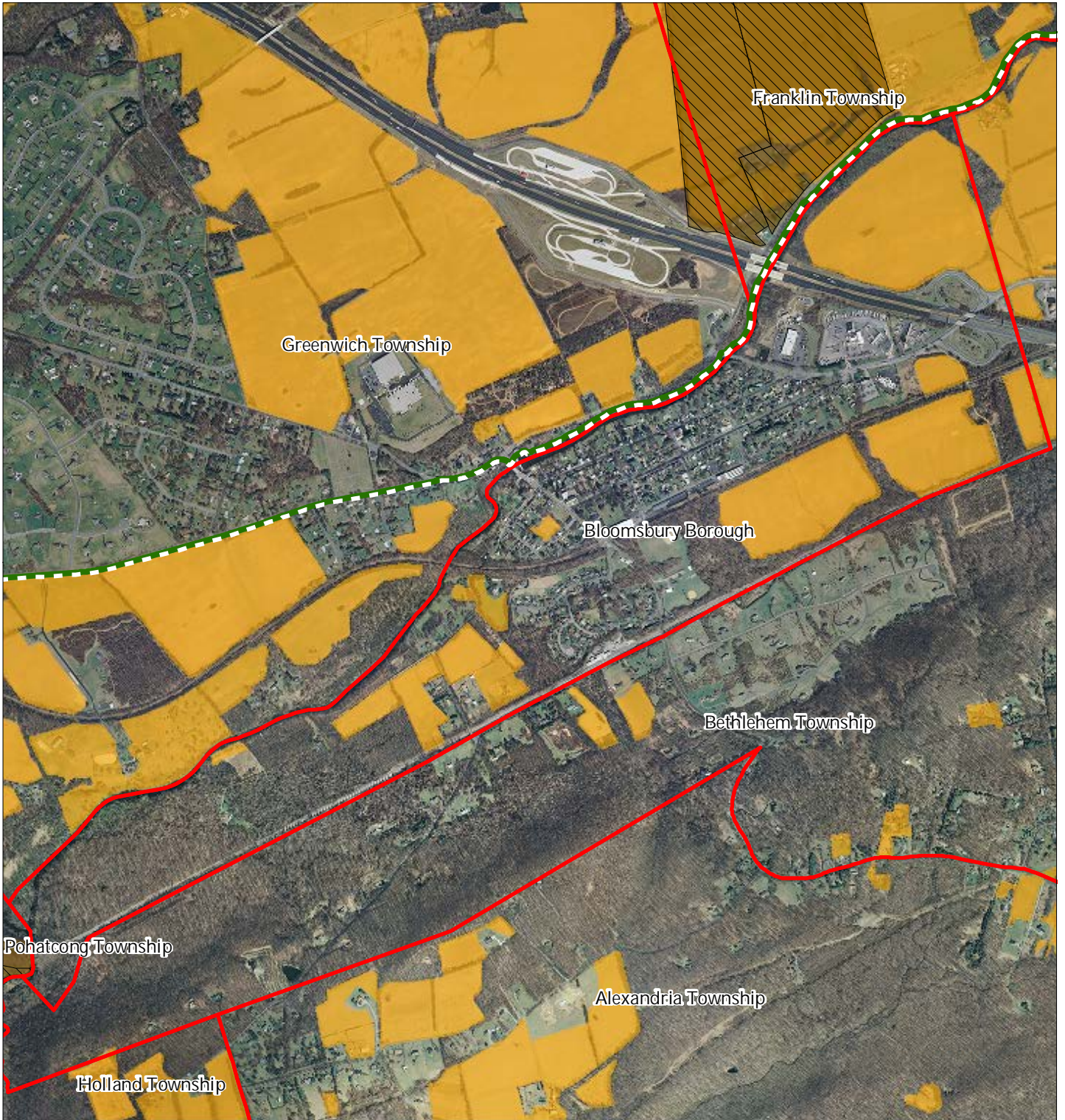
Bloomsbury Borough



1 inch = 0.28 miles



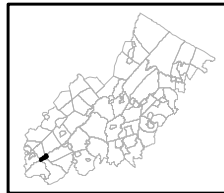
Exhibit DD: Preserved Farms, SADC Easements, All Agricultural Uses



SADC Easements

-  *SADC Final*
-  *SADC Preserved*
-  Preserved Farmland
-  Agriculture Uses
-  Preservation Area
-  Municipal Boundaries

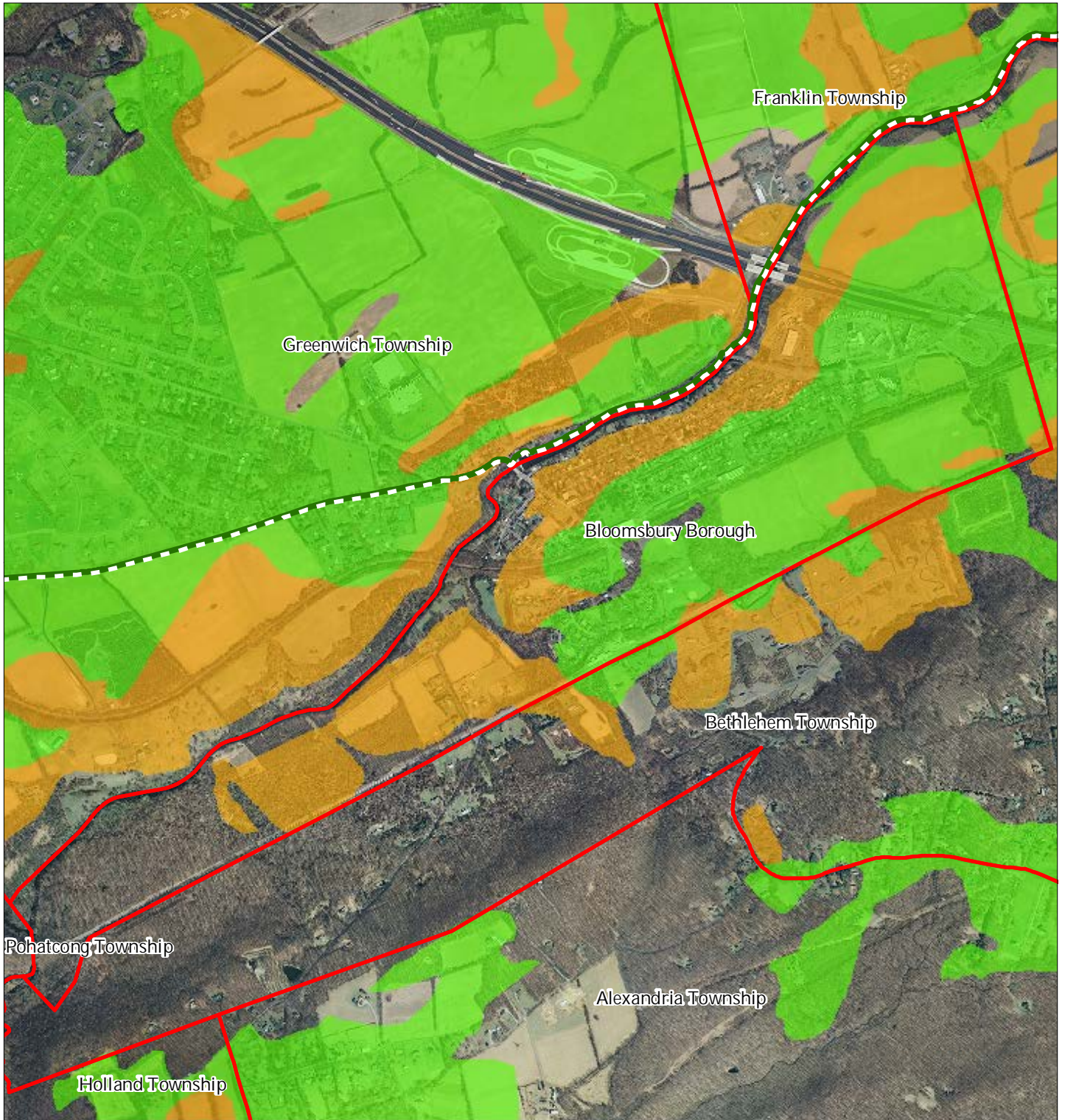
Bloomsbury Borough



1 inch = 0.28 miles



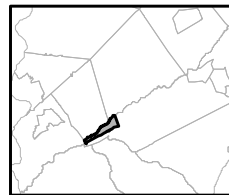
Exhibit EE: Important Farmland Soils



Important Farmland Soils

- Prime Farmland
- Farmland of Local Importance
- Farmland of Statewide Importance
- Farmland of Unique Importance
- Preservation Area
- Municipal Boundaries

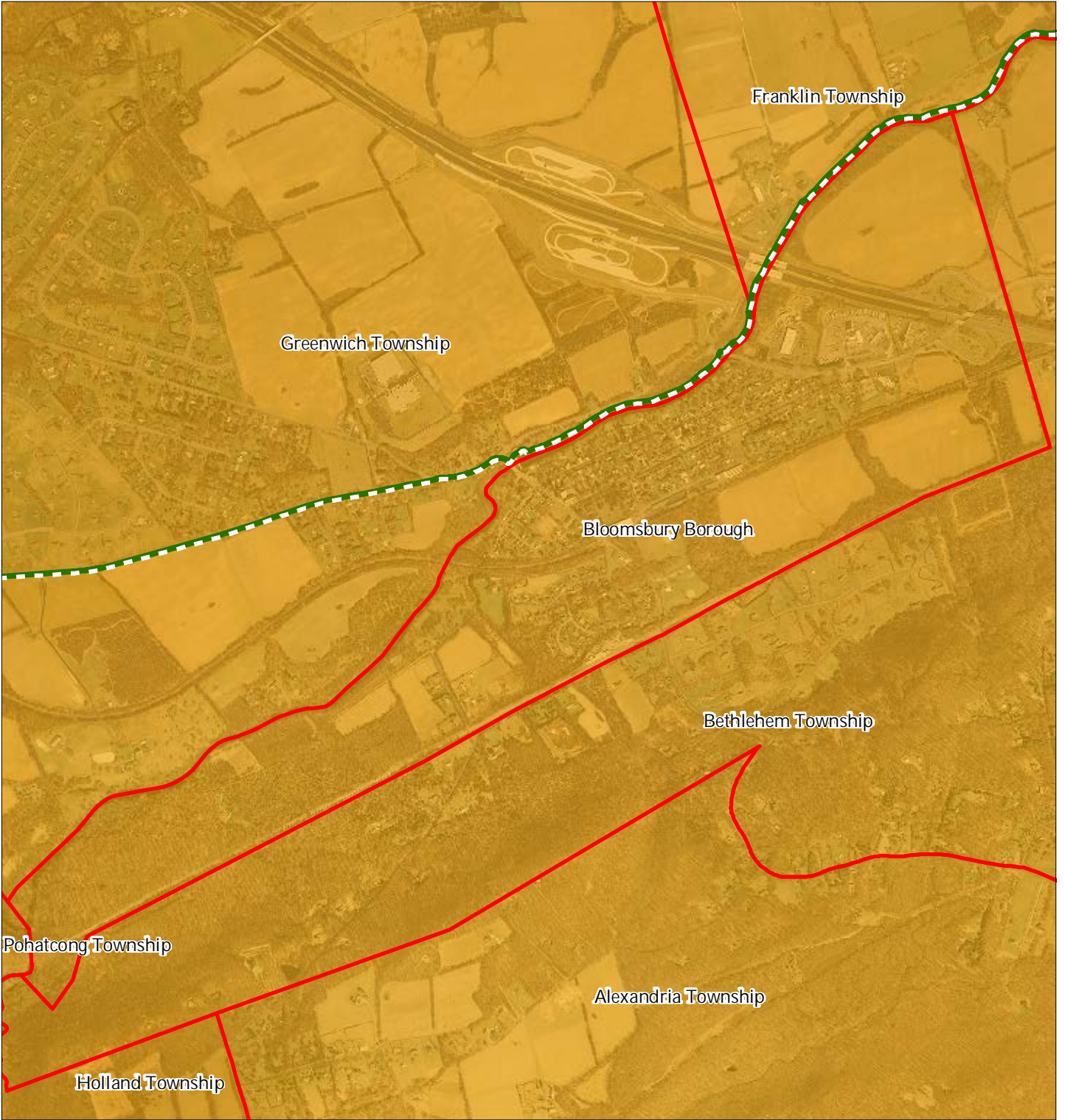
Bloomsbury Borough






1 inch = 0.28 miles

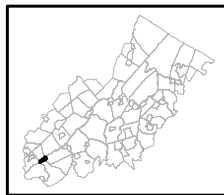


Exhibit FF: Agricultural Resource Area



-  Agricultural Resource Area
-  Preservation Area
-  Municipal Boundaries

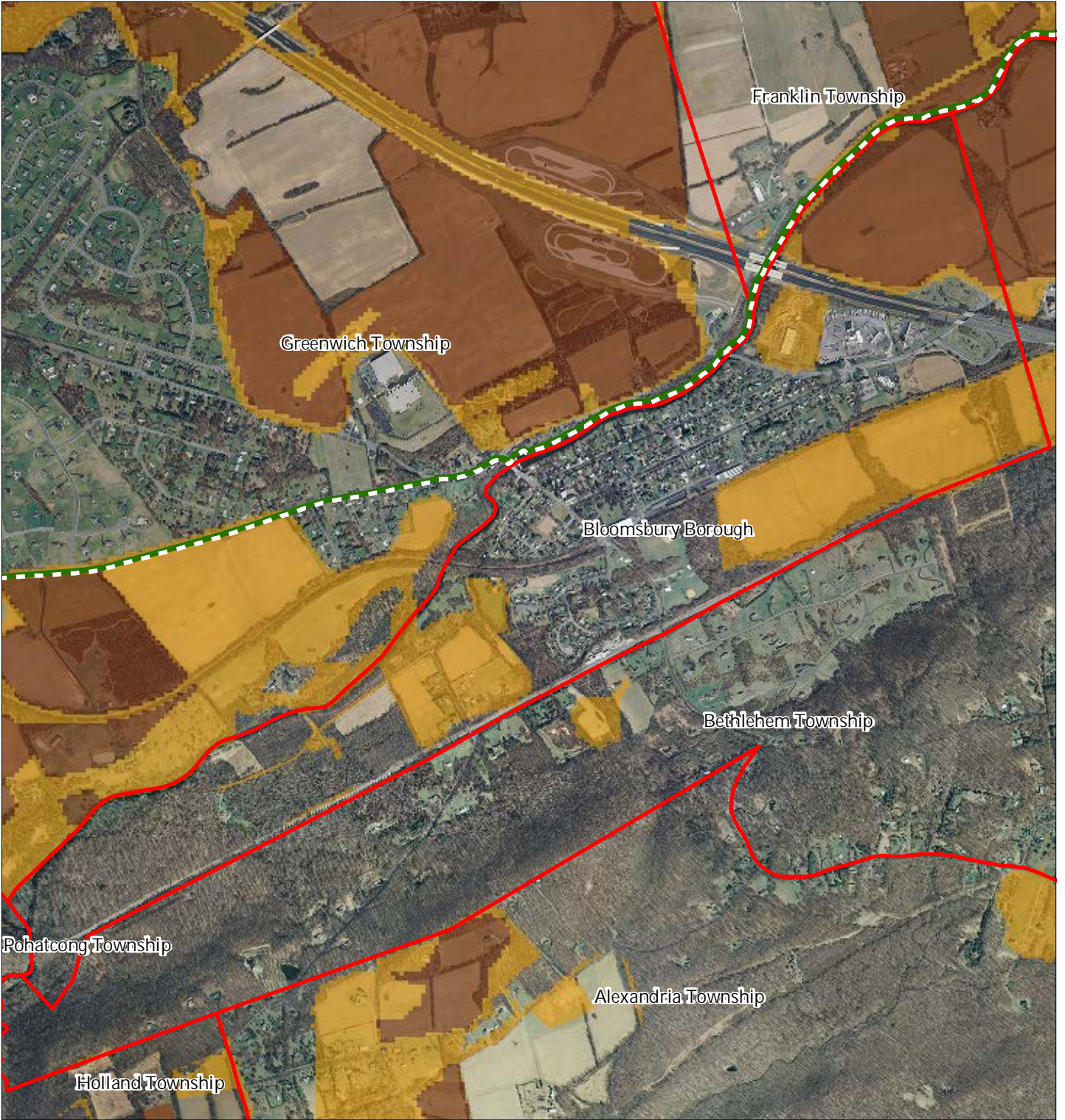
Bloomsbury Borough



1 inch = 0.28 miles



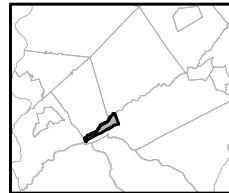
Exhibit GG: Agricultural Priority Area



Agricultural Priority Area

-  Moderate
-  High
-  Preservation Area
-  Municipal Boundaries

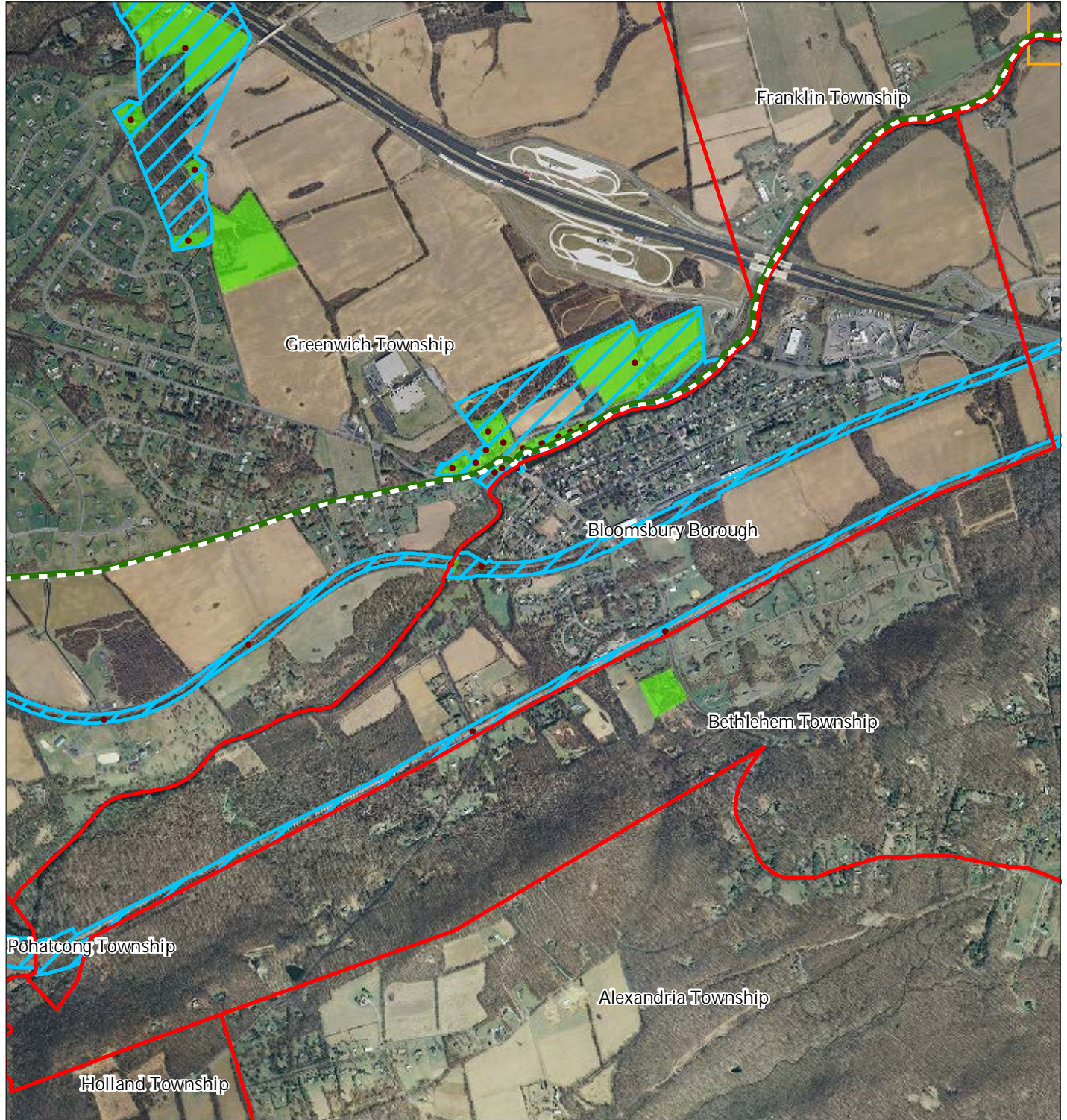
Bloomsbury Borough



1 inch = 0.28 miles

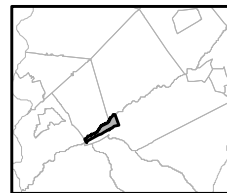
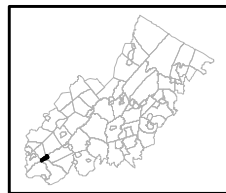


Exhibit HH: Historic, Cultural, and Archaeological Resource Inventory



Bloomsbury Borough

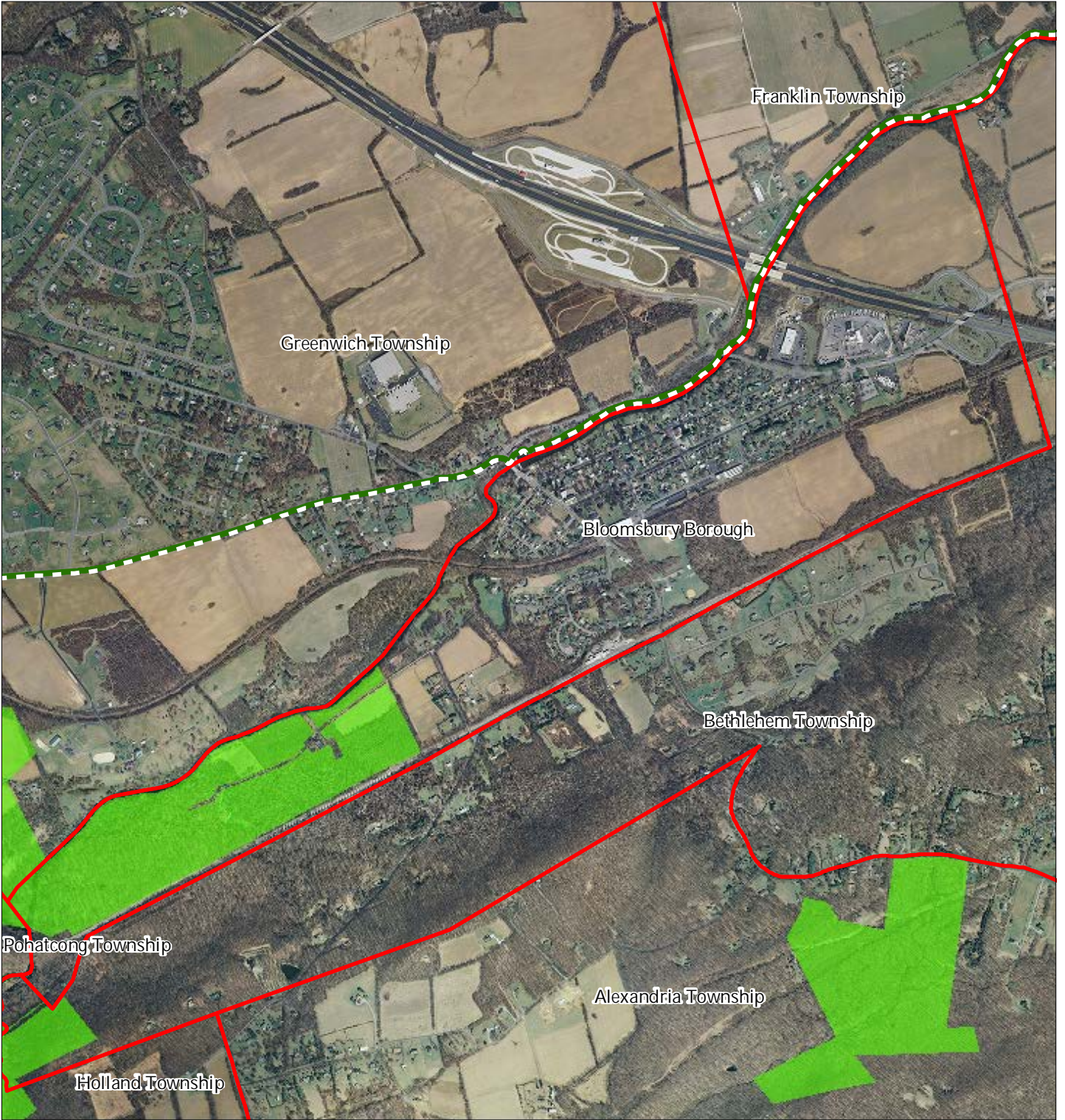
-  Preservation Area
-  Municipal Boundaries
-  Archaeological Grids (1 sqmi)
-  NJ Historic Districts
-  Historic Property Points
-  Historic Property Polygons






1 inch = 0.28 miles

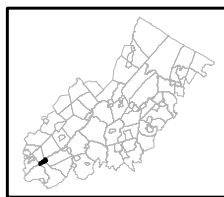


Exhibit II: Baseline Scenic Resources Inventory



-  Scenic Resources
-  Municipal Boundaries
-  Preservation Area

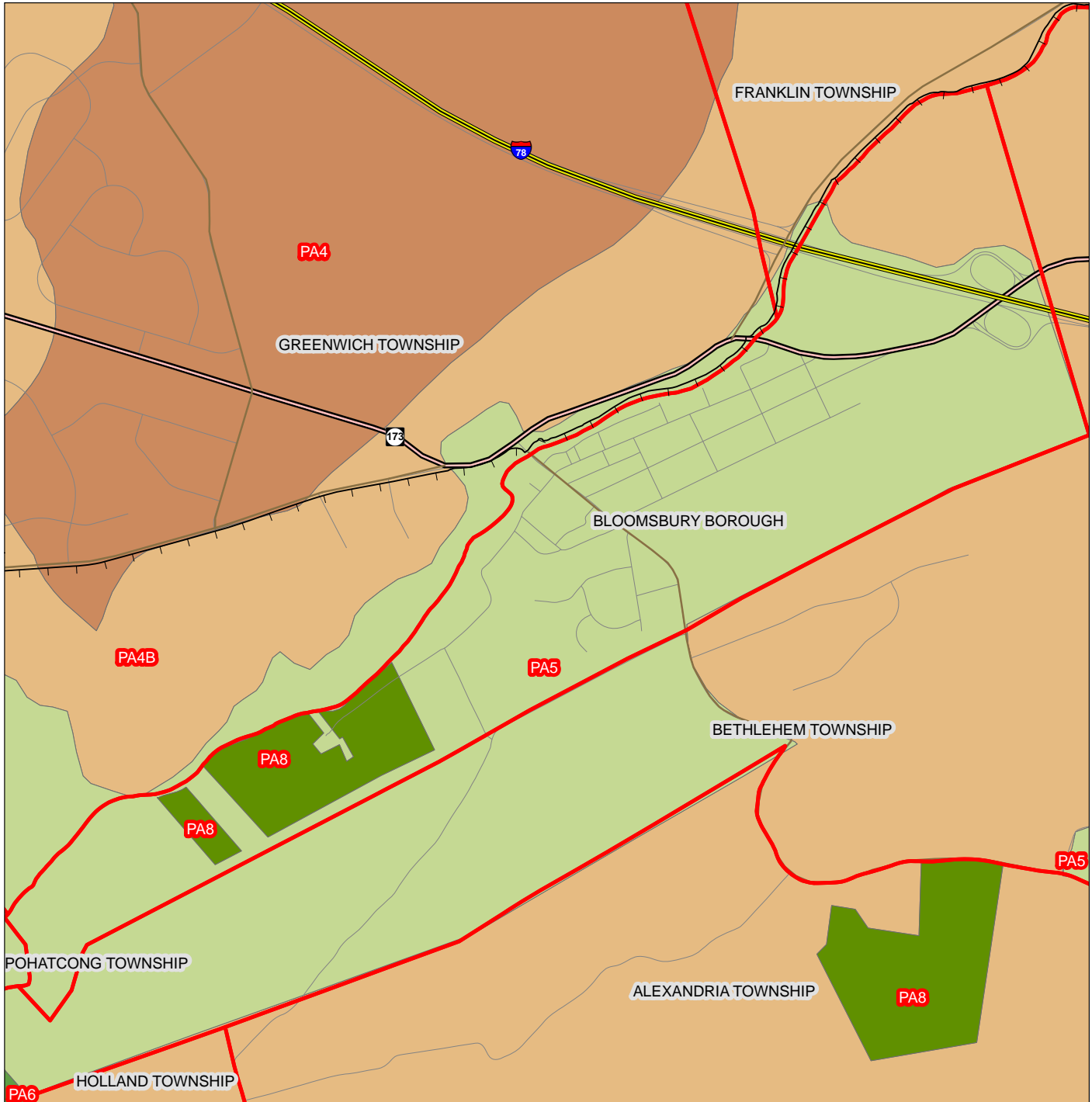
Bloomsbury Borough



1 inch = 0.28 miles



Exhibit JJ: SDRP Planning Areas



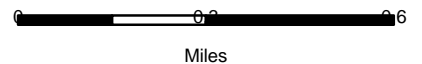
Legend

- Preservation Area
- Municipal Boundaries
- Interstate Highways
- U.S. Routes
- State Routes
- County Routes
- Designated Centers*

State Planning Areas*

- METROPOLITAN (PA1)
- SUBURBAN (PA2)
- FRINGE (PA3)
- RURAL (PA4)
- RURAL ENVIRONMENTALLY SENSITIVE (PA42)

- ENVIRONMENTALLY SENSITIVE (PA5)
- PARK (PA6)
- FEDERAL PARK (PA7)
- STATE PARK (PA8)
- WATER (PA11)
- MILITARY (PA12)



* All designated centers expired on 1/7/2008 except Byram (expires 5/19/2010), Stanhope (expires 10/16/2008), and Sparta and Vernon (expire 7/16/2009). Center designation may be redesignated by the State Planning Commission and the Highlands Council. State Planning Areas are from the State Development and Redevelopment Plan.

